

May 2017 Great Basin Water Supply Briefing

May 5, 2017

Paul Miller – Service Coordination
Hydrologist

Colorado Basin River Forecast Center
National Weather Service
NOAA

Please mute your phone
until ready to ask questions



Today's Presentation

April weather impacts:

- Generally cooler than normal
- Snowmelt generally slowed

Snowpack conditions:

- Low elevation snowpack is gone, mid-elevation snowpack is mostly gone except in some northern areas
- Snow remains at higher elevations

May 2017 water supply forecasts overview

- Forecasts remain well above average in most areas

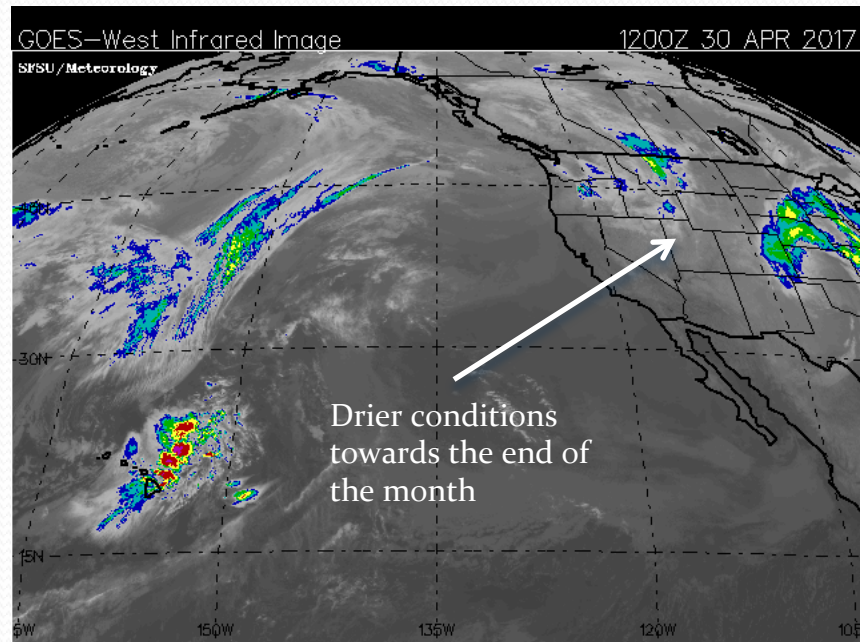
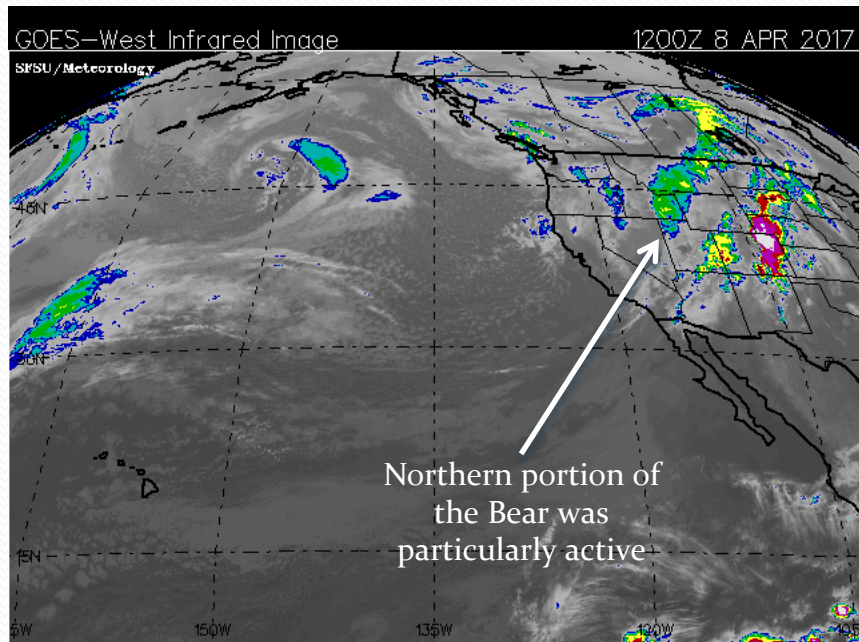
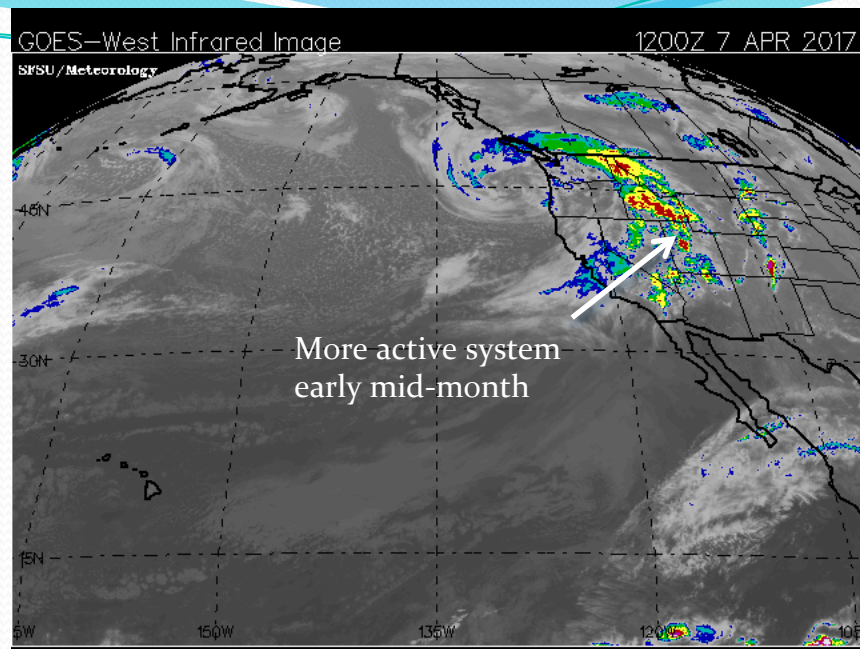
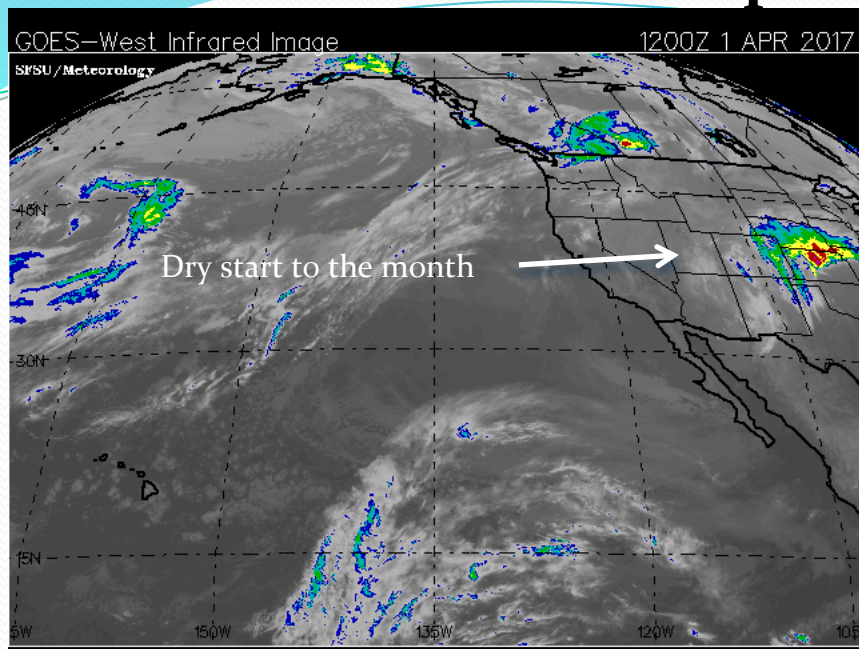
Potential flooding due to rising temperatures in the near future

Upcoming weather – A difficult forecast!

Contacts & Questions

*** Please mute your phone until ready to ask questions ***

April Weather



April Weather

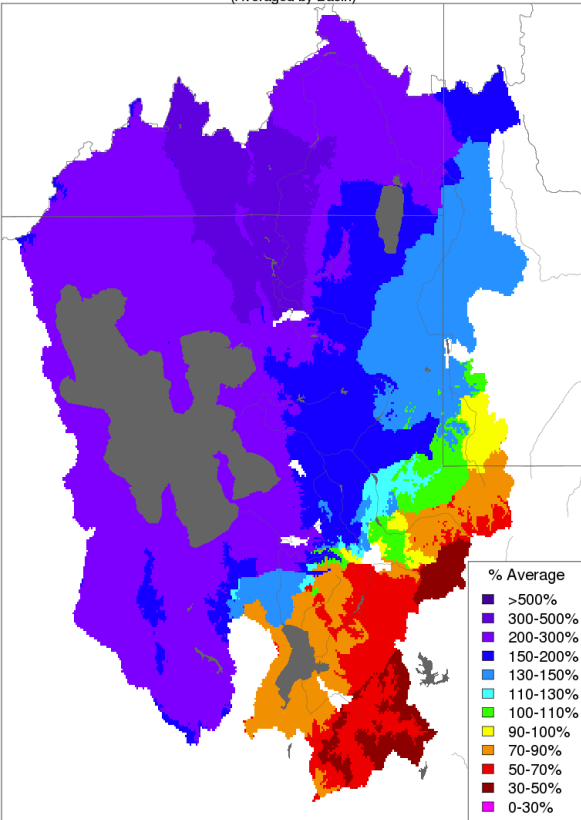
Precipitation distribution over the month of April

Wet and cool conditions were apparent over much of the Great Basin during the middle of April.

With the exception of the northern portion of the Bear River Basin, conditions became drier but temperatures remained below average.

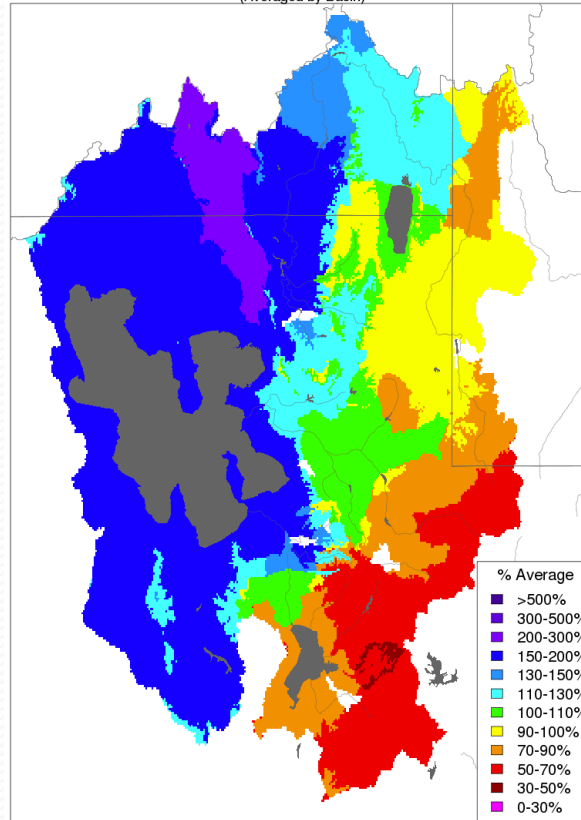
Overall, near normal to above average precipitation conditions for the month of April, though drier in the South near the Provo River Basin

Month to Date Precipitation - April 09 2017
(Averaged by Basin)



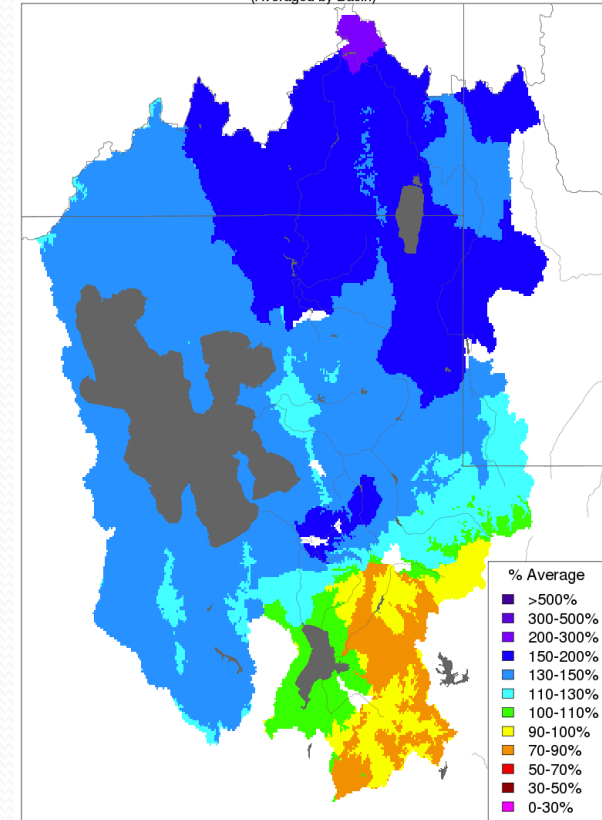
Prepared by NOAA, Colorado Basin River Forecast Center
Salt Lake City, Utah, www.cbrfc.noaa.gov

Month to Date Precipitation - April 23 2017
(Averaged by Basin)



Prepared by NOAA, Colorado Basin River Forecast Center
Salt Lake City, Utah, www.cbrfc.noaa.gov

Monthly Precipitation - April 2017
(Averaged by Basin)

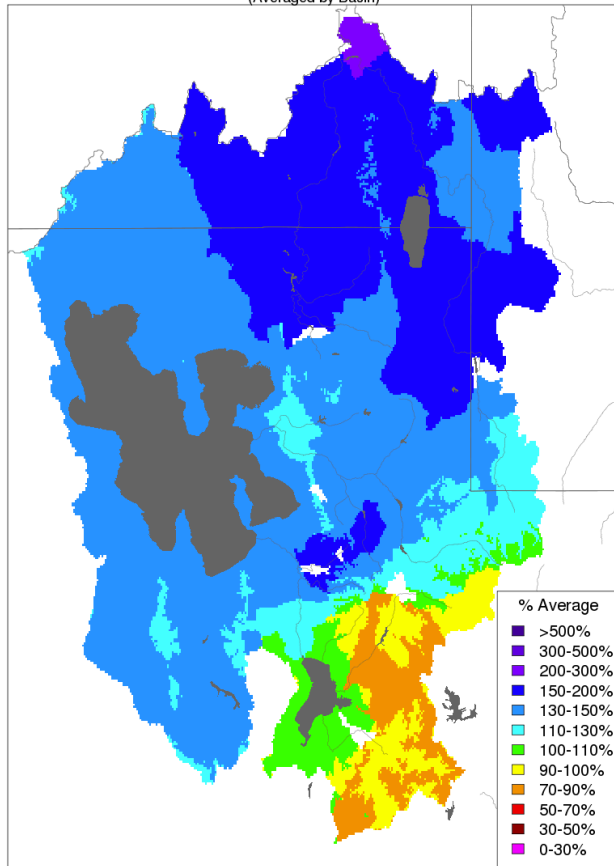


Prepared by NOAA, Colorado Basin River Forecast Center
Salt Lake City, Utah, www.cbrfc.noaa.gov

April Weather

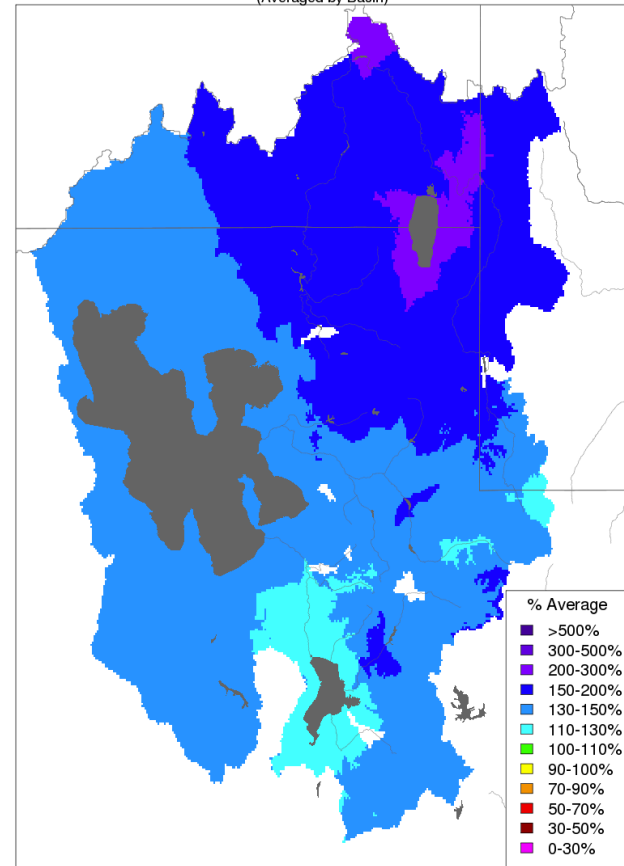
Precipitation

Monthly Precipitation - April 2017
(Averaged by Basin)



Prepared by NOAA, Colorado Basin River Forecast Center
Salt Lake City, Utah, www.cbrfc.noaa.gov

Water Year Precipitation, October 2016 - April 2017
(Averaged by Basin)



Prepared by NOAA, Colorado Basin River Forecast Center
Salt Lake City, Utah, www.cbrfc.noaa.gov

April Precipitation (% average):

Bear:	150%
Weber:	130%
Six Creeks:	135%
Provo/UT Lake:	90%

Seasonal Precipitation (% average):

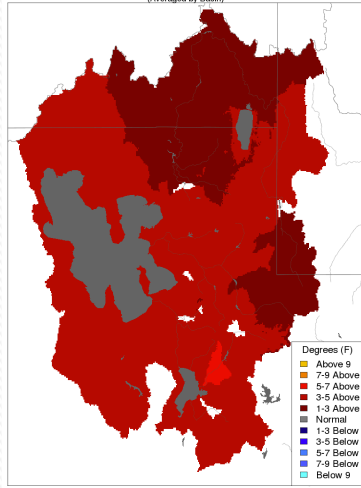
Bear:	170%
Weber:	145%
Six Creeks:	130%
Provo/UT Lake:	140%

April Weather

A break from the heat!

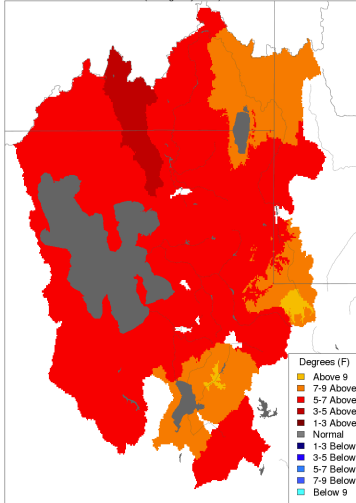
Most daily temperatures about 1 – 3 degrees below average

Max Temp - Monthly Deviation - February 2017
(Averaged by Basin)



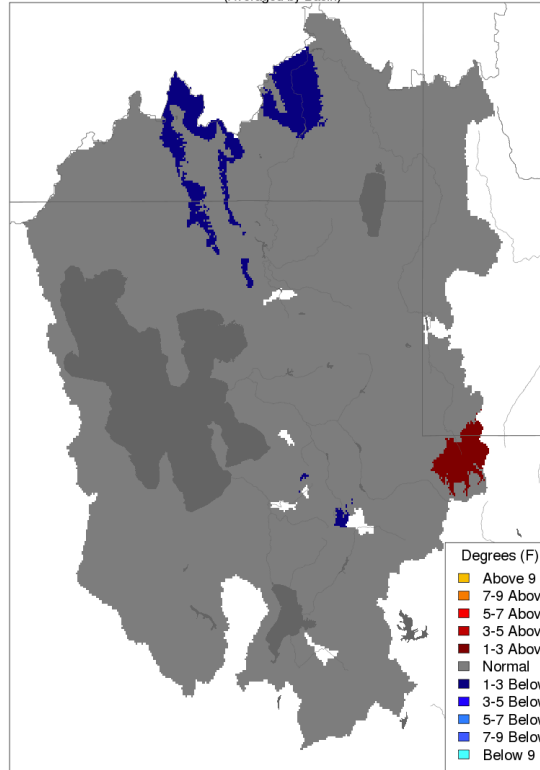
Prepared by NOAA, Colorado Basin River Forecast Center
Salt Lake City, Utah, www.cbrfc.noaa.gov

Min Temp - Monthly Deviation - February 2017
(Averaged by Basin)



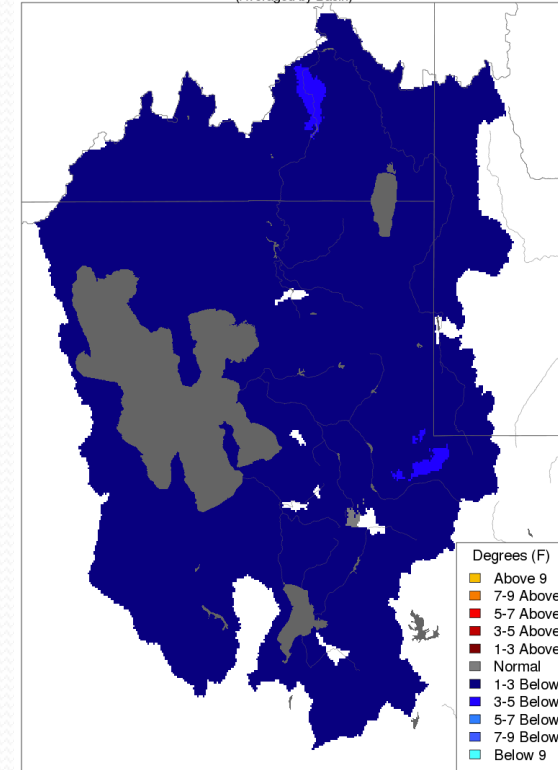
Prepared by NOAA, Colorado Basin River Forecast Center
Salt Lake City, Utah, www.cbrfc.noaa.gov

Min Temp - Monthly Deviation - April 2017
(Averaged by Basin)



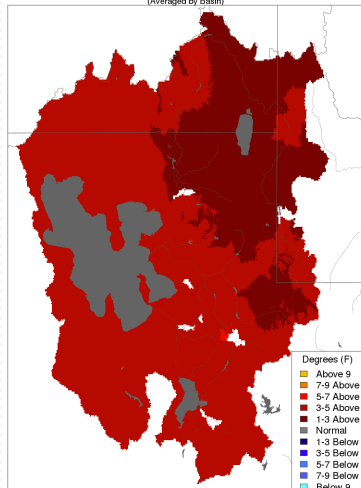
Prepared by NOAA, Colorado Basin River Forecast Center
Salt Lake City, Utah, www.cbrfc.noaa.gov

Max Temp - Monthly Deviation - April 2017
(Averaged by Basin)



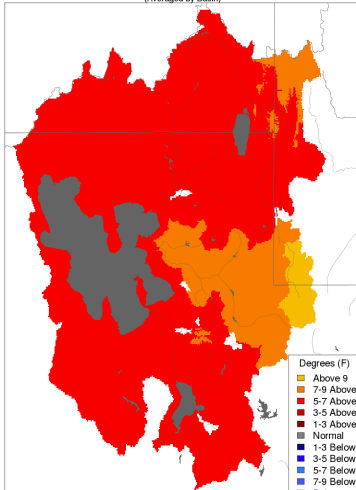
Prepared by NOAA, Colorado Basin River Forecast Center
Salt Lake City, Utah, www.cbrfc.noaa.gov

Max Temp - Monthly Deviation - March 2017
(Averaged by Basin)



Prepared by NOAA, Colorado Basin River Forecast Center
Salt Lake City, Utah, www.cbrfc.noaa.gov

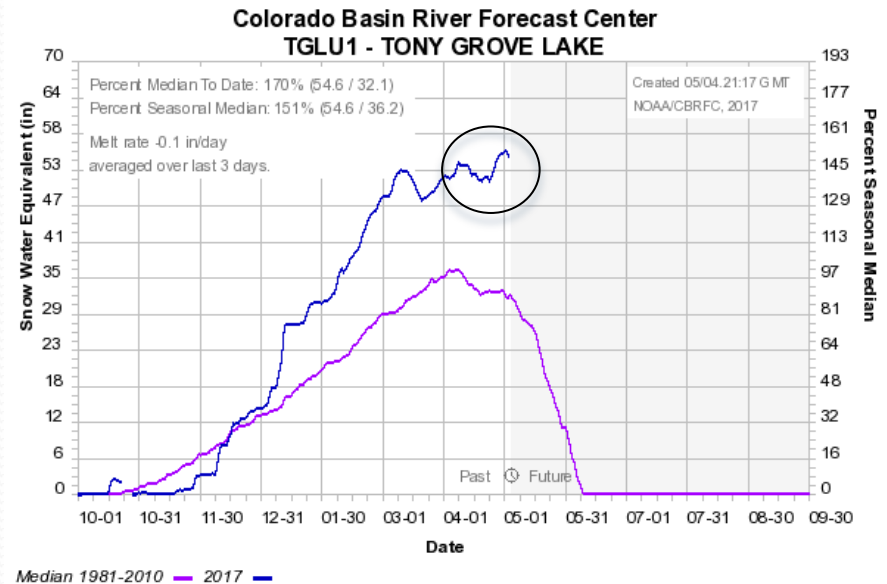
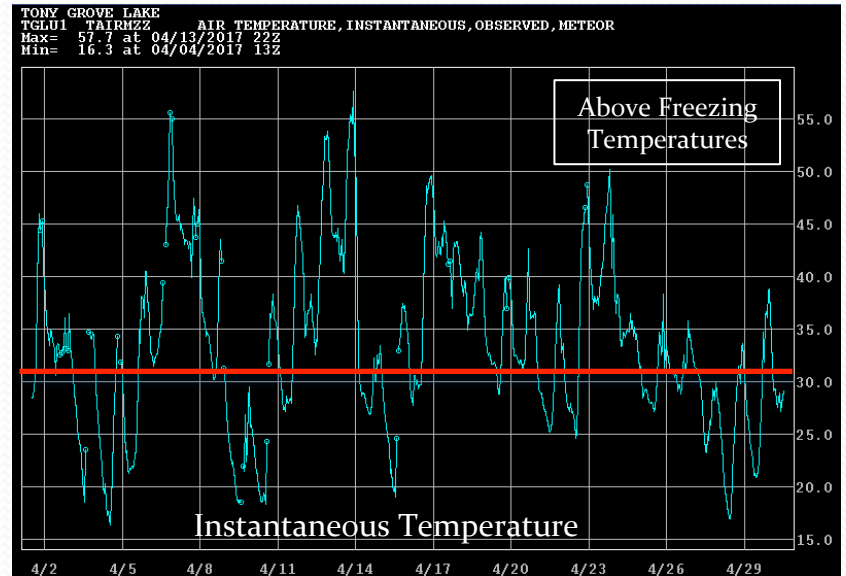
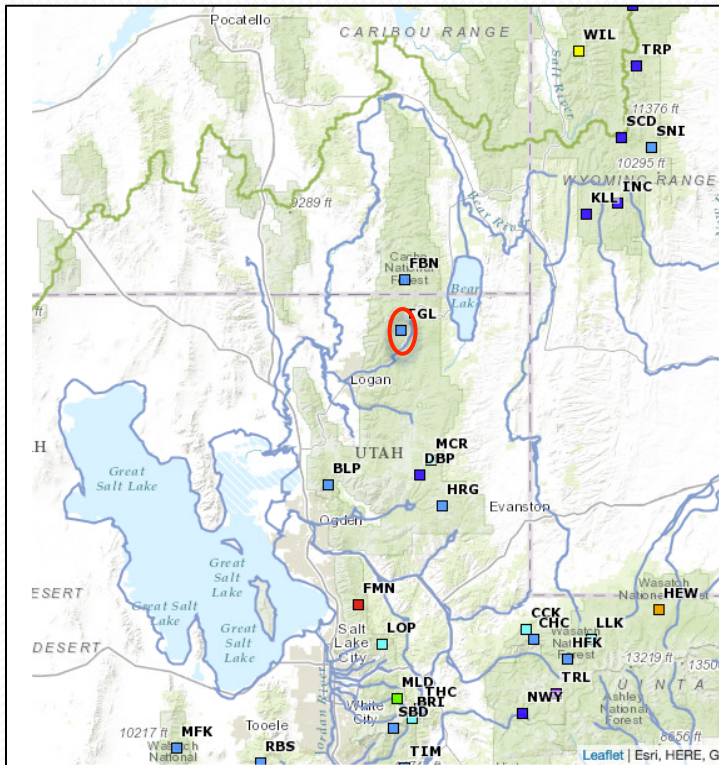
Min Temp - Monthly Deviation - March 2017
(Averaged by Basin)



Prepared by NOAA, Colorado Basin River Forecast Center
Salt Lake City, Utah, www.cbrfc.noaa.gov

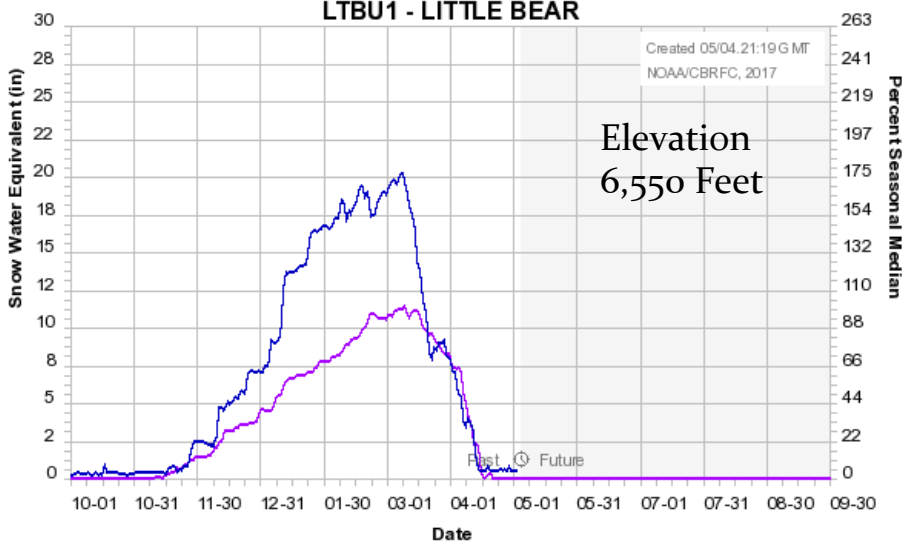
March Weather Temperature

Tony Grove Lake SNOTEL
Elevation: 8,400 Feet
Logan River Basin

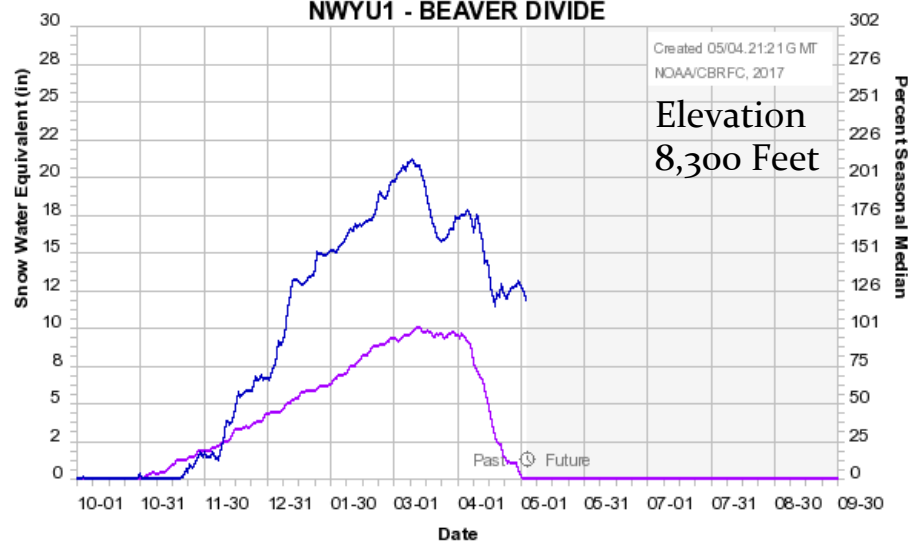


April Weather: Cooler Temperatures Slow Melt

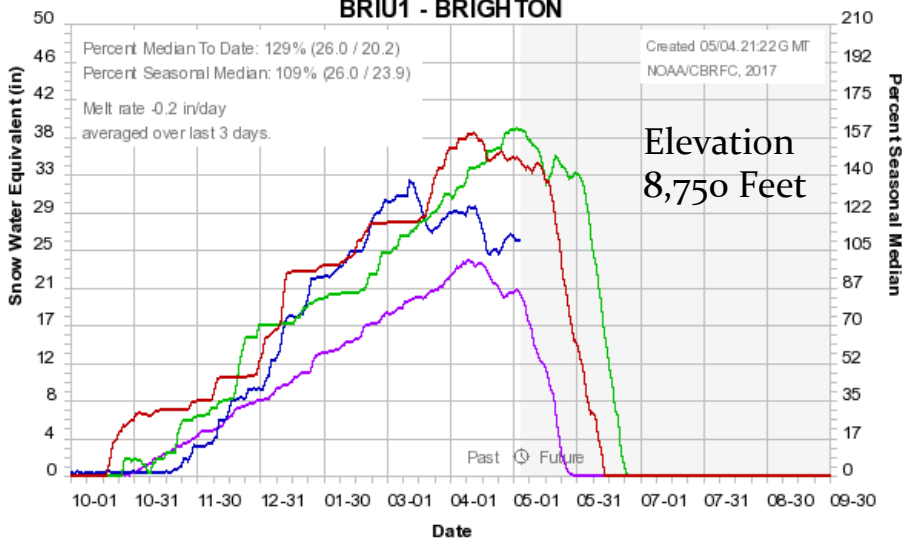
Colorado Basin River Forecast Center
LTBU1 - LITTLE BEAR



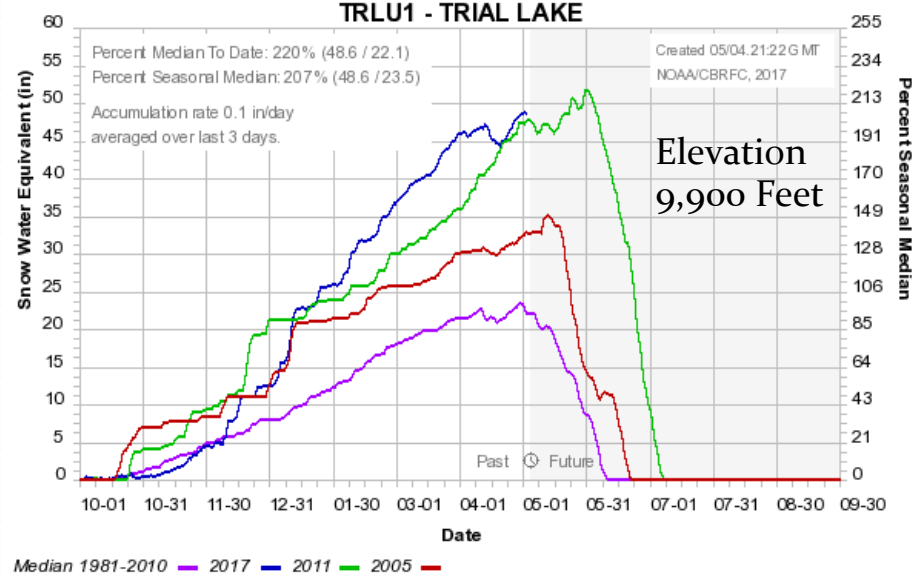
Colorado Basin River Forecast Center
NWYU1 - BEAVER DIVIDE



Colorado Basin River Forecast Center
BRIU1 - BRIGHTON



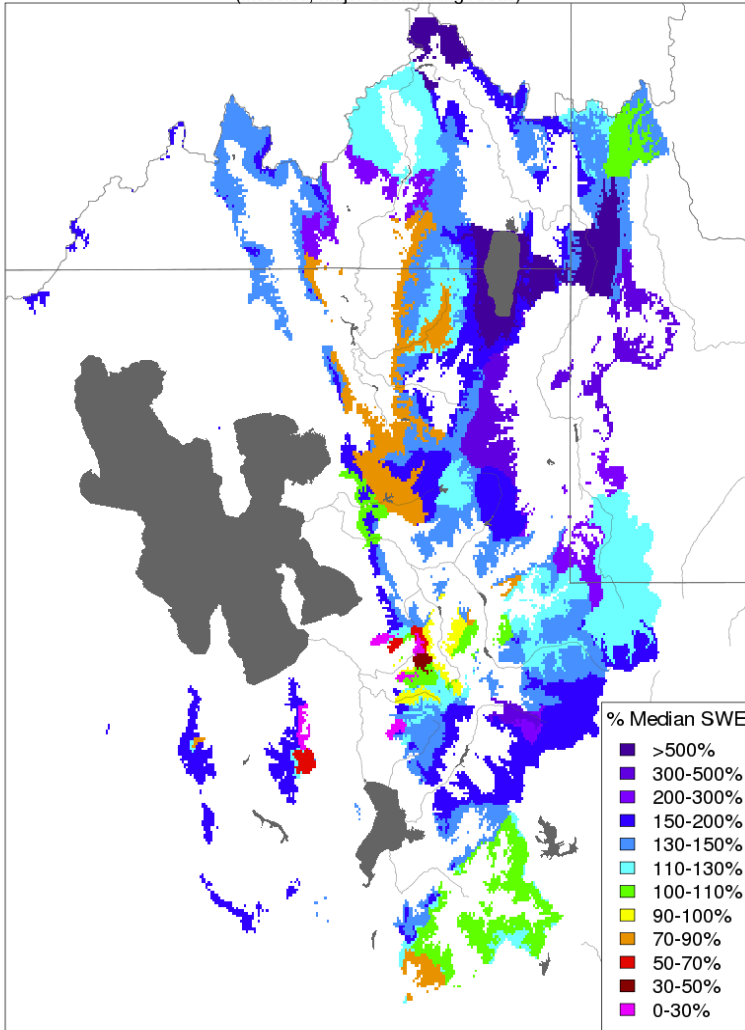
Colorado Basin River Forecast Center
TRLU1 - TRIAL LAKE



April Weather: Most low elevation snow has melted

CBRFC Model

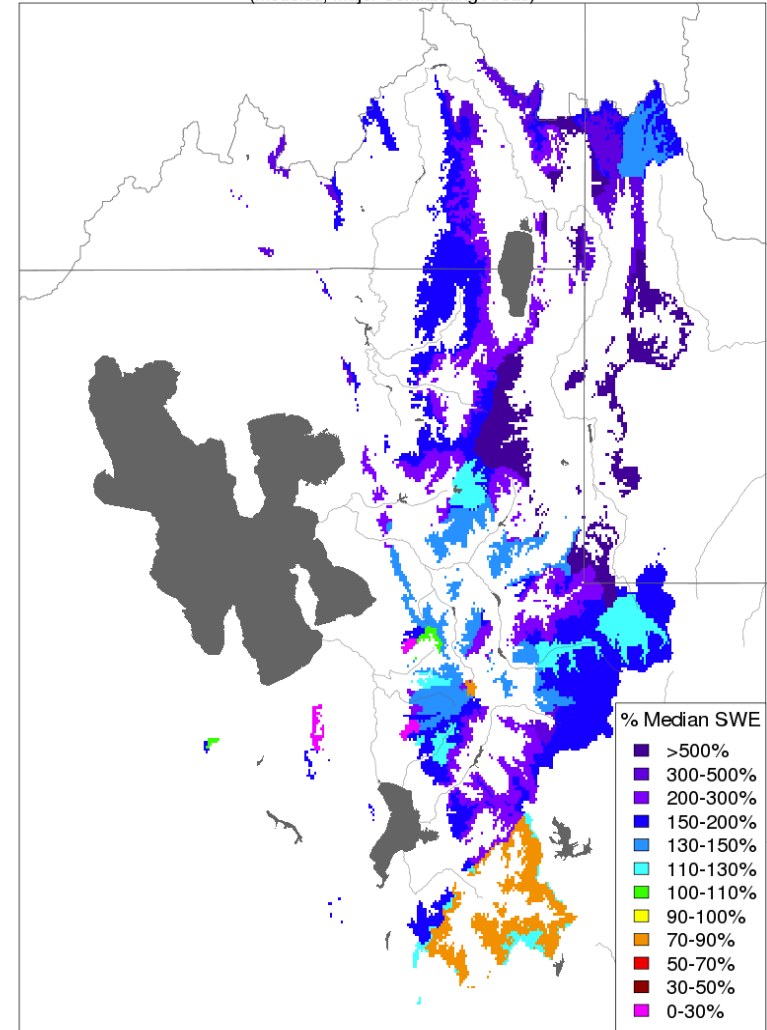
Snow Conditions - April 05 2017
(Modeled, Major Contributing Areas)



Prepared by NOAA, Colorado Basin River Forecast Center
Salt Lake City, Utah, www.cbrfc.noaa.gov

CBRFC Model

Snow Conditions - May 01 2017
(Modeled, Major Contributing Areas)



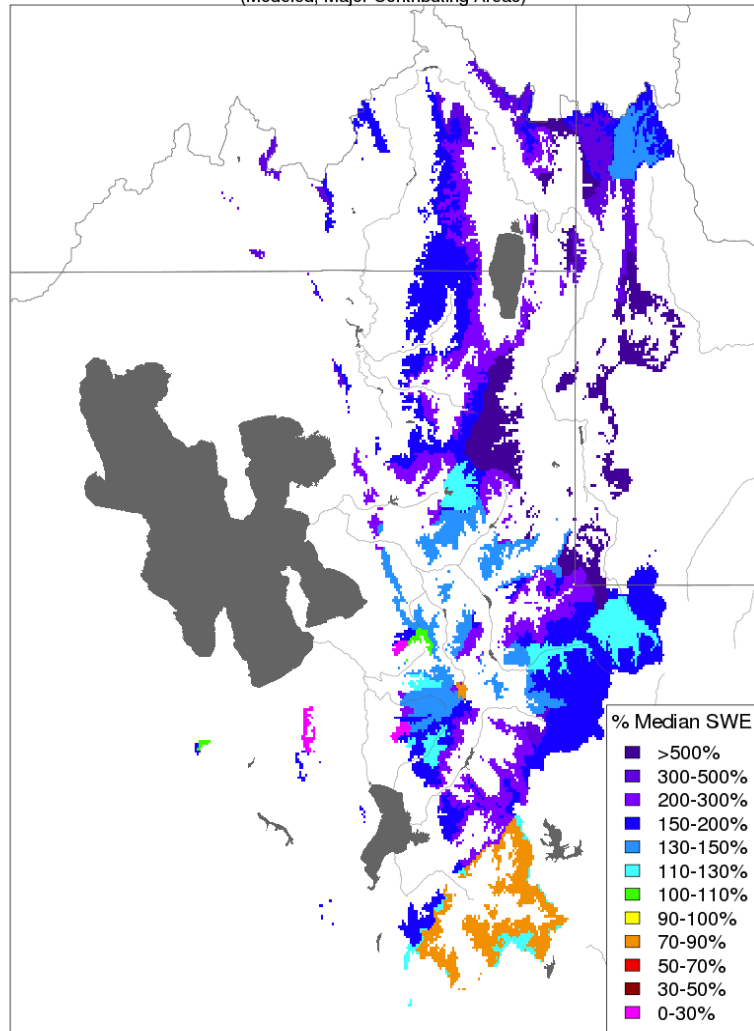
Prepared by NOAA, Colorado Basin River Forecast Center
Salt Lake City, Utah, www.cbrfc.noaa.gov

April Weather Impacts

Current snow conditions (CBRFC model)

Snow Conditions - May 01 2017

(Modeled, Major Contributing Areas)



Prepared by NOAA, Colorado Basin River Forecast Center
Salt Lake City, Utah, www.cbafc.noaa.gov

Lower elevation snow has melted out in most areas, but cooler temperatures in April reduced the rate of snowmelt in the Great Basin

Lower elevation areas are saturated (model) and temperatures are expected to rise

Could result in efficient runoff and possible flooding events in:

Bear River Basin

Weber/Ogden River Basin

Logan River Basin

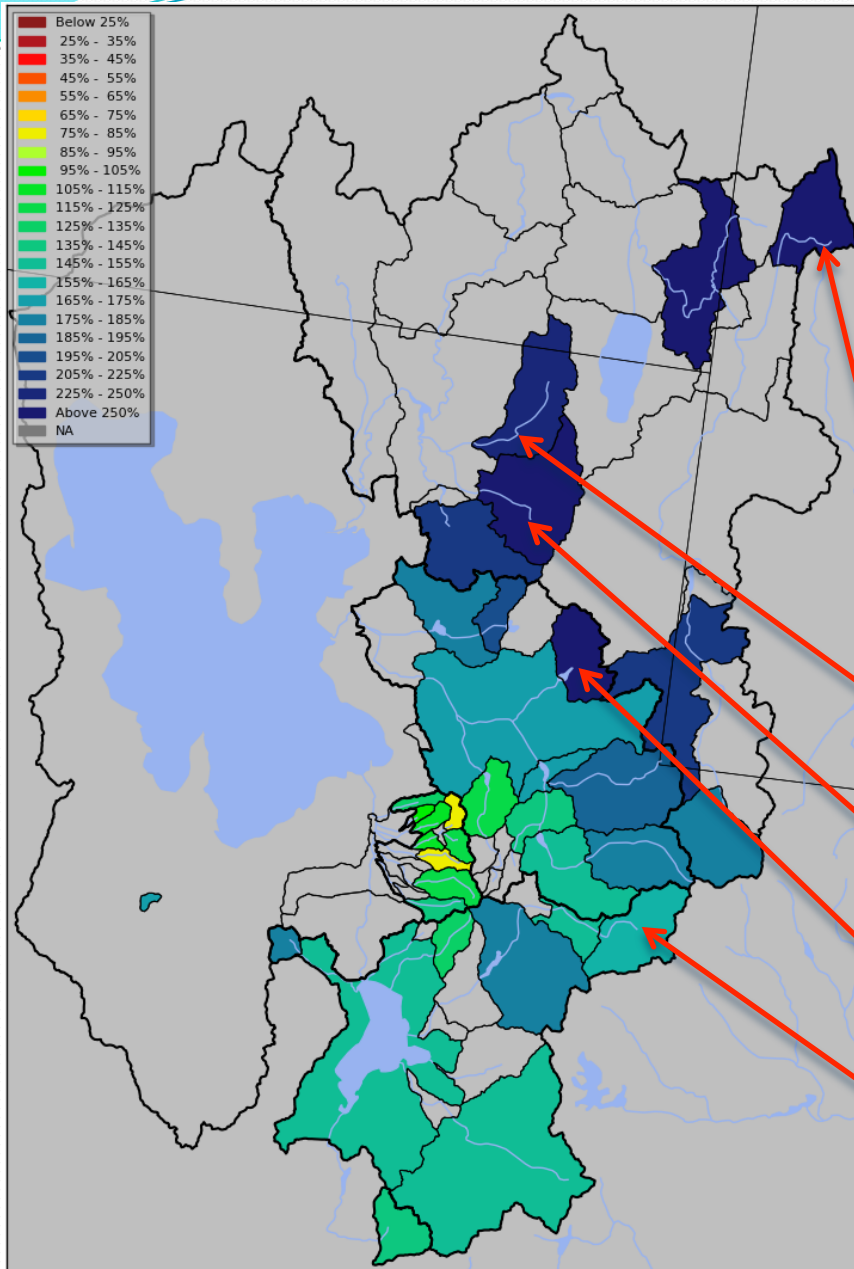
April-July forecast volumes

Generally much above average conditions

In the north, forecasts did not tend to change much

Further south, forecasts trended slightly downward

April Streamflow Observations



April observed were above average, with some sites reporting record or near-record flows

Smith's Fork near Border 1/75 26.8 KAF

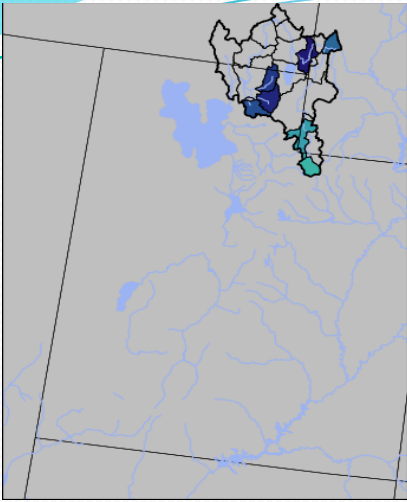
Logan near Logan 2/53 34.4 KAF

Blacksmith Fork near Hyrum 3/100 30.7 KAF

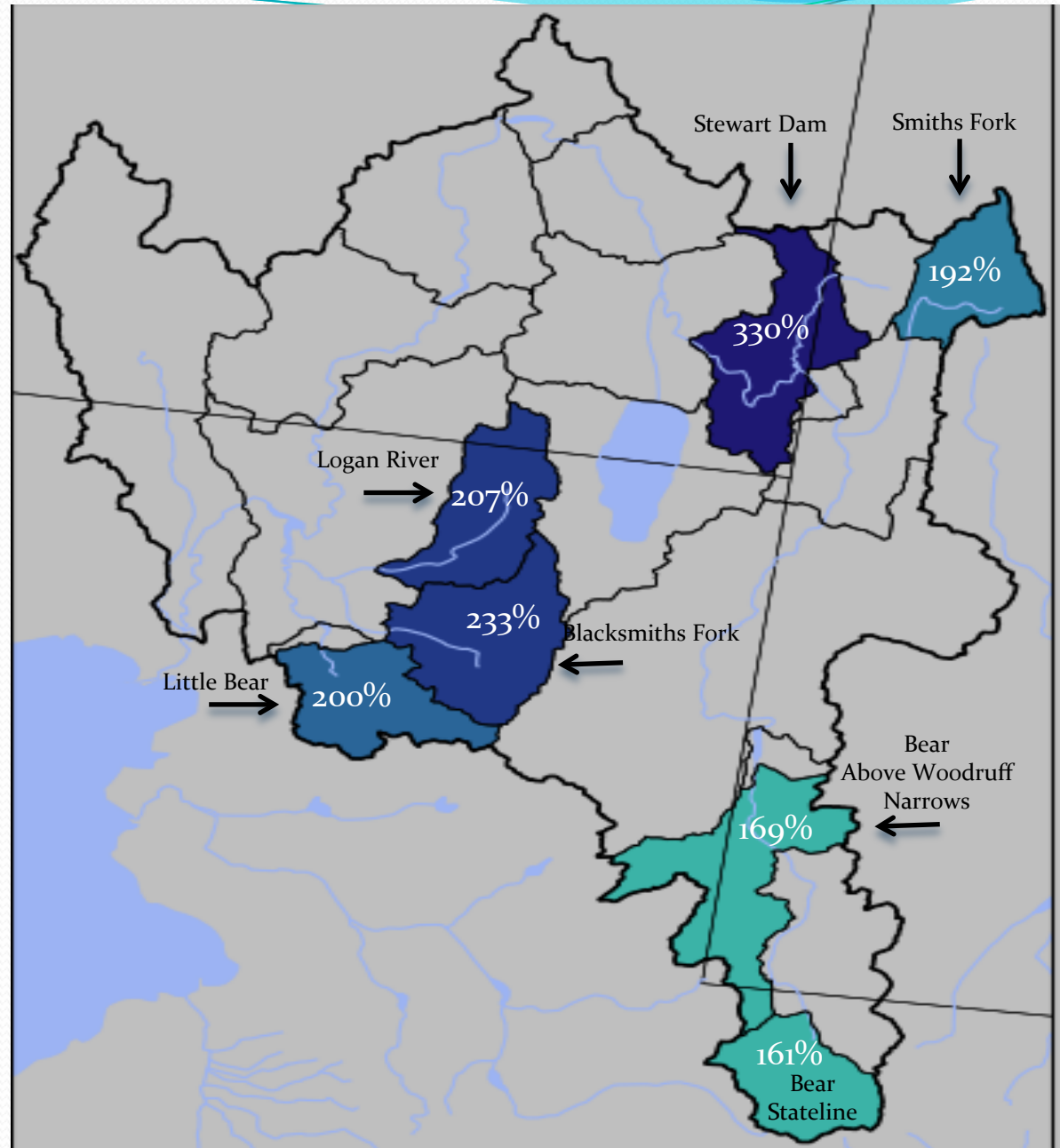
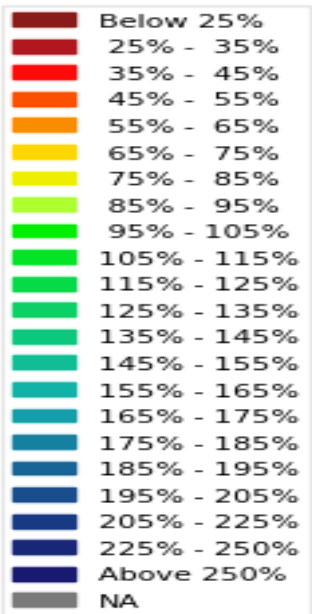
Lost Creek at Croyden 2/37 11.9 KAF

Provo near Woodland 3/53, 19 KAF

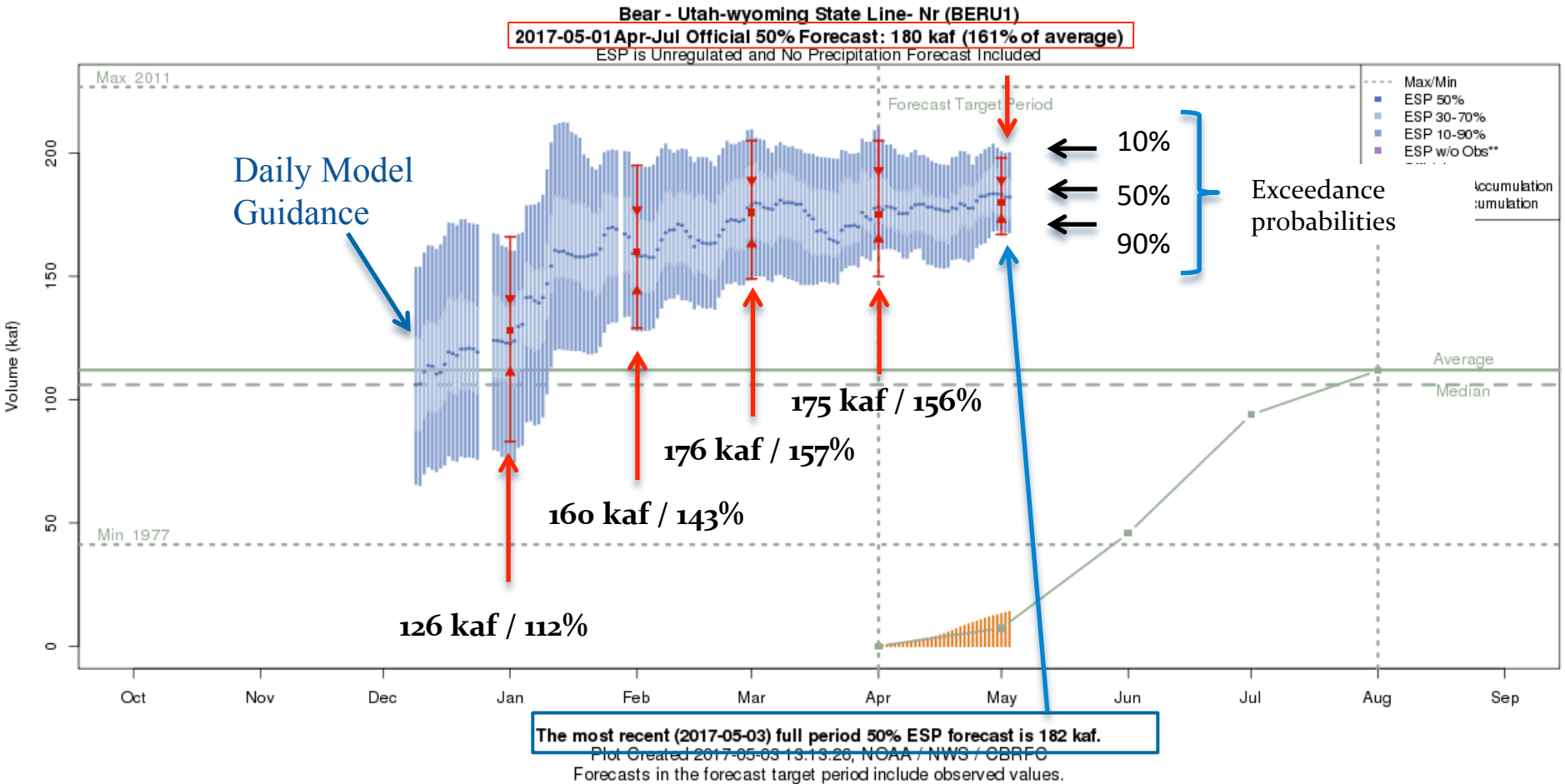
May 1st Water Supply Forecasts – Bear River Basin



April-July
Forecast
Streamflow Volumes
(% of 1981-2010 average)



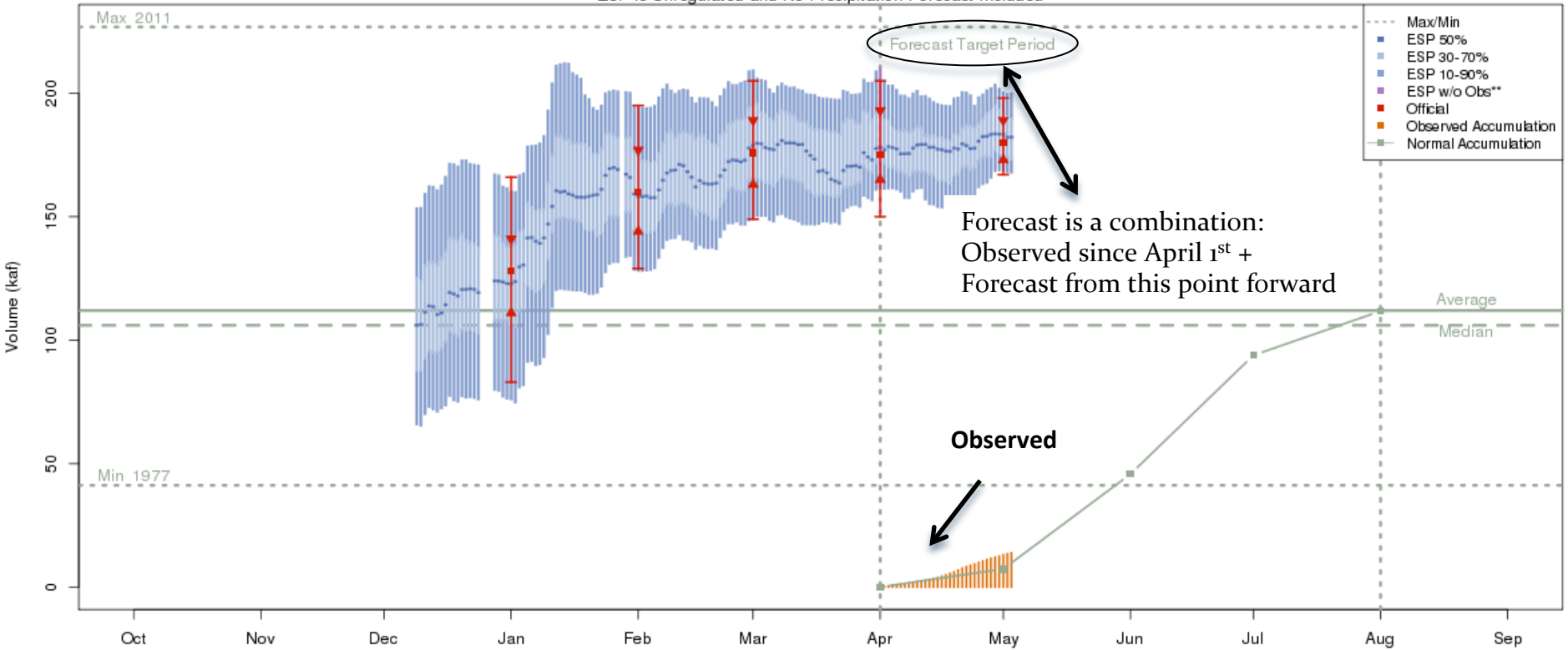
Forecast Evolution Plot – Bear River @ Utah/Wyoming Stateline



Plots are available at: <https://www.cbrfc.noaa.gov>
 Select WATER SUPPLY from the top menu
 Click on desired location for pop-up, click again for full screen

Forecast Evolution Plot – Bear River @ Utah/Wyoming Stateline

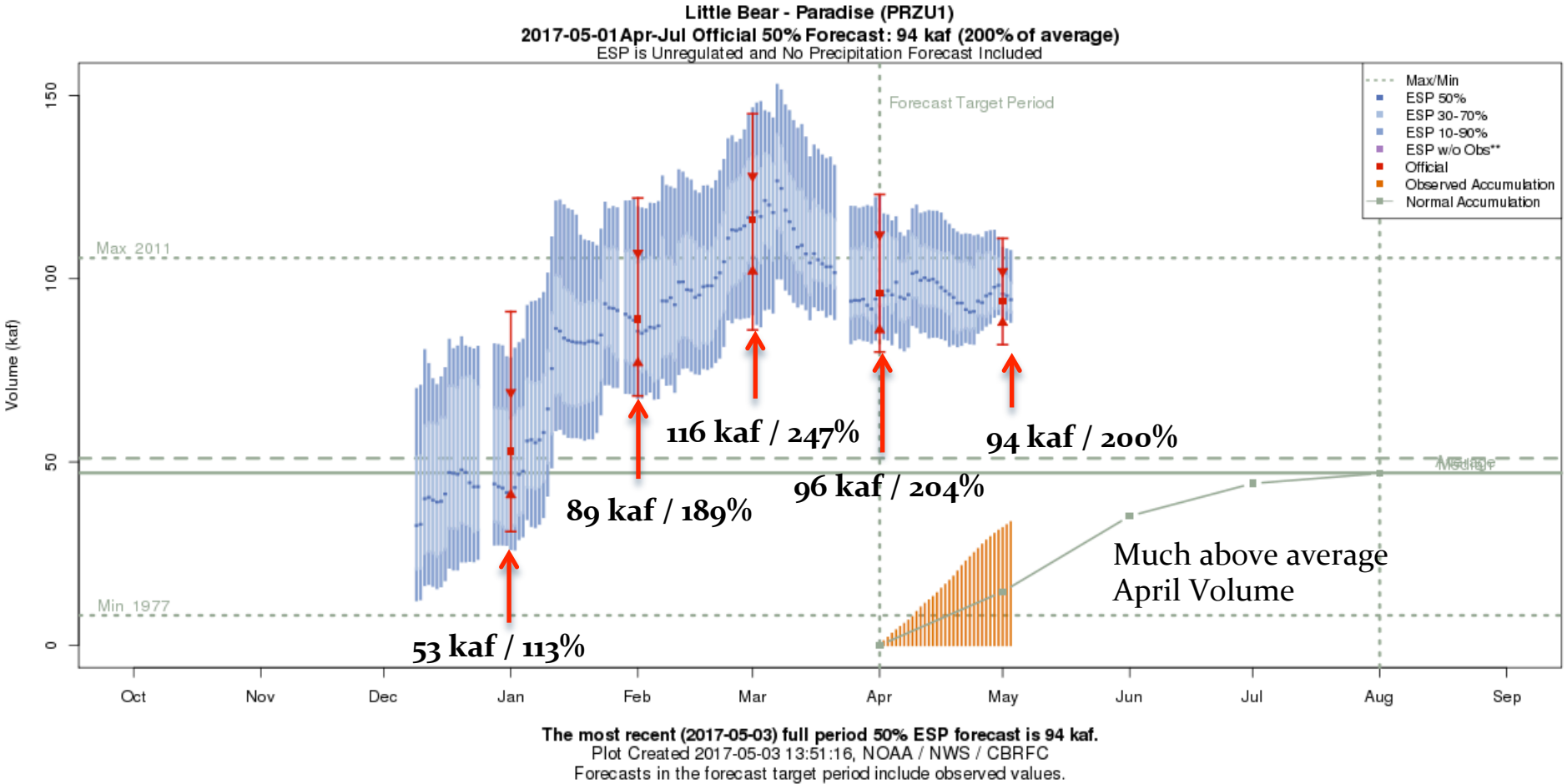
Bear - Utah-wyoming State Line- Nr (BERU1)
2017-05-01 Apr-Jul Official 50% Forecast: 180 kaf (161% of average)
ESP is Unregulated and No Precipitation Forecast Included



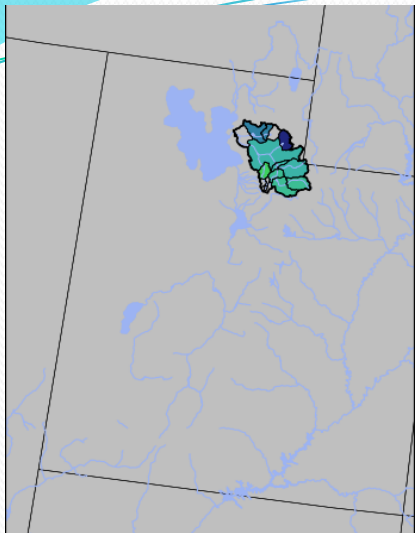
The most recent (2017-05-03) full period 50% ESP forecast is 182 kaf.

Plot Created 2017-05-03 13:13:26, NOAA / NWS / CBRFC
Forecasts in the forecast target period include observed values.

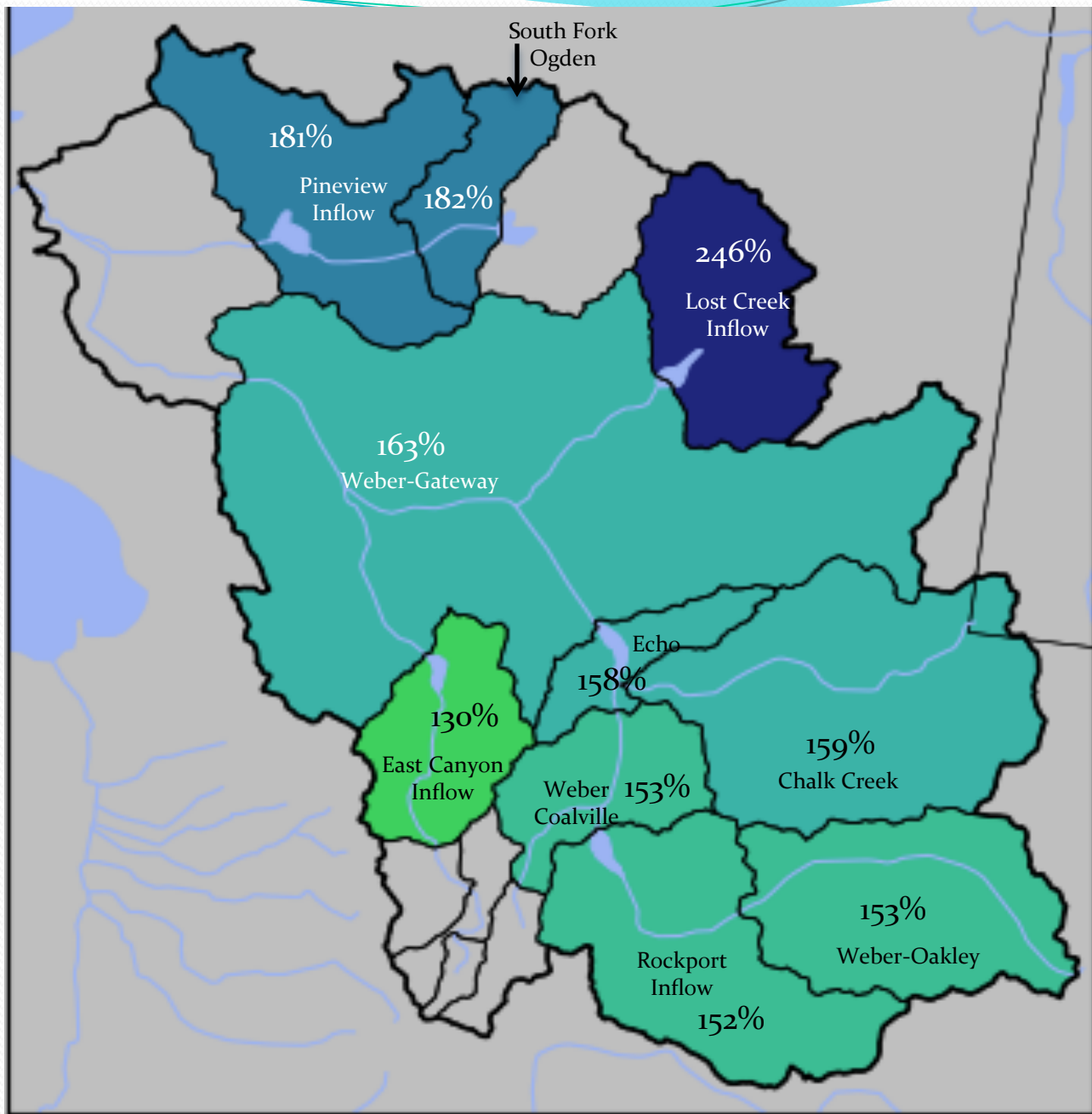
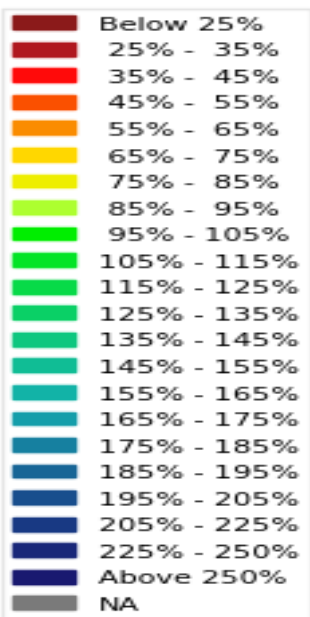
Forecast Evolution Plot – Little Bear at Paradise



May 1st Water Supply Forecasts – Weber River Basin

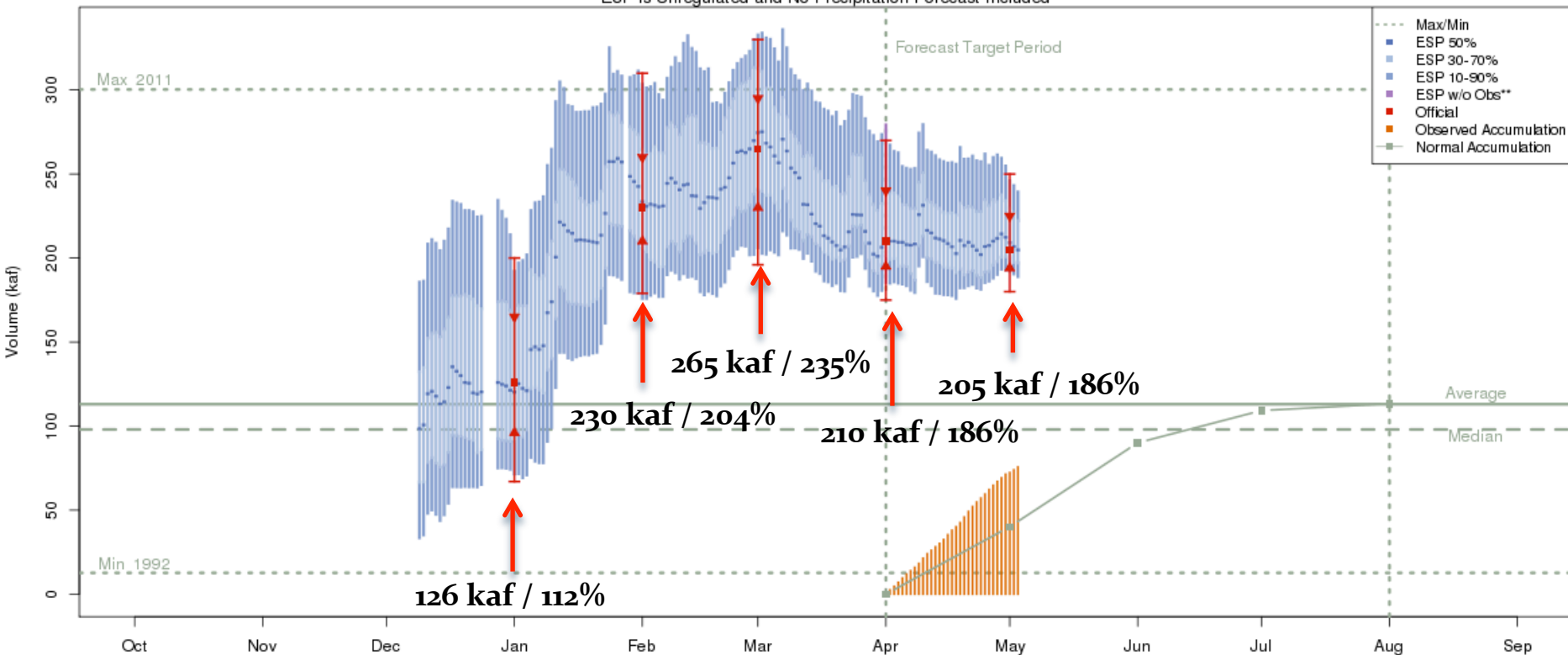


April-July Forecast
Streamflow Volumes
(% of 1981-2010 average)



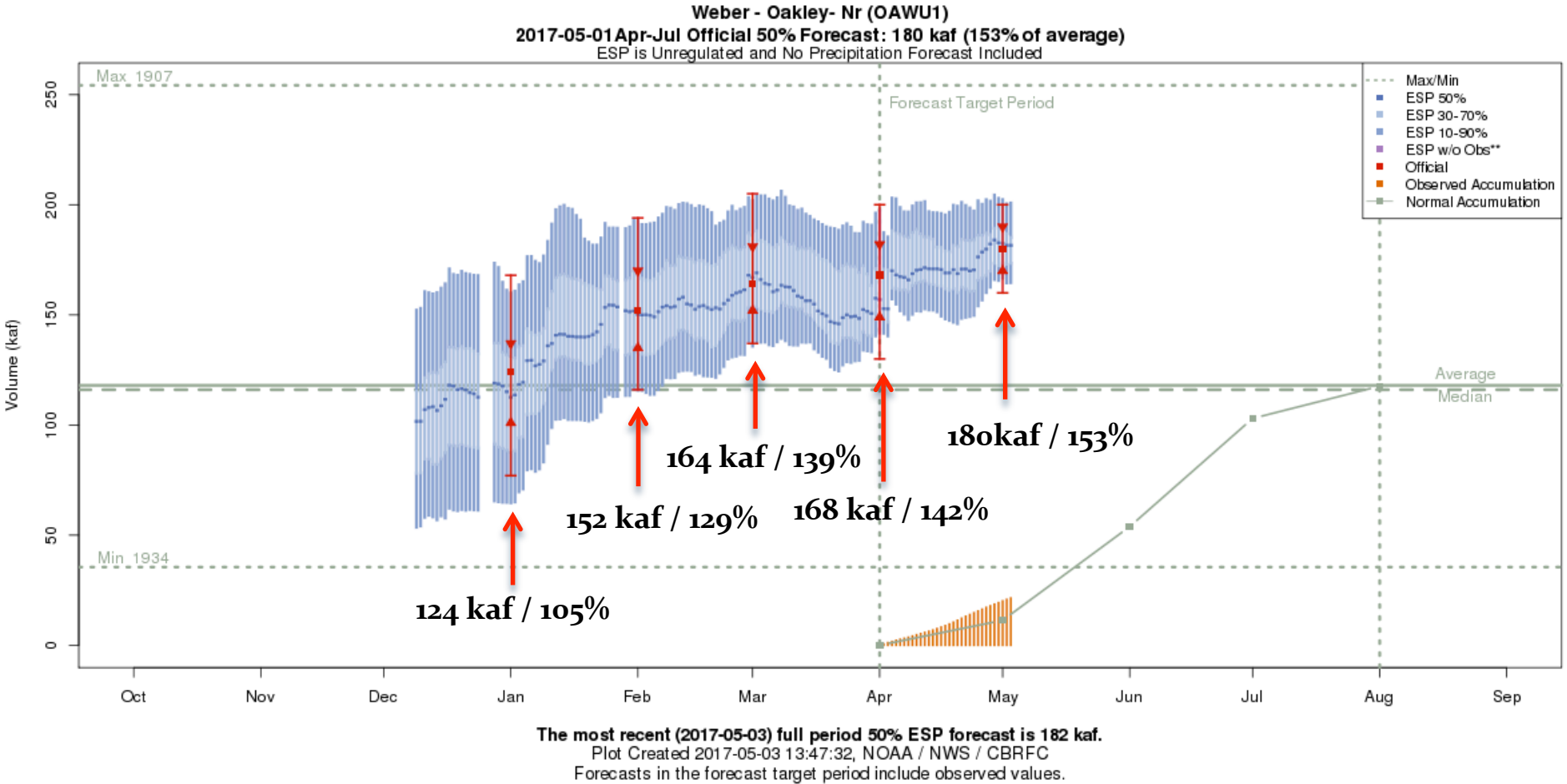
Forecast Evolution Plot – Ogden near Pineview Reservoir

Ogden - Pineview Res- Ogden- Nr (PINU1)
 2017-05-01 Apr-Jul Official 50% Forecast: 205 kaf (181% of average)
 ESP is Unregulated and No Precipitation Forecast Included

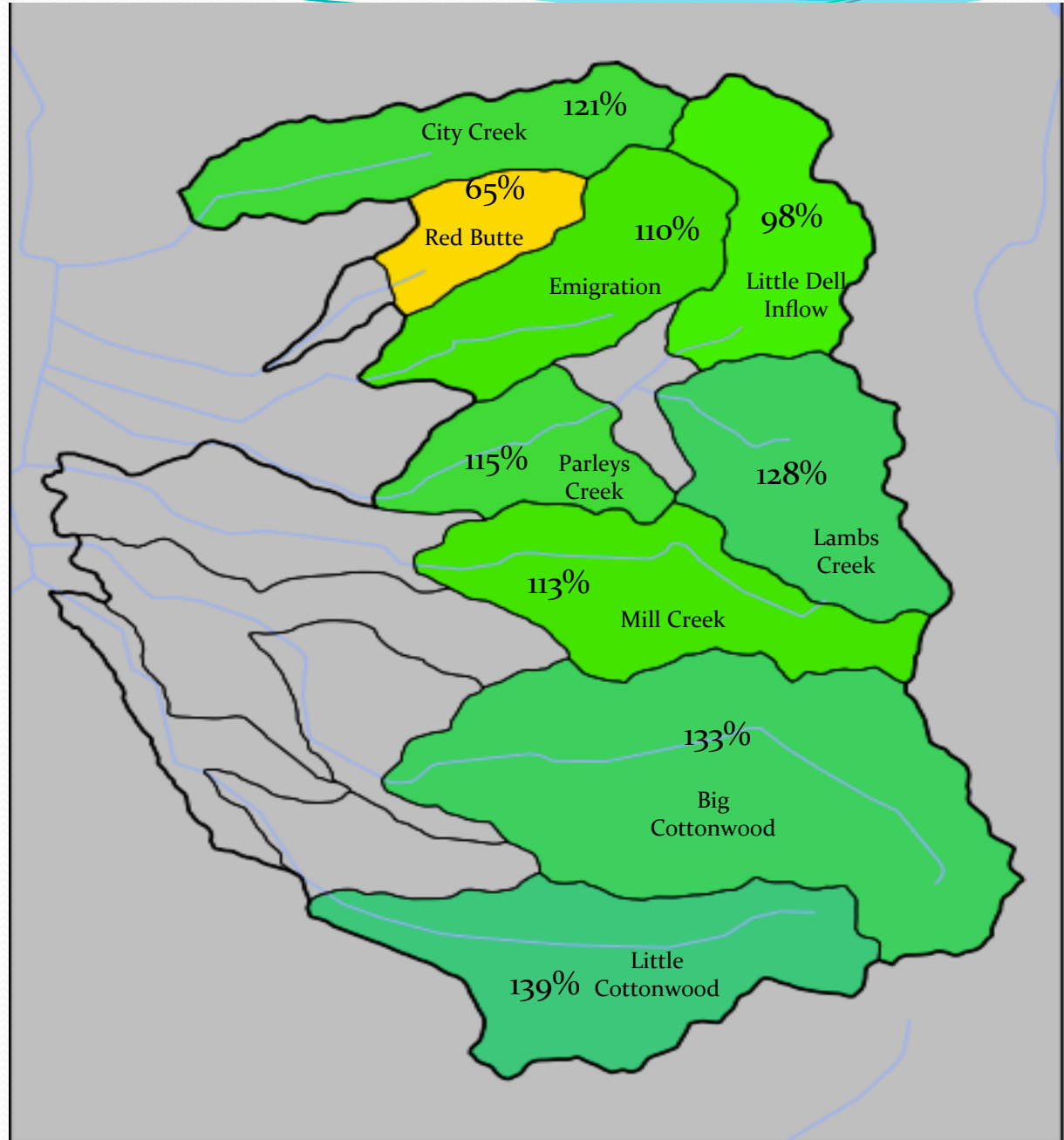
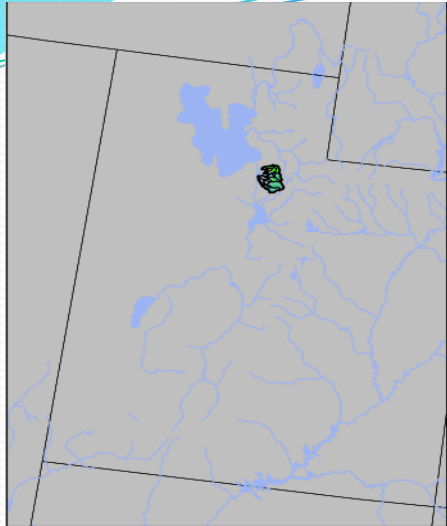


The most recent (2017-05-03) full period 50% ESP forecast is 205 kaf.
 Plot Created 2017-05-03 13:49:07, NOAA / NWS / CBRFC
 Forecasts in the forecast target period include observed values.

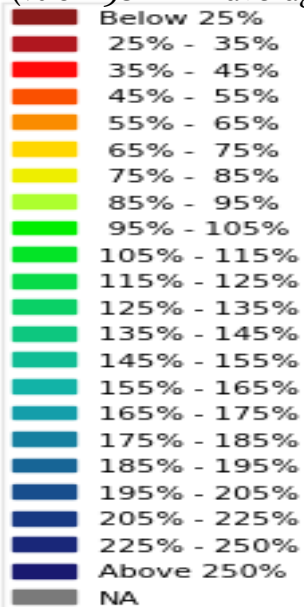
Forecast Evolution Plot – Weber River near Oakley



May 1st Water Supply Forecasts – Six Creeks

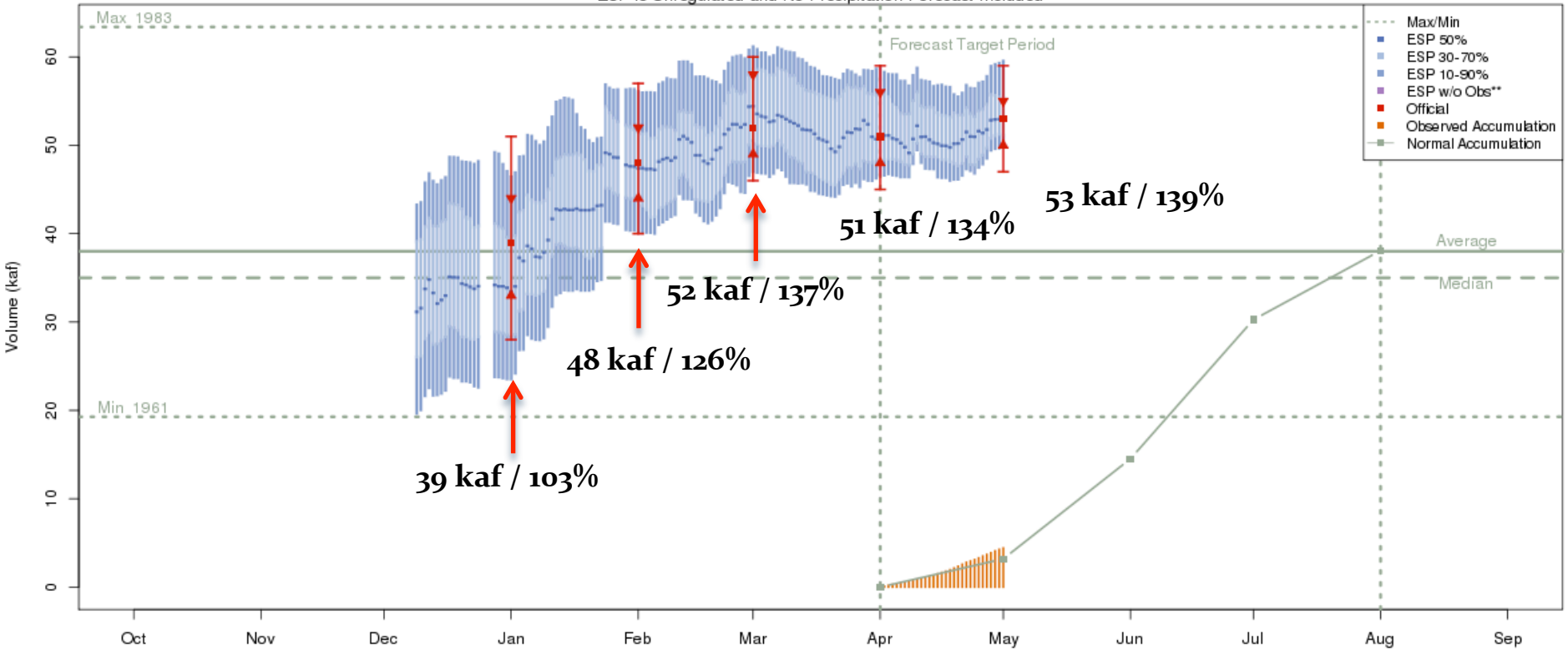


April-July
Forecast
Streamflow Volumes
(% of 1981-2010 average)



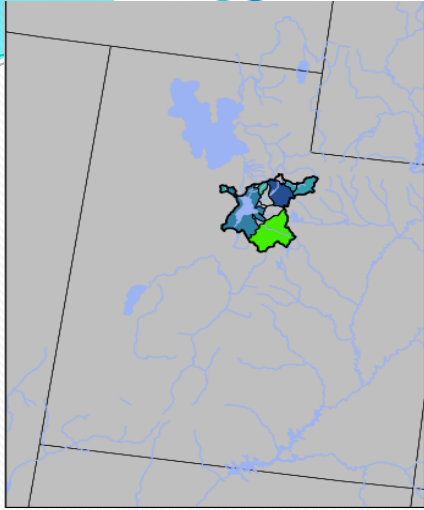
Forecast Evolution Plot – Little Cottonwood Creek

Little Cottonwood Ck - Salt Lake City- Nr (LCTU1)
 2017-05-01 Apr-Jul Official 50% Forecast: 53 kaf (139% of average)
 ESP is Unregulated and No Precipitation Forecast Included



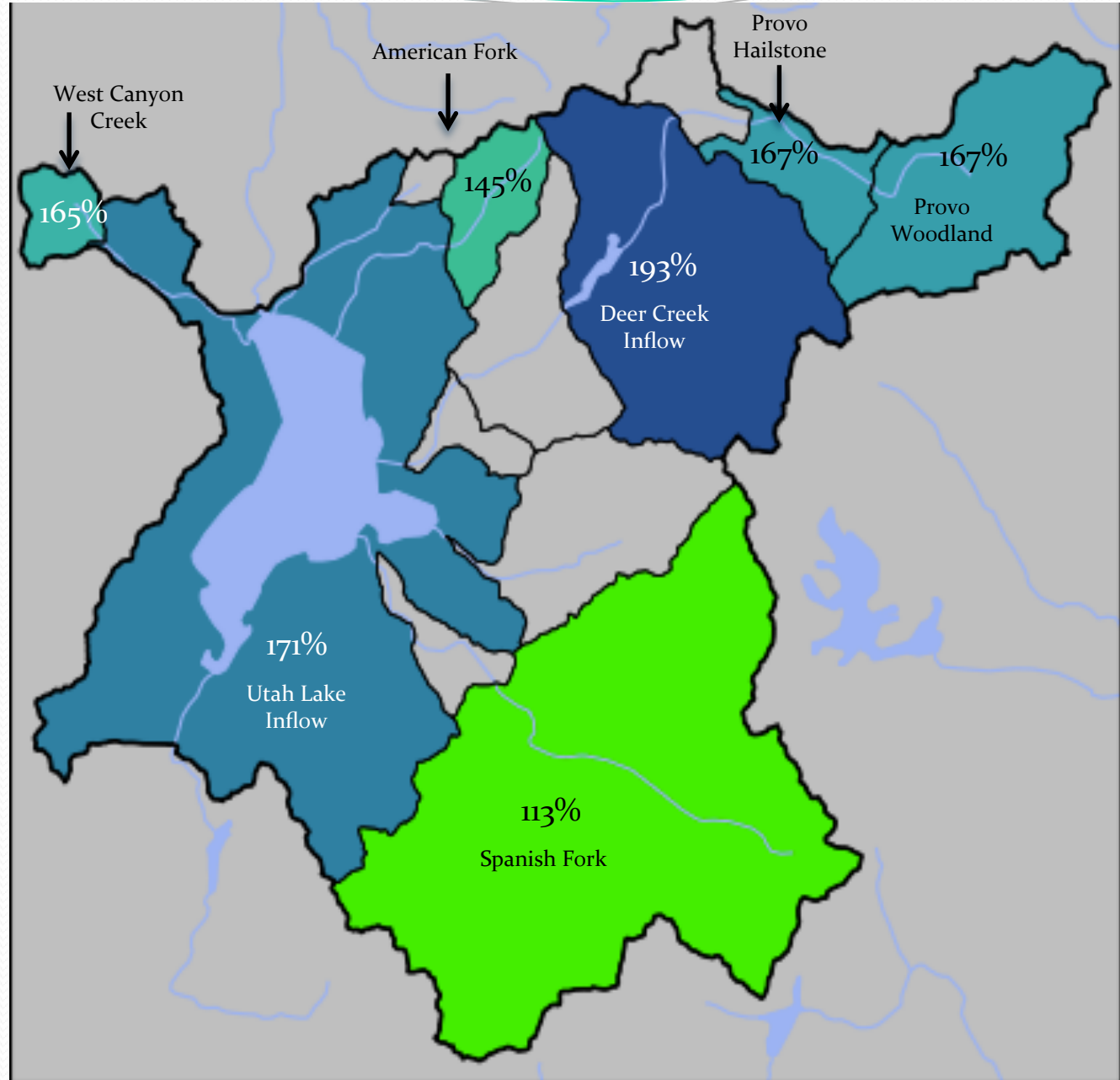
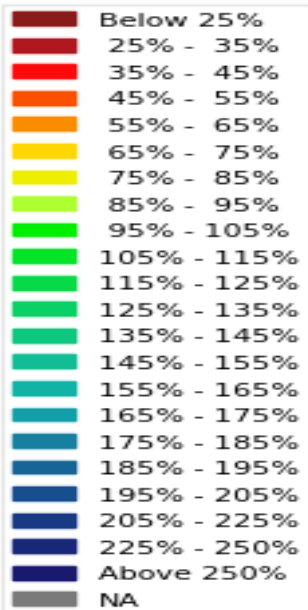
The most recent (2017-05-01) full period 50% ESP forecast is 53 kaf.
 Plot Created 2017-05-03 13:39:39, NOAA / NWS / CBRFC
 Forecasts in the forecast target period include observed values.

May 1st Water Supply Forecasts – Provo River / Utah Lake

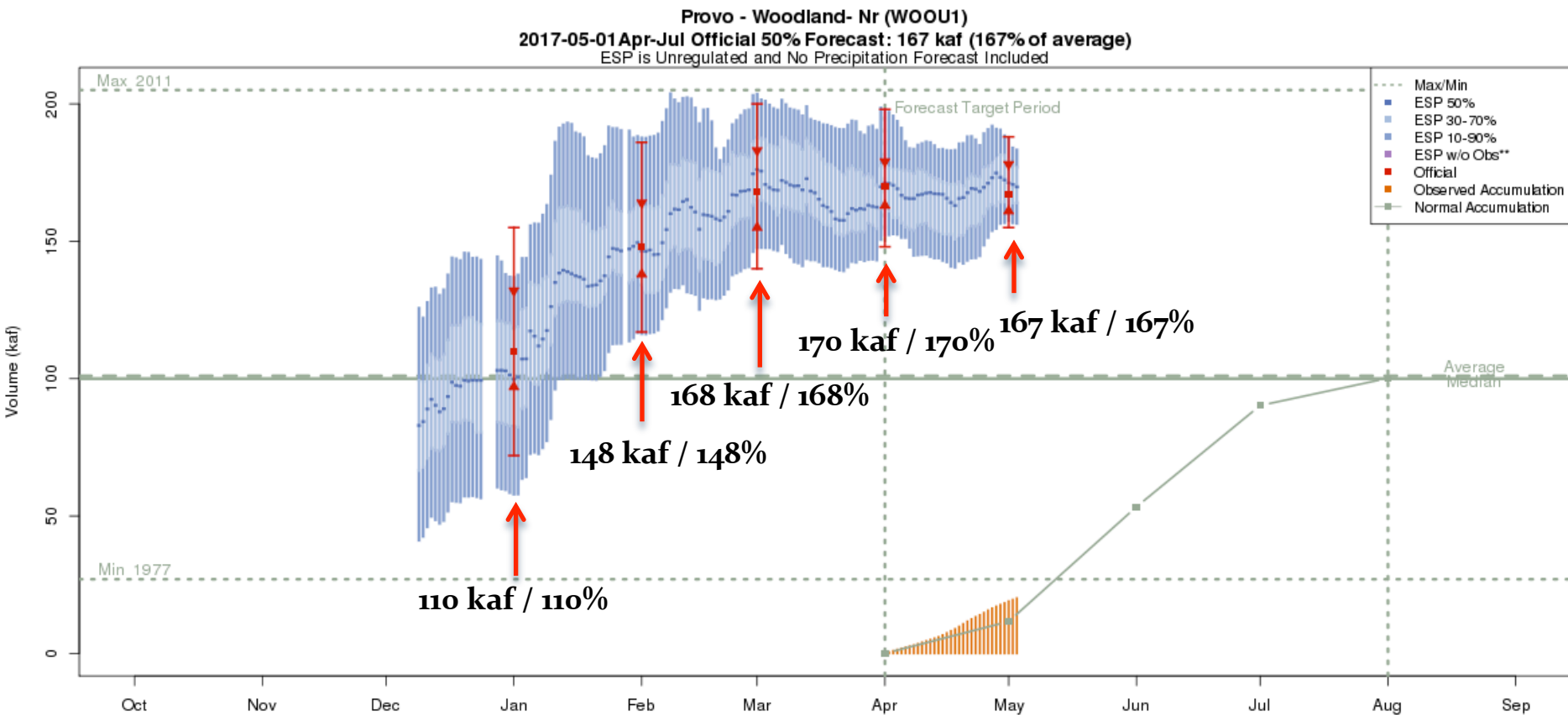


April-July
Forecast

Streamflow Volumes
(% of 1981-2010 average)



Forecast Evolution Plot – Provo River near Woodland

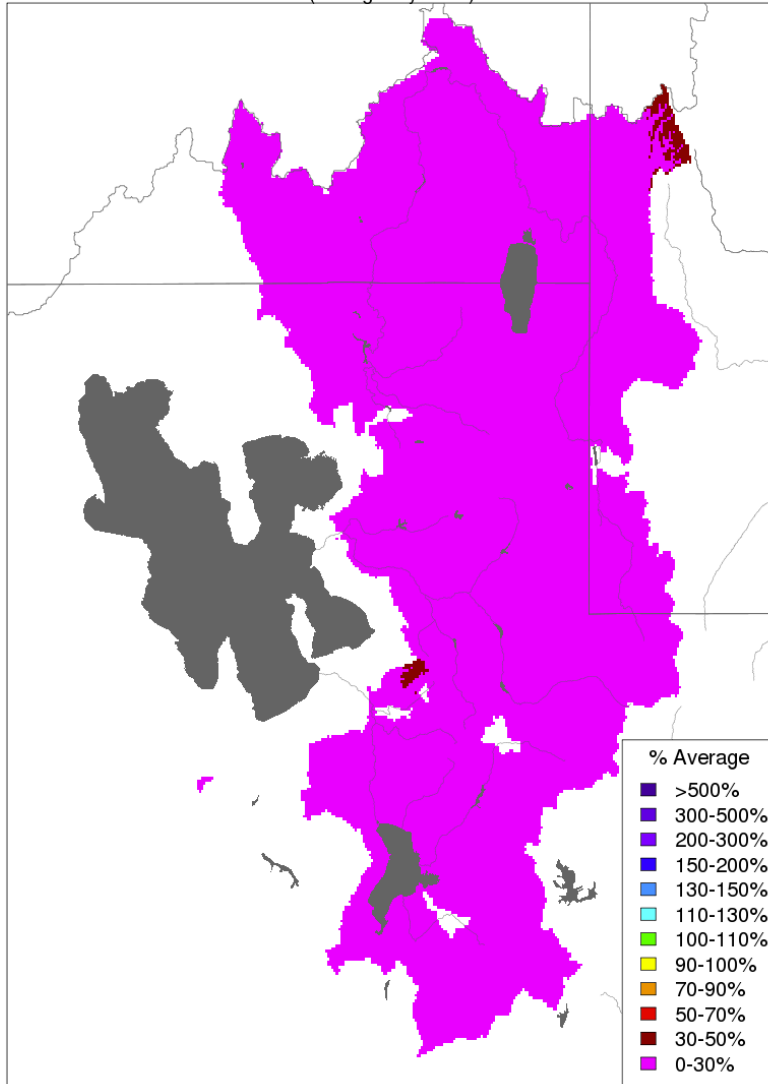


The most recent (2017-05-03) full period 50% ESP forecast is 170 kaf.
 Plot Created 2017-05-03 14:09:59, NOAA / NWS / CBRFC
 Forecasts in the forecast target period include observed values.

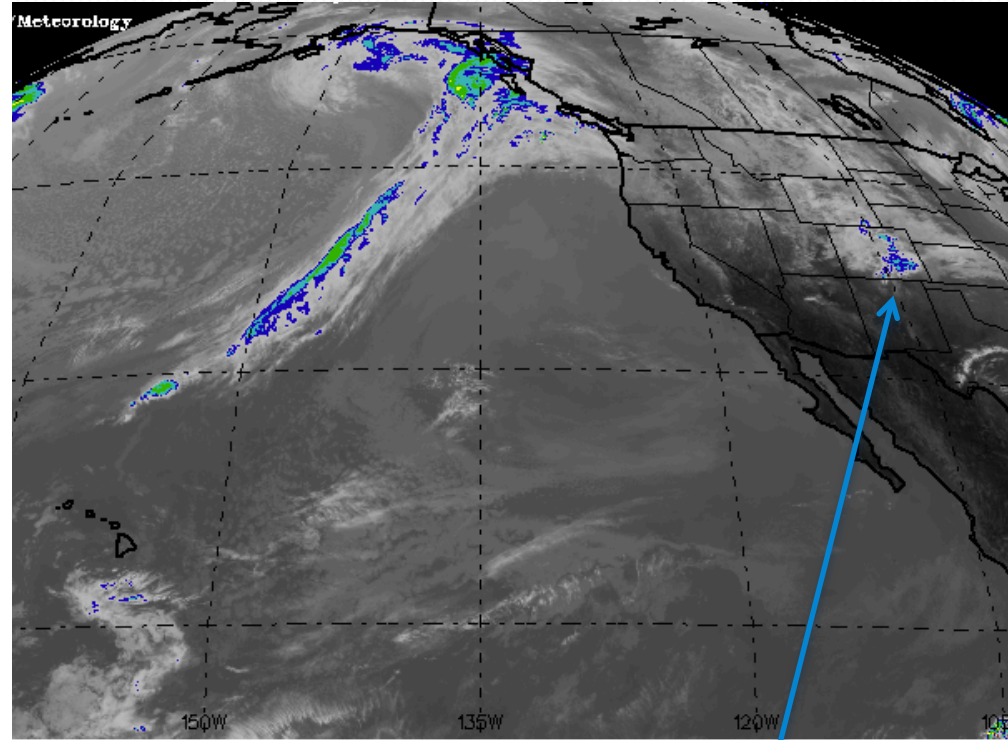
May 2017 Weather: Precipitation so far....

Month to Date Precipitation - May 04 2017

(Averaged by Basin)



Prepared by NOAA, Colorado Basin River Forecast Center
Salt Lake City, Utah, www.cbrfc.noaa.gov

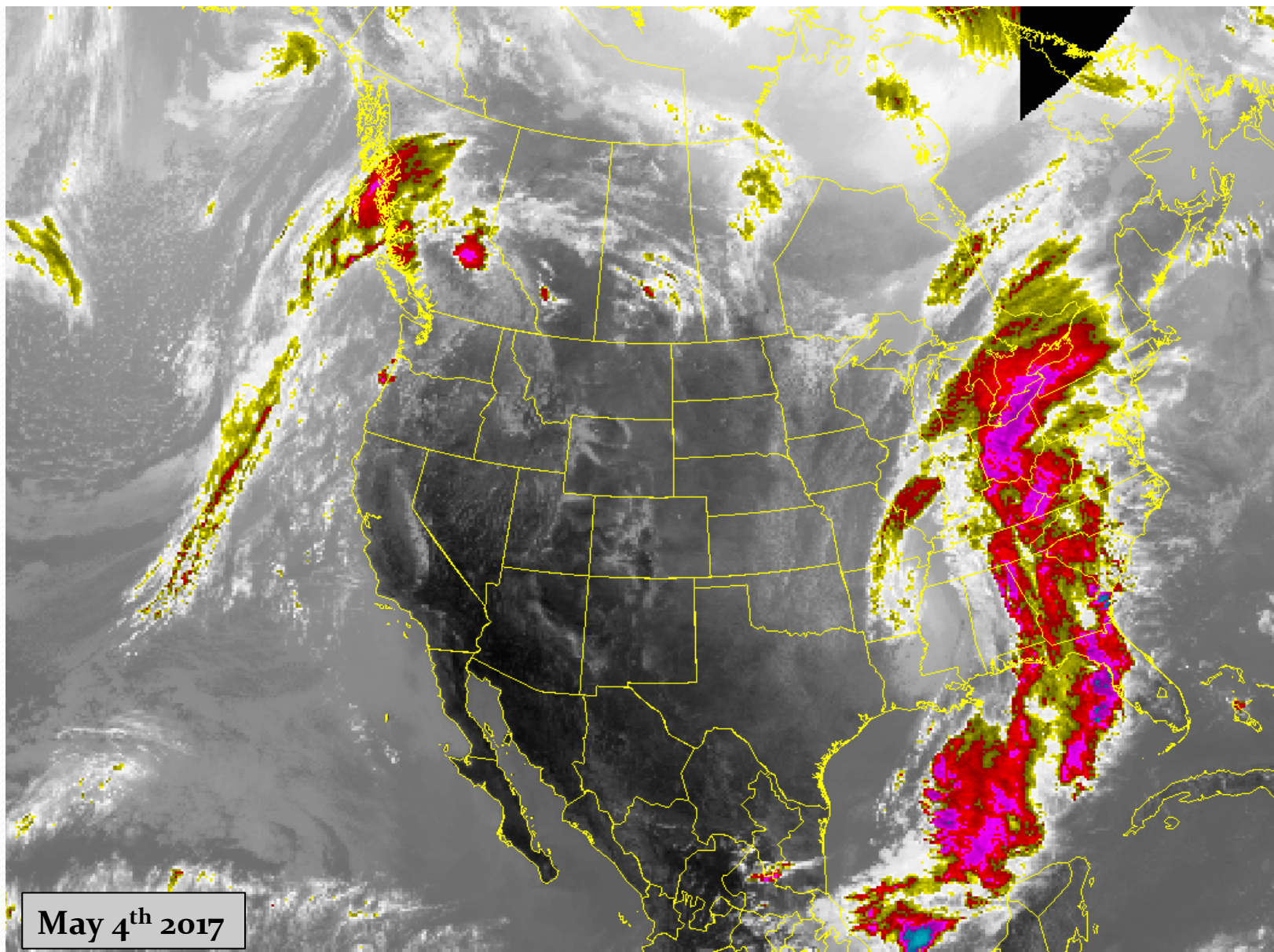


Francisco State University

Storm system exiting Colorado on May 2nd
but dry conditions over the Great Basin

Upcoming Weather and Impacts to Water Supply Forecasts

Satellite Image - Here comes the heat! Ridge of high pressure currently over the area. But a big forecast challenge lies ahead.

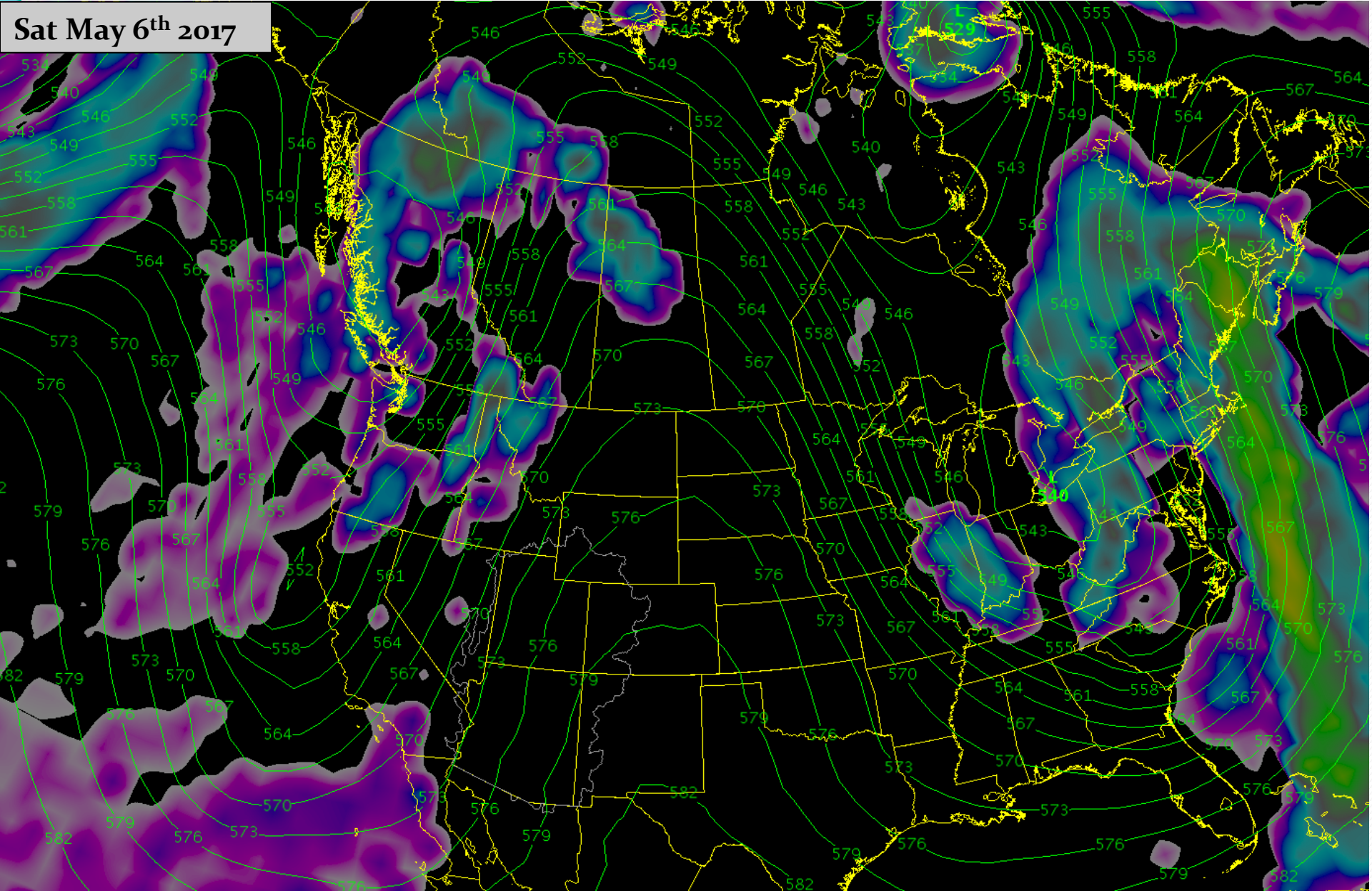


May 4th 2017

Upcoming Weather and Impacts to Water Supply Forecasts

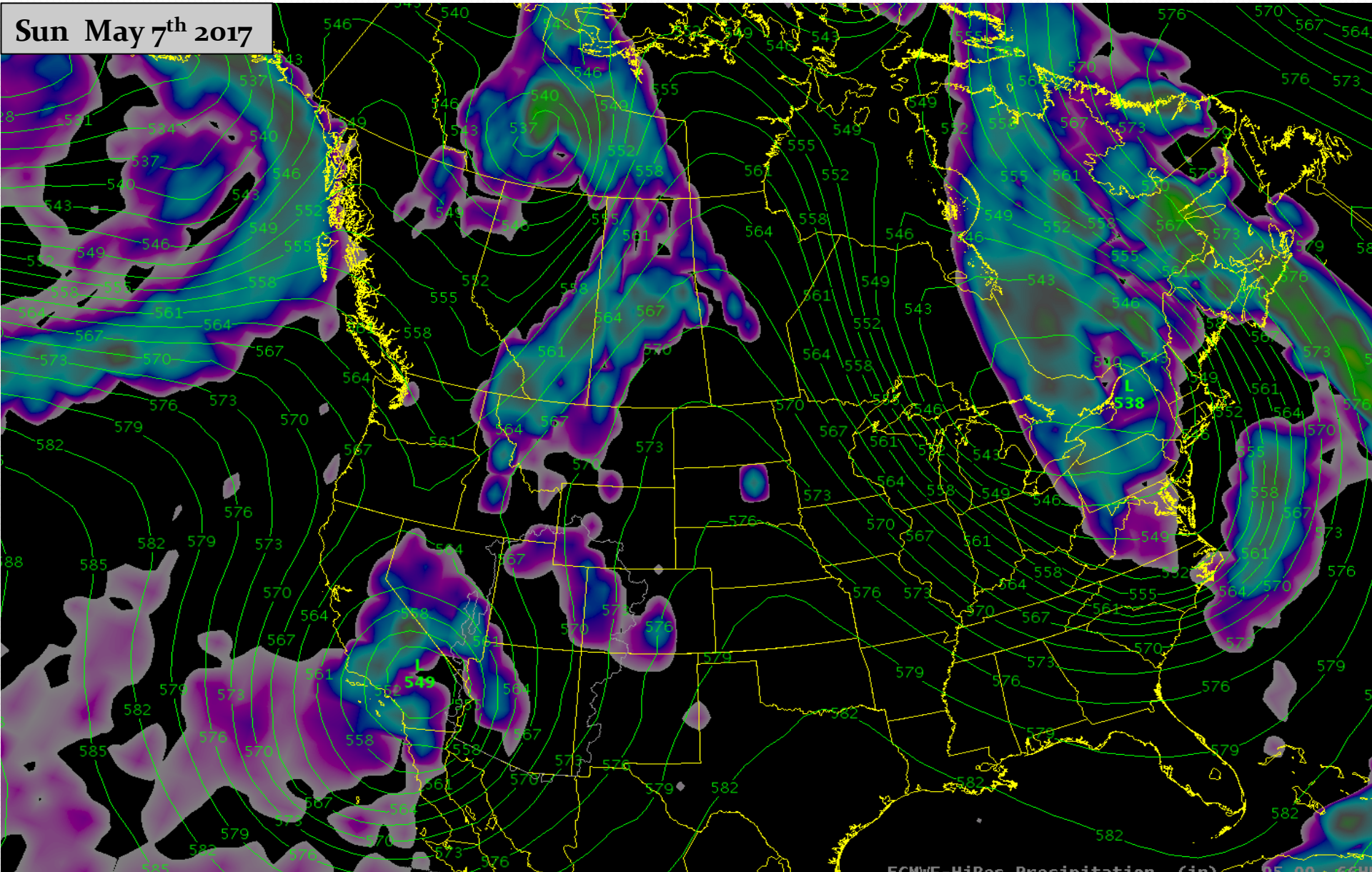
Closed/ Cutoff low pressure system developing off west coast. Ridge axis over eastern Colorado. Increasing southwest winds over Great Basin Max temperatures 10-15 degrees above average Fri-Sat. Rivers on the rise!

Sat May 6th 2017



Upcoming Weather and Impacts to Water Supply Forecasts

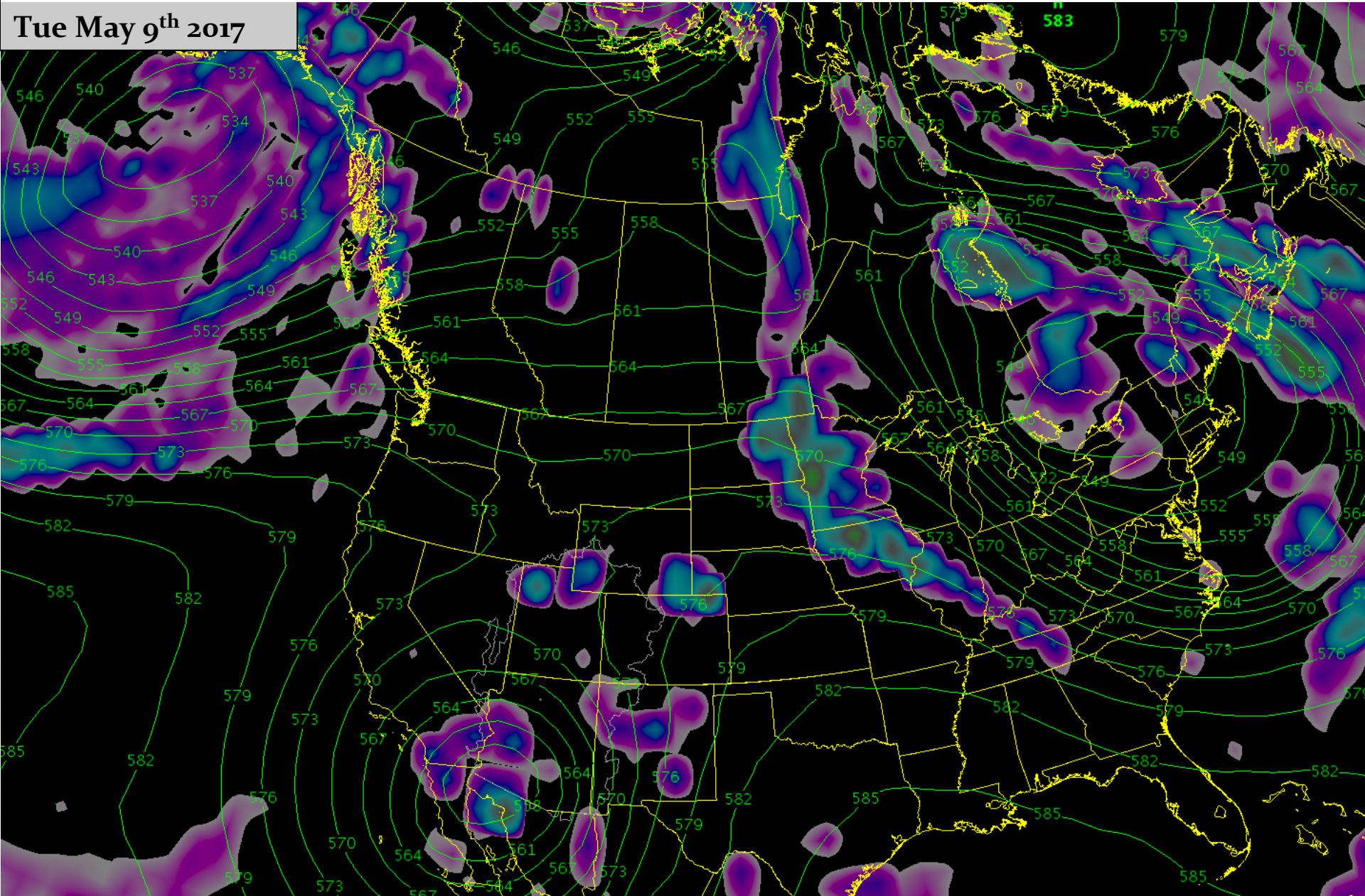
Cutoff low along the southern California Coast. Mild southwest flow over the area. Temperatures above average but increasing cloud cover if moisture is drawn northward. Increase in showers / thunderstorms possible.



Upcoming Weather and Impacts to Water Supply Forecasts

Cutoff low is still to the southwest but models suggest it begins moving. Huge forecast challenge as the track of the low pressure will have significant implications particularly farther south and east.

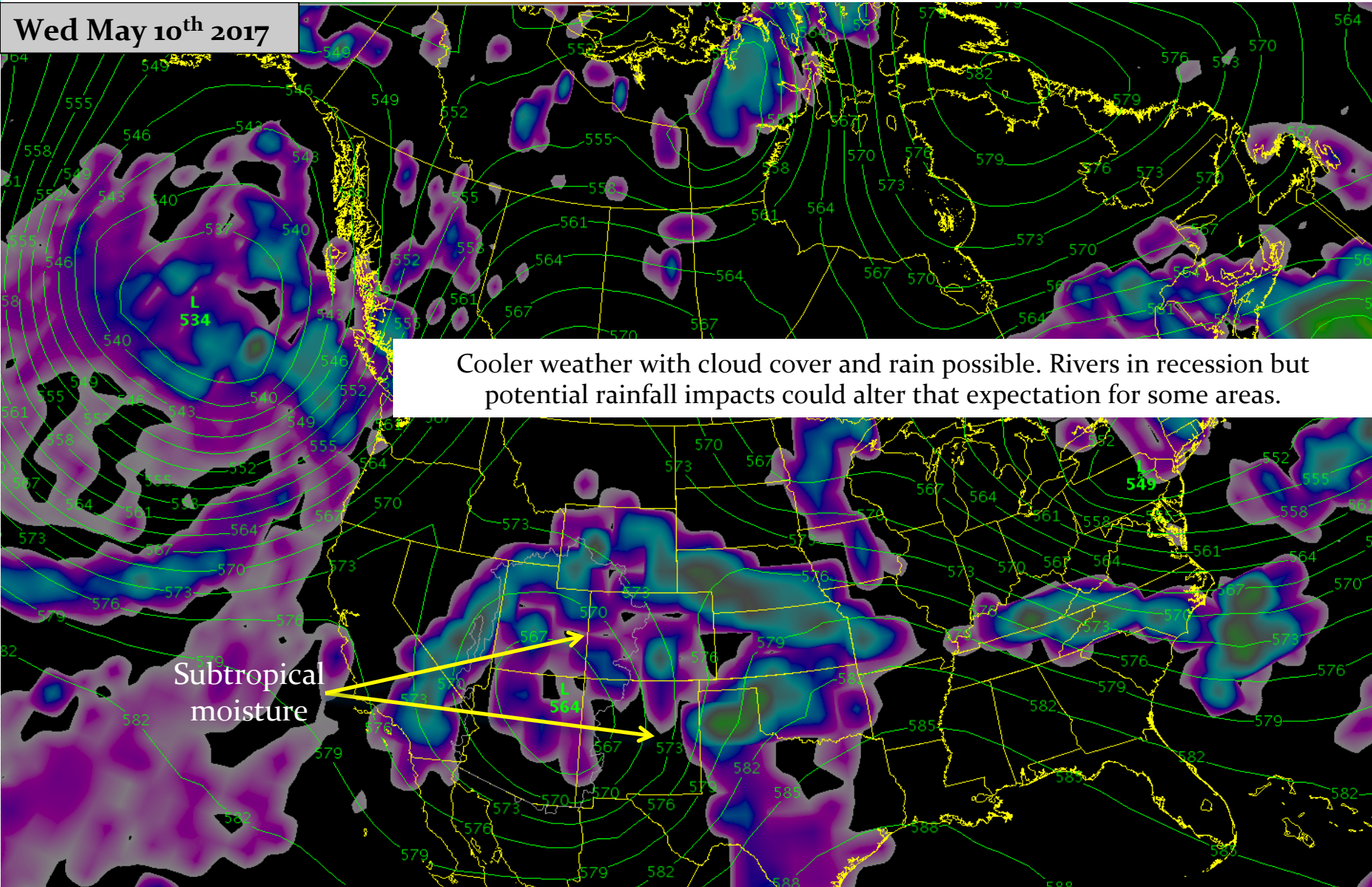
Tue May 9th 2017



Upcoming Weather and Impacts to Water Supply Forecasts

In this forecast scenario the low pressure lifts north. Sub-tropical moisture is tapped and drawn northward but remains south of the Great Basin. Showers and thunderstorms possible.

Wed May 10th 2017



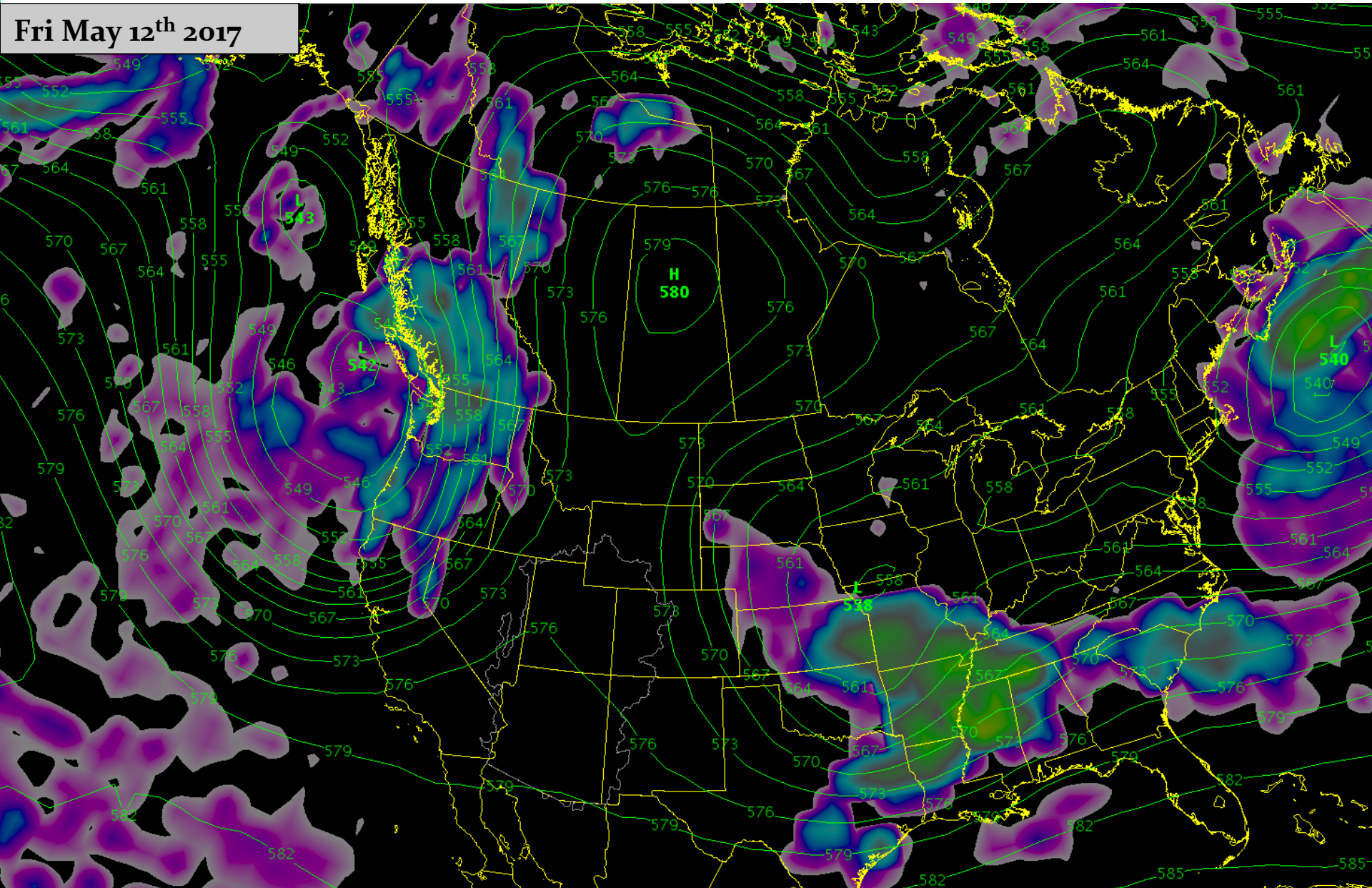
Cooler weather with cloud cover and rain possible. Rivers in recession but potential rainfall impacts could alter that expectation for some areas.

Subtropical moisture

Upcoming Weather and Impacts to Water Supply Forecasts

Cooler weather with cloud cover and showers possible. Rivers in recession but potential rainfall impacts could alter that expectation for some areas.

Fri May 12th 2017



Upcoming Weather and Impacts to Water Supply Forecasts

“The Cutoff Low – Weatherman’s Woe”

Implications of the closed / cutoff low

Computer models do not handle the position or track of these well.
Computer models struggle with the amount of moisture they contain.
The longer it stays off the coast the more moisture it picks up.

Latest forecast model:

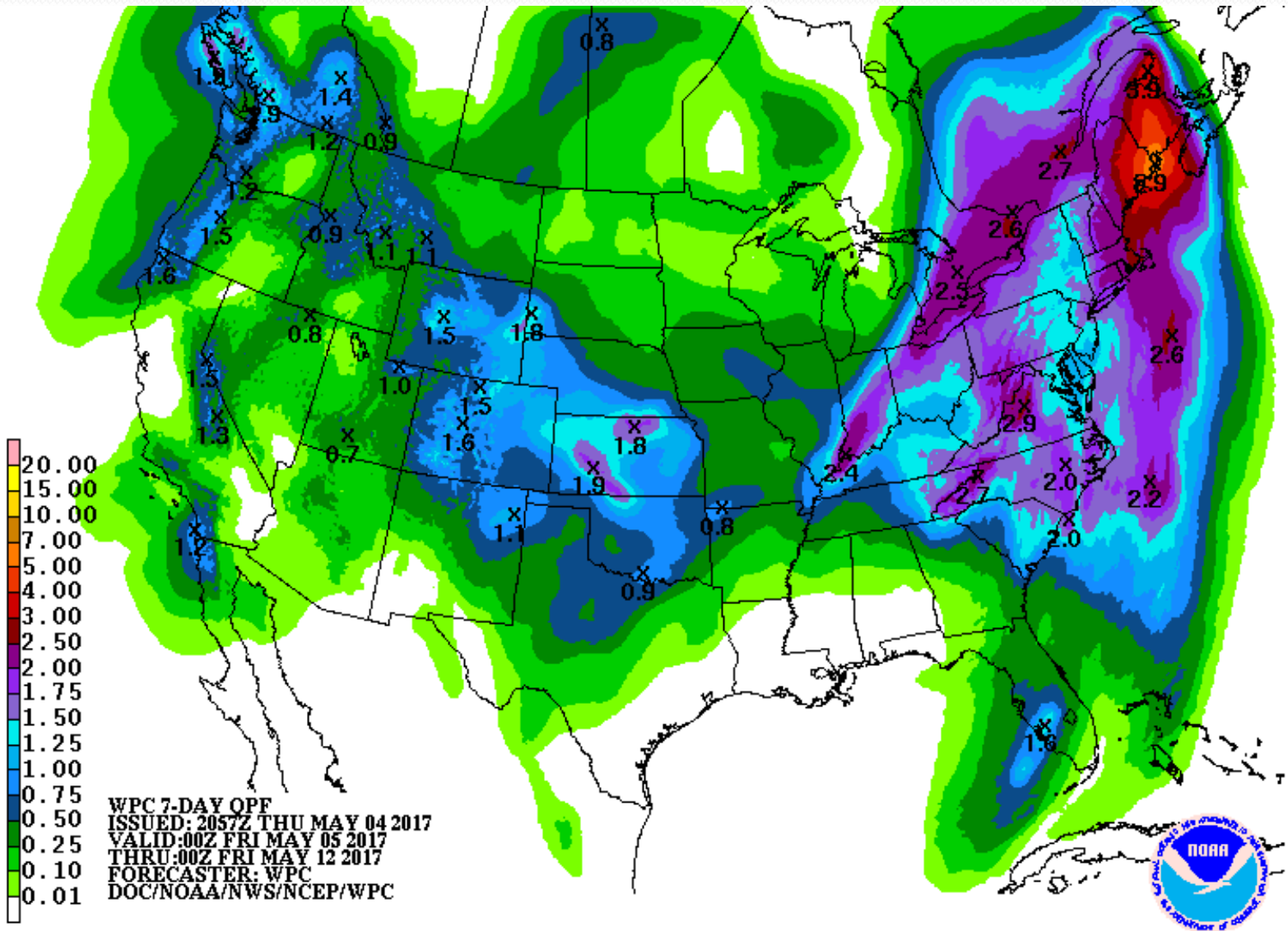
Expected to be over southwest Colorado Tue into Thursday
Heavier rain threat should be to the south and east of the Great Basin

The “Mights” associated with this type of low pressure:

If the low stays put longer than advertised: Mild temperatures & extended snowmelt
If the low drops farther south: less chance of precipitation.
If the low tracks farther north: A bigger precipitation threat for the Great Basin.

Upcoming Weather and Impacts to Water Supply Forecasts

Precipitation Forecast: 7 day total (May 5 - May 12th), most associated storms expected mid next week



Key Points

April brought cooler weather to the Great Basin, slowing snowmelt rates. Mid-month storm events allowed for some slight gains to high elevation snowpack

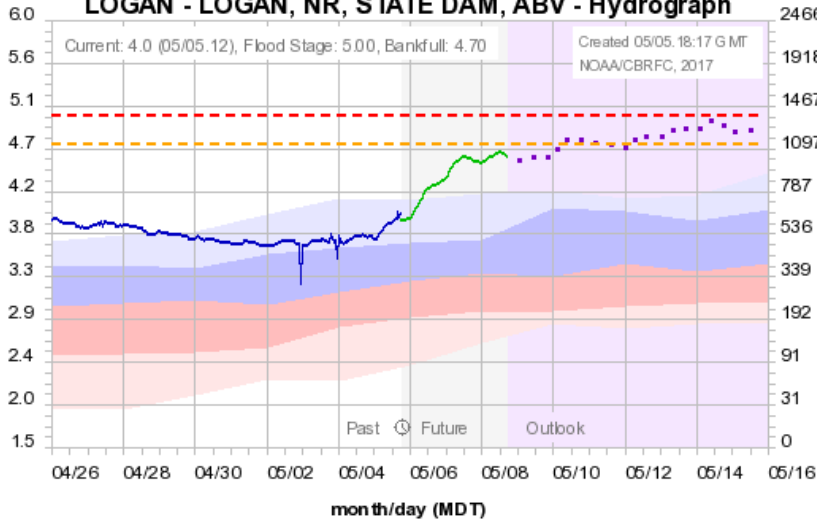
Saturated soil conditions exist in many areas which has and will most likely continue to result in efficient runoff response to rain and additional snowmelt

Significant snow still exists at the higher elevations in the Bear, Weber and Provo River basins. Significant runoff volumes are anticipated in these areas, with flooding possible as temperatures begin to rise

Possible minor flooding at a few locations this weekend...

Colorado Basin River Forecast Center

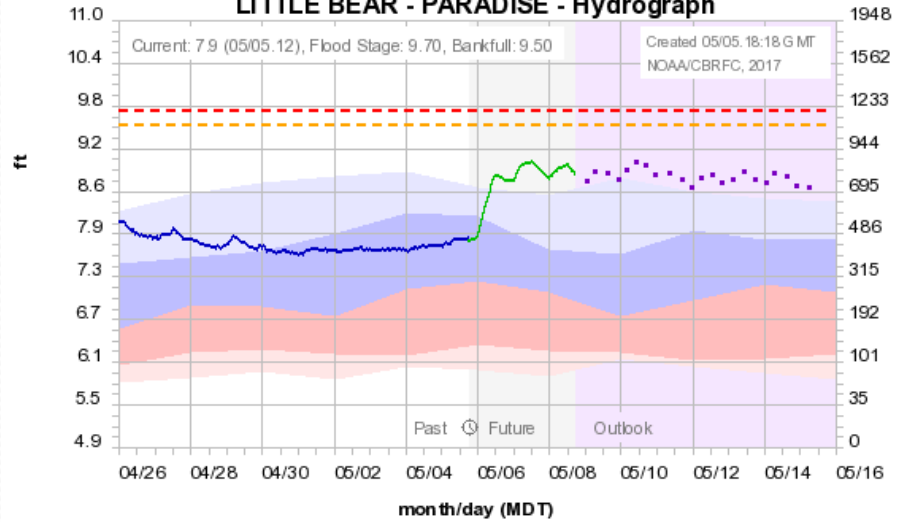
LOGAN - LOGAN, NR, STATE DAM, ABV - Hydrograph



Observed Forecast (05/05.16:00) Outlook (increasing uncertainty) Bankfull 4.70 Flood 5.0
Historical Exceedance Probability (USGS): 90-75% 75-50% 50-25% 25-10%

Colorado Basin River Forecast Center

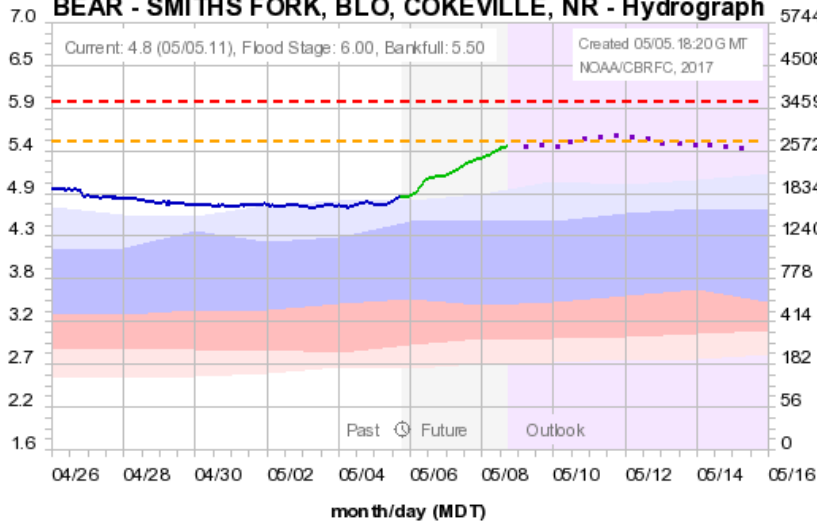
LITTLE BEAR - PARADISE - Hydrograph



Observed Forecast (05/05.16:00) Outlook (increasing uncertainty) Bankfull 9.50 Flood 9.7
Historical Exceedance Probability (USGS): 90-75% 75-50% 50-25% 25-10%

Colorado Basin River Forecast Center

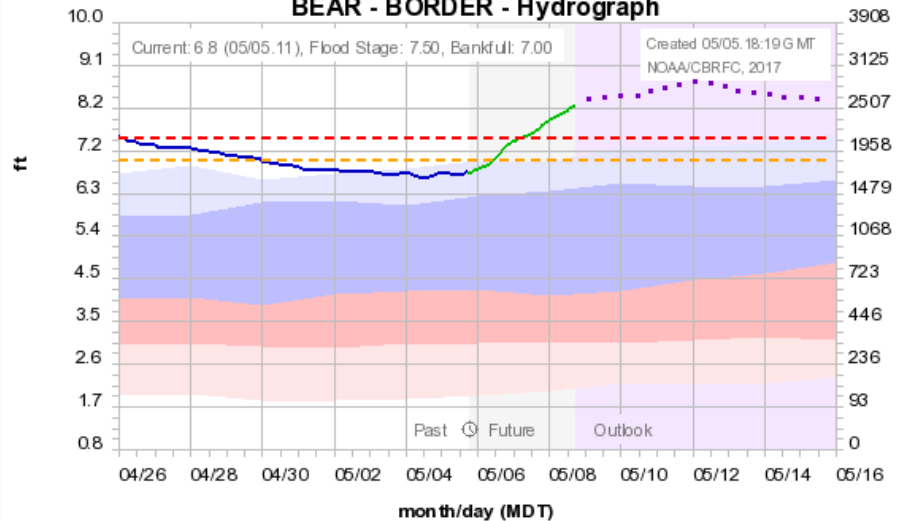
BEAR - SMITHS FORK, BLO, COKEVILLE, NR - Hydrograph



Observed Forecast (05/05.16:00) Outlook (increasing uncertainty) Bankfull 5.50 Flood 6.0
Historical Exceedance Probability (USGS): 90-75% 75-50% 50-25% 25-10%

Colorado Basin River Forecast Center

BEAR - BORDER - Hydrograph



Observed Forecast (05/05.16:00) Outlook (increasing uncertainty) Bankfull 7.00 Flood 7.5
Historical Exceedance Probability (USGS): 90-75% 75-50% 50-25% 25-10%

Daily deterministic forecasts available on the CBRFC web page: www.cbrfc.noaa.gov

2017 Water Supply Briefing Schedule

- This was the last scheduled briefing of the year!
 - We can schedule more if there's a want/need for additional briefings
 - If something really unusual happens, we can initiate additional briefings
- Please contact us directly if you have any concerns or need for information

CBRFC Water Supply Contacts

Please contact us with any questions

Michelle Stokes – Hydrologist In Charge

michelle.stokes@noaa.gov

Paul Miller– Service Coordination Hydrologist

paul.miller@noaa.gov

Basin Focal Points (Forecasters)

Brenda Alcorn – Colorado River, Lake Powell Focal Point

brenda.alcorn@noaa.gov

Greg Smith – San Juan, Gunnison, Dolores Focal Point

greg.smith@noaa.gov

Ashley Nielson – Green River Basin Focal Point

ashley.nielson@noaa.gov

Tracy Cox – Lower Colorado Basin, Virgin, Sevier Focal Point

tracy.cox@noaa.gov

Brent Bernard – Great Basin Focal Point

brent.bernard@noaa.gov