

CBRFC June 2017 CUWCD Briefing

1pm June 6, 2017

Ashley Nielson

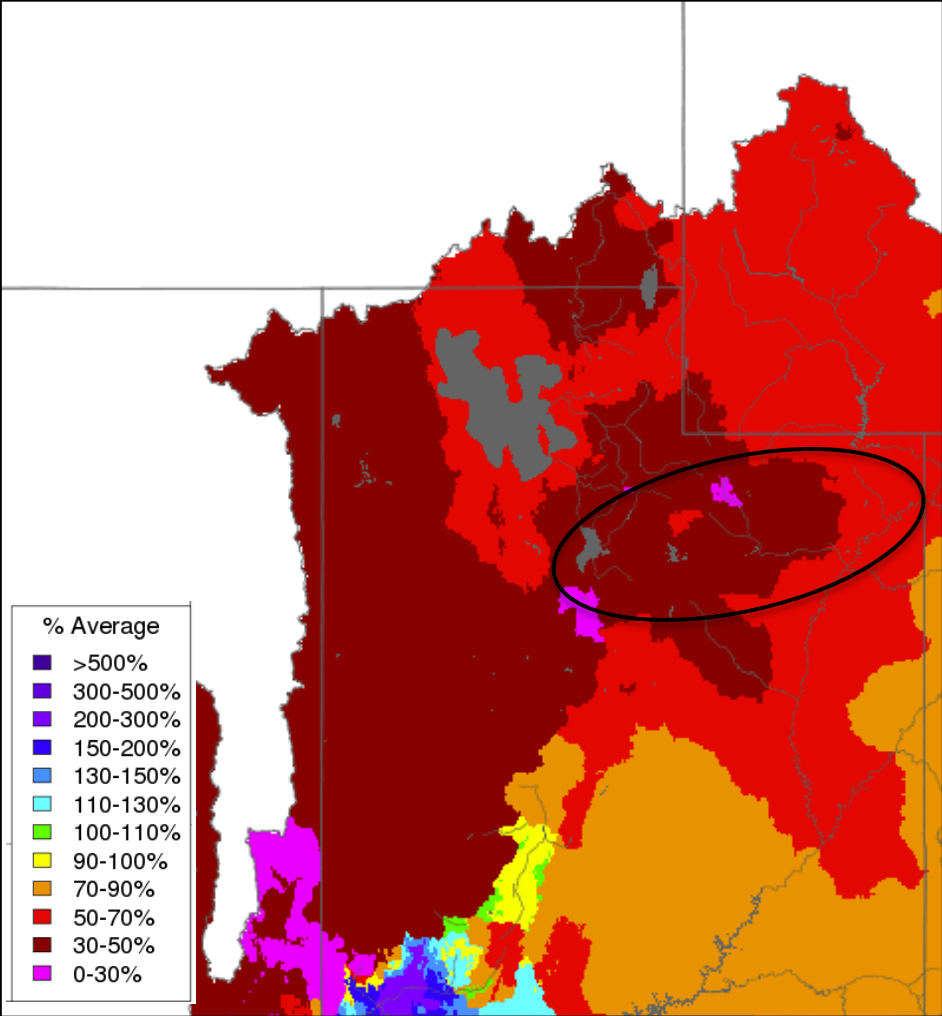
Senior Hydrologist

Today's Presentation

- **May Weather**
 - Below normal precipitation
 - Normal to below normal temperatures
 - Periods of above and below normal
- **Snowpack conditions**
 - Significant melt!
 - Where is the remaining snow?
- **May 2017 Water Supply Forecast Overview**
 - Decreases to forecasts
- **Upcoming Weather**
- **Current Conditions**
 - 10-Day Streamflow Forecasts

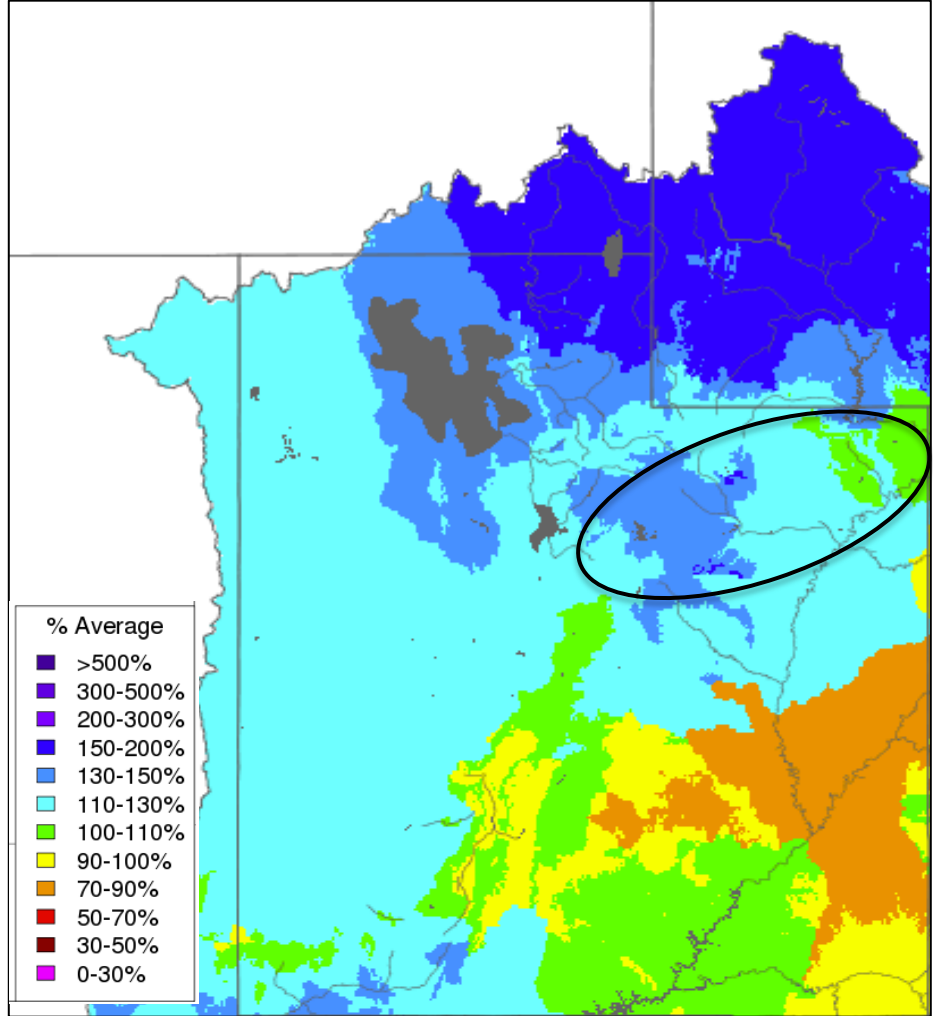
May Weather: Precipitation

Monthly Precipitation - May 2017
(Averaged by Basin)



Duchesne: 40%
Provo: 40%

Water Year Precipitation, October 2016 - May 2017
(Averaged by Basin)

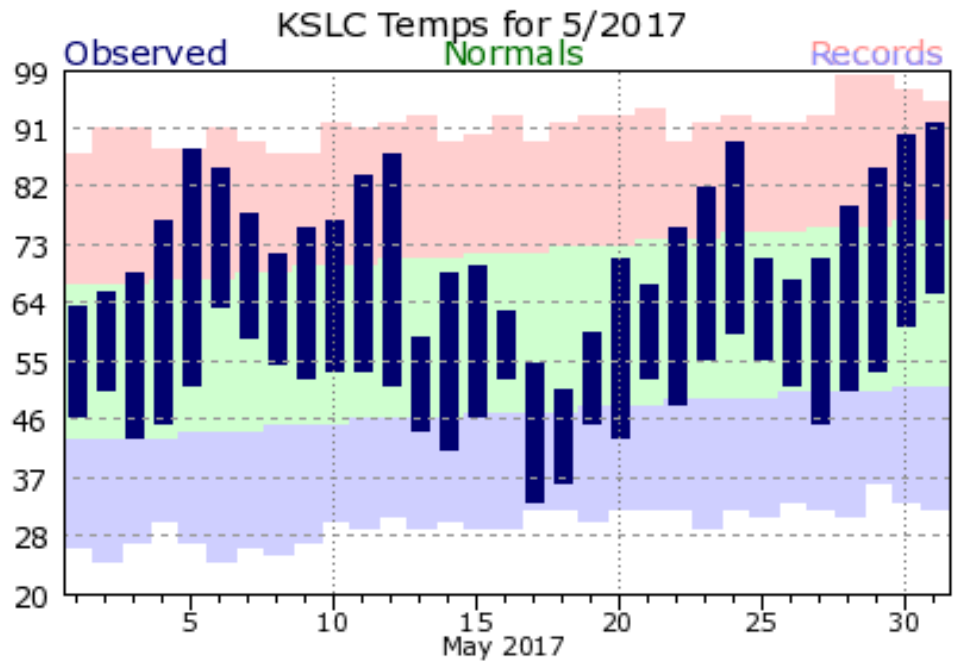
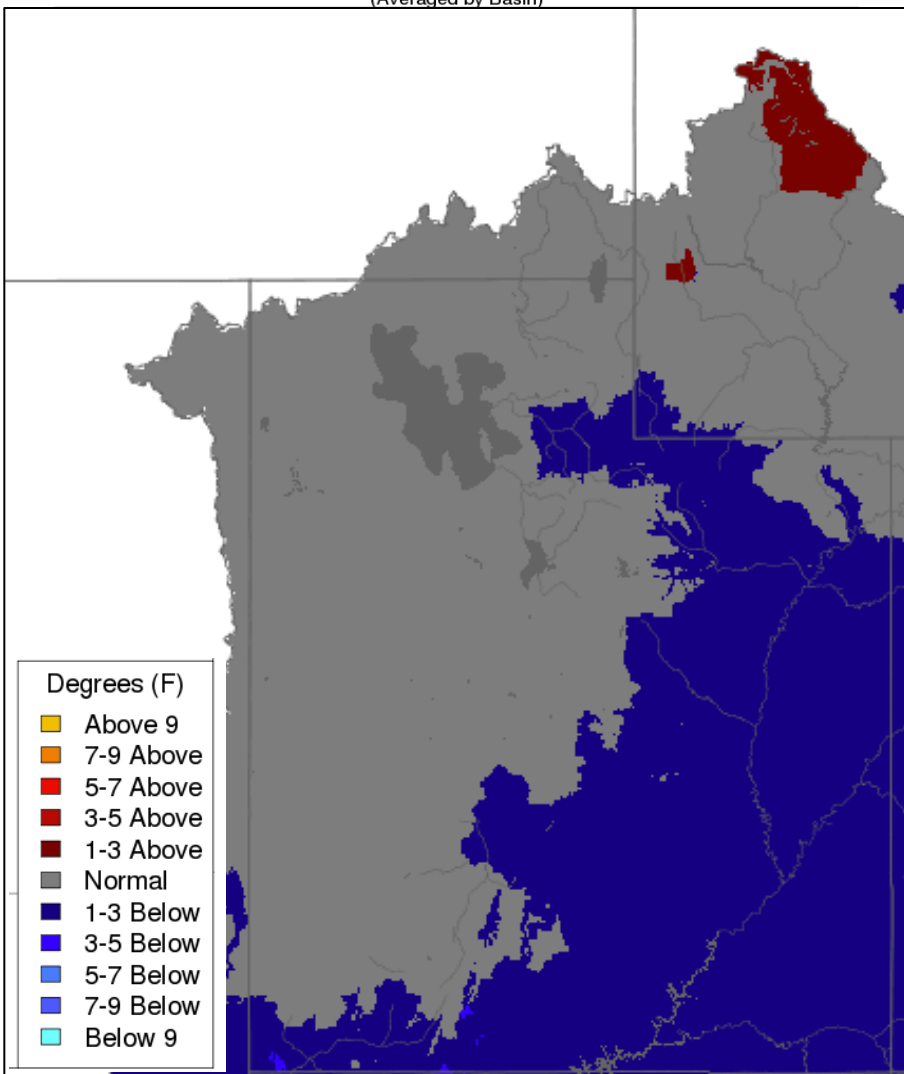


Duchesne: 130%
Provo: 132%

May Weather: Temperature

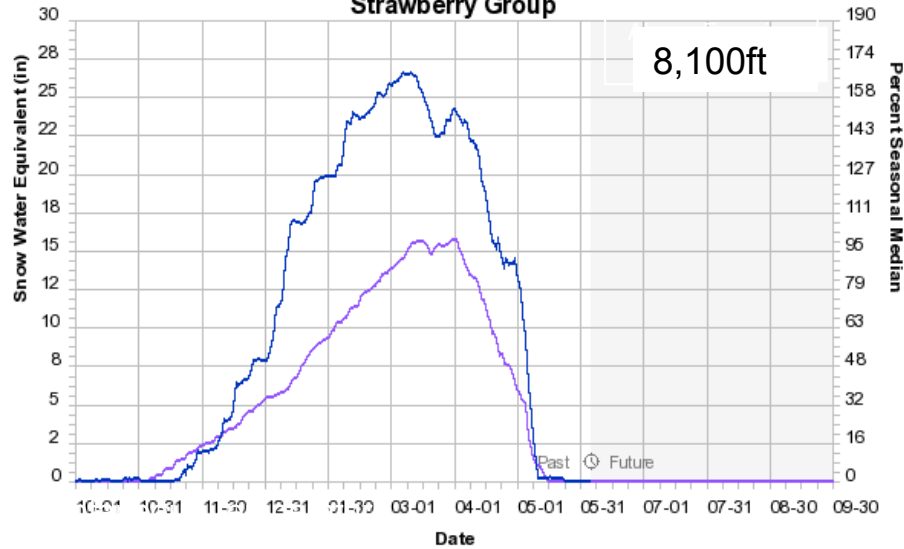
Below normal to normal mean monthly temperatures
 Periods of both above and below normal temperatures

Max Temp - Monthly Deviation - May 2017
 (Averaged by Basin)

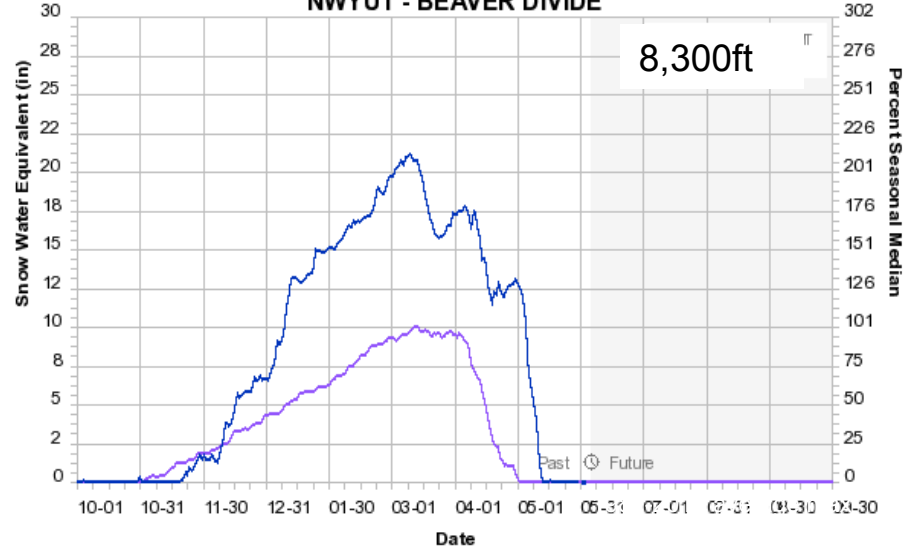


Snowpack Conditions: SNOTEL

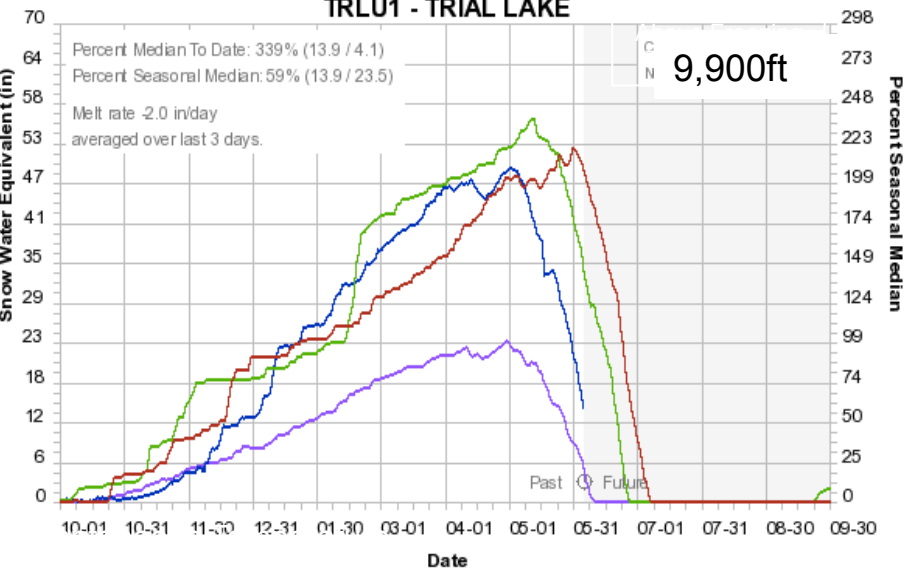
Colorado Basin River Forecast Center
Strawberry Group



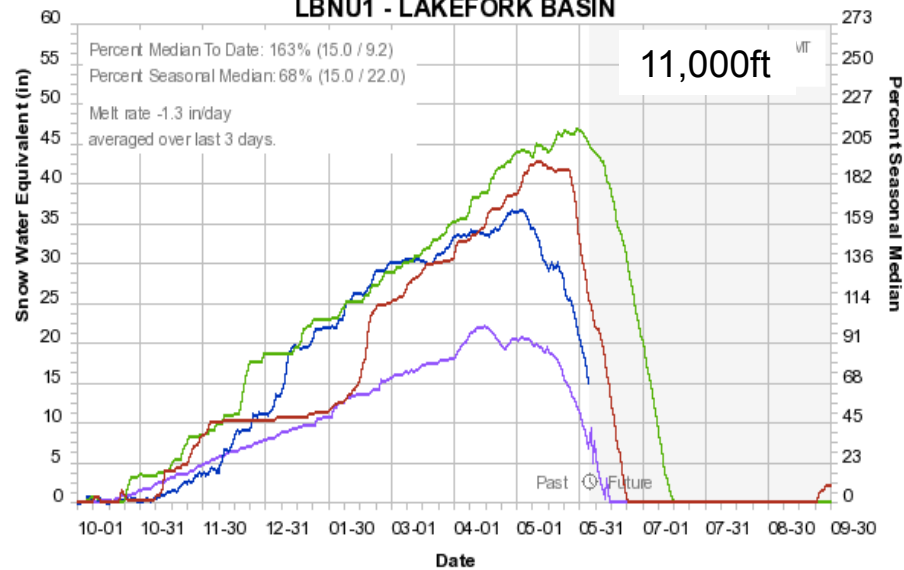
Colorado Basin River Forecast Center
NWyU1 - BEAVER DIVIDE



Colorado Basin River Forecast Center
TRLU1 - TRIAL LAKE

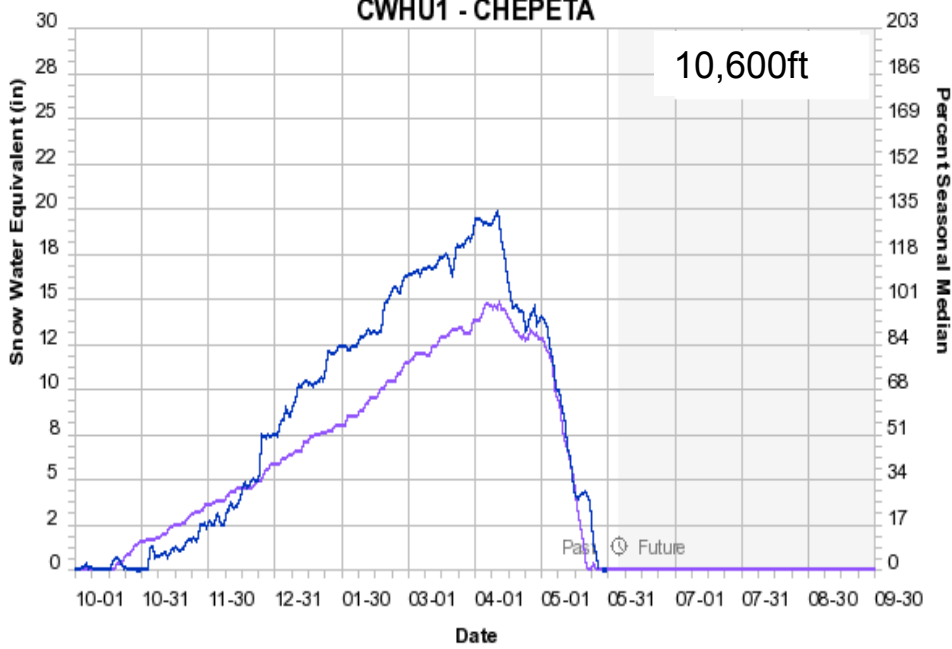


Colorado Basin River Forecast Center
LBNU1 - LAKEFORK BASIN

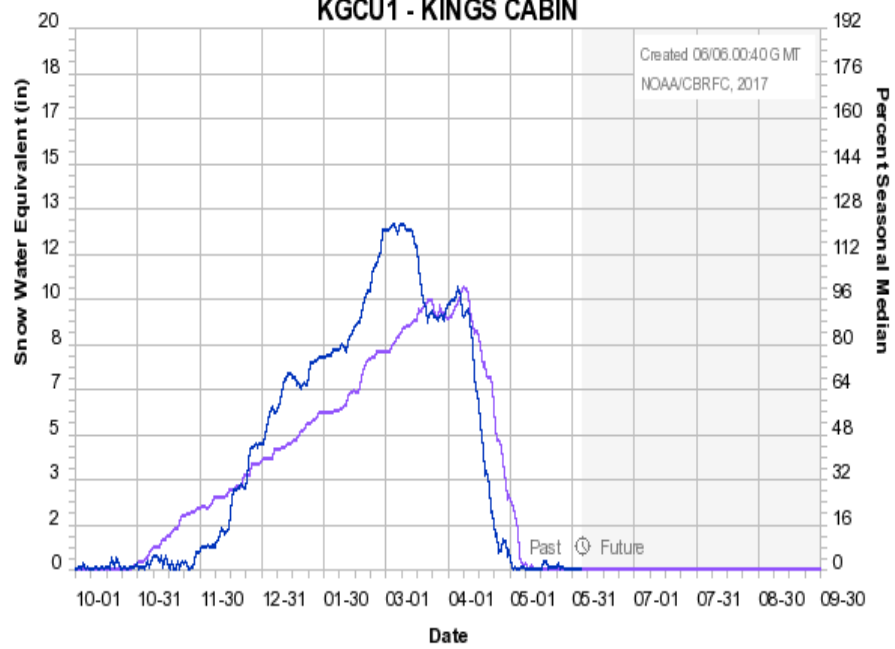


Snowpack Conditions: SNOTEL

Colorado Basin River Forecast Center
CWHU1 - CHEPETA



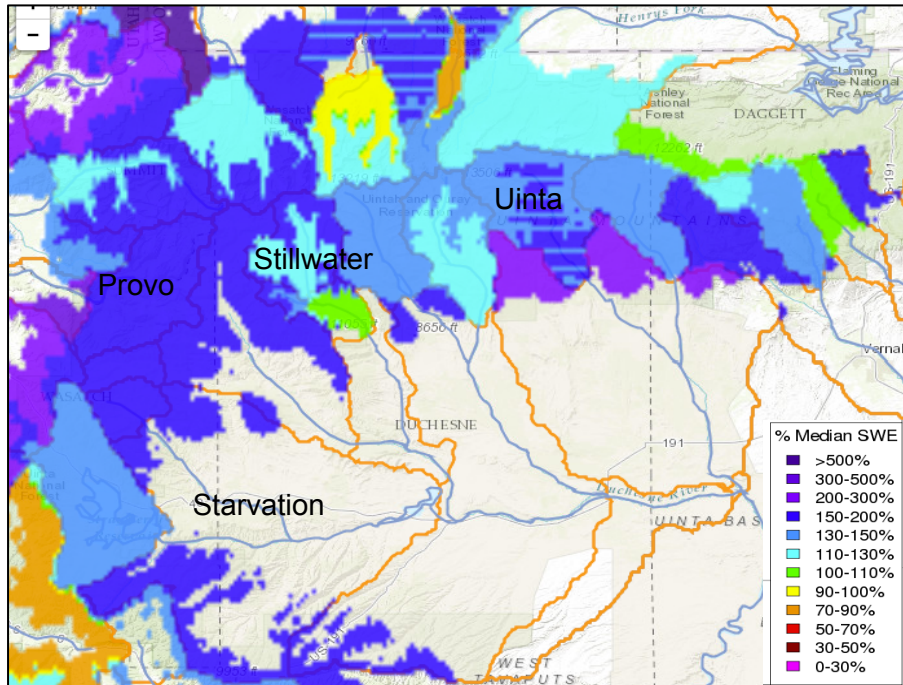
Colorado Basin River Forecast Center
KGPU1 - KINGS CABIN



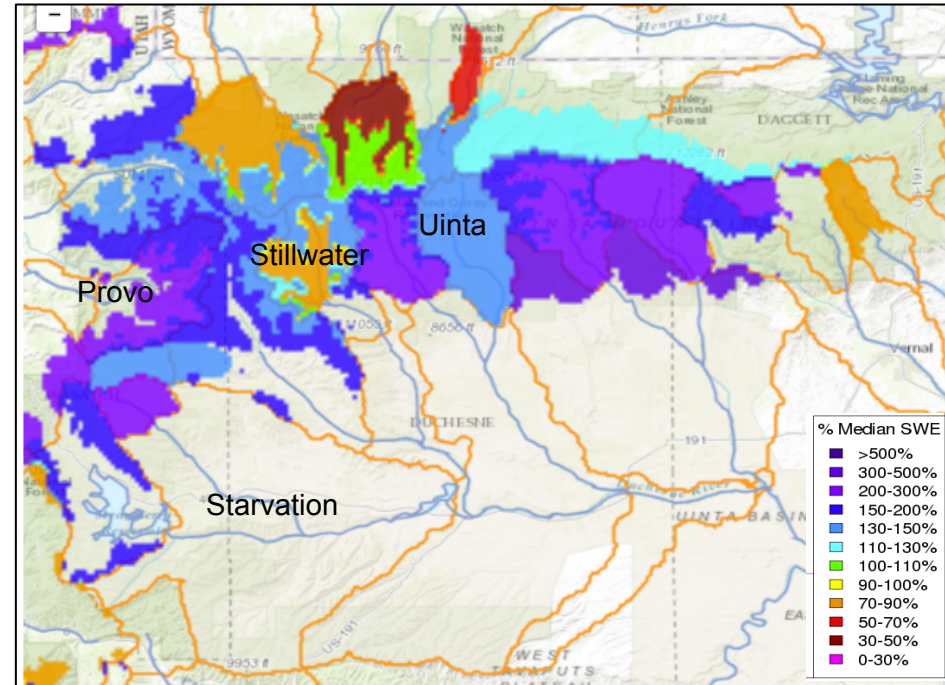
Snowpack Conditions: CBRFC MODEL

CBRFC MODEL SNOW (% median):

May 1 2017



June 1 2017

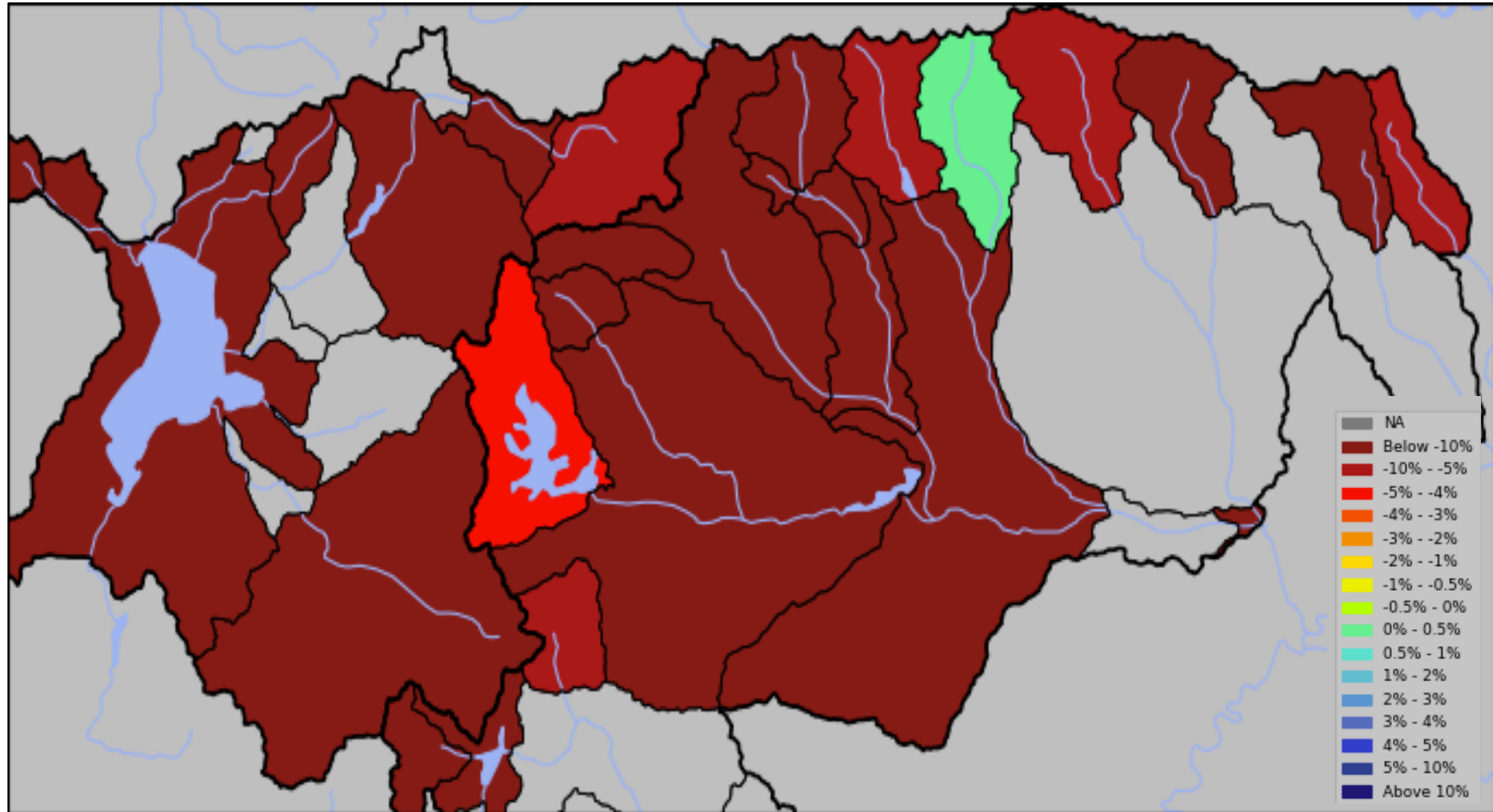


Significant snowmelt has occurred at all elevations since May 1st

There is uncertainty in model snowpack especially during the melt period. We verify model snow with observed streamflow, SNOTEL (if not melted out), and satellite images (if not cloudy).

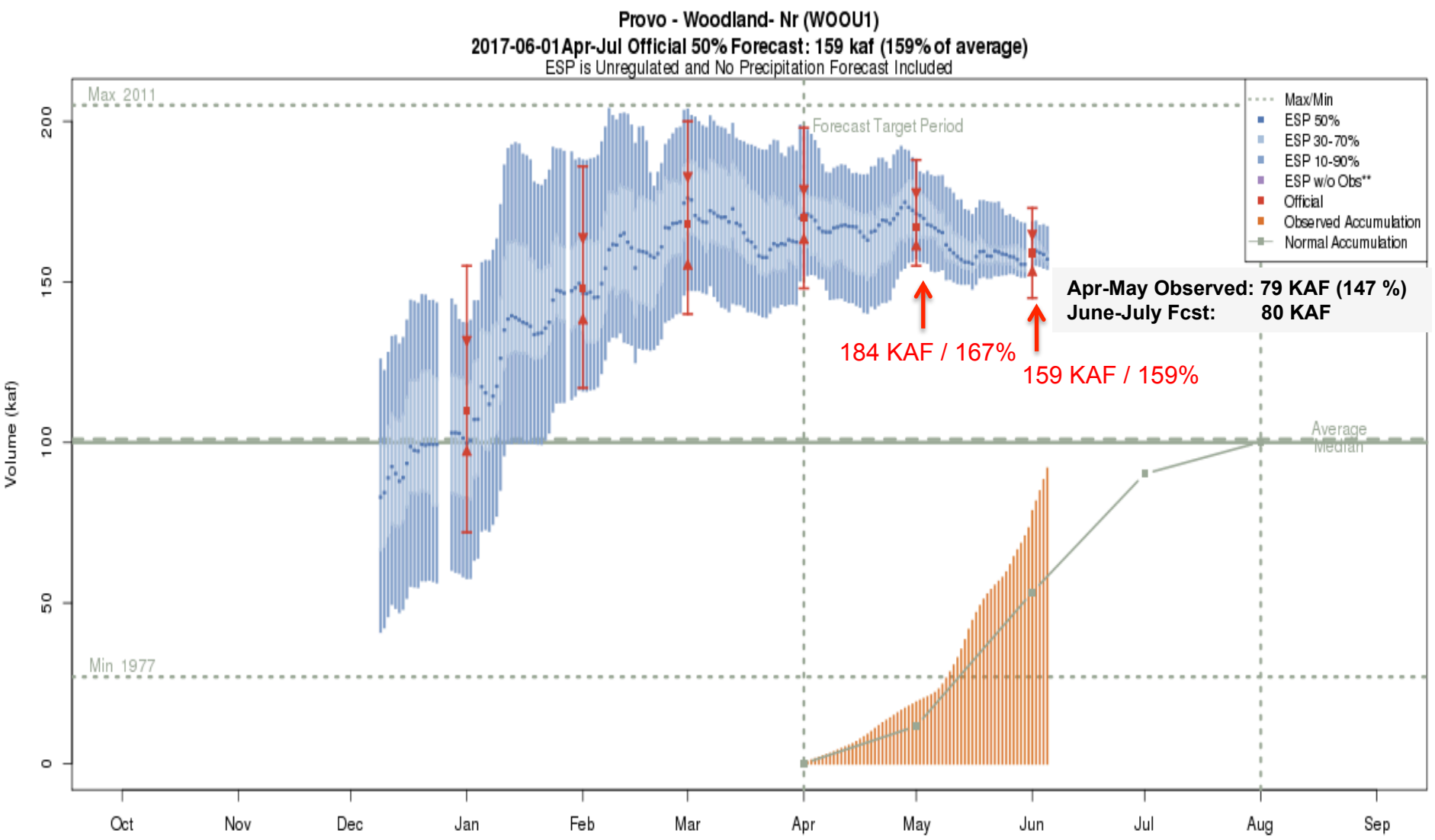
June 1st Water Supply Forecasts

April-July Forecast Streamflow Volumes
(% of Average Change from May 1st Forecasts)



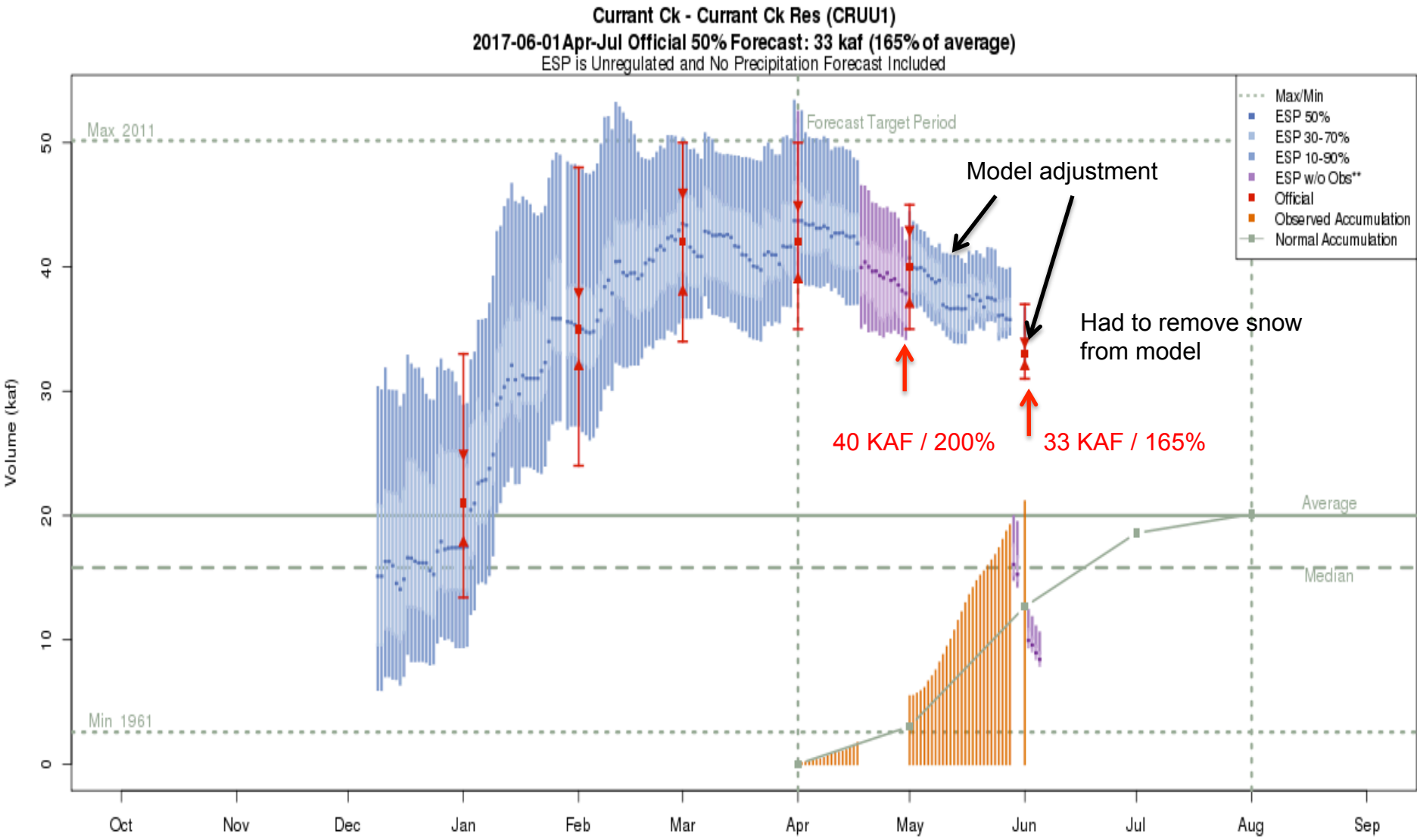
~5-20% decrease to forecasts since May 1st

Forecasts: Provo nr Hailstone



The most recent (2017-06-05) full period 50% ESP forecast is 157 kaf.
 Plot Created 2017-06-05 15:45:52, NOAA / NWS / CBRFC
 Forecasts in the forecast target period include observed values.

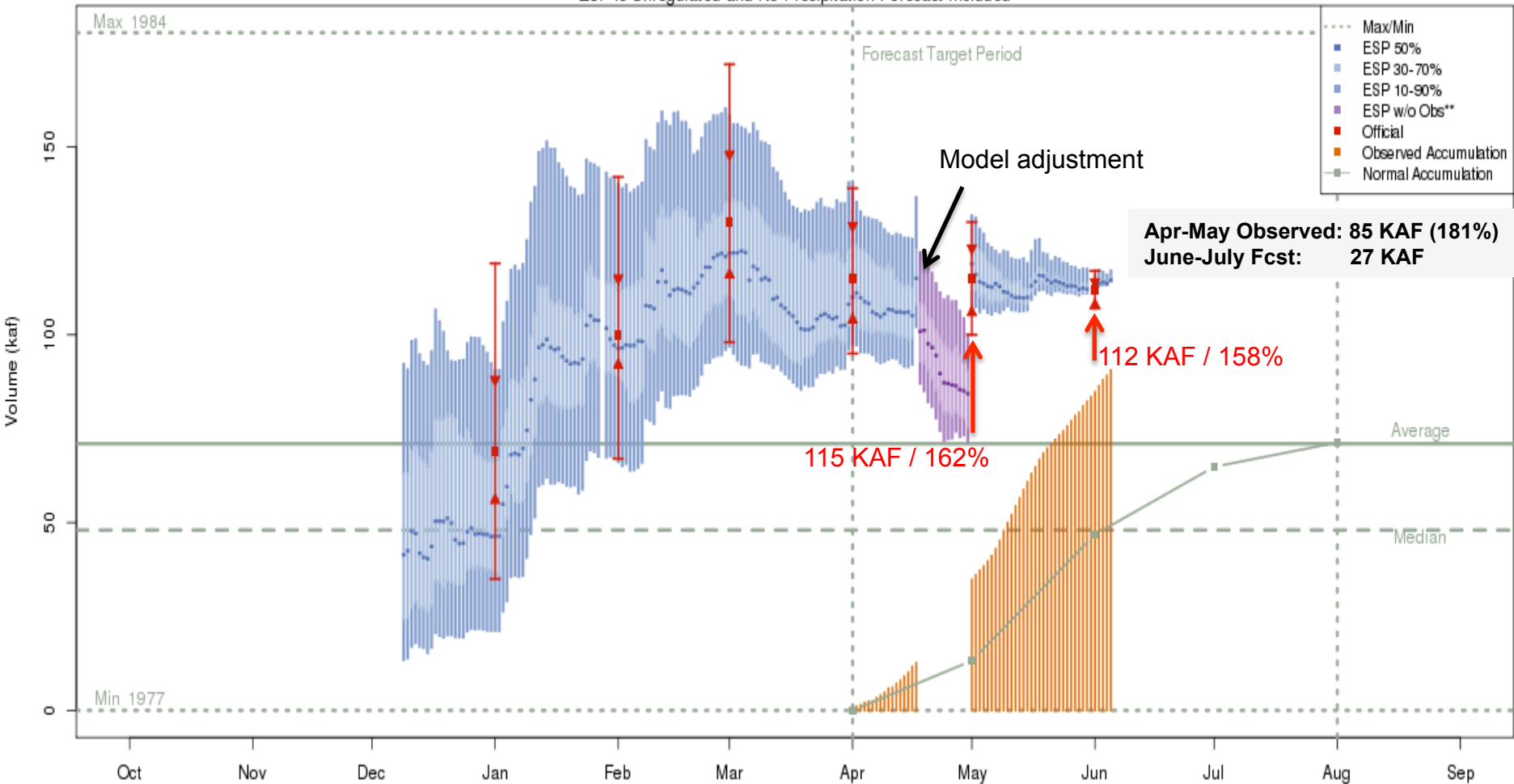
Forecasts: Currant Creek



The most recent (2017-06-01) full period 50% ESP forecast is 33 kaf.
 Plot Created 2017-06-06 08:20:36, NOAA / NWS / CBRFC
 **Purple ESP forecasts do not include observed and are not total runoff.

Forecasts: Strawberry nr Solider Springs

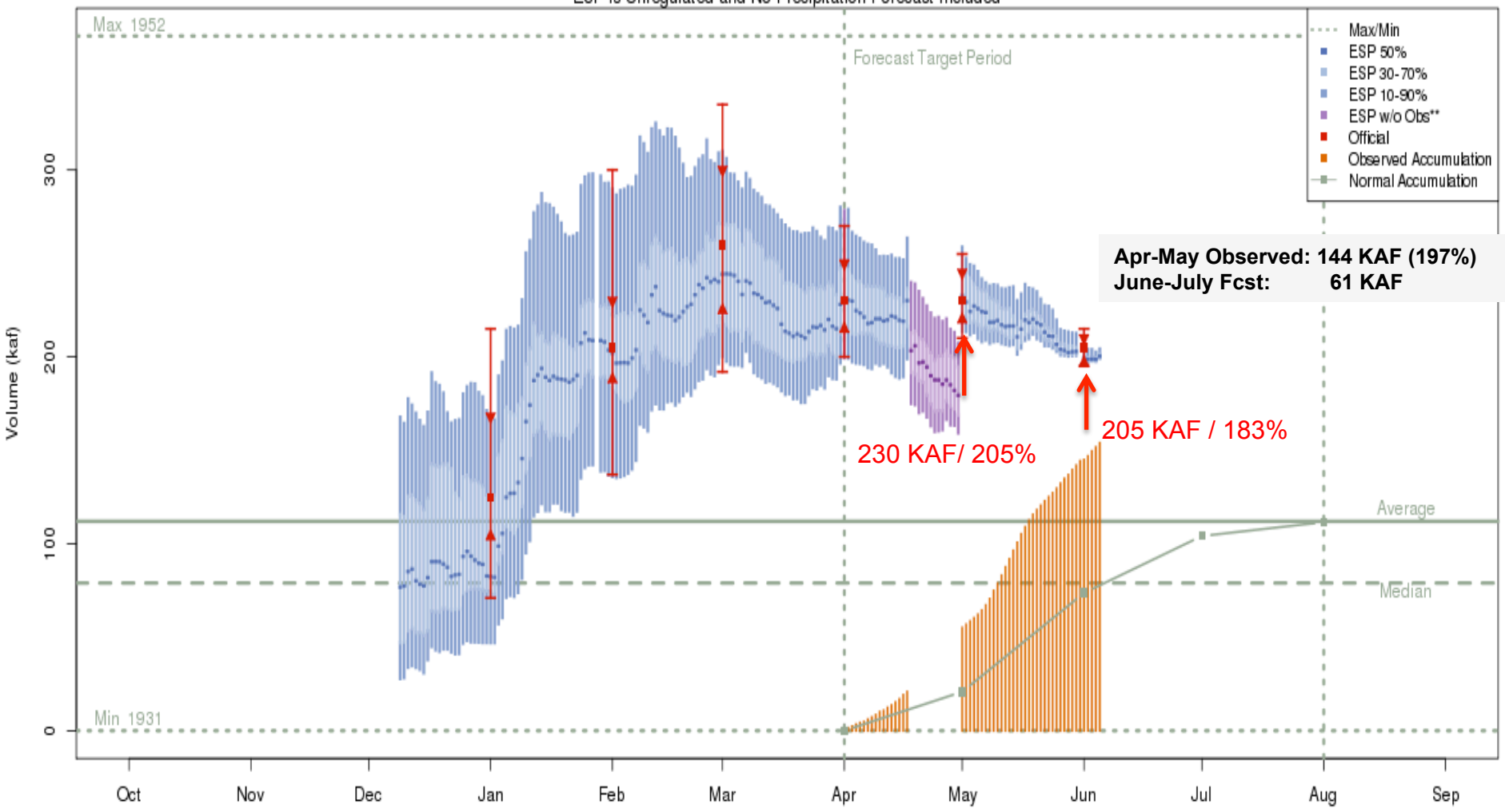
Strawberry - Solider Springs-nr - Strawberry Res (STIU1)
 2017-06-01 Apr-Jul Official 50% Forecast: 112 kaf (158% of average)
 ESP is Unregulated and No Precipitation Forecast Included



The most recent (2017-06-05) full period 50% ESP forecast is 115 kaf.
 Plot Created 2017-06-06 06:53:14, NOAA / NWS / CBRFC
 **Purple ESP forecasts do not include observed and are not total runoff.

Forecasts: Starvation Reservoir

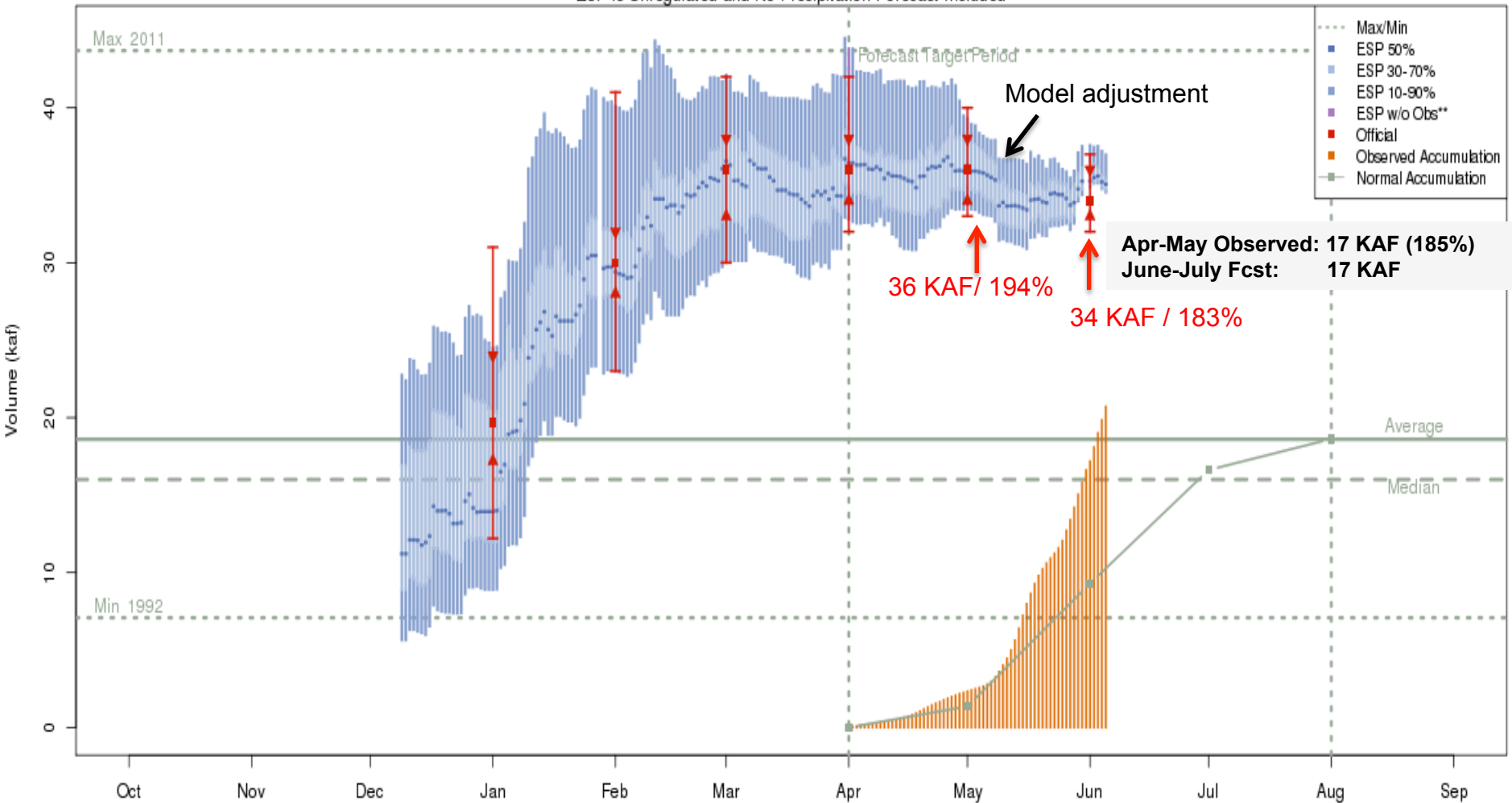
Strawberry - Starvation Res- Duchesne- Nr (STAU1)
 2017-06-01 Apr-Jul Official 50% Forecast: 205 kaf (183% of average)
 ESP is Unregulated and No Precipitation Forecast Included



The most recent (2017-06-05) full period 50% ESP forecast is 200 kaf.
 Plot Created 2017-06-06 06:52:56, NOAA / NWS / CBRFC
 **Purple ESP forecasts do not include observed and are not total runoff.

Forecasts: West Fork below Vat

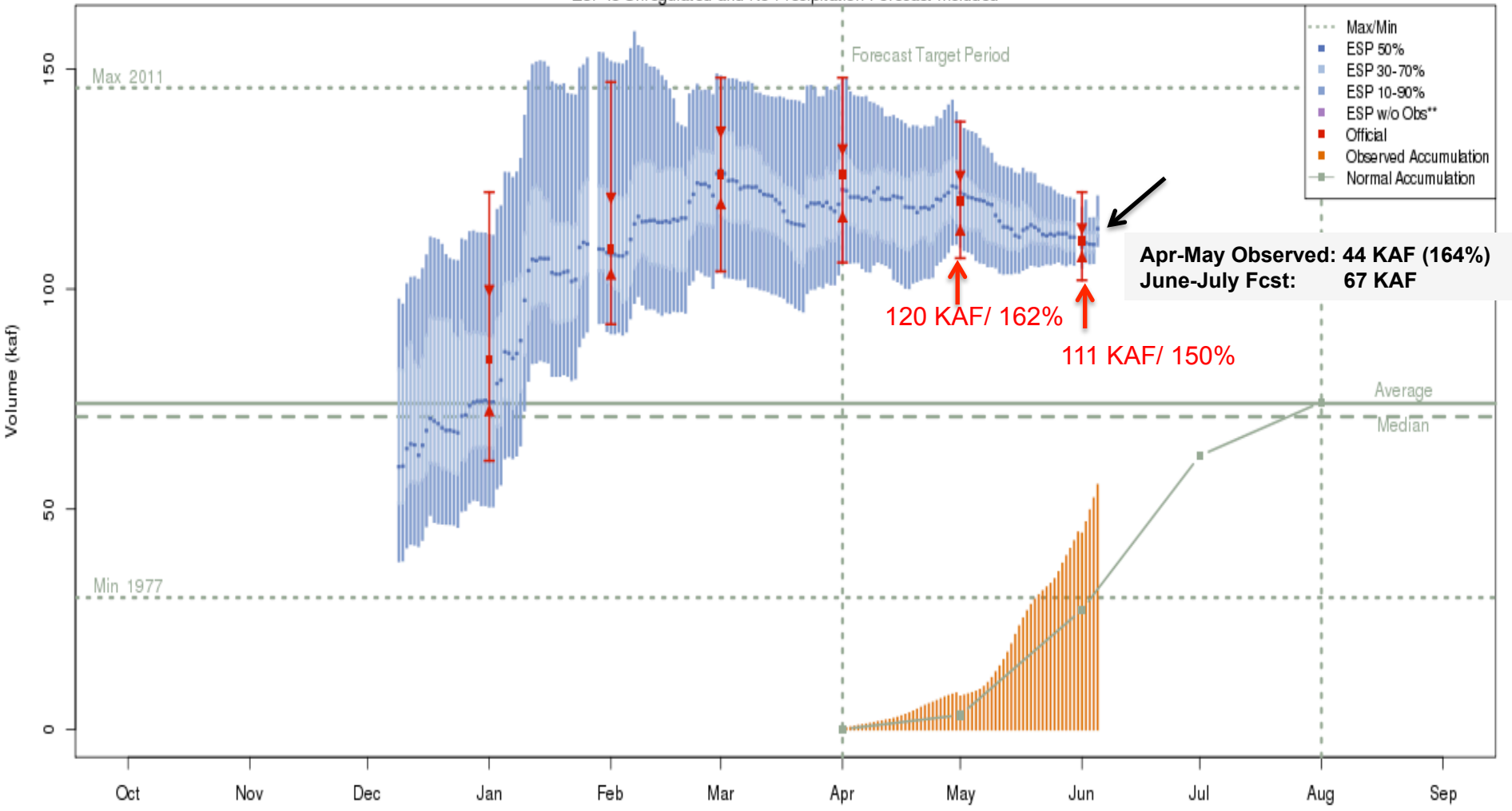
West Fork Duchesne - Vat Diversion- Blo (WFDU1)
 2017-06-01 Apr-Jul Official 50% Forecast: 34 kaf (183% of average)
 ESP is Unregulated and No Precipitation Forecast Included



The most recent (2017-06-05) full period 50% ESP forecast is 35 kaf.
 Plot Created 2017-06-06 06:54:07, NOAA / NWS / CBRFC
 Forecasts in the forecast target period include observed values.

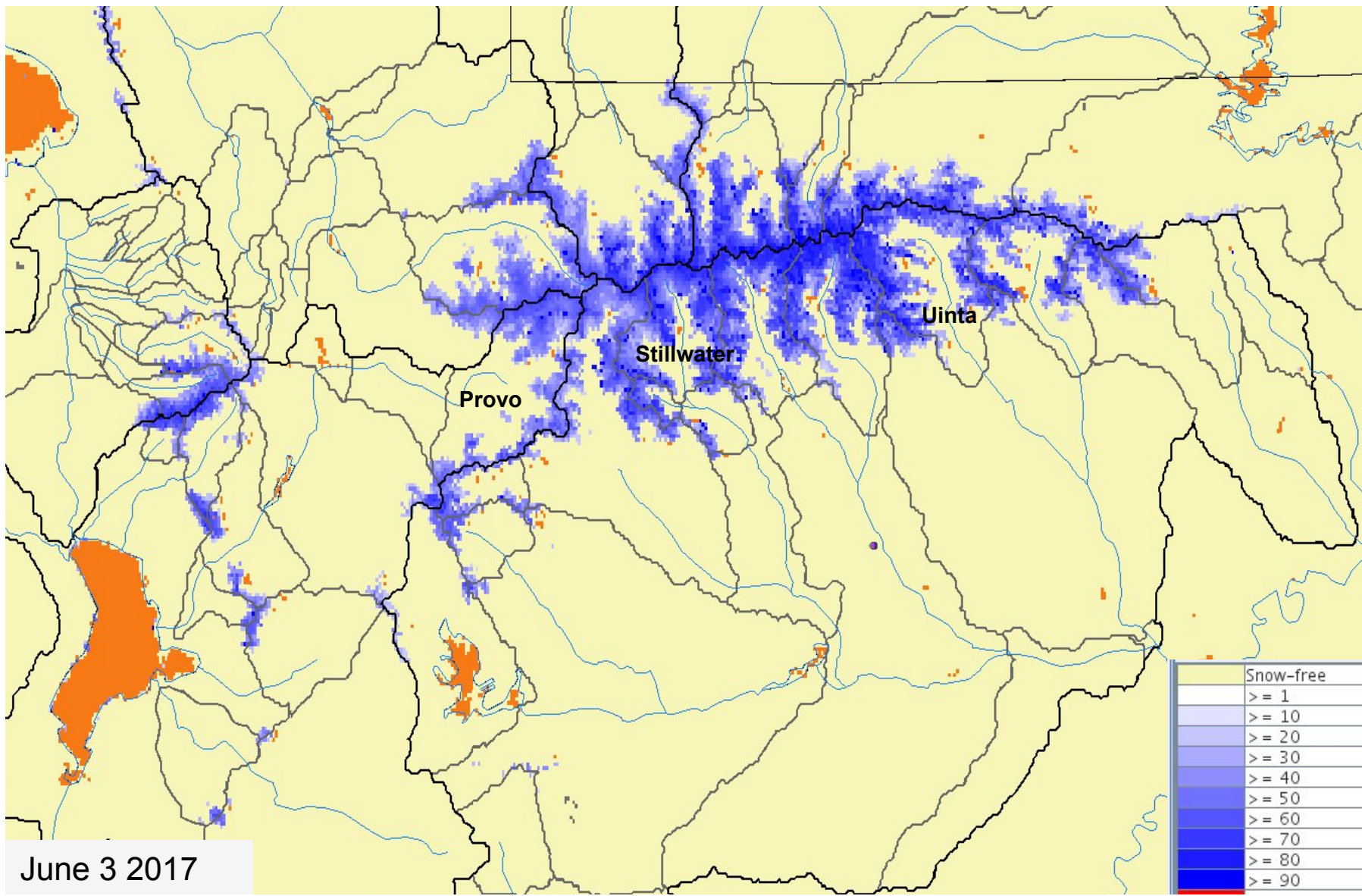
Forecasts: Upper Stillwater Reservoir

Rock Ck - Upper Stillwater Res (USTU1)
 2017-06-01 Apr-Jul Official 50% Forecast: 111 kaf (150% of average)
 ESP is Unregulated and No Precipitation Forecast Included



The most recent (2017-06-05) full period 50% ESP forecast is 114 kaf.
 Plot Created 2017-06-06 08:50:56, NOAA / NWS / CBRFC
 Forecasts in the forecast target period include observed values.

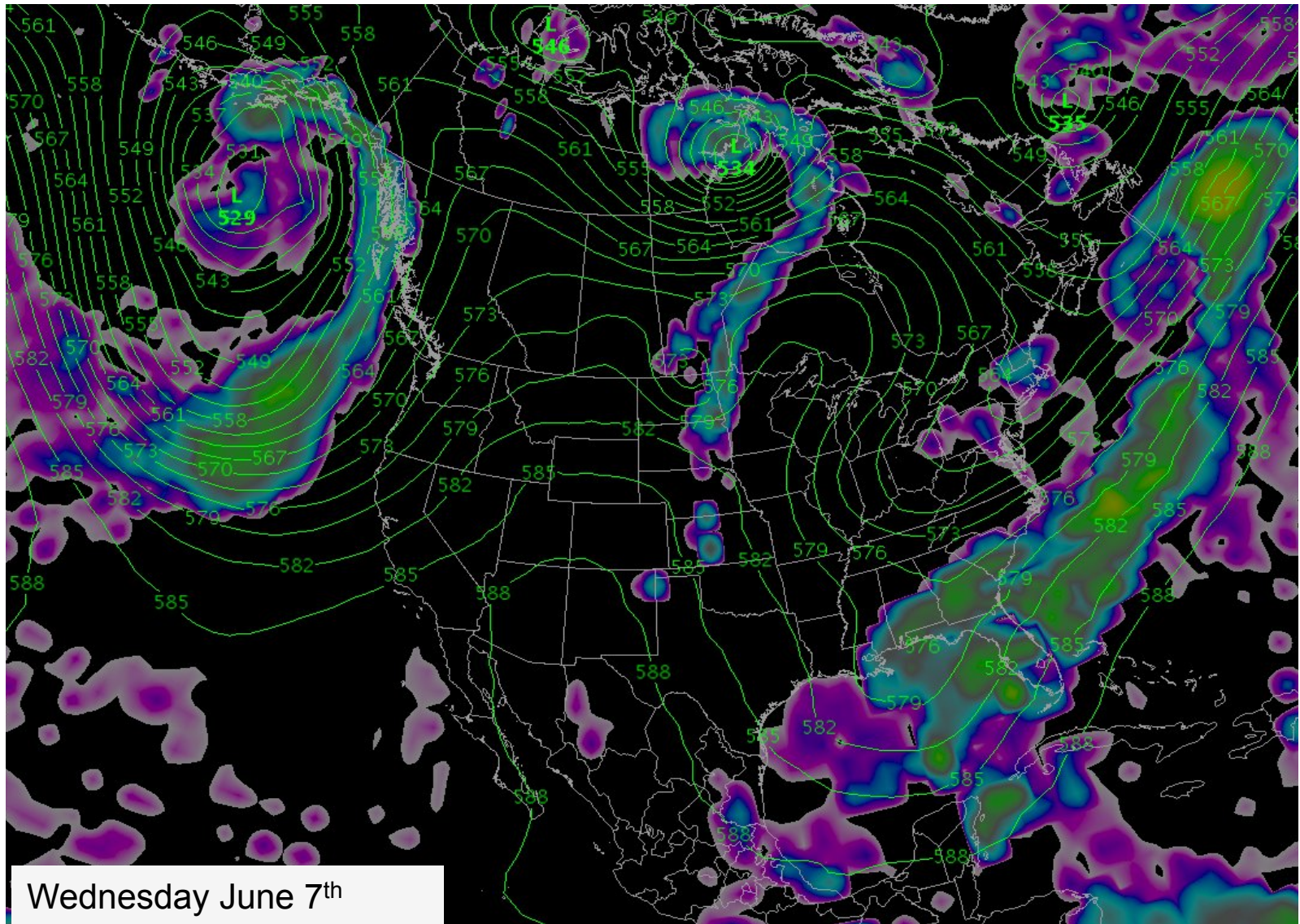
Currant Snow Conditions: Satellite Snow Covered Area



June 3 2017

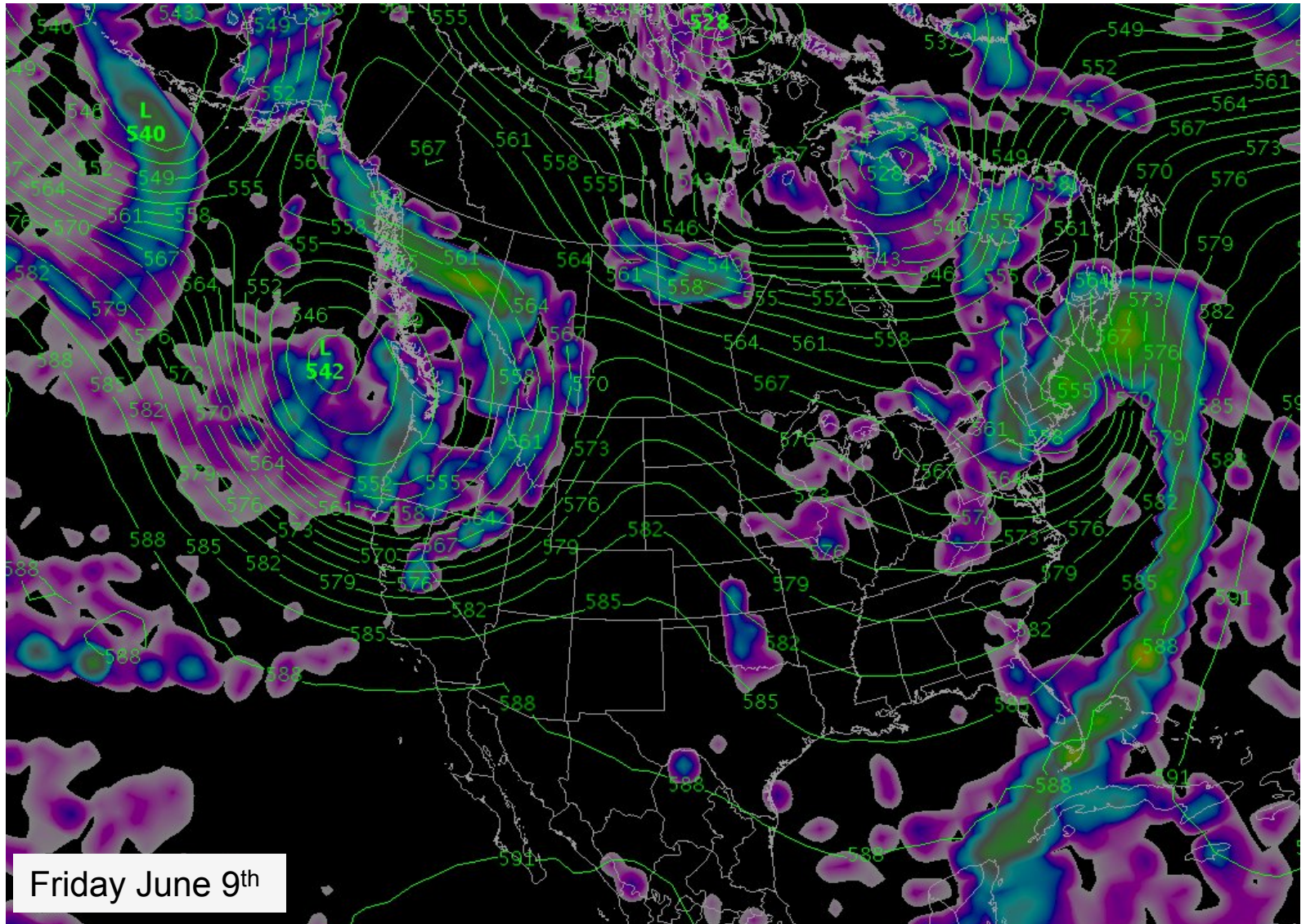
Upcoming Weather

Ridge of high pressure will maintain warm (above normal temperatures) and dry conditions through Friday.



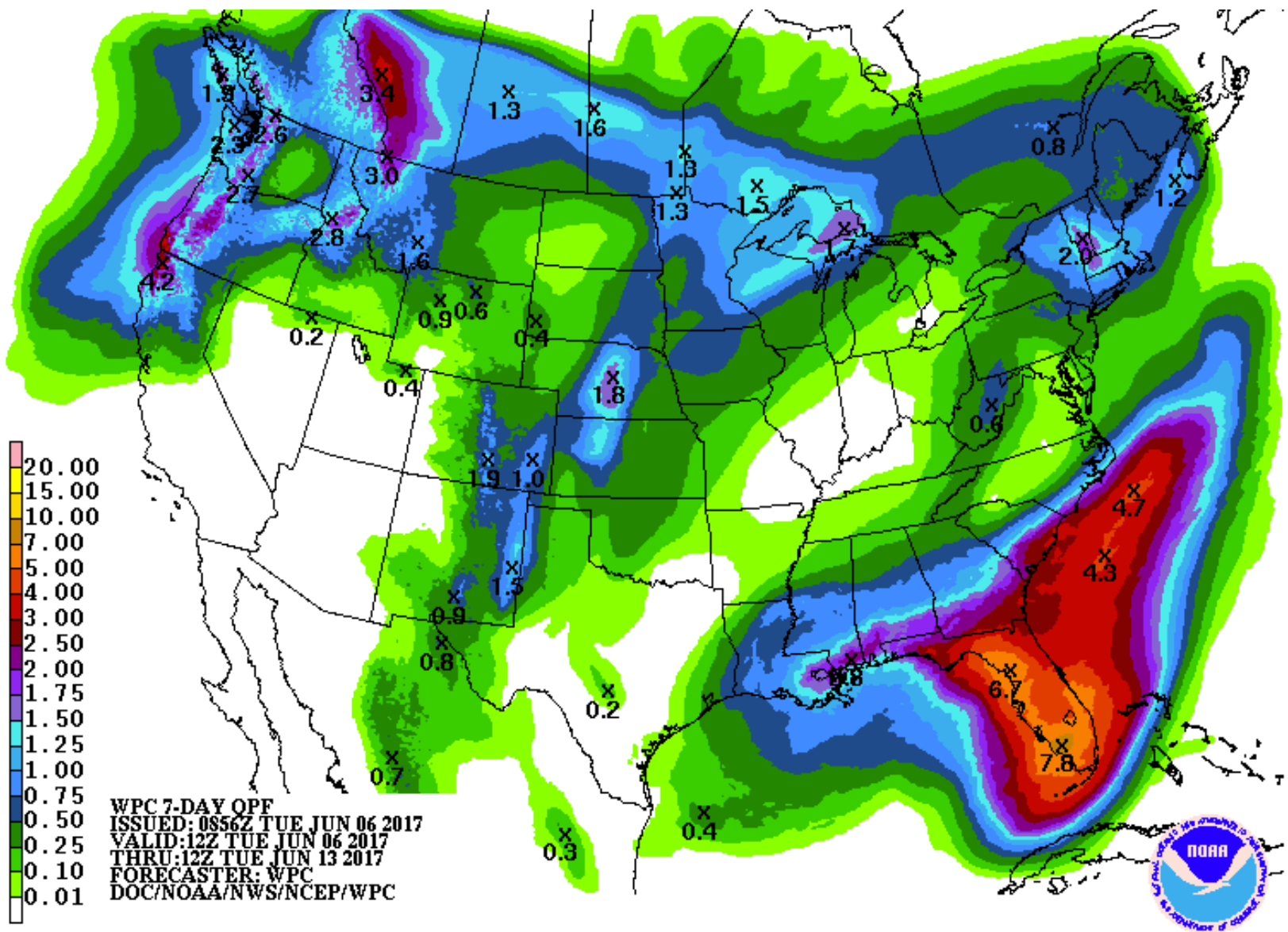
Upcoming Weather

A strong cold front will cross the region Friday followed by colder air (below normal temperatures) through early next week.



Upcoming Weather

Precipitation Forecast: 7 day total (June 6th - June 13th)



10-Day Deterministic Streamflow Forecasts



COLORADO BASIN RIVER FORECAST CENTER

NATIONAL WEATHER SERVICE / NATIONAL OCEANIC AND ATMOSPHERIC ADMINISTRATION

- HOME
- RIVERS
- SNOW
- WATER SUPPLY
- RESERVOIRS
- WEATHER
- CLIMATE
- HELP
- ABOUT
- NEWS
- SEARCH

News
Upcoming Webinars: [More Info...](#)
Check out the Upper Colorado Situational Awareness Page: [More Info...](#)

Conditions Map [Help](#)



Lat: 40.18 Lng: -110.33, Zoom: 9

- River Conditions
- Snow Conditions
- Water Supply Forecasts
- Peak Flood Probability
- Reservoir Conditions
- Daily Precipitation
- Monthly Precipitation
- Soil Moisture
- Map Options

Base Map | Boundaries | **Zoom Areas** | [Help](#)

- Entire CBRFC
- Upper Colorado**
 - Col abv Kremmling
 - Eagle-Roaring Fork
 - Gunnison
 - Dolores
 - Lake Powell
- Green**
 - Upper Green
 - White-Yampa
 - Duchesne-Price
 - San Rafael-Dirty Devil
- San Juan**
 - San Juan
- Great**
 - Bear
 - Weber
 - Six Creeks-Jordan
 - Provo-Utah Lake
 - Salt Lake
- Sevier**

Flow you would expect to see in the river. Updated every morning by 10 am.

Forecasts include:

5 days of forecasted precip

10 days of forecasted temperatures

Sources of Errors/Inconsistency:

Model snow states

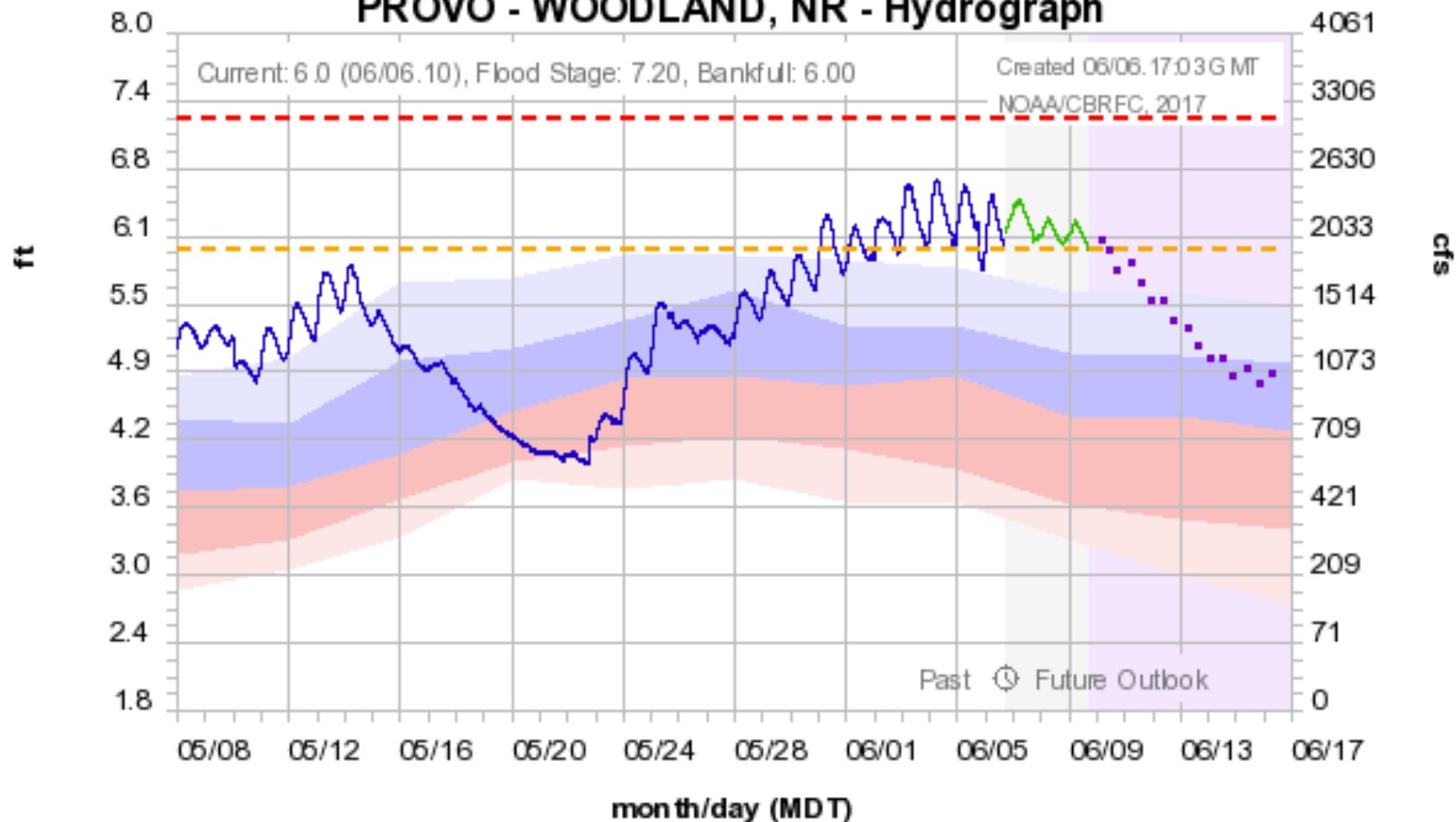
Consistency of meteorological models

Future weather

Assumptions about regulation/ diversions

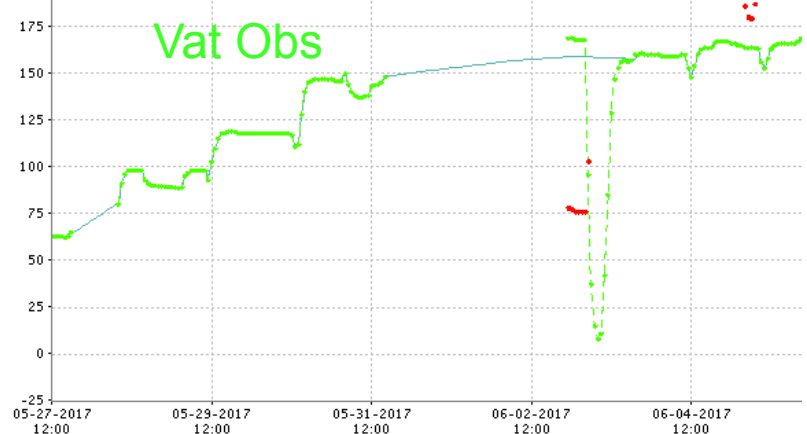
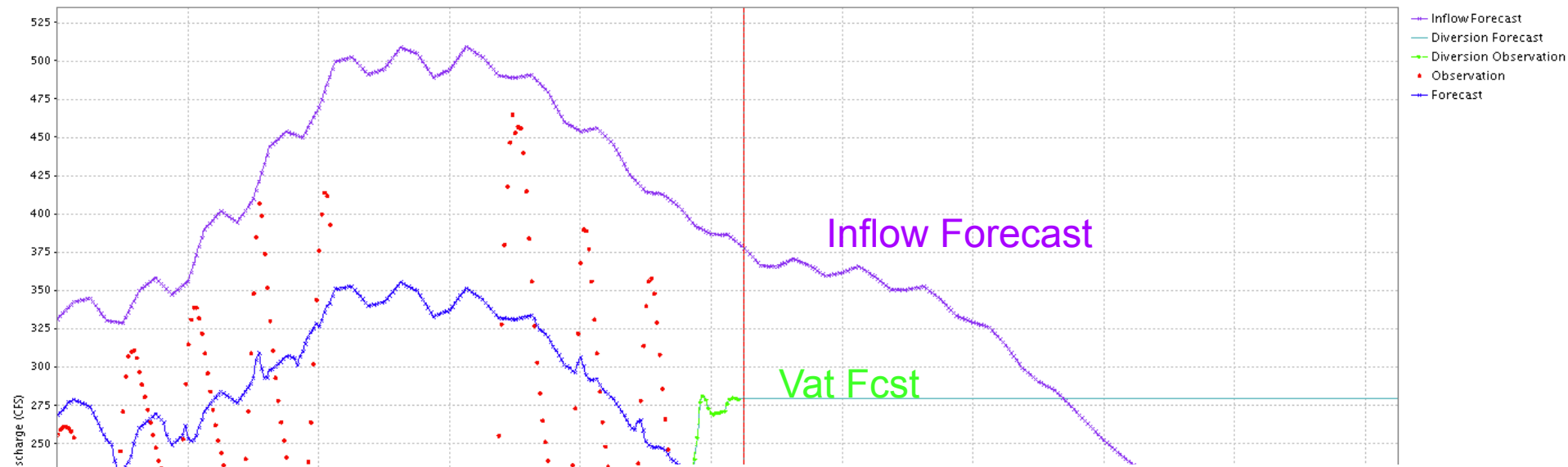
Provo River near Woodland

Colorado Basin River Forecast Center PROVO - WOODLAND, NR - Hydrograph



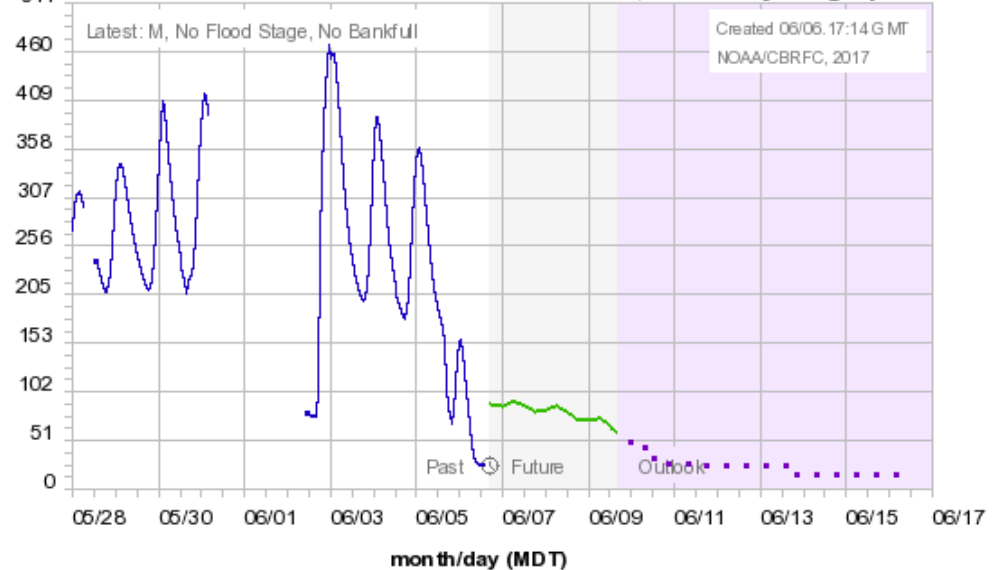
*Assuming Duchesne Tunnel will stay around ~165 cfs

West Fork Duchesne River



Colorado Basin River Forecast Center

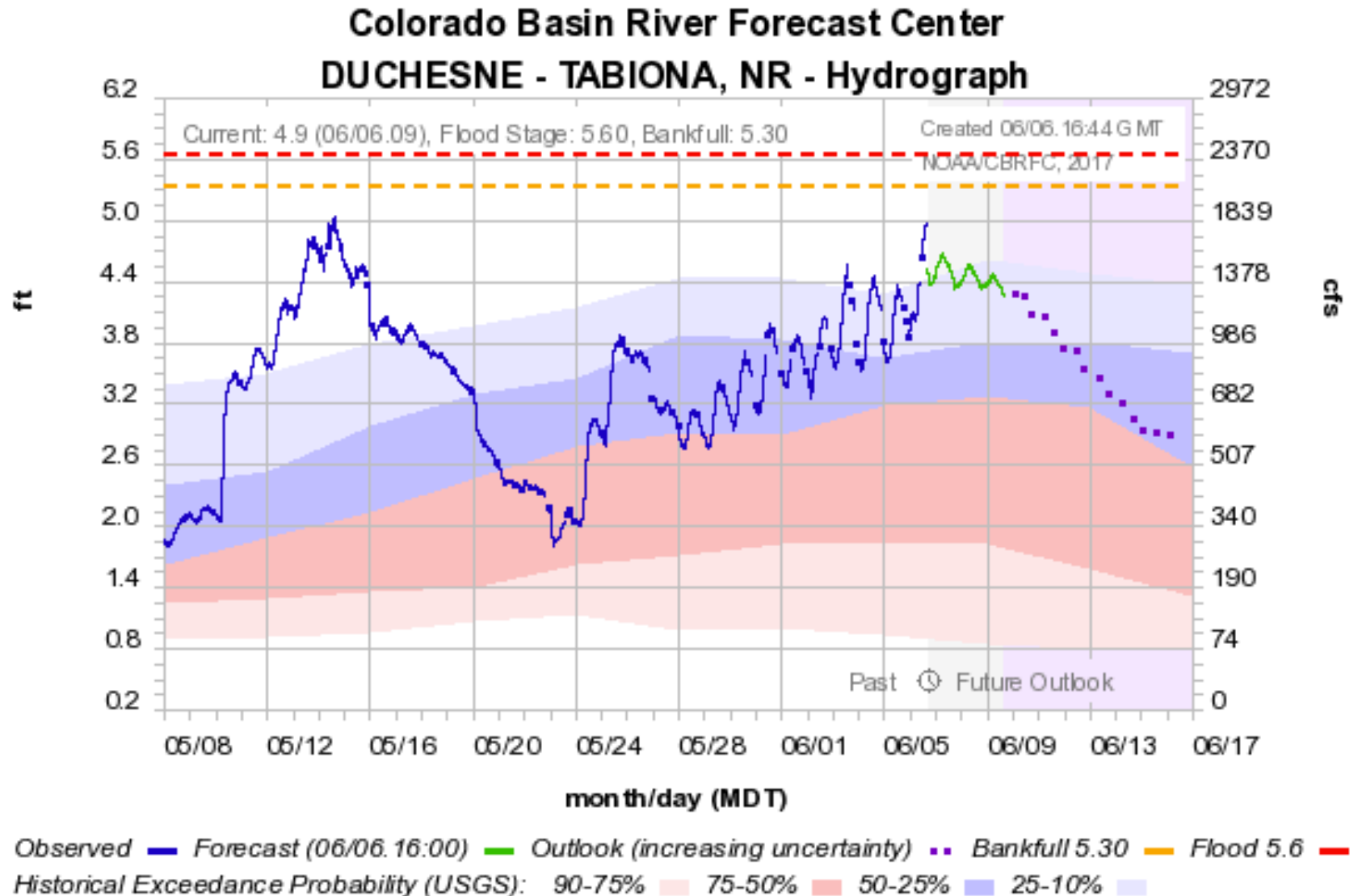
WEST FORK DUCHESNE - VAT DIVERSION, BLO - Hydrograph



Observed — Forecast (06/06. 16:00) — Outlook (increasing uncertainty) ••

Historical Exceedance Probability (USGS): 90-75% 75-50% 50-25% 25-10%

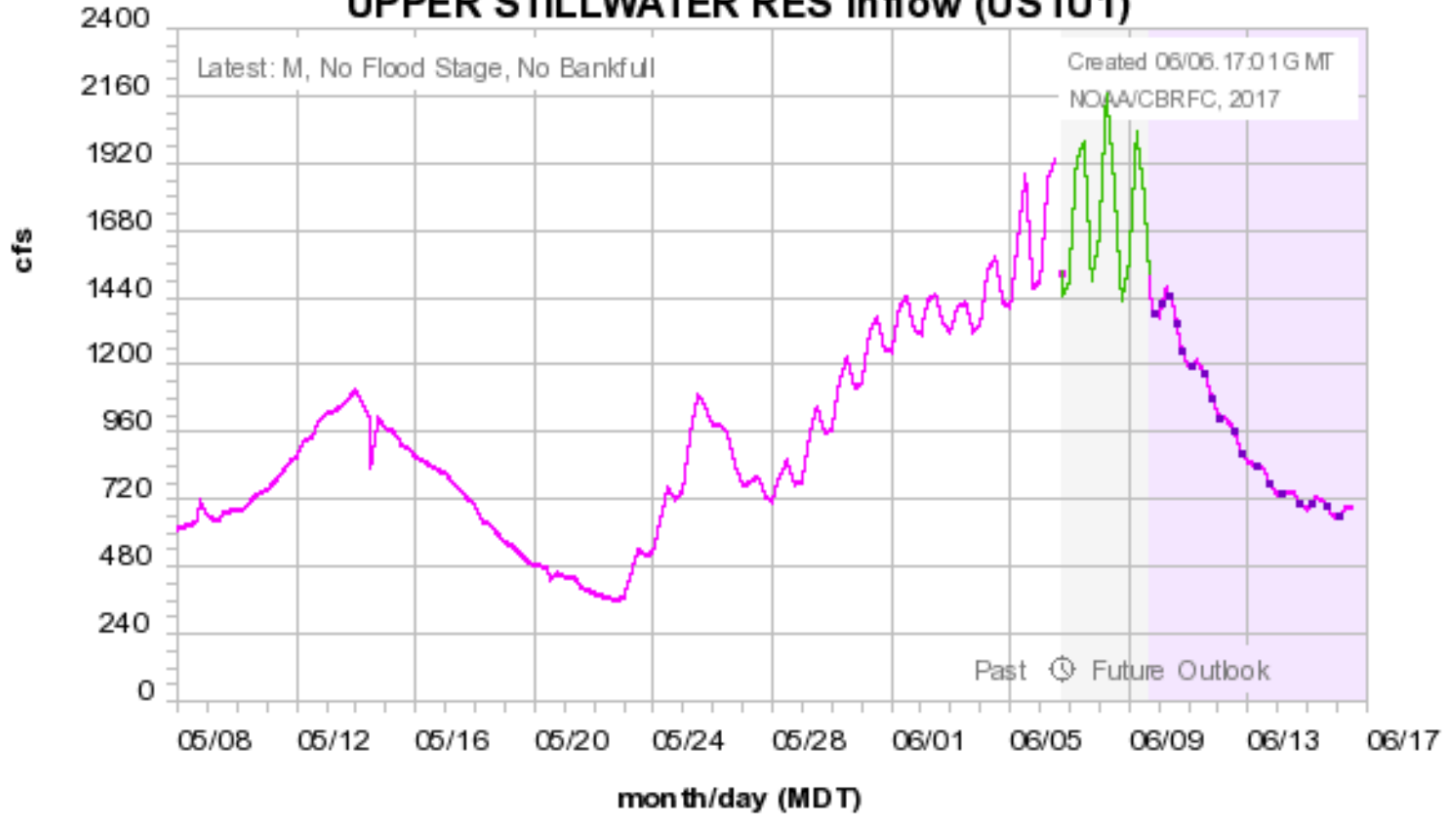
Duchesne River nr Tabiona



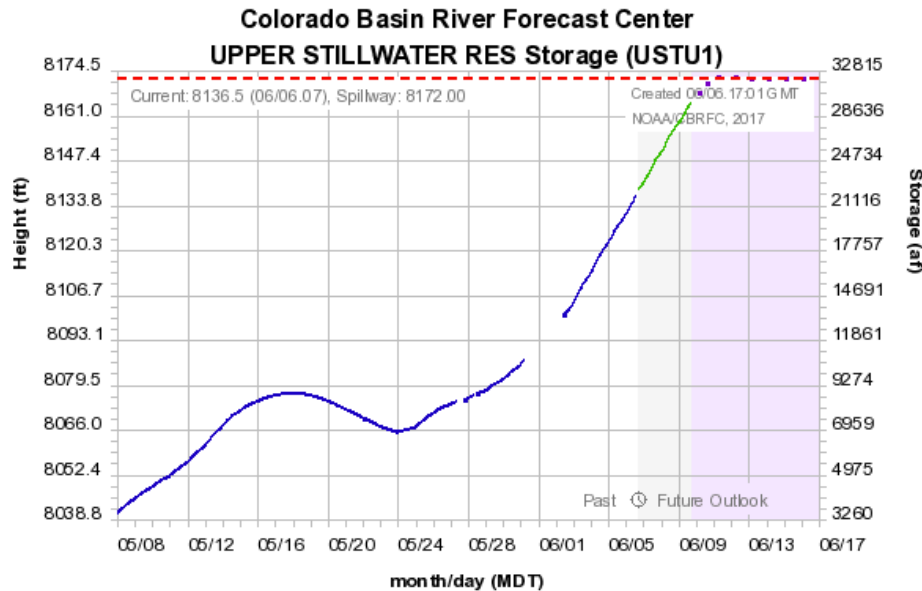
Assuming Duchesne Tunnel will stay around ~165 cfs

Upper Stillwater Inflow

Colorado Basin River Forecast Center UPPER STILLWATER RES Inflow (USTU1)

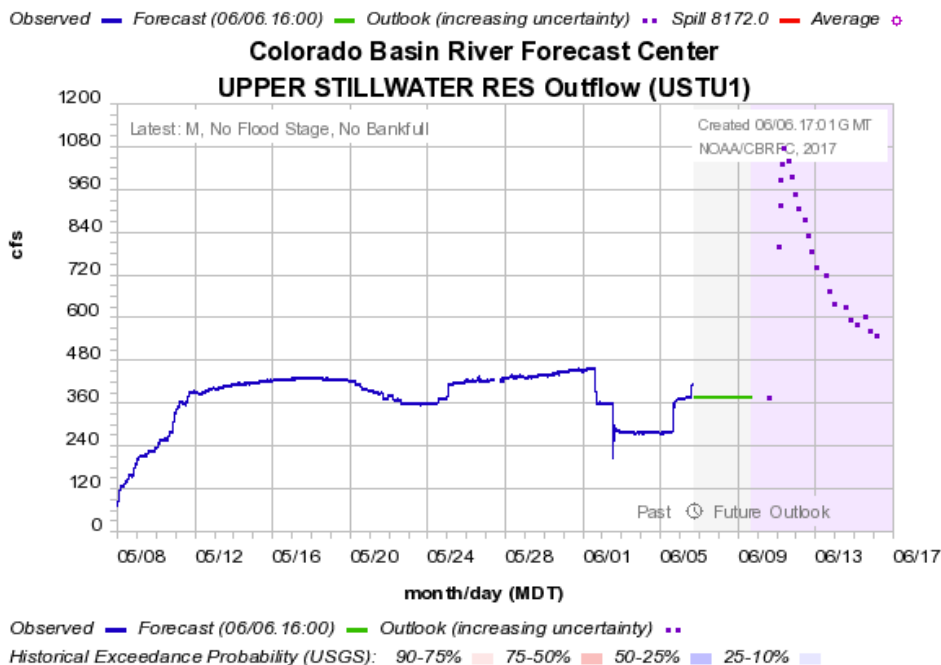


Upper Stillwater Pool Elevation/Outflow



Assuming the following:
 Stillwater Tunnel = ~165 cfs
 Outflow = 375 cfs

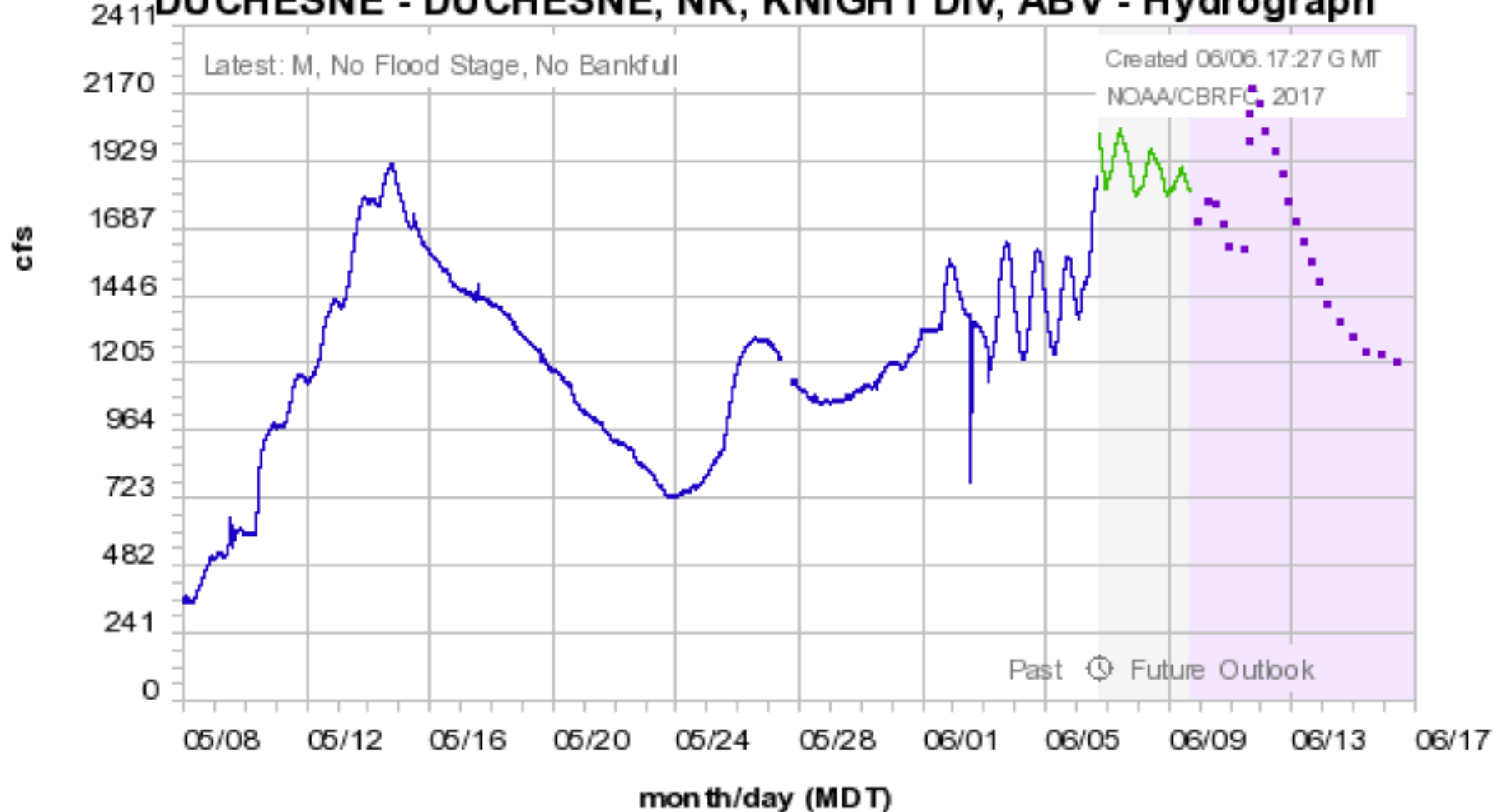
Spill ~ 6/10



Duchesne River above Knights Diversion

Colorado Basin River Forecast Center

DUCHESNE - DUCHESNE, NR, KNIGHT DIV, ABV - Hydrograph



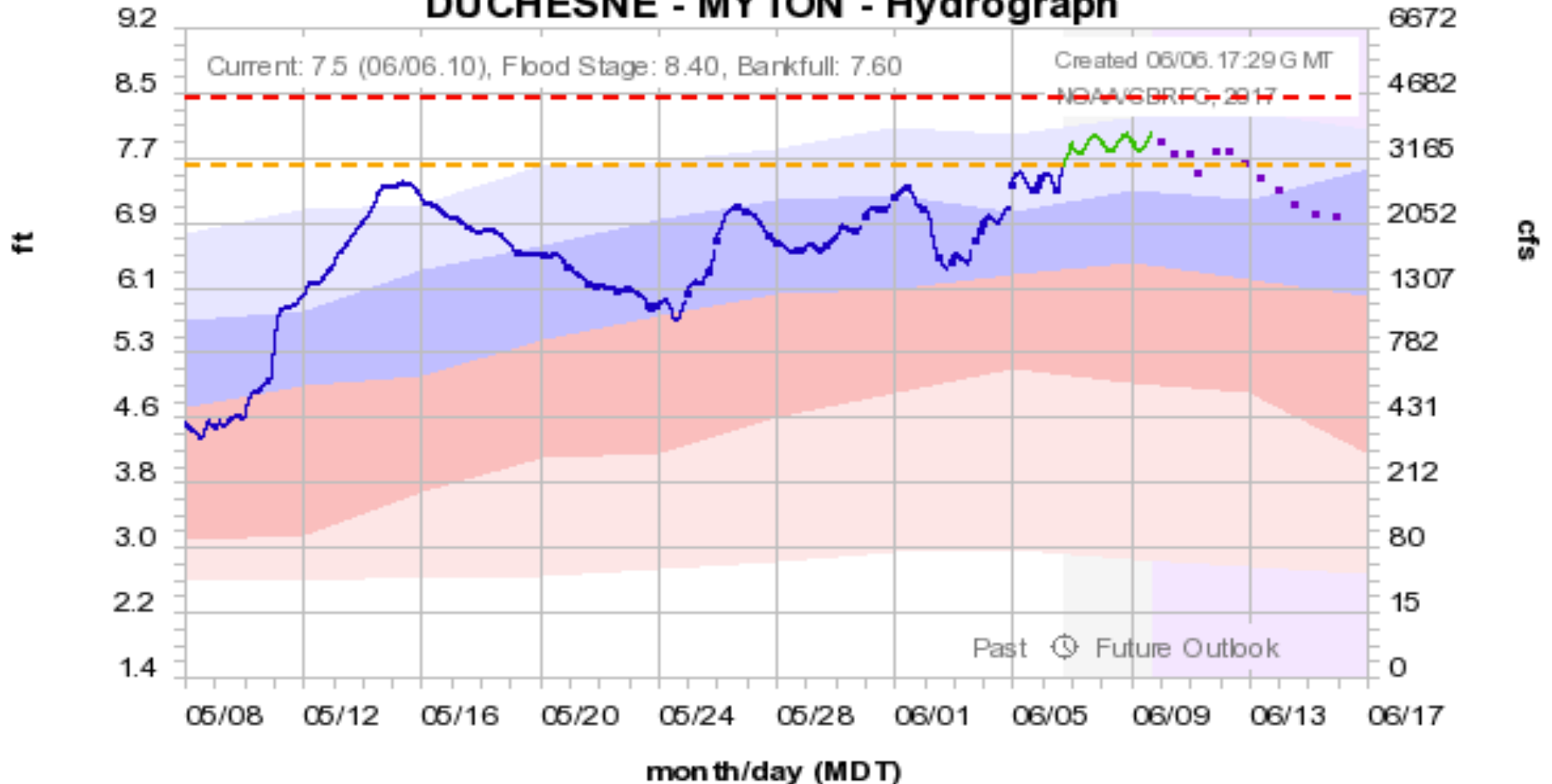
Observed — Forecast (06/06. 16:00) — Outlook (increasing uncertainty) - -

Historical Exceedance Probability (USGS): 90-75% 75-50% 50-25% 25-10%

Duchesne River - Myton

Colorado Basin River Forecast Center

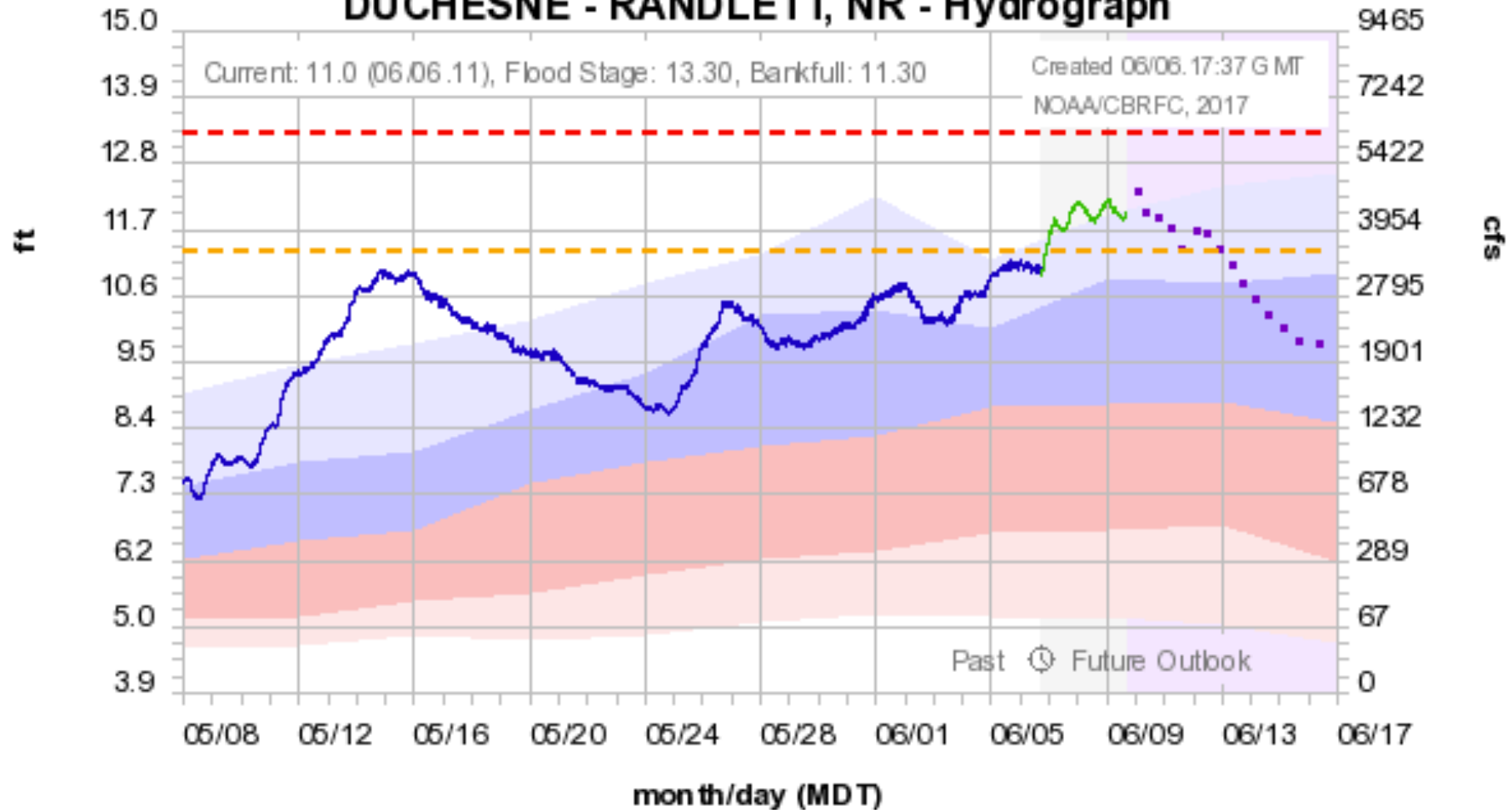
DUCHESNE - MYTON - Hydrograph



Assuming: Starvation Release 250 cfs, ~650 cfs diversions (Knights, Grey Mtn, Duchesene Feeder, Myton Townsite), ~600-700 cfs other uses.

Duchesne River - Randlett

Colorado Basin River Forecast Center DUCHESNE - RANDLETT, NR - Hydrograph



Observed **—** Forecast (06/06.16:00) **—** Outlook (increasing uncertainty) **—** Bankfull 11.30 **—**
Flood 13.3 **—**

Historical Exceedance Probability (USGS): 90-75% **—** 75-50% **—** 50-25% **—** 25-10% **—**

Discussion

Forecast Discussion

Operations Discussion?

Thanks for the updates and data!