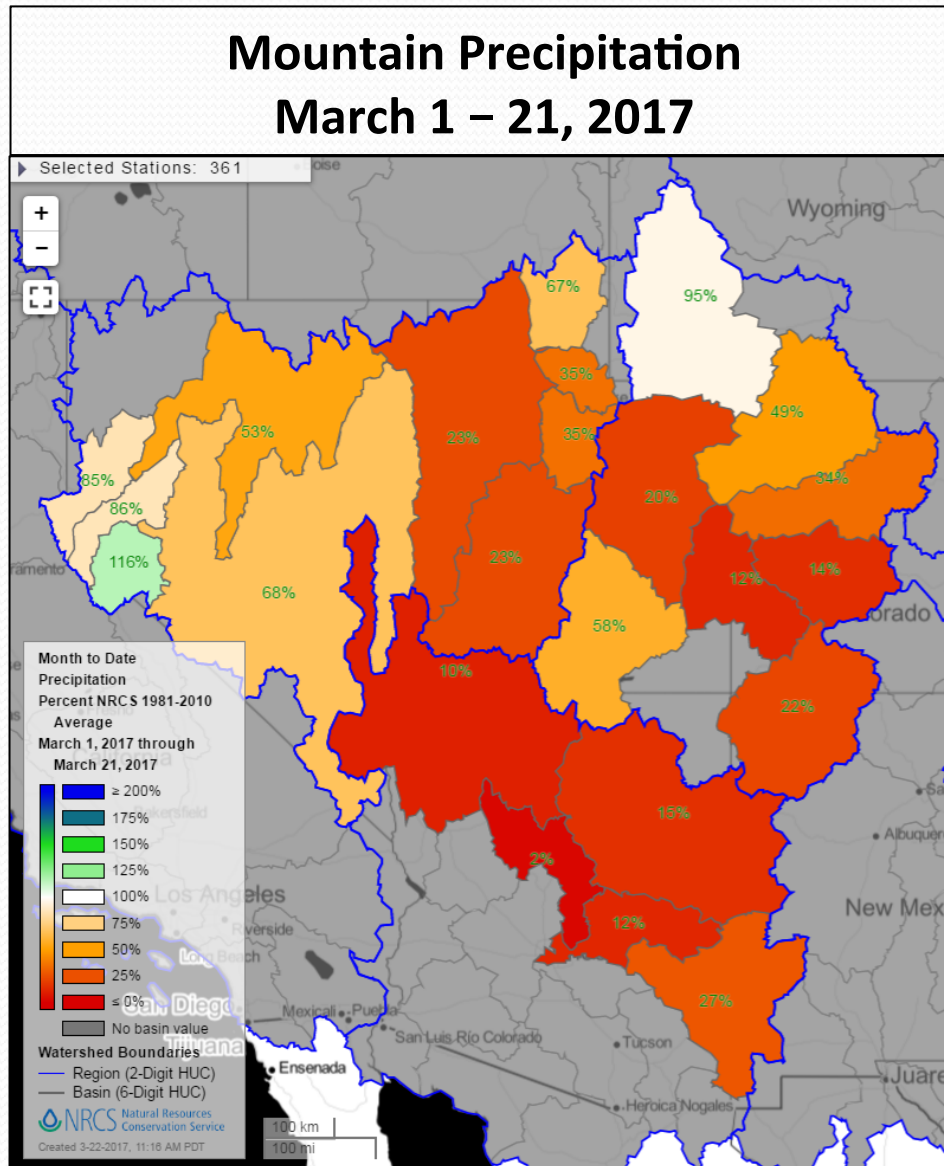


# Current Conditions and Forecasts

NRCS / CBRFC

CRFS March 23, 2017

# March Precipitation



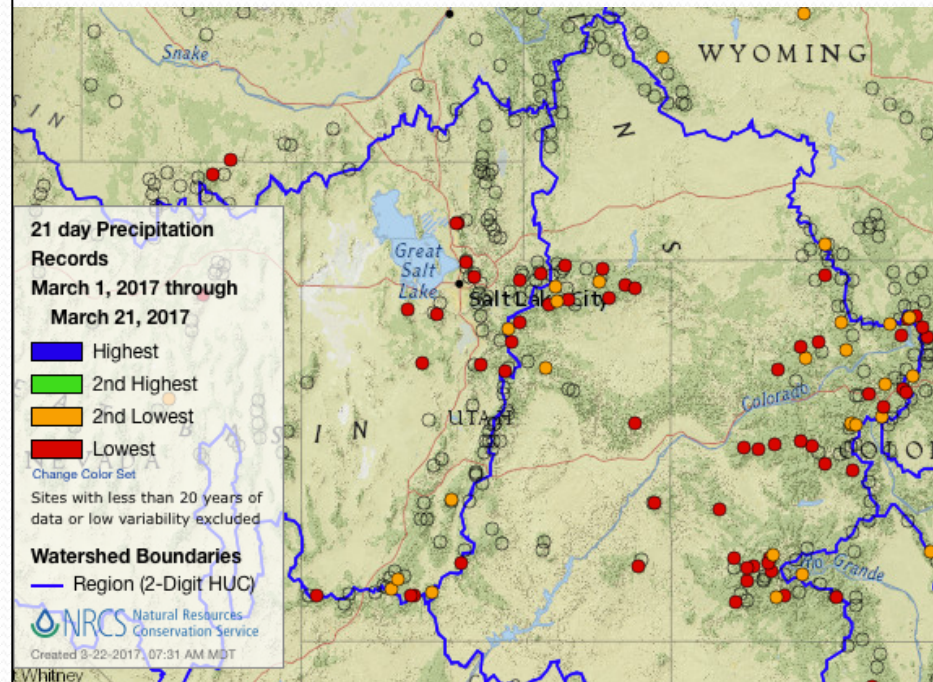
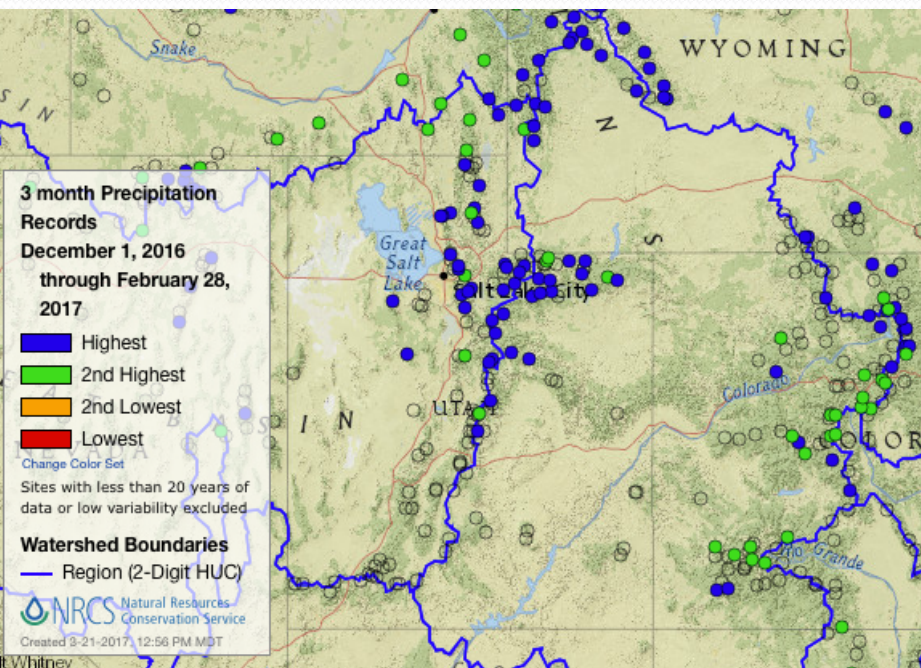
# Precipitation Extremes

## Dec – Feb SNOTEL Precipitation

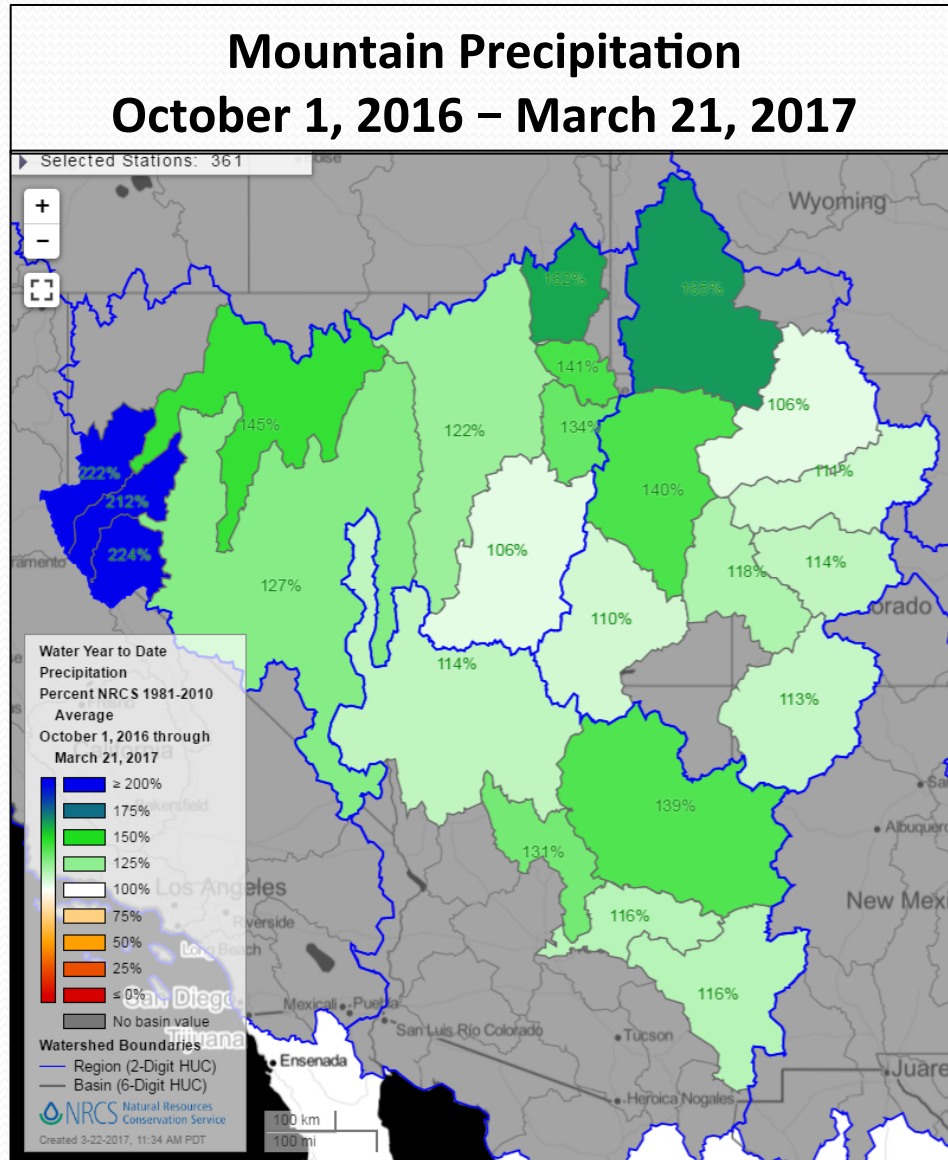
Many Record High Amounts  
(Especially the Upper Green)

## Mar 1 – 21 SNOTEL Precipitation

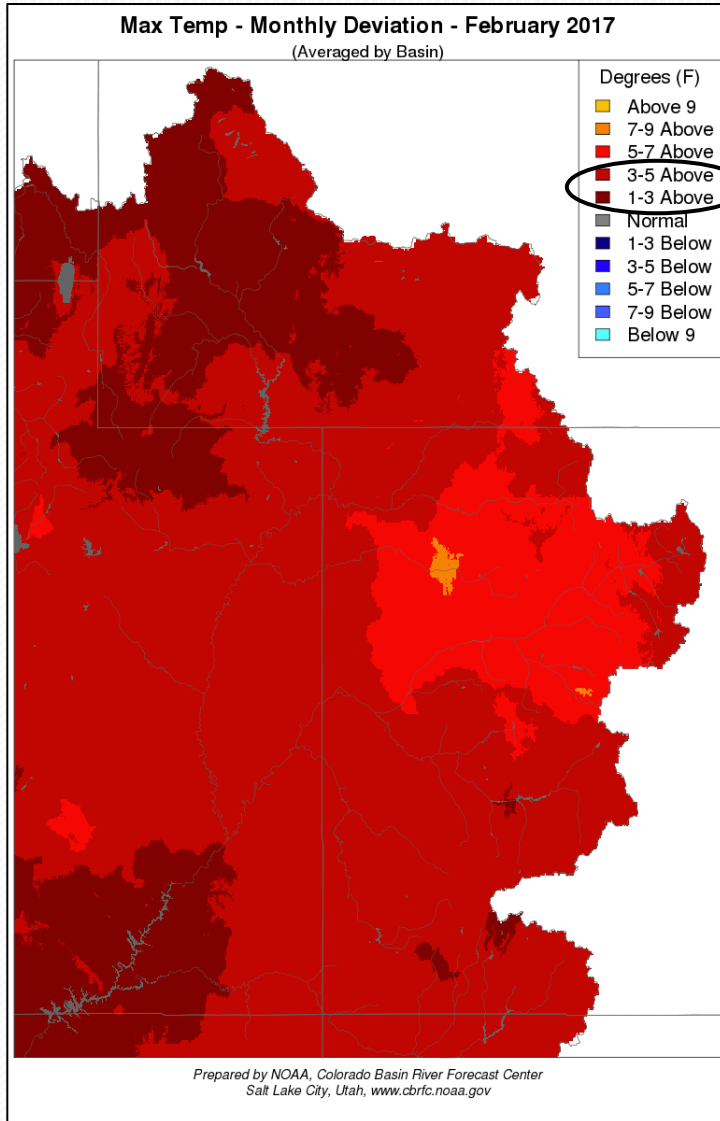
Many Record Low Amounts  
(Except the Upper Green)



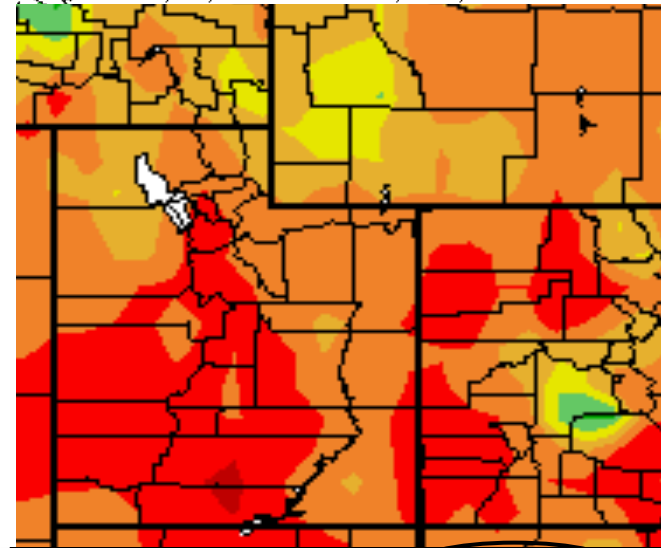
# Water Year Precipitation



# Temperature

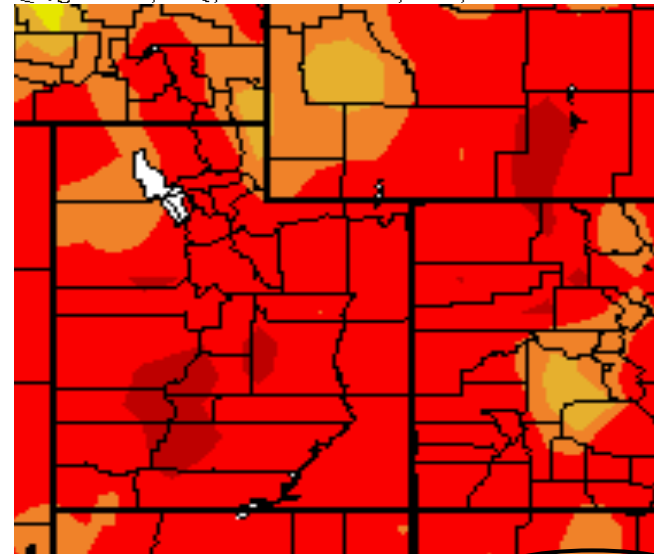


Av. Max. Temperature dep from Ave (deg F)  
3/1/2017 - 3/20/2017



Generated 3/21/2017 at WRCC using provisional data.  
NOAA Regional Climate Centers

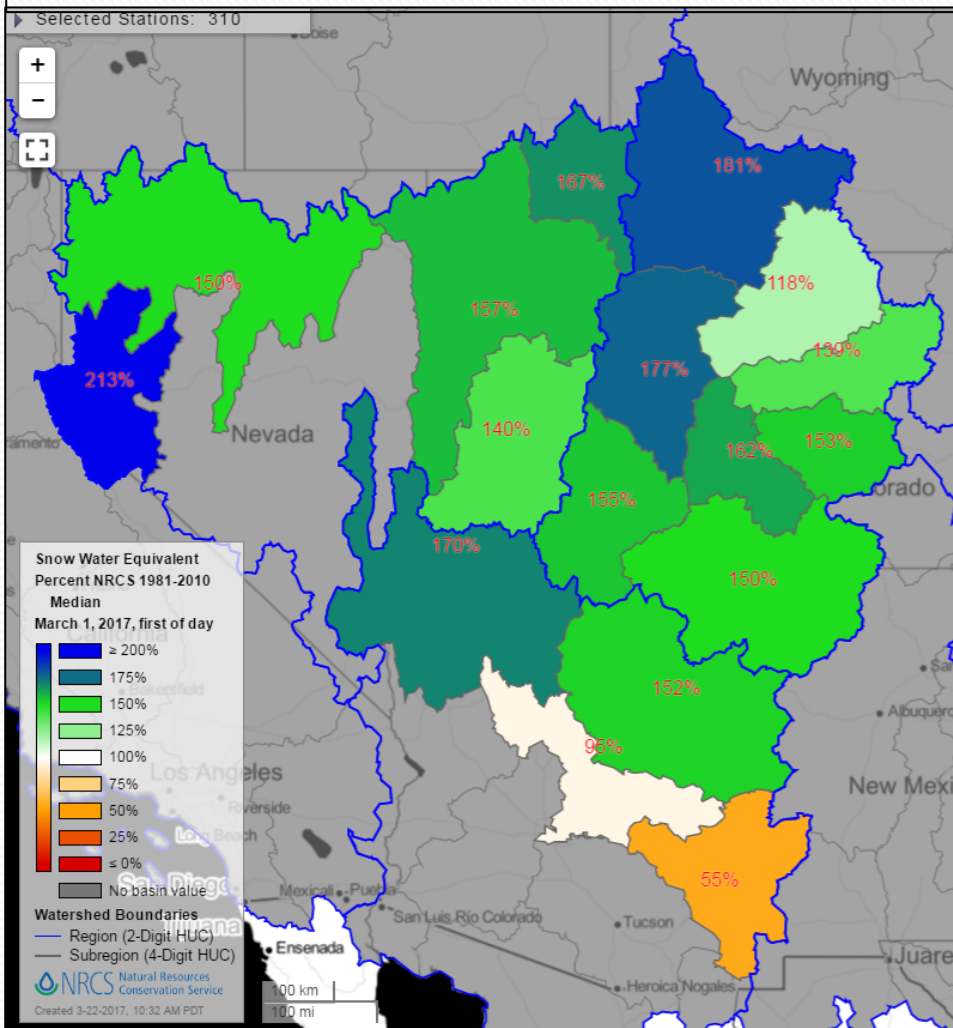
Av. Max. Temperature dep from Ave (deg F)  
3/14/2017 - 3/20/2017



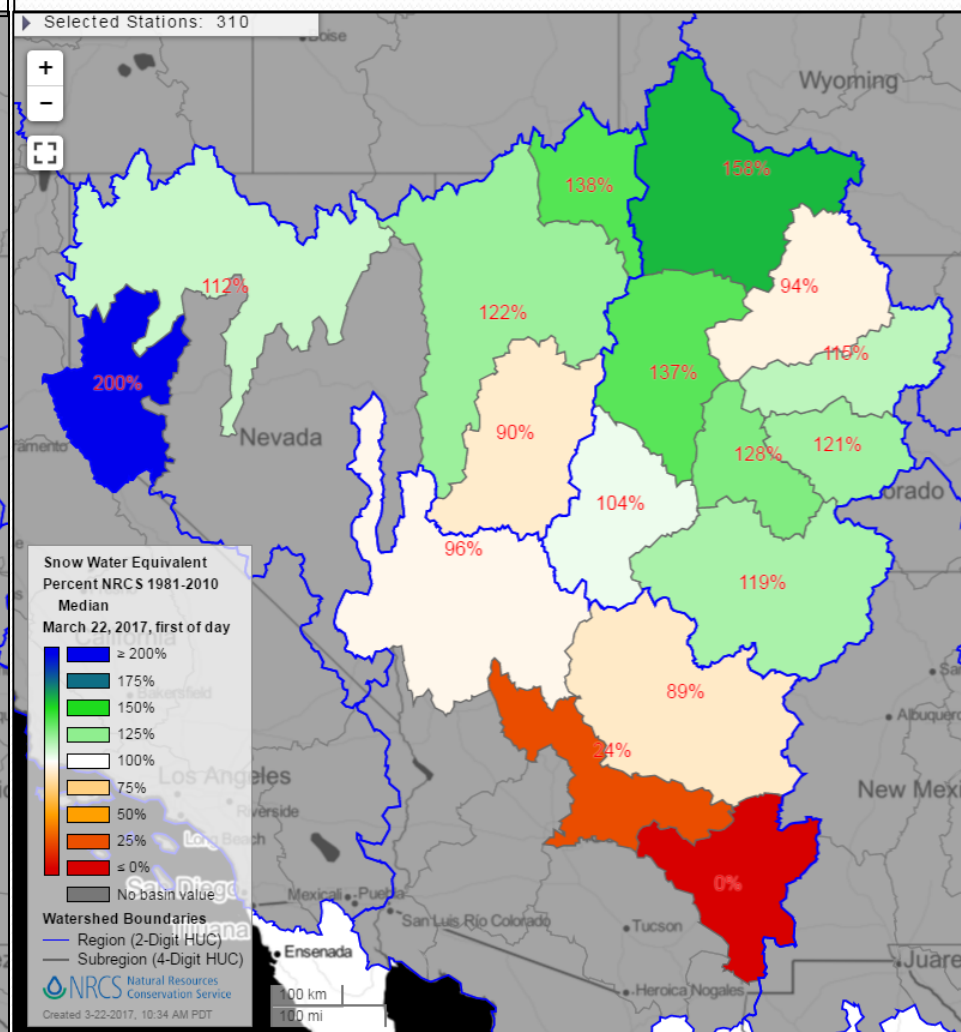
Generated 3/21/2017 at WRCC using provisional data.  
NOAA Regional Climate Centers

# Mountain Snowpack Conditions (% Median)

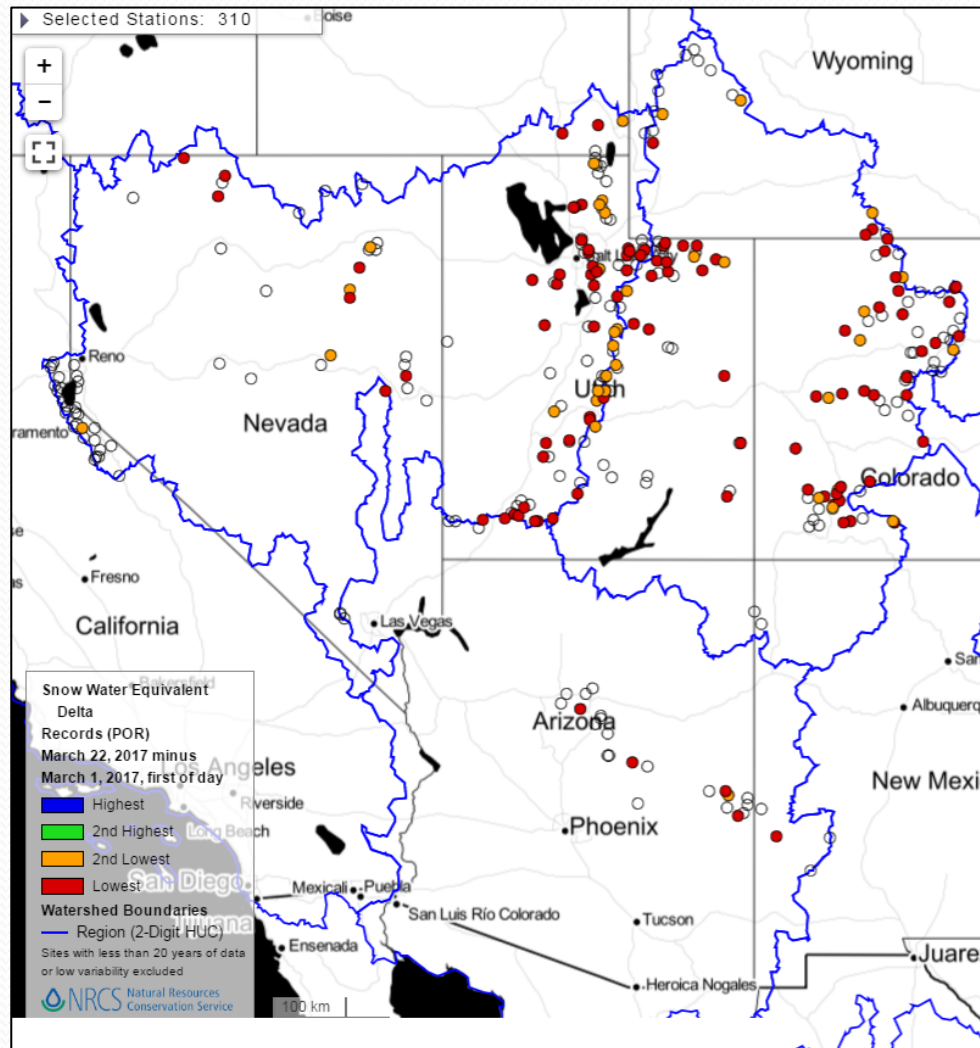
March 1, 2017



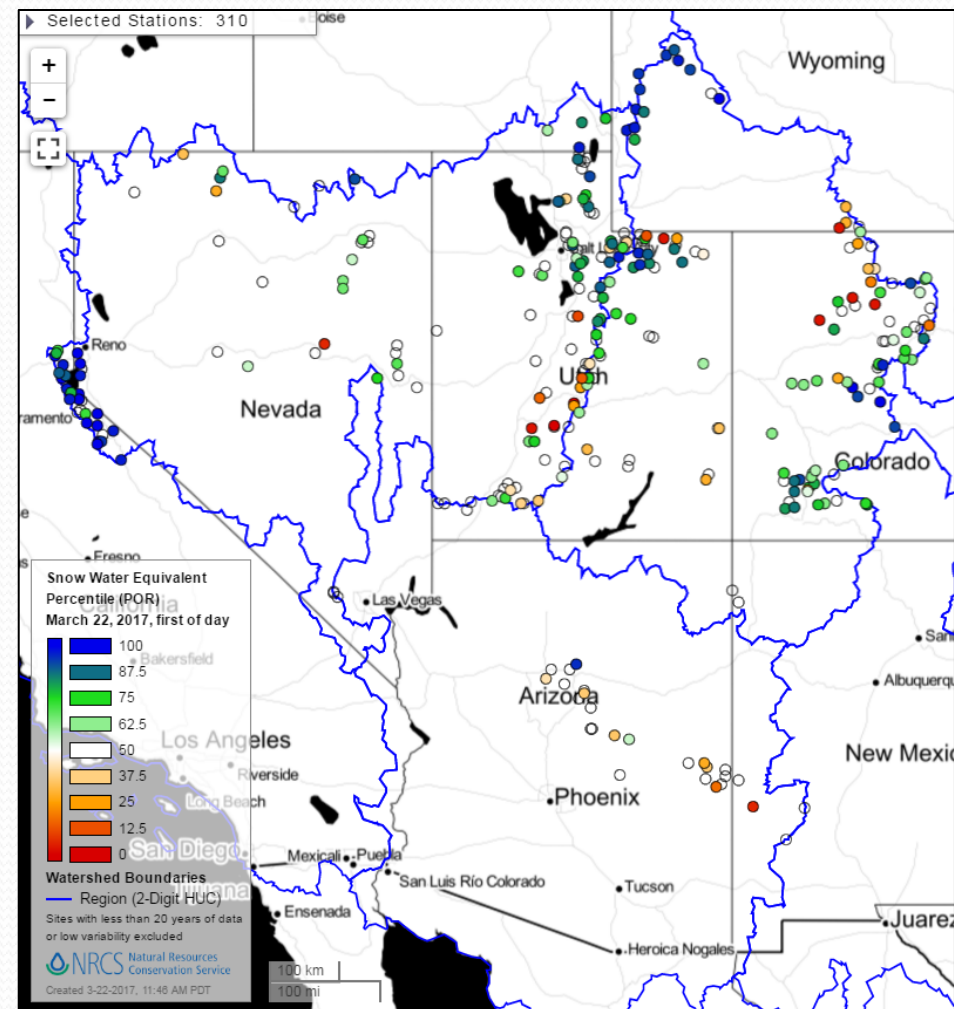
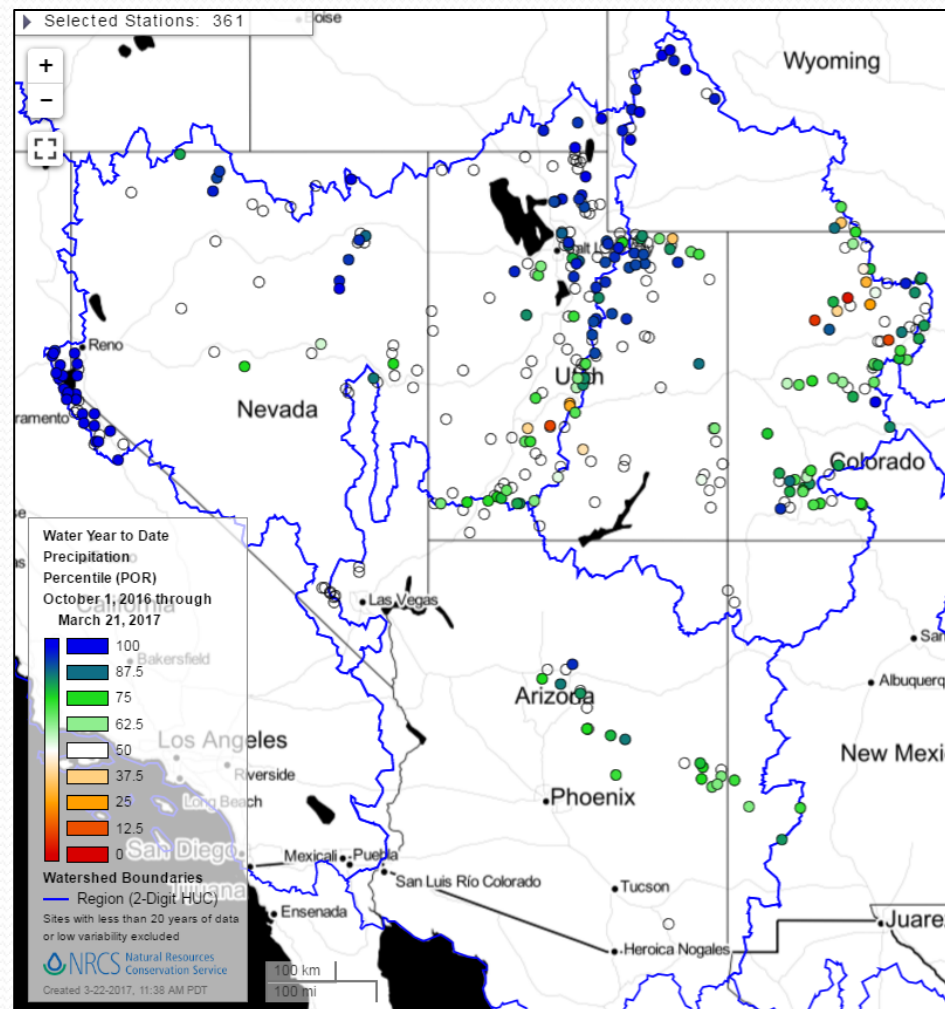
March 22, 2017



# March Snow Water Equivalent Delta Records

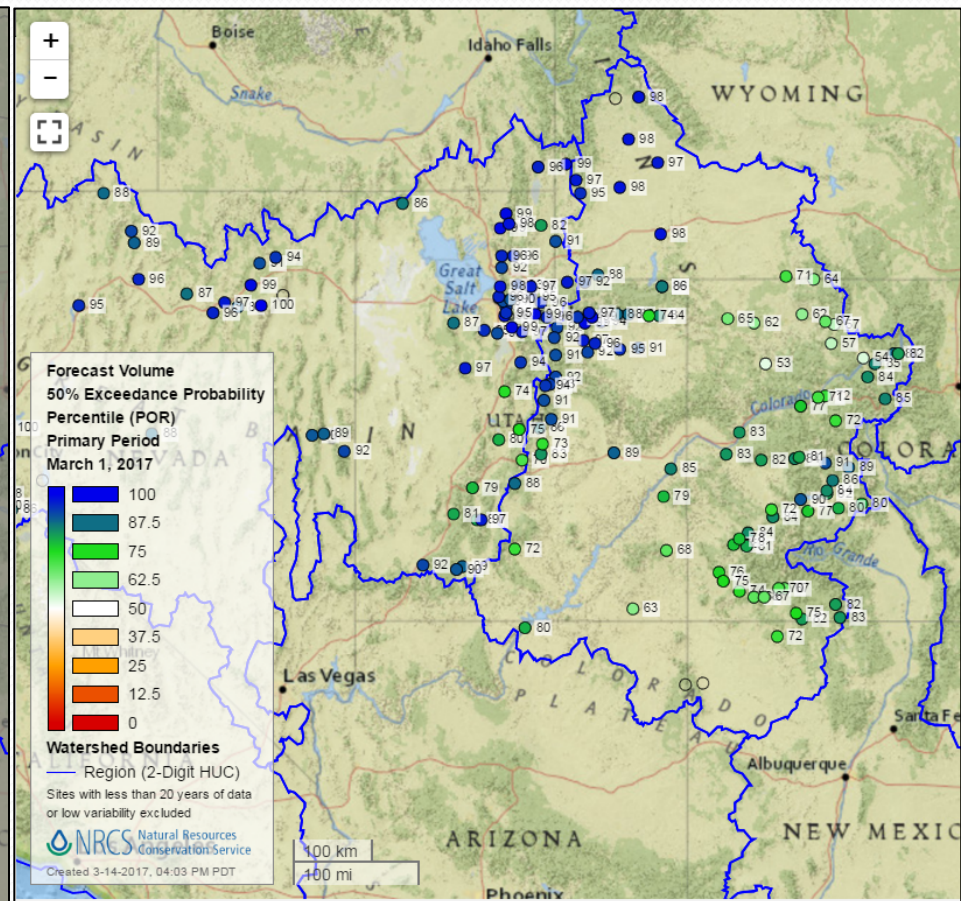
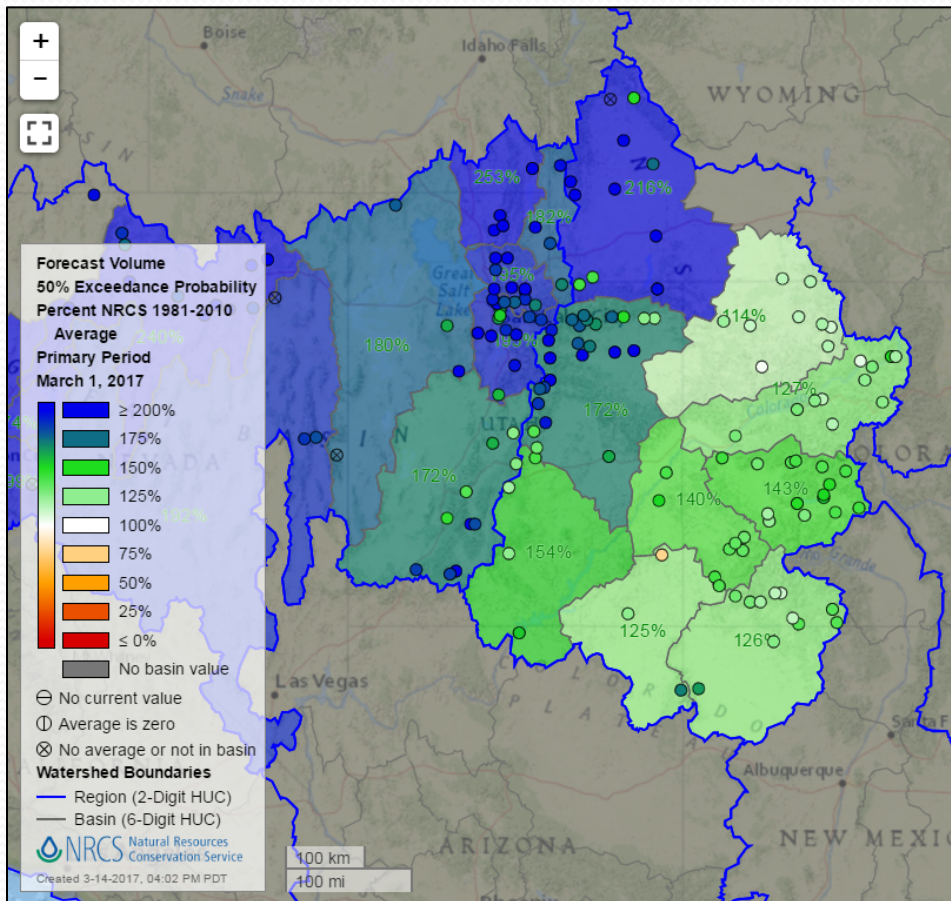


# Mountain Water Year Precipitation and Snow Water Equivalent March 21 Percentiles





# NRCS April-July March 1, 2017 Forecasts



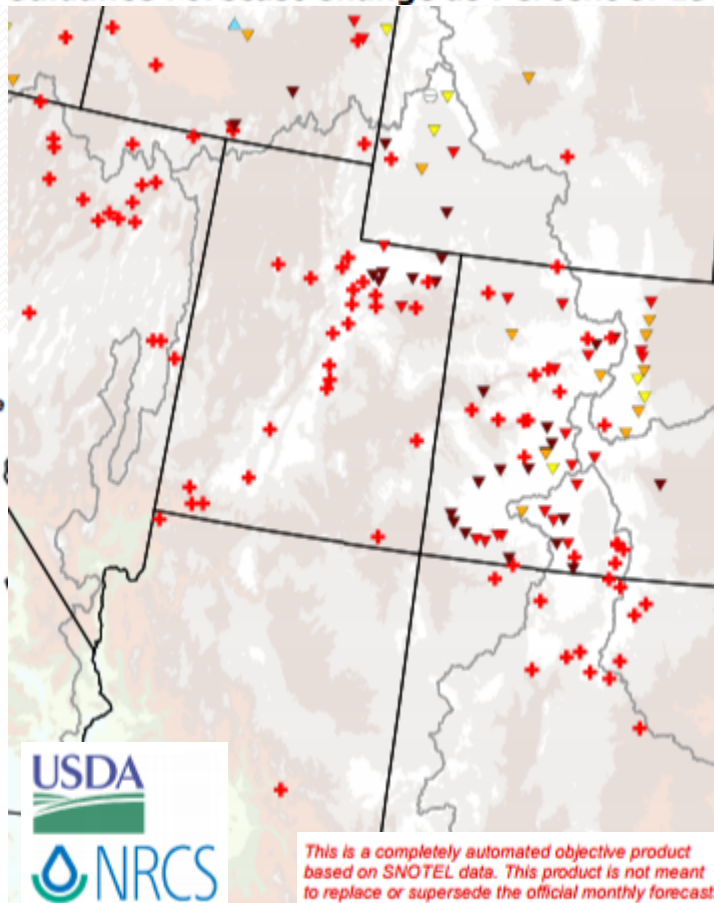
# NRCS Month to Date Change in Forecast Guidance

Month to Date Guidance Forecast Change as Percent of 1981-2010 Normal

Mar 22, 2017

Month-to-Date  
Guidance  
Forecast Change  
(% normal)

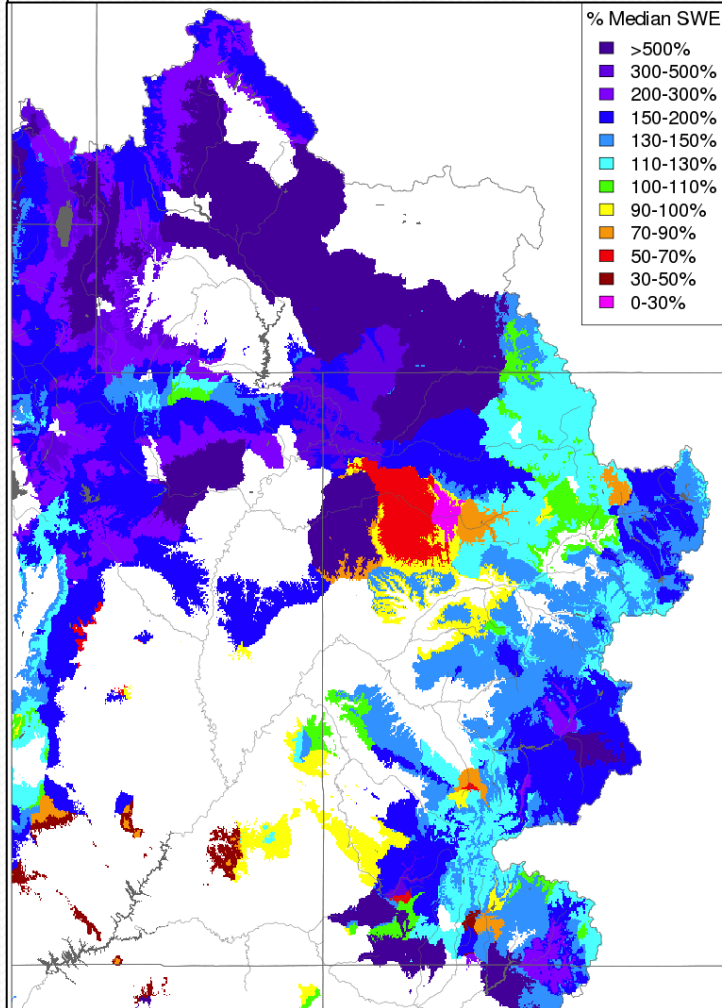
- ✕ > 20% gain
- ▲ 16 - 20%
- ▲ 11 - 15%
- ▲ 6 - 10%
- ▲ 1 - 5%
- ⊖ no change
- ▼ -5 - -1%
- ▼ -10 - -6%
- ▼ -15 - -11%
- ▼ -20 - -16%
- ✕ > 20% loss
- ⊖ Unavailable\*



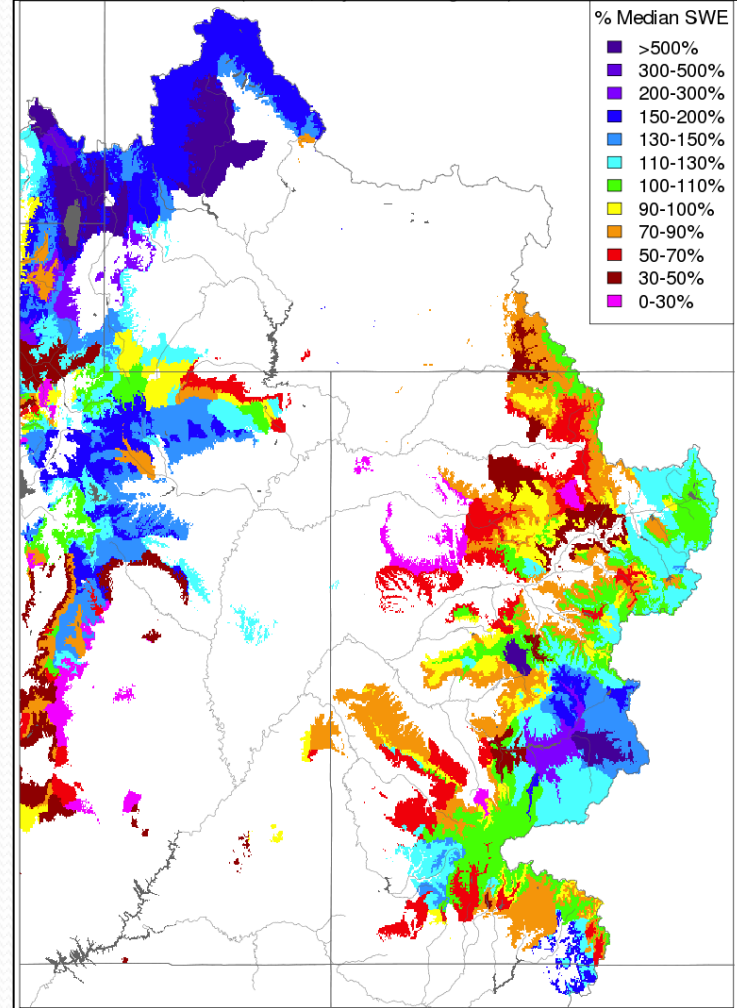
*This is a completely automated objective product based on SNOTEL data. This product is not meant to replace or supersede the official monthly forecasts.*

# CBRFC Model SWE

March 1, 2017



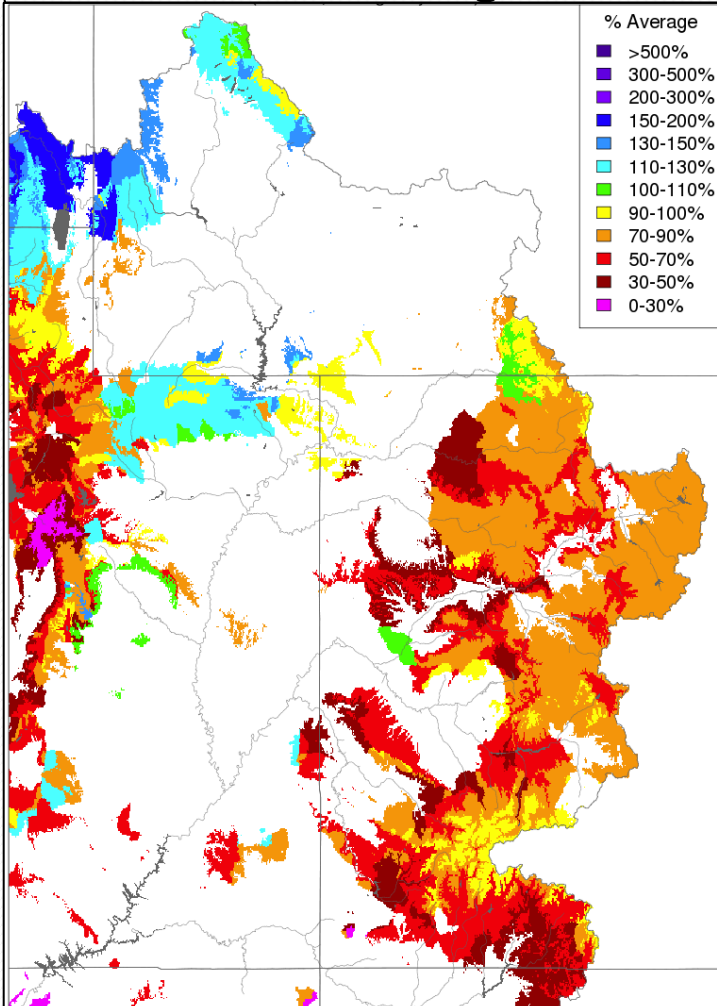
March 21, 2017



# CBRFC Model Soil Moisture

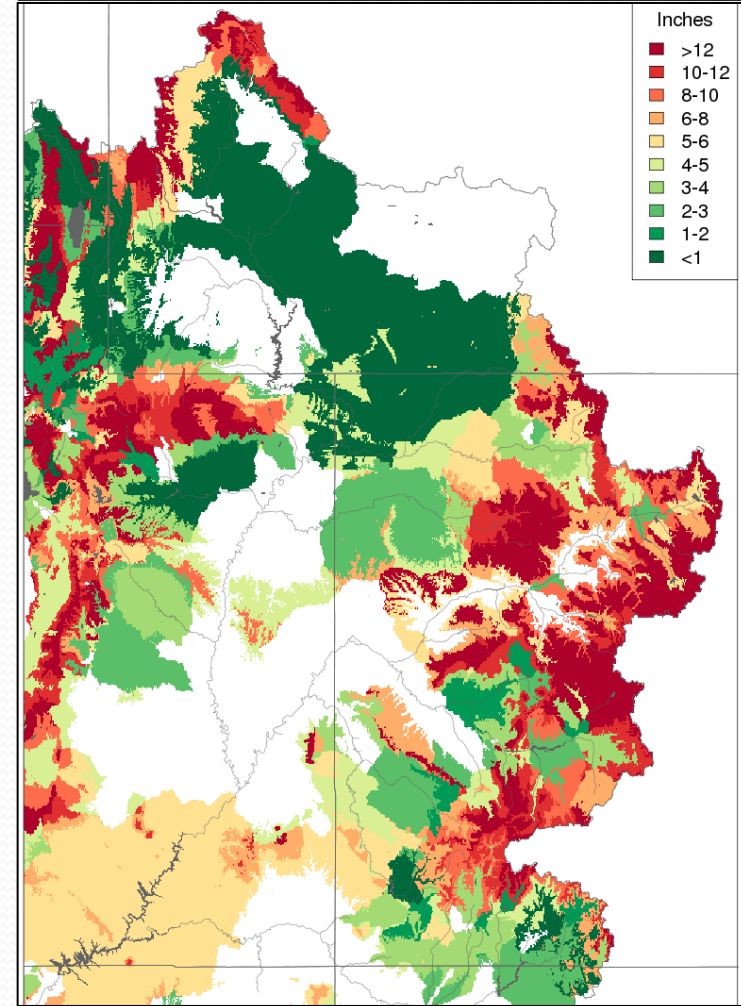
November 16, 2016

Fall % Average



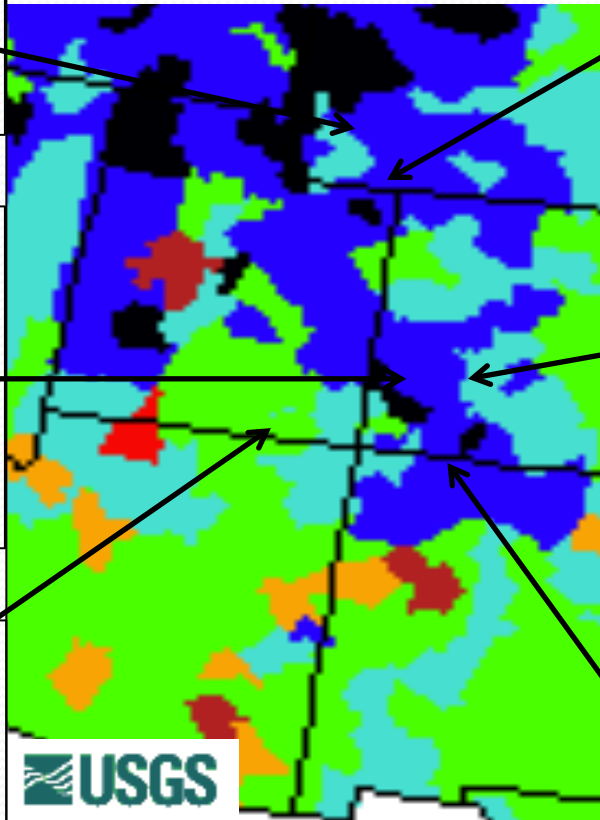
March 21, 2017

Inches to Saturation



# March Streamflow

## March 21, 2017 Observed 7-Day Average Streamflow Percentiles

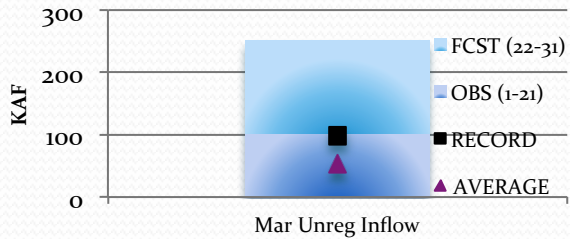


USGS

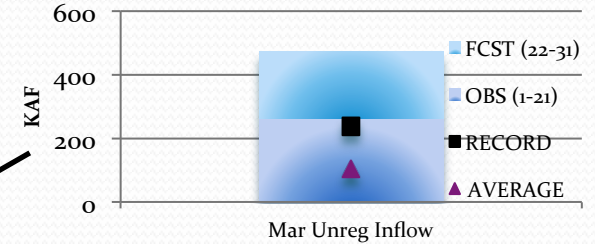
Explanation - Percentile classes

Low	<10	10-24	25-75	76-90	>90	High	No Data
	Much below normal	Below normal	Normal	Above normal	Much above normal		

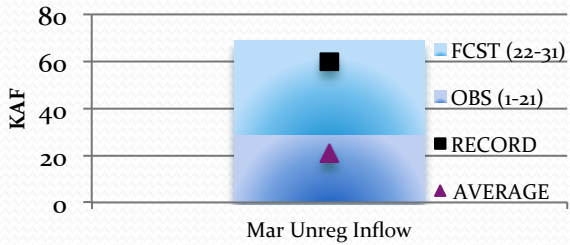
**FONTENELLE**



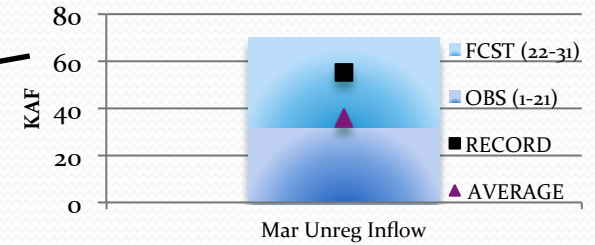
**FLAMING GORGE**



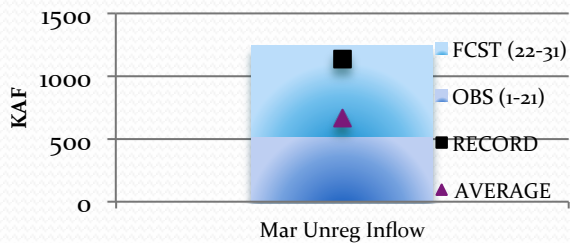
**MCPHEE**



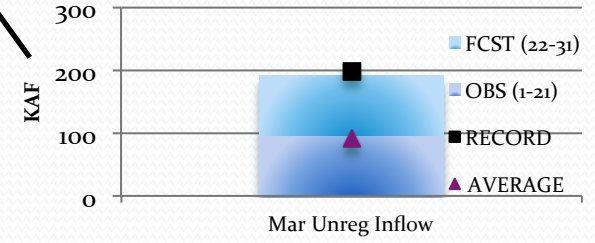
**BLUE MESA**



**LAKE POWELL**

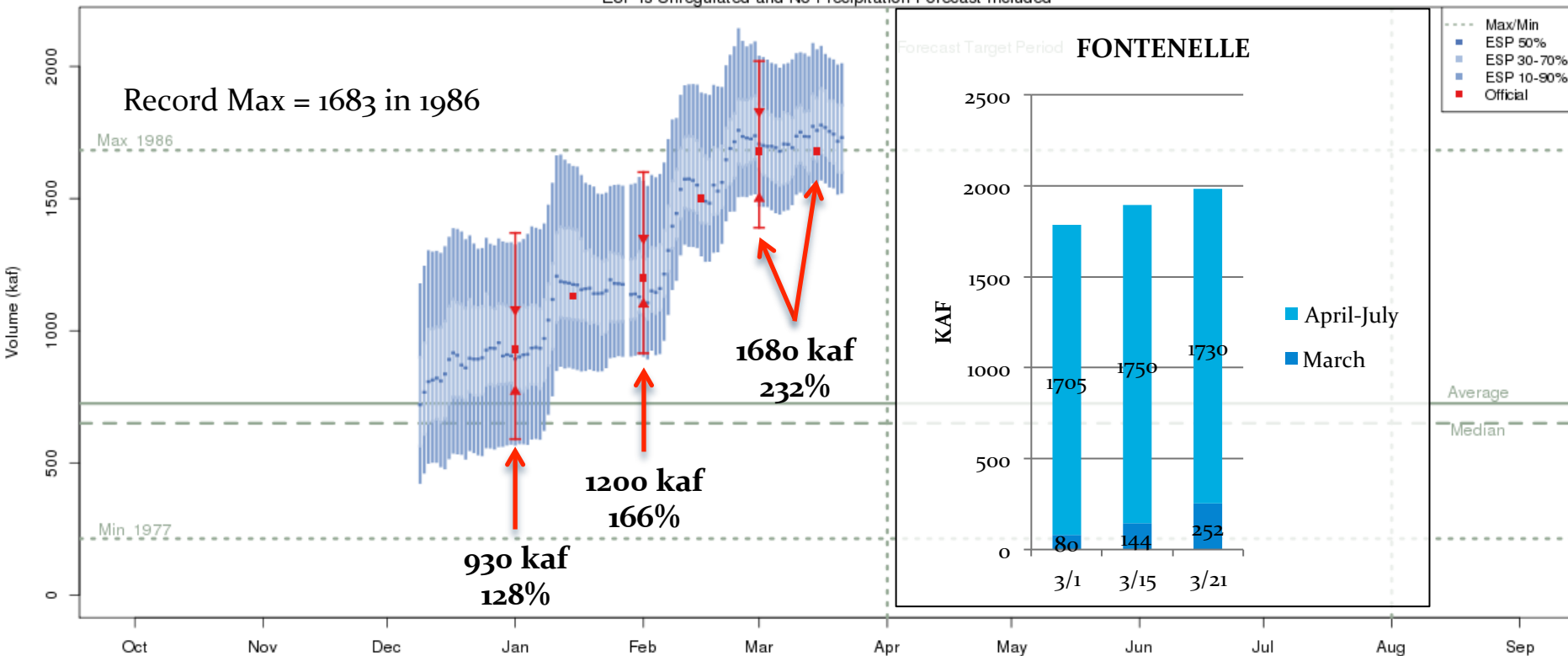


**NAVAJO**



# Forecast Evolution Plot: Fontenelle

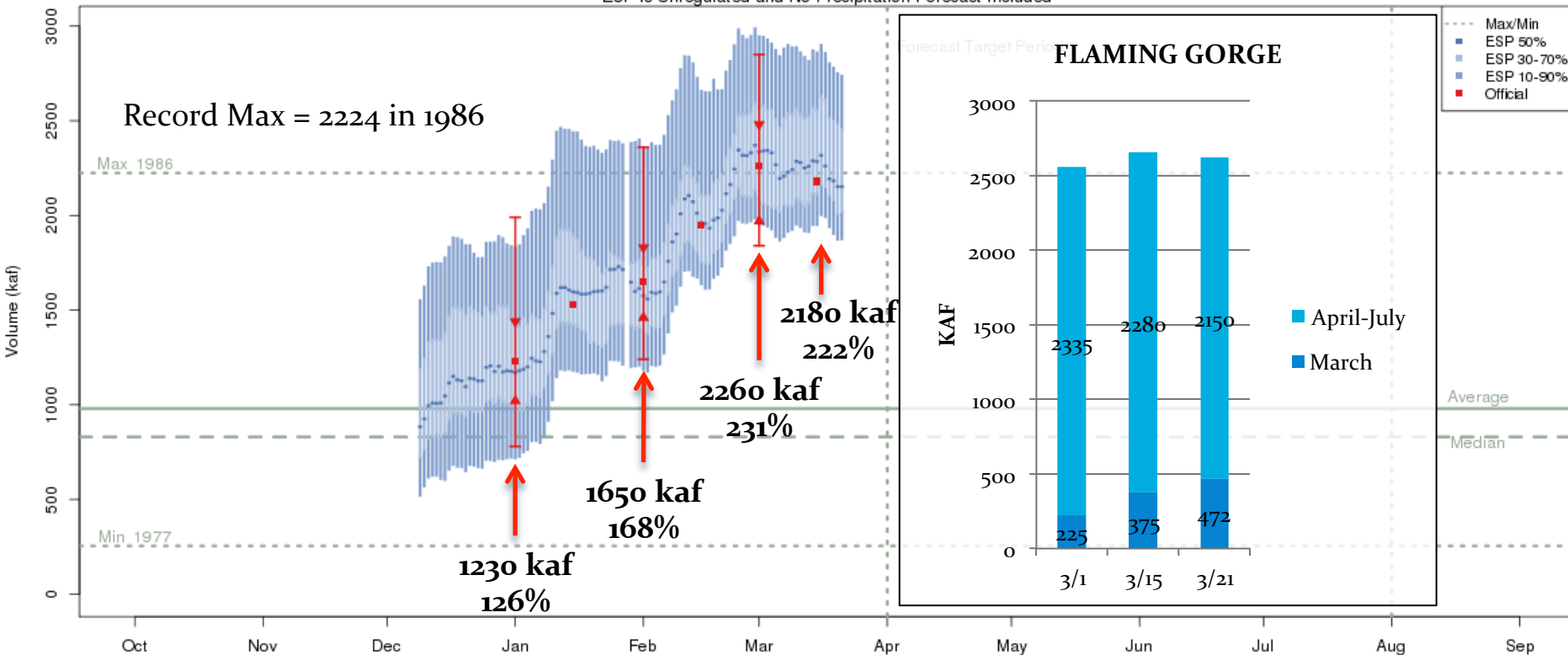
Green - Fontenelle Res- Fontenelle Nr (GBRW4)  
 2017-03-15 Apr-Jul Official 50% Forecast: 1680 kaf (232% of average)  
 ESP is Unregulated and No Precipitation Forecast Included



The latest (2017-03-21) 50% ESP forecast is 1731 kaf.  
 Plot Created 2017-03-21 13:52:18, NOAA / NWS / CBRFC  
 Forecasts in the forecast target period include observed values.

# Forecast Evolution Plot: Flaming Gorge

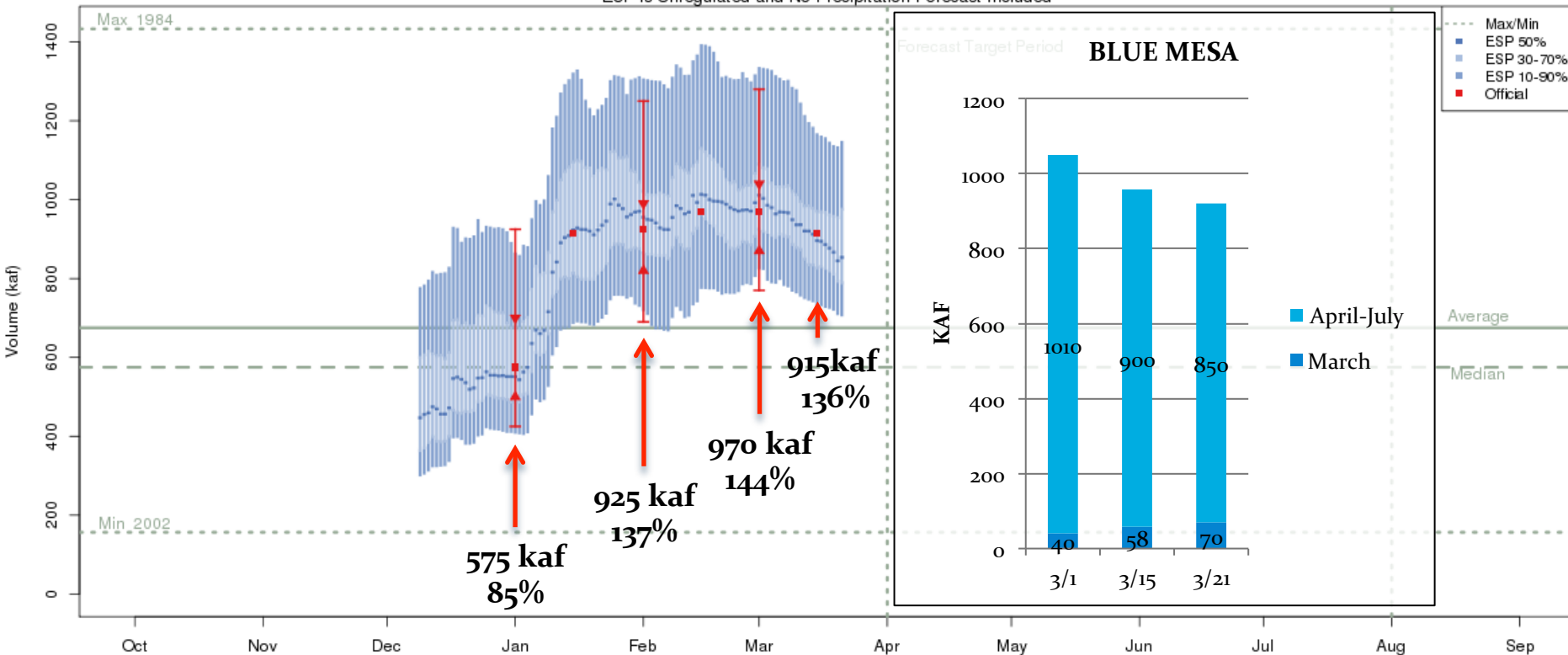
Green - Flaming Gorge Res- Flaming Gorge Dam- At (GRNU1)  
 2017-03-15 Apr-Jul Official 50% Forecast: 2180 kaf (222% of average)  
 ESP is Unregulated and No Precipitation Forecast Included



The latest (2017-03-21) 50% ESP forecast is 2152 kaf.  
 Plot Created 2017-03-21 13:54:42, NOAA / NWS / CBRFC  
 Forecasts in the forecast target period include observed values.

# Forecast Evolution Plot: Blue Mesa

**Gunnison - Blue Mesa Res (BMDC2)**  
**2017-03-15 Apr-Jul Official 50% Forecast: 915 kaf (136% of average)**  
 ESP is Unregulated and No Precipitation Forecast Included

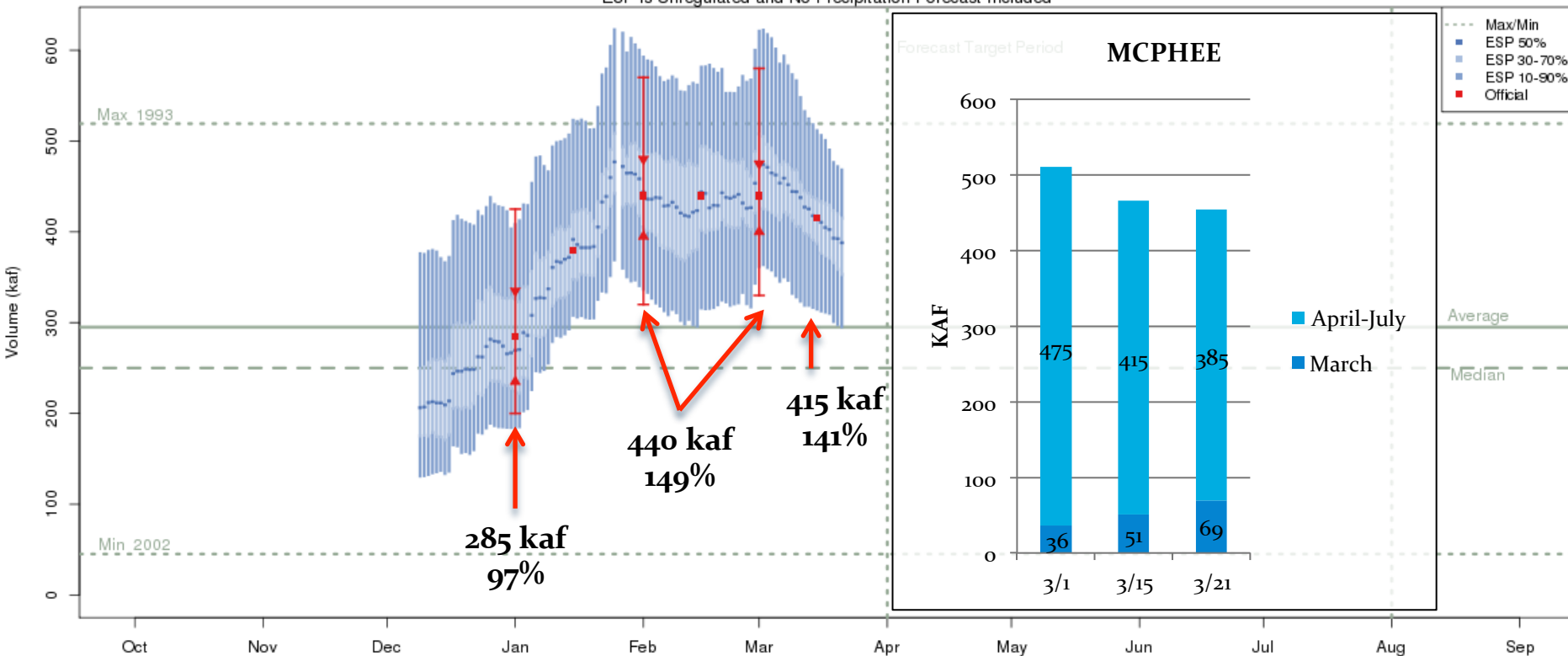


**The latest (2017-03-21) 50% ESP forecast is 854 kaf.**  
 Plot Created 2017-03-21 13:41:27, NOAA / NWS / CBRFC  
 Forecasts in the forecast target period include observed values.



# Forecast Evolution Plot: McPhee

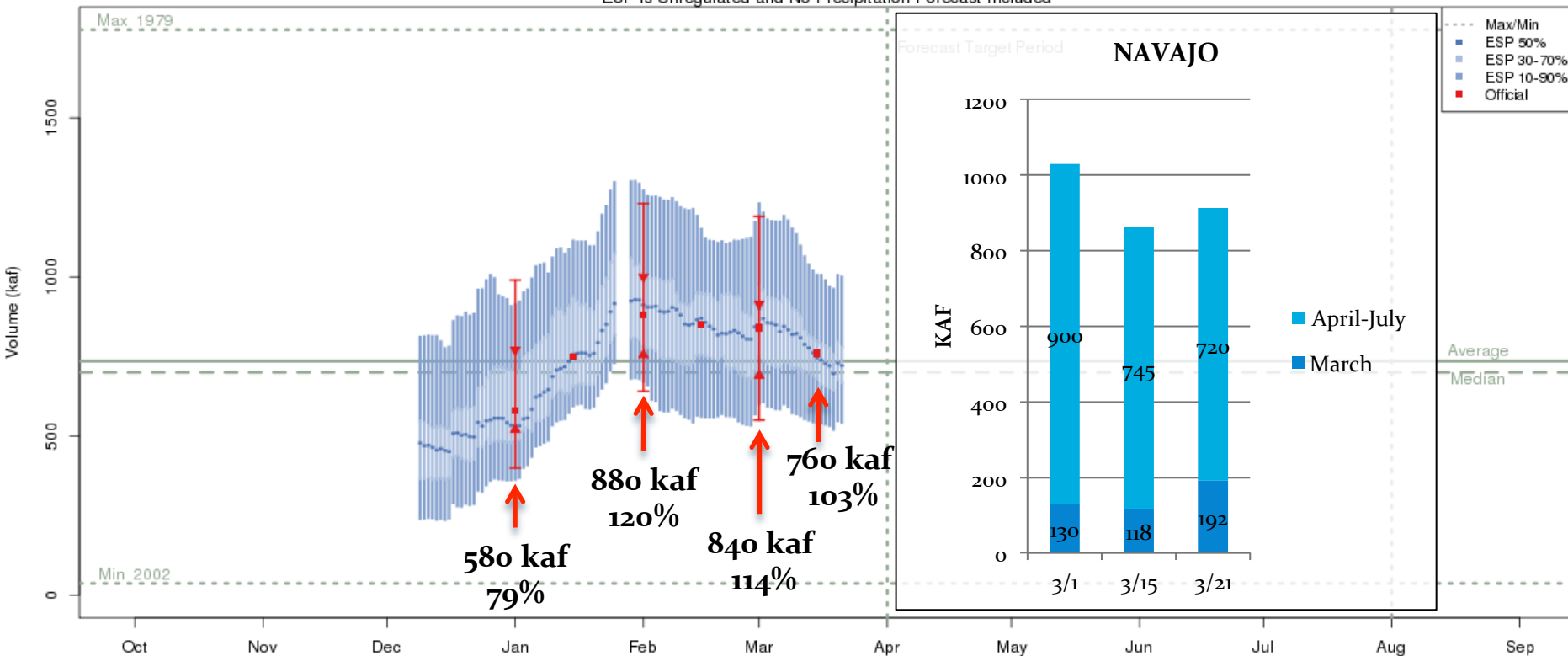
**Dolores - Mcphee Res (MPHC2)**  
**2017-03-15 Apr-Jul Official 50% Forecast: 415 kaf (141% of average)**  
 ESP is Unregulated and No Precipitation Forecast Included



**The latest (2017-03-21) 50% ESP forecast is 388 kaf.**  
 Plot Created 2017-03-21 14:02:44, NOAA / NWS / CBRFC  
 Forecasts in the forecast target period include observed values.

# Forecast Evolution Plot: Navajo

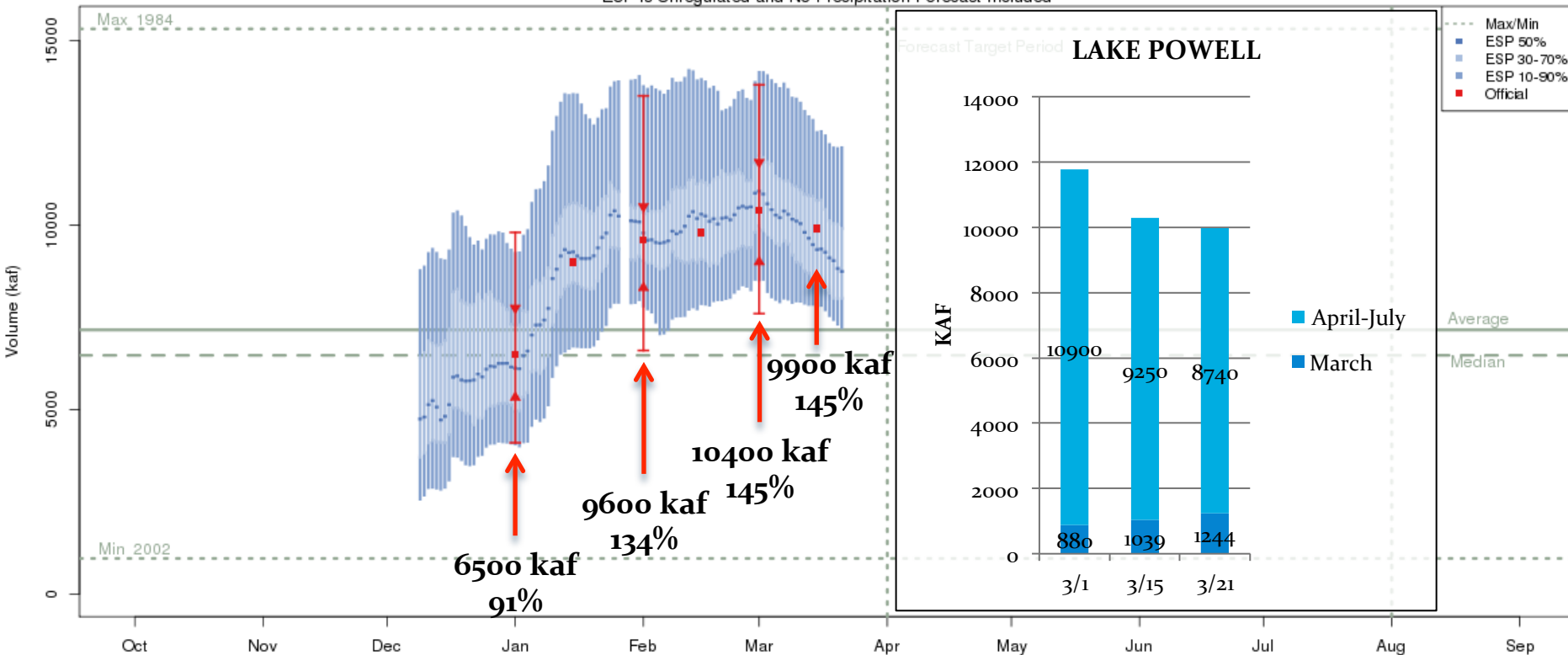
San Juan - Navajo Res- Archuleta- Nr (NVRN5)  
 2017-03-15 Apr-Jul Official 50% Forecast: 760 kaf (103% of average)  
 ESP is Unregulated and No Precipitation Forecast Included



The latest (2017-03-21) 50% ESP forecast is 721 kaf.  
 Plot Created 2017-03-21 14:04:04, NOAA / NWS / CBRFC  
 Forecasts in the forecast target period include observed values.

# Forecast Evolution Plot: Lake Powell

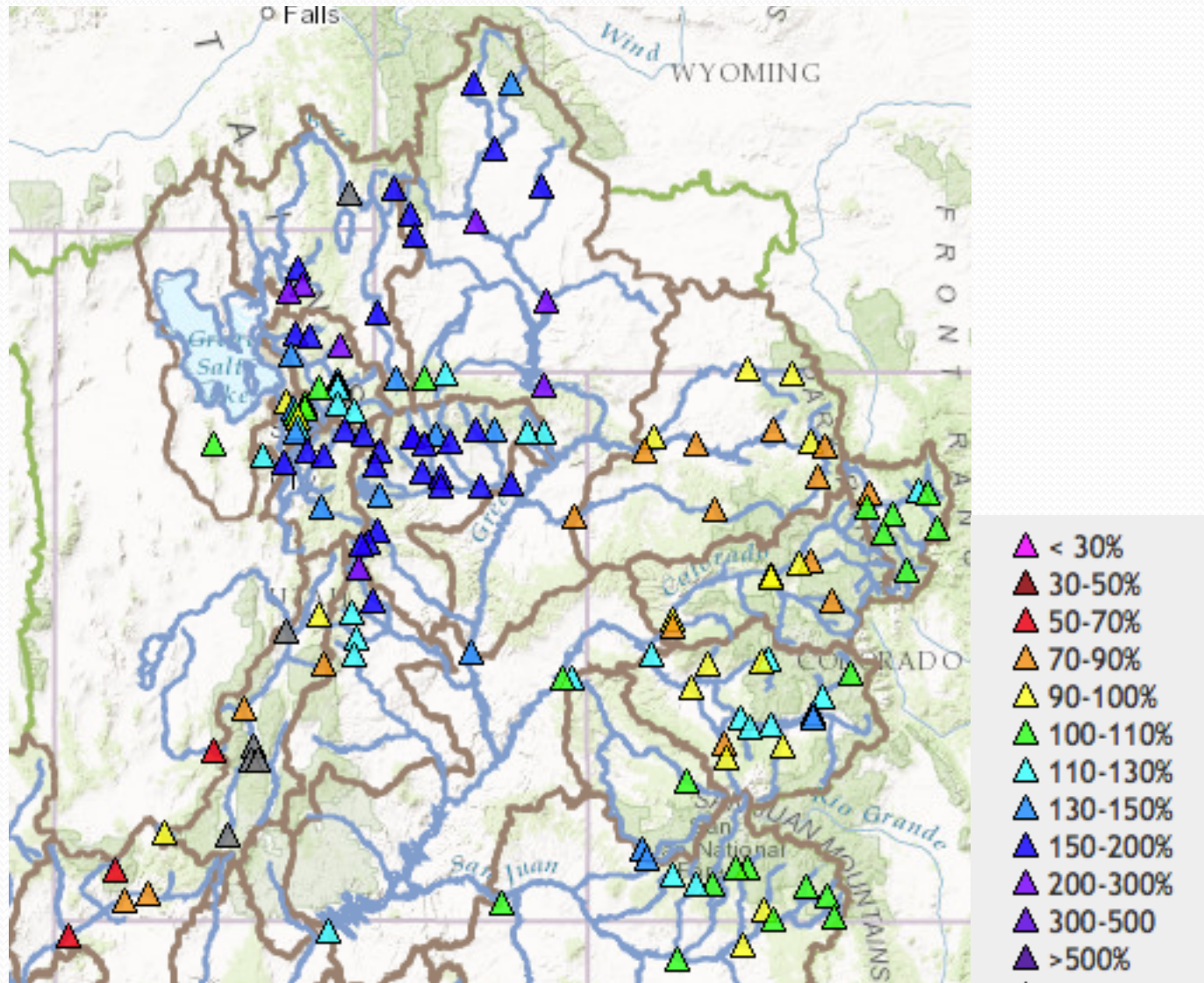
Colorado - Lake Powell- Glen Cyn Dam- At (GLDA3)  
 2017-03-15 Apr-Jul Official 50% Forecast: 9900 kaf (138% of average)  
 ESP is Unregulated and No Precipitation Forecast Included



The latest (2017-03-21) 50% ESP forecast is 8743 kaf.  
 Plot Created 2017-03-21 13:53:39, NOAA / NWS / CBRFC  
 Forecasts in the forecast target period include observed values.

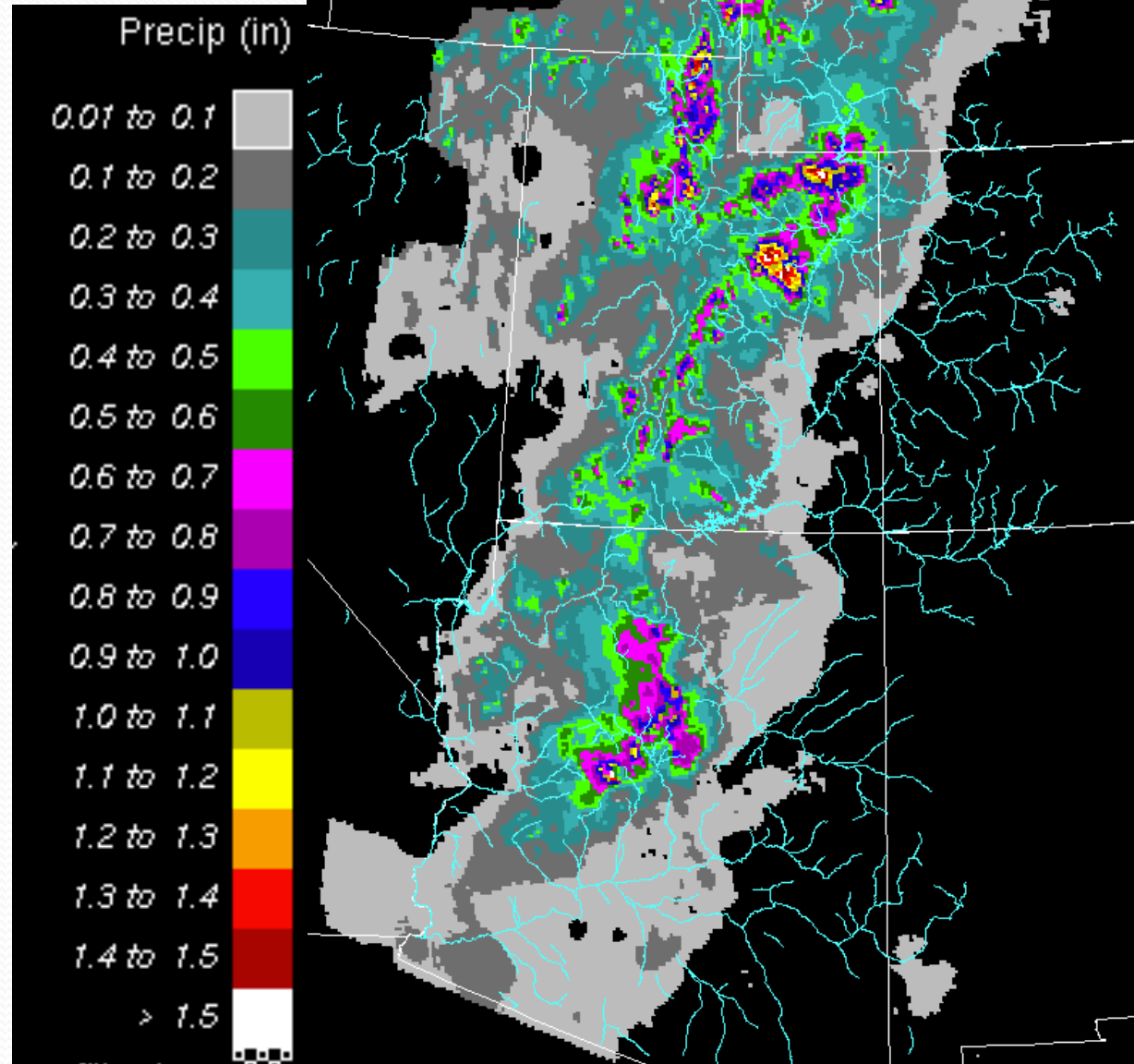
# March 22 ESP

## April-July Volumes (%Average)



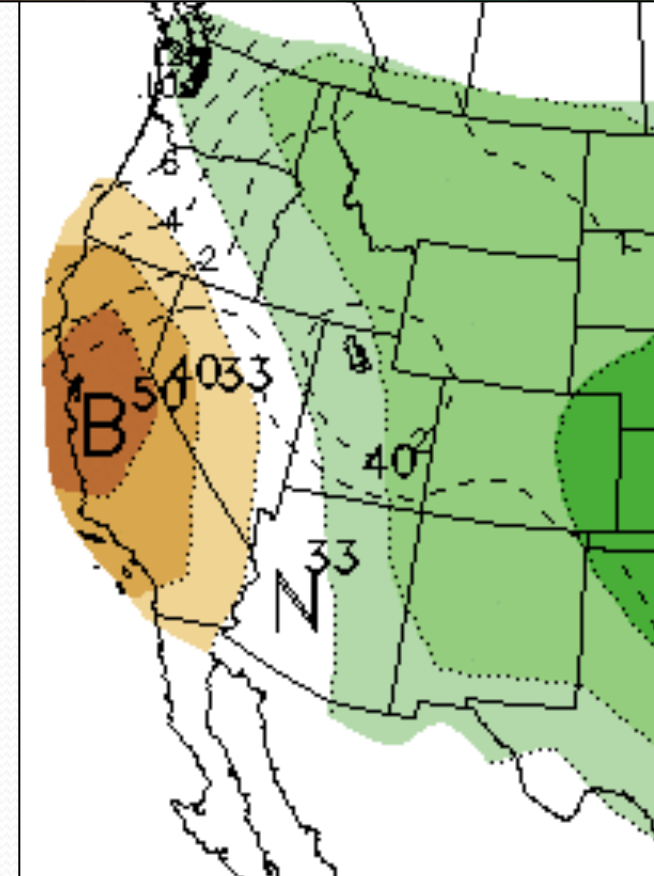
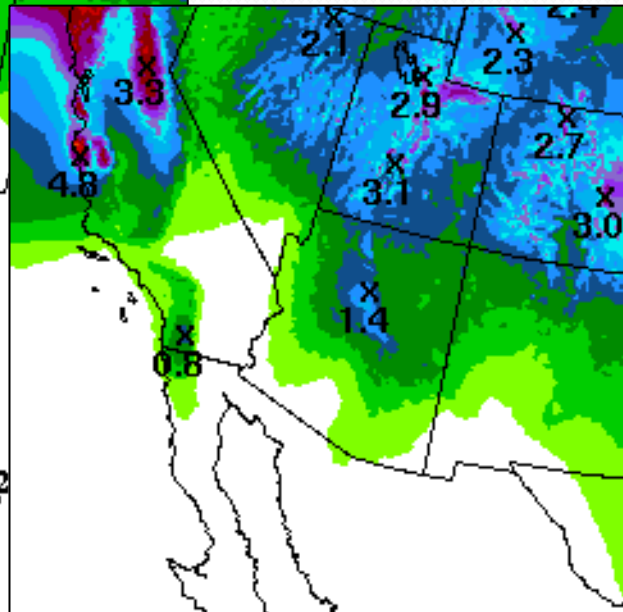
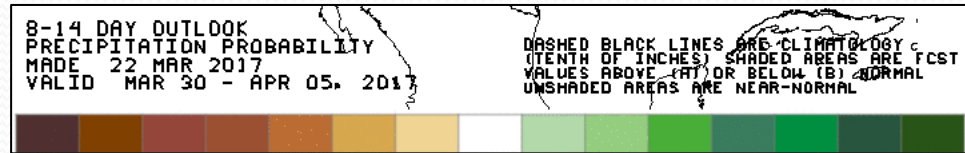
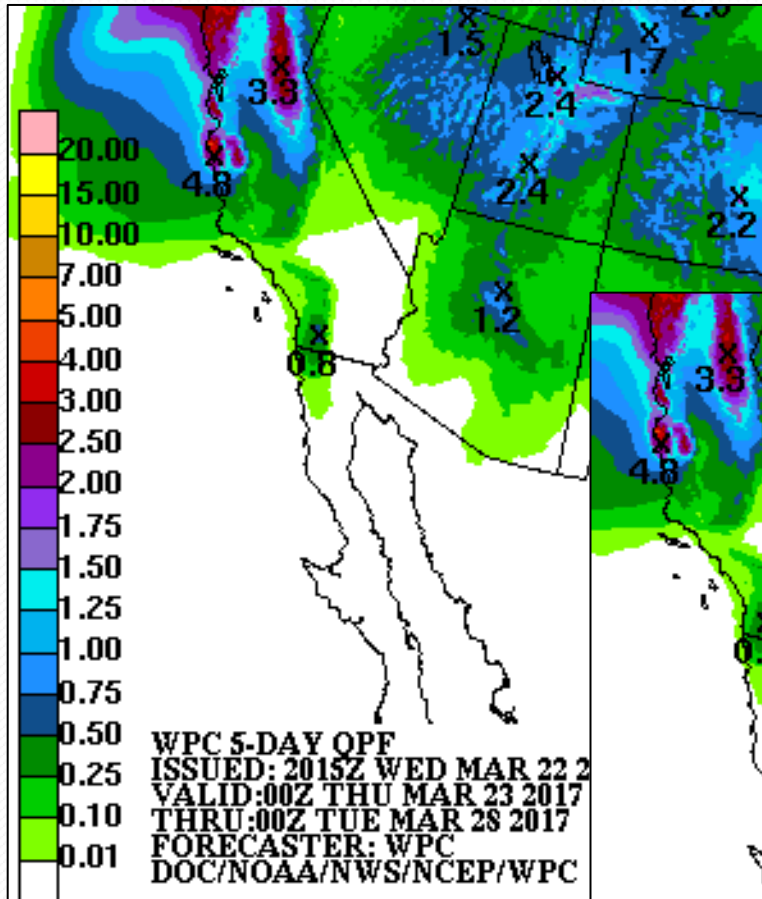
# 24 Hour Observed Precipitation

Ending 6 am March 23



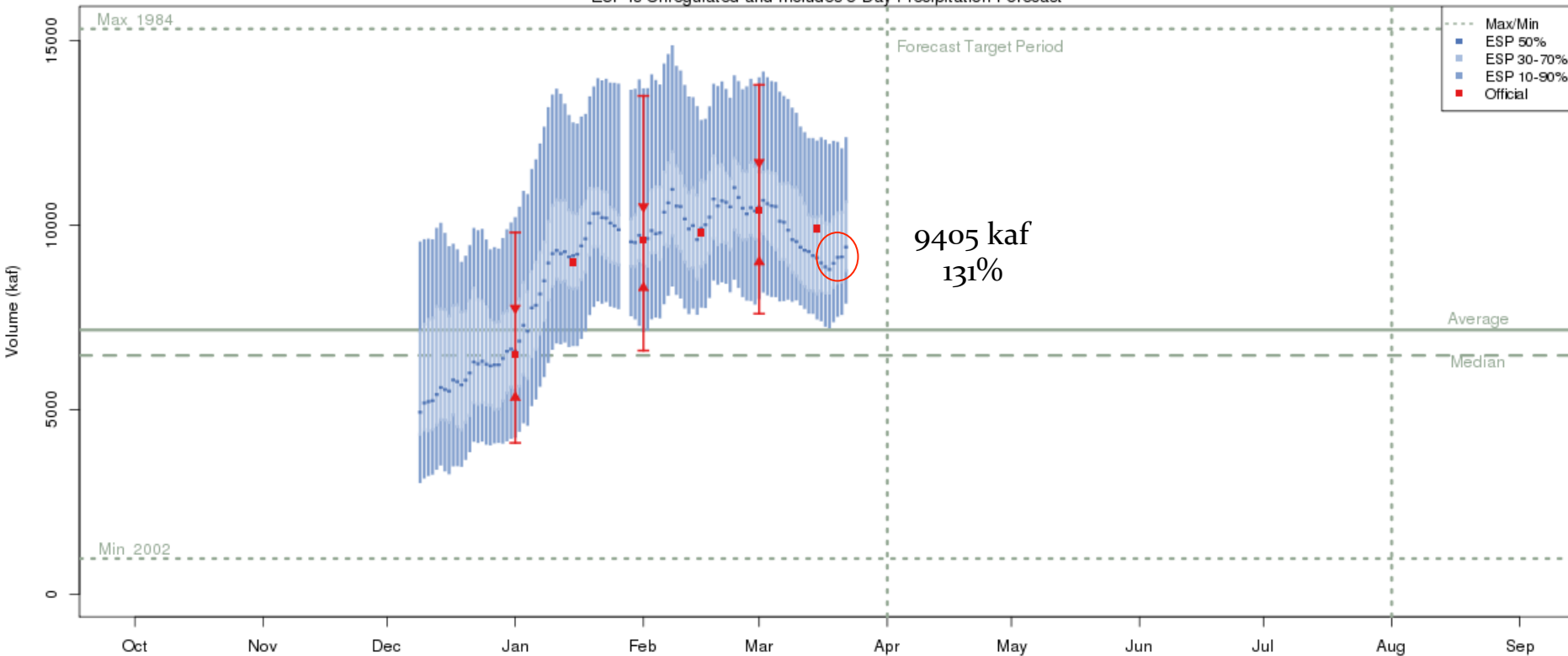
# Weather Forecast...

## More active next 1 - 2 weeks?



# Forecast Evolution Plot: Lake Powell (with 5 day QPF)

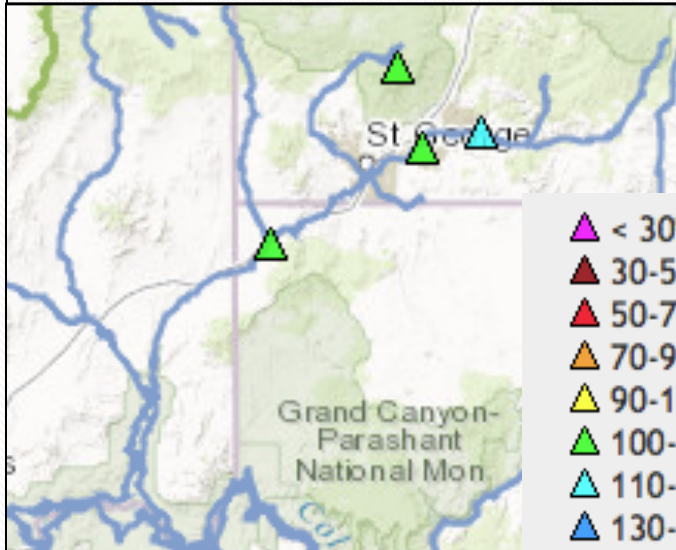
Colorado - Lake Powell- Glen Cyn Dam- At (GLDA3)  
2017-03-15 Apr-Jul Official 50% Forecast: 9900 kaf (138% of average)  
ESP is Unregulated and Includes 5 Day Precipitation Forecast



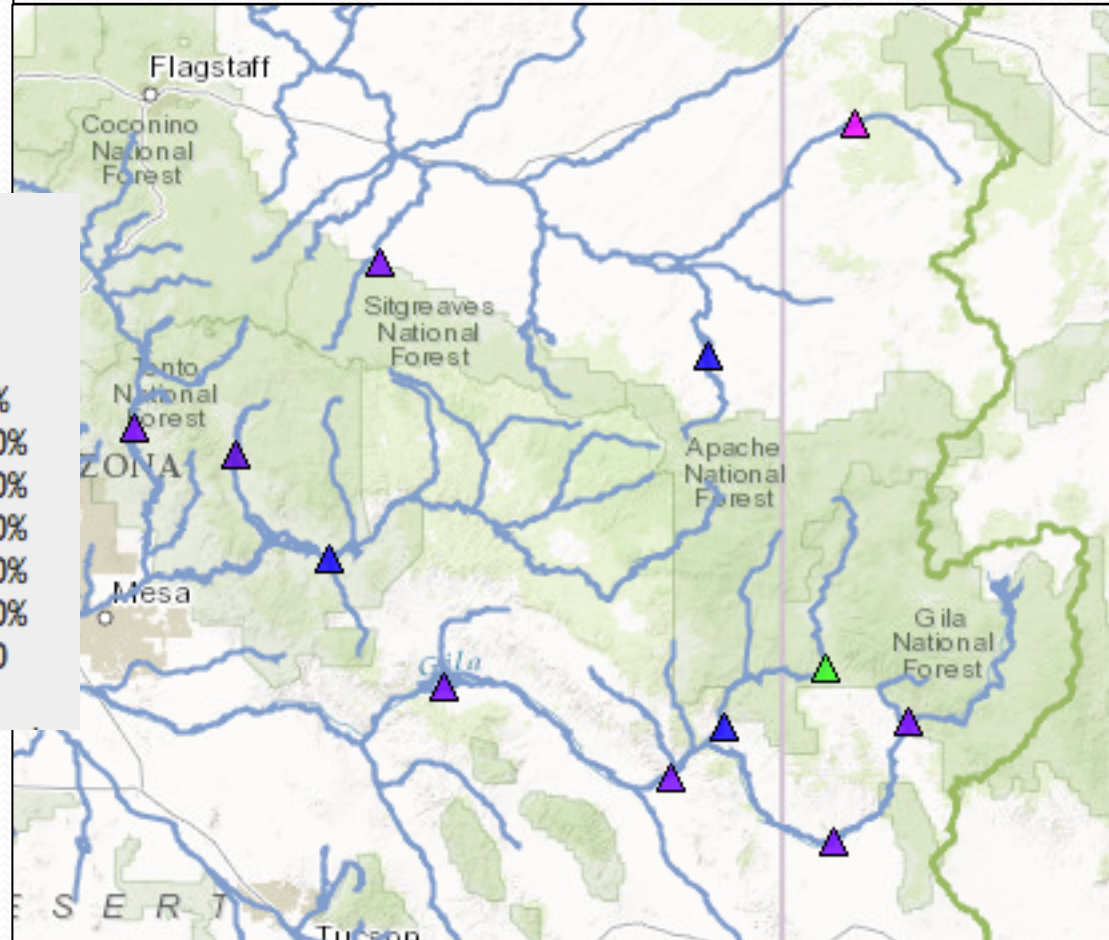
The latest (2017-03-22) 50% ESP forecast is 9405 kaf.  
Plot Created 2017-03-22 15:31:06, NOAA / NWS / CBRFC  
Forecasts in the forecast target period include observed values.

# Lower Colorado Water Supply

**Virgin River Basin  
April – July Forecast Volume  
(Latest ESP % Median)**



**Gila/Salt/Verde/Little Colorado River Basins  
January – May Forecast Volume  
(Latest ESP % Median)**



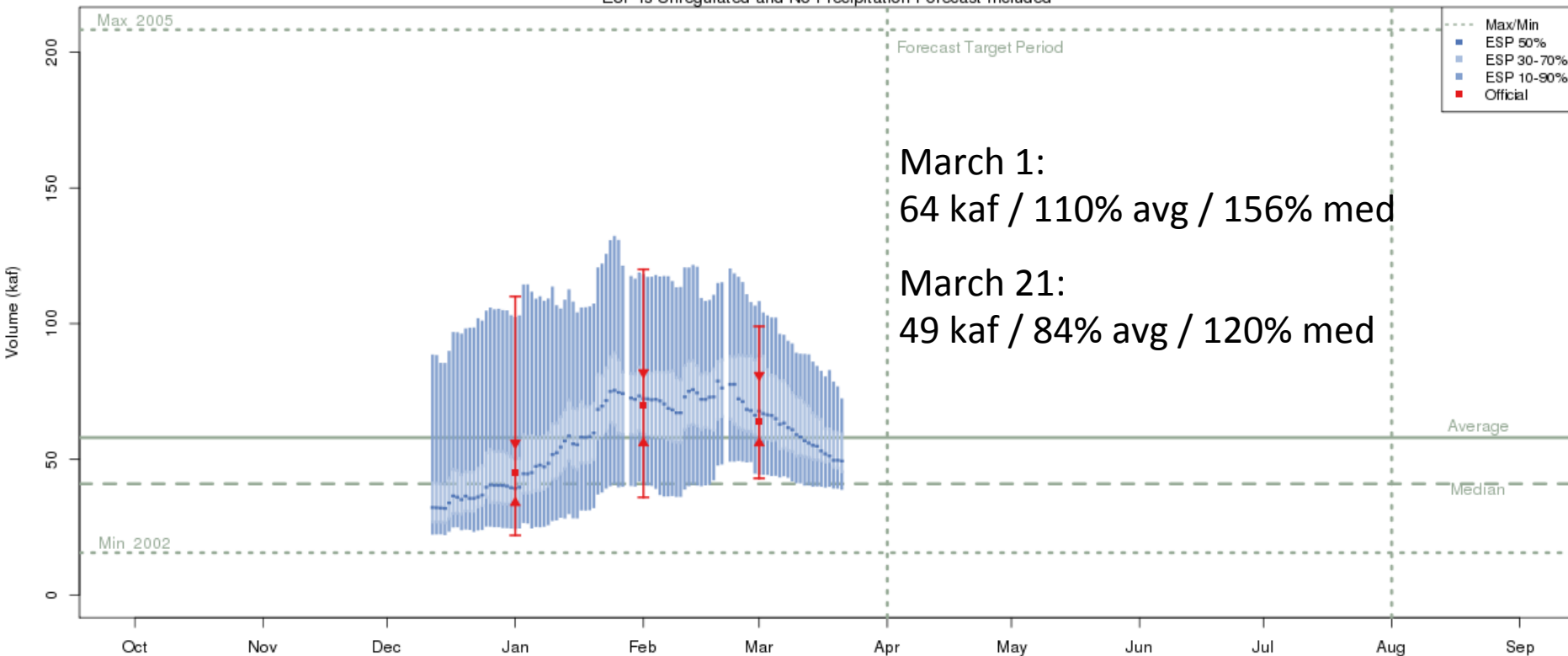


# Forecast Evolution Plot: Virgin at Virgin

Virgin - Virgin (VIRU1)

2017-03-01 Apr-Jul Official 50% Forecast: 64 kaf (110% of average)

ESP is Unregulated and No Precipitation Forecast Included



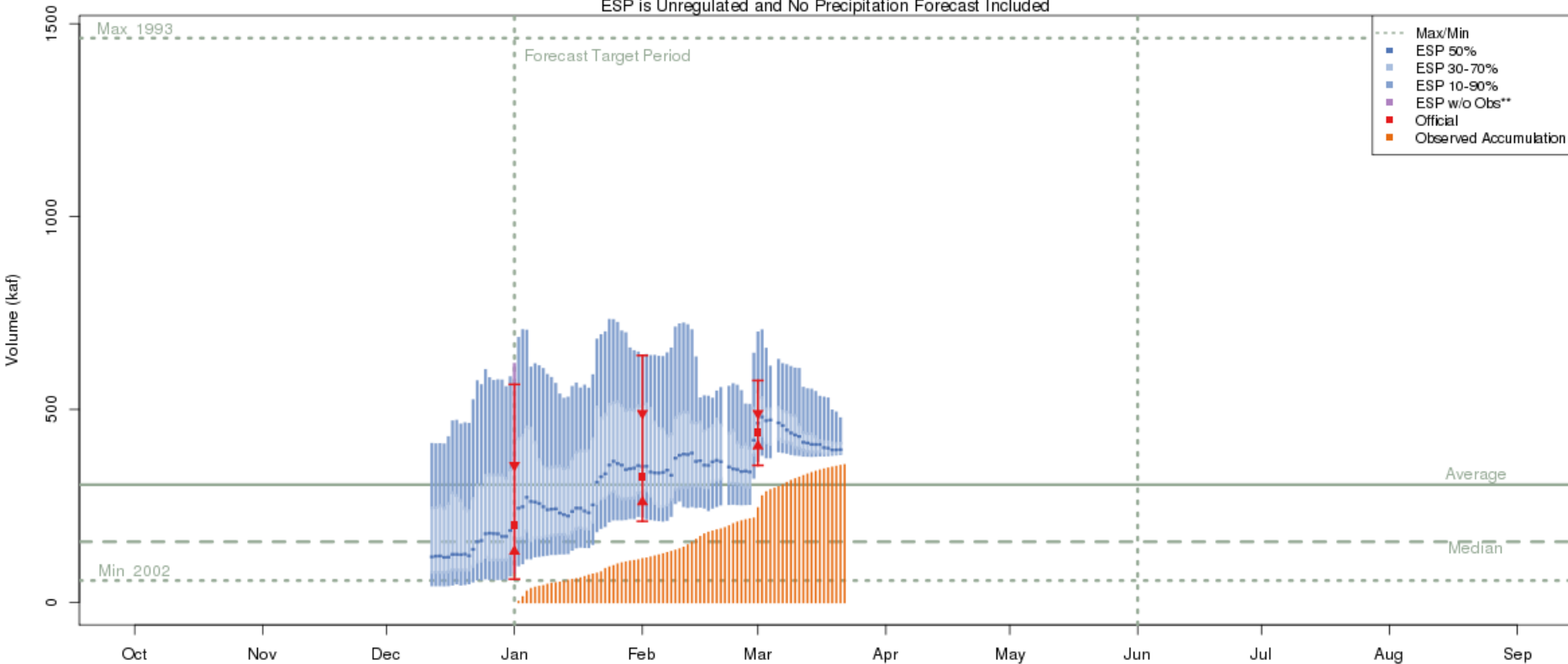
The latest (2017-03-21) 50% ESP forecast is 49 kaf.

Plot Created 2017-03-22 14:56:16, NOAA / NWS / CBRFC

Forecasts in the forecast target period include observed values.

# Forecast Evolution Plot: Verde - Tangle Creek

Verde - Tangle Ck- Blo- Horseshoe Dam- Abv (VDTA3)  
2017-03-01 Jan-May Official 50% Forecast: 440 kaf (280% of median)  
ESP is Unregulated and No Precipitation Forecast Included



The latest (2017-03-21) 50% ESP forecast is 396 kaf.  
Plot Created 2017-03-22 14:56:01, NOAA / NWS / CBRFC  
Forecasts in the forecast target period include observed values.