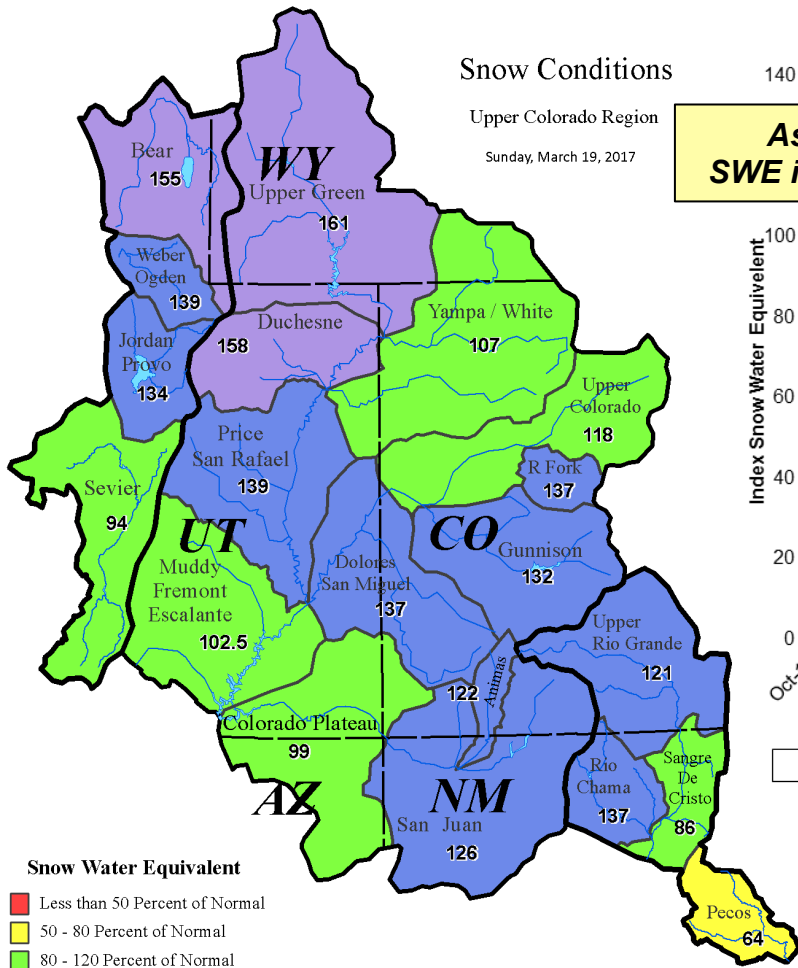




Lake Powell Operations
CRFS Spring 2017
March 23, 2017

RECLAMATION

Snow Conditions

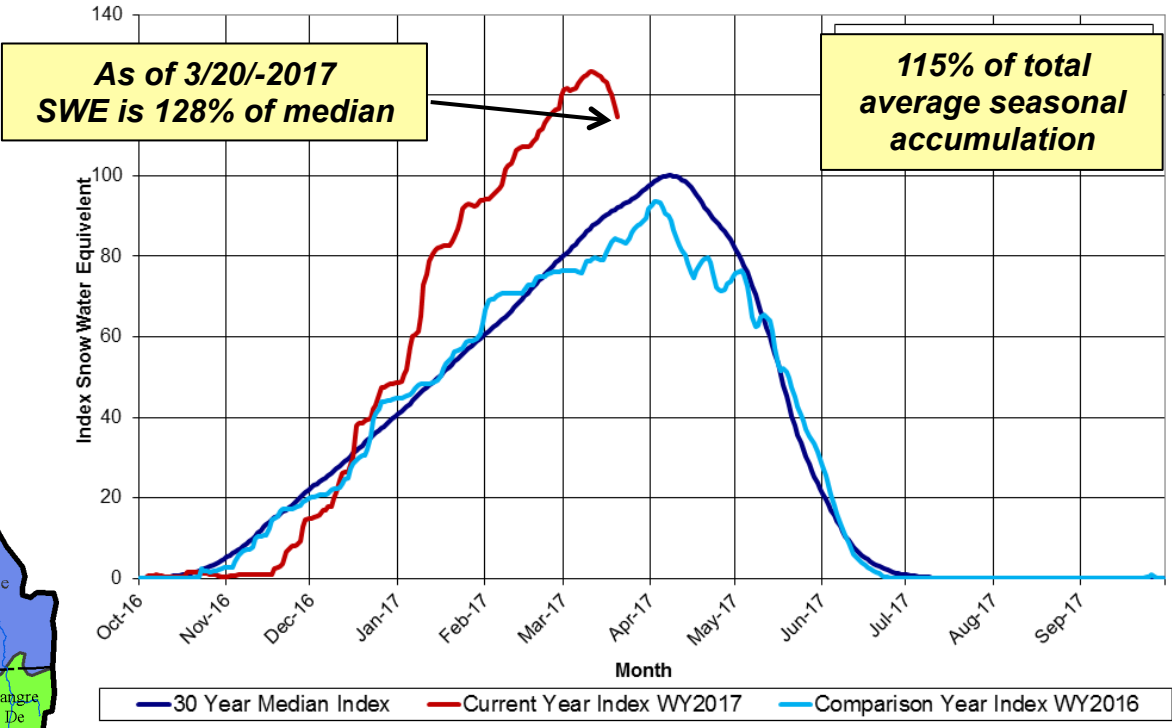


Snow Conditions
Upper Colorado Region
Sunday, March 19, 2017

Snow Water Equivalent

- Less than 50 Percent of Normal
- 50 - 80 Percent of Normal
- 80 - 120 Percent of Normal
- 120 - 150 Percent of Normal
- Greater than 150 Percent of Normal

Upper Colorado River Basin Snotel Tracking
Aggregate of 116 Snotel Sites in the Upper Colorado River Basin

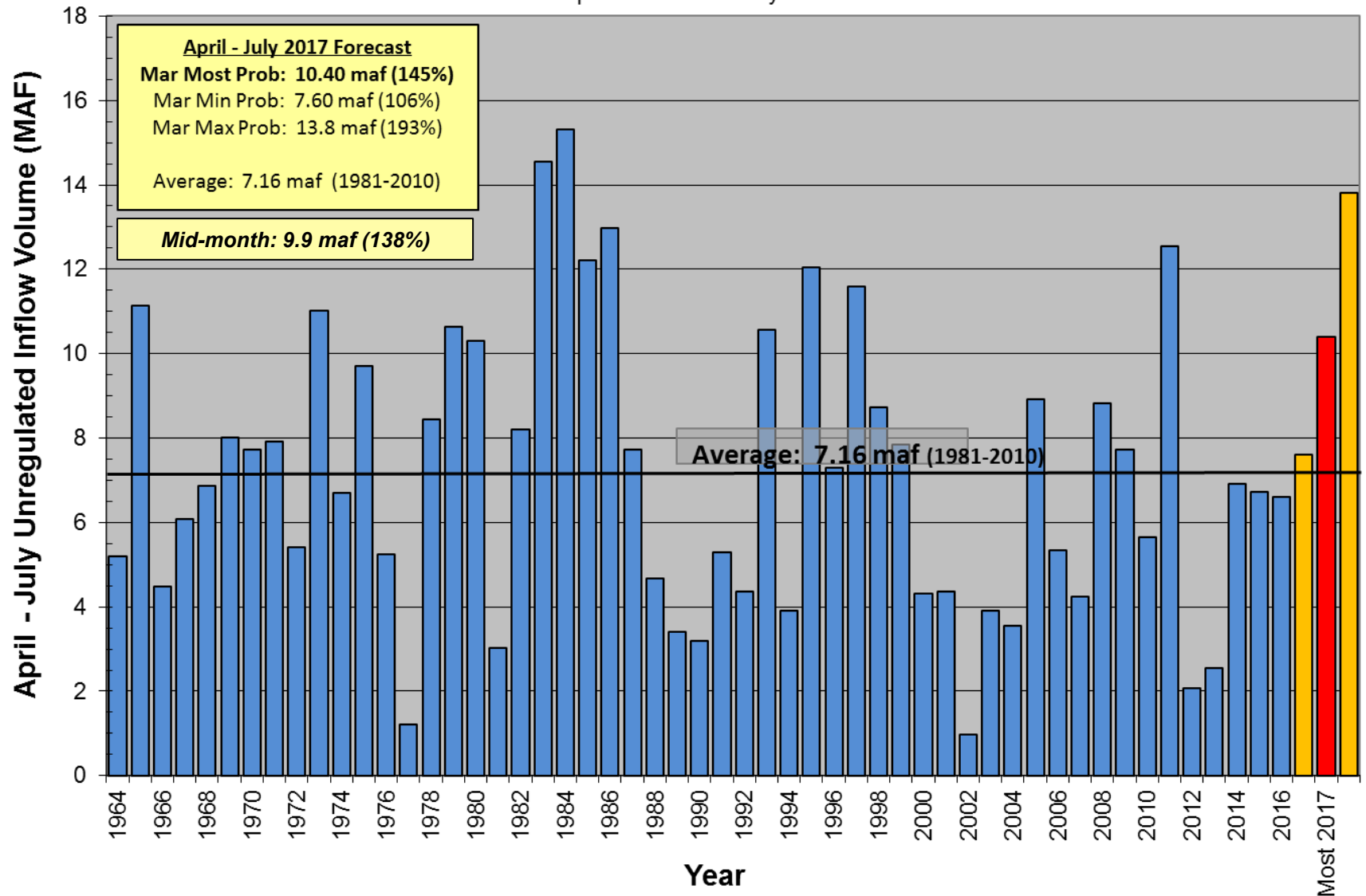


Data Provided by the Natural Resource Conservation Service

Data Provided by the Natural Resource Conservation Service

Upper Colorado
GIS
Region

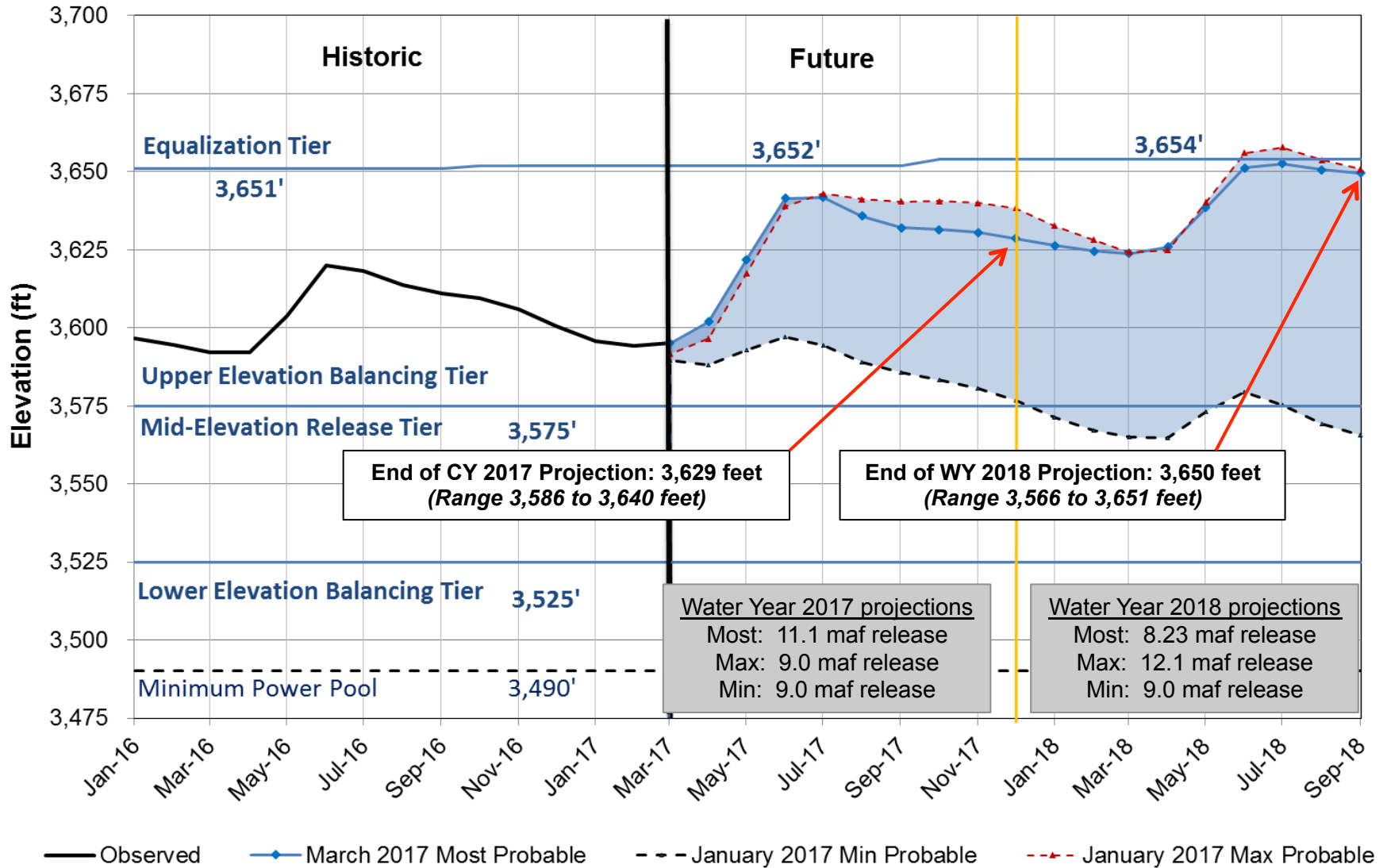
Lake Powell Unregulated Inflow
 April - July 2017 Forecast
 Issued March 1st
 Comparison with History



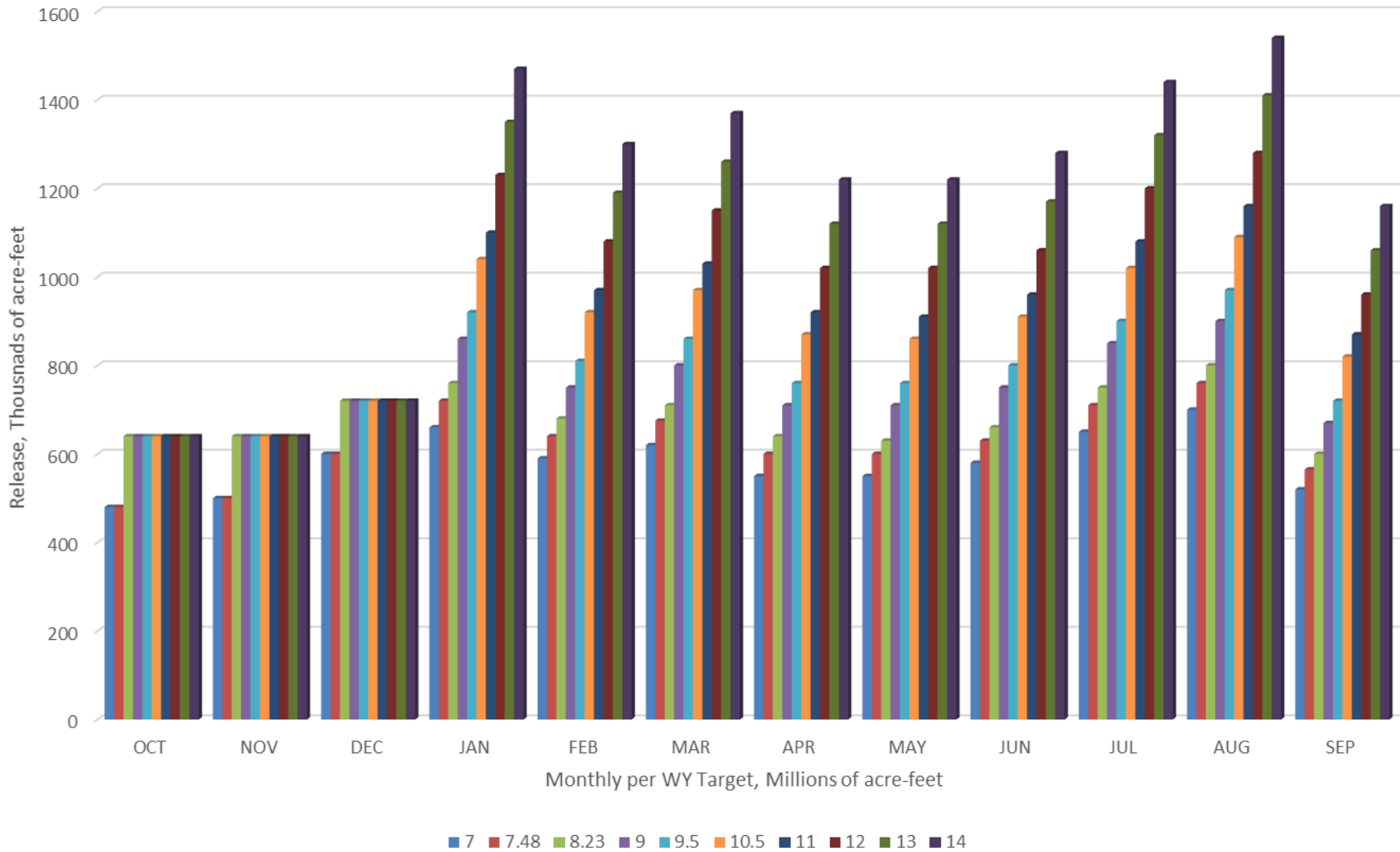
* Water Year 2017 forecast: 14.35 maf (132%)

Lake Powell End of Month Elevations

Historic and Projected based on March 2017 Modeling



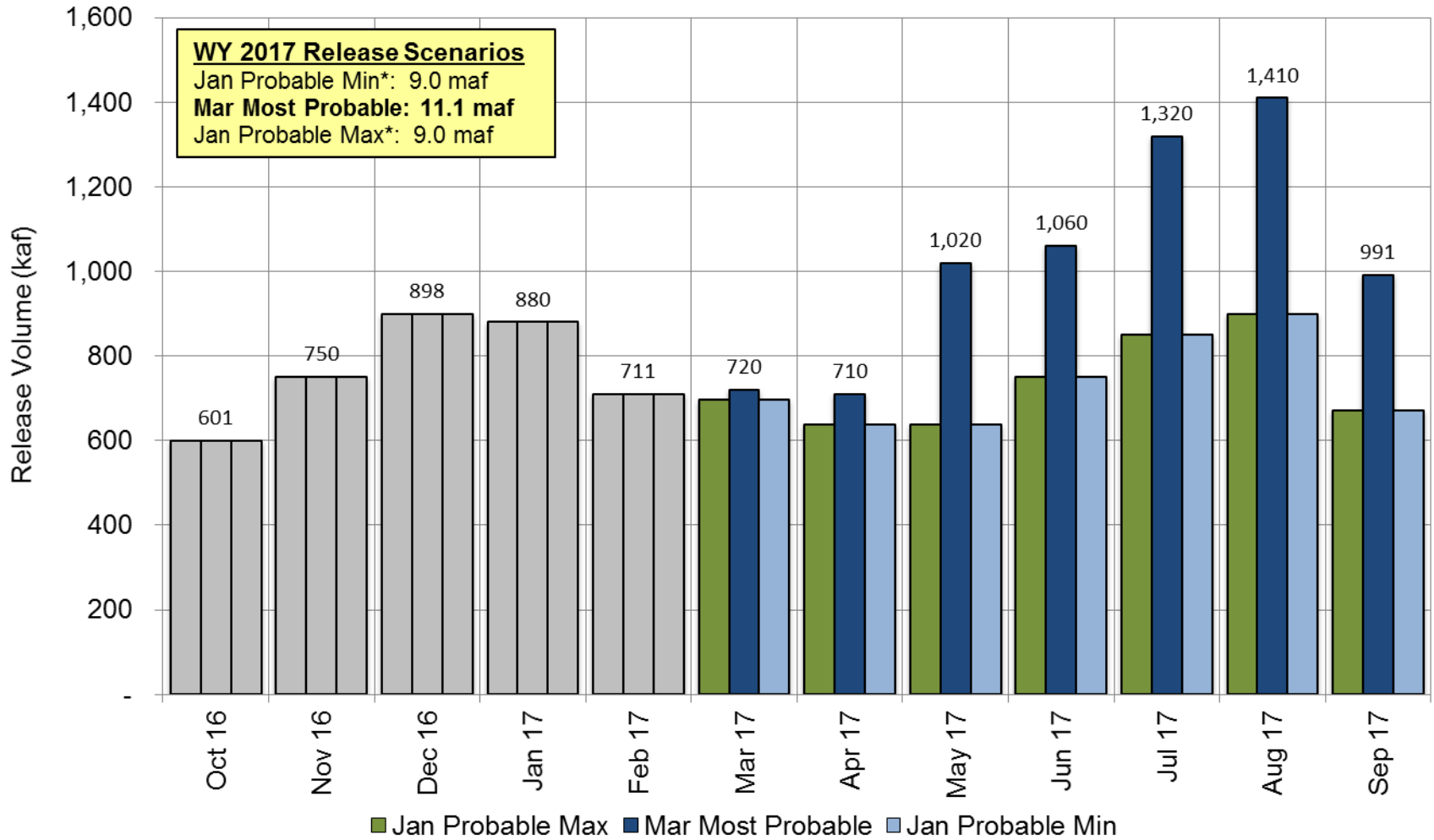
LTEMP Monthly Release Volumes



Potential Lake Powell Monthly Release Volume Distribution

Release Scenarios for Water Year 2017

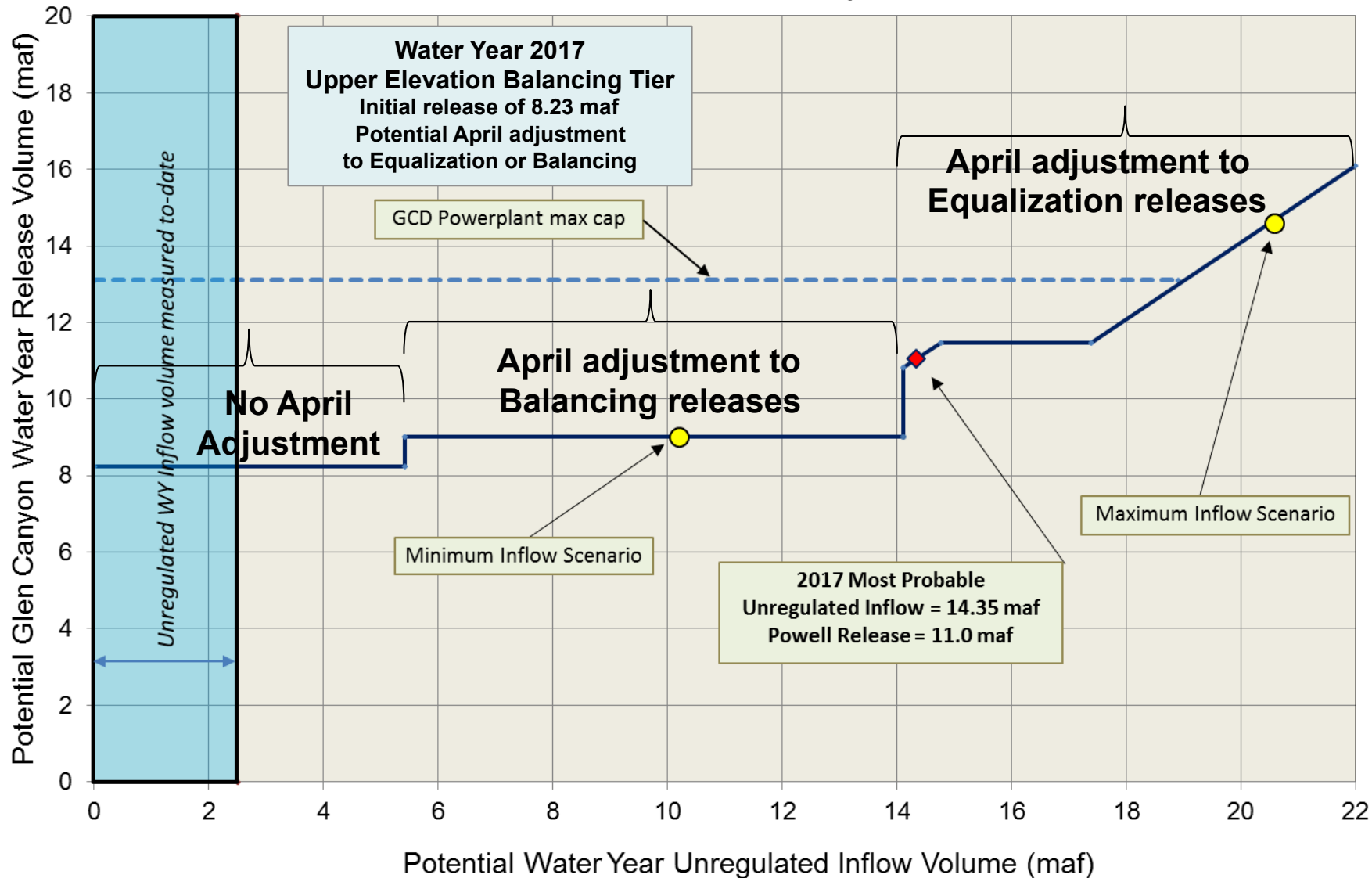
Updated March 2017



* Probable Min and Max annual release volume is based on January Min and Max inflow forecasts

Potential Lake Powell Release Scenarios

Water Year 2017 Release Volume as a Function of Unregulated Inflow Volume
based on March 2017 24-Month Study Conditions



Glen Canyon Power Plant Planned Unit Outage Schedule for Water Year 2017

Unit Number	Oct 2016	Nov 2016	Dec 2016	Jan 2017	Feb 2017	Mar 2017	Apr 2017	May 2017	Jun 2017	Jul 2017	Aug 2017	Sep 2017	
1													
2													
3													
4													
5													
6													
7													
8													
Units Available	6	6	6	6	5	5	6	7	7	7	7	6	
Capacity (cfs)	21,000	21,000	19,700	19,750	16,100	15,900	19,400	23,000	23,000	23,000	23,000	19,400	
Capacity (kaf/month)	1,310	1,280	1,180	1,270	920	1,070	1,230	1,410	1,370	1,410	1,410	1,190	
Max (kaf) ¹	601	750	898	880	730	696	637	638	750	850	900	670	9.0
Most (kaf) ²	601	750	898	880	711	720	710	1,020	1,060	1,320	1,410	975	11.06
Min (kaf) ¹	601	750	898	880	730	696	637	638	750	850	900	670	9.0

(updated 3-10-2017)

1 Projected release, based on Jan 2017 Min and Max Probable Inflow Projections and 24-Month Study model runs
2 Projected release, based on Mar 2017 Most Probable Inflow Projections and 24-Month Study model runs



Glen Canyon Power Plant Planned Unit Outage Schedule for Water Year 2018

Unit Number	Oct 2017	Nov 2017	Dec 2017	Jan 2018	Feb 2018	Mar 2018	Apr 2018	May 2018	Jun 2018	Jul 2018	Aug 2018	Sep 2018	
1		Possible HFE											
2													
3													
4													
5													
6													
7													
8													
Units Available	5	7	7	7	5	5	5	6/8	8	8	8	7	
Capacity (cfs)	15,900	23,000	23,000	23,000	15,800	15,800	15,800	26,600	26,600	26,600	26,600	23,100	
Capacity (kaf/month)	1,050	1,370	1,410	1,270	910	970	1,030	1,490	1,580	1,630	1,630	1,450	
Max (kaf) ¹	640	640	720	1,230	1,080	1,150	1,020	1,020	1,100	1,200	1,300	966	12.1
Most (kaf) ²	640	640	720	760	680	710	640	630	660	750	800	640	8.23
Min (kaf) ¹	640	740	720	860	760	710	640	640	750	850	900	680	8.8

¹ Projected release, based on Jan 2017 Min and Max Probable Inflow Projections and 24-Month Study model runs

² Projected release, based on Mar 2017 Most Probable Inflow Projections and 24-Month Study model runs

(updated 3-10-2017)



Glen Canyon Dam Hourly Release Pattern March 2017

