

Current Conditions and Forecasts

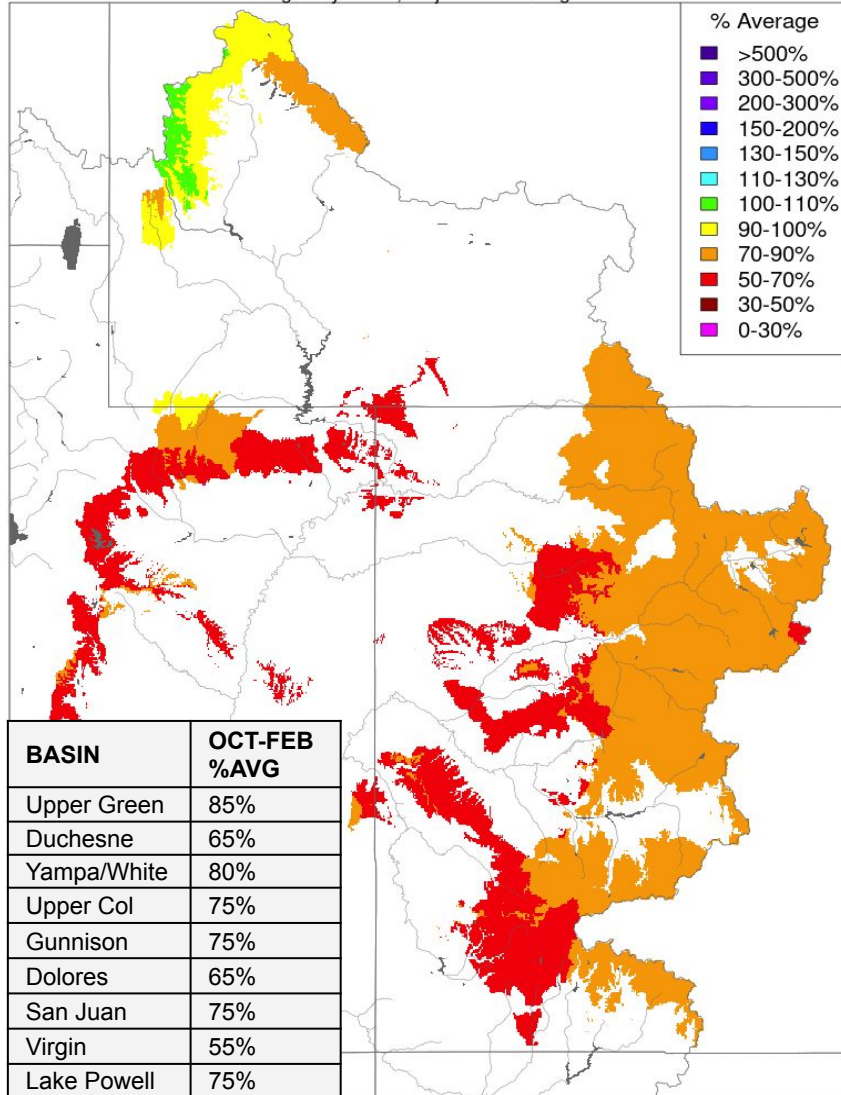
CRFS March 25, 2021

Water Year Precipitation: October-February

Upper Colorado

Water Year Precipitation, October 2020 - February 2021

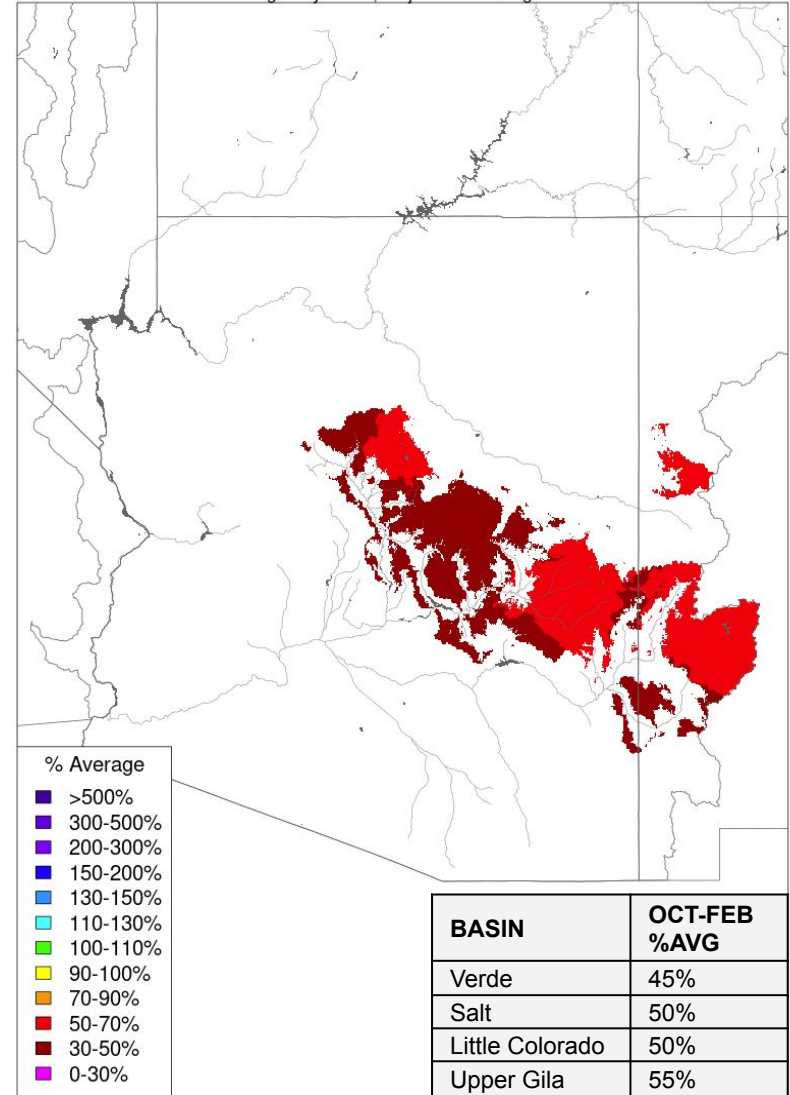
Averaged by Basin, Major Contributing Areas



Lower Colorado

Water Year Precipitation, October 2020 - February 2021

Averaged by Basin, Major Contributing Areas

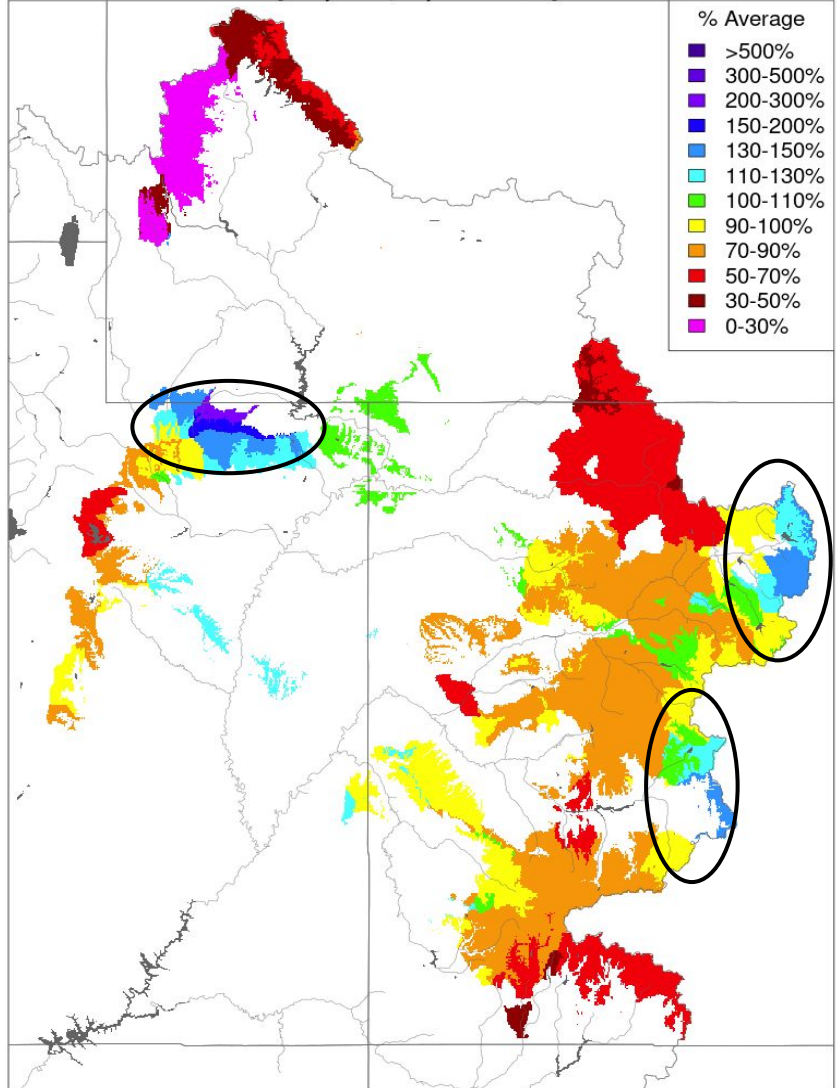


March 1-24 Precipitation

Upper Colorado

Month to Date Precipitation - March 24 2021

Averaged by Basin, Major Contributing Areas

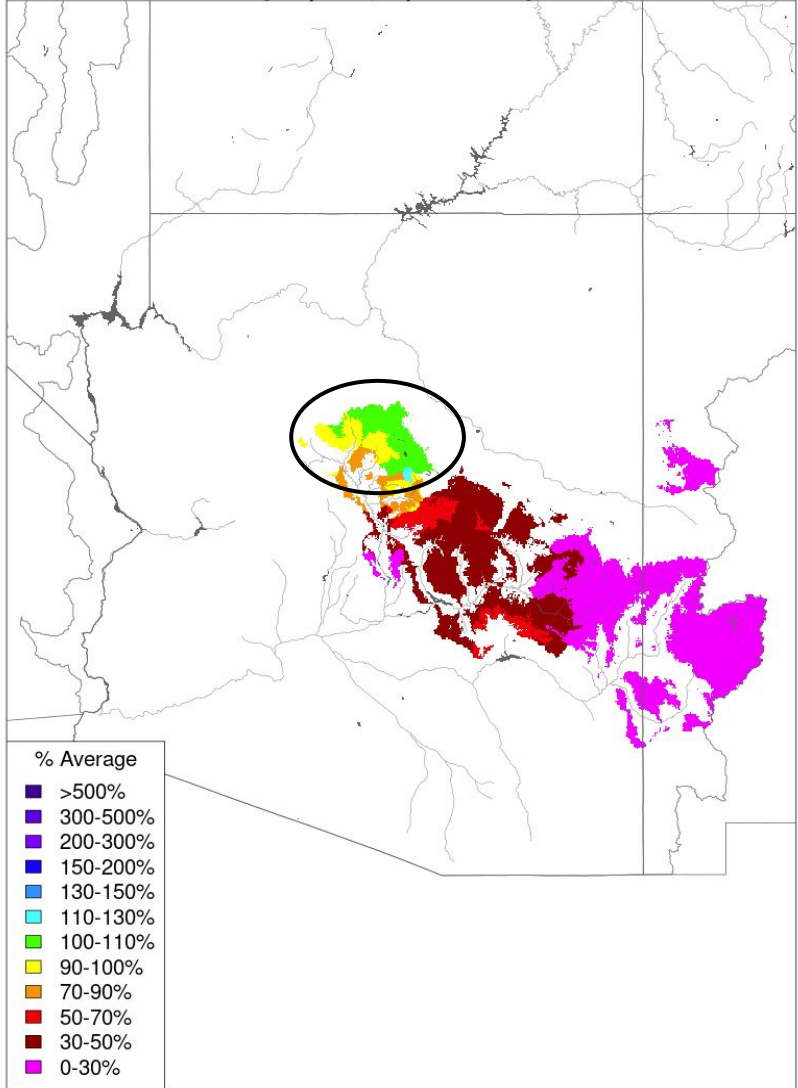


Prepared by NOAA, Colorado Basin River Forecast Center
Salt Lake City, Utah, www.cbrfc.noaa.gov

Lower Colorado

Month to Date Precipitation - March 24 2021

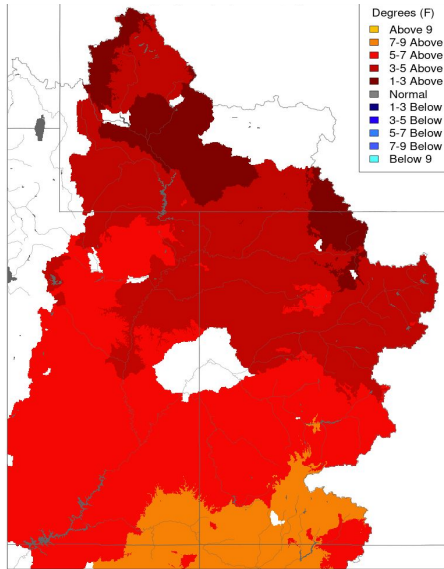
Averaged by Basin, Major Contributing Areas



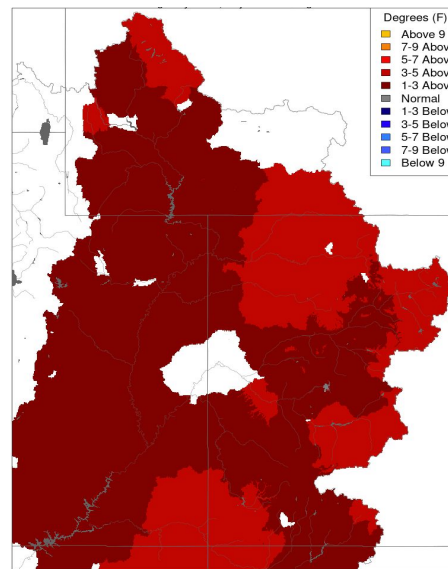
Prepared by NOAA, Colorado Basin River Forecast Center
Salt Lake City, Utah, www.cbrfc.noaa.gov

Water Year Monthly Temperature Anomaly

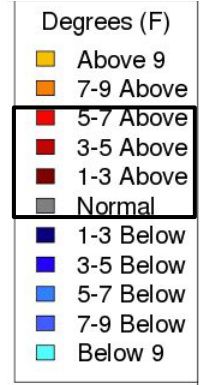
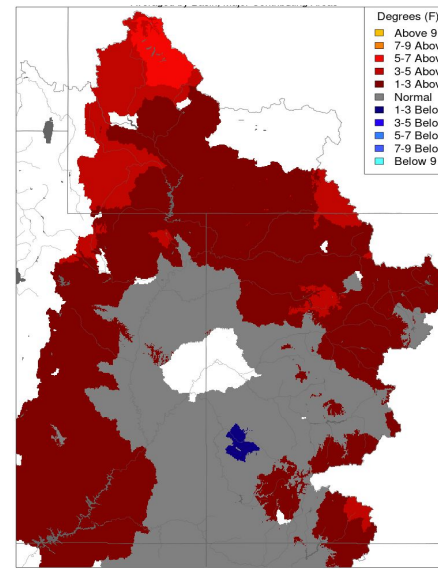
October



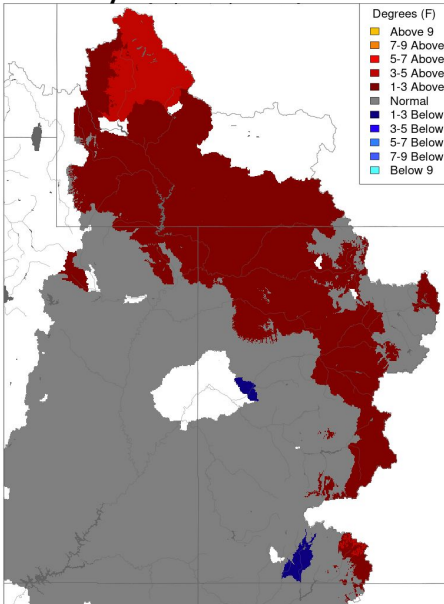
November



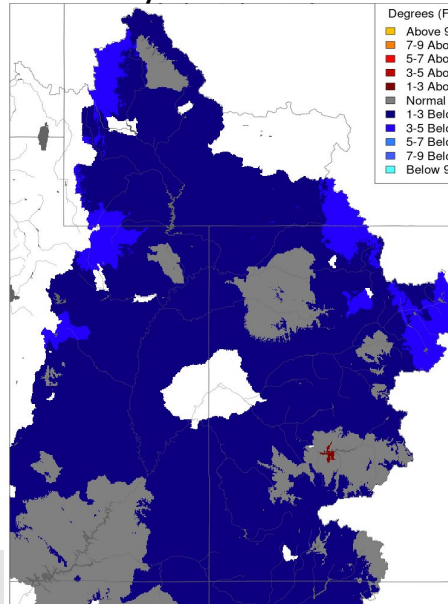
December



January



February

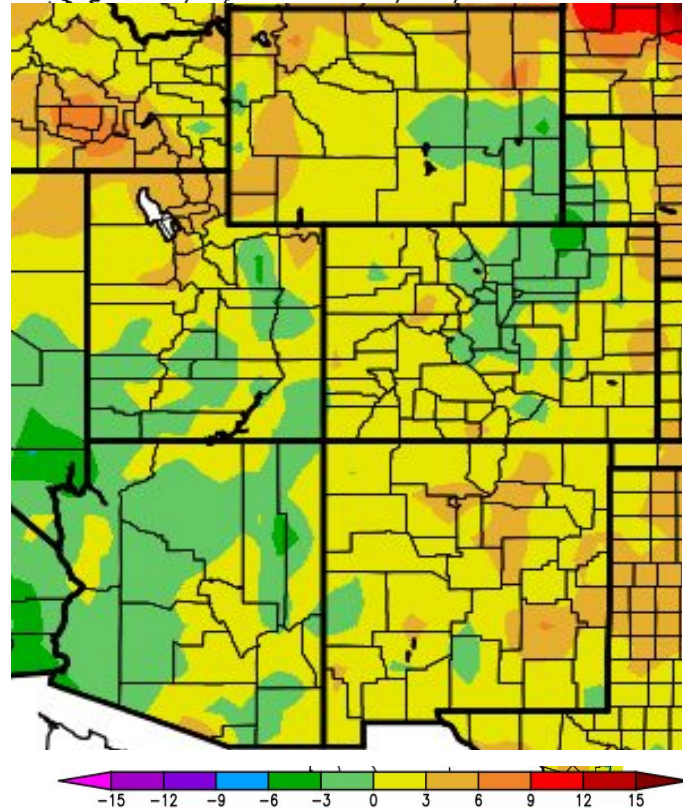


Temperatures were generally near to above normal through February this water year, with the exception of February.

March Temperatures

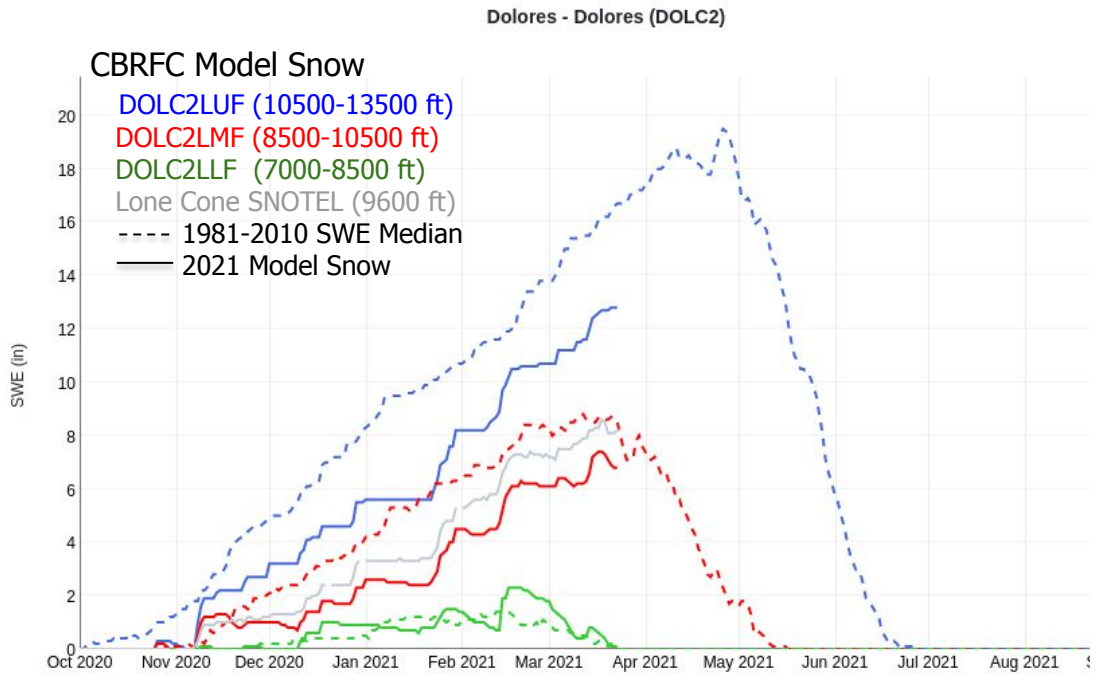
~0-3 degrees above average over most of the Upper Colorado so far this month.

Av. Max. Temperature dep from Ave (deg F)
3/1/2021 - 3/22/2021



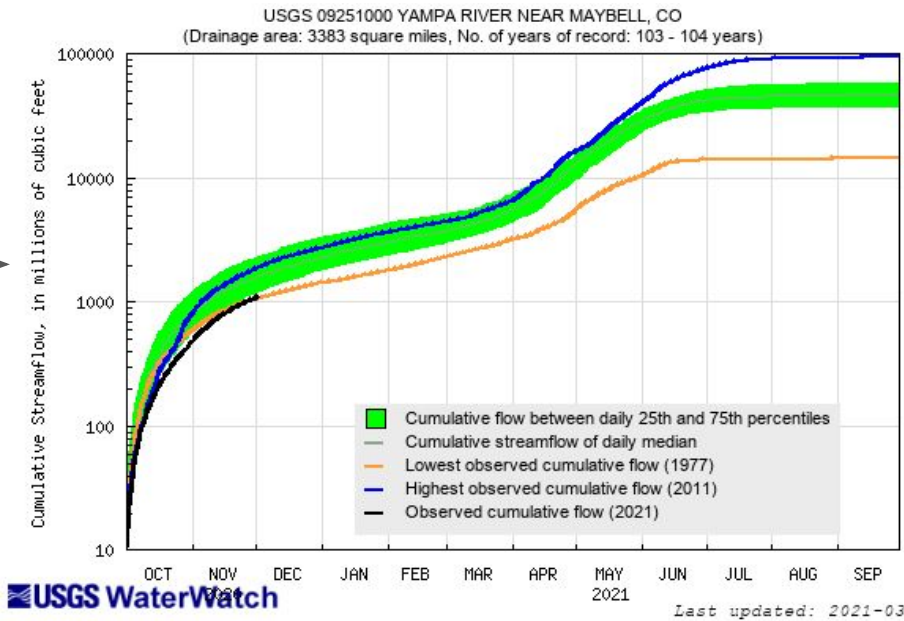
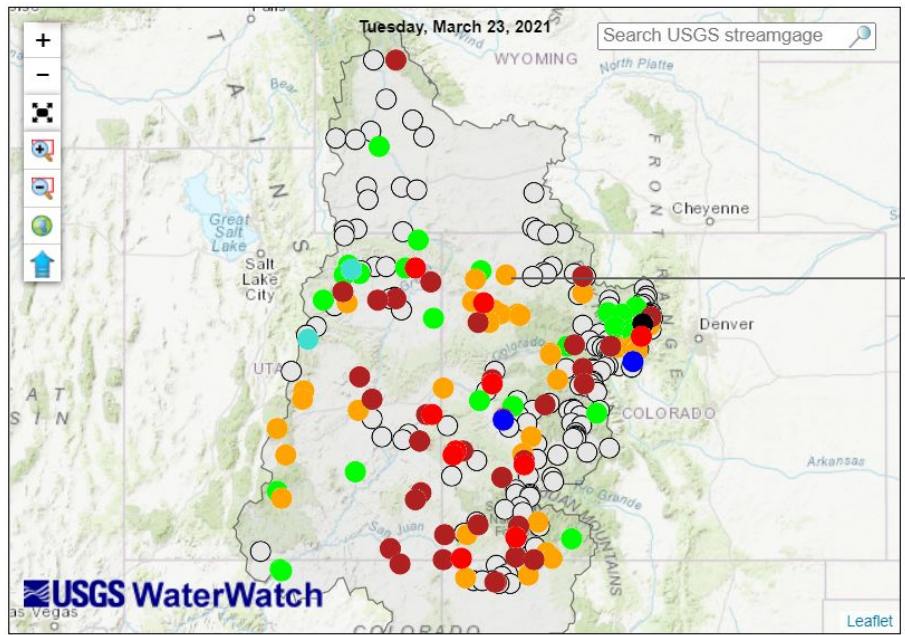
Generated 3/23/2021 at WRCC using provisional data.
NOAA Regional Climate Centers

Have begun to see some snowmelt in lower elevations, but not anything too extreme or out of the ordinary.



March Streamflow

Map of 7-day average streamflow compared to historical streamflow for the day of the year



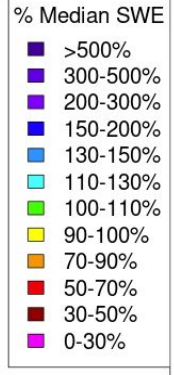
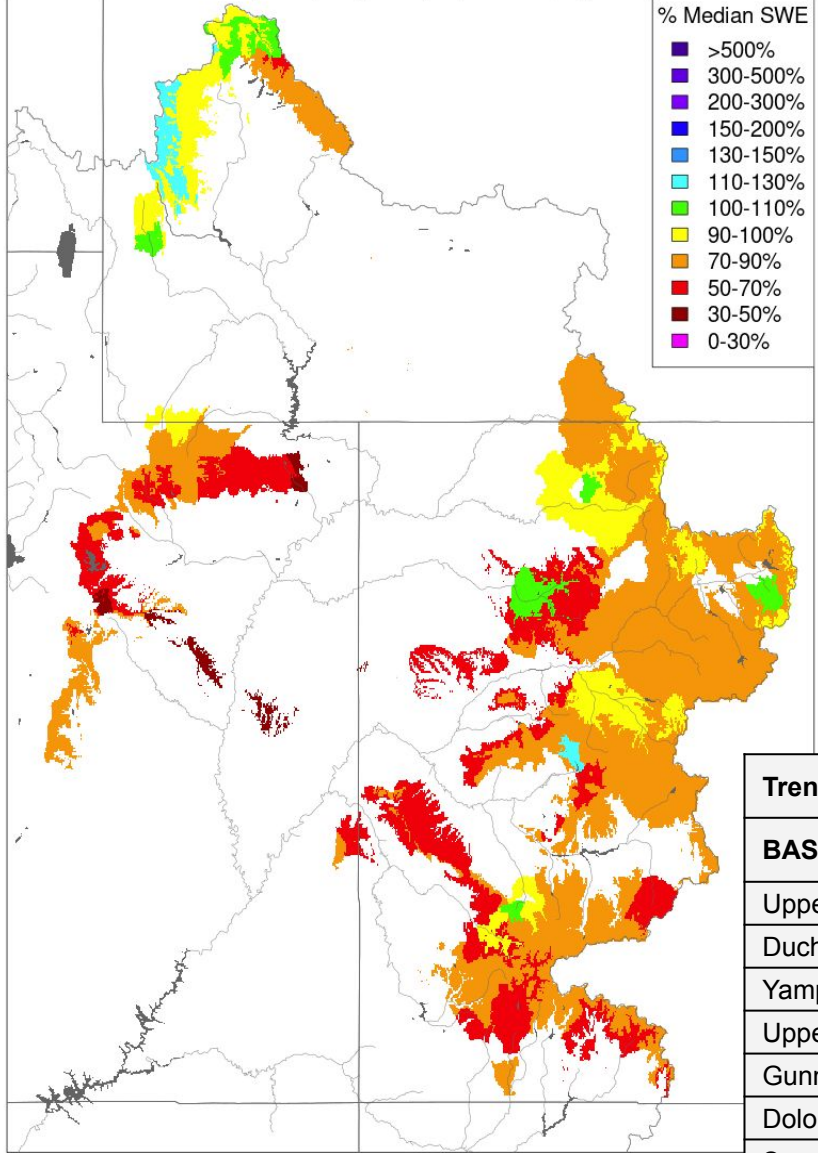
Last updated: 2021-03-24

Explanation - Percentile classes							
●	●	●	●	●	●	●	○
Low	<10 Much below normal	10-24 Below normal	25-75 Normal	76-90 Above normal	>90 Much above normal	High	Not-ranked

Snow Conditions: CBRFC Model Snow

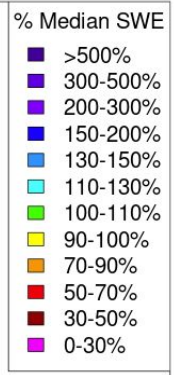
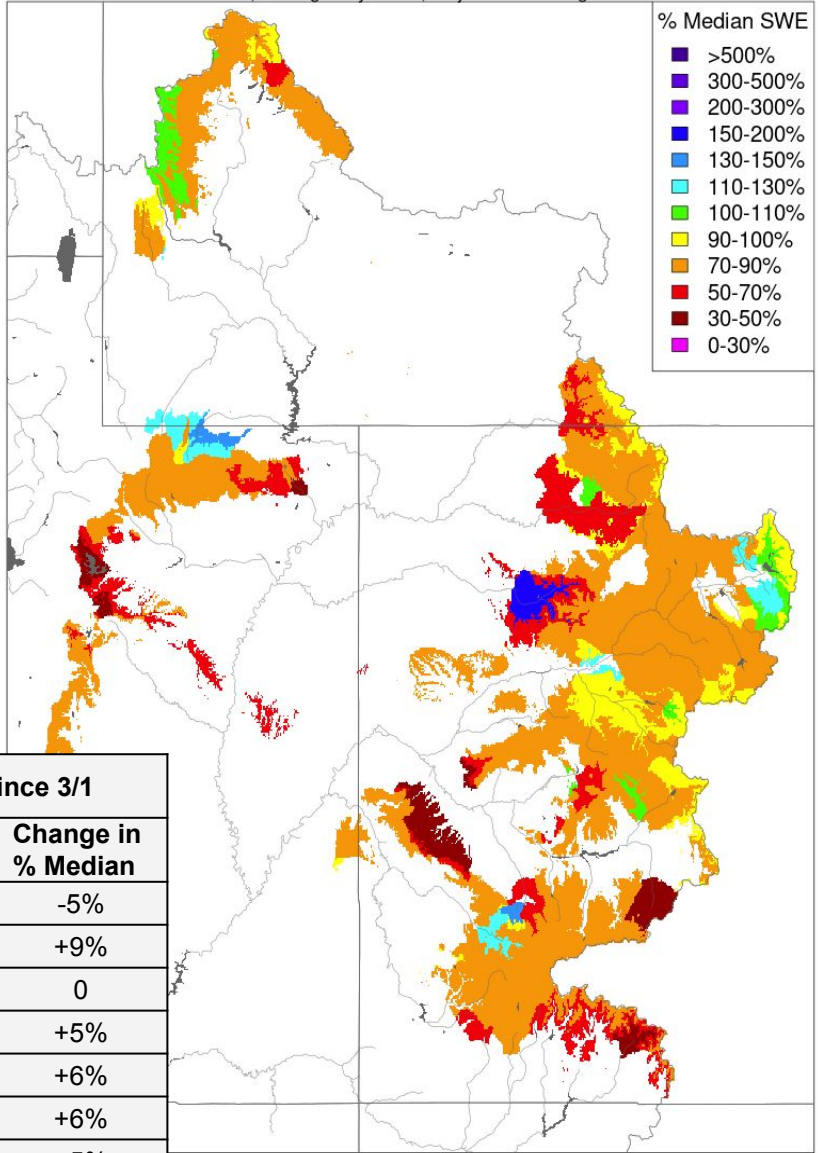
Snow Conditions - March 01 2021

Modeled, Averaged by Basin, Major Contributing Areas



Snow Conditions - March 23 2021

Modeled, Averaged by Basin, Major Contributing Areas

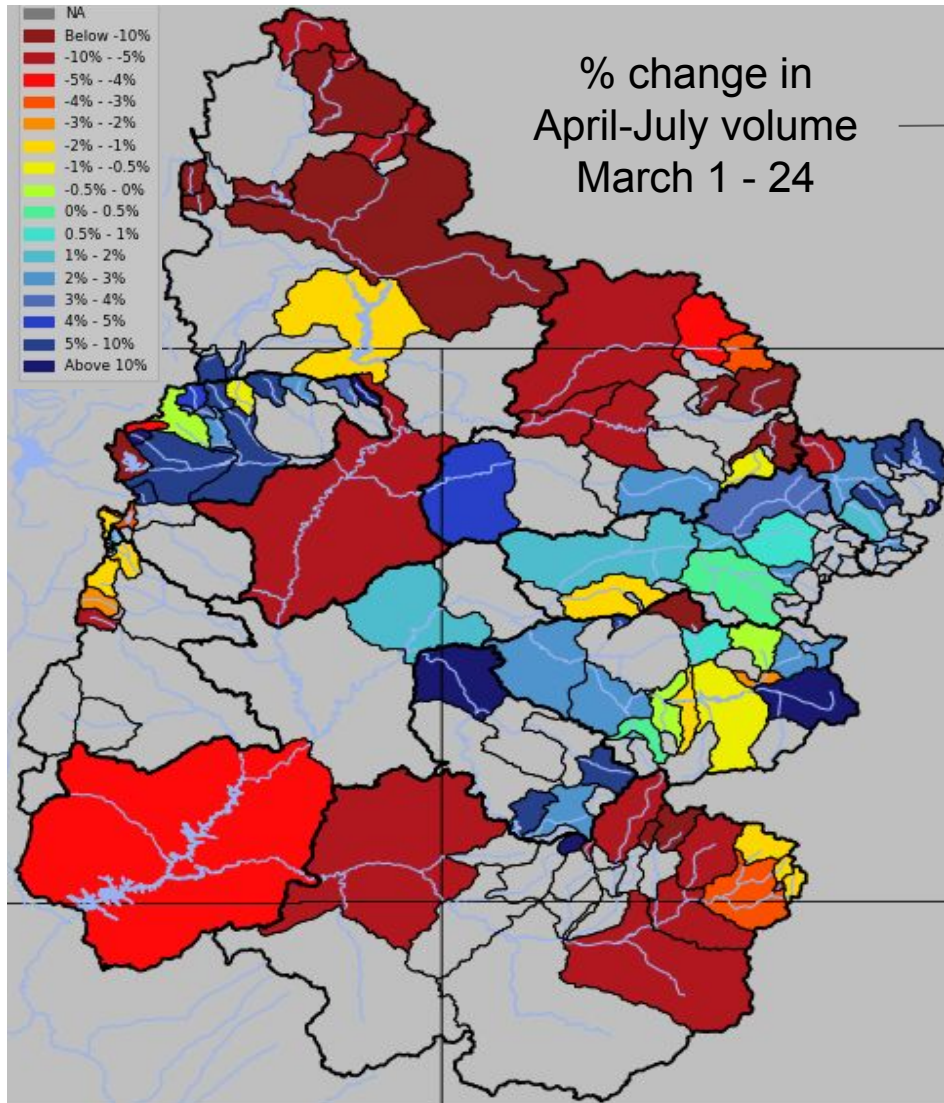


Trend in SWE since 3/1	
BASIN	Change in % Median
Upper Green	-5%
Duchesne	+9%
Yampa/White	0
Upper Col	+5%
Gunnison	+6%
Dolores	+6%
San Juan	+5%
Lake Powell	+4%

Prepared by NOAA, Colorado Basin River Forecast Center
Salt Lake City, Utah, www.cbrfc.noaa.gov

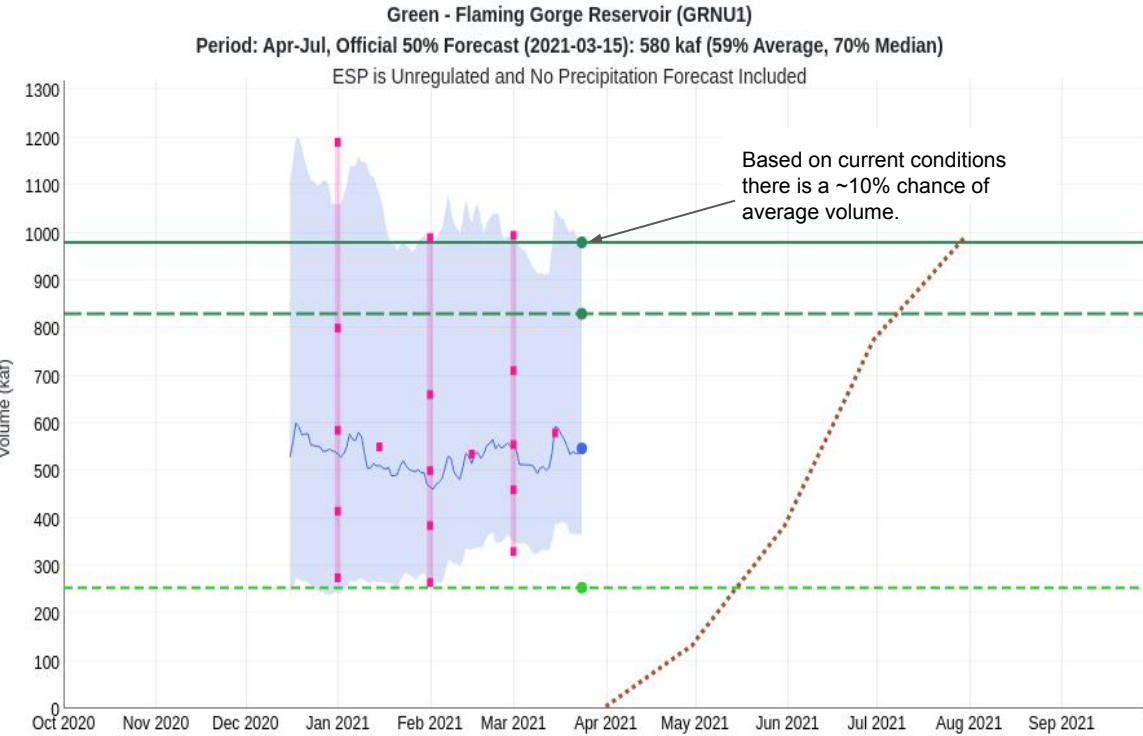
Prepared by NOAA, Colorado Basin River Forecast Center
Salt Lake City, Utah, www.cbrfc.noaa.gov

Trend in Raw Model Guidance: March 1-24



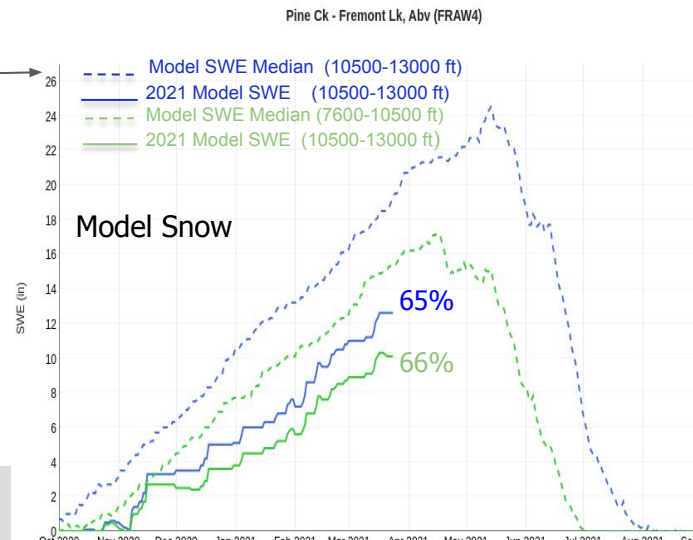
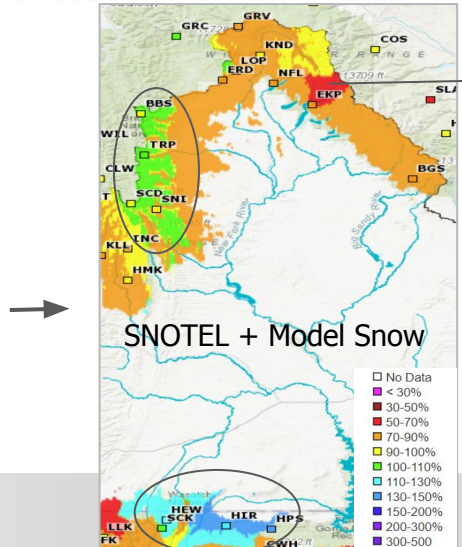
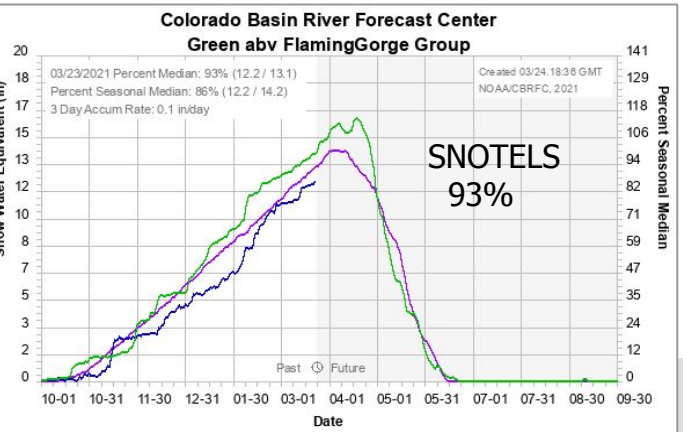
Does not mean official forecasts will increase/decrease this much. Official forecasts include basin forecaster discretion/knowledge.

Forecast Evolution Plot – Flaming Gorge Inflow



2021/03/24:
 Min 1977: 254.3
 Average: 980
 Median: 830
 ESP: 547

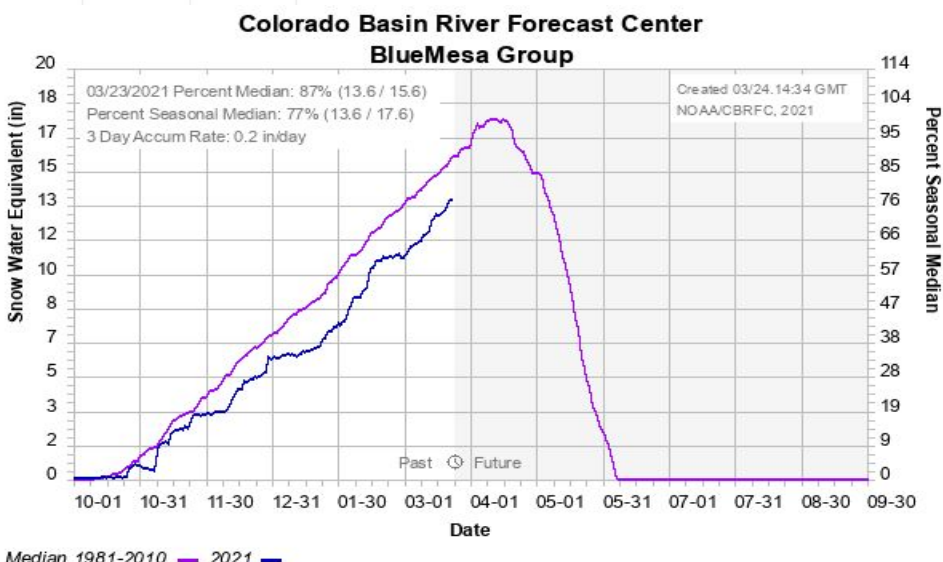
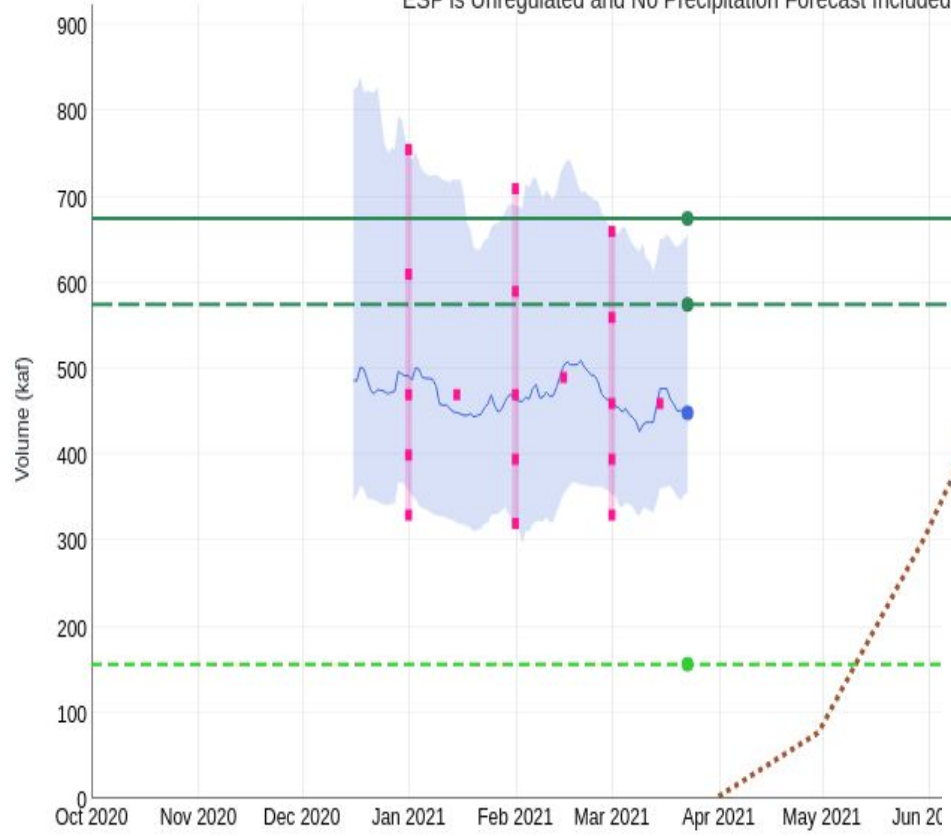
Snow conditions near average as a whole, but not evenly distributed. Wind River Range is an important runoff source and snowpack is below normal in that area.



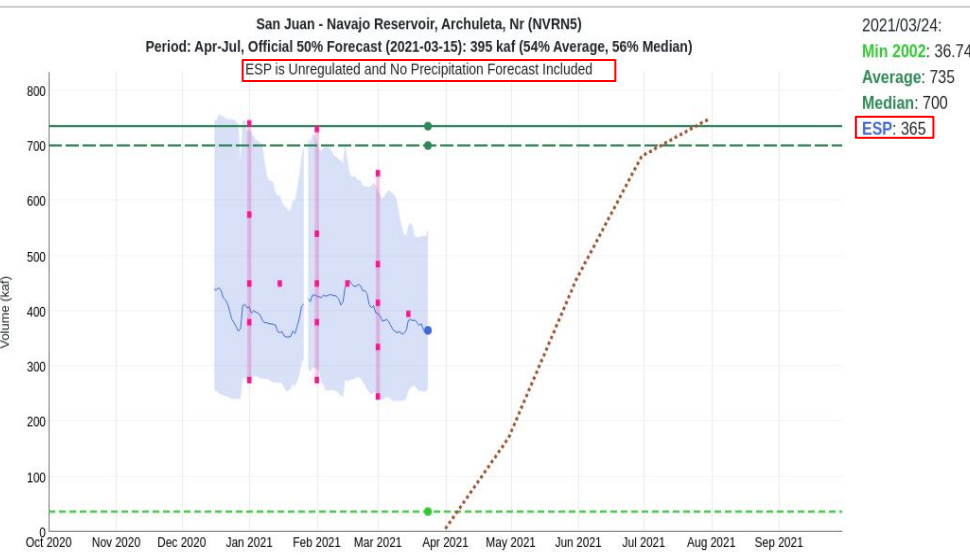
Forecast Evolution Plot – Blue Mesa Inflow

Gunnison - Blue Mesa Reservoir (BMDC2)
 Period: Apr-Jul, Official 50% Forecast (2021-03-15): 460 kaf (68% Average, 80% Median)
 ESP is Unregulated and No Precipitation Forecast Included

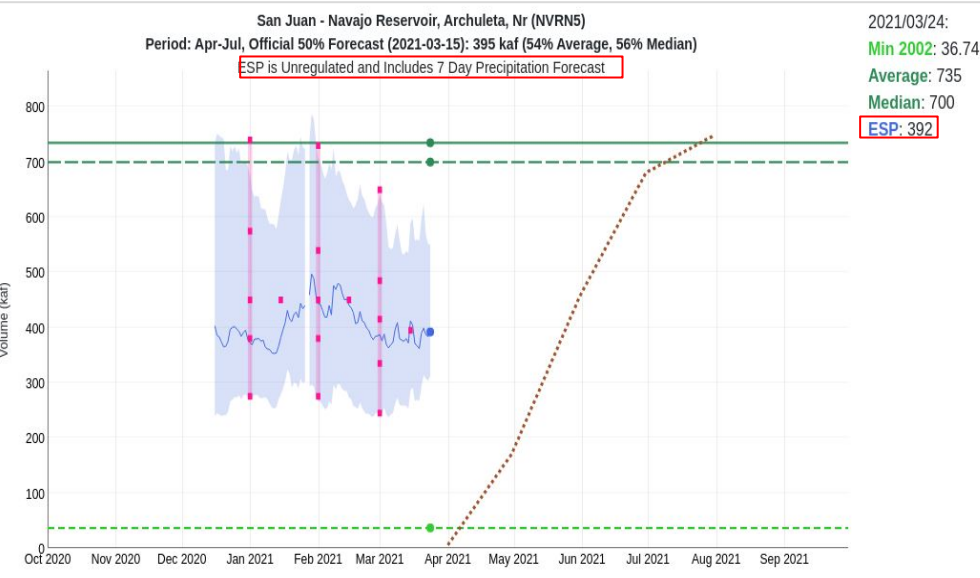
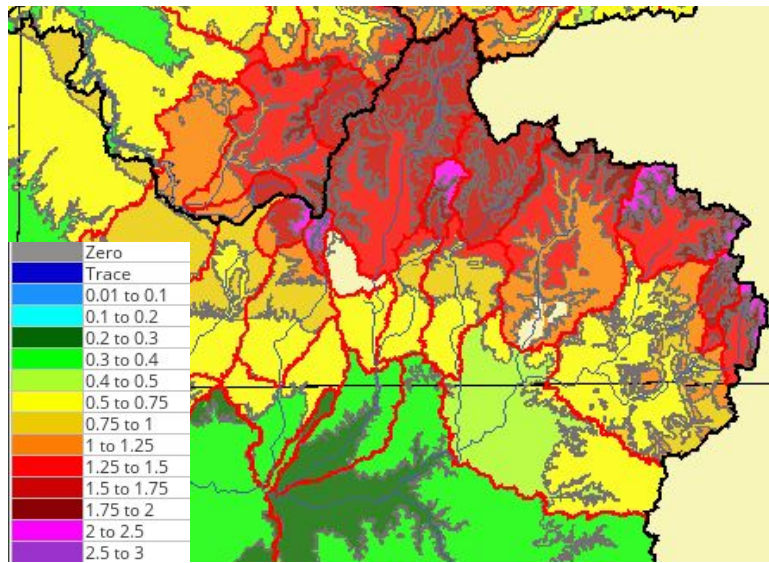
2021/03/23:
 Min 2002: 156.55
 Average: 675
 Median: 575
 ESP: 449



Forecast Evolution Plot – Navajo Inflow

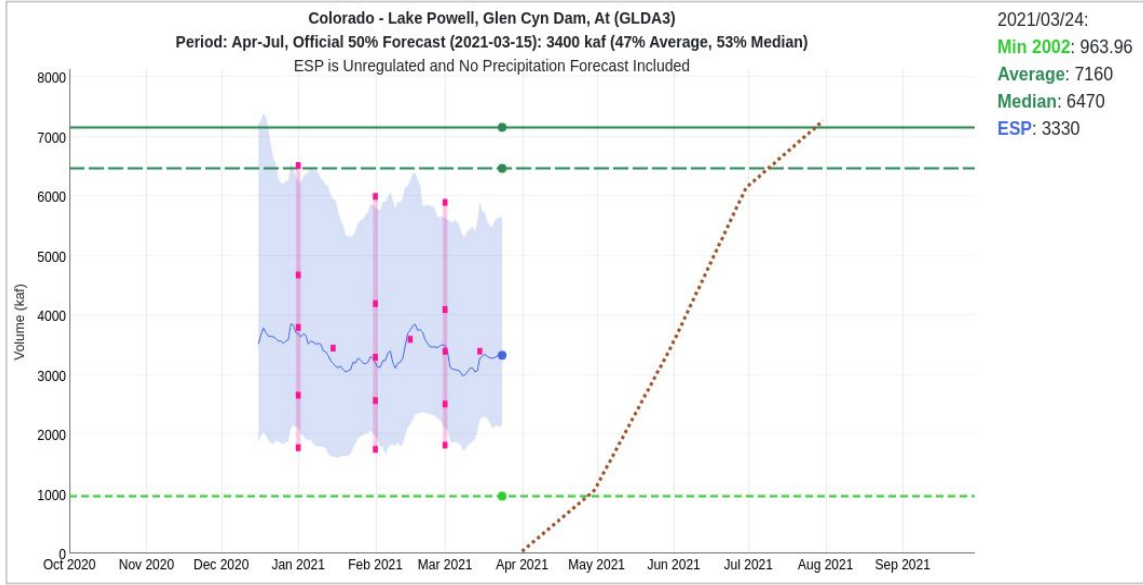


San Juan 7 Day Forecast Precipitation (inches): 3/24

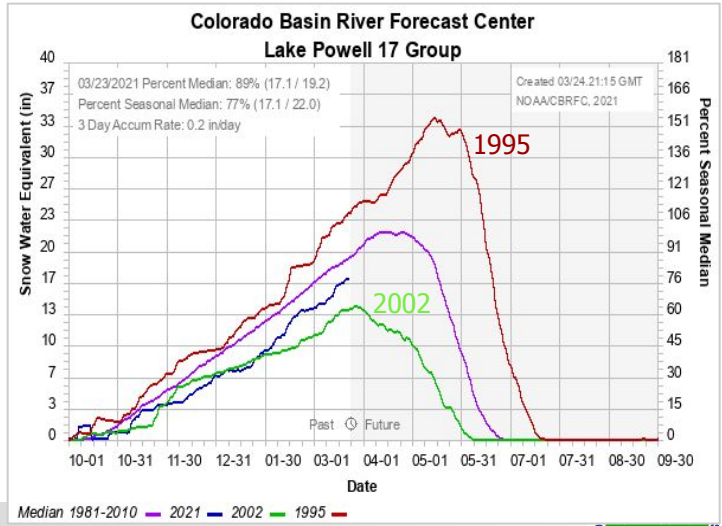
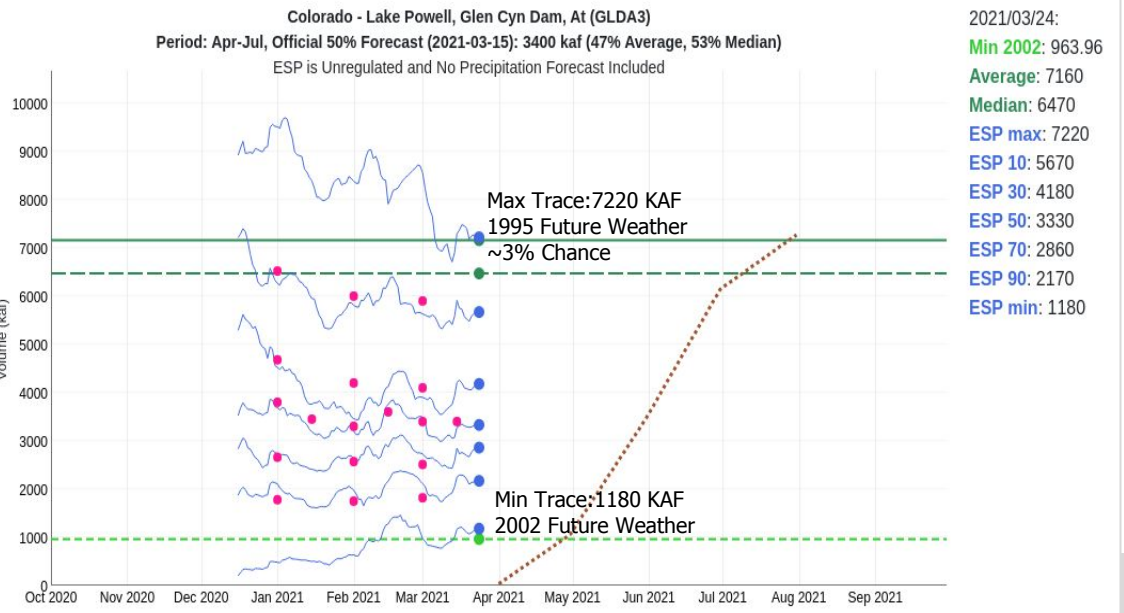


- 3/1 Forecast: 415 KAF/56%
- 3/15 Forecast: 395 KAF/54%
- 3/23 ESP No Precip: 365 KAF/50%
- 3/23 ESP 7 Day Precip: 392 KAF/53%

Forecast Evolution Plot – Lake Powell

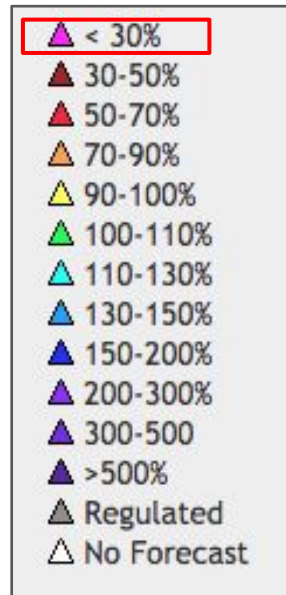
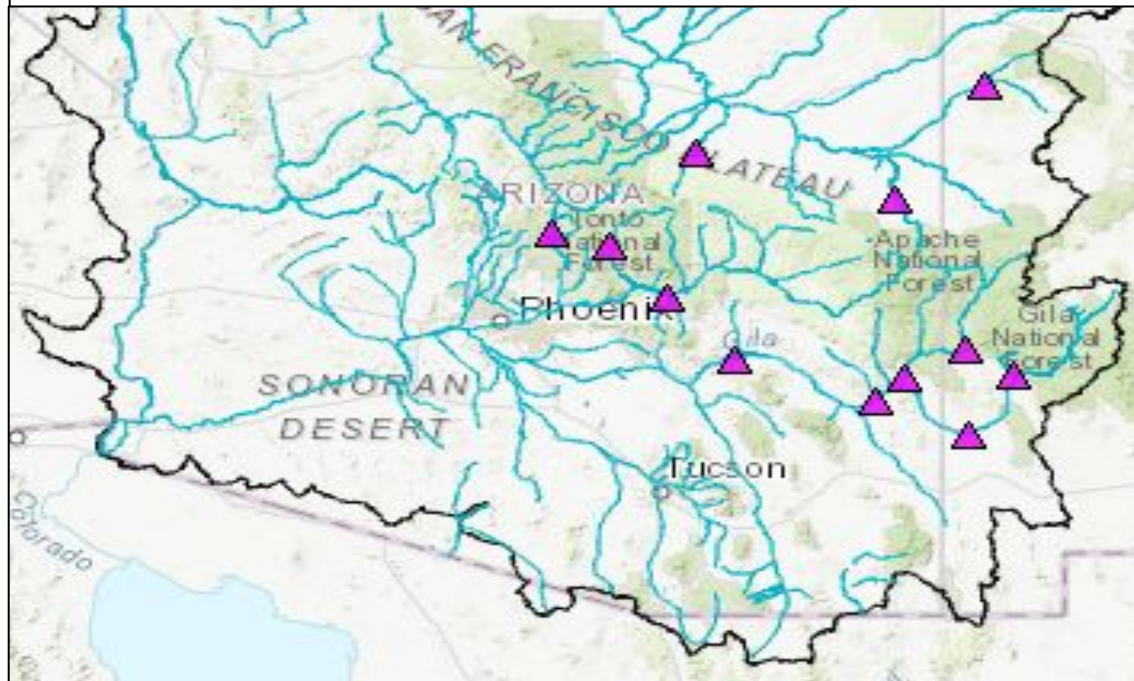


Probability Traces

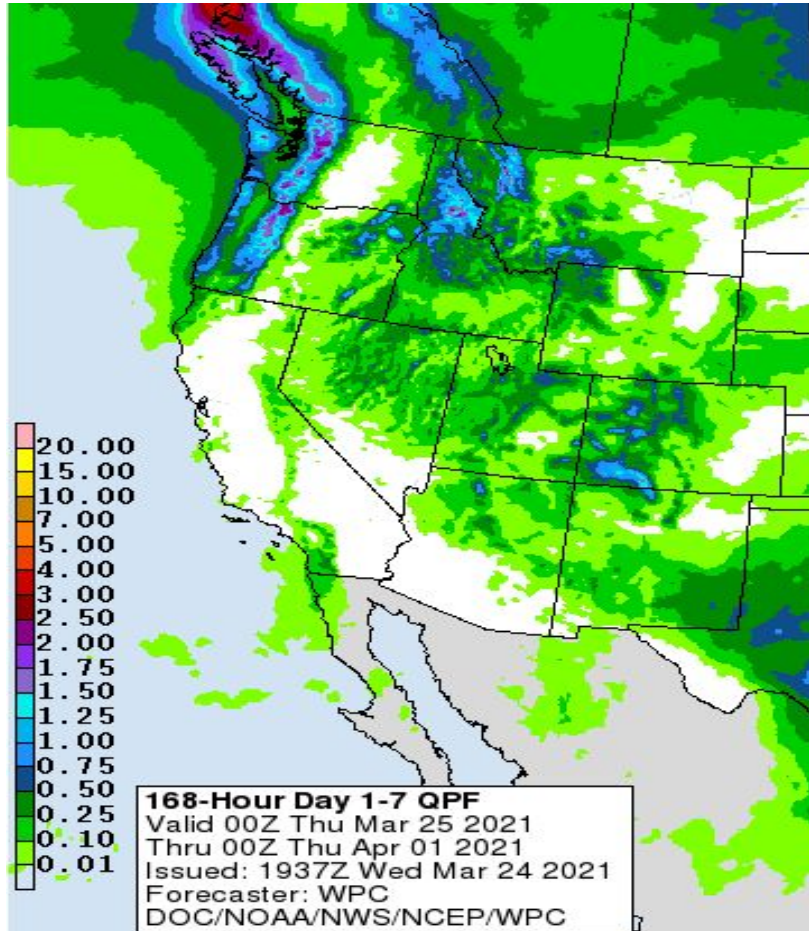


Lower Colorado River Water Supply

Gila/Salt/Verde/Little Colorado River Basins January – May Forecast Volume (Latest ESP % Median)

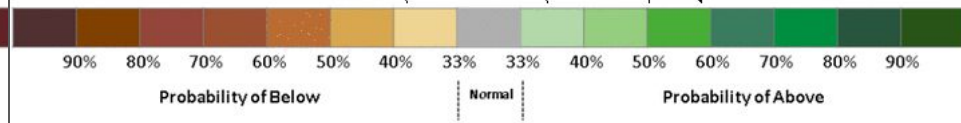
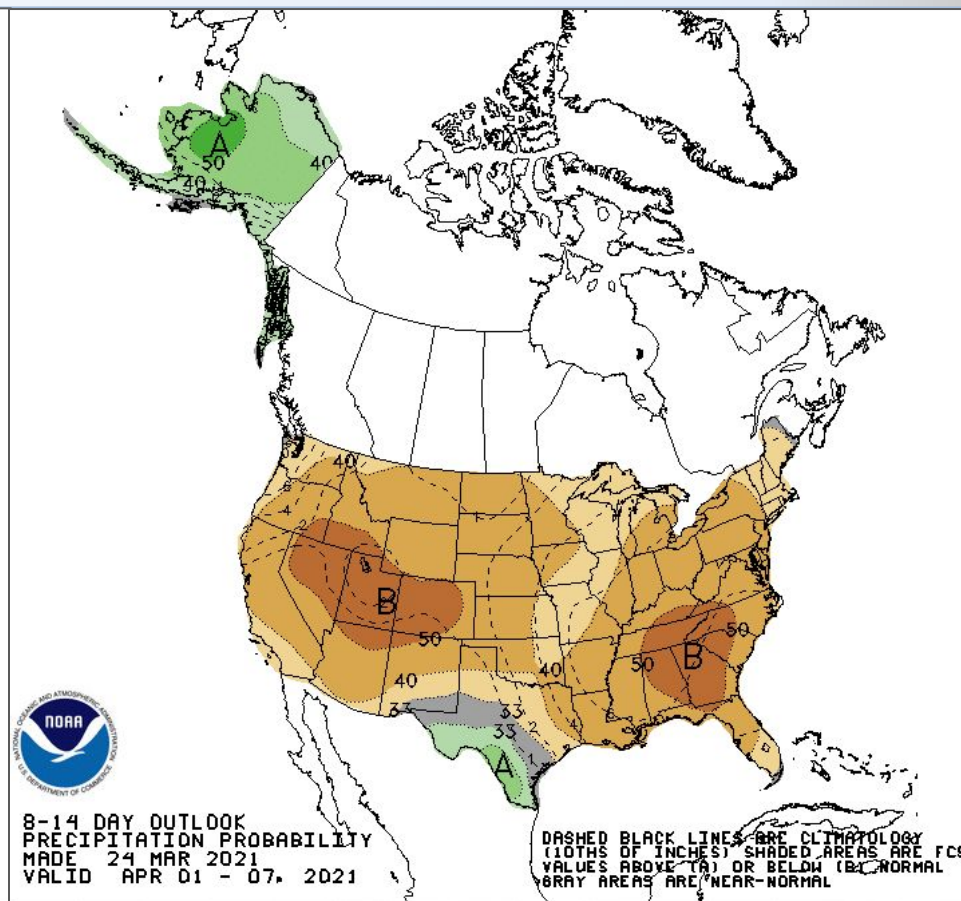
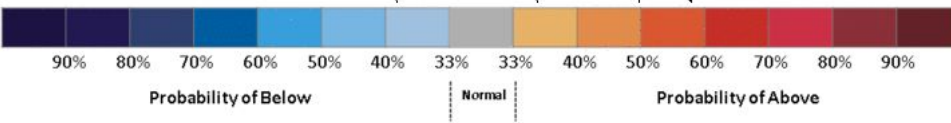
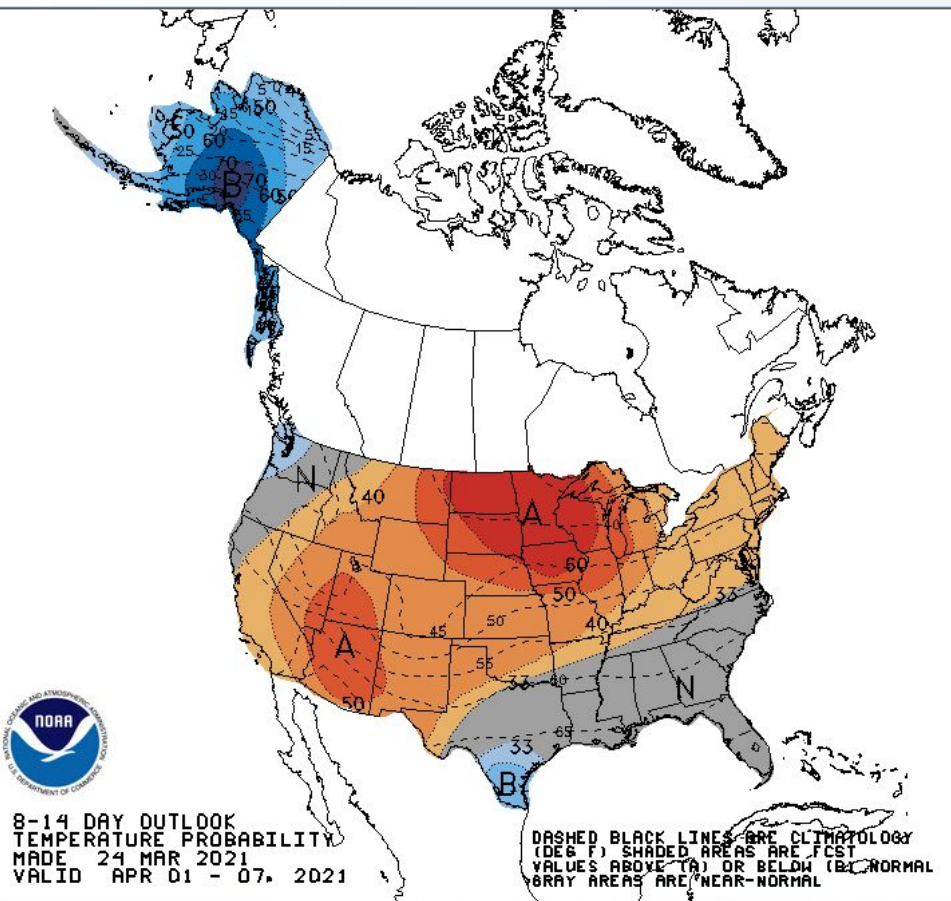


Upcoming Weather: WPC Outlook March 25-Apr 1



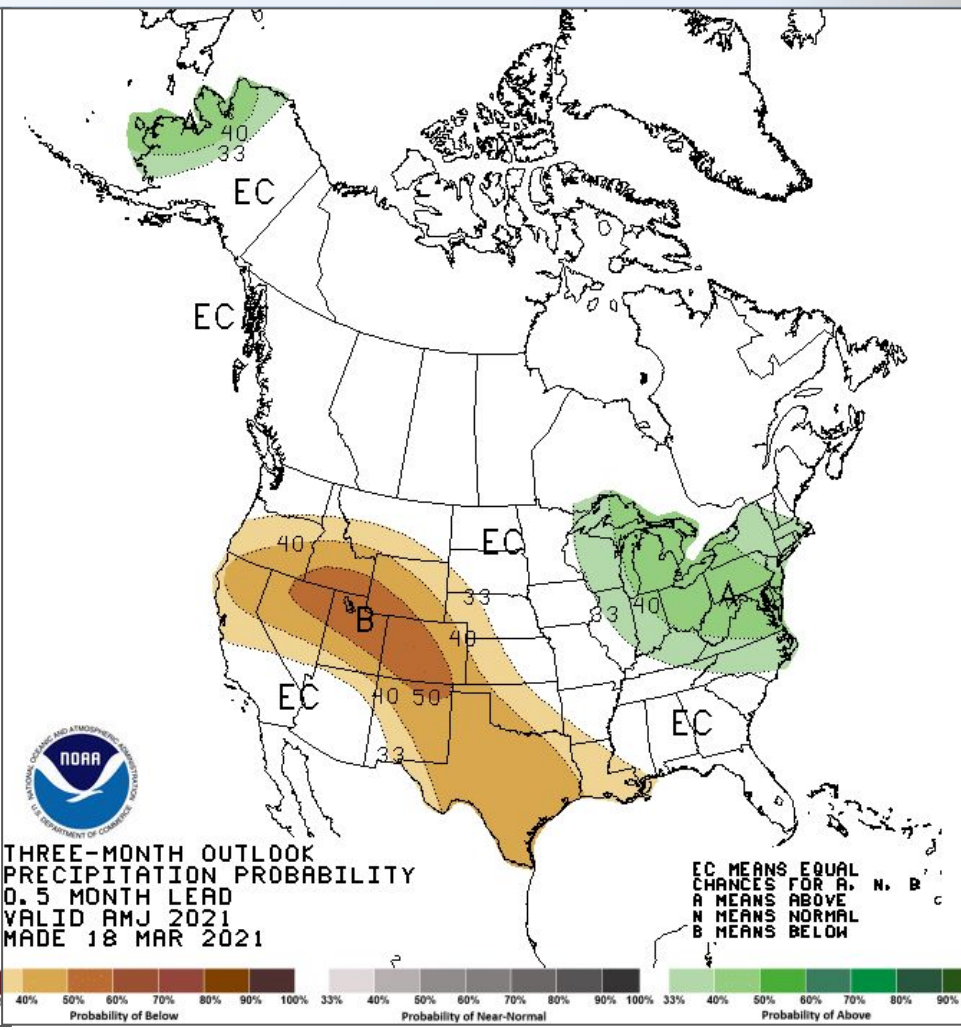
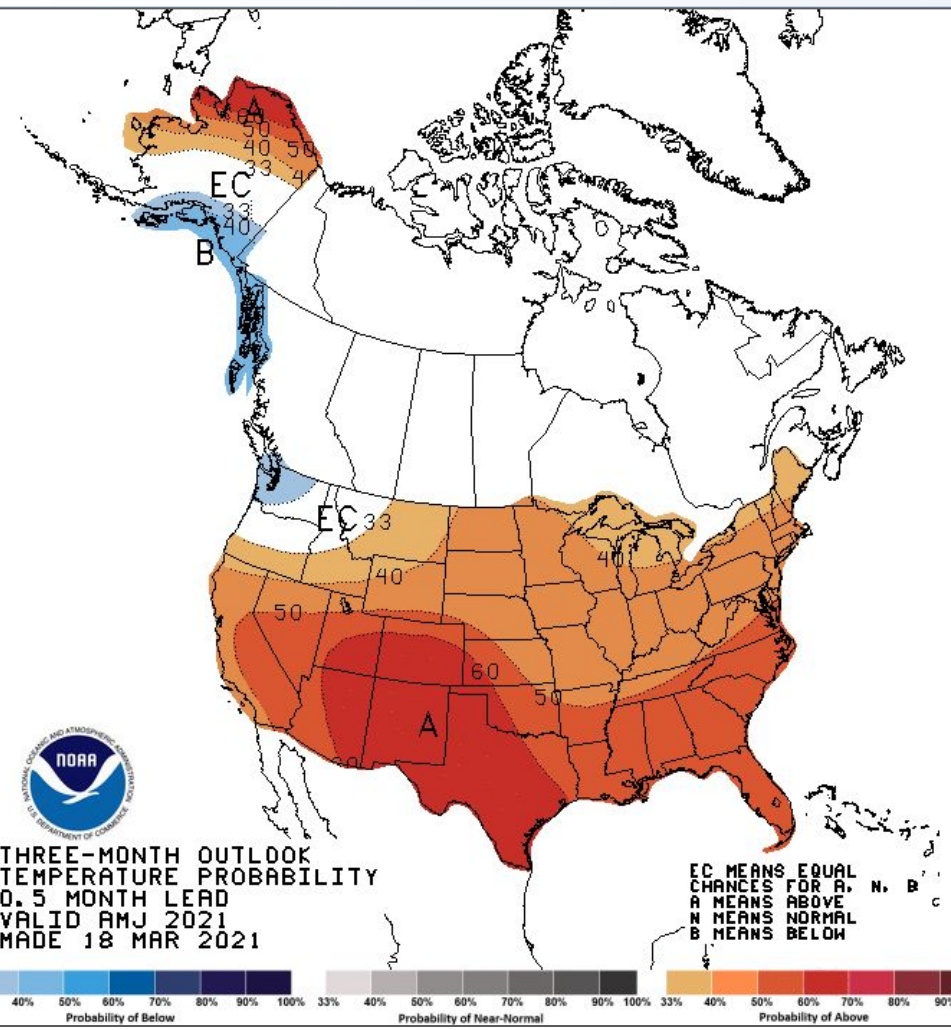
- Another trough will impact the region over the next two days with a reinforcing shot of cool temperatures and widespread precipitation. Highest amounts of 0.5-1.5 inches are forecasted to be over the mountains of Colorado (especially the San Juans).
- A brief warmup occurs on Sunday into Monday (Mar 28-29), followed by a cold front on next Tuesday into Wednesday. Modest precipitation amounts will be possible with this system across the north.
- Overall, March will be near normal for temperatures. Precipitation will be a mixed bag with some areas near to slightly above normal and other areas below normal.

Upcoming Weather: 8-14 day outlook (April 1-7)



Weather models are in general agreement that ridging will return to Intermountain West for the first week of April, bringing elevated chance of above normal temperatures and below normal precipitation.

CPC Seasonal Outlook for April-June



CPC seasonal outlook for the rest of spring (April-June) has the highest odds of below normal precipitation centered right over the Upper Basin and Great Basin.

Summary

- April 1 forecasts will likely be similar to the March 1 forecasts in the Gunnison, Dolores, Upper Colorado, and Duchesne.
- April 1 forecasts will likely decrease in the Upper Green and Yampa.
- April 1 forecasts will either decrease or be similar to mid-month forecasts in the San Juan depending on the precipitation over the next week.

- First week of April looks to be warm and dry right now.
 - Any chance of normal runoff continues to decrease.
 - At this point, we will need major weather pattern change to see any major improvements in water supply.