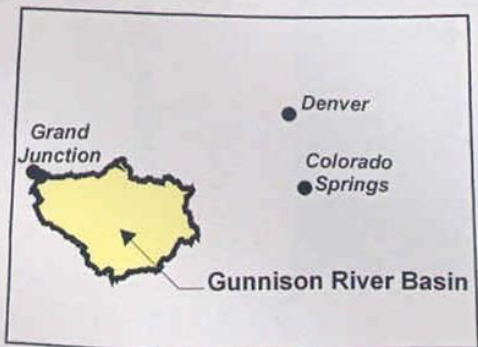


Endangered Fish Designated Critical Habitat



Location Map (State of Colorado)

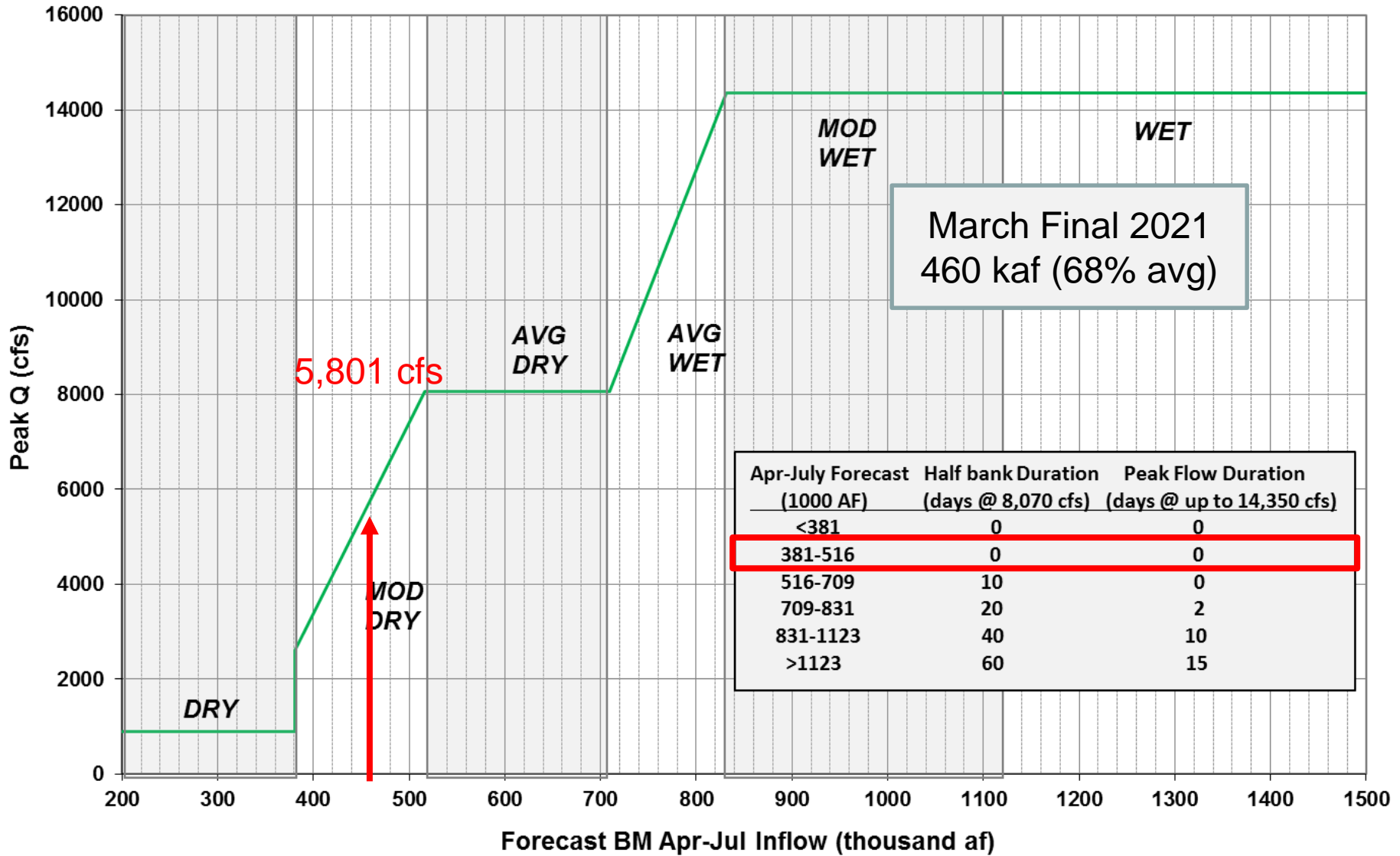
Figure 1. Gunnison River Basin

Aspinall Unit

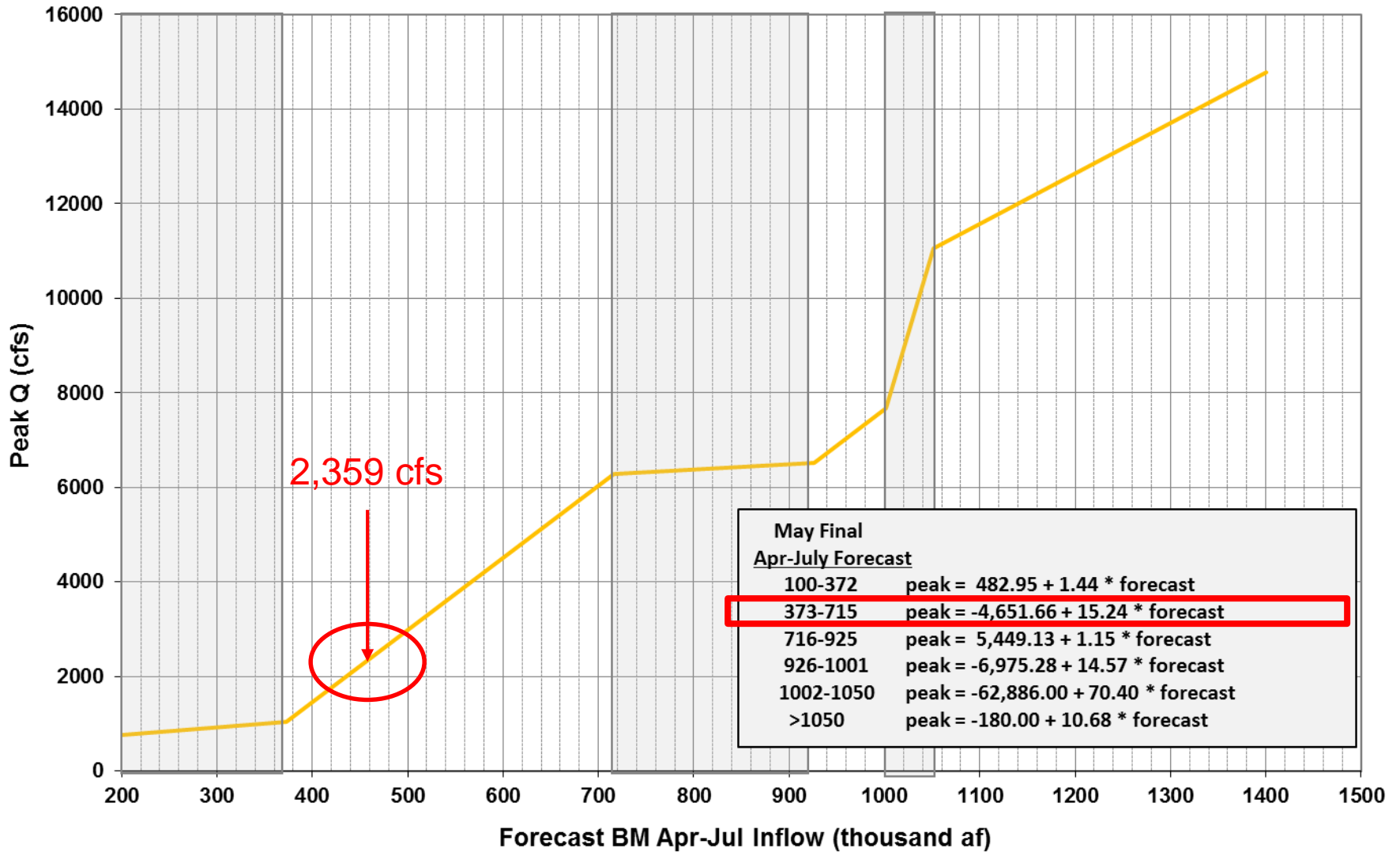
Seasonal Operation Goals

- Fill Blue Mesa Reservoir before end of runoff.
- Operate to the 2012 Aspinall ROD at the Whitewater Gage.
- Meet the NPS Black Canyon water right peak flow.
- Meet all state water right needs on the river downstream.
- Maximize hydropower production.
- Meet Blue Mesa Reservoir End of December ice target of 7490.0 ft
- Meet flood control needs of storing water in Blue Mesa Reservoir and to avoid flooding down river in the town of Delta.
- Adjust river flows for diversion needs through the Gunnison Diversion Tunnel.
- Adjust flows for trout spawning needs in the fall and spring months.

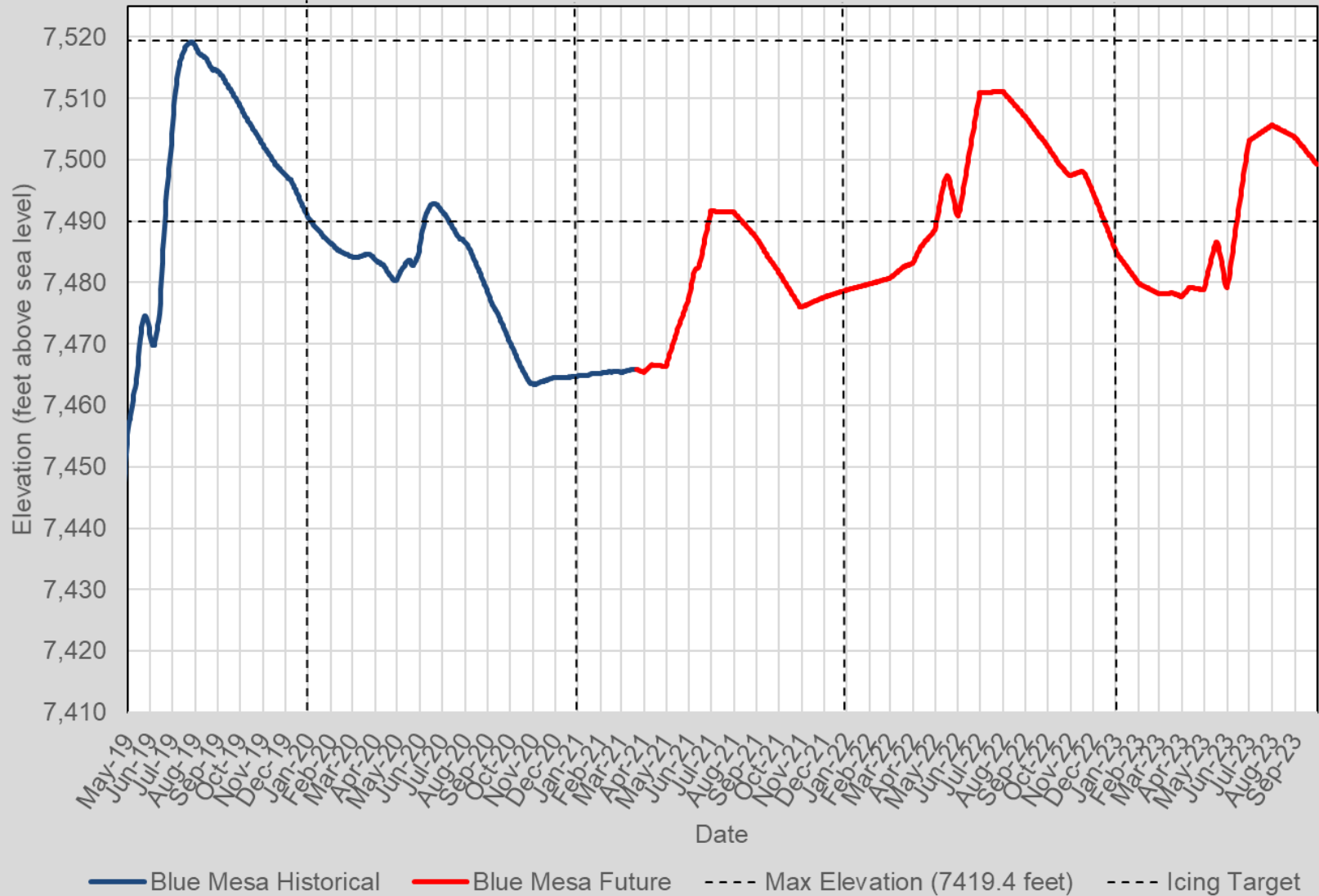
Peak Flow Target at Whitewater



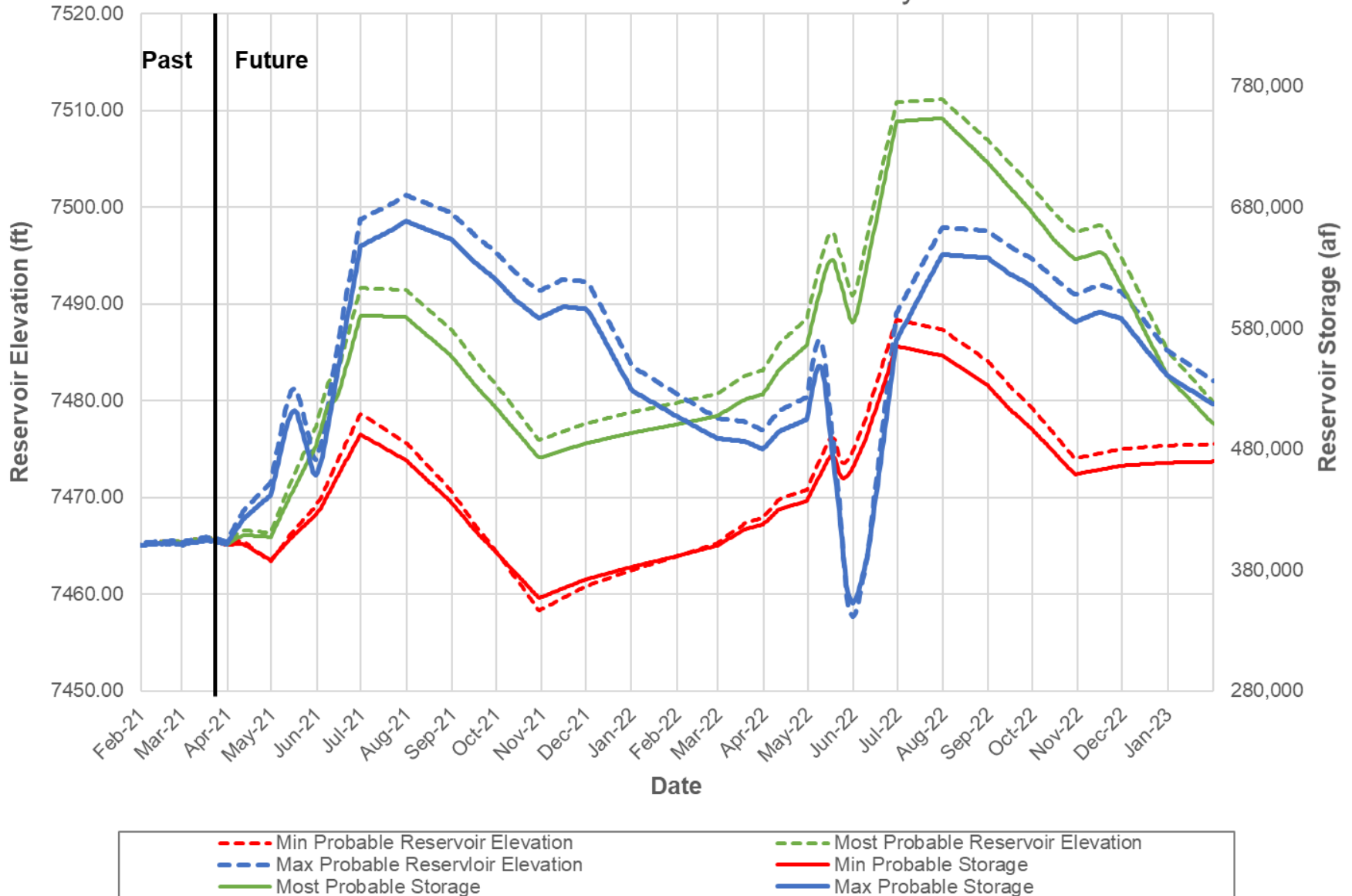
Peak Flow Target at Black Canyon



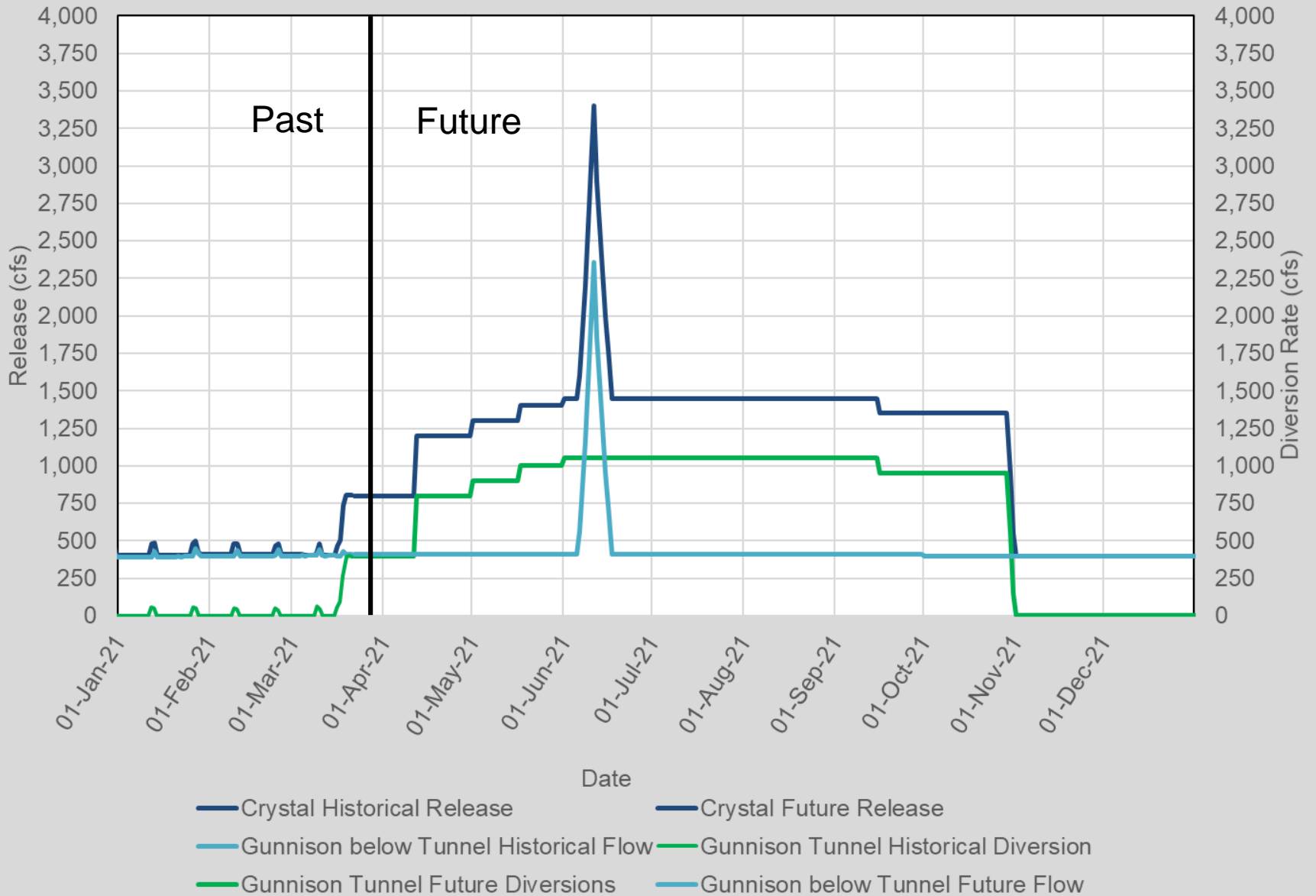
Blue Mesa Elevation / 24-Month Study



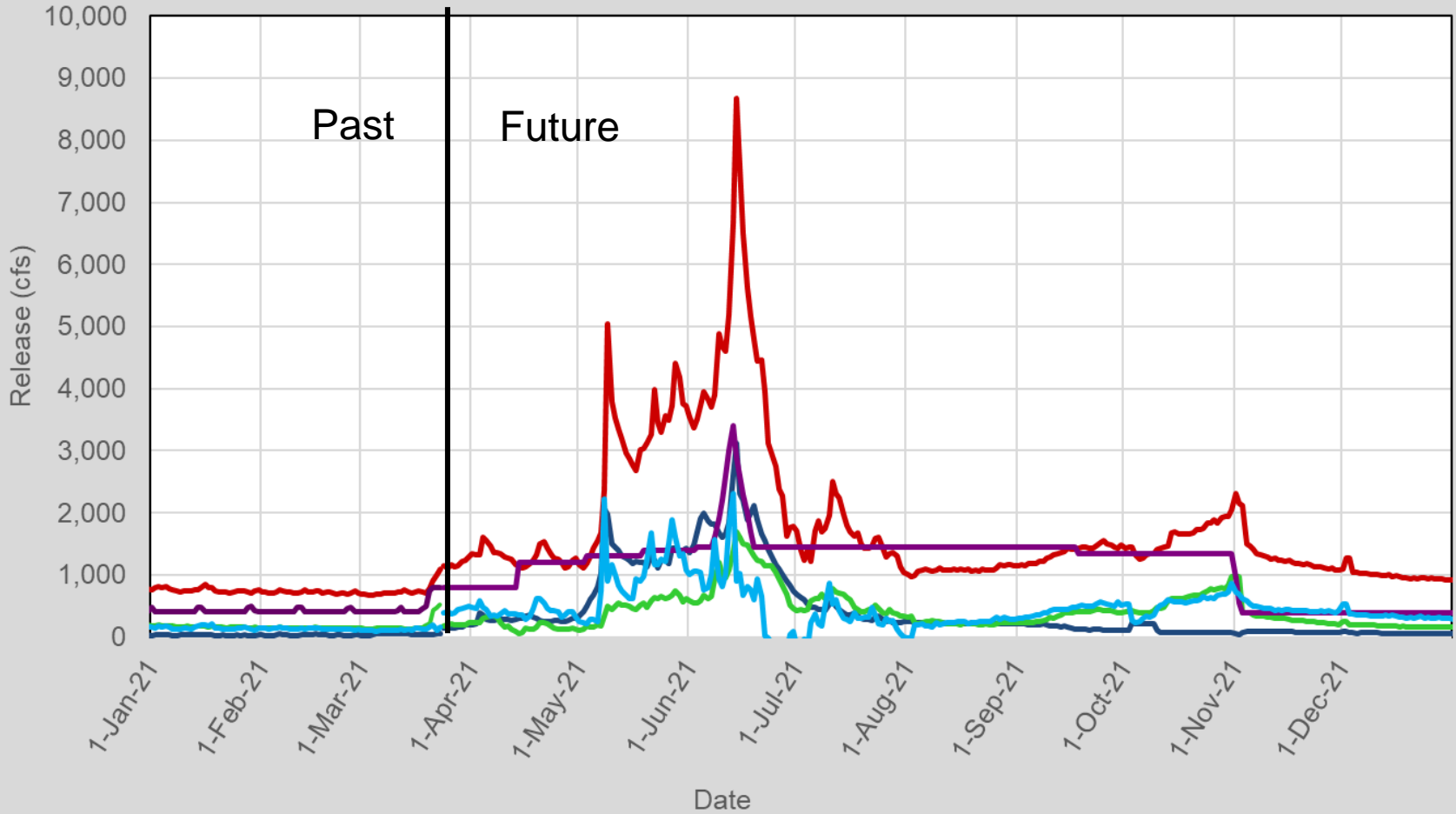
Blue Mesa Forecasted Elevation and Storage as of March 2021 24-Month Study



Crystal and Gunnison Tunnel/ 24-Month Study



Gunnison River / 24-Month Study



- NF at Somerset Historical Flow
- Uncompahgre at Delta Historical Flow
- Gunnison at Whitewater Historical Flow
- Crystal Dam Historical Release
- Unmeasured Gains Historical Flow
- NF at Somerset Future Flow
- Uncompahgre at Delta Future Flow
- Gunnison at Whitewater Future Flow
- Crystal Dam Future Release
- Unmeasured Gains Future Flow