



— BUREAU OF —  
RECLAMATION

# Colorado River Forecasting Service Meeting

## Powell Hydrology and Operations

March 25, 2021

# Drought Operations

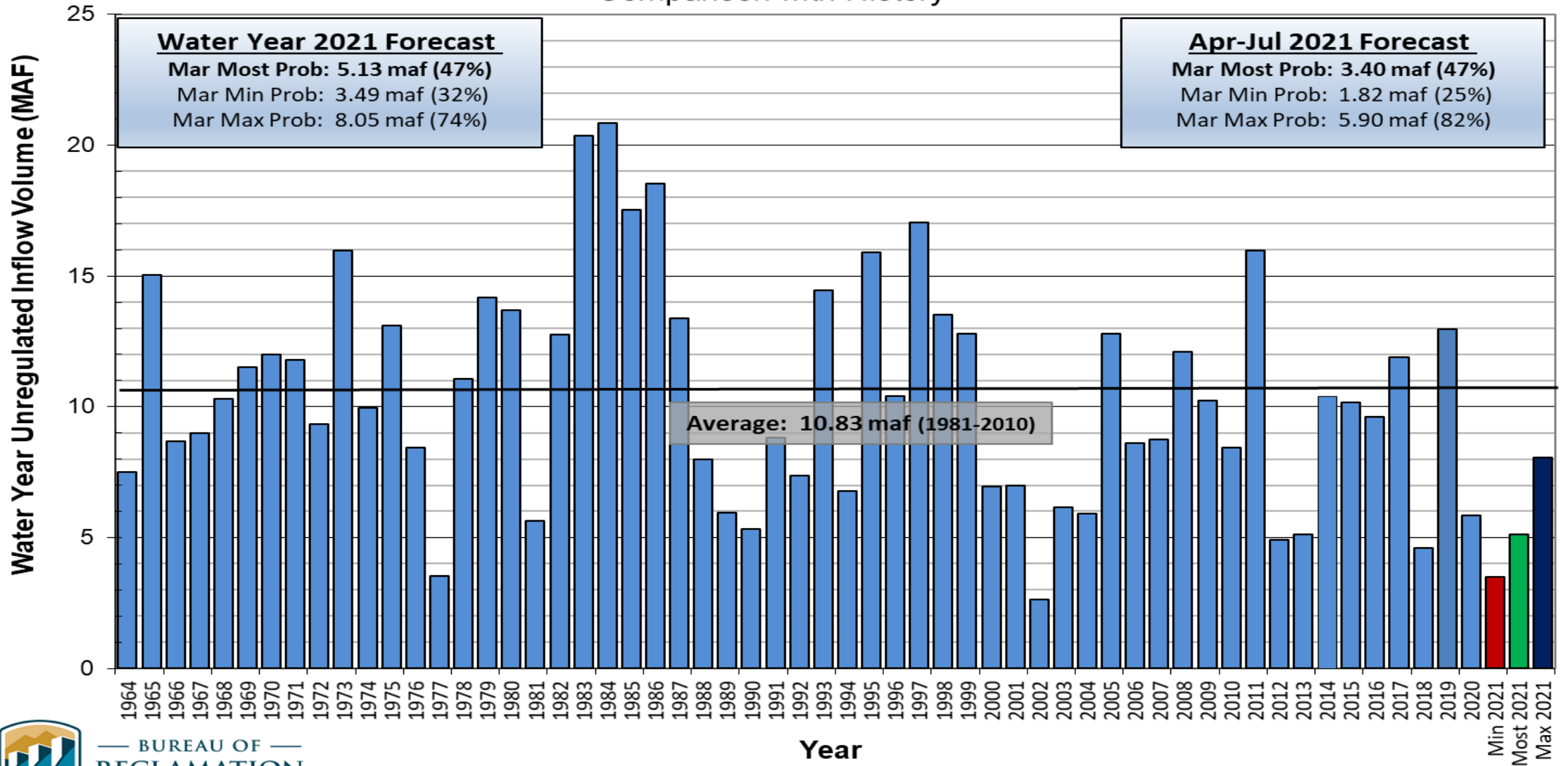
- The January 2021 Minimum Probable 24 Month Study (24-MS) run projected Powell to fall below 3525 feet in 2022.
- The Basin States, UCRC, WAPA, NPS & FWS were notified of these projections.
- Model results *do not* initiate immediate operational changes to Reclamation facilities.
- Model results *do* initiate enhanced monitoring and coordination under the DROA.
- Model results *do* initiate monthly analysis of min/most/max with the parties specified in the DROA.
- The DROA enhanced monitoring and coordination will continue until either:
  - (i) The minimum probable projected elevation remains above 3525' for 24 months; or
  - (ii) the process moves to the next step when the Most Probable 24-MS projects Powell elevations below 3,525 feet and a specific Drought Response Operations Plan is developed. (Section II.A.4.b)



# Lake Powell Unregulated Inflow

## Water Year 2021 Forecast *(issued March 2)*

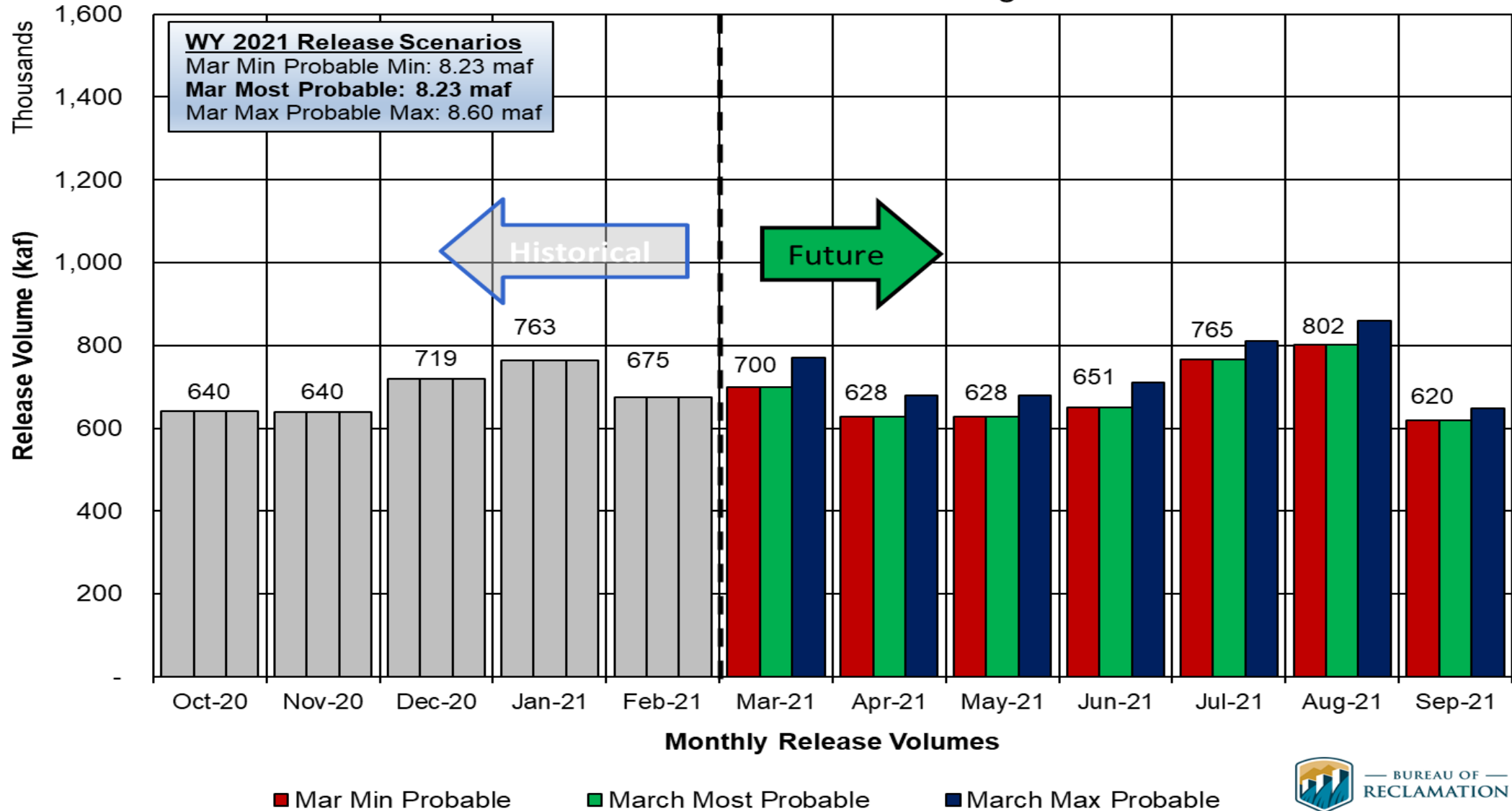
### Comparison with History



BUREAU OF RECLAMATION

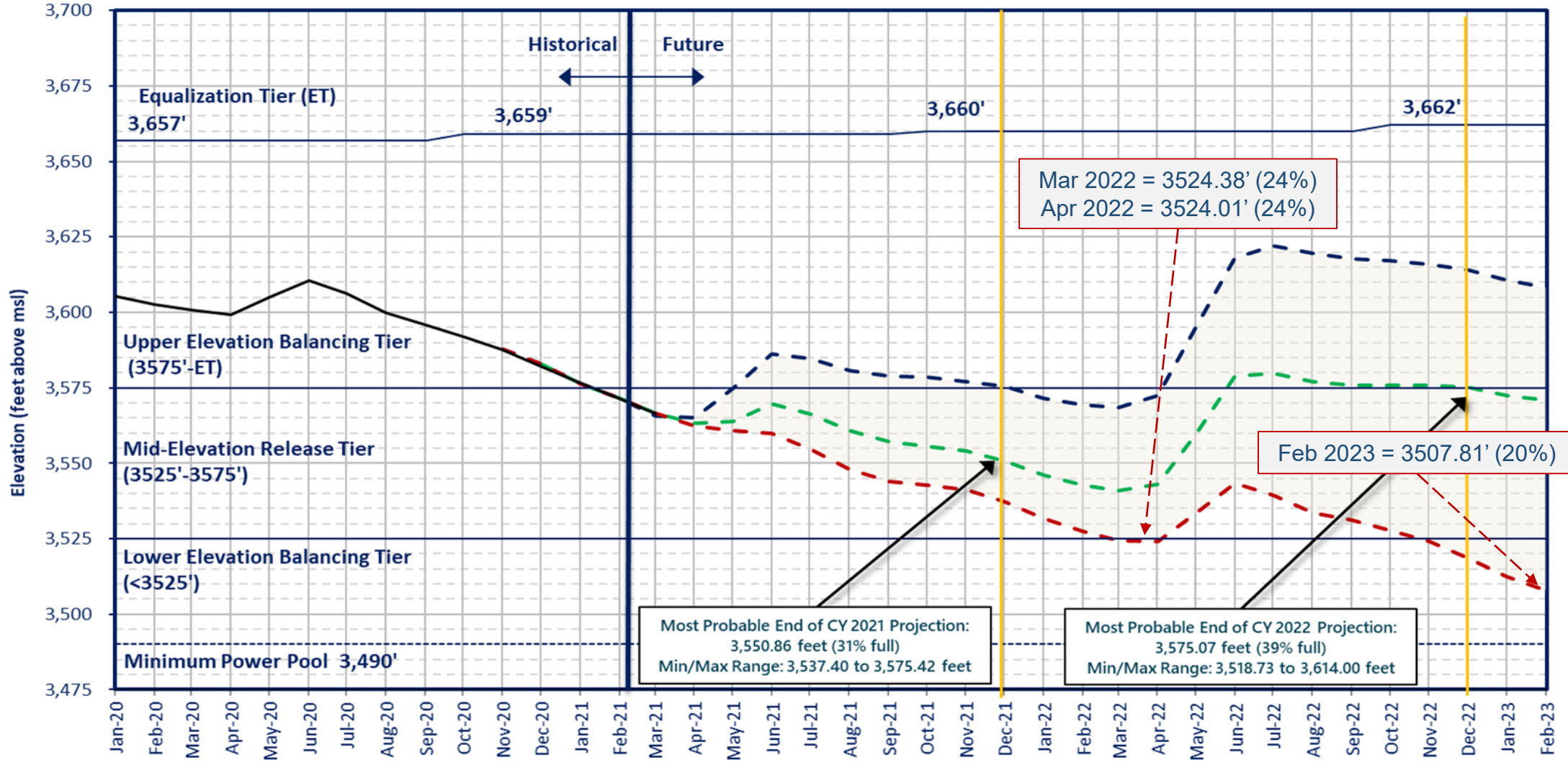
# Potential Lake Powell Monthly Release Volume Distribution

Release Scenarios for Water Year 2021  
Based on March 2021 Modeling



# Lake Powell End of Month Elevations

Historical and Projected based on March 2021 24-Month Study Inflow Scenarios



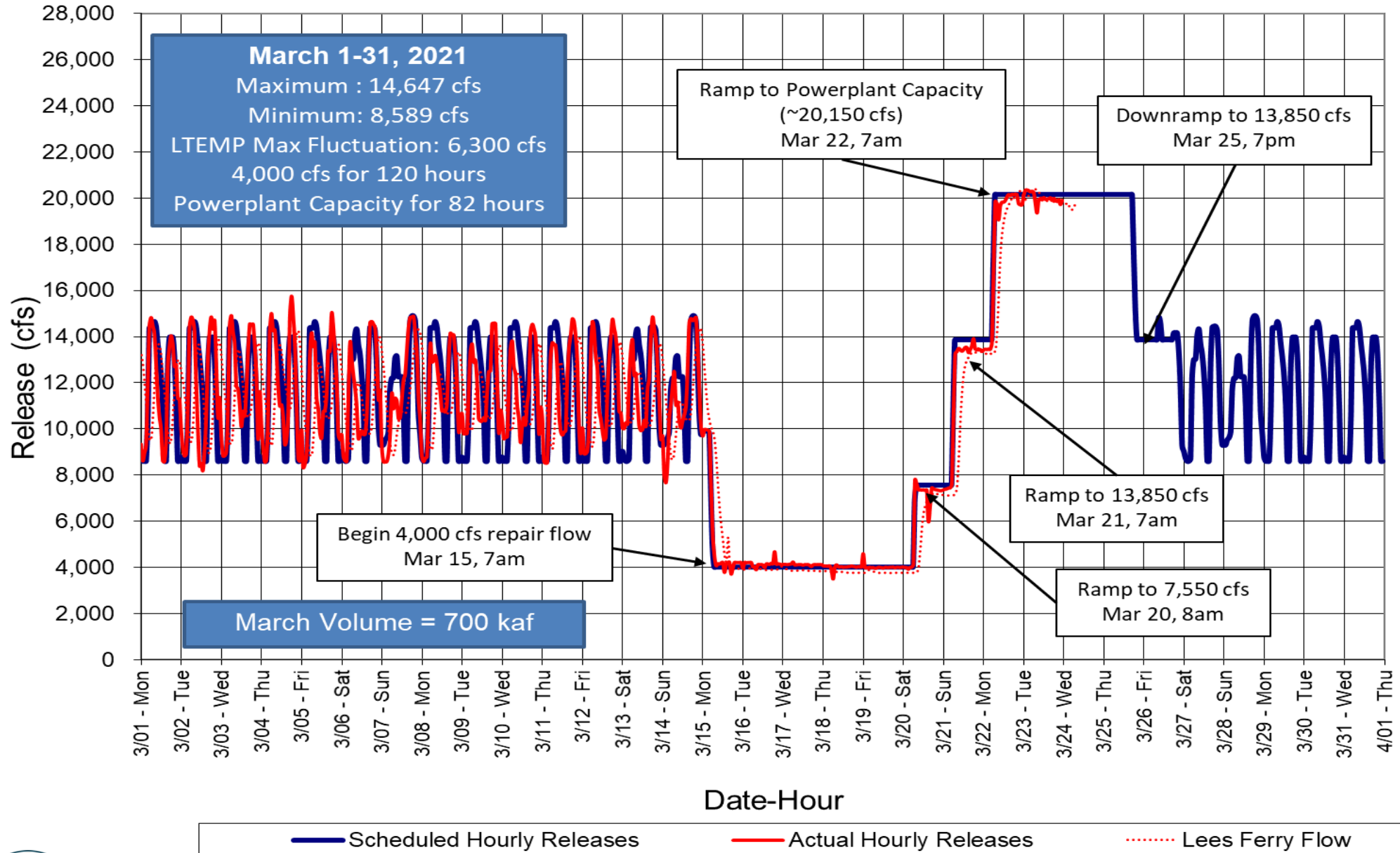
- — Mar 2021 Most Probable - Lake Powell release of 8.23 maf in WY2021 and 7.48 maf in WY2022
- - - Mar 2021 Max Probable - Lake Powell release of 8.60 maf in WY2021 and 9.0 maf in WY2022
- - - Mar 2021 Min Probable - Lake Powell release of 8.23 maf in WY2021, 7.48 maf and in WY2022
- Historical Elevations



BUREAU OF RECLAMATION



# Glen Canyon Dam Hourly Release Pattern March 2021

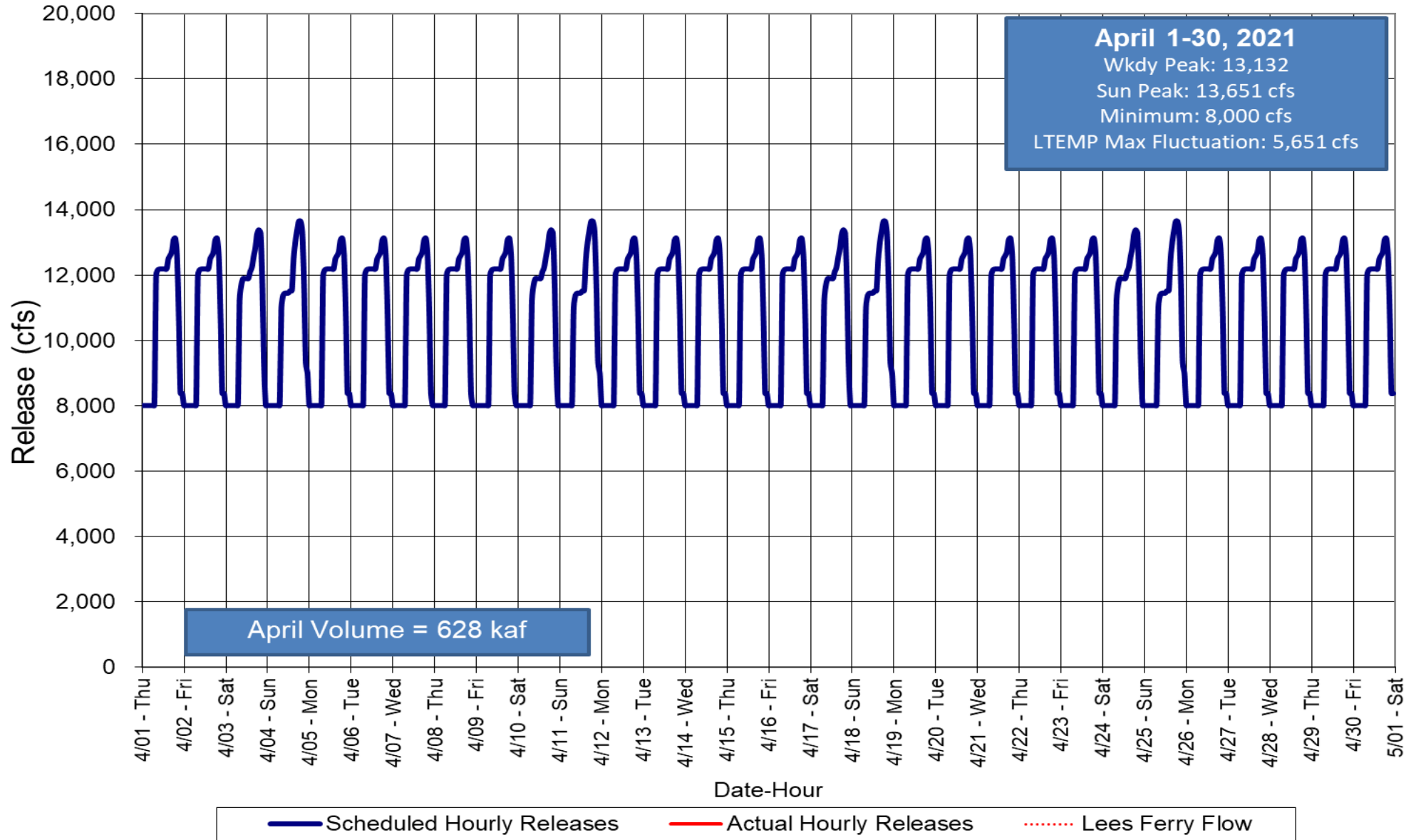




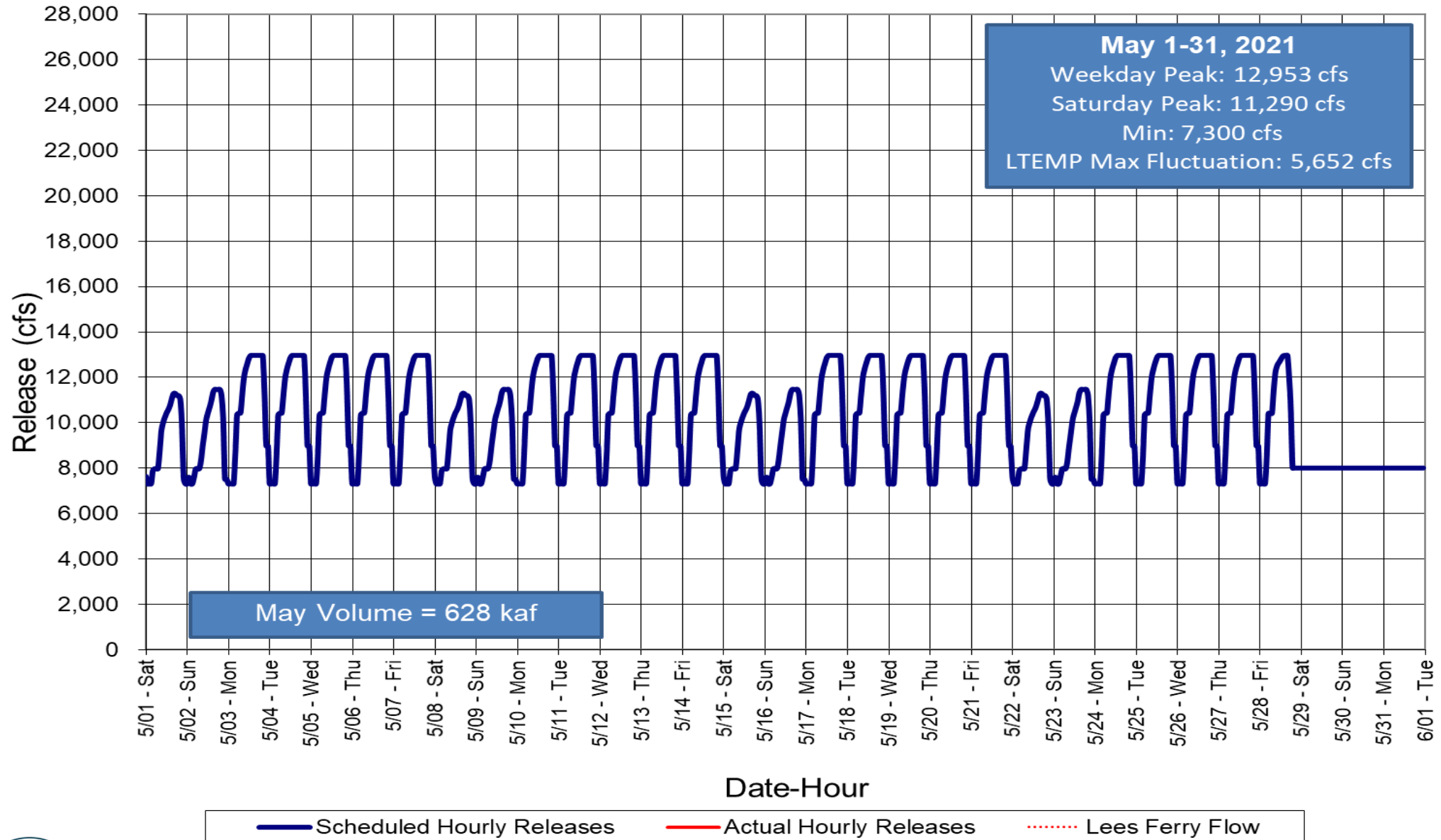




# Glen Canyon Dam Hourly Release Pattern April 2021



# Glen Canyon Dam Hourly Release Pattern May 2021



# Questions/Discussion



— BUREAU OF —  
RECLAMATION