

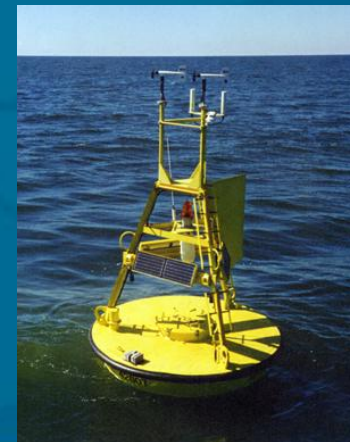
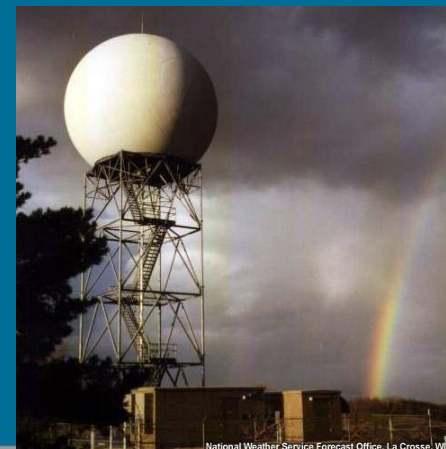


Observing Systems of the National Weather Service

Larry Dunn

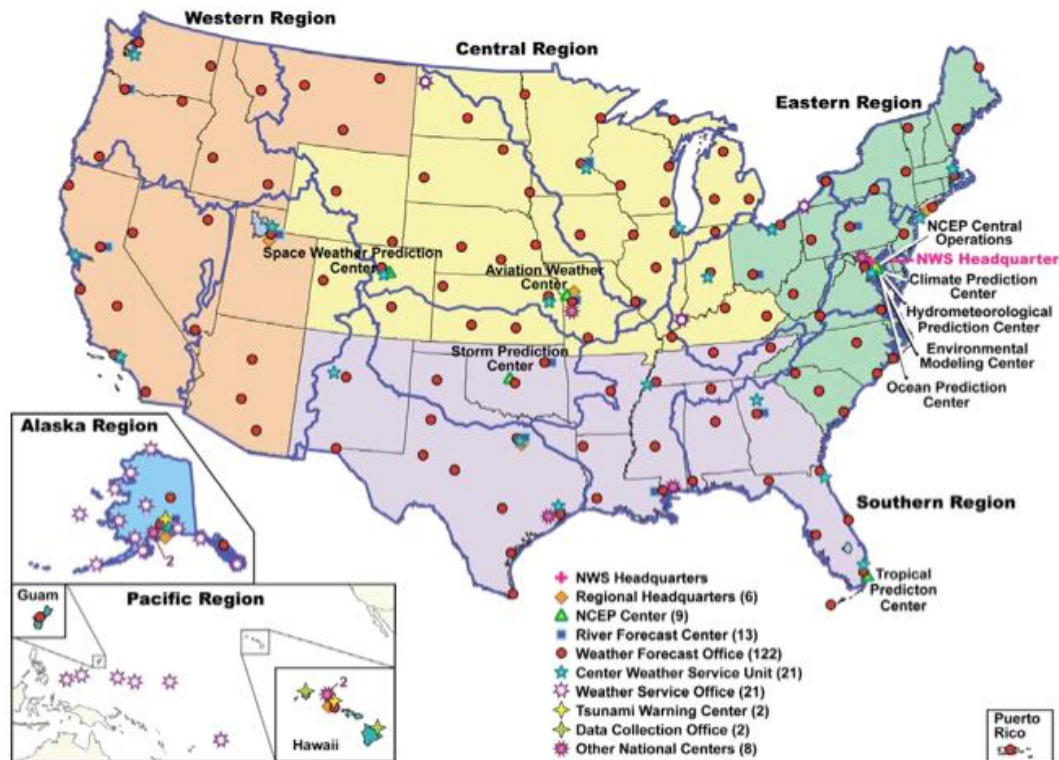
Meteorologist in Charge

NWS Weather Forecast Office SLC



Facilities

NWS Facilities



Networks

ASOS

COOP

Upper Air

Radar

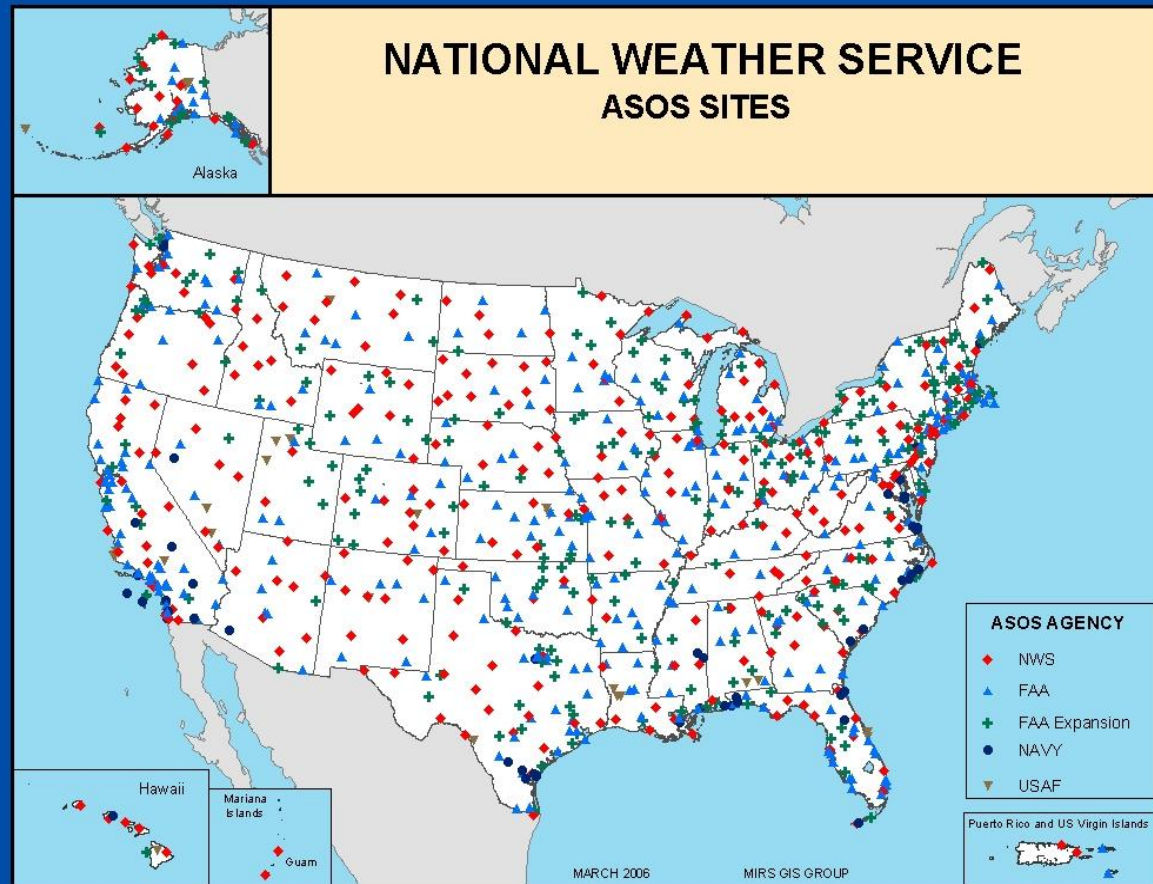
Buoys

Local Surface Networks (NWS)

(Satellite – not today)



ASOS



ASOS

- Wind
 - Speed/Direction/Gust
- Temperature
- Dew Point Temperature
- Ceiling
- Visibility
- Present Weather
 - Freezing rain (separate)
- Precipitation
- Processors/algorithms
- Communications



Climate/COOP

11,000 Classic COOP

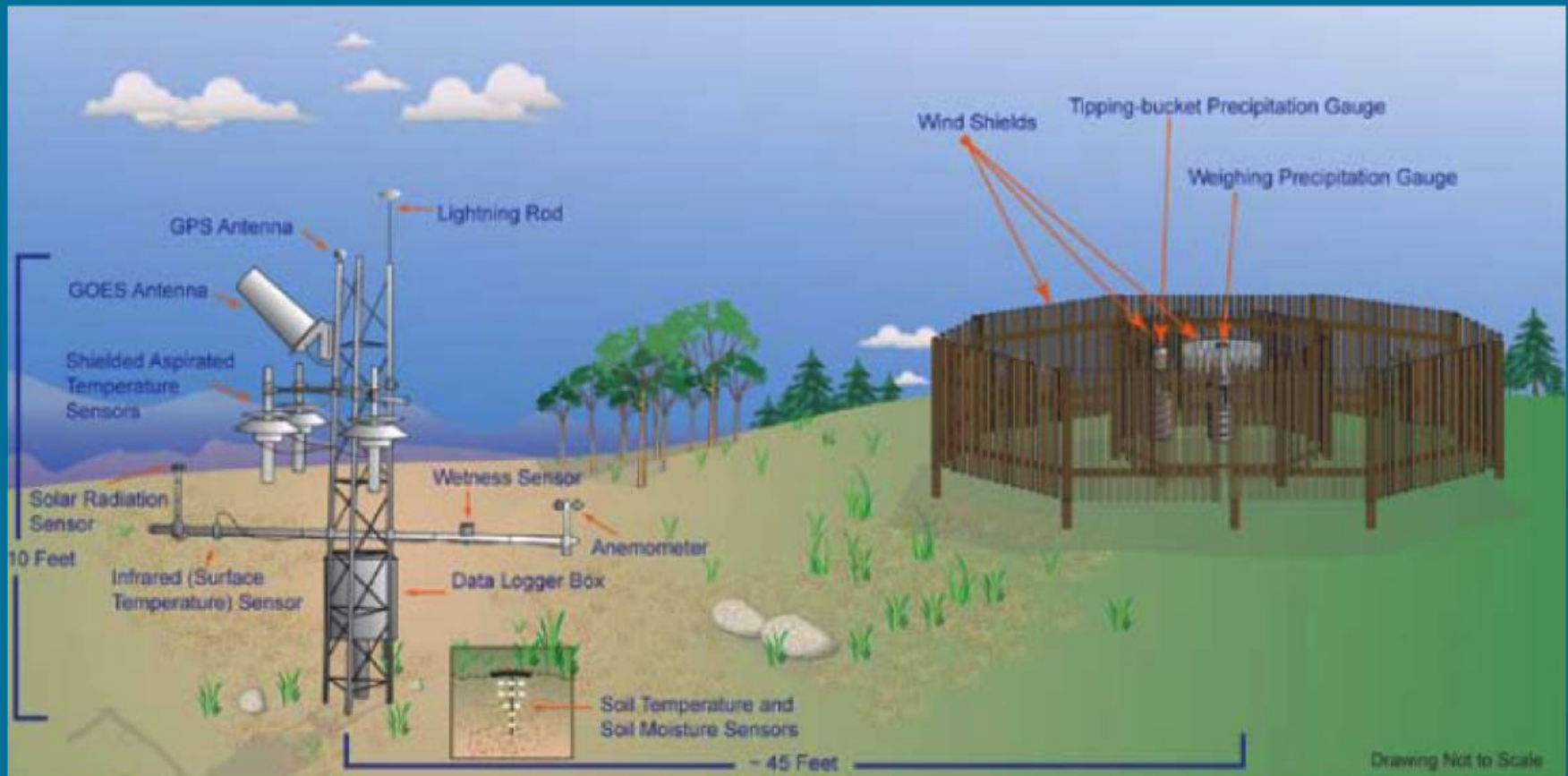
- Daily temperature/precipitation/snow
- Mostly manual, usually not real-time

Climate Reference Network – CRN

Historical Climate Network Modernization HCN-M (four corners states)

Combination of NWS and NCDC

CRN Station



HCN-M Station



COOP



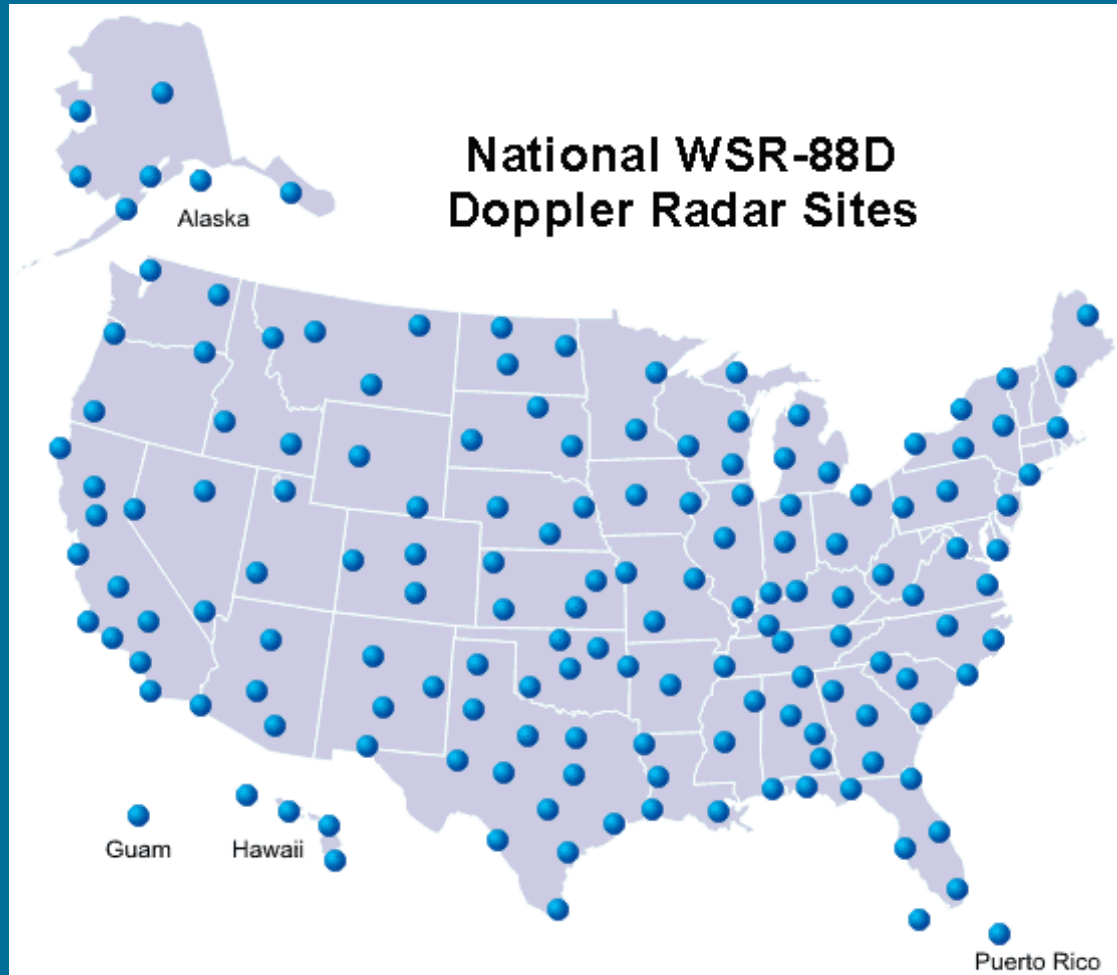
Upper Air Network



Upper Air Network



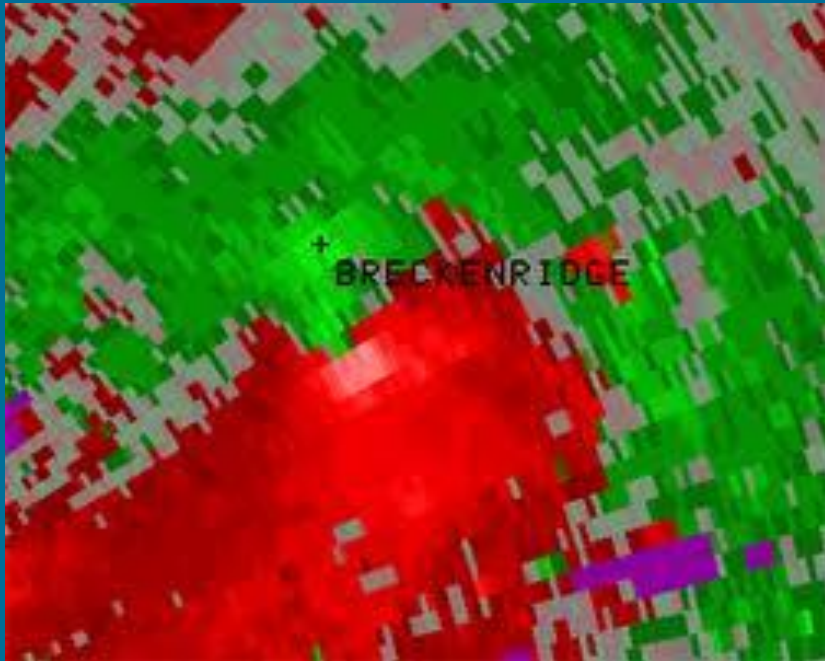
Doppler Radar



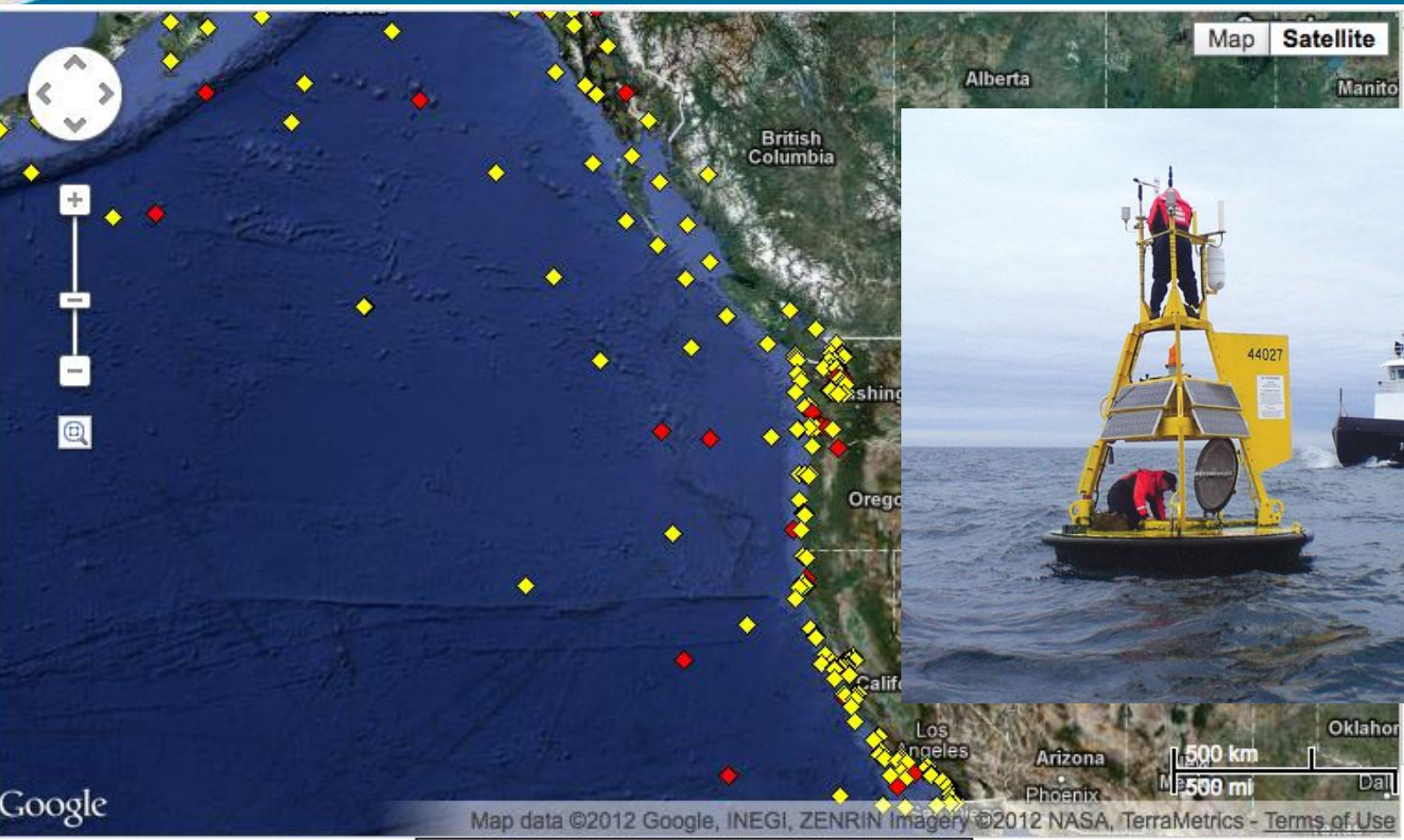
Doppler Radar



Doppler Radar



Buoys



Local Surface Networks

Upper Colorado River Network



Summary

- *Many observing networks*
- *Support Real-time Weather and Water Forecasts and Warnings*
- *Climate*
- *Research*

