

Overview

2018 Stakeholder Engagement Meeting Series - Great Basin

August 20, 2018 Utah Division of Water Resources



Logistics

2

- Restrooms
- Lunch



Basic Agenda

3

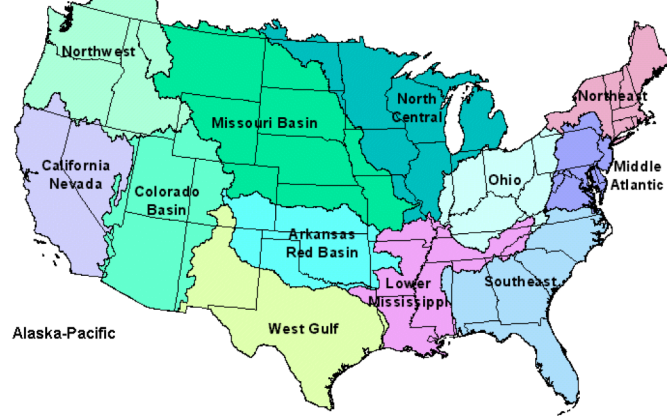
- Overview and Introductions
- Road to the Forecast
- Webpage Tour
- Breakout Groups
- Future Plans



River Forecast Centers

4

13 River Forecast Centers Nationwide



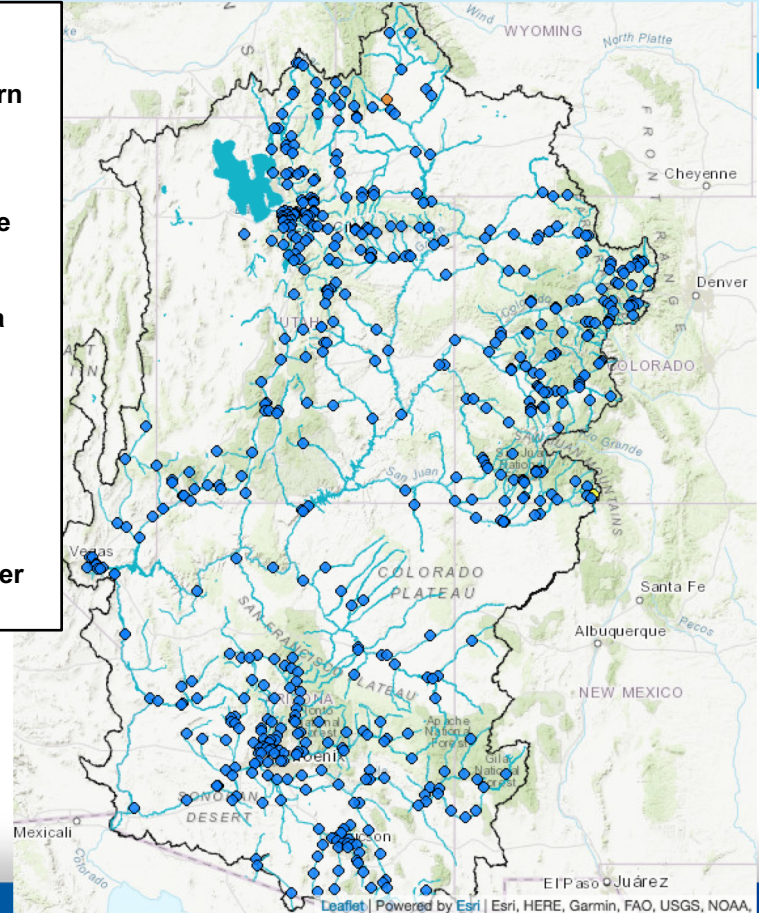
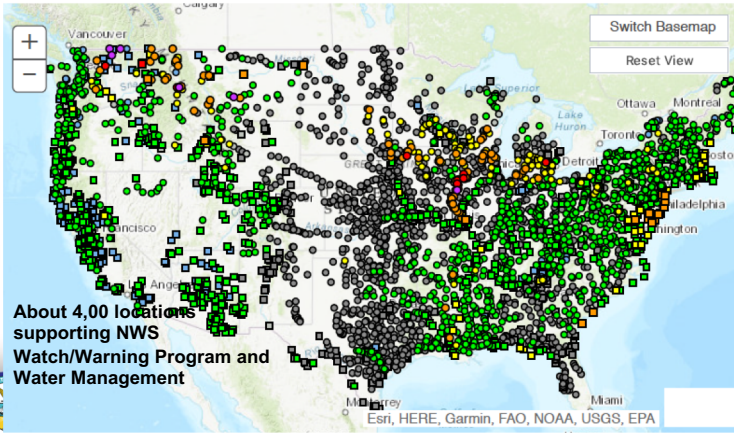
- Cover the entire Colorado River Basin and eastern portion of the Great Basin

- USE an immense amount of data

- Reclamation is a primary stakeholder

- Just under 500 daily forecast points

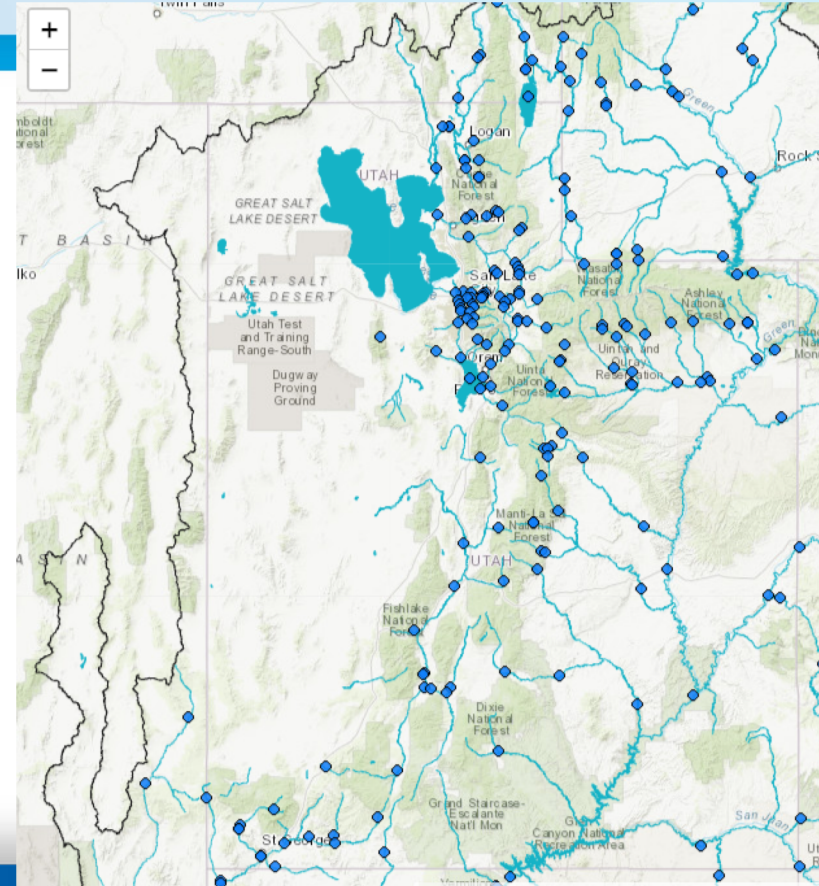
- Progressive water supply program



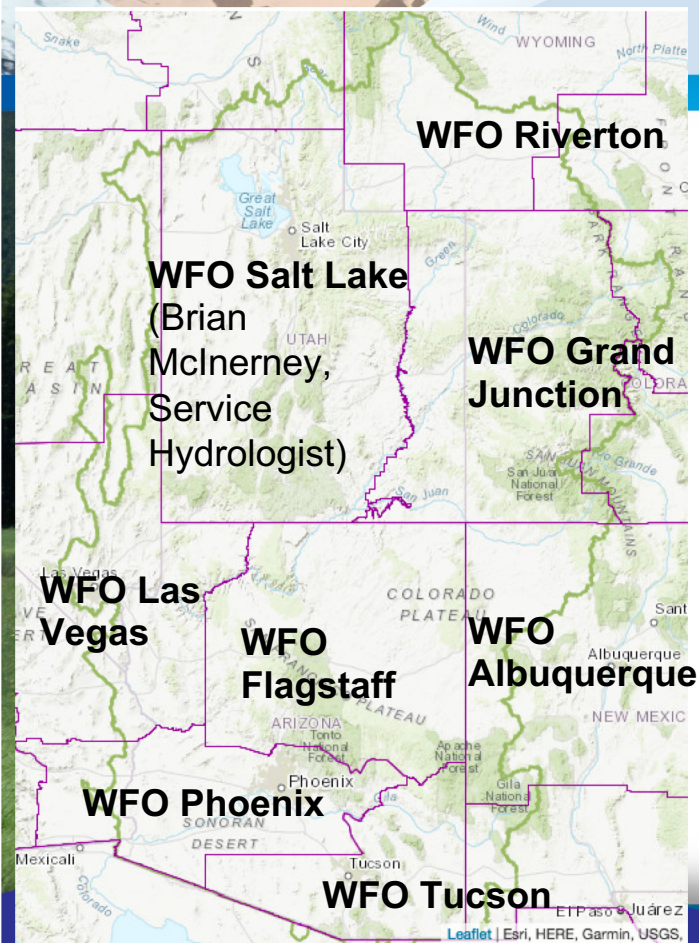
Great Basin Area Forecast Points

5

- **Calibrated using gage information from many stakeholders**
- **Model components of the Six Creeks, Provo River, Weber River, Bear River, and Great Salt Lake watersheds**
- **Primarily snowmelt driven flood issues in the northern part of the basin, but convective rain events in the southern portion can be cause flash flooding**



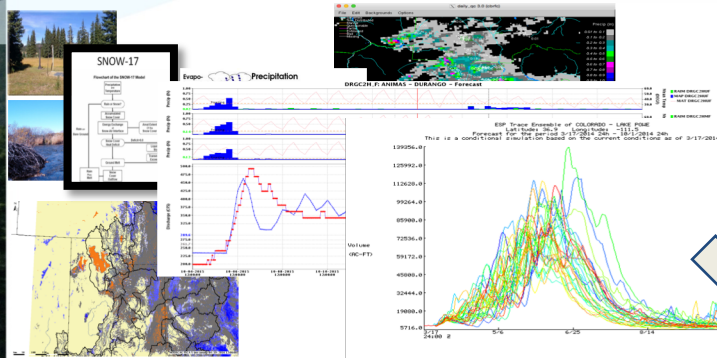
Working with the WFOs



- Weather Forecast Offices
 - Flood Watches and Warnings
 - Determine flood stages
 - “Eyes on the ground” – document impacts, notify communities
 - Work closely with Emergency Managers
- The CBRFC is the best resource for information regarding streamflow and water supply forecasts

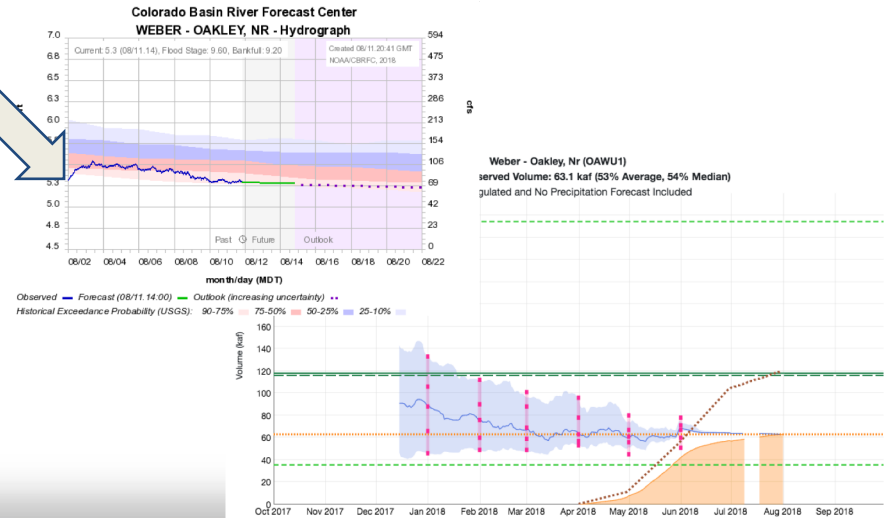
Hydrologic Information

7



At the CBRFC, we generate hydrologic data that is disseminated to many stakeholders, including WFOs.

WFOs will issue flood watches and warnings based on our forecasts. RFCs will provide additional support based on the event as requested. During a flash flood event, contact the WFO directly



Who We Are

8

- Work with a broad and diverse set of stakeholders
 - Reclamation
 - Municipal and Agricultural Water Users
 - USGS, NRCS, and many other federal agencies
 - State, academic, NGOs
- Receive data from many of these sources
 - We're data users; we do not maintain data networks
 - We rely very much on our stakeholders, especially in the Great Basin



Great Basin Webinars

9

- Monthly (Jan-May at least) Great Basin webinars
- Detailed information about the forecast and the data and science behind them
- Great opportunity to ask questions
- Sign up with me or on our website



Contact Us!

Michelle Stokes michelle.stokes@noaa.gov

Paul Miller paul.miller@noaa.gov

Craig Peterson craig.peterson@noaa.gov

Ashley Nielson ashley.nielson@noaa.gov

Brent Bernard brent.bernard@noaa.gov

Patrick Kormos patrick.kormos@noaa.gov



2242 W. North Temple
Salt Lake City, 84116

Operations Line: 801-524-4004

Operations e-mail: cbrfc.operations@noaa.gov

