

RECLAMATION

Managing Water in the West

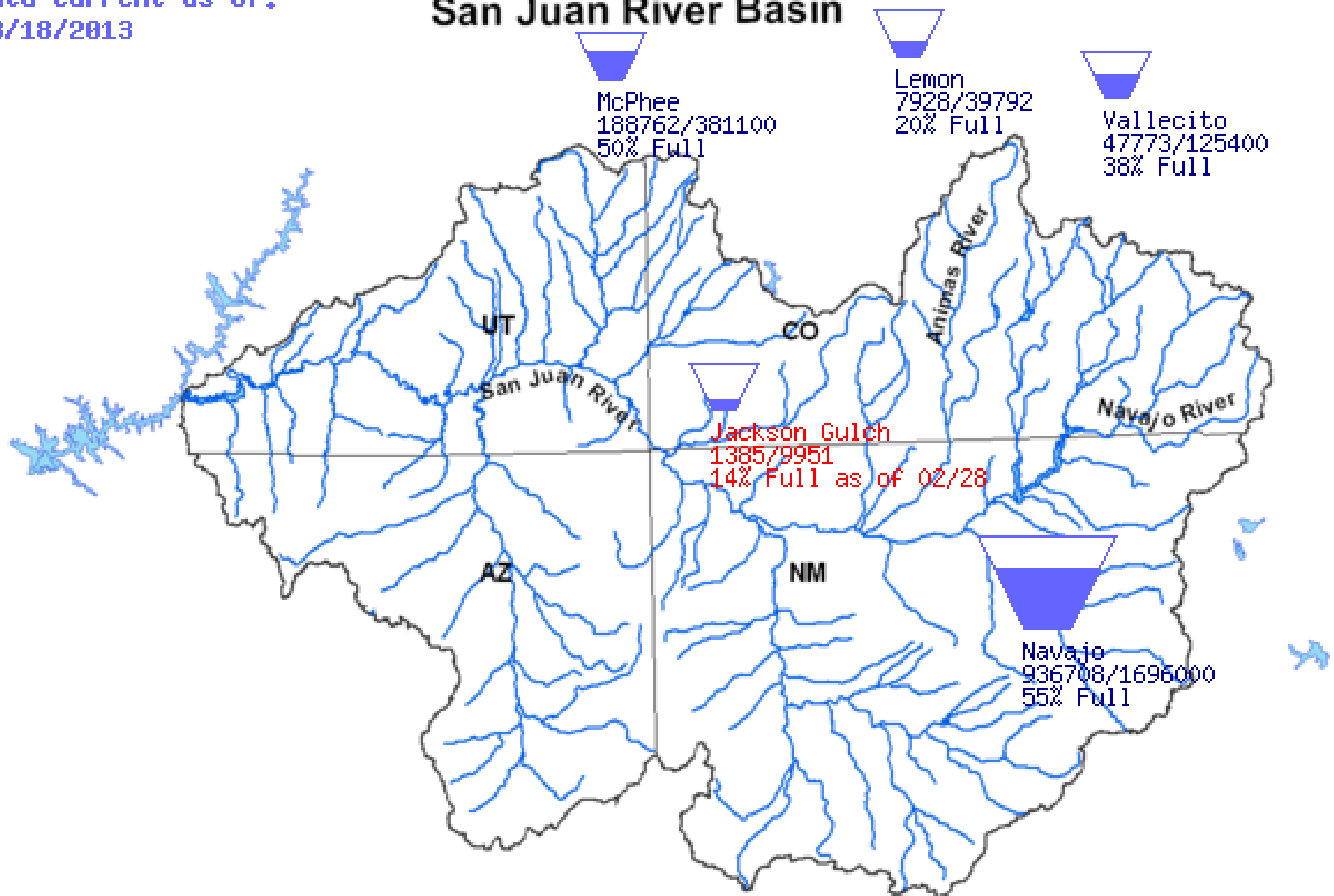


**Proposed WY 2013
Operations Update
Navajo Unit**



U.S. Department of the Interior
Bureau of Reclamation

San Juan River Basin



San Juan River Basin Reservoirs Current Conditions

Reservoir	2012		2013	
	Storage (af)	% Avg	Storage (af)	% Avg
Lemon	14,000	67%	8,000	38%
Vallecito	76,000	119%	46,000	72%
Lake Nighthorse	112,000	n/a	108,000	n/a
Navajo	1,285,000	99%	938,000	73%
McPhee	288,000	107%	189,000	71%

Reservoir	2012		2013 Forecast	
	April-July Inflow (af)	% Avg	April-July Inflow (af)	% Avg
Lemon	32,000	58%	35,000	64%
Vallecito	107,000	55%	128,000	66%
Lake Nighthorse	N/A	n/a	N/A	n/a
Navajo	310,000	49%	450,000	71%
McPhee	120,000	41%	165,000	57%

Navajo Current Conditions

(as of 3/19/13)

Elevation = 6023 ft

Storage = 936,803 af (55% Full, 76% of Avg)

Observed Inflow = 515 cfs*

Release = 350 cfs

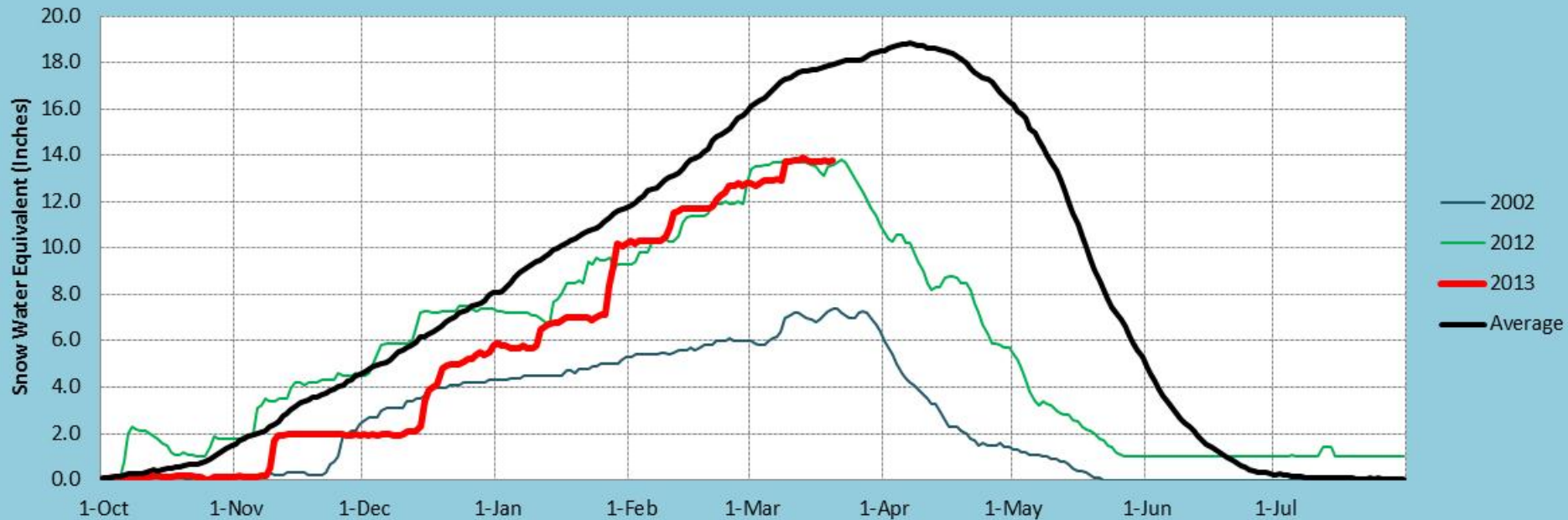
NIIP = 115 cfs*

San Juan-Chama Diversion = 23 cfs*

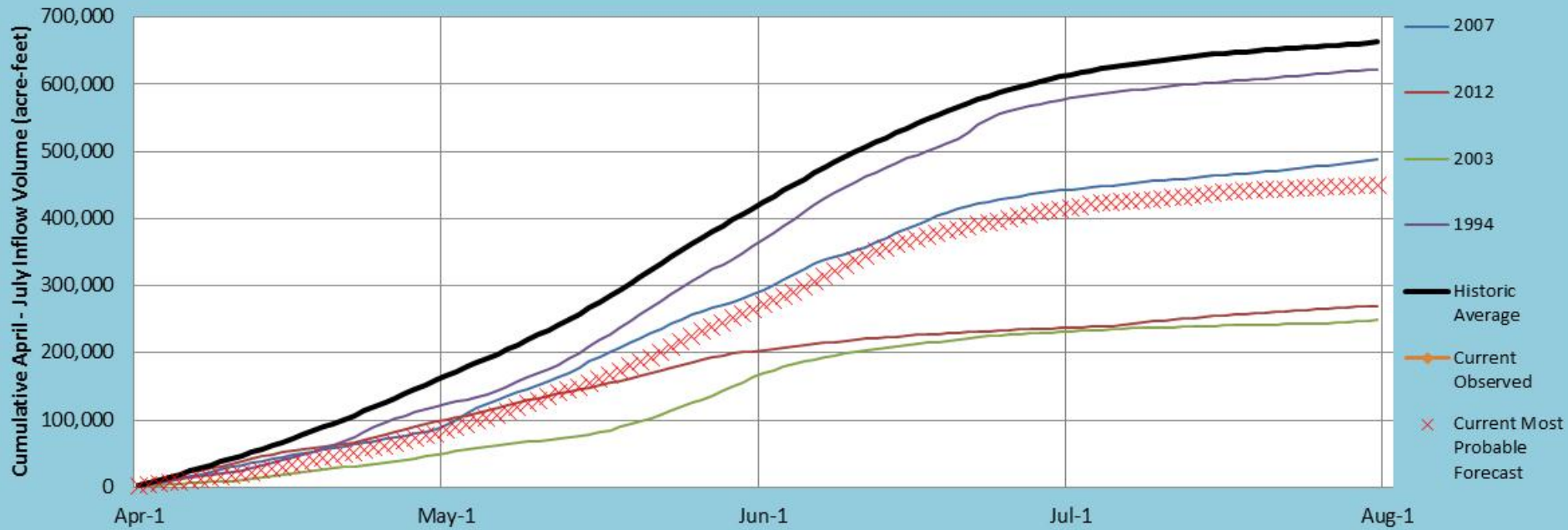
* Average of the last 7 days

RECLAMATION

Navajo Reservoir SNOTEL SWE



Cumulative April - July Observed Inflow of Representative SWE Years



CBRFC Navajo Forecast

Issued Mar 18, 2013

April-July Modified Unregulated Inflow Forecast (acre-ft)

(percent of average)

Min

250,000

(34%)

Most

450,000

(61%)

Max

620,000

(83%)

RECLAMATION

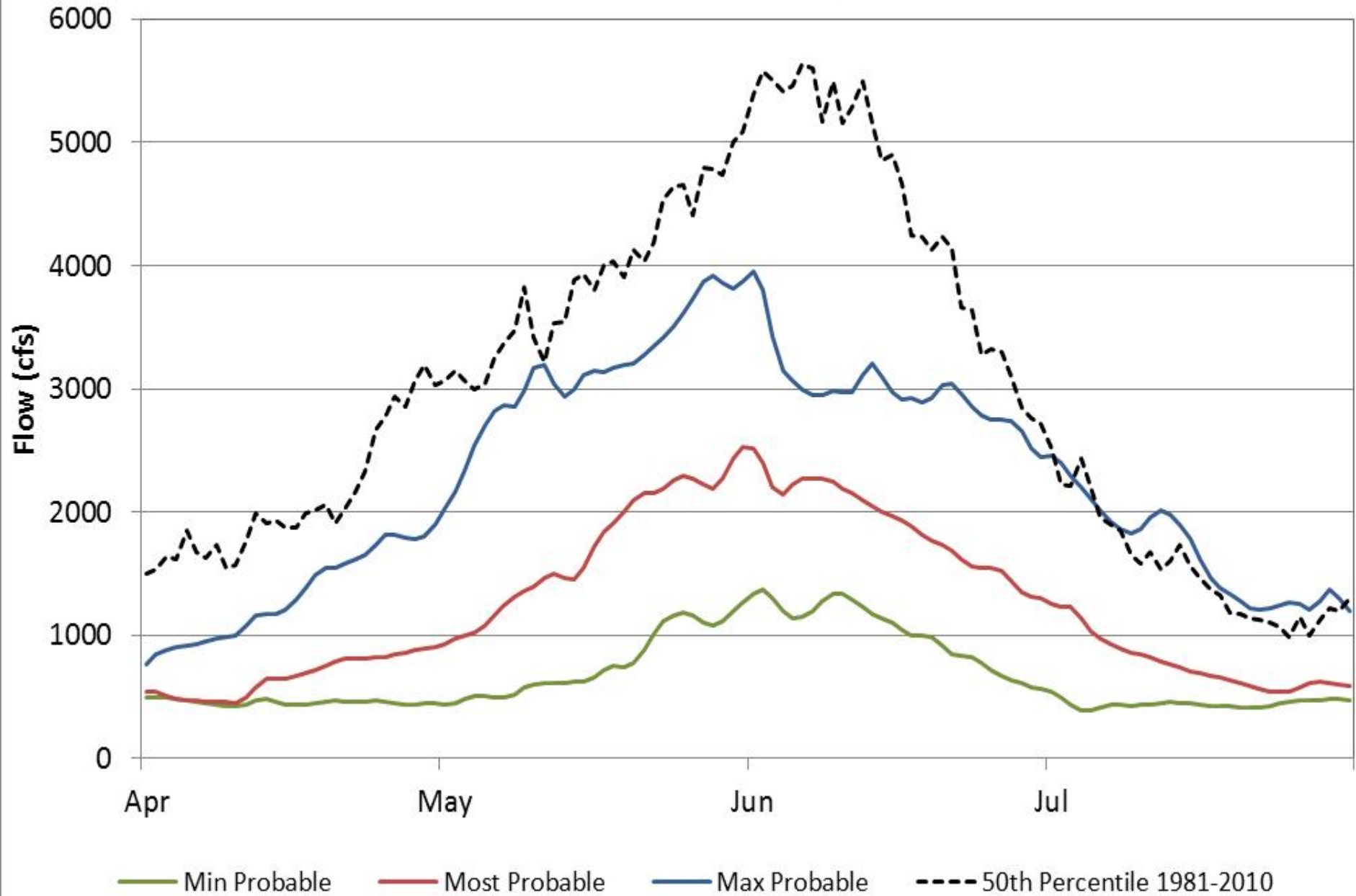
2013 Spring Peak Release

Probability	Available Water	Release
Min	(112,000) af	none
Most	83,000 af	none
Max	182,000 af	1 week at 5,000 cfs

** Based on March 18, 2013 forecast and SJRIP Flow Recommendations*

Forecasted Flows- San Juan River at Bluff April - July 2013

As of March 18 2013
CBRFC Forecasts



WY2013

San Juan Contribution* to Lake Powell

(percent of average 1981-2010)

Min	397,000 (28%)
Most	556,000 (39%)
Max	893,000 (63%)

** Based on modeled daily flows for San Juan at Bluff*

RECLAMATION