

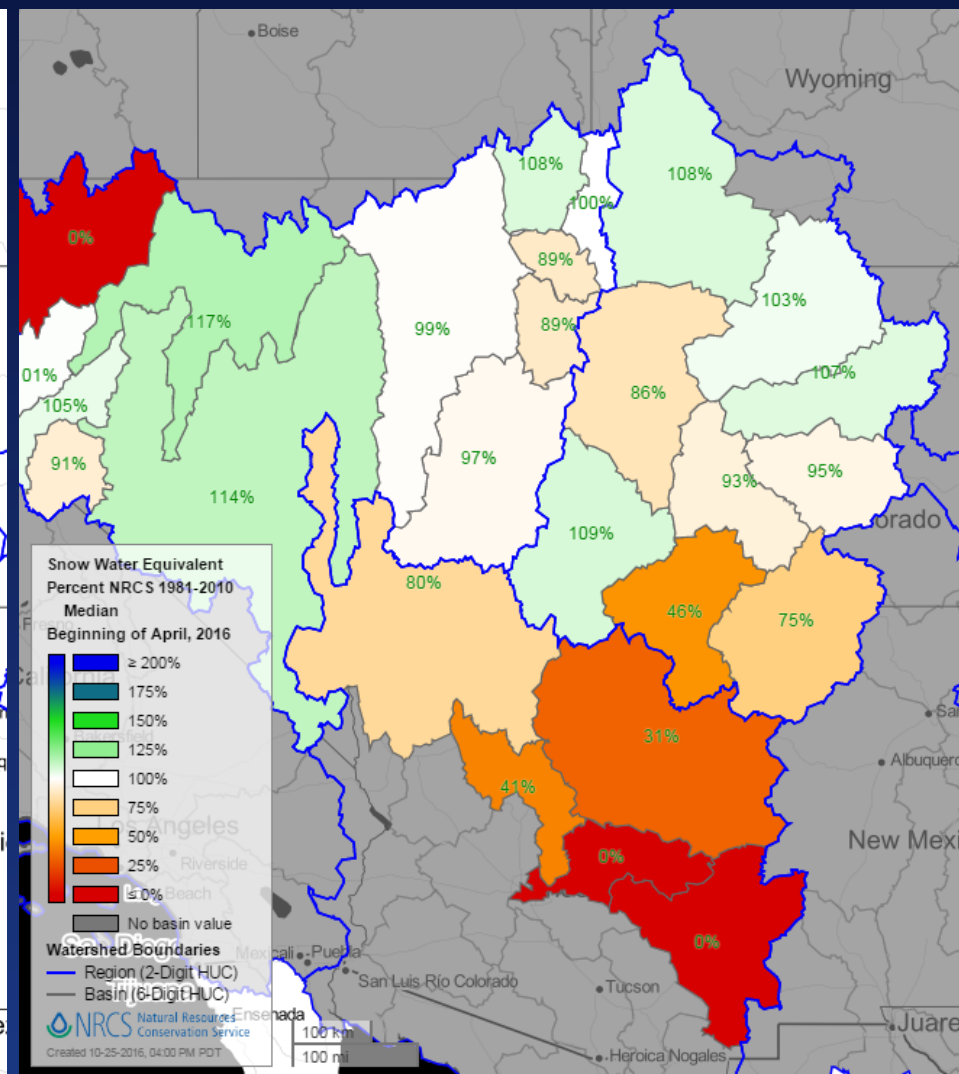
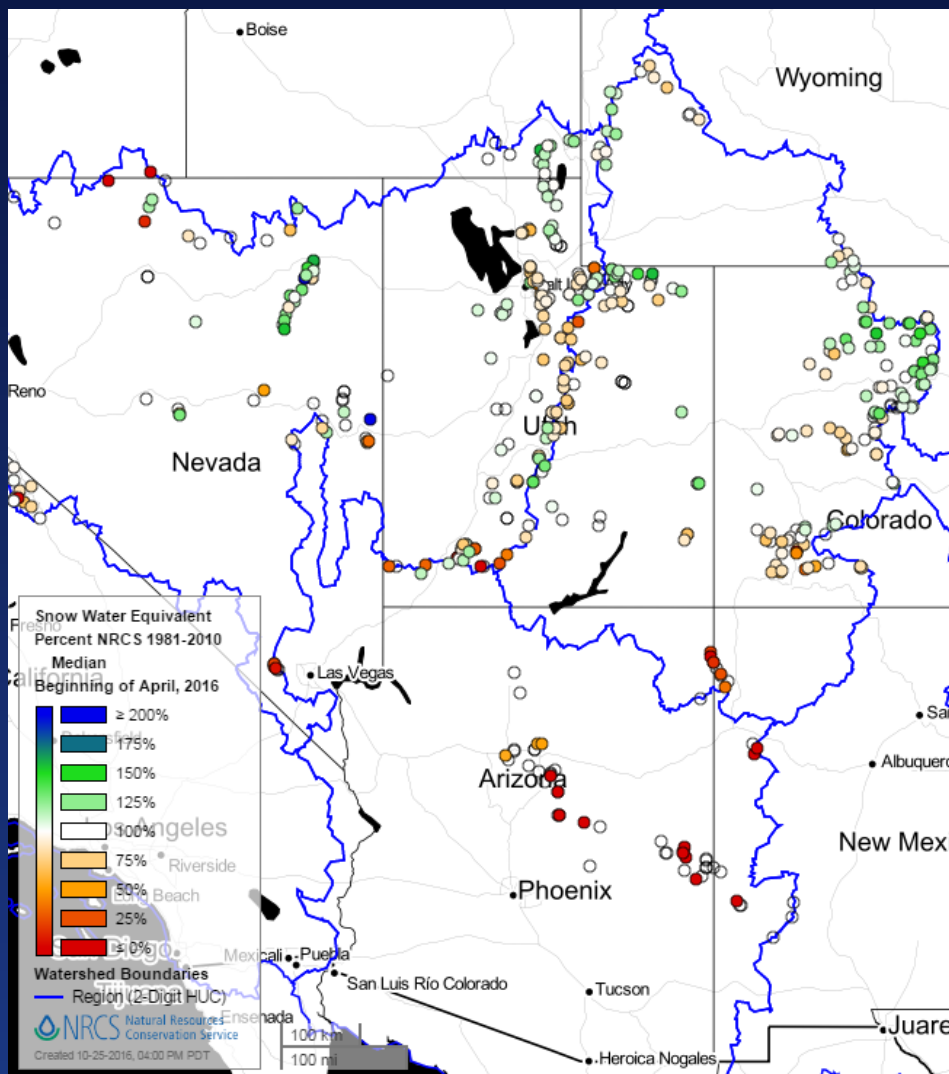
Snowpack Conditions, Station Information and Data Acquisition/ Analysis

Gus Goodbody

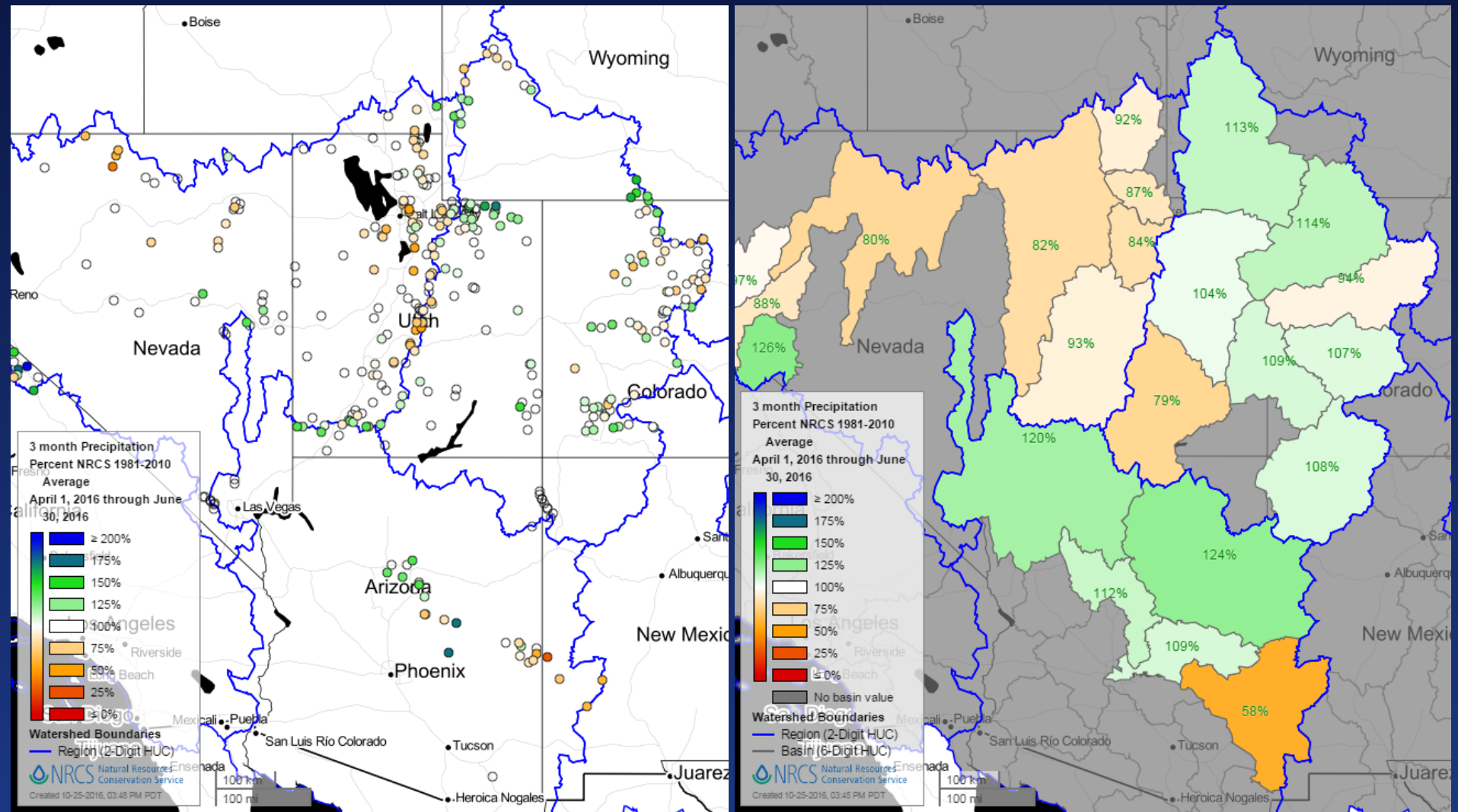
United States Department of Agriculture
Natural Resources Conservation Service
National Water and Climate Center
Portland, Oregon

Presented at
Colorado River Forecast Service Meeting
Salt Lake City, UT
27 October 2016

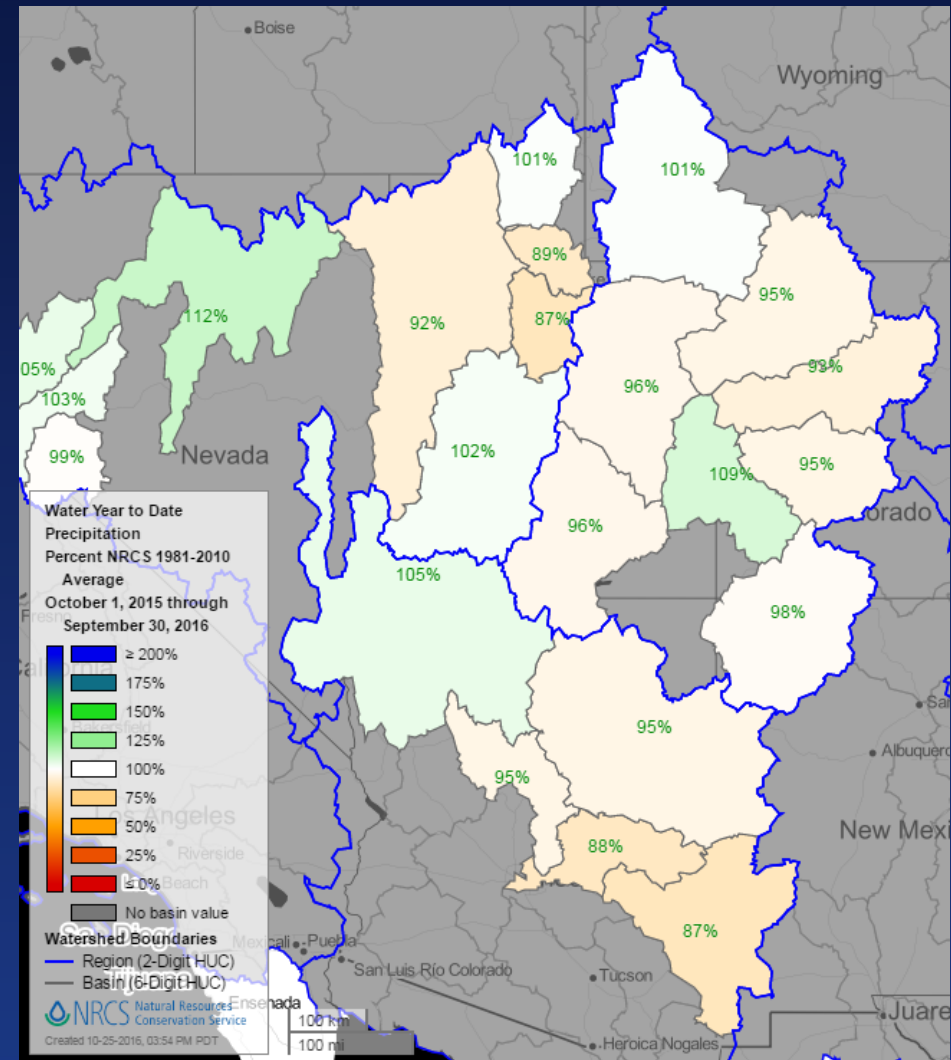
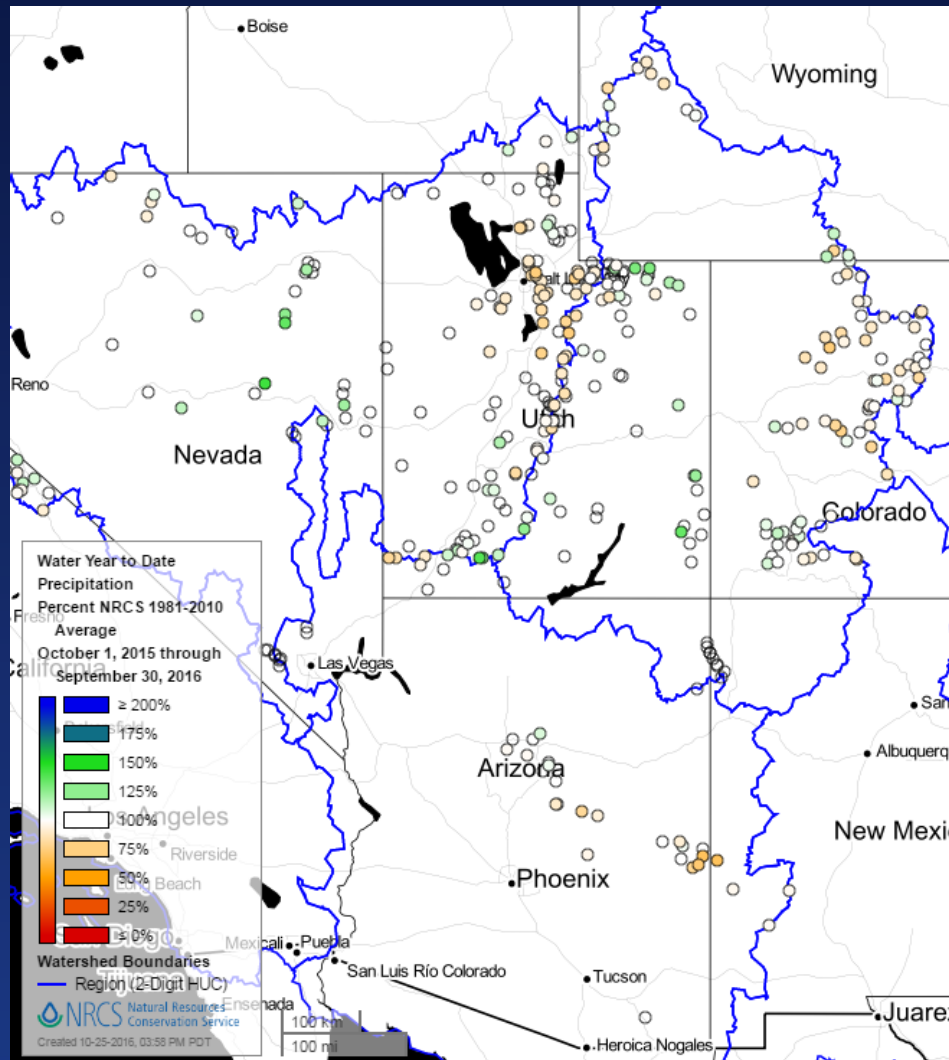
Mountain Snowpack Conditions - April 1, 2016



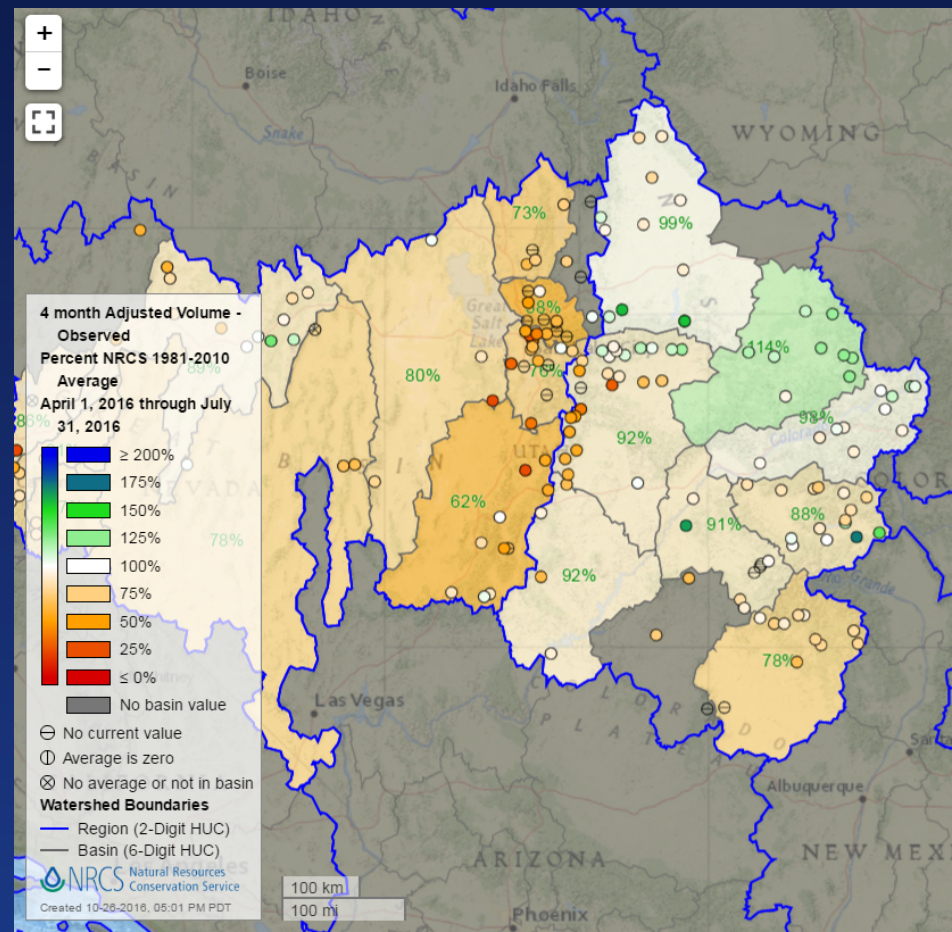
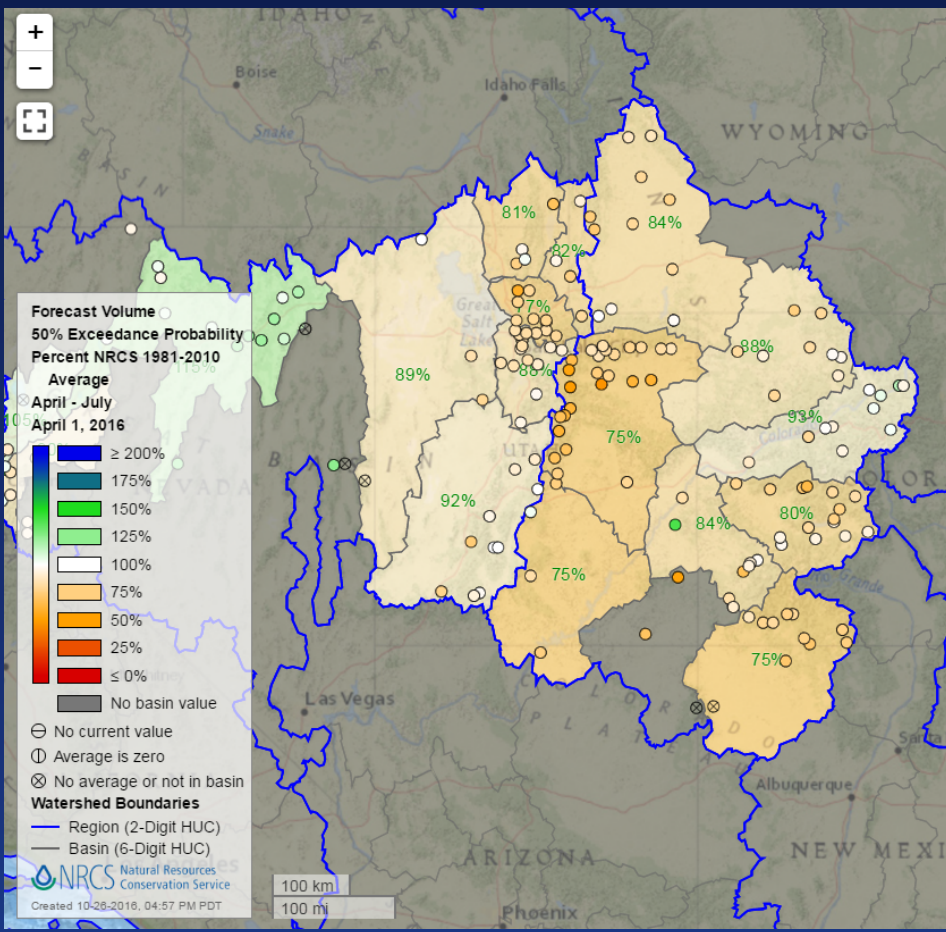
Spring Mountain Precipitation, 2016



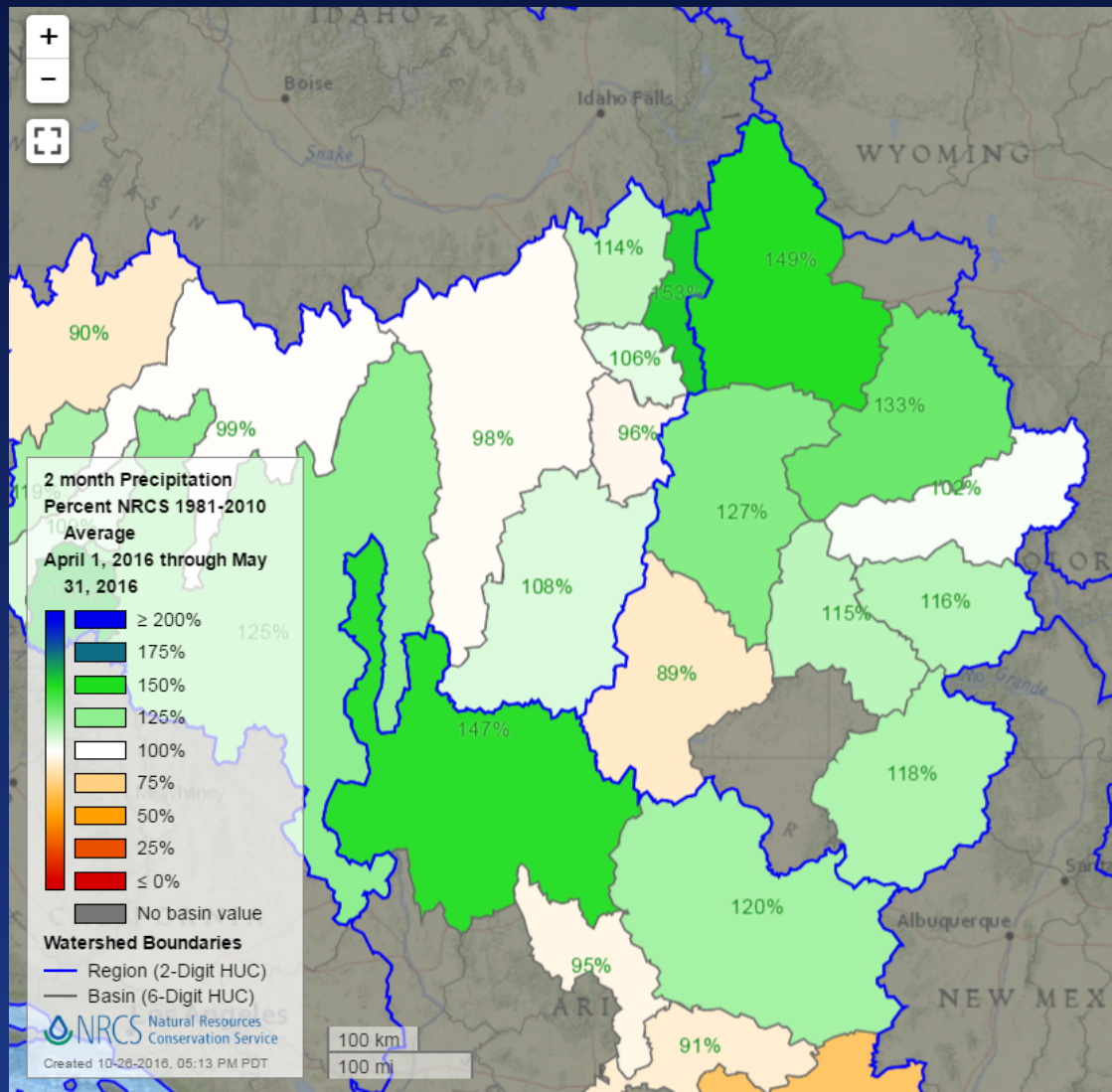
Water Year Mountain Precipitation, 2016



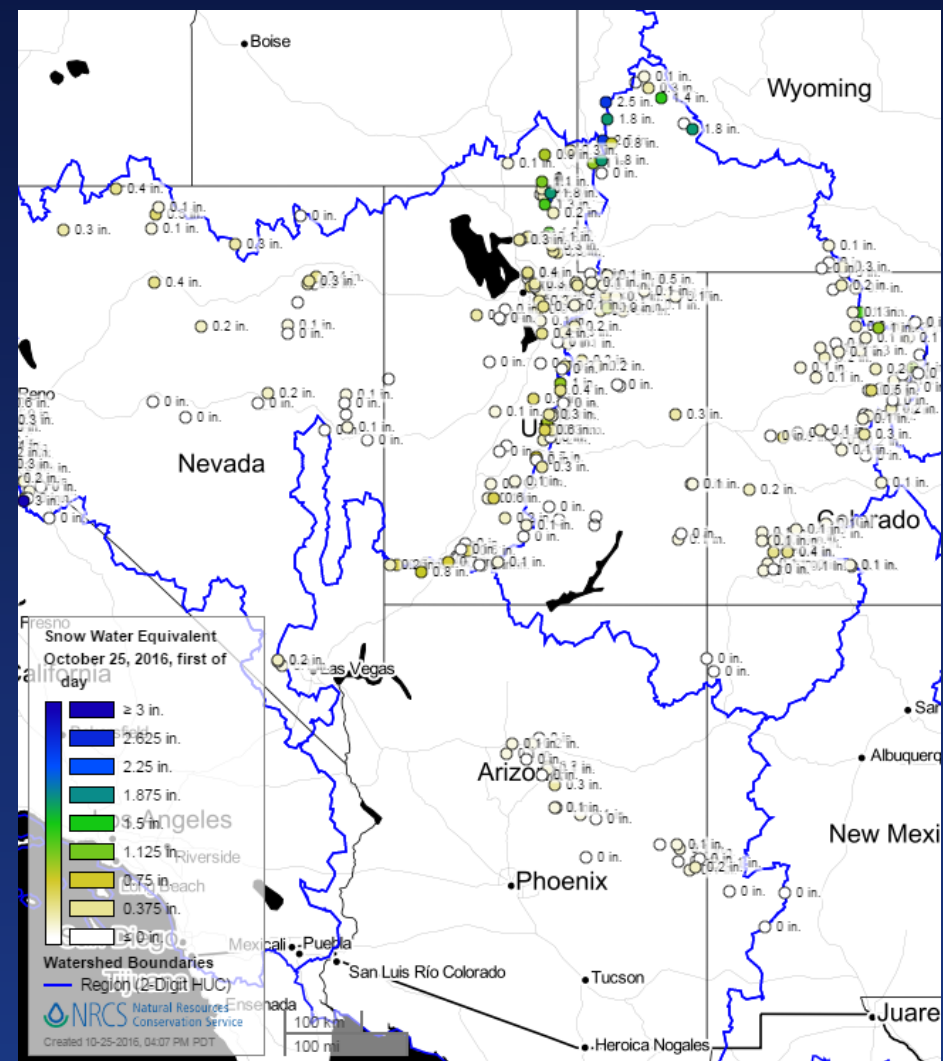
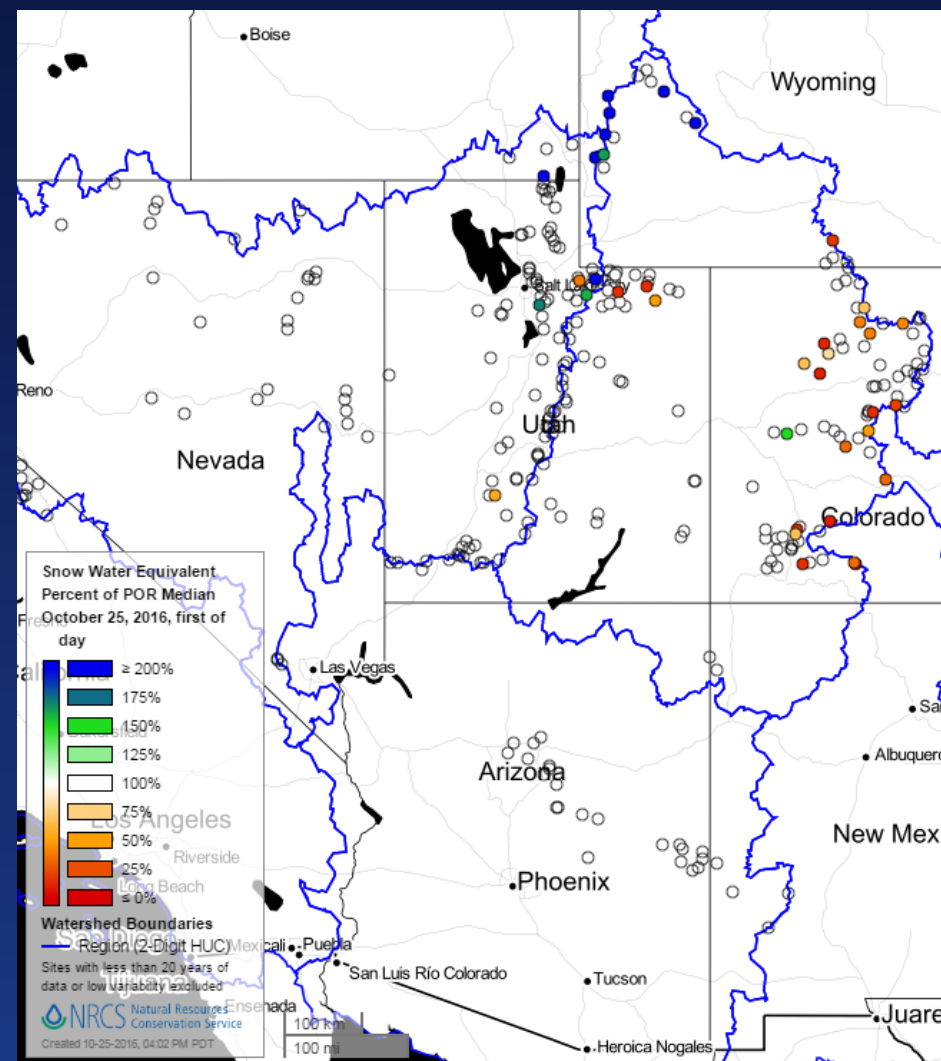
WY 2016, April 1 Forecast Verification



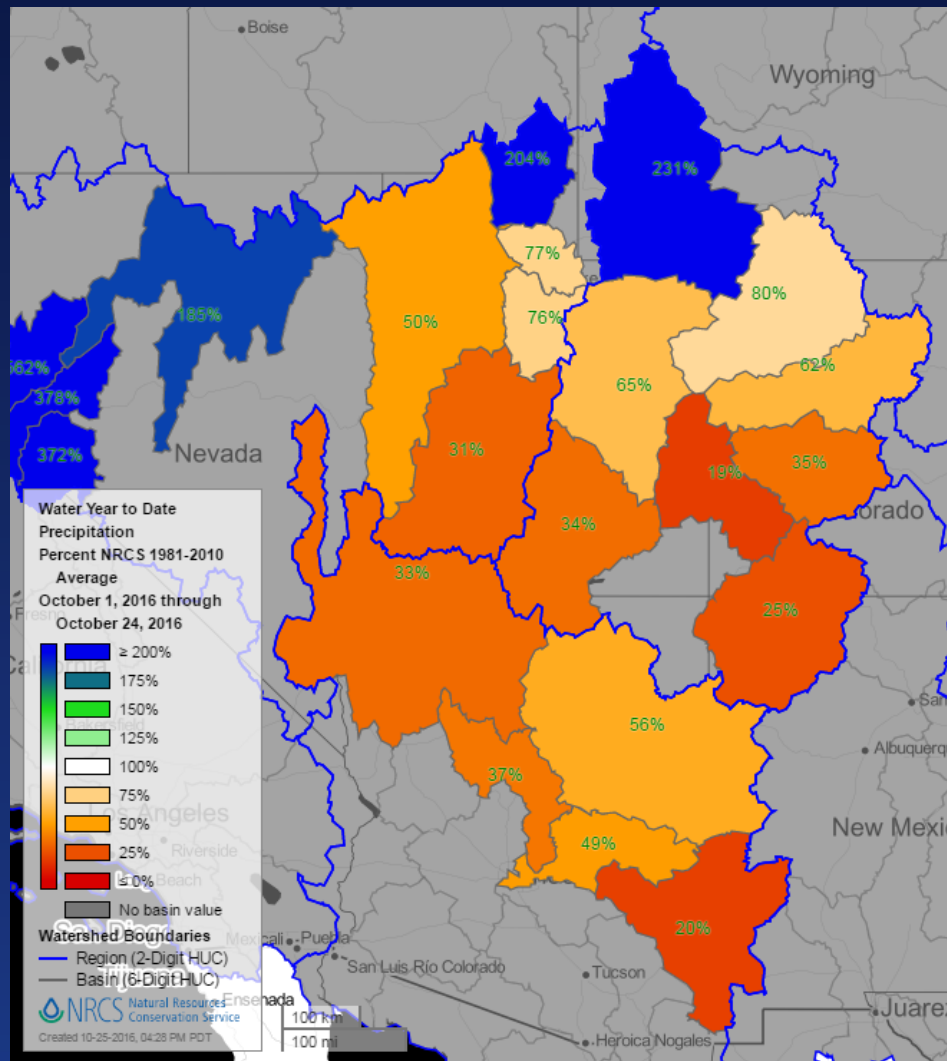
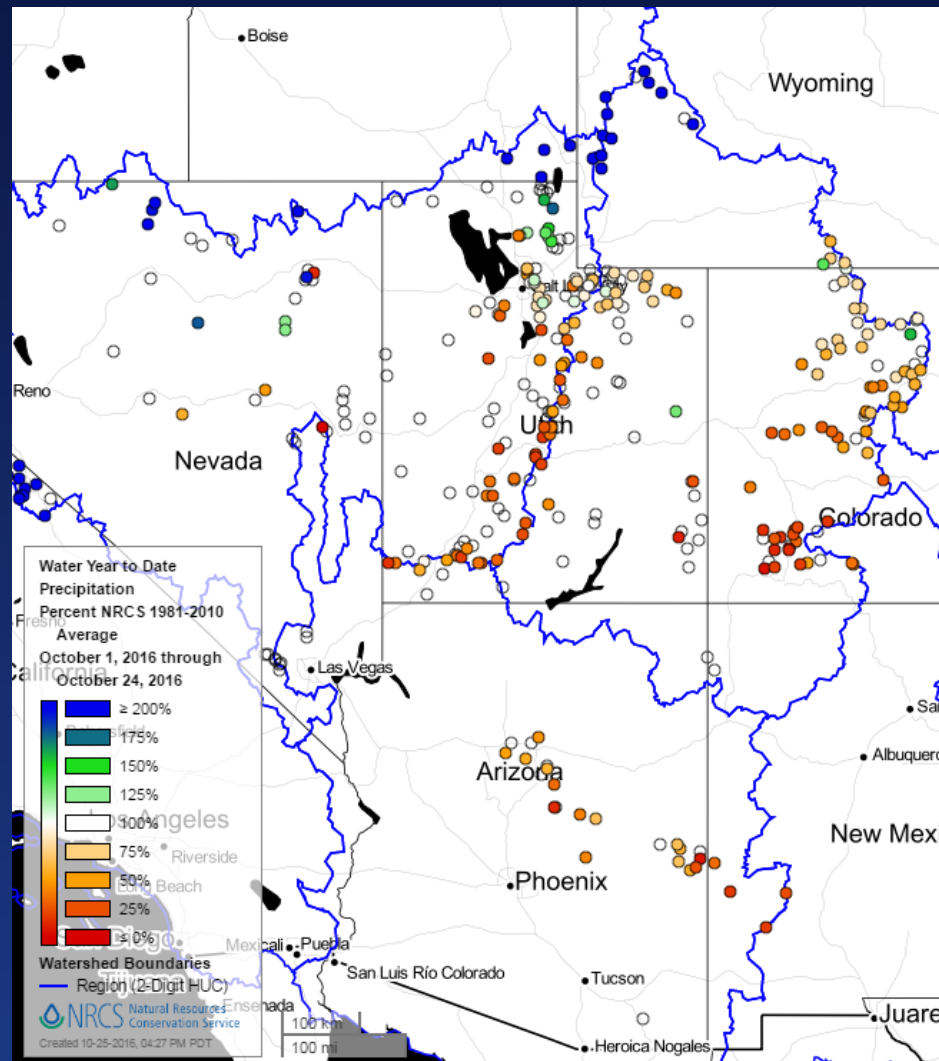
April-May Mountain Precipitation, 2016

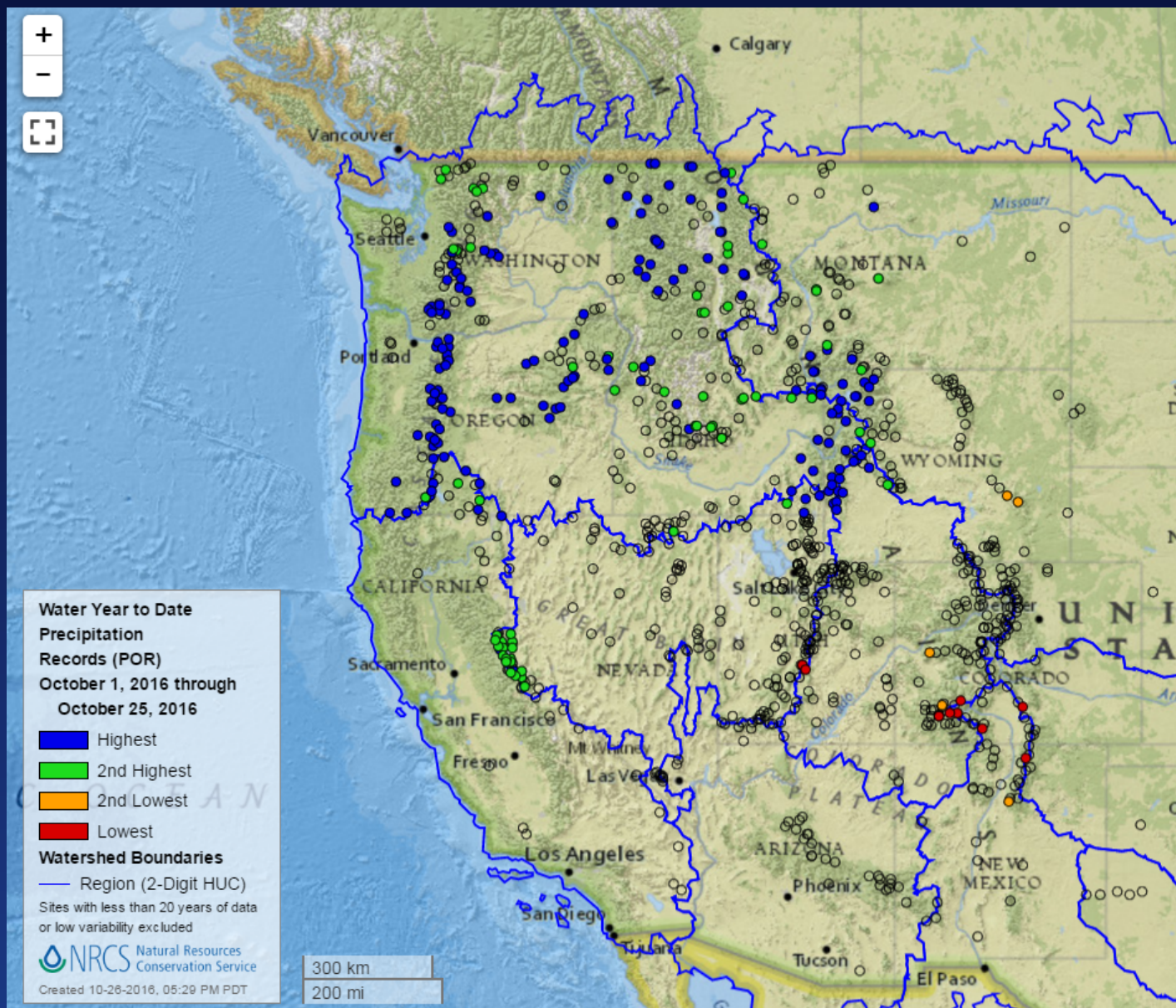


Snowpack Conditions - October 25, 2016



October Precipitation, 2016





New, Upgraded and Impacted SNOTEL, 2016 Colorado Basin and Great Basin

New Sites

Metadata Report

(As of: Wed Oct 26 09:54:38 GMT-08:00 2016)

Provisional data, subject to revision

Station Name	Station Id	State Code	Network Code	Elevation	Latitude	Longitude	Start Date	End Date
Bobs Hollow	1278	UT	SNTL	9300	38.94797	-112.14705	2016-08-31	2100-01-01
Elkhead Divide	1252	CO	SNTL	8780	40.79649	-107.10122	2016-08-31	2100-01-01
Santaquin Meadows	1280	UT	SNTL	7800	39.92082	-111.71822	2016-10-26	2100-01-01

Soil Moisture and Soil Temperature Sensors Added

(As of: Wed Oct 26 11:22:27 GMT-08:00 2016)

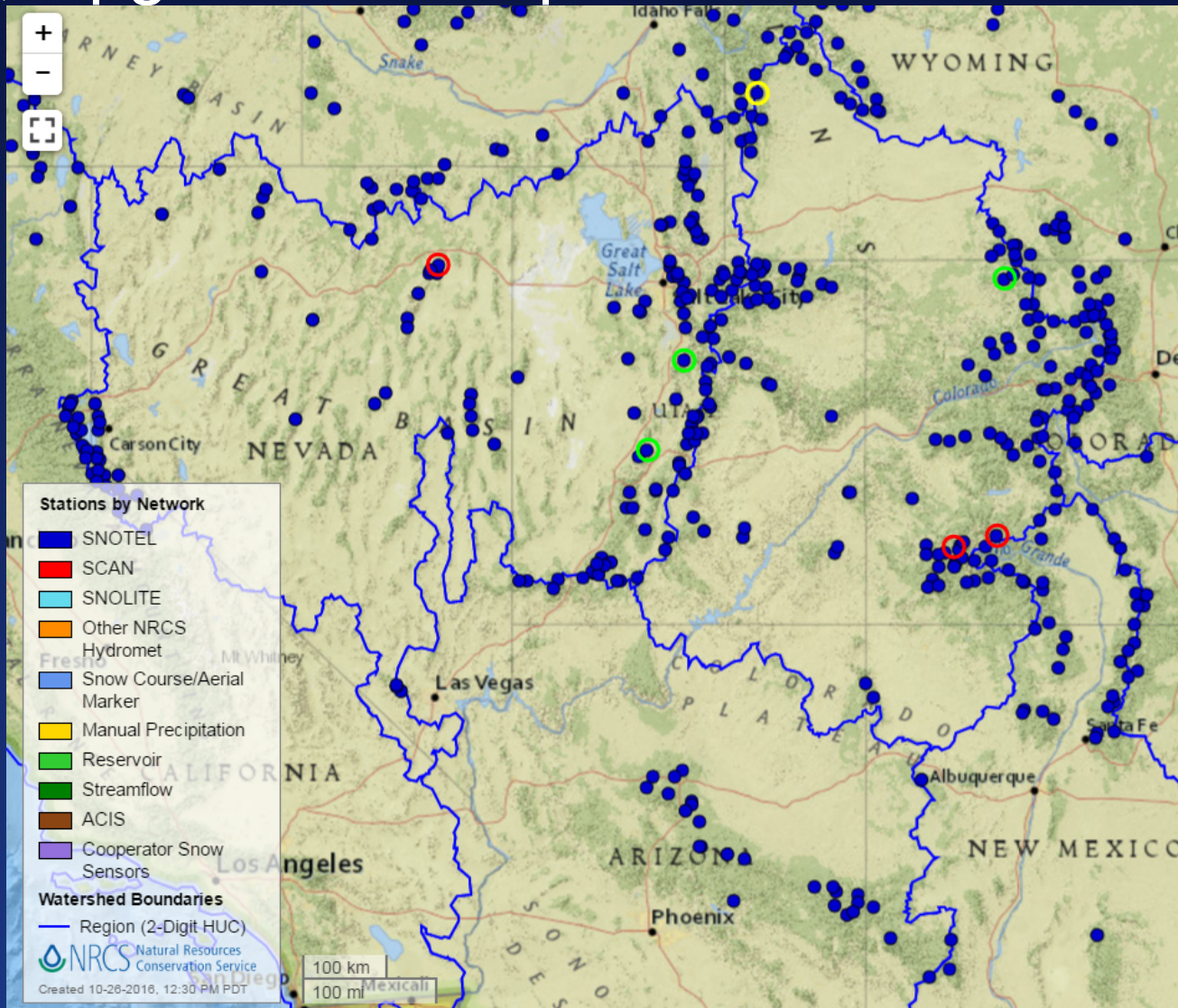
Provisional data, subject to revision

Station Name	Station Id	State Code	Network Code	Elevation	Latitude	Longitude	Start Date	End Date
Triple Peak	831	WY	SNTL	8500	42.76393	-110.59140	1985-08-19	2100-01-01

Impacted Sites

Station Name	Station Id	State Code	Network Code	Elevation	Latitude	Longitude	Start Date	End Date
Hole-in-Mountain	527	NV	SNTL	7900	40.94270	-115.09572	1980-07-20	2100-01-01
Red Mountain Pass	713	CO	SNTL	11200	37.89180	-107.71342	1980-07-18	2100-01-01
Slumgullion	762	CO	SNTL	11440	37.99080	-107.20327	1980-07-13	2100-01-01

New, Upgraded or Impacted SNOTEL Stations



Bobs Hollow Snotel Installation



Elkhead Divide Snotel Installation



Elkhead Divide Snotel Installation



Red Mountain Pass Snotel – Land Ownership Issue

- Site is on private land and landowner wants it removed
- Red Mountain Pass Snotel is a long term, high elevation site
- Critical for water supply forecasting in the Dolores, Gunnison and San Juan River Basins
- Option to purchase land
- Option to move site
- Option to discontinue site
- Outcome actively being negotiated

Slumgullion Snotel – Forest Disturbance



Hole-in-Mountain Avalanche



Hole-in-Mountain Avalanche



SNOTEL and AWDB Data Access

- Report Generator
<http://wcc.sc.egov.usda.gov/reportGenerator/>
- AWDB Web Service:
[http://www.wcc.nrcs.usda.gov/web service/
awdb web service landing.htm](http://www.wcc.nrcs.usda.gov/web_service/awdb_web_service_landing.htm)

Data Analysis and Mapping

- Interactive Map:
http://www.wcc.nrcs.usda.gov/snow/snow_map.html
- Snotel Update Report:
<http://wcc.sc.egov.usda.gov/reports/SelectUpdateReport.html>

Contact NRCS Snow Survey and Water Supply Forecasting Program

- <http://www.wcc.nrcs.usda.gov/contact/index.html>
- The Contact Help Center offers comprehensive contact choices based on subject matter
- And of course, you can always contact me directly:
angus.goodbody@por.usda.gov