

RECLAMATION

Managing Water in the West

USBR Updates:

Flaming Gorge

CRFS | November 16, 2017

Heather E. Patno

Hydraulic Engineer (hydrologic)

Upper Colorado Region

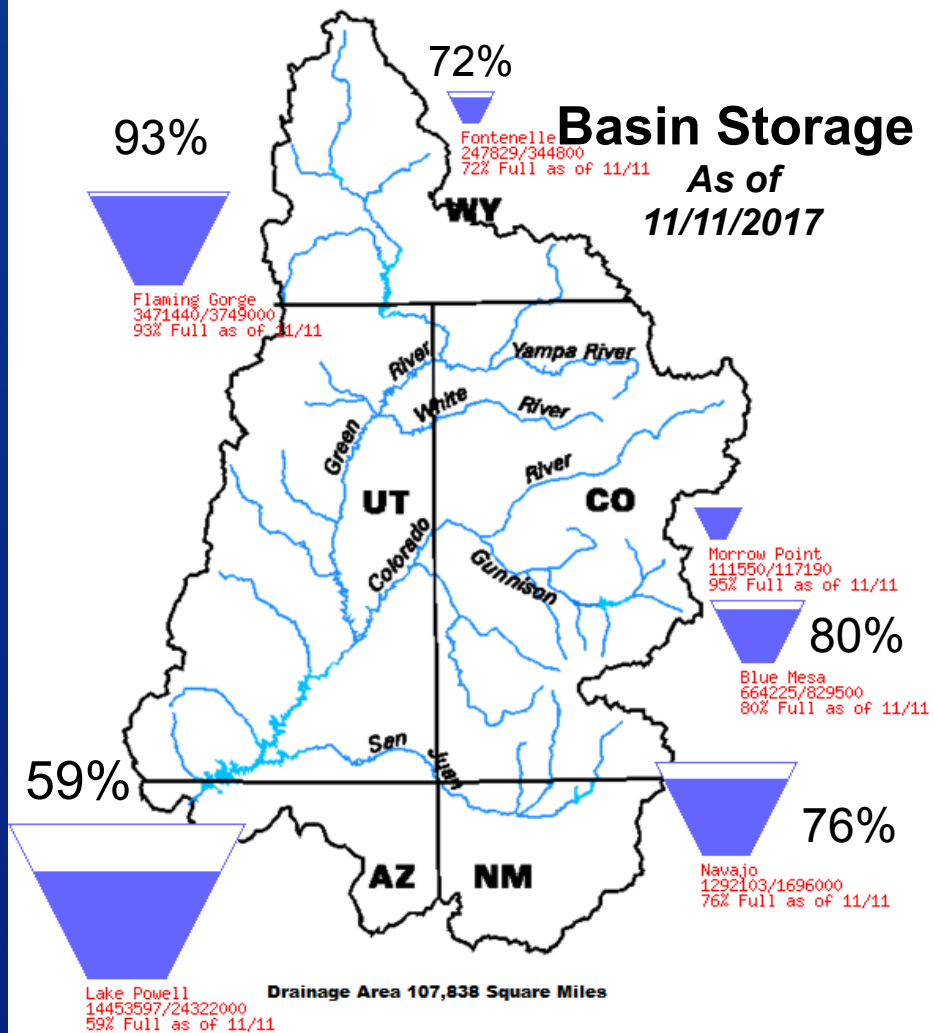


U.S. Department of the Interior
Bureau of Reclamation

Upper Basin Storage

Data Current as of:
11/12/2017

Upper Colorado River Drainage Basin



Water Year 2018 Forecasted Inflow Issued November - 2017

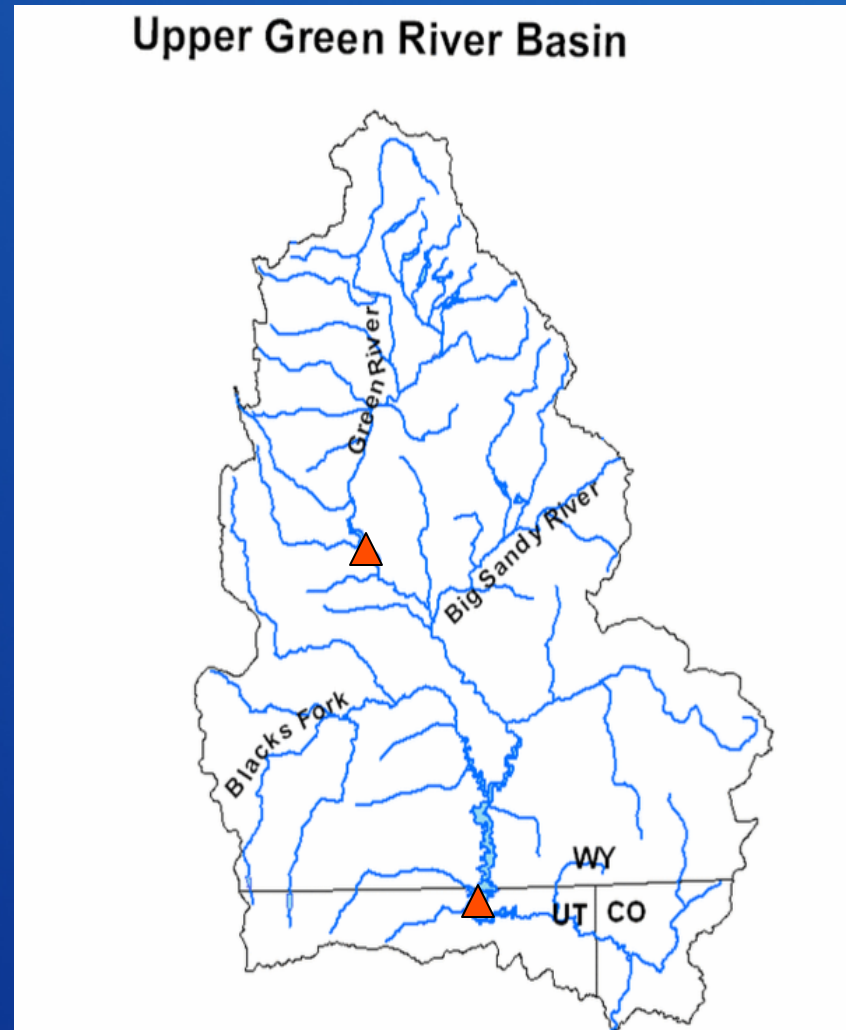
Reservoir	WY2018 Forecast (KAF)	Percent of Average ¹
Fontenelle	1,228	107%
Flaming Gorge	1,608	111%
Blue Mesa	837	88%
Navajo	823	77%
Powell	8,899	82%

¹ percent of average based on period 1981-2010.

RECLAMATION

Green River Operations

- Fontenelle
- Flaming Gorge

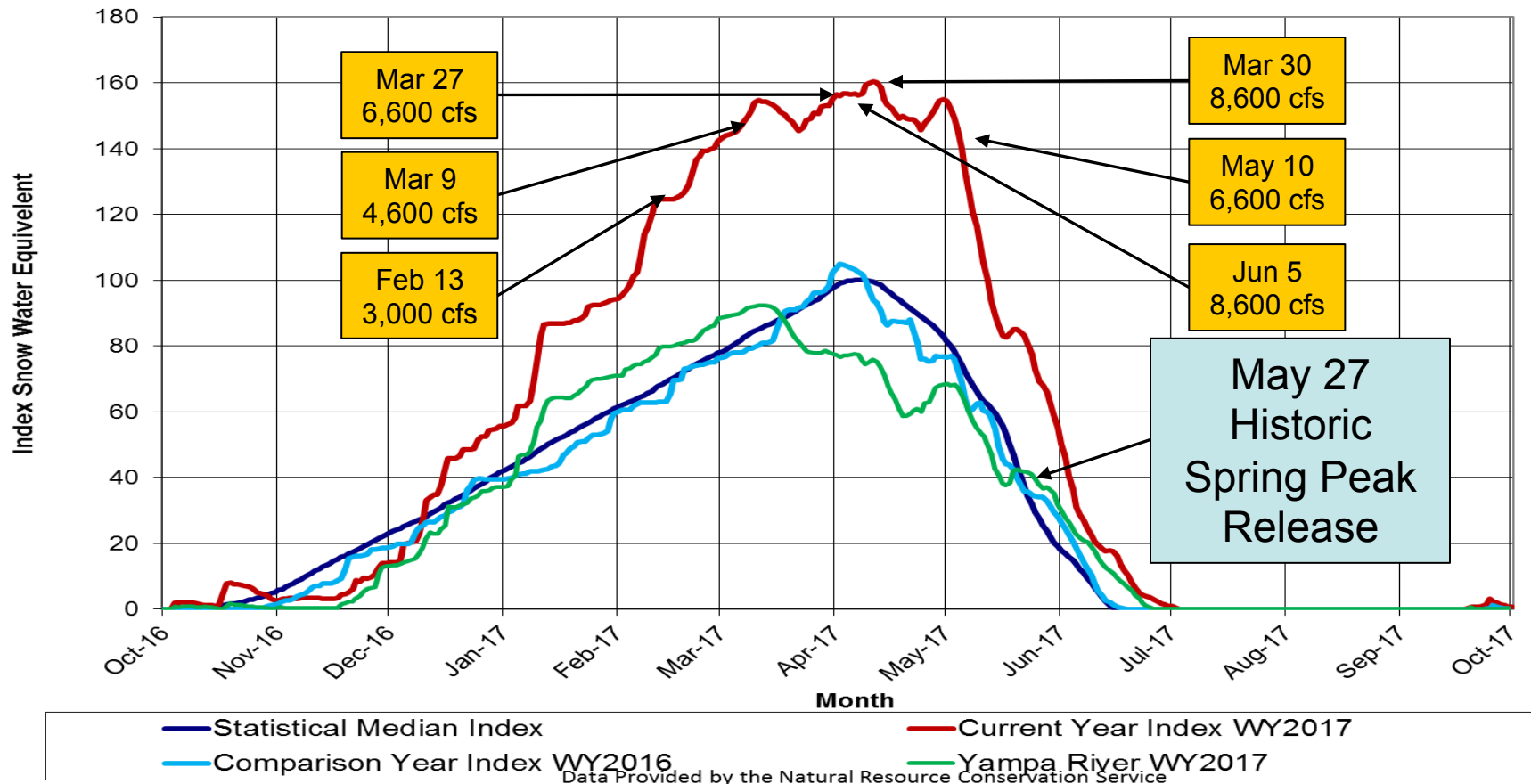


RECLAMATION

Flaming Gorge Activities 2017

Jan	Feb	Mar	Apr	May	Jun	OBS
1230	1650	2260	2260	2260	2180	2214
KAF	KAF	KAF	KAF	KAF	KAF	KAF
(126%)	(168%)	(231%)	(231%)	(231%)	(222%)	(226%)

Upper Green River Basin Snotel Tracking
Aggregate of 18 Snotel Sites above Flaming Gorge Reservoir



RECLAMATION

Flaming Gorge Activities 2017

- **Operational Actions**

- **January Final Forecast**
 - Flaming Gorge – 1230 KAF (126%)
 - Yampa – 1180 (95%)
- **February Final Forecast**
 - Flaming Gorge – 1650 KAF (168%)
 - Yampa – 1400 (113%)
- **February 13, 2017** email notification increasing Flaming Gorge releases within Record of Decision parameters from 1,800 cfs to 3,000 cfs by March 2
- **February Midmonth Forecast**
 - Flaming Gorge – 1950 KAF (199%)
 - Yampa – 1350 (110%)
- **March Final Forecast**
 - Flaming Gorge – 2260 KAF (231%)
 - Yampa – 1500 (121%)
- **March 6, 2017** email notification increasing releases to power plant capacity by March 9
- **March Midmonth Forecast**
 - Flaming Gorge – 2180 KAF (168%)
 - Yampa – 1400 (113%)
- **March 23, 2017** email notification increasing releases to 6,600 cfs by March 27
- **March 29, 2017** email notification increasing releases to 8,600 cfs by March 30
- **April Final Forecast**
 - Flaming Gorge – 2260 KAF (231%)
 - Yampa – 1050 (85%)
- **April Midmonth Forecast**
 - Flaming Gorge – 2260 KAF (231%)
 - Yampa – 910 (70%)

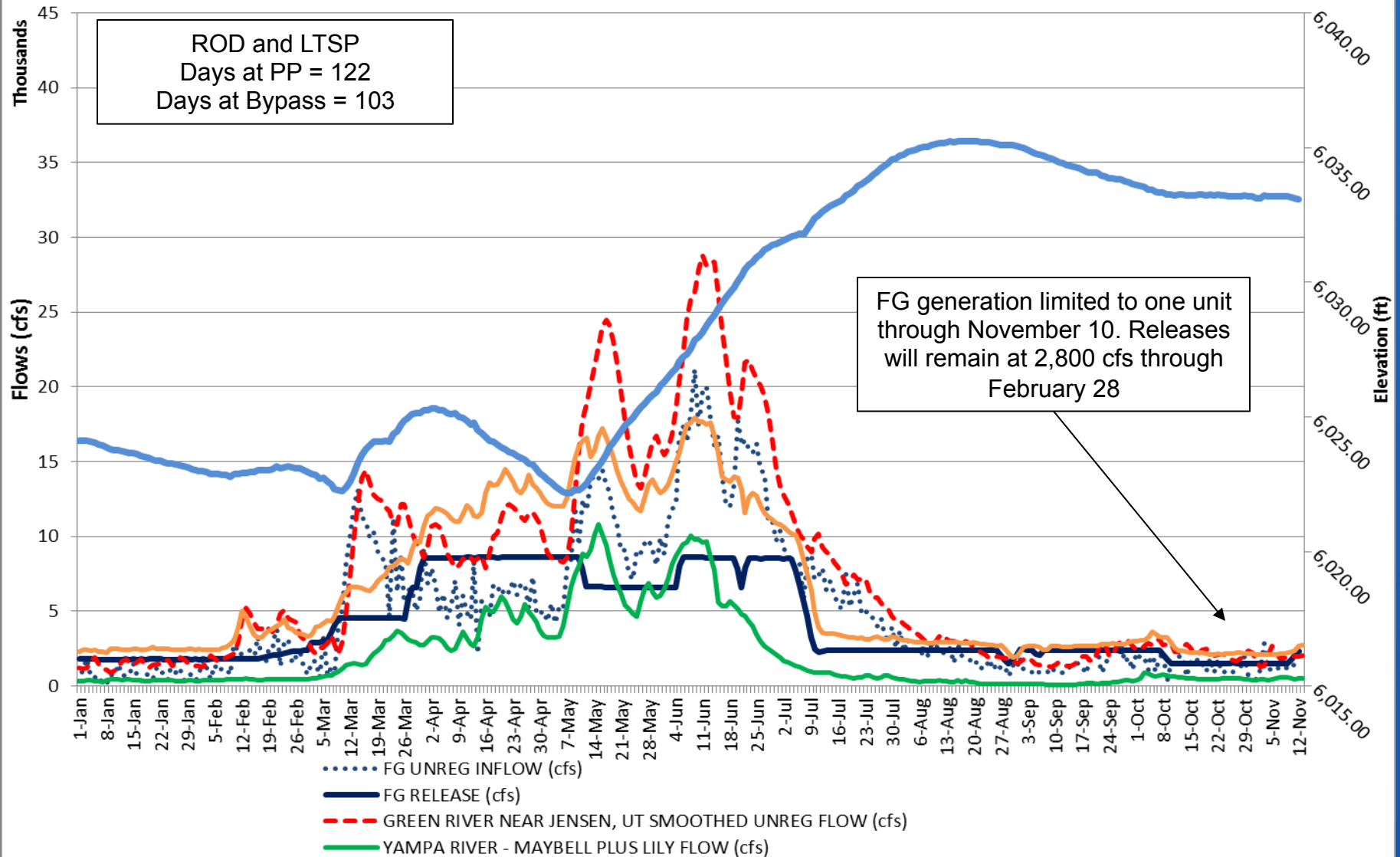
RECLAMATION

Flaming Gorge Activities 2017

- **Operational Actions**

- **May Final Forecast**
 - Flaming Gorge – 2260 KAF (231%)
 - Yampa – 1080 (87%)
- **May 10, 2017** email notification decreasing Flaming Gorge releases to 6,600 cfs through Memorial Day weekend
- **May Midmonth Forecast**
 - Flaming Gorge – 2260 KAF (231%)
- **June Final Forecast**
 - Flaming Gorge – 2180 KAF (222%)
 - Yampa – 1030 (83%)
- **June 2, 2017** email notification increasing releases to power plant capacity and full bypass on Monday, June 5
- **June Midmonth Forecast**
 - Flaming Gorge – 2180 KAF (222%)
- **June 23, 2017** email notification decreasing releases to base flows of 2,400 cfs beginning on July 5, 2017, after July 4 weekend
- **July Final Forecast**
 - Flaming Gorge – 2210 KAF (226%)
- **July Midmonth Forecast**
 - Flaming Gorge – 2210 KAF (226%)
- **OBSERVED VOLUME**
 - Flaming Gorge – 2214 KAF (226%)
 - Yampa – 1050 (85%)

Flaming Gorge Releases and Green and Yampa River Flows 2017



RECLAMATION

Green River Projects

- Green River Evaluation and Analysis Team (GREAT) review of Flow Recommendations
- Future NEPA likely
- Adaptive management and implementation of experimental releases
- Continued stakeholder communication