

NRCS Agency Updates and 2018 Verification

Gus Goodbody

United States Department of Agriculture
Natural Resources Conservation Service
National Water and Climate Center
Portland, Oregon

Presented at
Colorado River Forecast Service Meeting
Salt Lake City, UT
15 November 2018

Snow Survey and Water Supply Forecasting Program

- Significantly reduced staffing, especially at National Water and Climate Center (>50% reduction from 2013)
- Suspension of January and June water supply forecasts due to staffing shortage
- 9 positions at National Water and Climate Center are on NRCS priority hire list including hydrologists and climatologist
- NRCS reorganization into FPAC (Farm Production and Conservation) within USDA along with FSA and RMA

Colorado Data Collection Office

- Red Mountain Pass site land purchased by consortium of water supply interests
- 2 snow courses affected by wild fire: La Veta Pass and Weston

Slumgullion Snotel – Forest Disturbance, 2016. Stationarity impact



Trapper Lake Snotel, White River Basin, Colorado

Burned in 2002 – obvious impact to data stream
noticed in 2016 (windy winter?). Normals removed.



Utah Data Collection Office

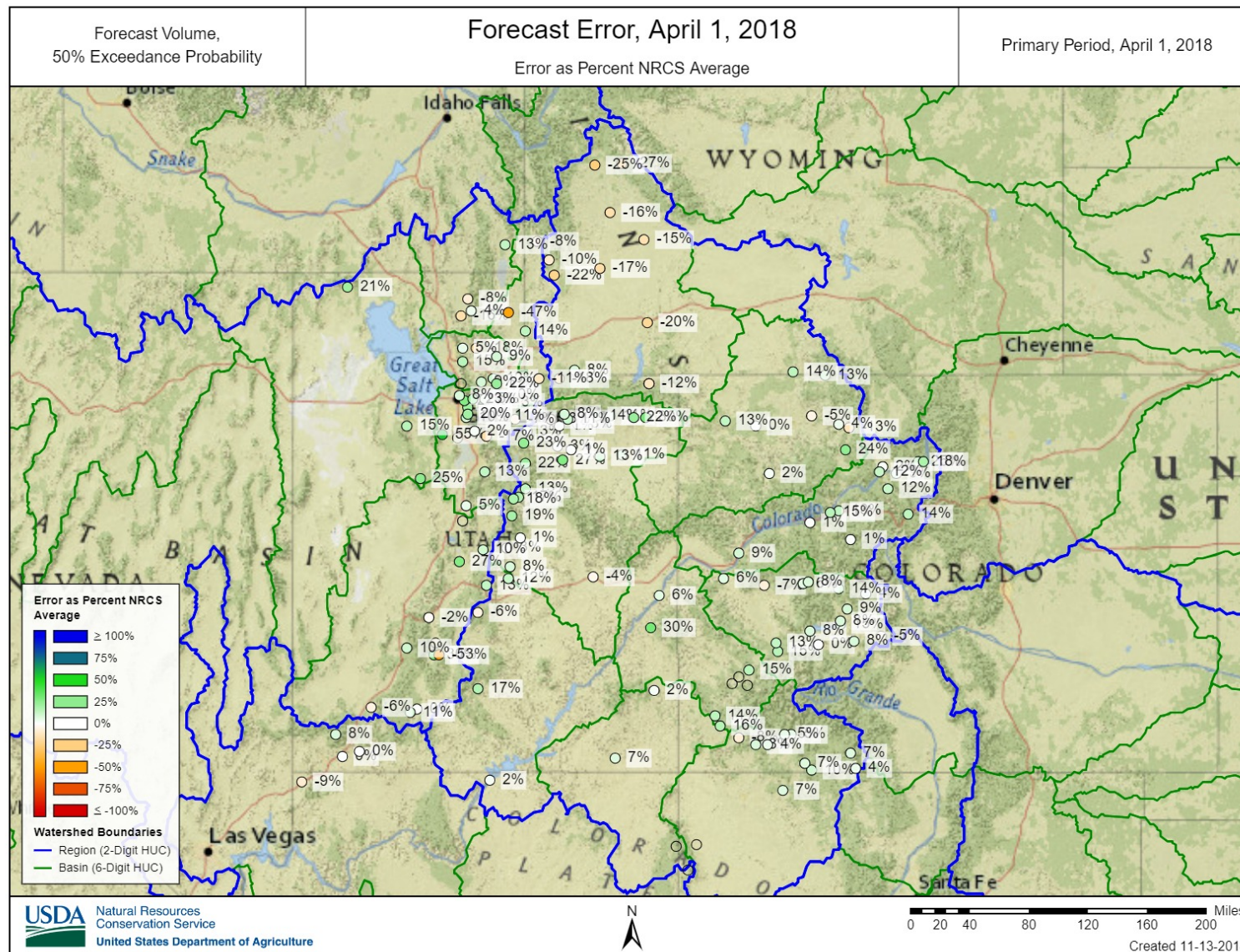
- 4 sites in domain within fire boundaries but none actually burned through the sites
- Potential impact to Clear Creek #2
- Lambs Canyon, Utah new installation plans progressing
- 3 sites upgraded with new shelters and equipment

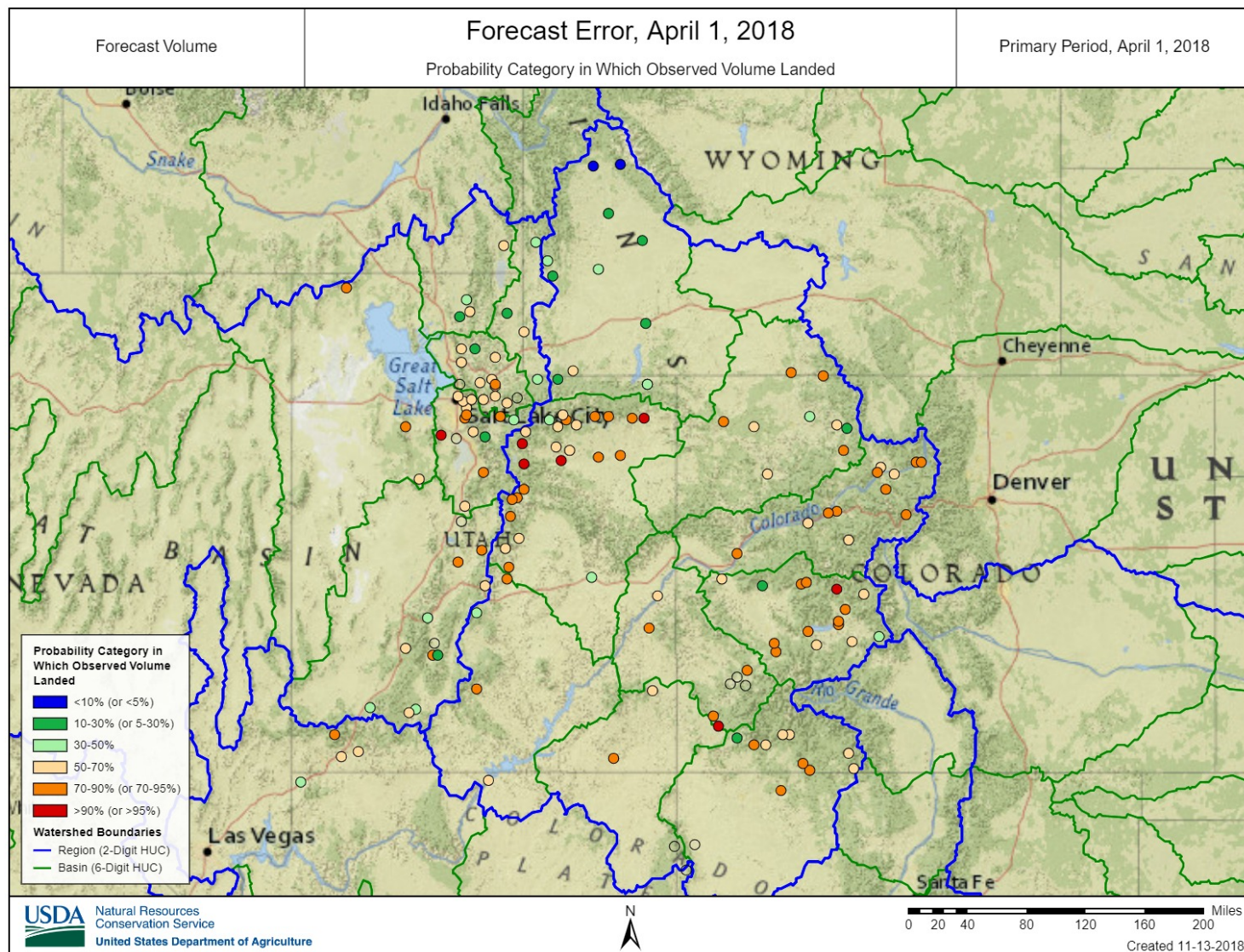
Idaho Data Collection Office

- East Rim Divide Snotel impacted by wildfire in September. Still reporting but severity and impact to surrounding canopy unknown
- Pocket Creek Snotel will be relocated in summer of 2019 due to shrinking and swelling soils at current site location

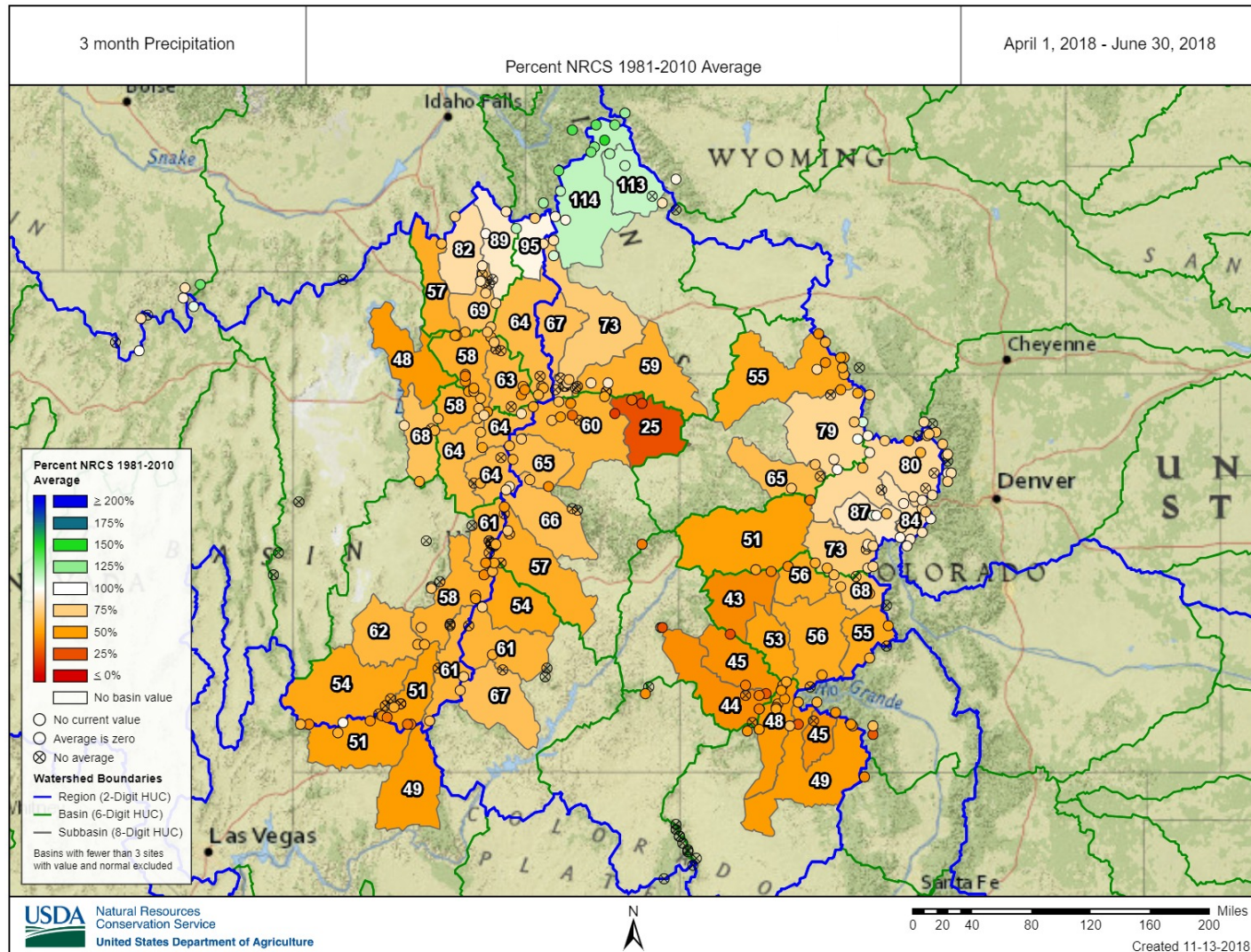
New Tools and Website

- National Water And Climate Center web pages are migrating:
<https://www.nrcs.usda.gov/wps/portal/wcc/home>
- Interactive Map Enhancements (update your bookmarks)
 - Soil Moisture and Temperature elements
 - Forecast Verification Parameters
 - Image Export Function
 - Bug fixes

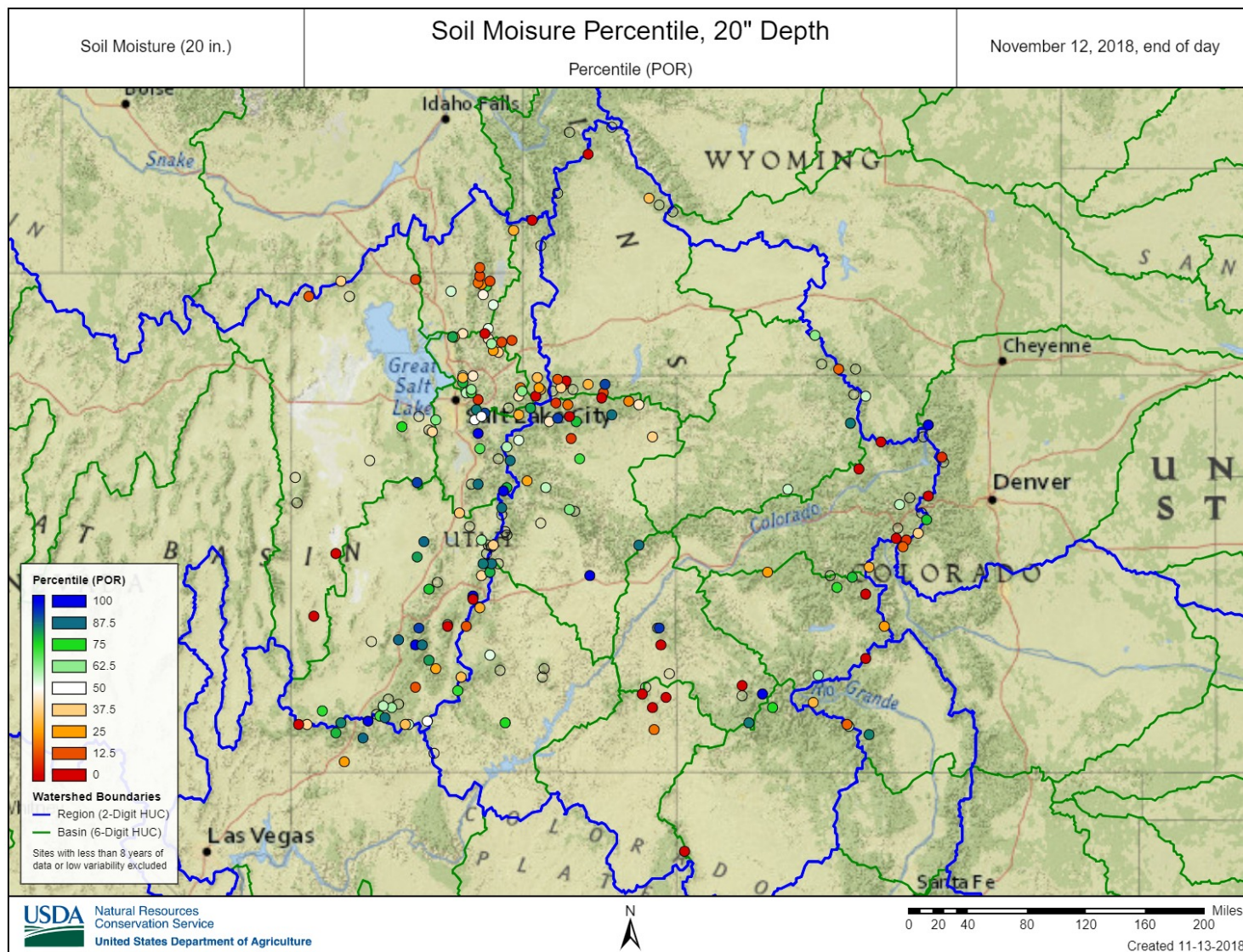




April-June Precipitation, 2018



*Limited
POR



Forecast Visualization and Verification

Water Supply Forecast Chart

State

Colorado

Basin

GUNNISON RIVER BASIN

Publication Year

2018

Publication Date

April 1

Forecast Periods

All

February-July

February-September

March-July

March-August

March-September

April-July

April-August

April-September

May-July

May-September

June-July

June-September

Normal Type:

Average

Median

Label Units:

Volume in KAF

Percent of Normal

Forecast Labels:

All Exceedances

50% Exceedance Only

Include on Chart:

Observed

with label

Normal

with label

Max

with label

Min

with label

Years of Observed Data

with year

with year

with year

Display Options:

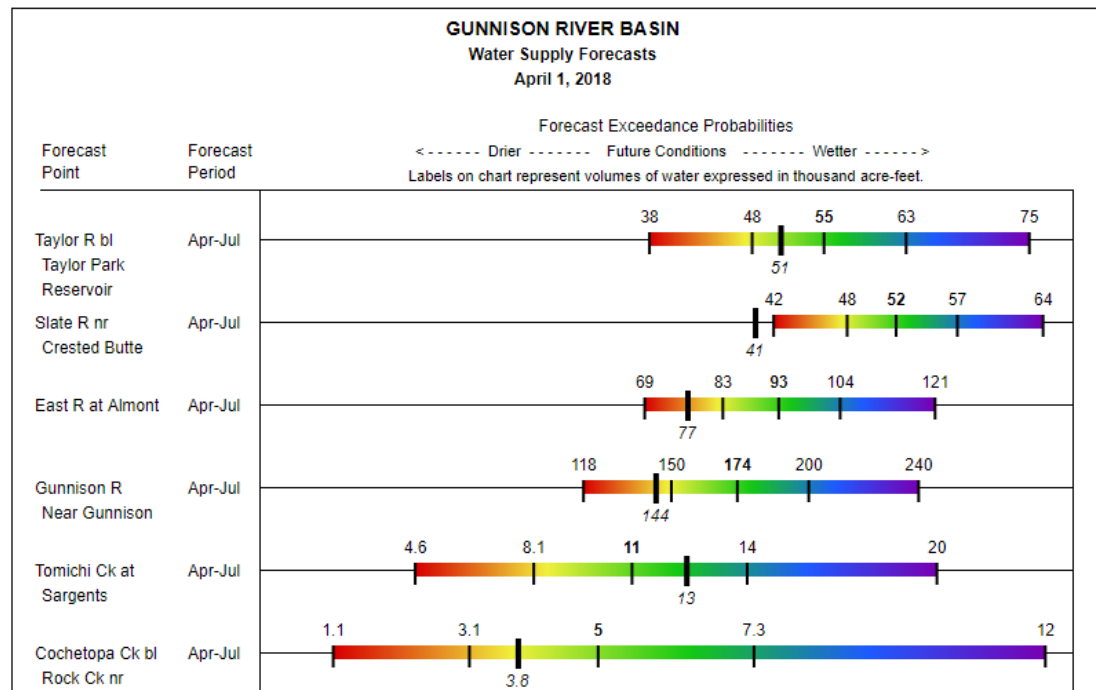
Only Show Points With Forecast For Selected Period

Chart Width: 800

Some web browsers may not support image export. Tested in Chrome 55, Firefox 50, and Safari 11.

Export SVG

Export PNG



SNOTEL and AWDB Data Access

- Report Generator
<http://wcc.sc.egov.usda.gov/reportGenerator/>
- AWDB Web Service:
http://www.wcc.nrcs.usda.gov/web_service/awdb_web_service_landing.htm

Contact NRCS Snow Survey and Water Supply Forecasting Program

- <https://www.nrcs.usda.gov/wps/portal/wcc/home/aboutus/contactUs>
- The Contact Help Center offers comprehensive contact choices based on subject matter
- And of course, you can always contact me directly: angus.goodbody@por.usda.gov