

Current Conditions and Forecasts

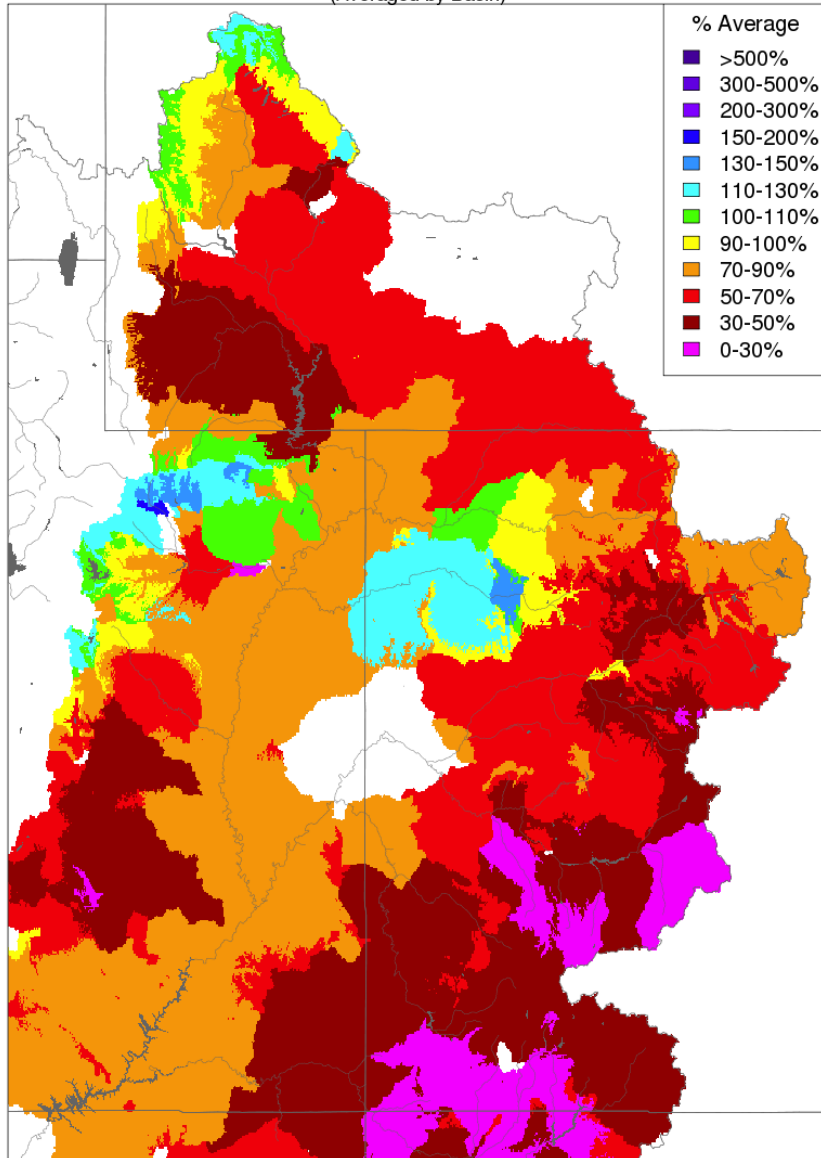
CBRFC / NRCS

CRFS March 29, 2018

March 1-28 Precipitation

Month to Date Precipitation - March 28 2018

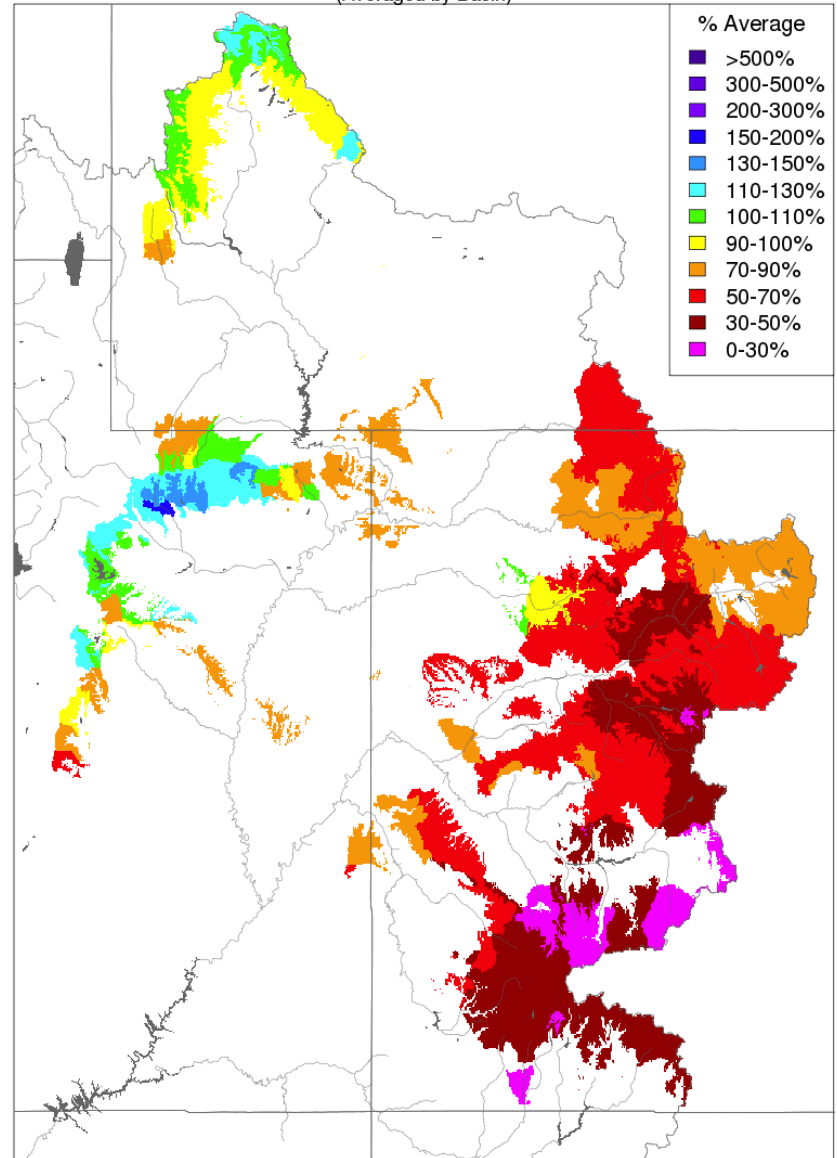
(Averaged by Basin)



Prepared by NOAA, Colorado Basin River Forecast Center
Salt Lake City, Utah, www.cbrfc.noaa.gov

Month to Date Precipitation - March 28 2018

(Averaged by Basin)

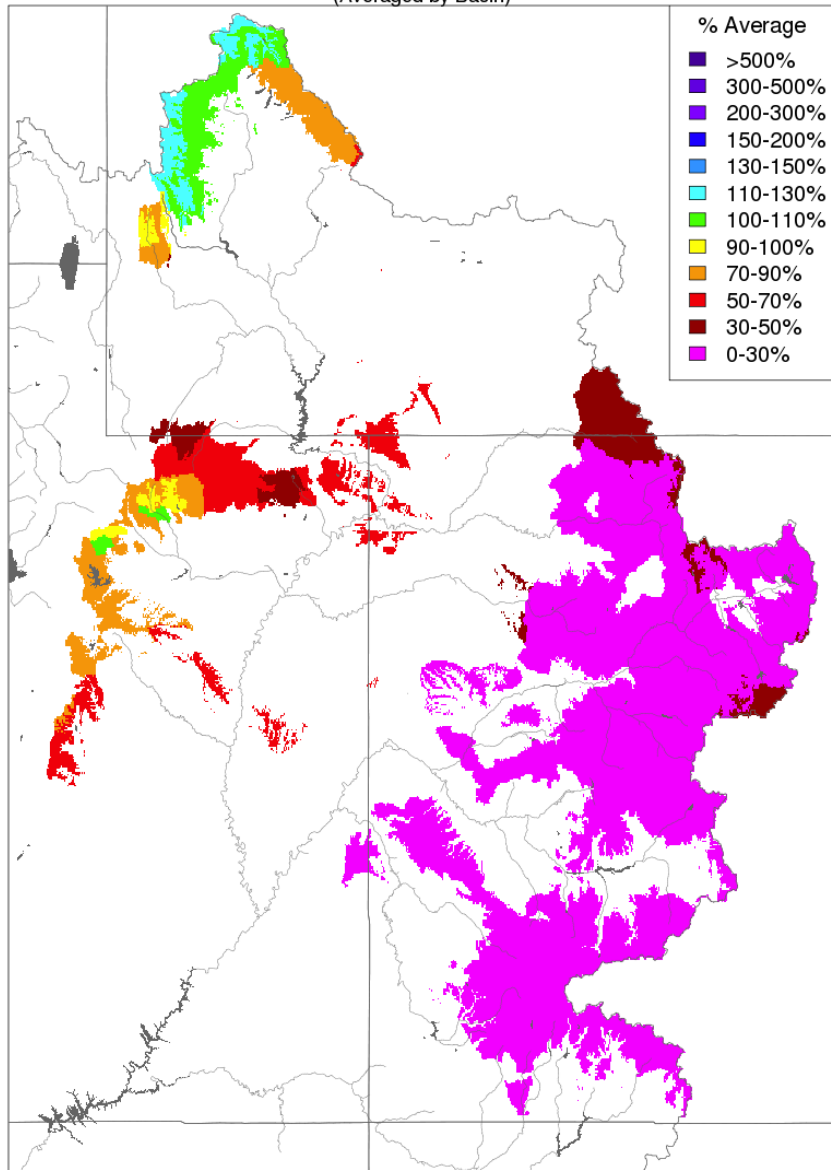


Prepared by NOAA, Colorado Basin River Forecast Center
Salt Lake City, Utah, www.cbrfc.noaa.gov

March Precipitation – Wetter 2nd half of month

Month to Date Precipitation - March 15 2018

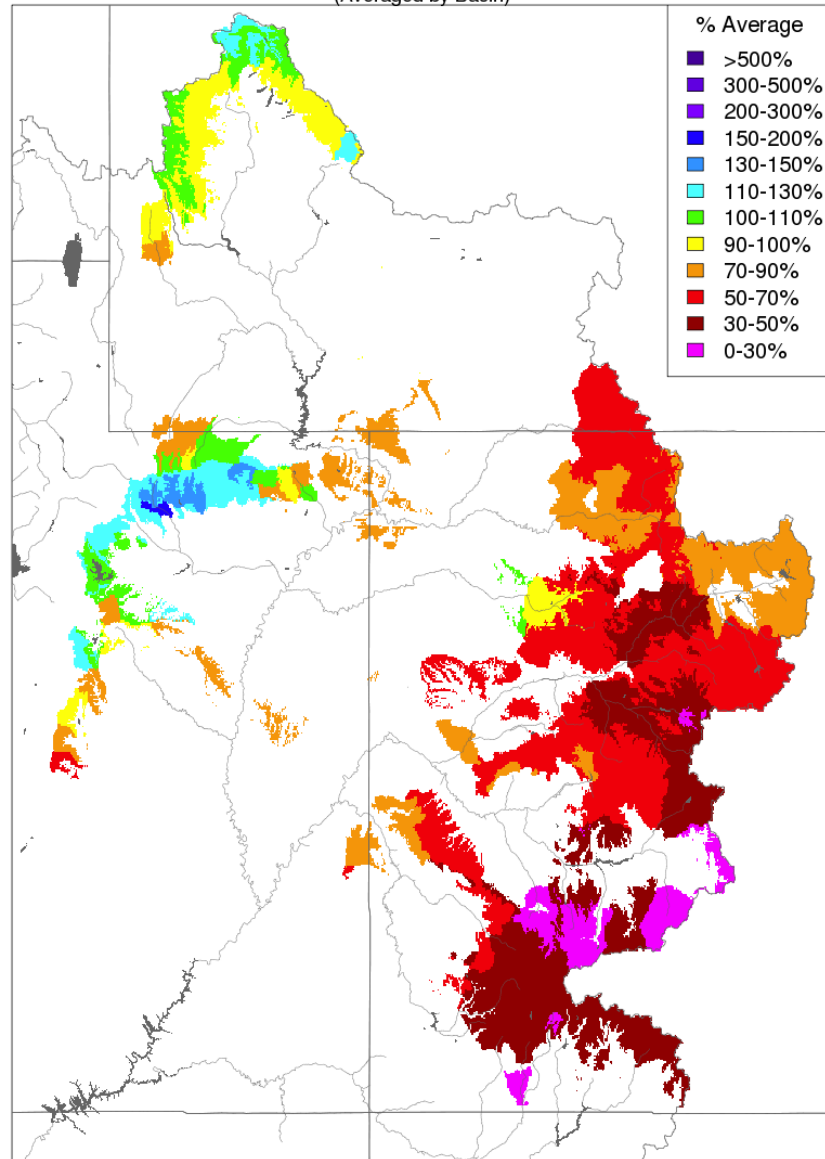
(Averaged by Basin)



Prepared by NOAA, Colorado Basin River Forecast Center
Salt Lake City, Utah, www.cbrfc.noaa.gov

Month to Date Precipitation - March 28 2018

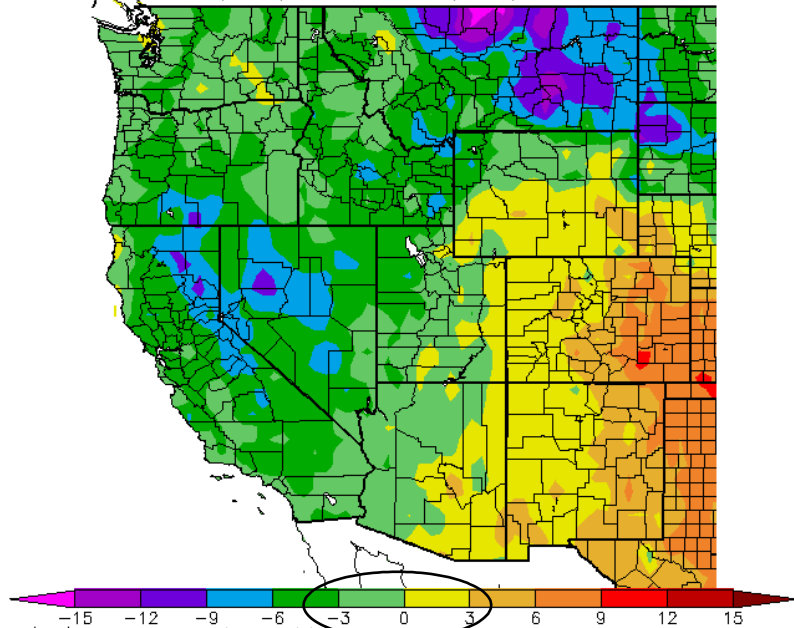
(Averaged by Basin)



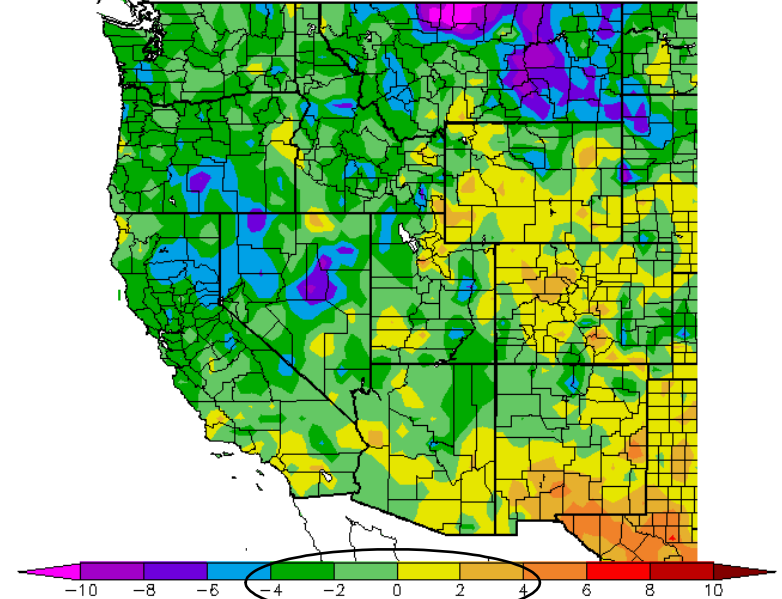
Prepared by NOAA, Colorado Basin River Forecast Center
Salt Lake City, Utah, www.cbrfc.noaa.gov

March Temperatures – Somewhat seasonal

Av. Max. Temperature dep from Ave (deg F)
2/25/2018 – 3/26/2018



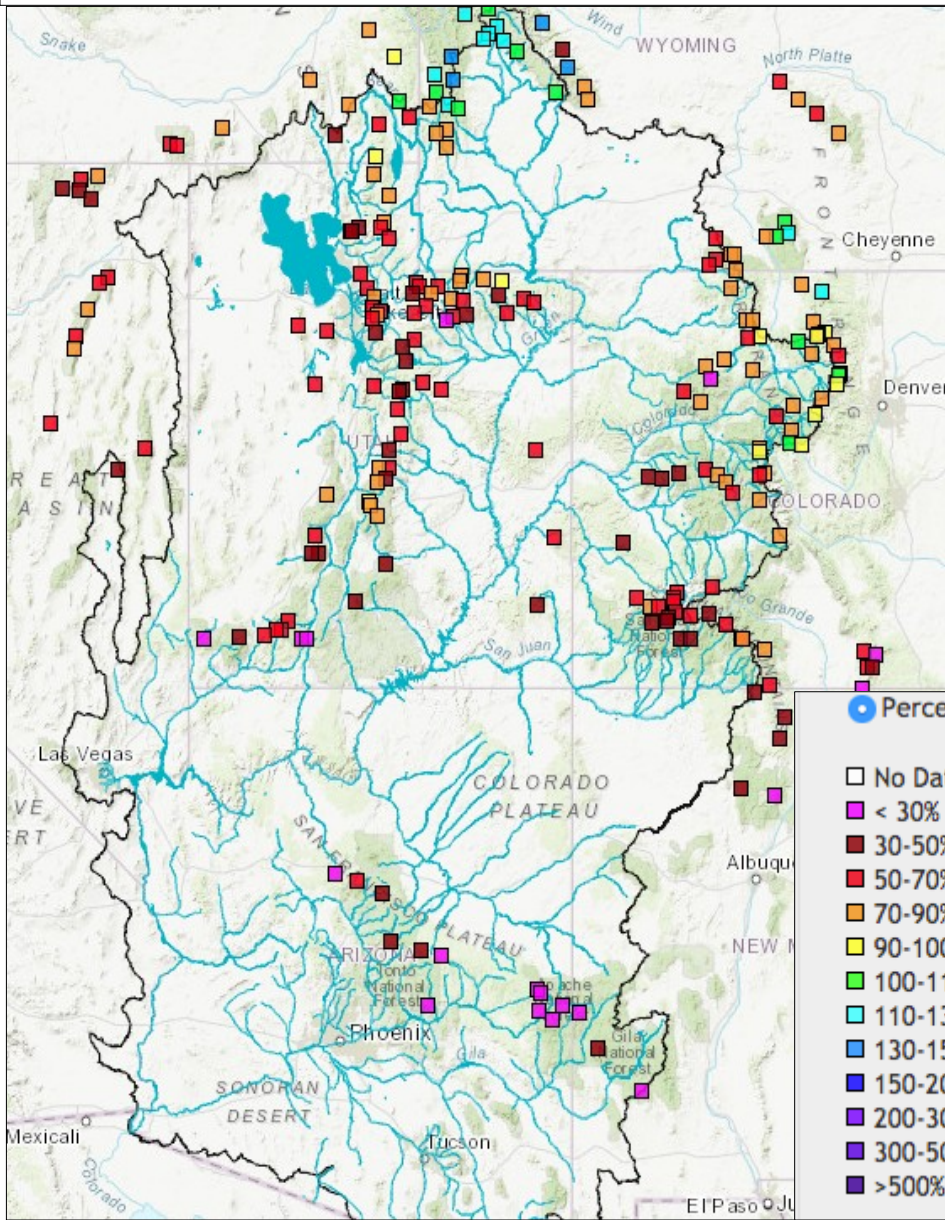
Av. Min. Temperature dep from Ave (deg. F)
2/25/2018 – 3/26/2018



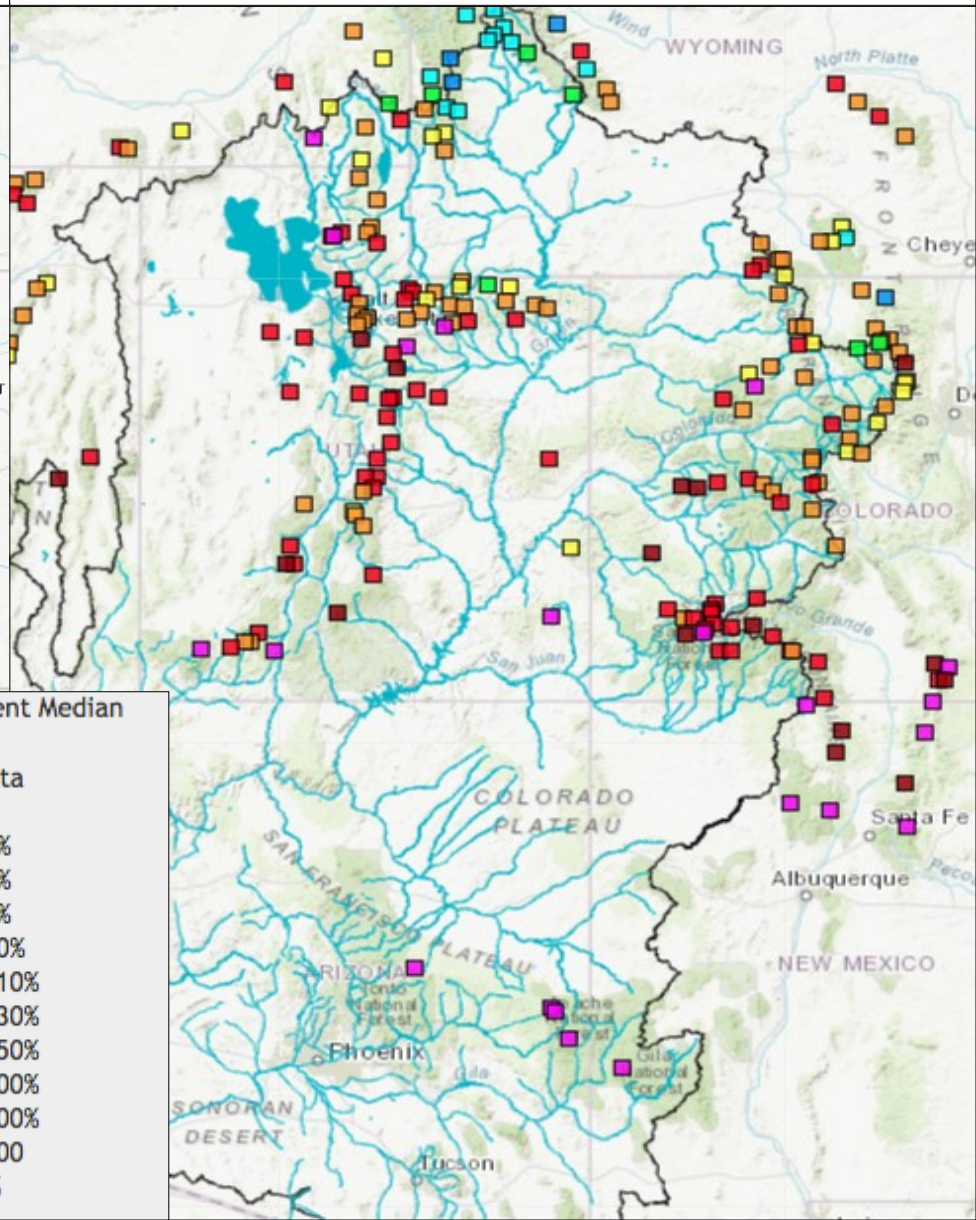
The message: We didn't devastate what snowpack we have

Snowpack Conditions (% of Median) - SNOTEL SITES

March 1, 2018



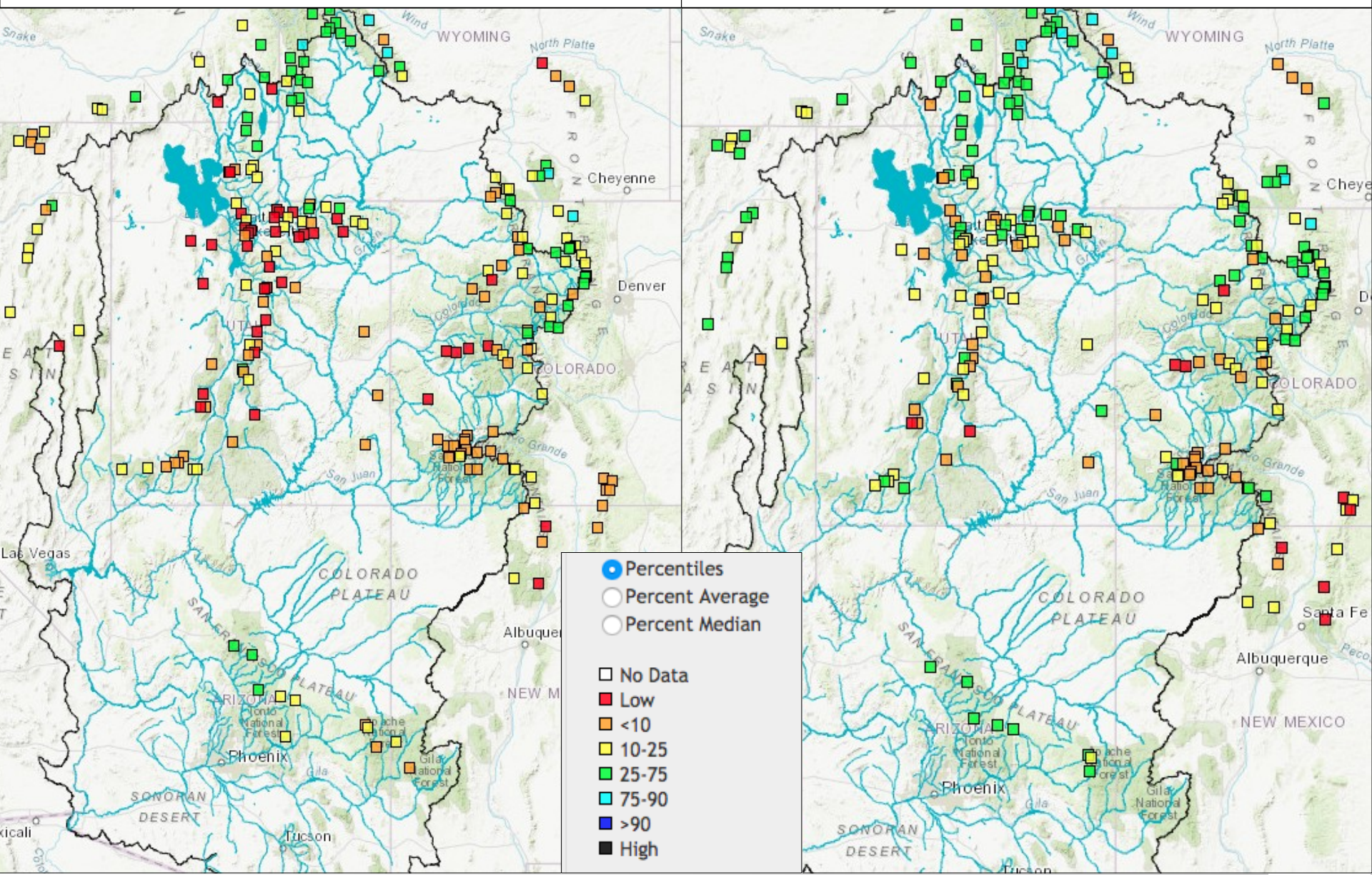
March 28, 2018



Snowpack Conditions (Percentiles - historical ranking) - SNOTEL SITES

March 6, 2018

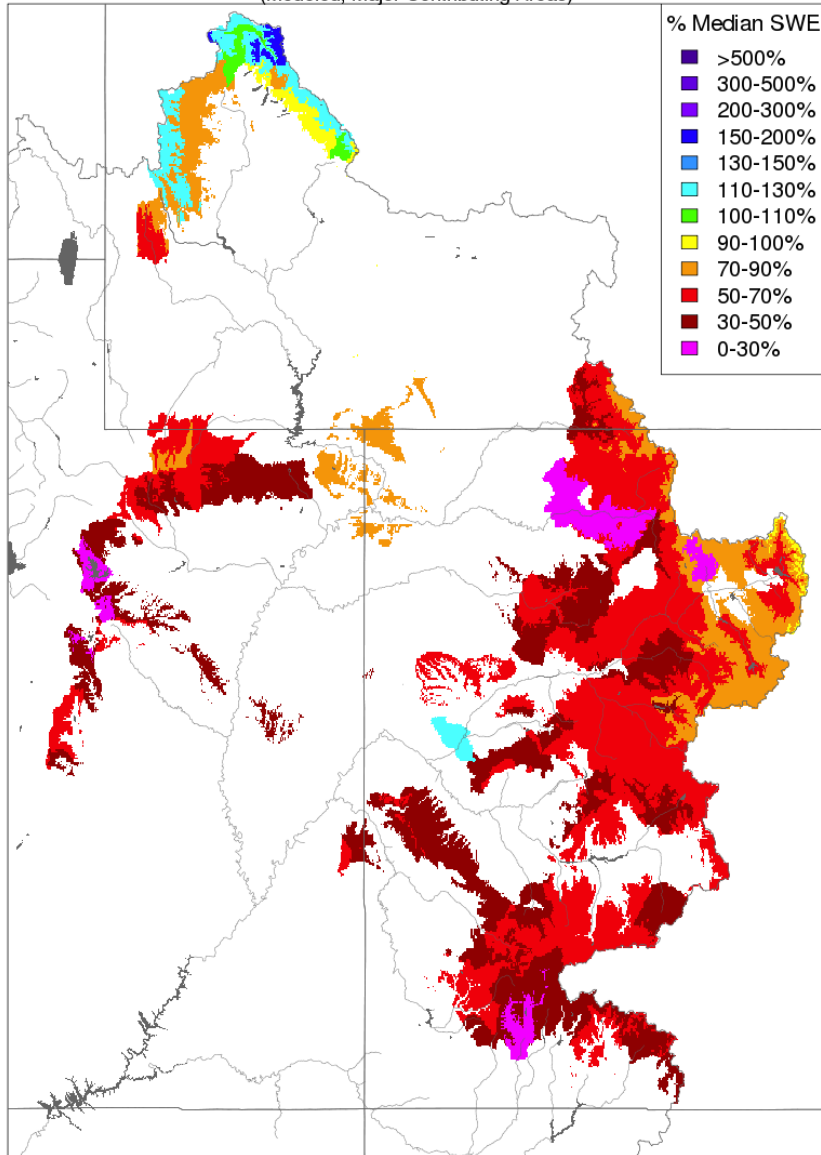
March 28, 2018



CBRFC Model Snow

Snow Conditions - March 01 2018

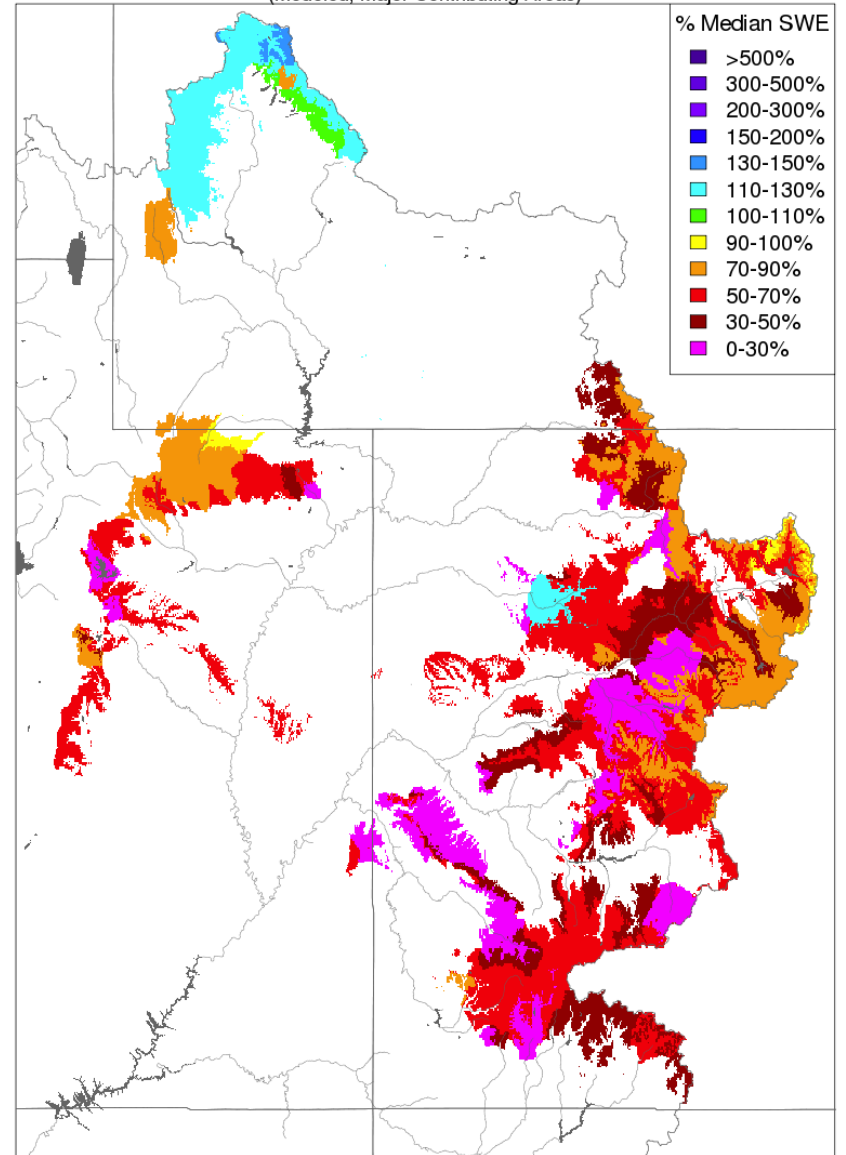
(Modeled, Major Contributing Areas)



Prepared by NOAA, Colorado Basin River Forecast Center
Salt Lake City, Utah, www.cbrfc.noaa.gov

Snow Conditions - March 28 2018

(Modeled, Major Contributing Areas)

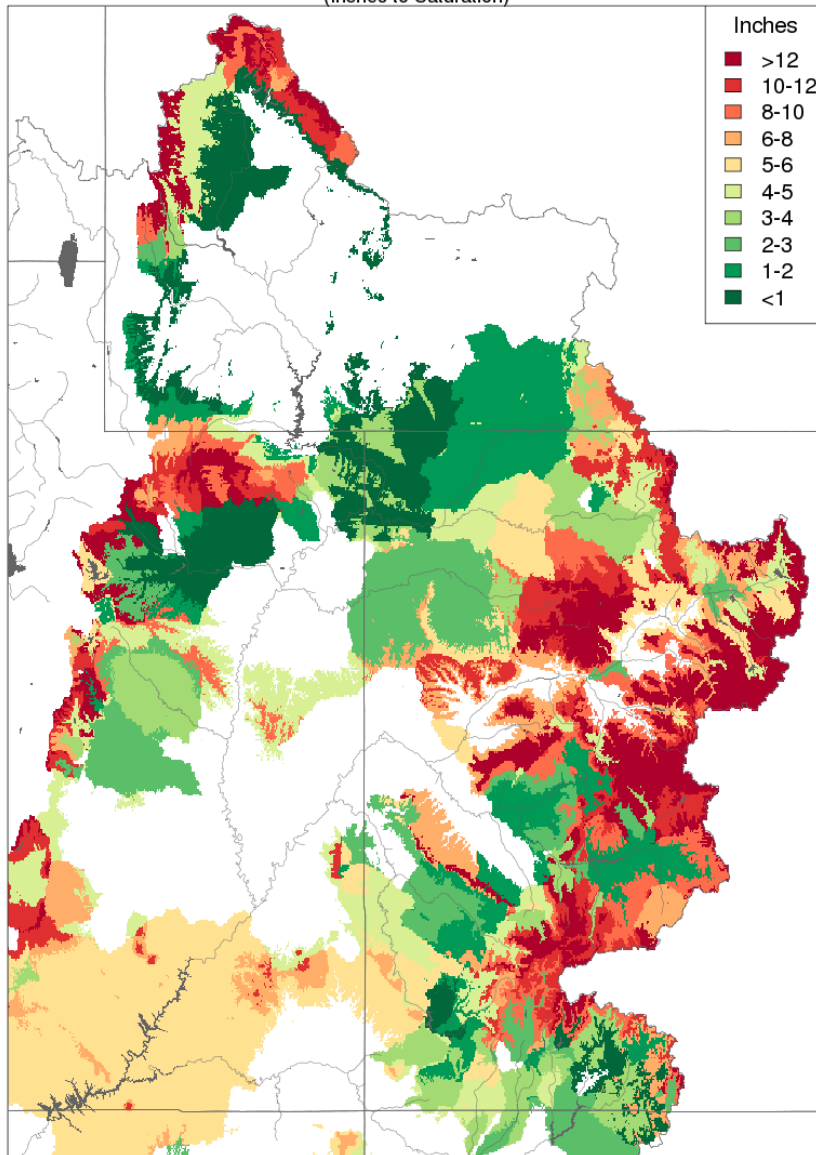


Prepared by NOAA, Colorado Basin River Forecast Center
Salt Lake City, Utah, www.cbrfc.noaa.gov

CBRFC Model Soil Saturation – 2017 vs 2018

Soil Moisture - March 27 2017

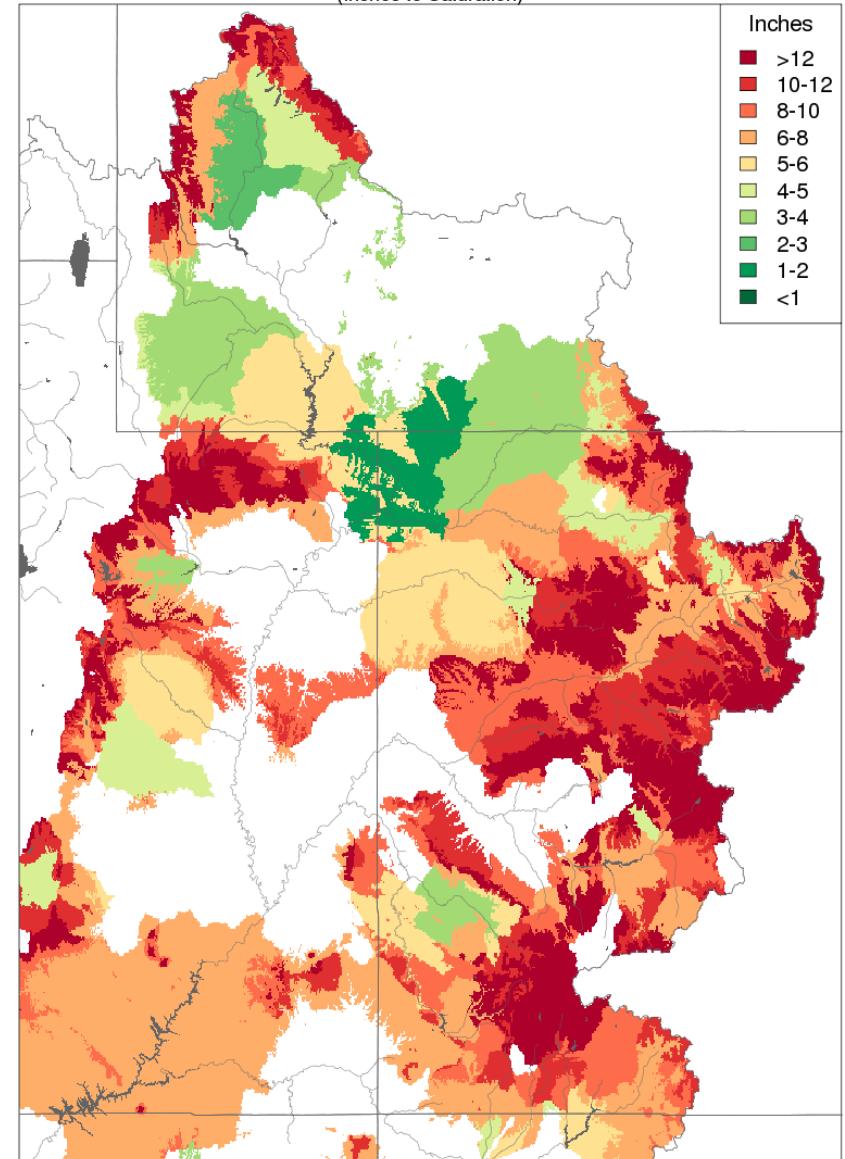
(Inches to Saturation)



Prepared by NOAA, Colorado Basin River Forecast Center
Salt Lake City, Utah, www.cbrfc.noaa.gov

Soil Moisture - March 27 2018

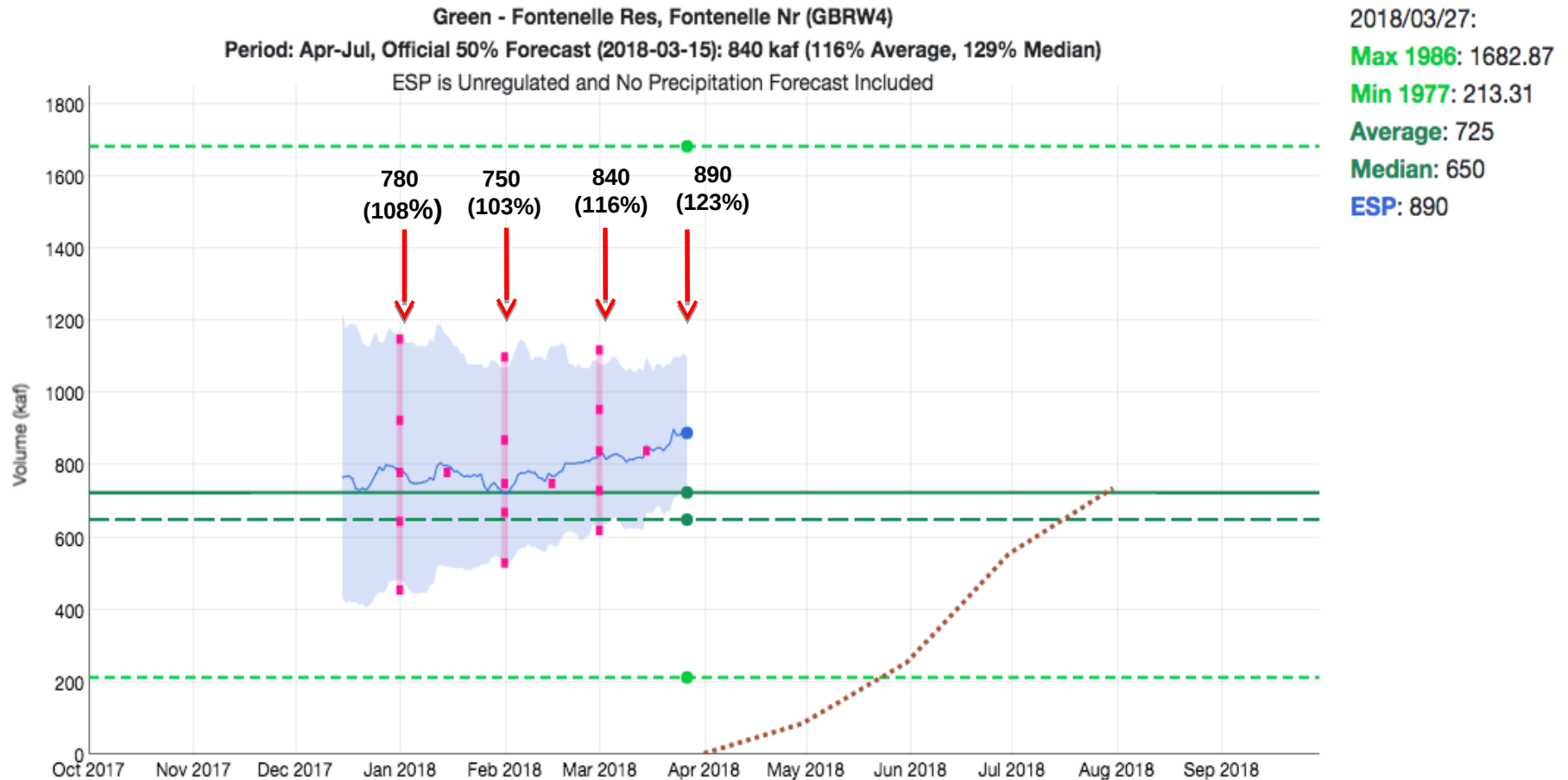
(Inches to Saturation)



Prepared by NOAA, Colorado Basin River Forecast Center
Salt Lake City, Utah, www.cbrfc.noaa.gov

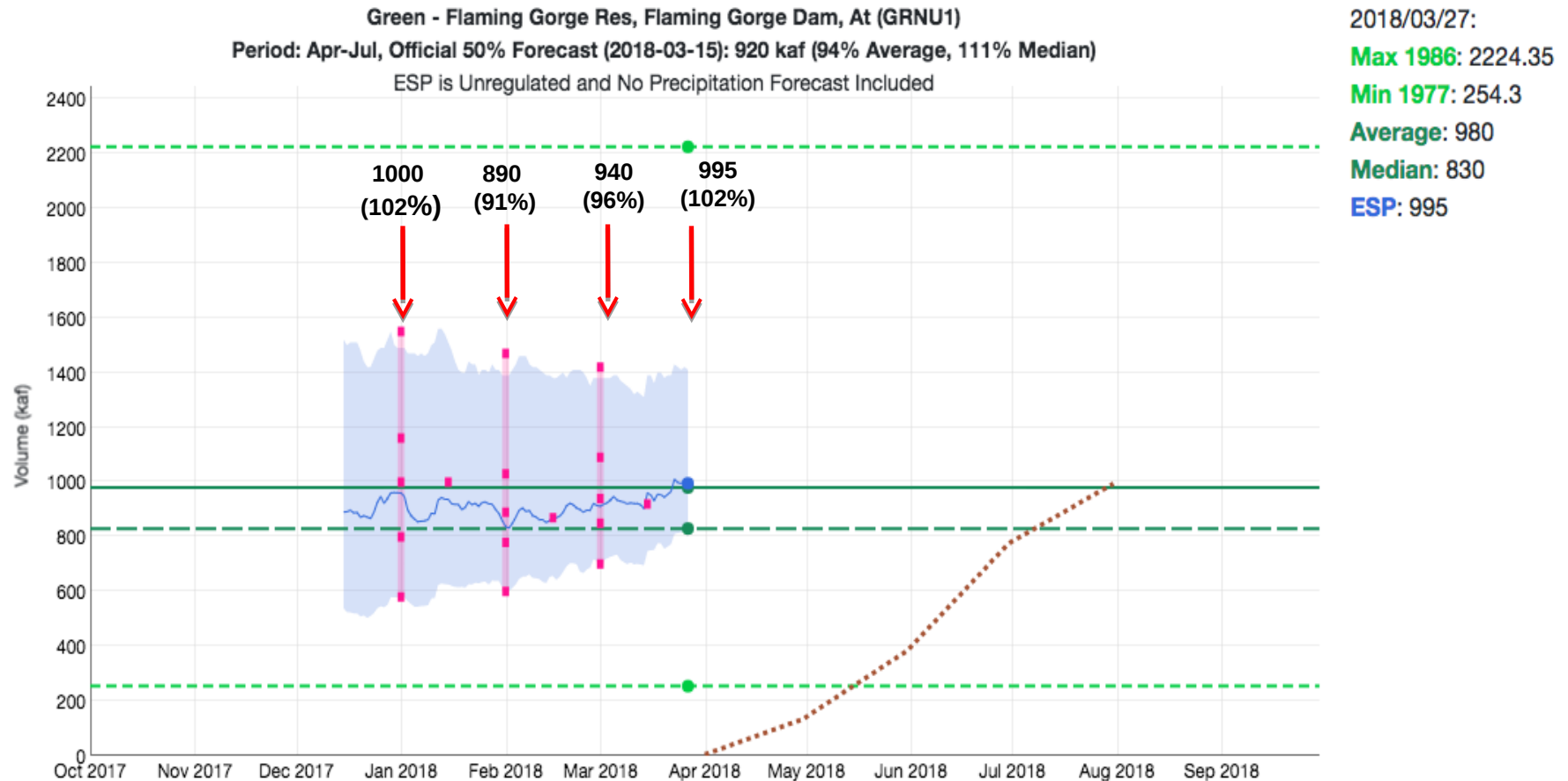
Forecast Evolution Plot – Fontenelle

Water Supply Forecast



Forecast Evolution Plot – Flaming Gorge

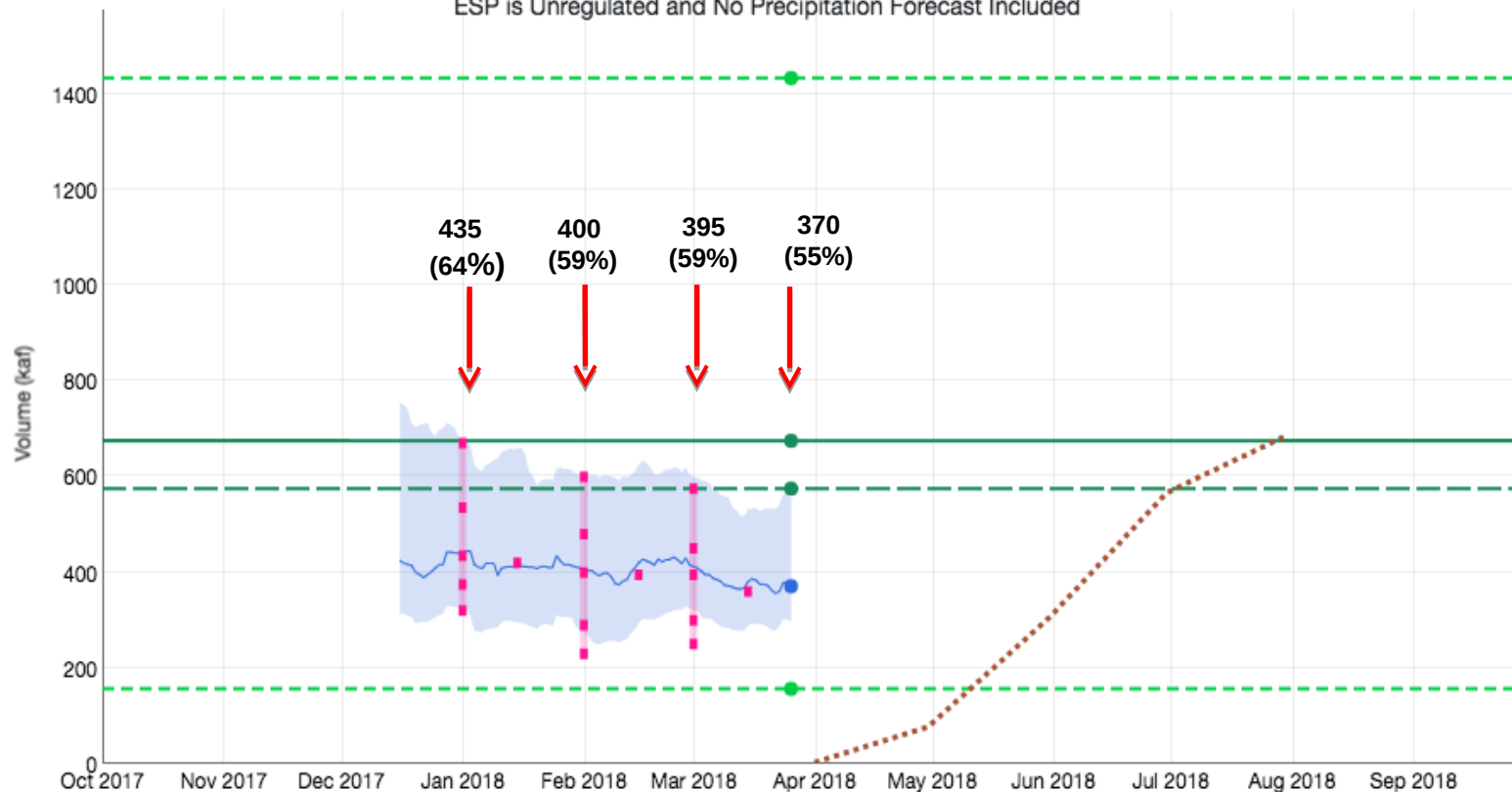
Water Supply Forecast



Forecast Evolution Plot - Blue Mesa

Water Supply Forecast

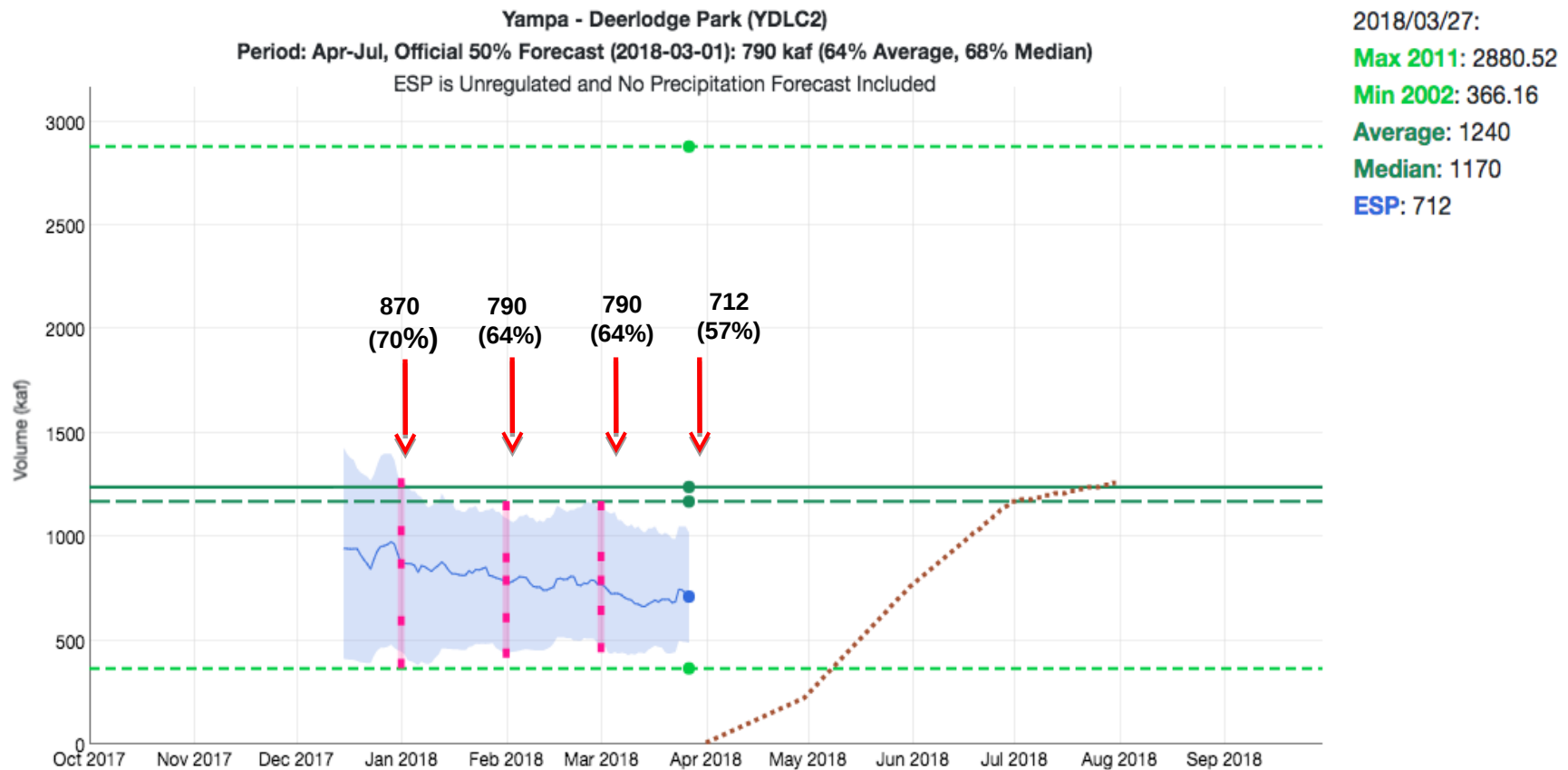
Gunnison - Blue Mesa Res (BMDC2)
Period: Apr-Jul, Official 50% Forecast (2018-03-15): 360 kaf (53% Average, 63% Median)
ESP is Unregulated and No Precipitation Forecast Included



2018/03/26:
Max 1984: 1433.01
Min 2002: 156.55
Average: 675
Median: 575
ESP: 371

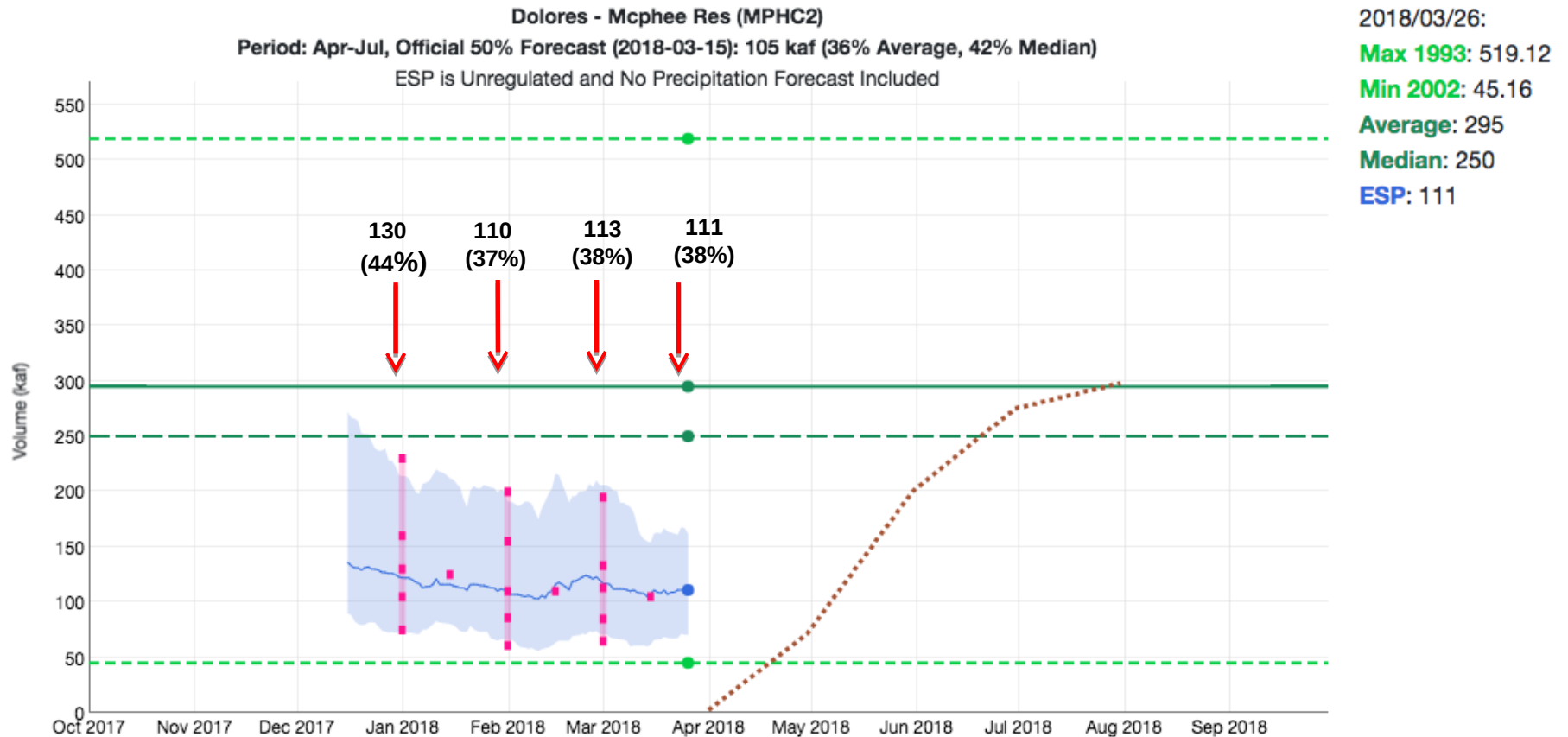
Forecast Evolution Plot – Yampa at Deerlodge

Water Supply Forecast



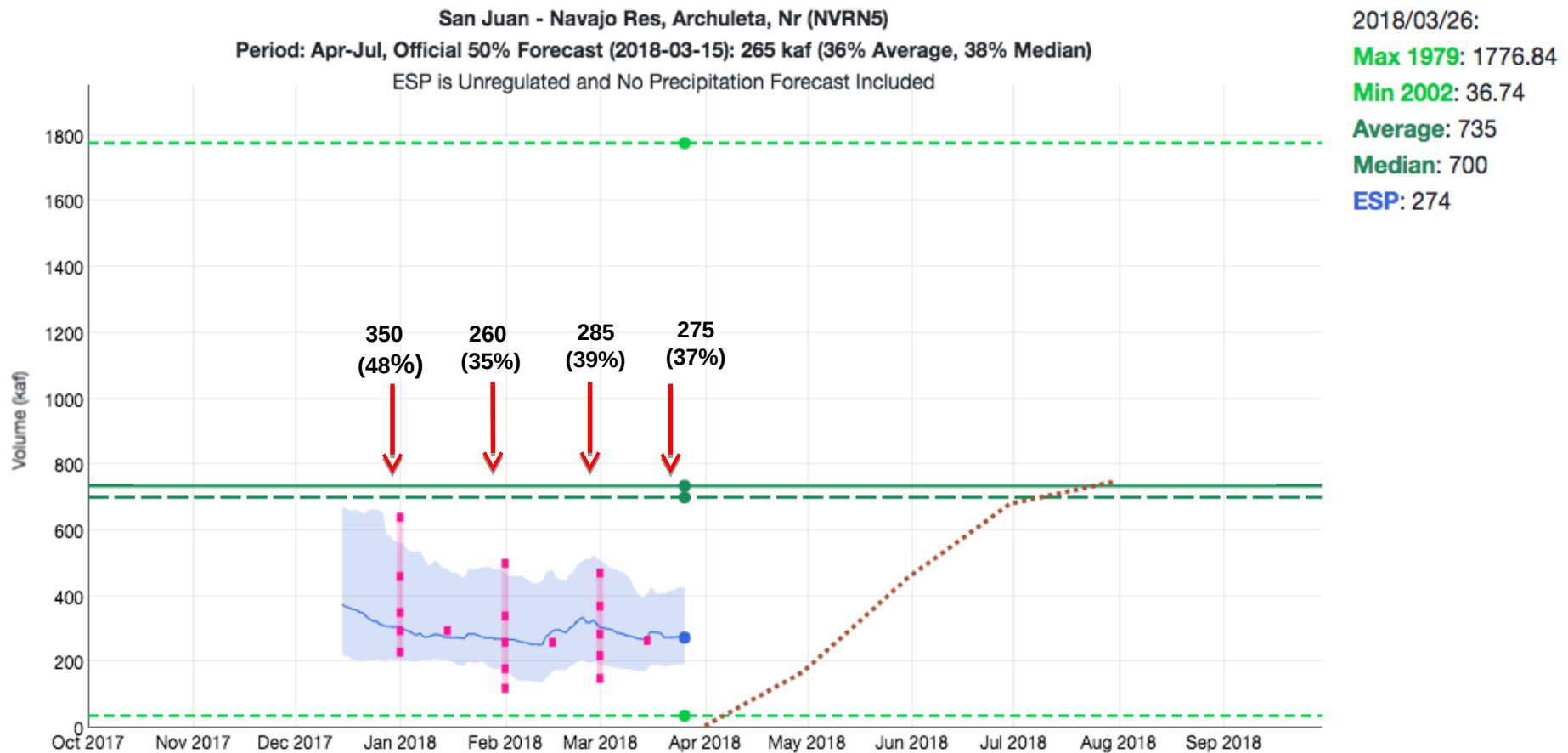
Forecast Evolution Plot – McPhee

Water Supply Forecast



Forecast Evolution Plot – Navajo

Water Supply Forecast

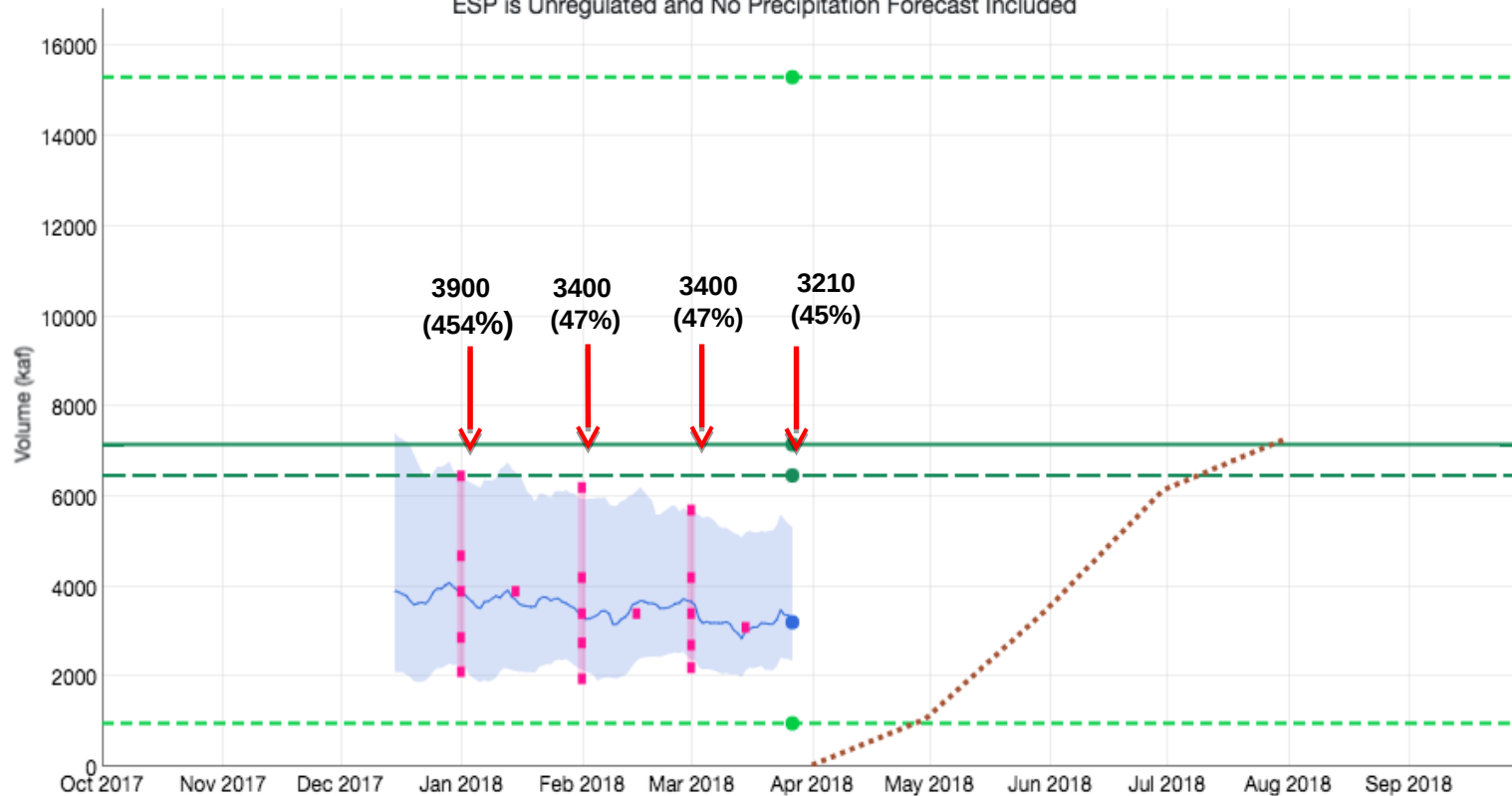


Forecast Evolution Plot – Lake Powell

Water Supply Forecast

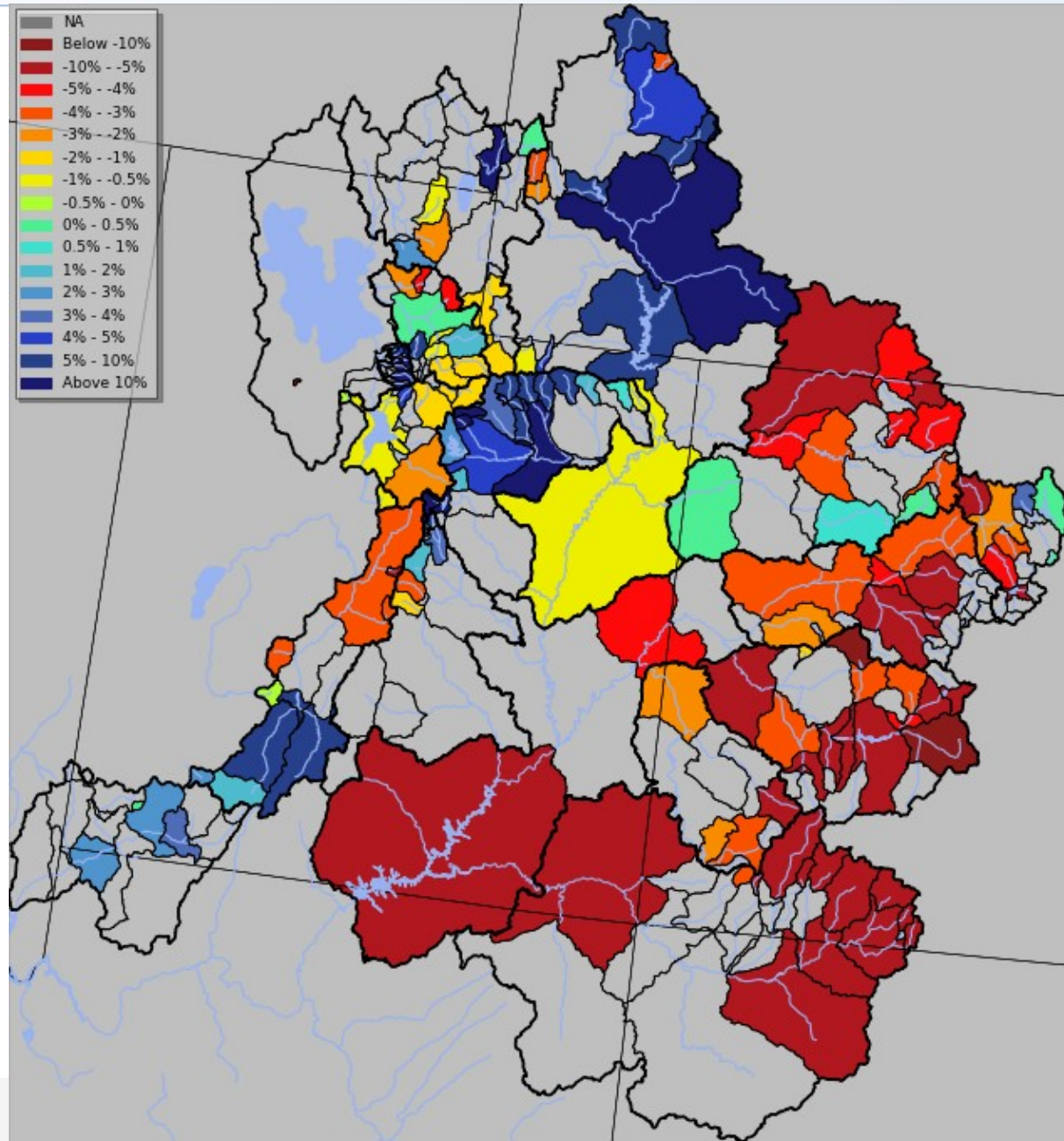
Colorado - Lake Powell, Glen Cyn Dam, At (GLDA3)
Period: Apr-Jul, Official 50% Forecast (2018-03-15): 3100 kaf (43% Average, 48% Median)
ESP is Unregulated and No Precipitation Forecast Included

2018/03/27:
Max 1984: 15316.11
Min 2002: 963.96
Average: 7160
Median: 6470
ESP: 3210



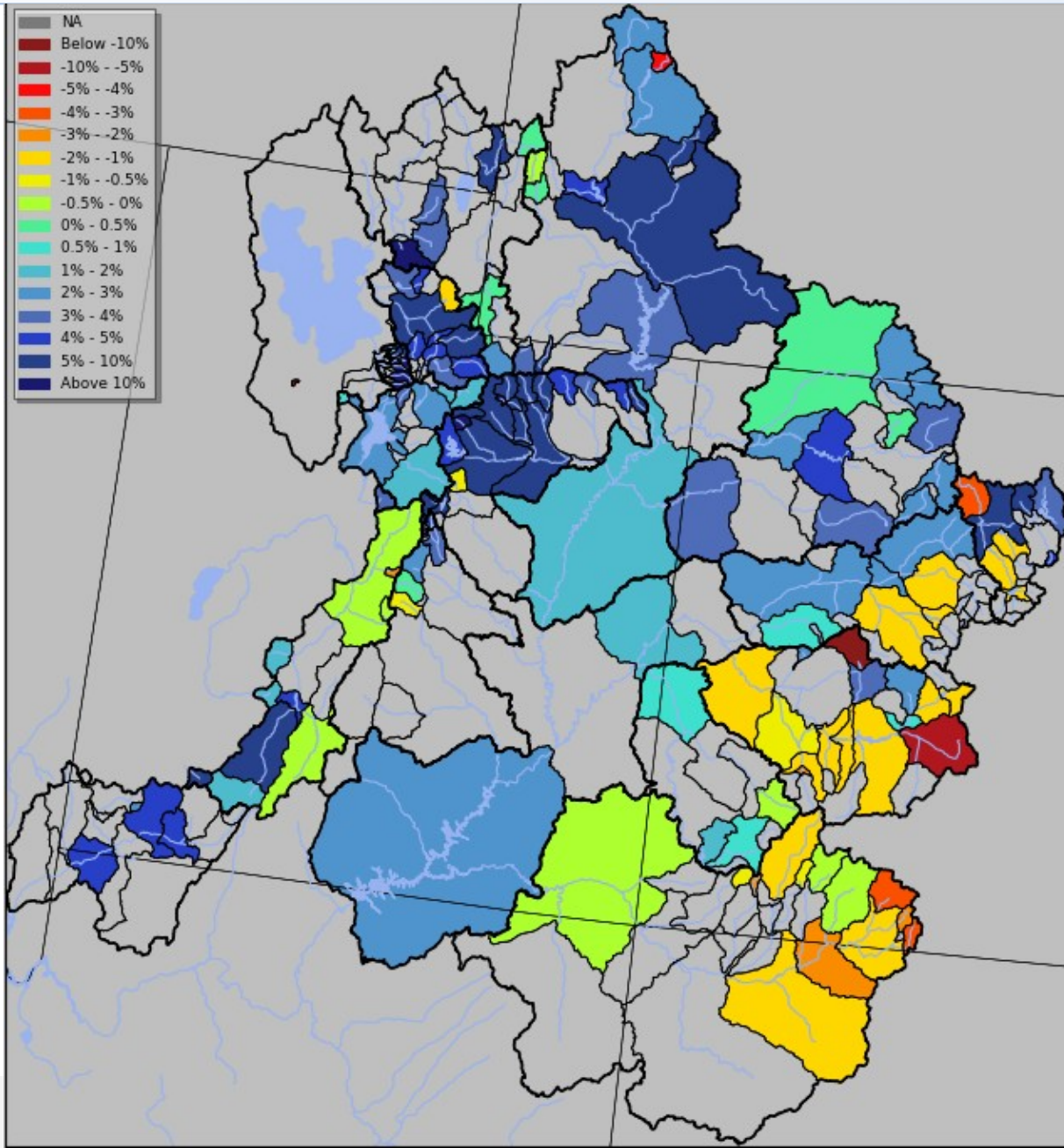
Trend in model guidance between 3/1 and 3/27 2018

Change in
April-July volume
as a % of average

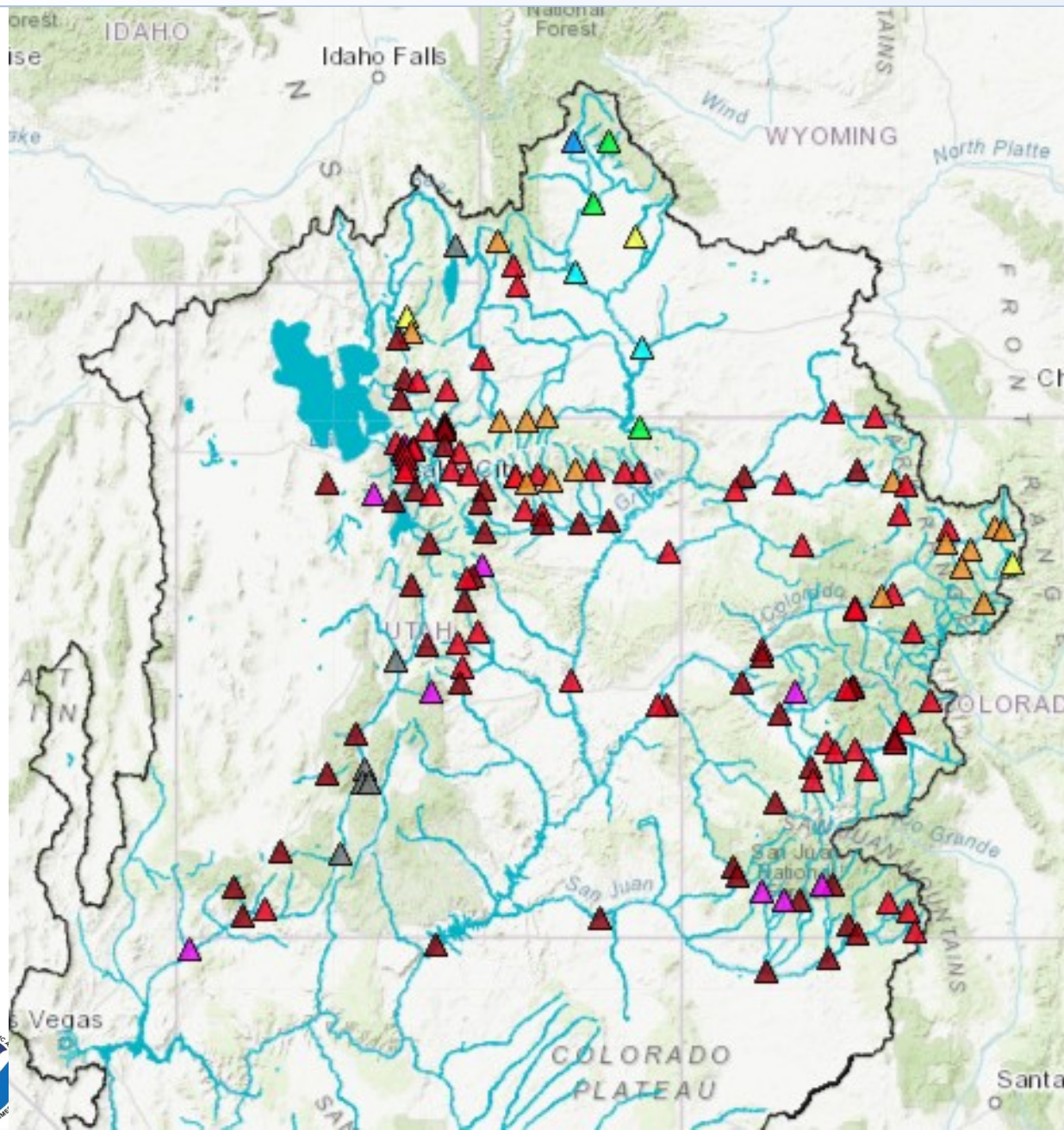


Trend in model guidance between 3/15 and 3/27 2018

Change in
April-July volume
as a % of average



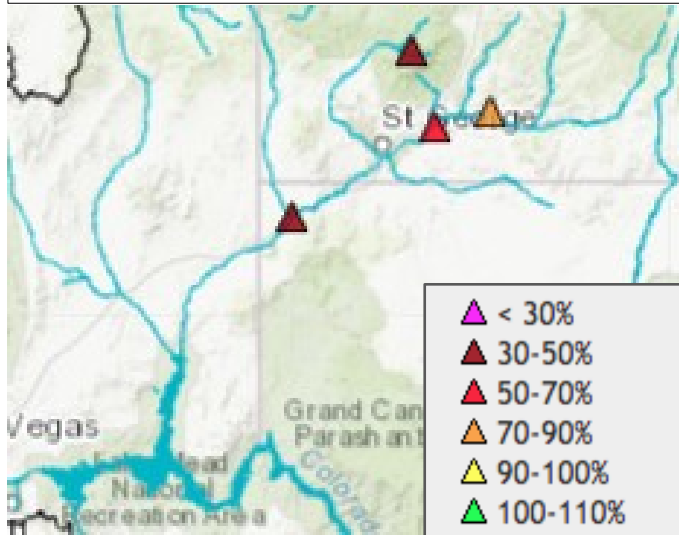
March 26th ESP Volumes (% of average)



- ▲ < 30%
- ▲ 30-50%
- ▲ 50-70%
- ▲ 70-90%
- ▲ 90-100%
- ▲ 100-110%
- ▲ 110-130%
- ▲ 130-150%
- ▲ 150-200%
- ▲ 200-300%
- ▲ 300-500%
- ▲ >500%
- ▲ Regulated
- △ No Forecast

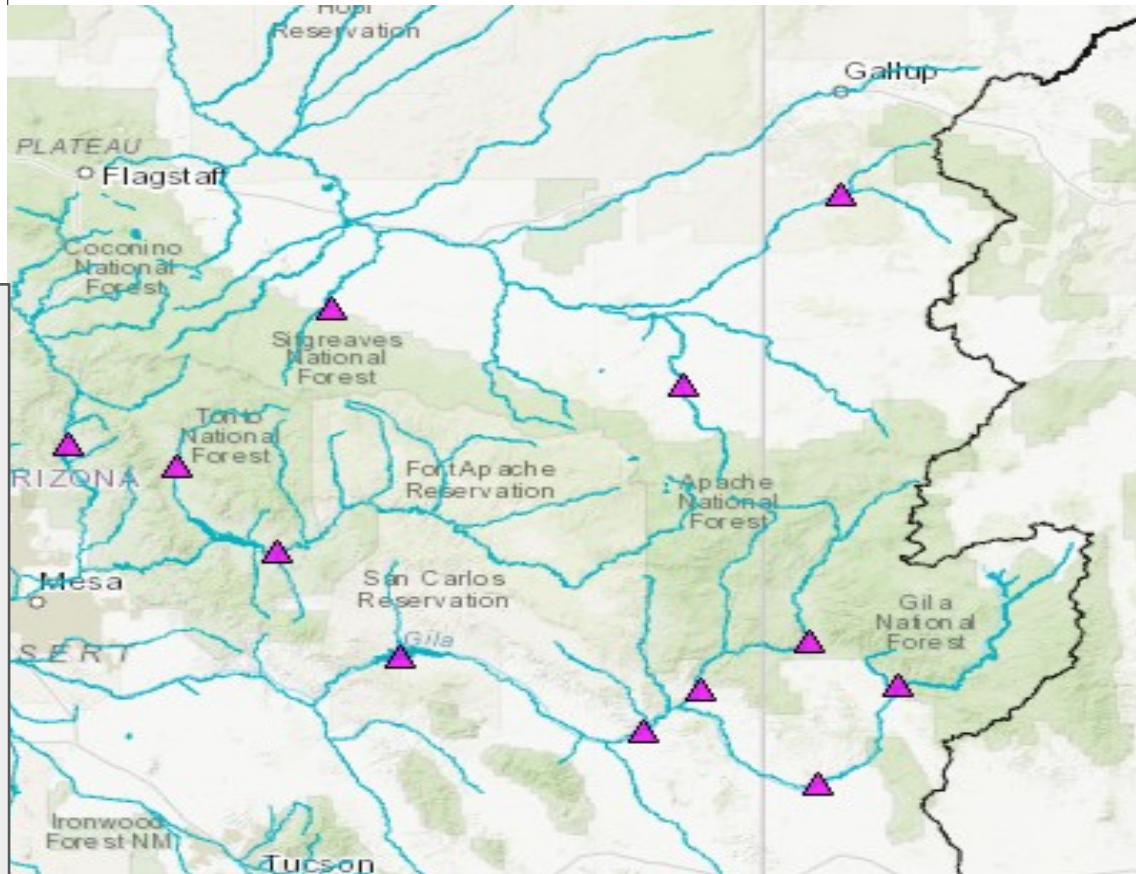
Lower Colorado River Water Supply

**Virgin River Basin
April – July Forecast Volume
(Latest ESP % Median)**



- ▲ < 30%
- ▲ 30-50%
- ▲ 50-70%
- ▲ 70-90%
- ▲ 90-100%
- ▲ 100-110%
- ▲ 110-130%
- ▲ 130-150%
- ▲ 150-200%
- ▲ 200-300%
- ▲ 300-500%
- ▲ >500%
- ▲ Regulated
- △ No Forecast

**Gila/Salt/Verde/Little Colorado River Basins
January – May Forecast Volume
(Latest ESP % Median)**



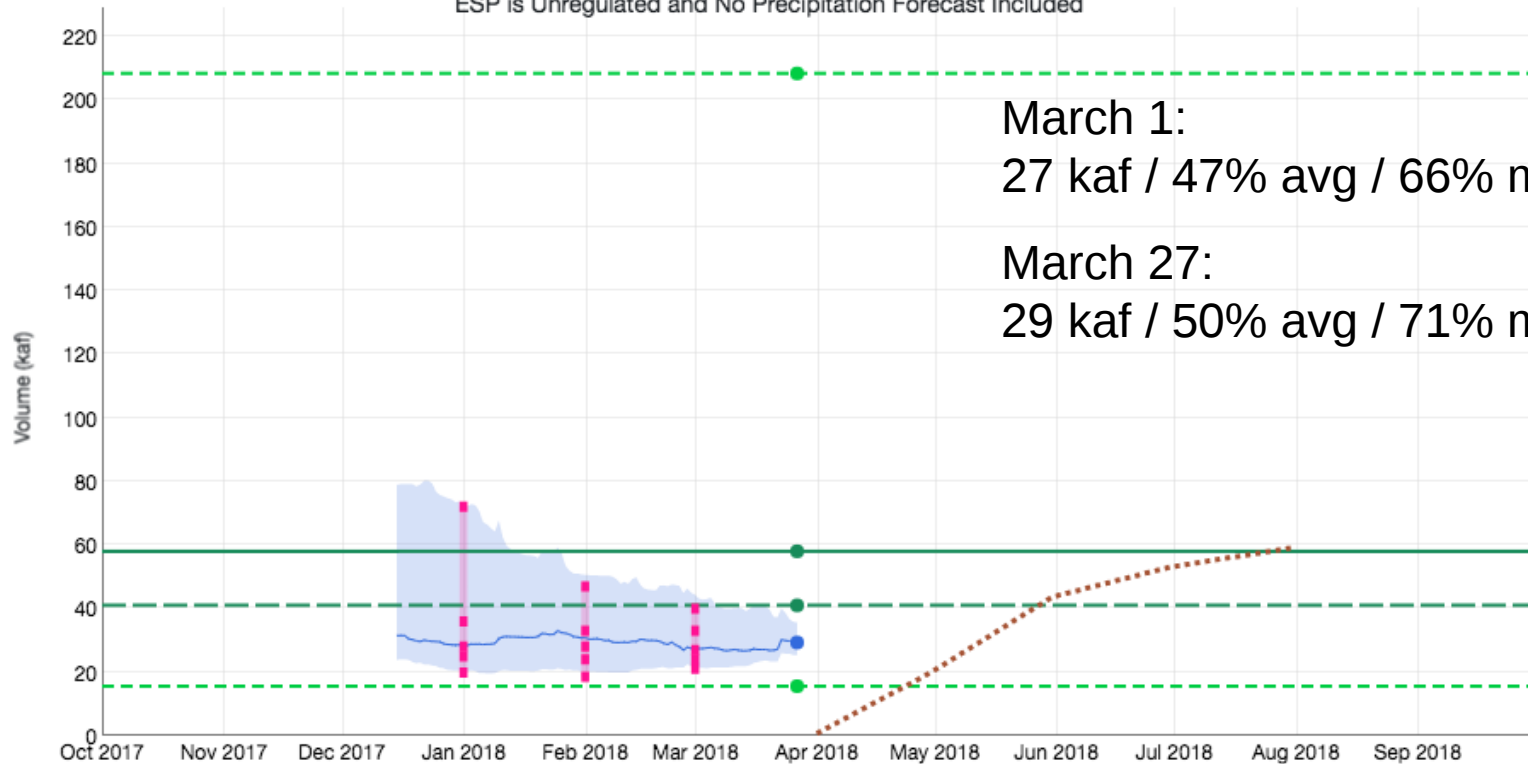
Forecast Evolution Plot – Virgin @ Virgin

Water Supply Forecast

Virgin - Virgin (VIRU1)

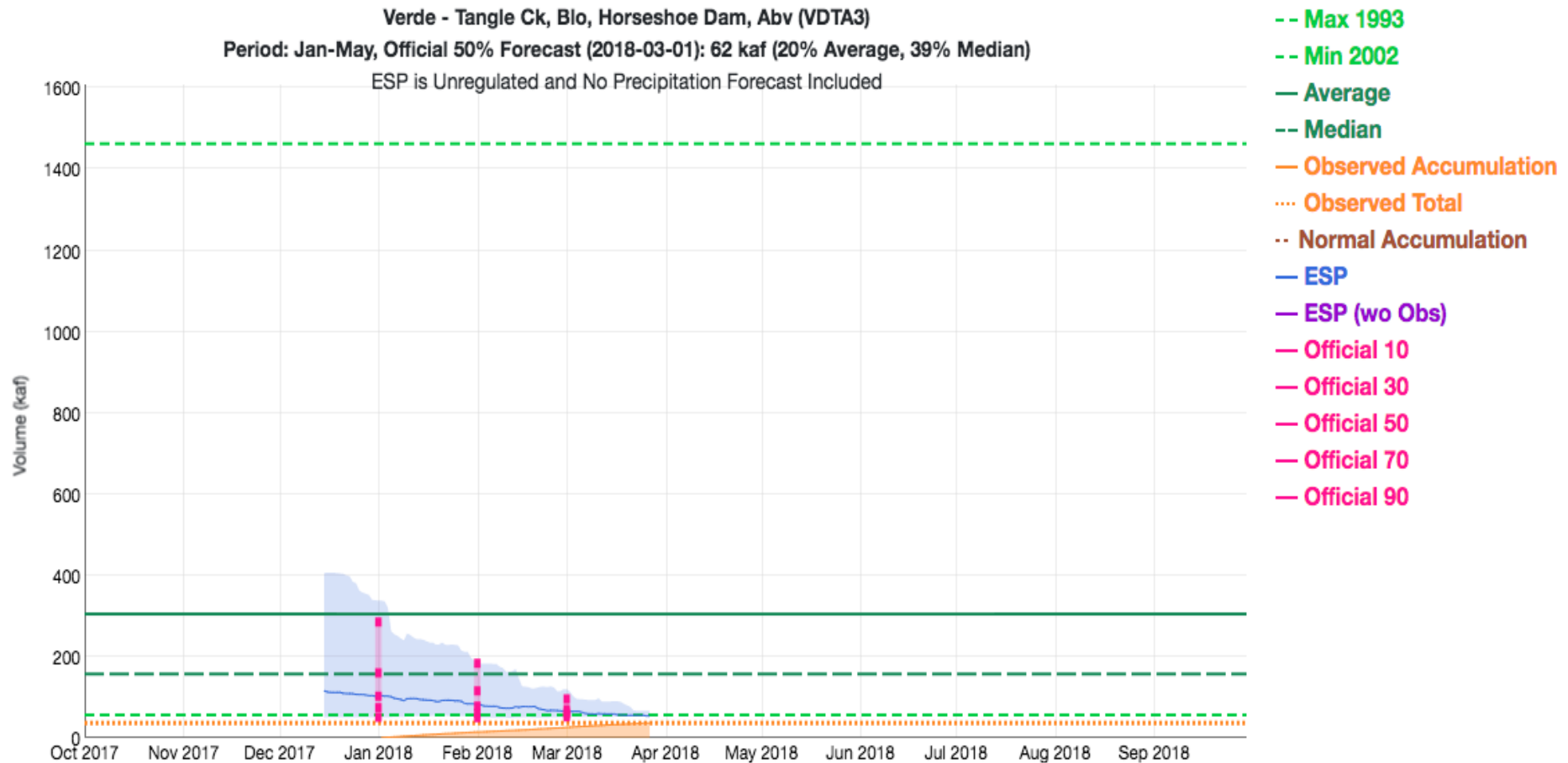
Period: Apr-Jul, Official 50% Forecast (2018-03-01): 27 kaf (47% Average, 66% Median)

ESP is Unregulated and No Precipitation Forecast Included



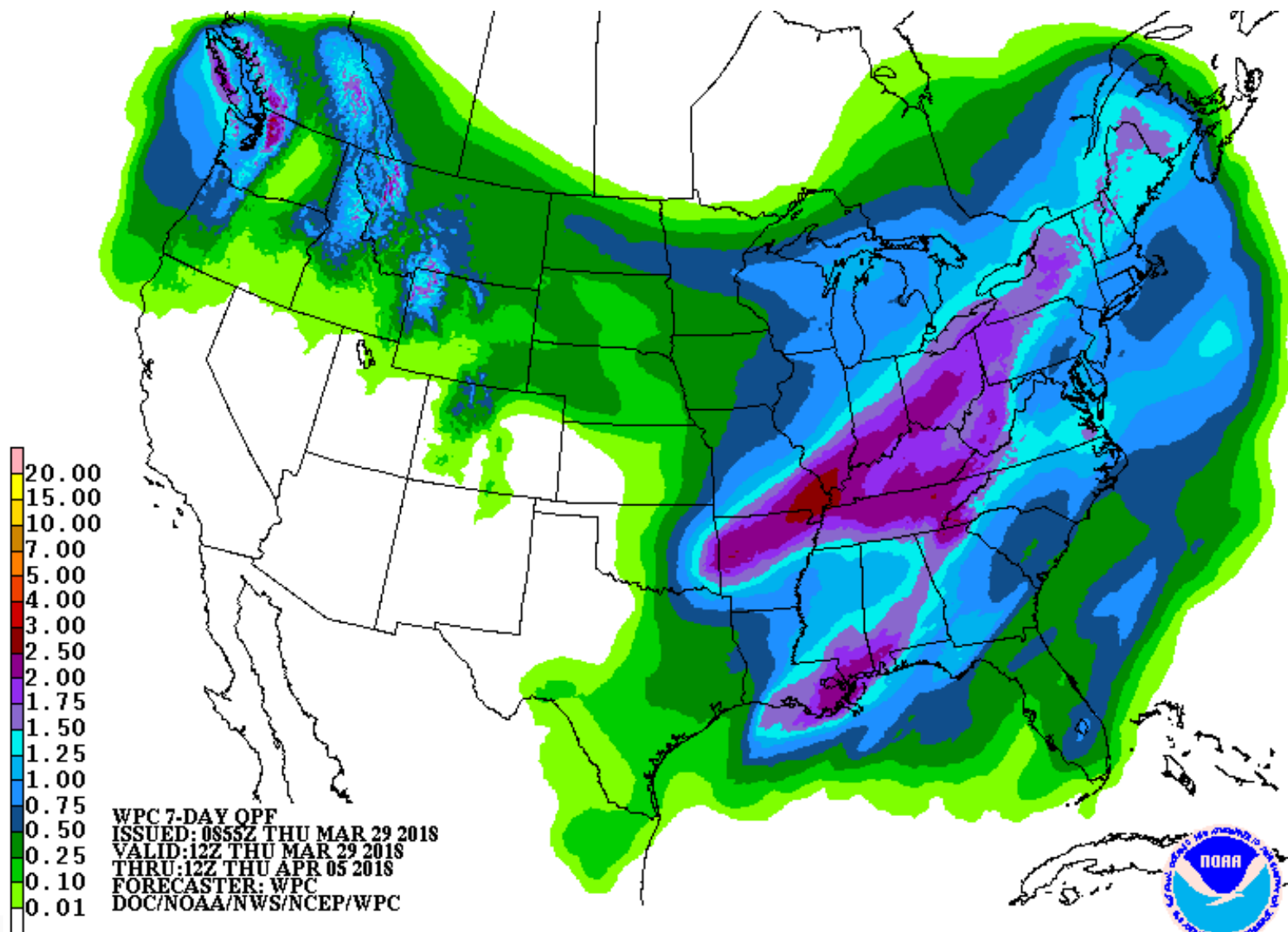
Forecast Evolution Plot: Verde below Tangle Creek, above Horseshoe

Water Supply Forecast



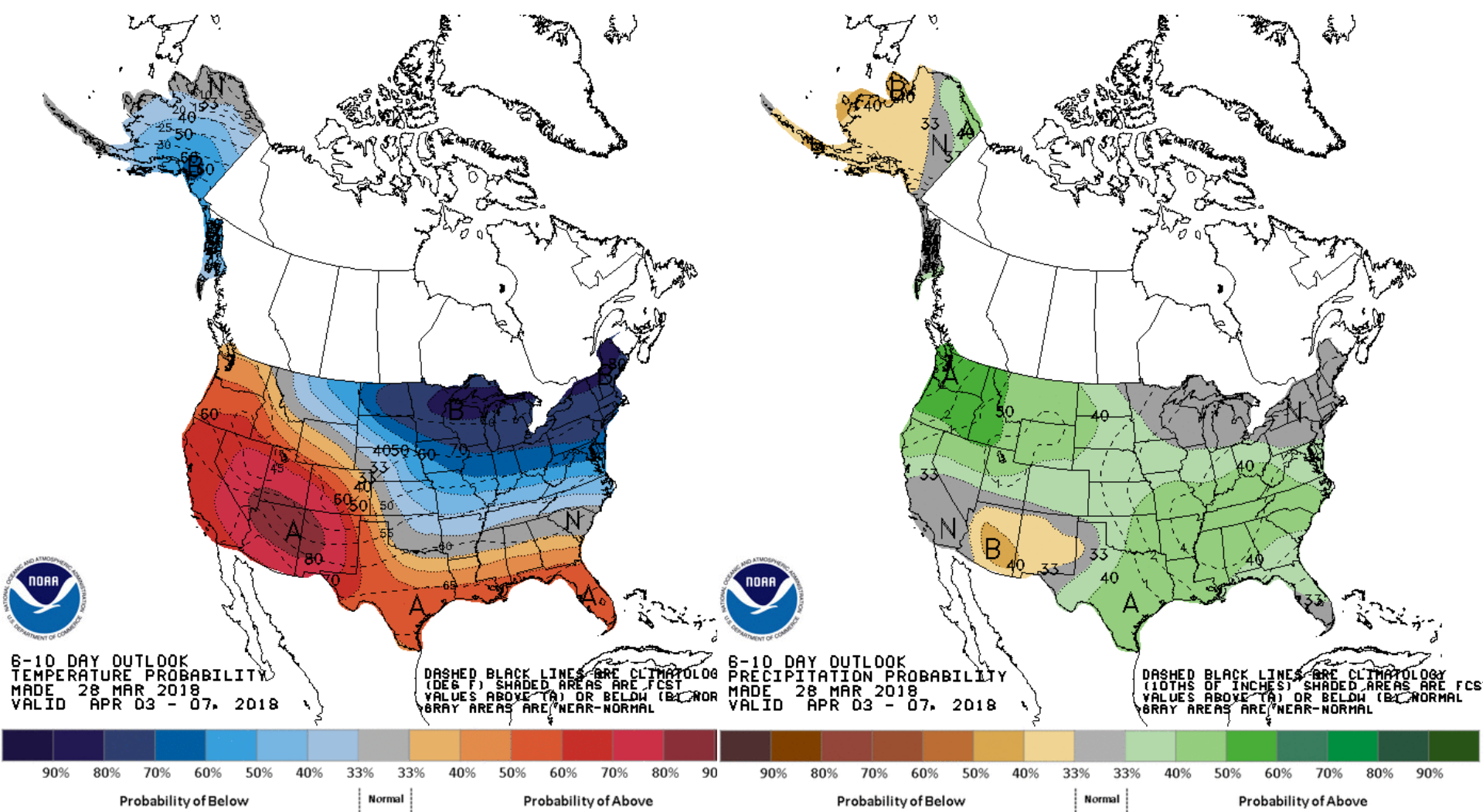
Upcoming Weather – Precipitation the next 7 days

Mar 29 – April 5th Precipitation Forecast



April Weather – Dry start then increasing precipitation chances

April 3 – April 7 Temperature & Precipitation Probabilities



April Weather – Increasing chance of precip 2nd weekend

April 5 – April 11 Temperature & Precipitation Probabilities

