

# CBRFC Operations Update Water Year 2018

CRFS March 29, 2018

*Ashley Nielson*  
*Senior Hydrologist*

# CBRFC Operations Update

- Model calibration efforts
- Western water supply (map)
- Other forecast improvements
- New staff assignments reminder

# Calibration

## Ongoing work:

- Lower Colorado recalibration

## Completed:

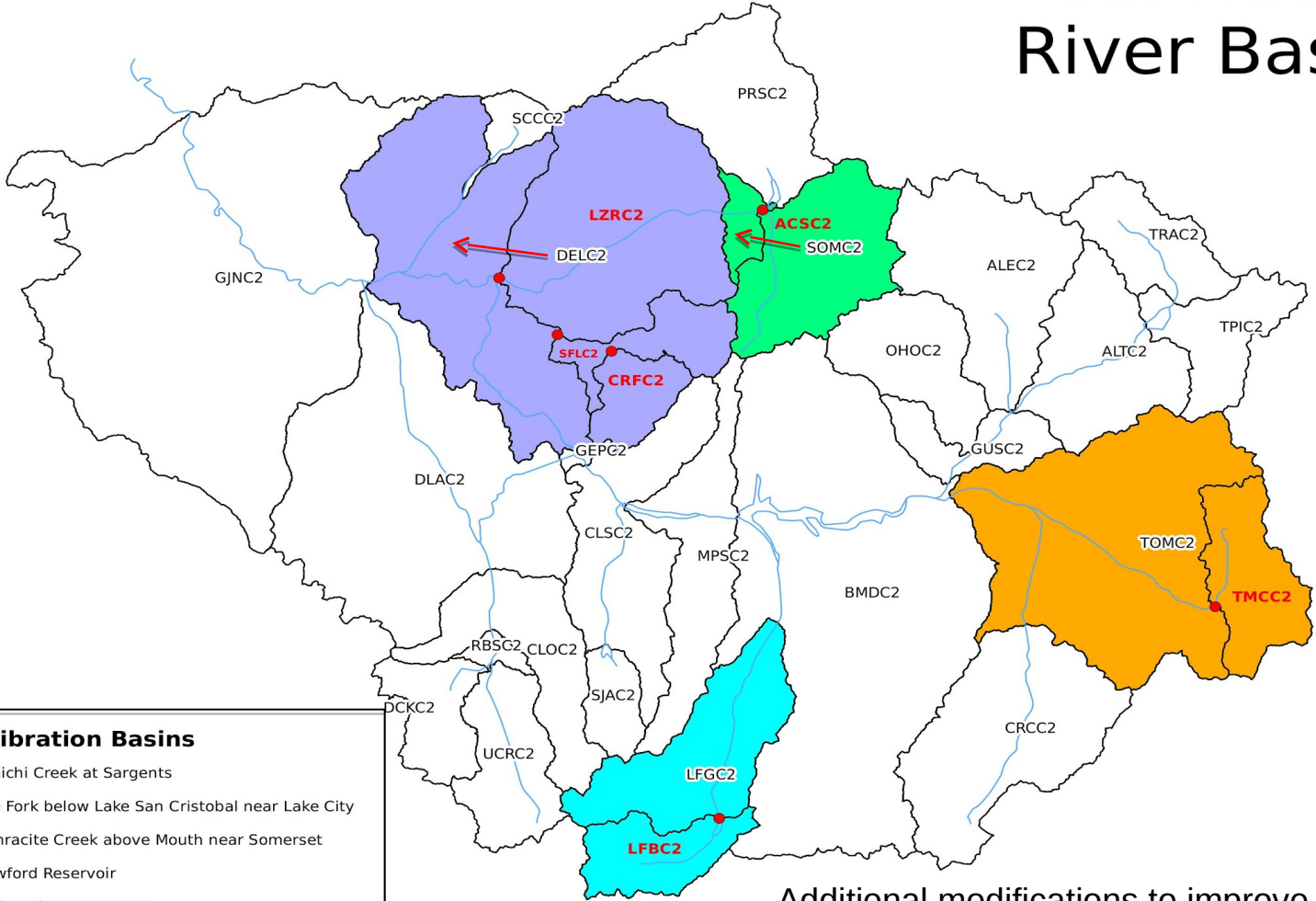
- Gunnison basin recalibration and new segments

# Lower Colorado Calibration

- Working on creating a calibration quality gridded precipitation and temperature data set for use in the lower basins.
  - Uses all available gages to create a grid that is then converted to Mean Areal values
    - Can do this because runoff is primarily precipitation driven vs. snow melt
  - Will be able to easily add years to the calibration/ESP data set
  - The grids that are being created can be used in the next generation of distributed hydrologic models
  - Ensures that calibrations and operations are identical
    - Current operational model is driven by grids converted to mean areal values in the lower basin, but was calibrated on station weighting method

# Gunnison Basin: *New Segments*

## Gunnison River Basin



- New Calibration Basins**
- TMCC2 - Tomichi Creek at Sargents
  - LFBC2 - Lake Fork below Lake San Cristobal near Lake City
  - ACSC2 - Anthracite Creek above Mouth near Somerset
  - CRFC2 - Crawford Reservoir
  - SFLC2 - Smith Fork near Lazear
  - LZRC2 - North Fork Gunnison River above Mouth near Lazear

Additional modifications to improve snow modeling:  
- standardize elevation zone breaks  
- investigate use of newer SNOTEL sites



# Western Water Supply Map



National Oceanic and Atmospheric Administration  
U.S. Department of Commerce

## Western Water Supply Forecasts

Search Sites

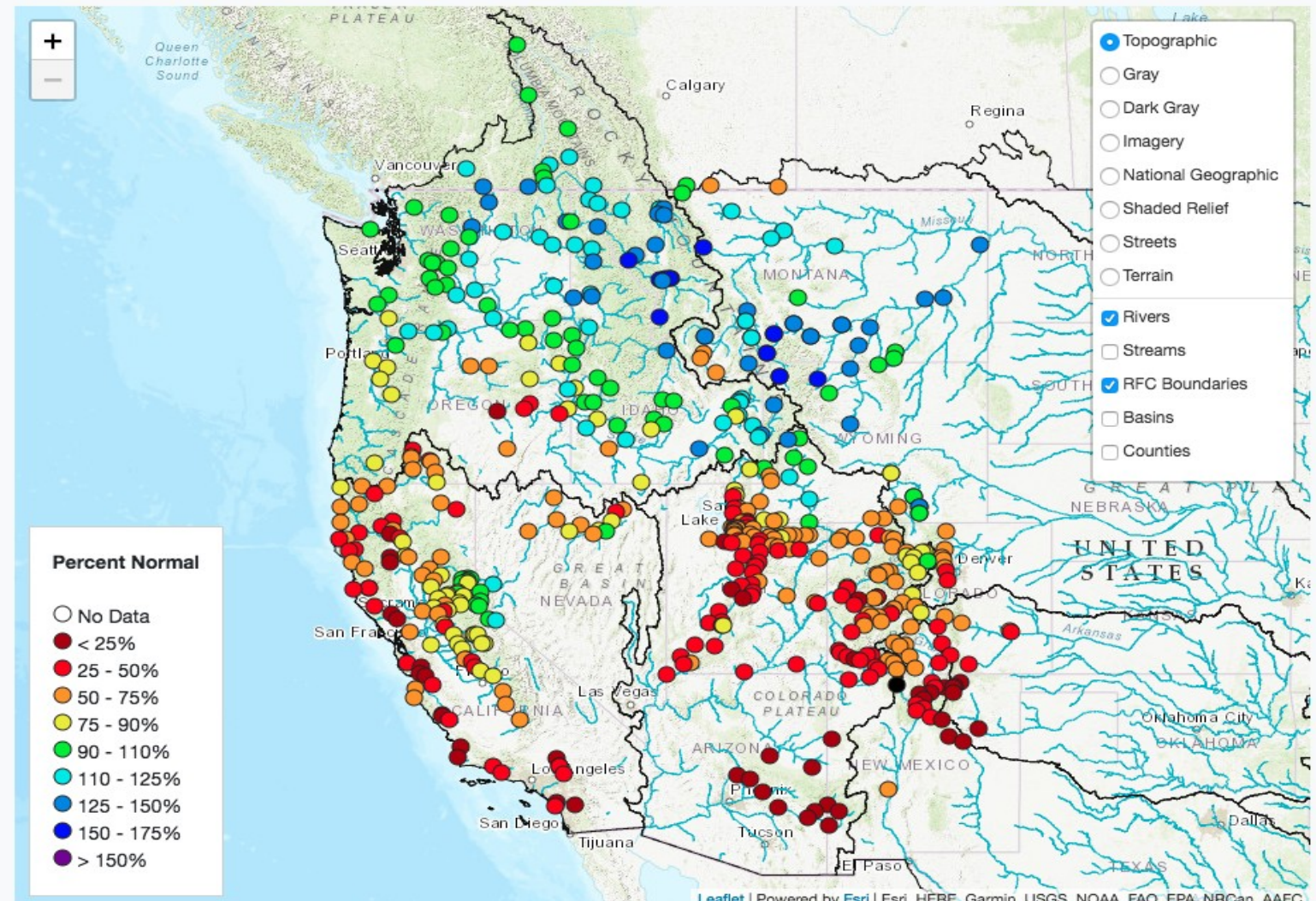
Select Site

+  
-

**Percent Normal**

- No Data
- < 25%
- 25 - 50%
- 50 - 75%
- 75 - 90%
- 90 - 110%
- 110 - 125%
- 125 - 150%
- 150 - 175%
- > 150%

- Topographic
- Gray
- Dark Gray
- Imagery
- National Geographic
- Shaded Relief
- Streets
- Terrain
- Rivers
- Streams
- RFC Boundaries
- Basins
- Counties



# Forecast Improvements

- 15 day deterministic forecast forecast ability (Yampa, North Fork Gunnison)
- Intervening Flow Forecasts (Lake Powell to Lake Mead)



# New Staff and Basin Assignments

Patrick Kormos - Bear and Weber

Cody Moser - Colorado Headwaters

Zach Finch - Lower Colorado Basin

Ashley Nielson - Green River Basin and Lake Powell

Greg Smith - San Juan, Gunnison and Dolores

Tracy Cox - Lower Colorado Basin

Brent Bernard - Six Creeks, Provo, Sevier

Brenda Alcorn - Support and Backup