

**NOAA**

National  
Weather  
Service

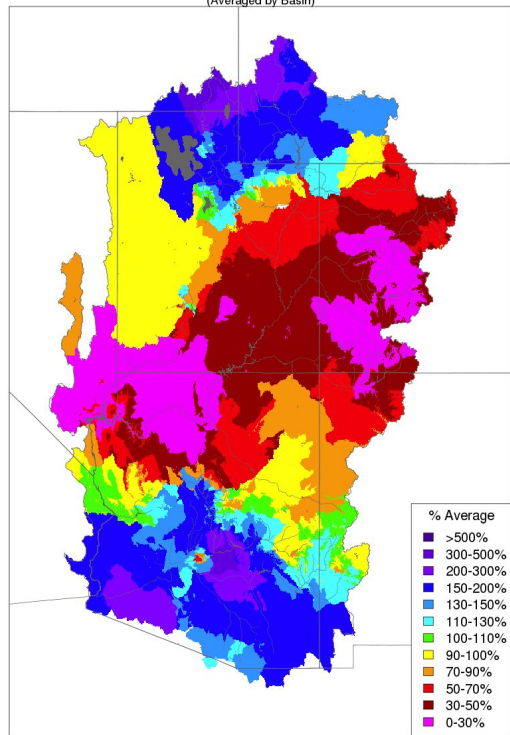
# Current Conditions and Water Year 2020 Outlook

CRFS November 21, 2019

# Observed Fall Precipitation

Monthly Precipitation - September 2019

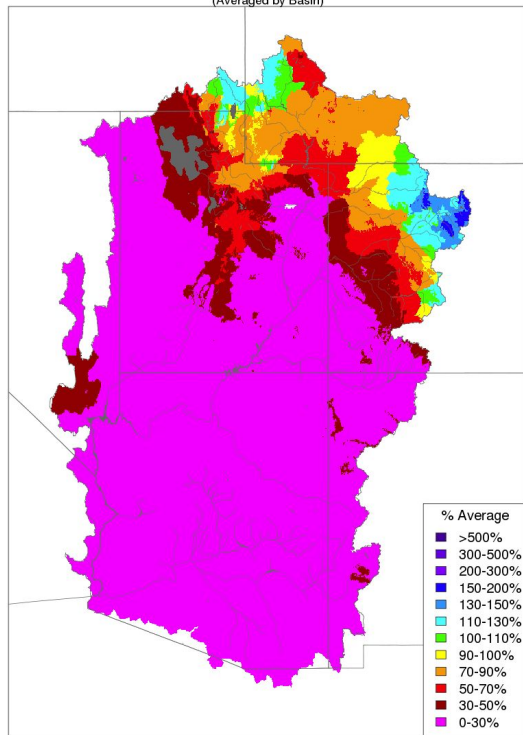
(Averaged by Basin)



Prepared by NOAA, Colorado Basin River Forecast Center  
Salt Lake City, Utah, [www.cbrfc.noaa.gov](http://www.cbrfc.noaa.gov)

Monthly Precipitation - October 2019

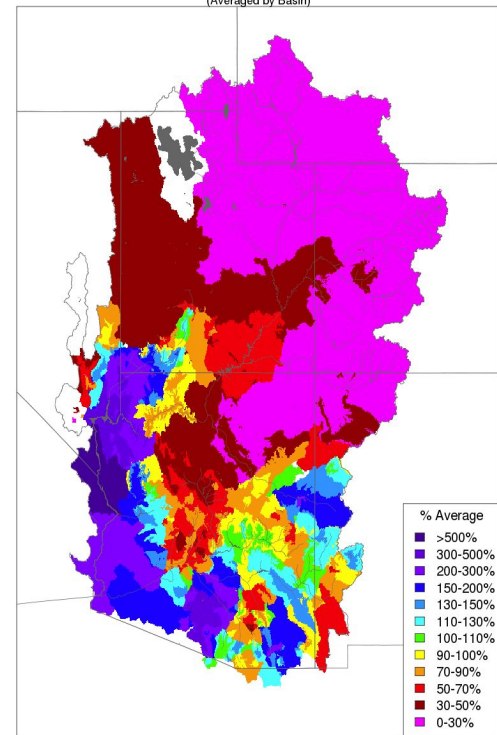
(Averaged by Basin)



Prepared by NOAA, Colorado Basin River Forecast Center  
Salt Lake City, Utah, [www.cbrfc.noaa.gov](http://www.cbrfc.noaa.gov)

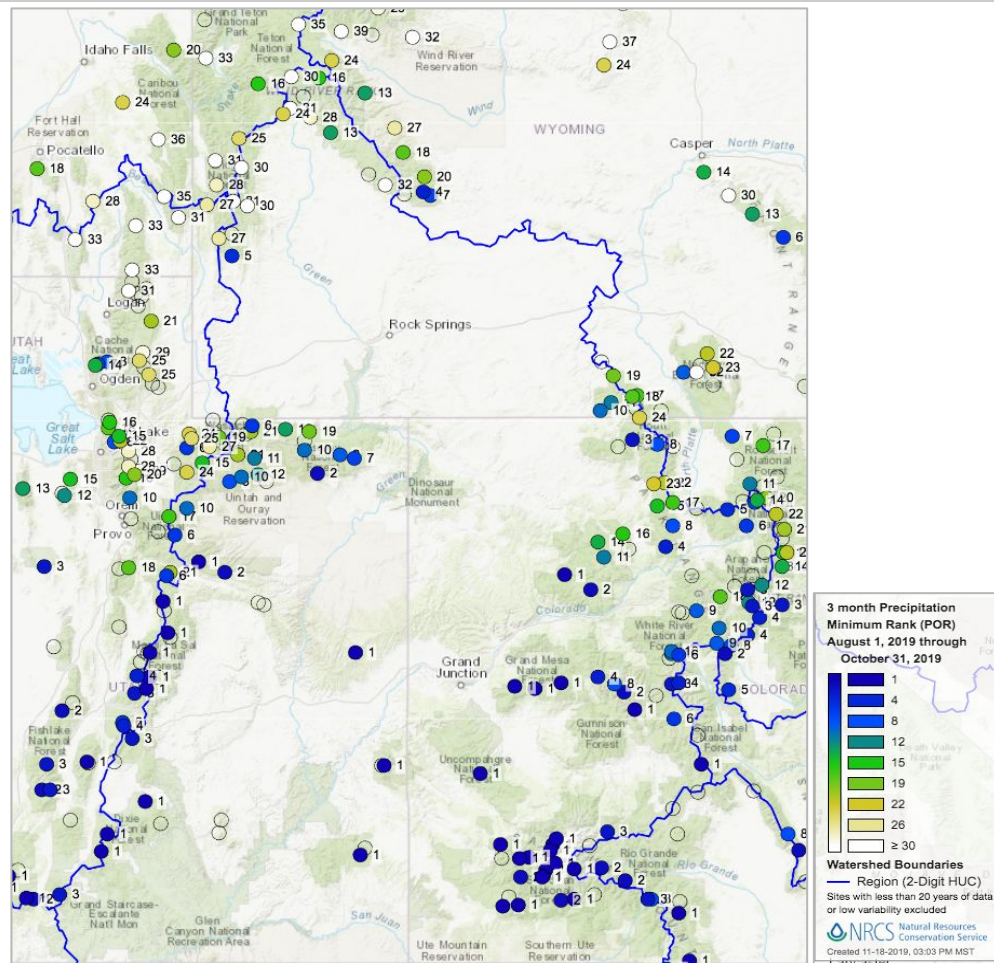
Month to Date Precipitation - November 20 2019

(Averaged by Basin)

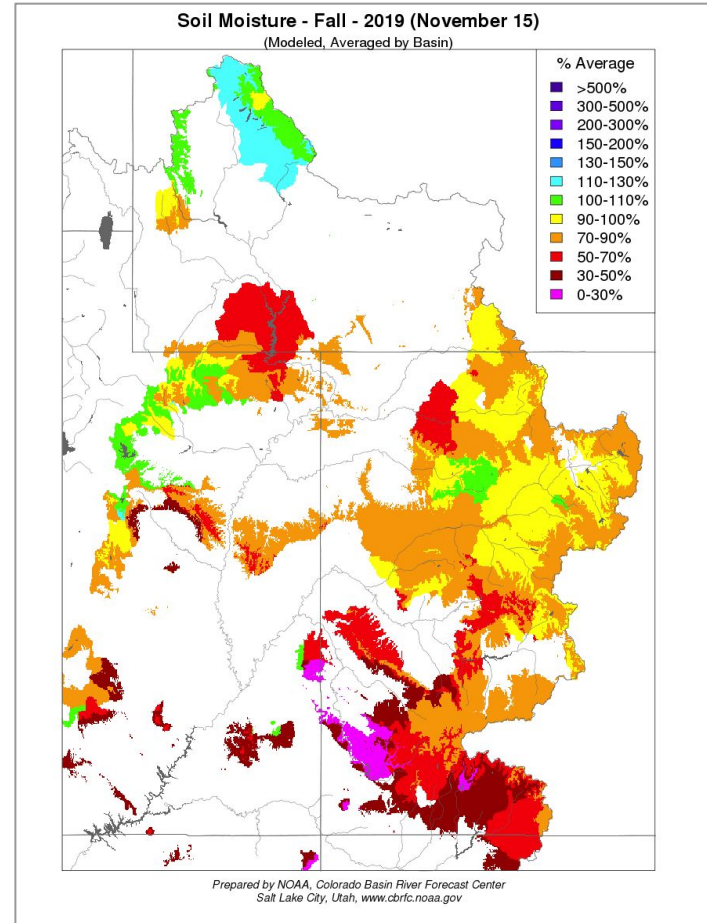
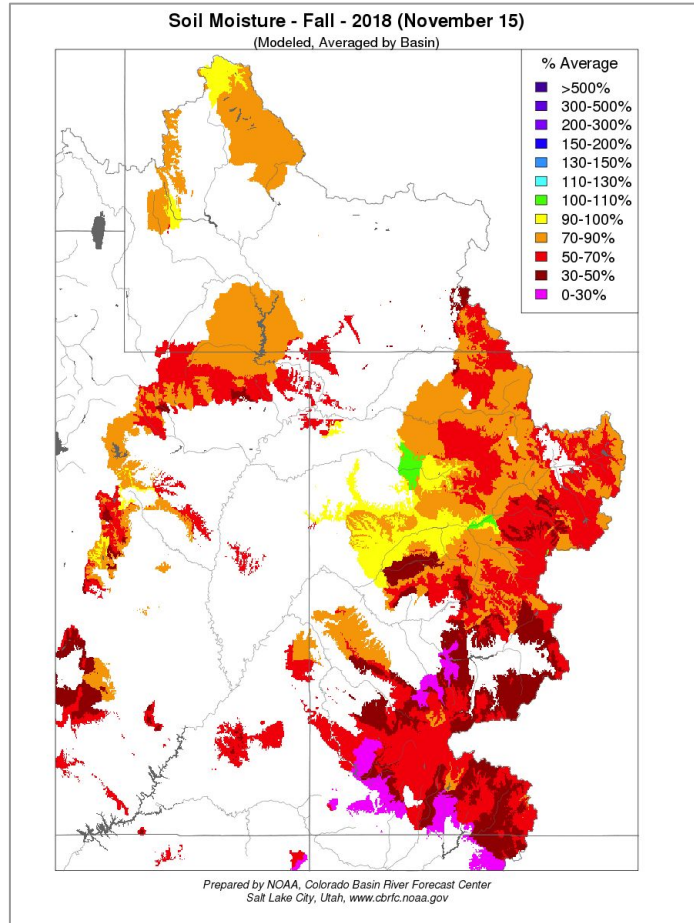


Prepared by NOAA, Colorado Basin River Forecast Center  
Salt Lake City, Utah, [www.cbrfc.noaa.gov](http://www.cbrfc.noaa.gov)

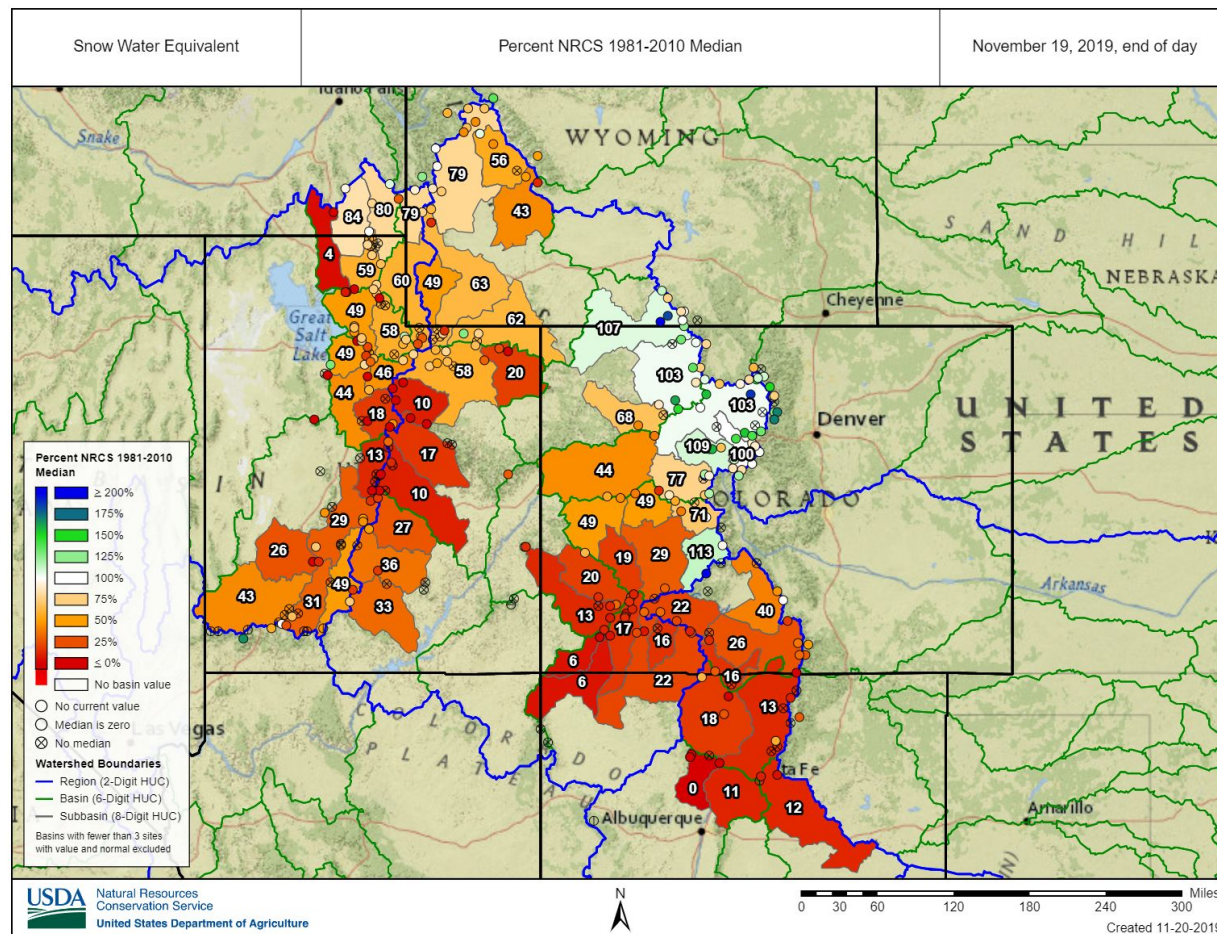
# Minimum Precipitation Ranking: August-October 2019



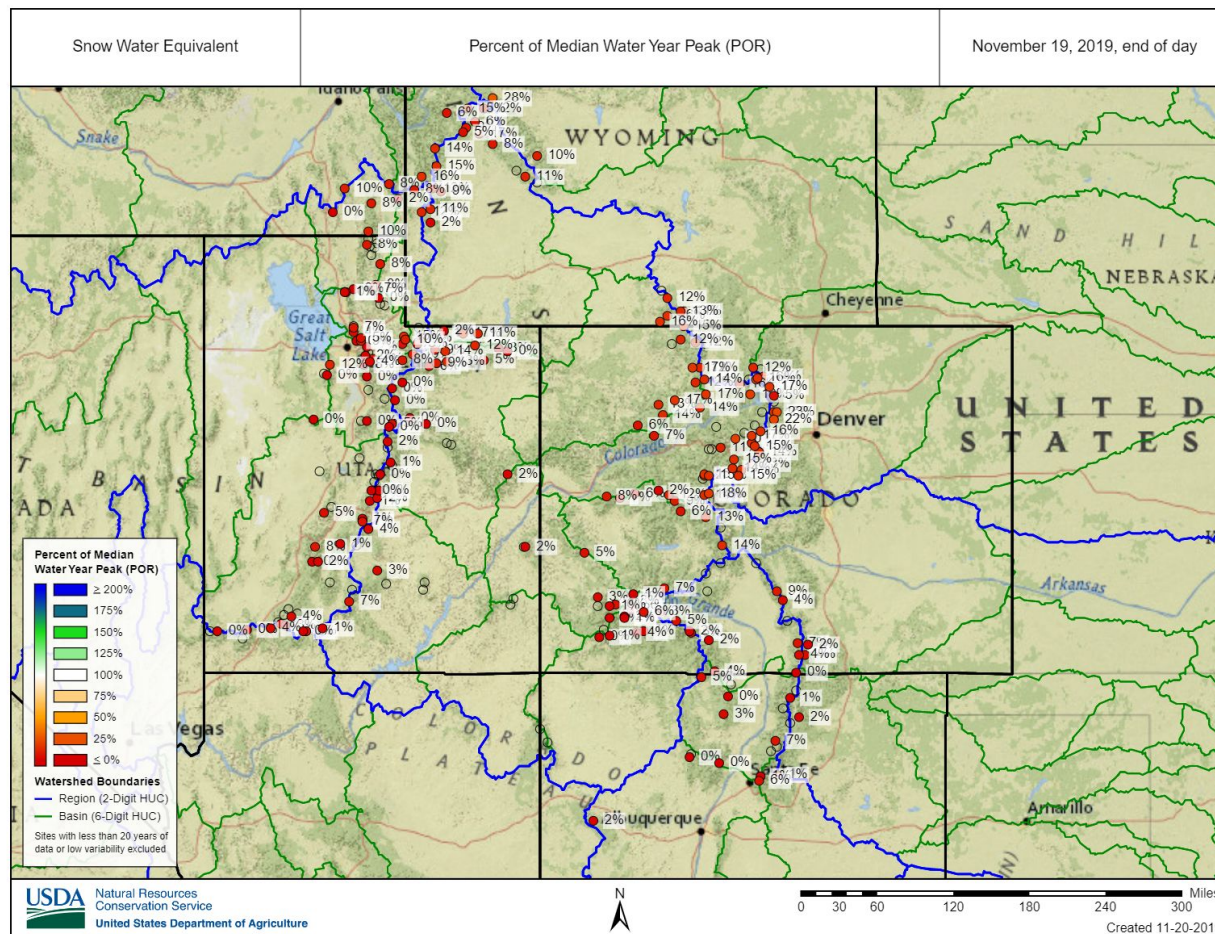
# Fall Modeled Soil Moisture



# Snowpack Conditions-% of Daily Median



# Snowpack Conditions, % of Median WY Peak

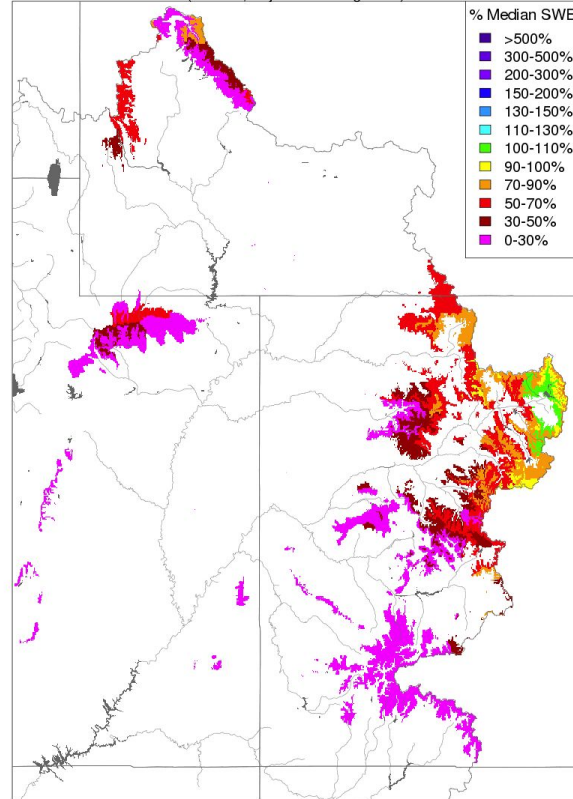


# CBRFC Model Snow

## % Median- November 20

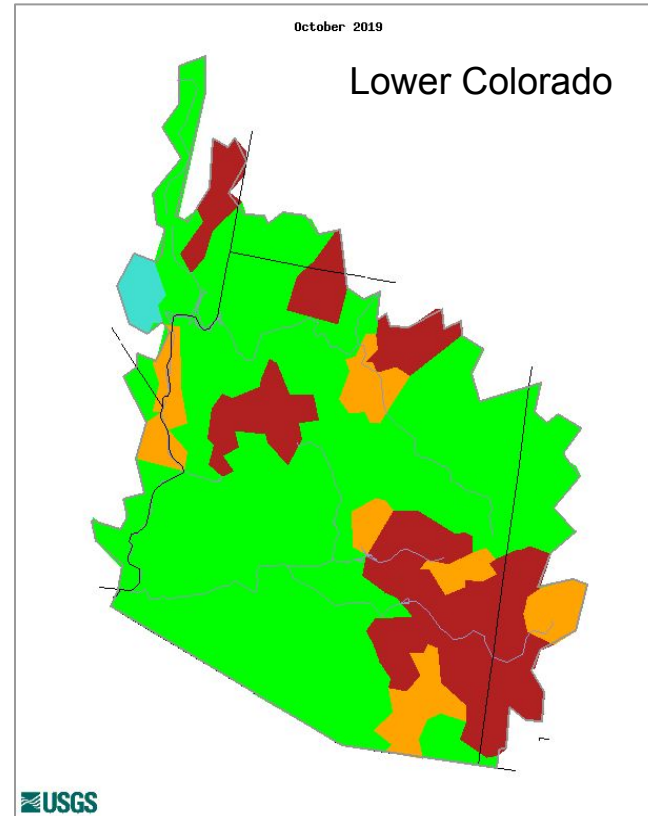
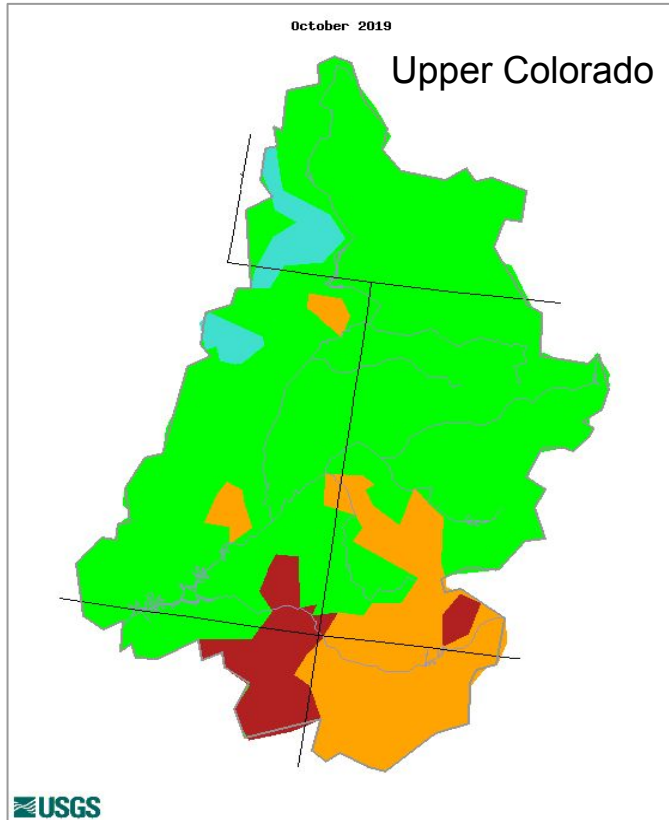
Snow Conditions - November 20 2019

(Modeled, Major Contributing Areas)



Prepared by NOAA, Colorado Basin River Forecast Center  
Salt Lake City, Utah, [www.cbrfc.noaa.gov](http://www.cbrfc.noaa.gov)

# October 2019 Streamflow



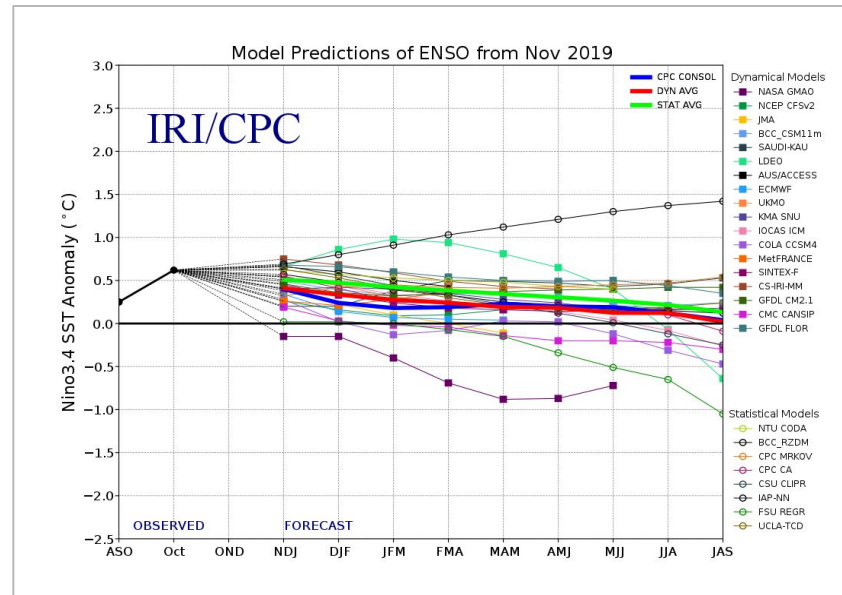
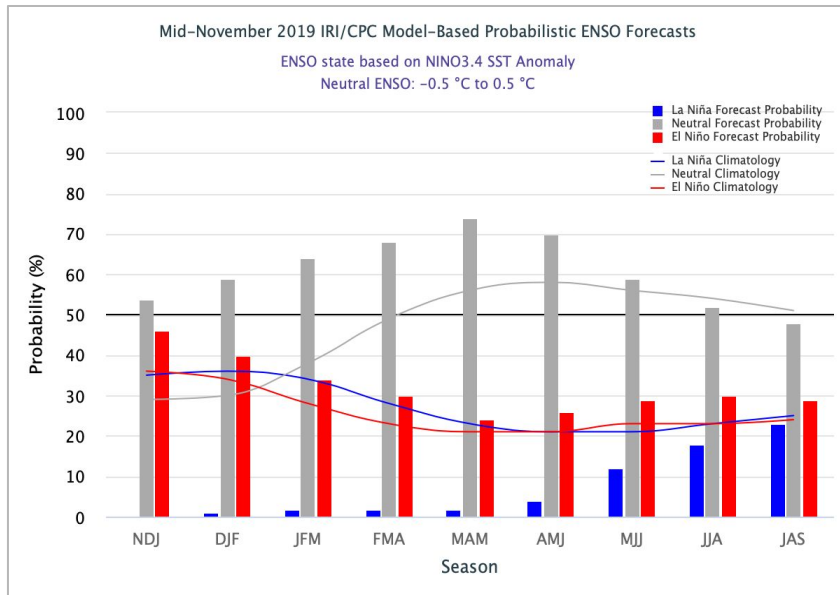
| Explanation - Percentile classes |                   |              |        |              |                   |      |         |
|----------------------------------|-------------------|--------------|--------|--------------|-------------------|------|---------|
|                                  |                   |              |        |              |                   |      |         |
| Low                              | <10               | 10-24        | 25-75  | 76-90        | >90               | High | No Data |
|                                  | Much below normal | Below normal | Normal | Above normal | Much above normal |      |         |

# ESP Outlooks: 2020 April-July Volumes

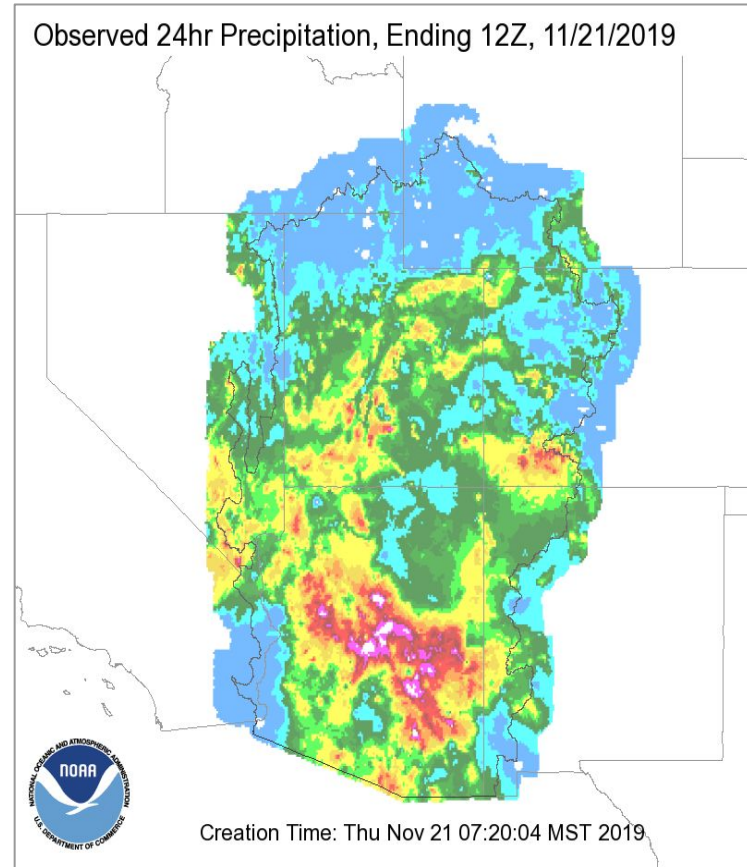
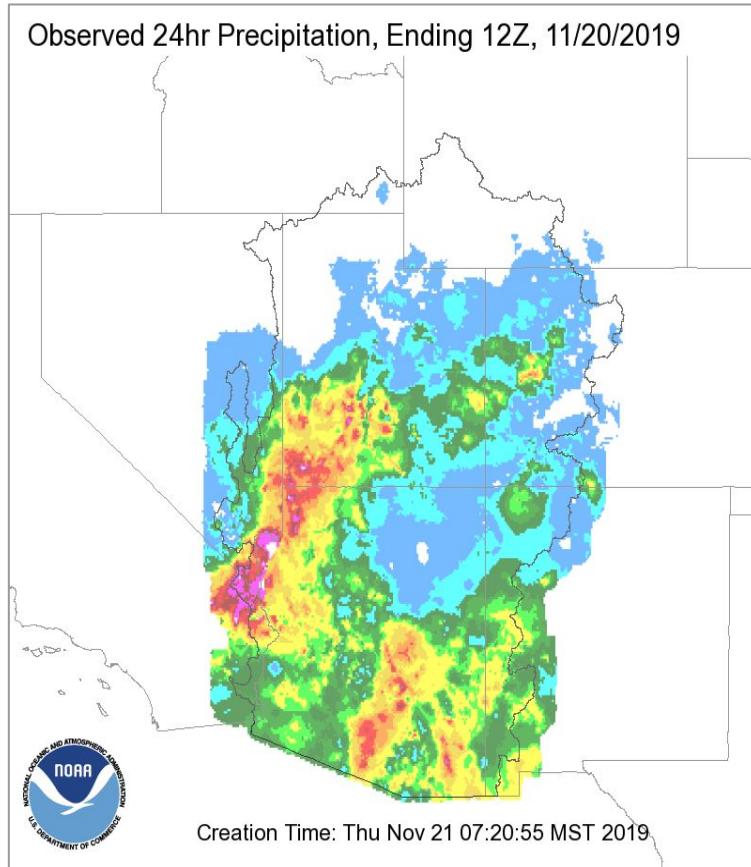
| Location      | Aug 1 Raw ESP | Oct 1 Raw ESP | Mid-Nov Raw ESP | % Change Raw ESP<br>(Aug-Oct / Oct-Mid Nov) |
|---------------|---------------|---------------|-----------------|---|
| Fontenelle    | 675 / 93%     | 710 / 98%     | 600 / 83%       | +5% / -15%                                  |
| Flaming Gorge | 895 / 91%     | 915 / 93%     | 715 / 73%       | +2% / -22%                                  |
| Blue Mesa     | 685 / 101%    | 585 / 87%     | 450 / 67%       | -15% / -23%                                 |
| Navajo        | 655 / 89%     | 585 / 80%     | 375 / 51%       | -11% / -36%                                 |
| Lake Powell   | 6500 / 91%    | 5650 / 79%    | 4660 / 65%      | -13% / -18%                                 |

# ENSO Status

- El Niño southern oscillation (ENSO) maintained neutral conditions during October and early November.
- Most model forecasts favor ENSO-neutral conditions through winter and spring with slightly higher chances for El Niño than La Niña.

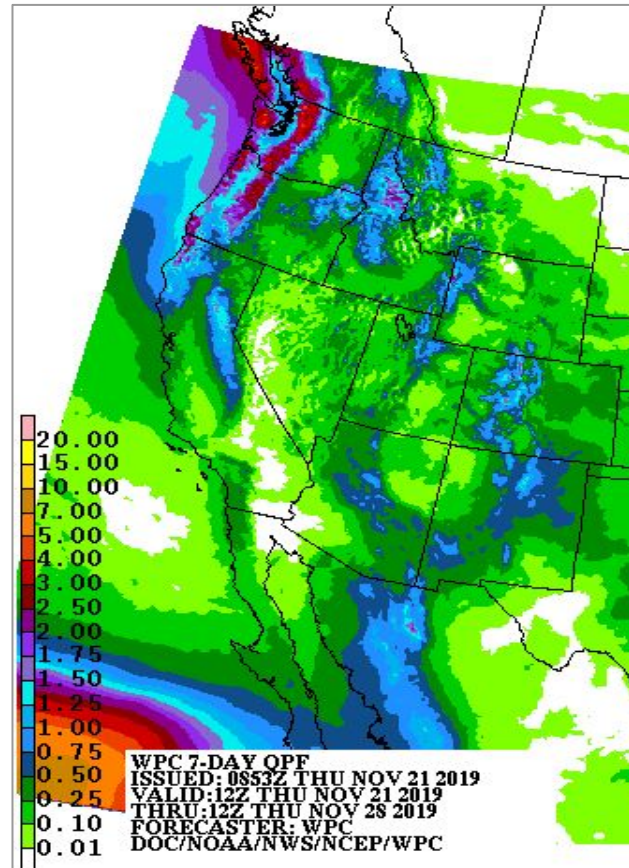


# Observed Precipitation: Past 48 hours



# Future Weather: Short Term

Forecast Precipitation: Nov 21th - Nov 28th



# Future Weather: Long Term

Possible large-scale pattern shift developing which could result in more active weather and better chances for precipitation into early December.

