



— BUREAU OF —
RECLAMATION

CRFS Glen Canyon

**Basin Hydrology and Reservoir
Operations for Water Year 2020**

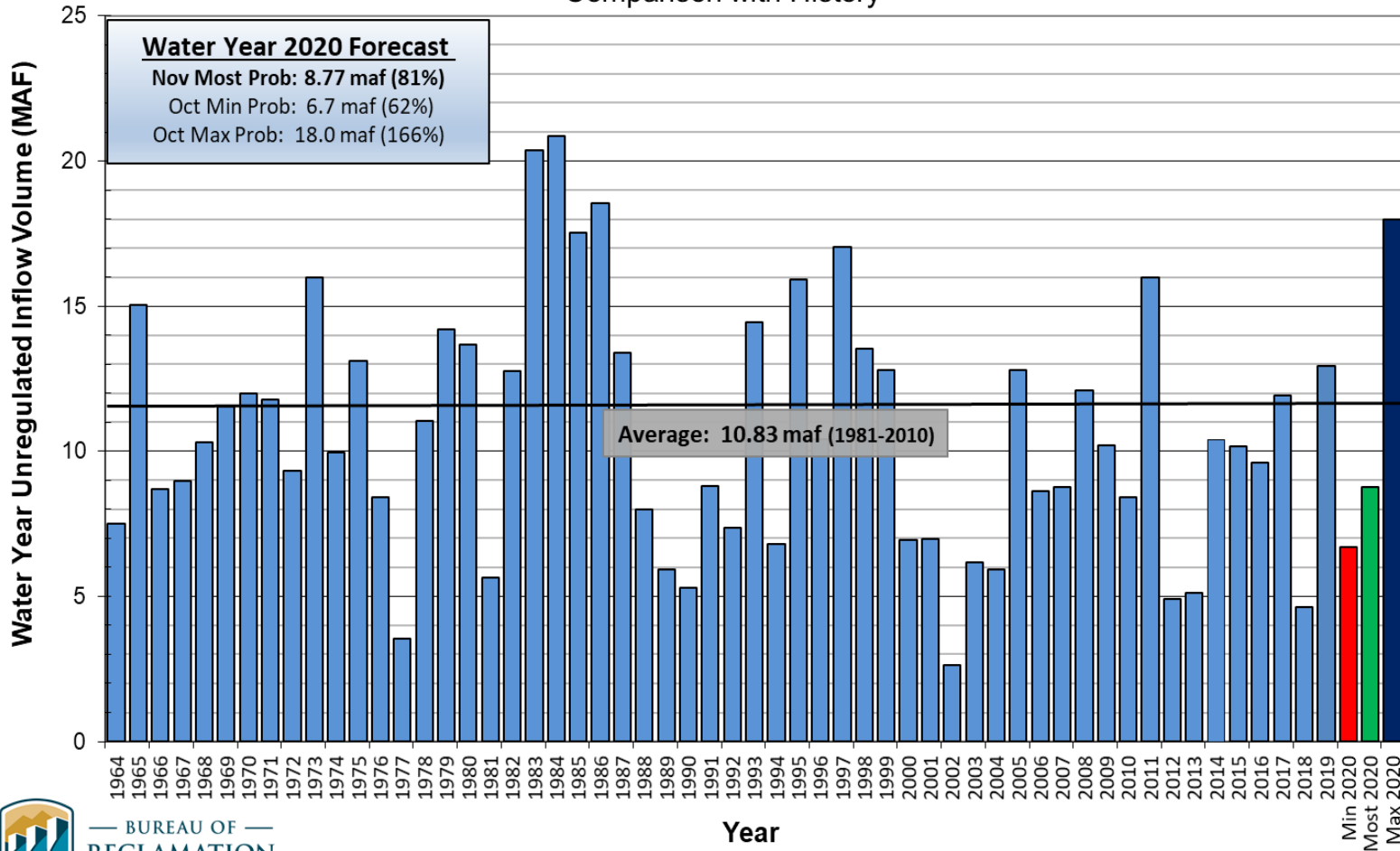
November 21, 2019

Heather E. Patno

Hydraulic Engineer

Lake Powell Inflow

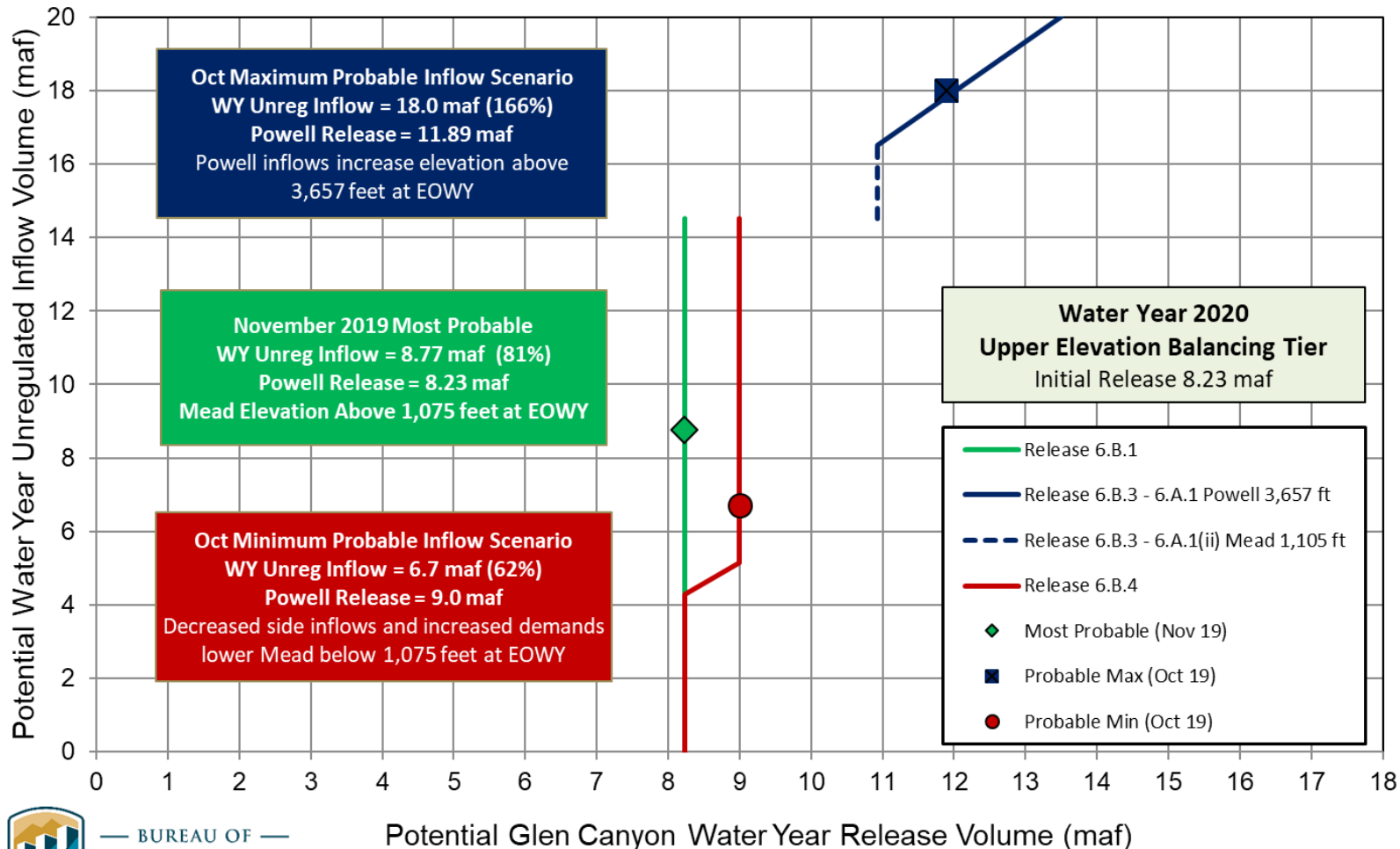
Lake Powell Unregulated Inflow
Water Year 2020 Forecast *(issued November 1)*
Comparison with History



Release Scenarios under Interim Guidelines

Lake Powell Release Scenarios under Section 6.B

Water Year 2020 Release Volume as a Function of Upper Elevation Balancing Tier based on October and November 2019 24-Month Study Conditions

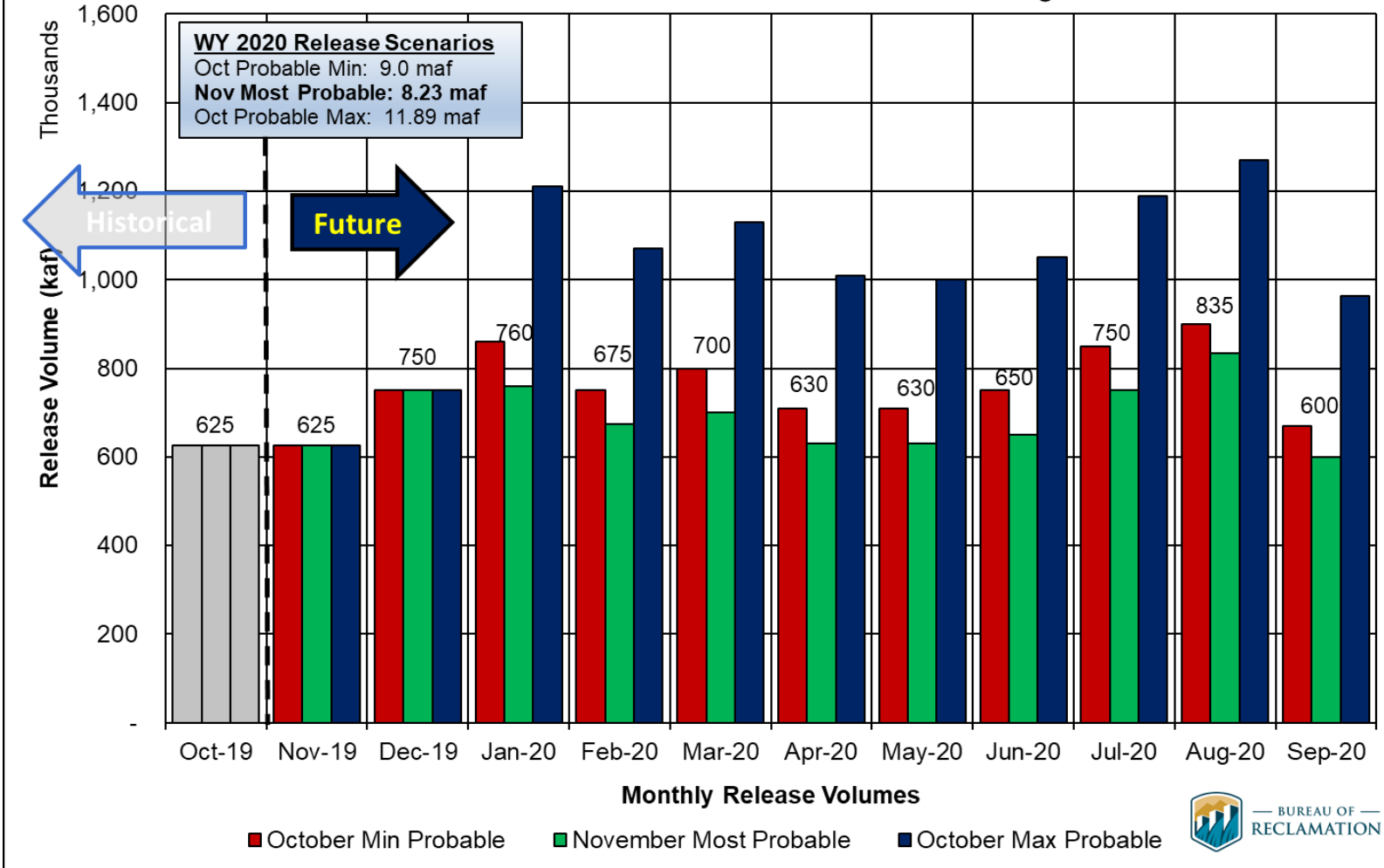


BUREAU OF
RECLAMATION



Powell Monthly Release Volumes

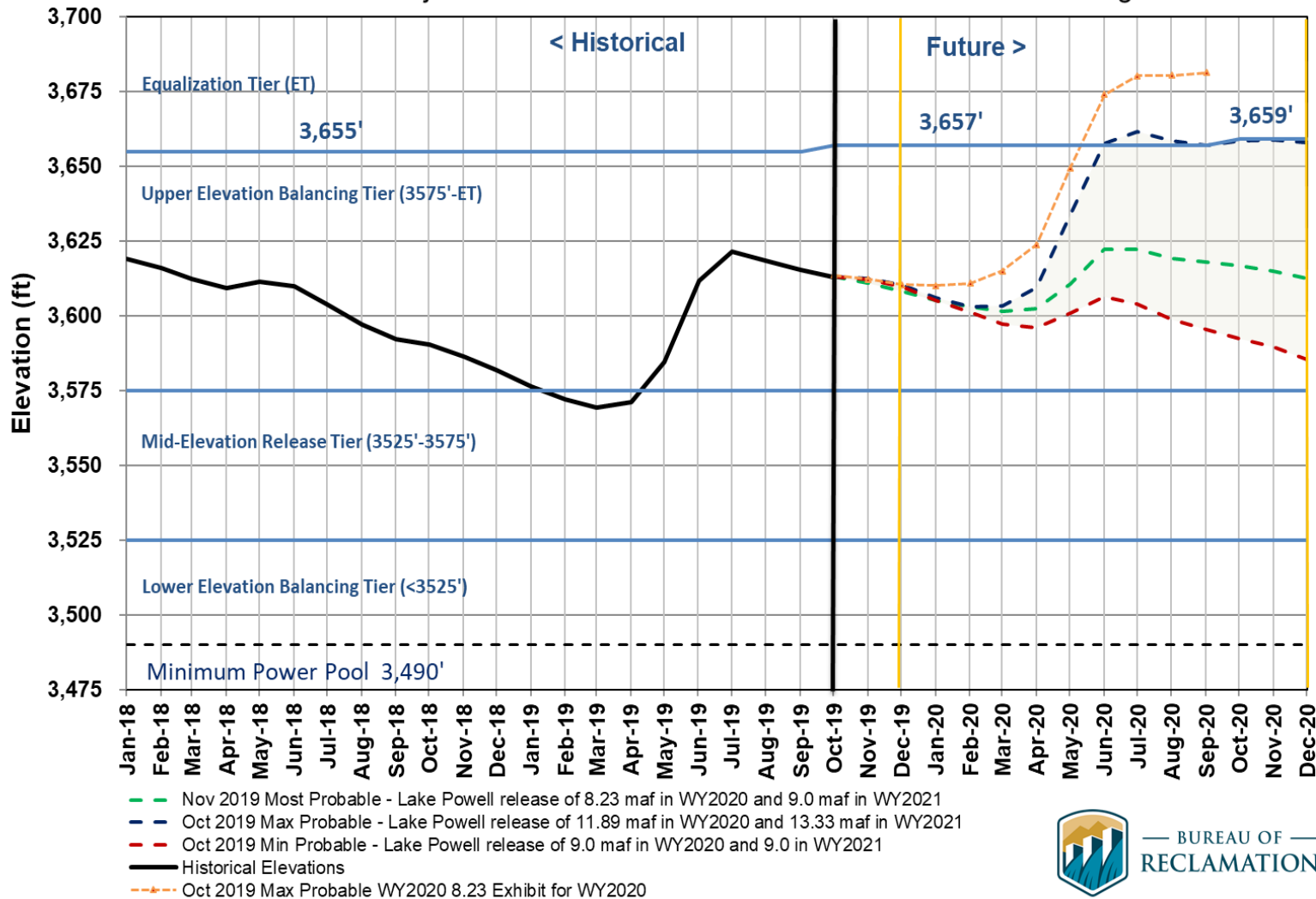
Potential Lake Powell Monthly Release Volume Distribution
Release Scenarios for Water Year 2020
Based on October and November 2019 Modeling



Powell Elevations

Lake Powell End of Month Elevations

Historic and Projected based on October and November 2019 Modeling



BUREAU OF
RECLAMATION



Glen Canyon Power Plant Planned Unit Outage Schedule for Water Year 2020

Unit Number	Oct 2019	Nov 2019	Dec 2019	Jan 2020	Feb 2020	Mar 2020	Apr 2020	May 2020	Jun 2020	Jul 2020	Aug 2020	Sep 2020
1												
2												
3												
4												
5												
6												
7												
8												
Units Available	5	6	6	6	6	6	6	6	6	6	6	6
Capacity (cfs)	16,800	20,500	20,400	20,300	20,300	20,300	20,300	20,700	20,700	20,700	20,700	20,600
Capacity (kaf/month)	1,060	1,160	1,420	1,330	1,170	1,250	1,220	1,320	1,280	1,330	1,320	1,310
Max (kaf) ¹	625	625	750	1,210	1,070	1,130	1,010	1,000	1,050	1,190	1,270	963
Most (kaf) ²	625	625	750	760	675	700	630	630	650	750	835	600
Min (kaf) ¹	625	625	750	860	750	800	710	710	750	850	900	670

NOV
MOST
OCT
MAX
11.89
8.23
9.0

(updated 11-20-2019)

1 Projected release, based on November 2019 Probable Inflow Projections and 24-Month Study model runs

2 Projected release, based on October 2019 Min and Max Probable Inflow Projections and 24-Month Study model runs

Heather E. Patno

hpatno@usbr.gov

Office: 801.524.3883

Mobile: 801.656.8200



— BUREAU OF —
RECLAMATION