

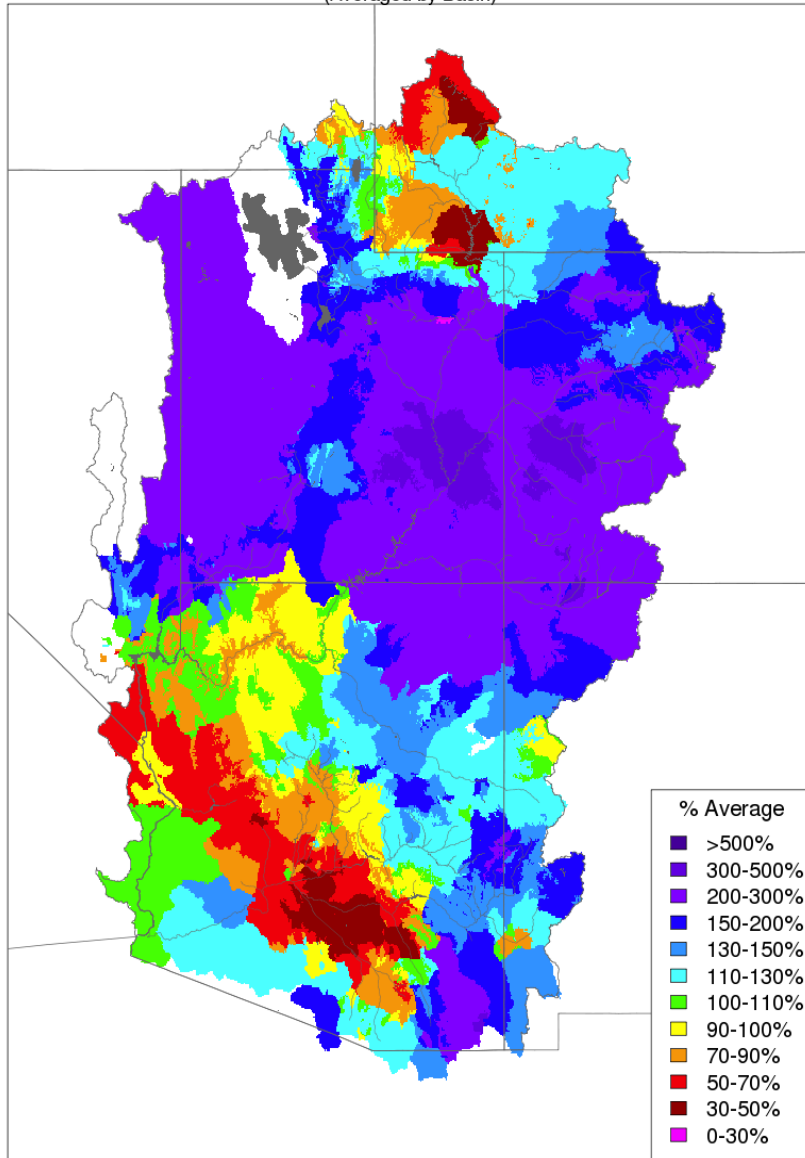
# Current Conditions and Forecasts

CRFS March 28, 2019

# March 1-26 Precipitation

Month to Date Precipitation - March 26 2019

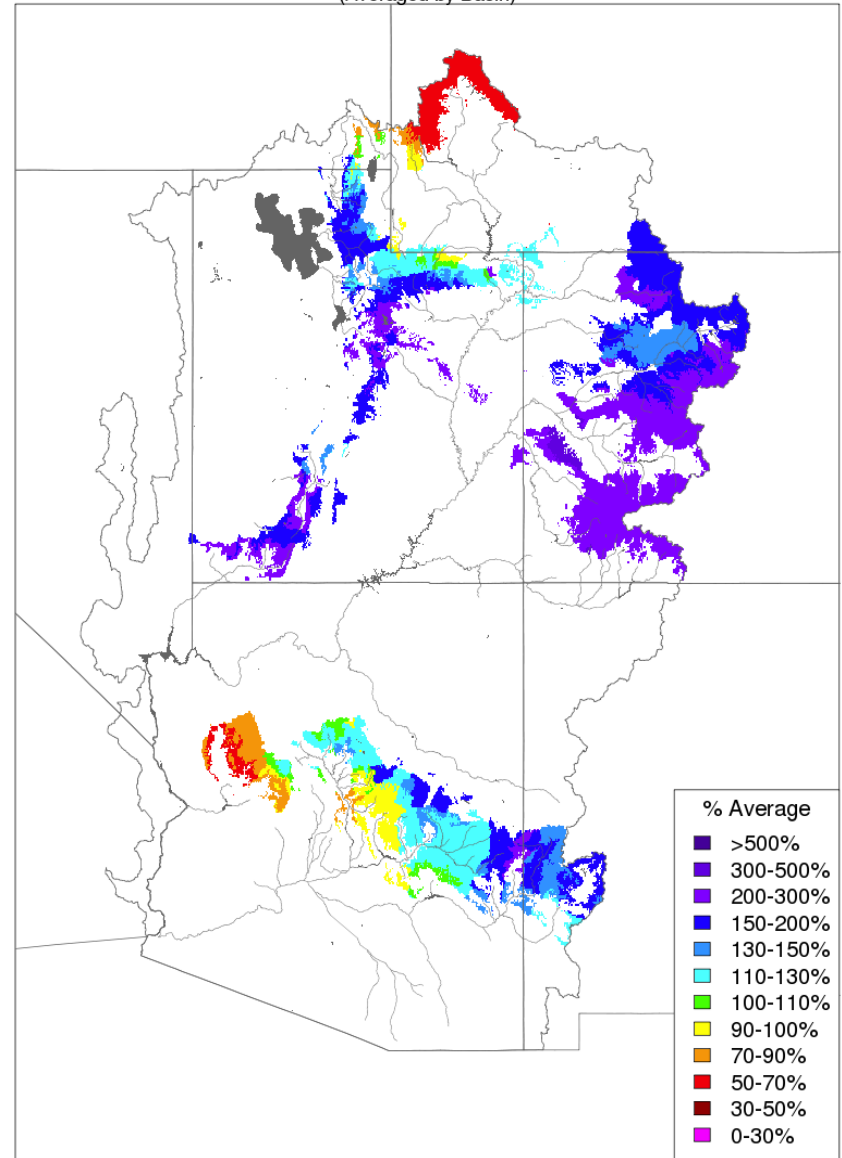
(Averaged by Basin)



Prepared by NOAA, Colorado Basin River Forecast Center  
Salt Lake City, Utah, [www.cbrfc.noaa.gov](http://www.cbrfc.noaa.gov)

Month to Date Precipitation - March 26 2019

(Averaged by Basin)

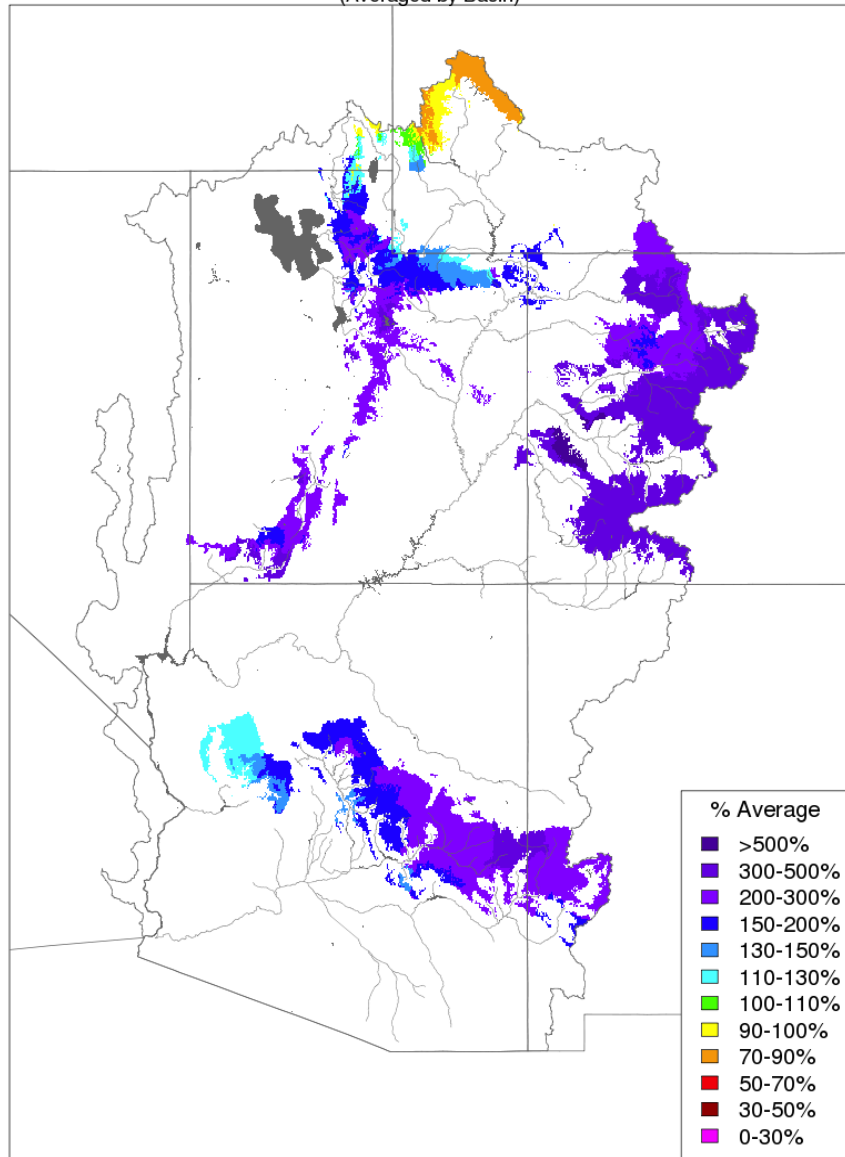


Prepared by NOAA, Colorado Basin River Forecast Center  
Salt Lake City, Utah, [www.cbrfc.noaa.gov](http://www.cbrfc.noaa.gov)

# March Precipitation – Wetter 1<sup>st</sup> half of month

Month to Date Precipitation - March 15 2019

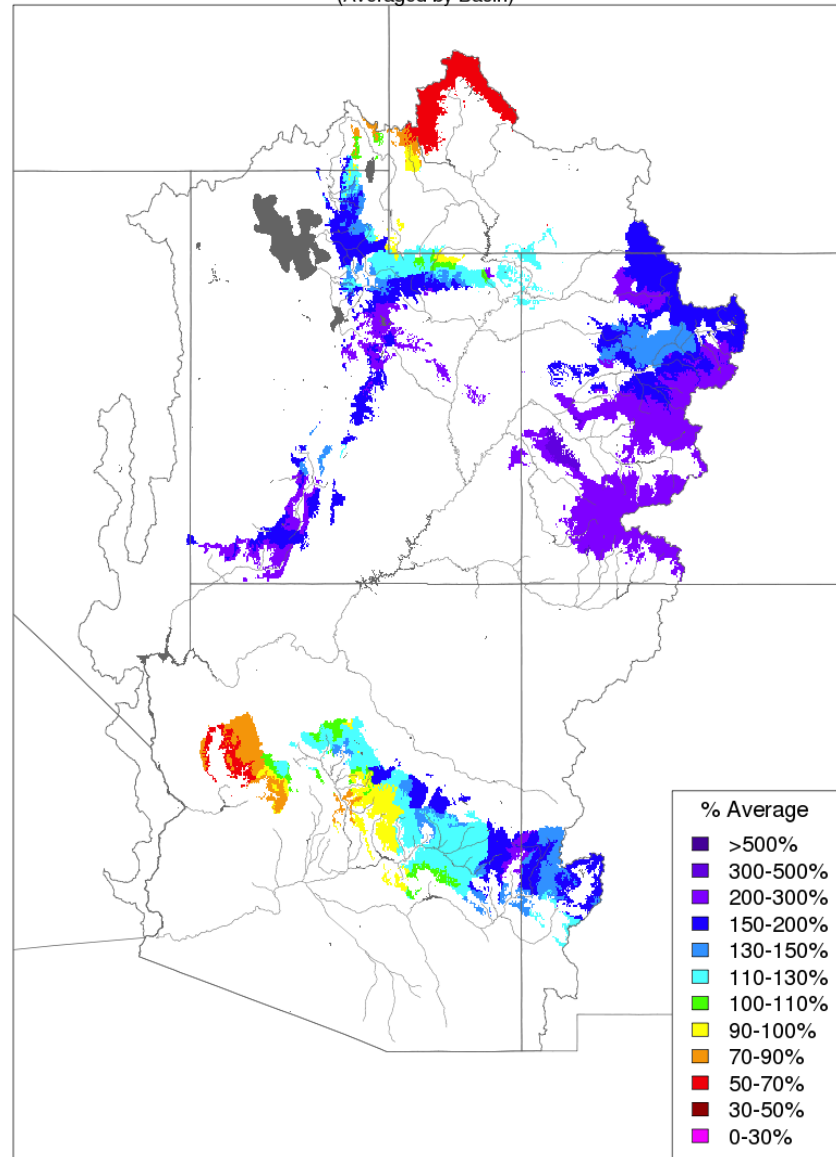
(Averaged by Basin)



Prepared by NOAA, Colorado Basin River Forecast Center  
Salt Lake City, Utah, [www.cbrfc.noaa.gov](http://www.cbrfc.noaa.gov)

Month to Date Precipitation - March 26 2019

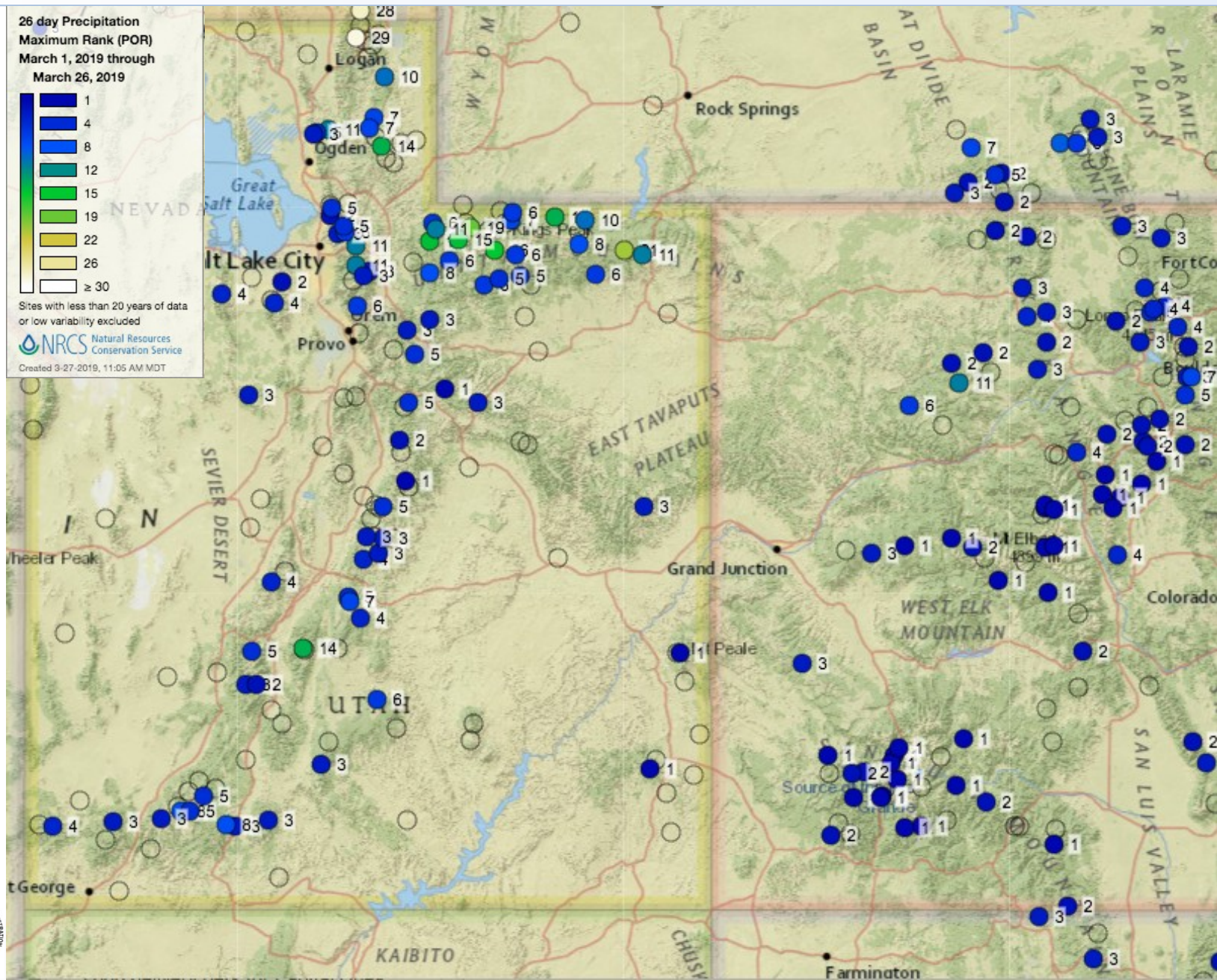
(Averaged by Basin)



Prepared by NOAA, Colorado Basin River Forecast Center  
Salt Lake City, Utah, [www.cbrfc.noaa.gov](http://www.cbrfc.noaa.gov)

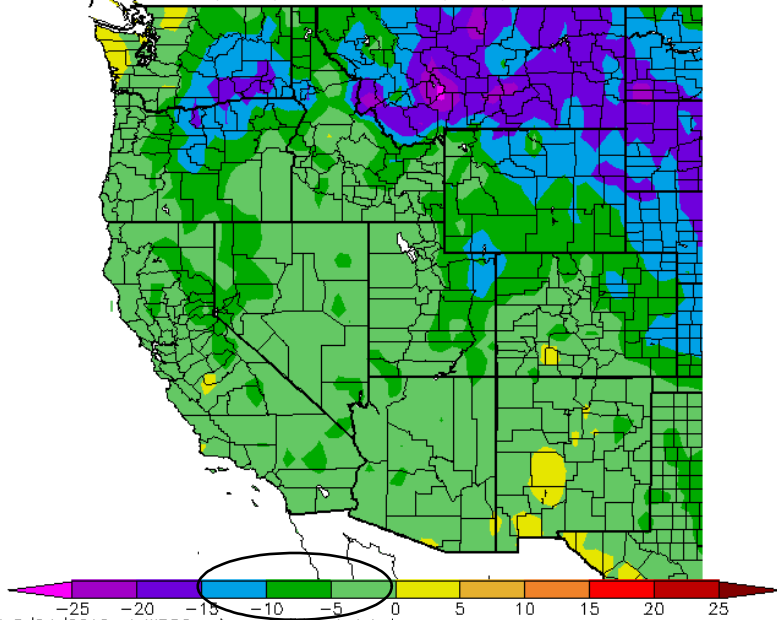


# March Precipitation – Record Wet 1<sup>st</sup> half of month

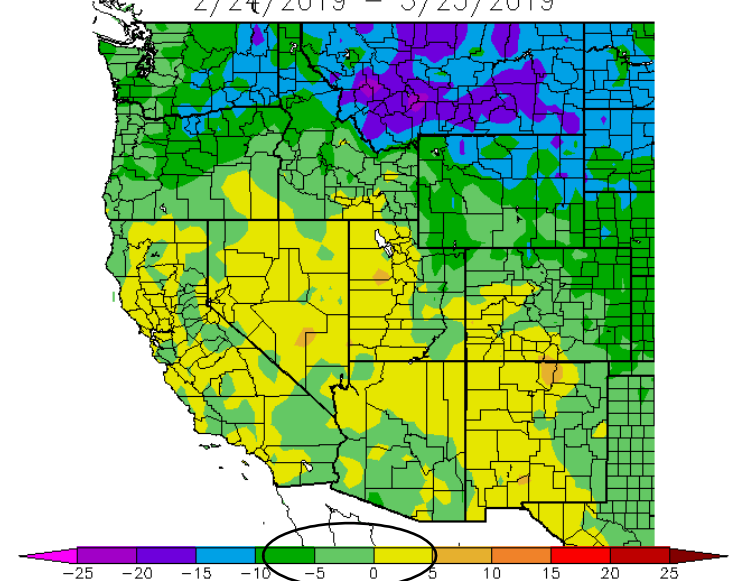


# March Temperatures – Near or Below normal

Av. Max. Temperature dep from Ave (deg F)  
2/22/2019 – 3/23/2019



Av. Min. Temperature dep from Ave (deg. F)  
2/24/2019 – 3/25/2019

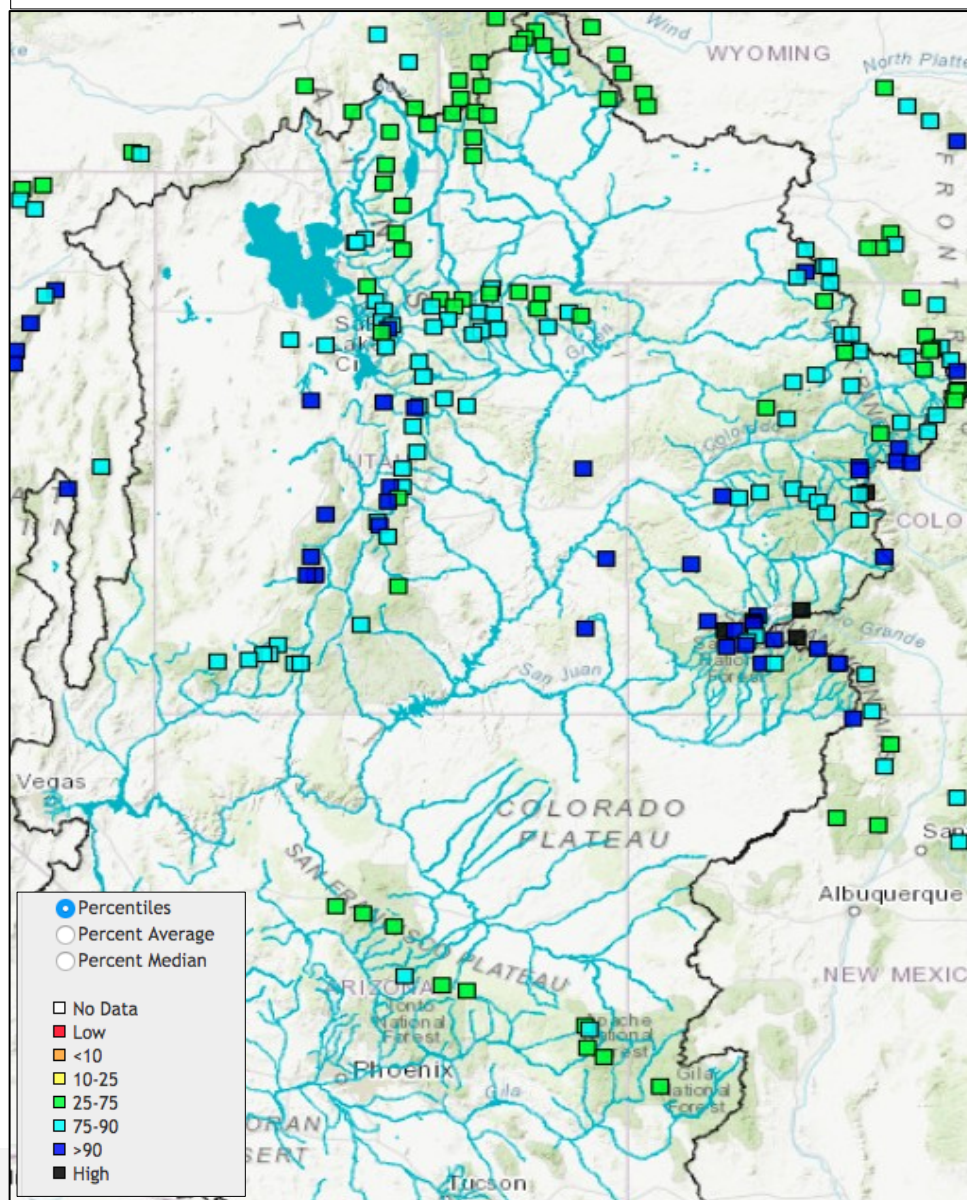


The message: Minimal snowmelt and above normal low elevation snow remains



# Snowpack Conditions (Percentiles - historical ranking) - SNOTEL SITES

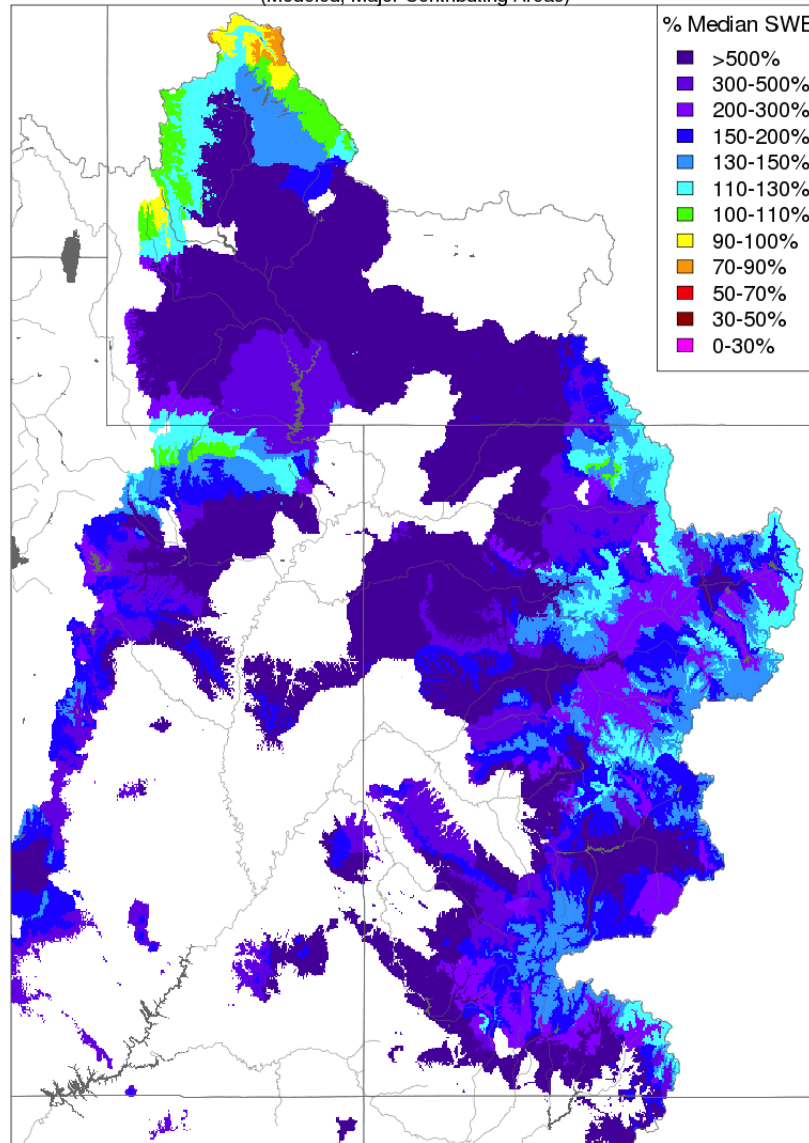
March 28, 2019



# CBRFC Model Snow

## Snow Conditions - March 25 2019

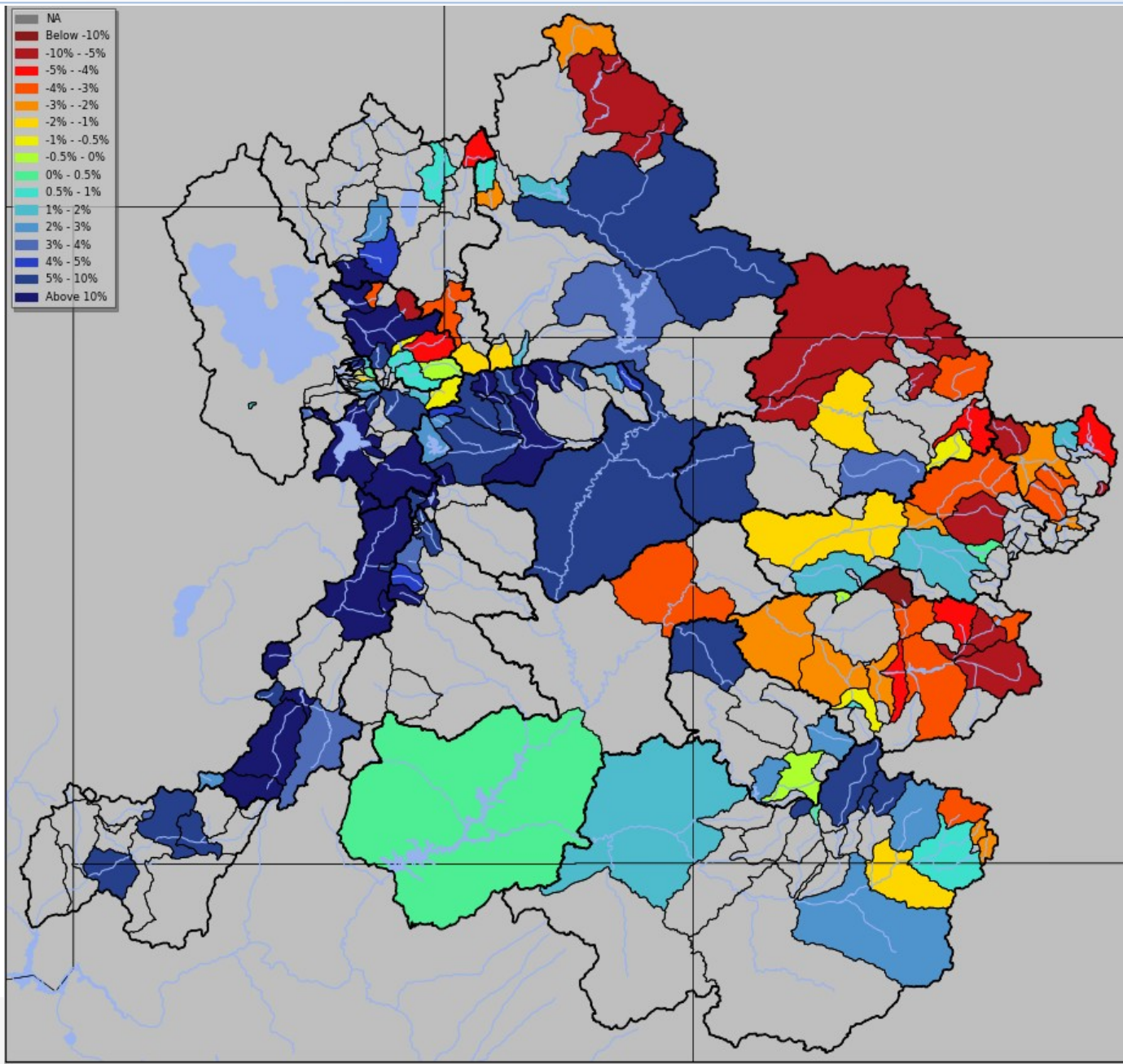
(Modeled, Major Contributing Areas)



Prepared by NOAA, Colorado Basin River Forecast Center  
Salt Lake City, Utah, [www.cbrfc.noaa.gov](http://www.cbrfc.noaa.gov)

# Trend in model guidance between 3/18 and 3/26 2019

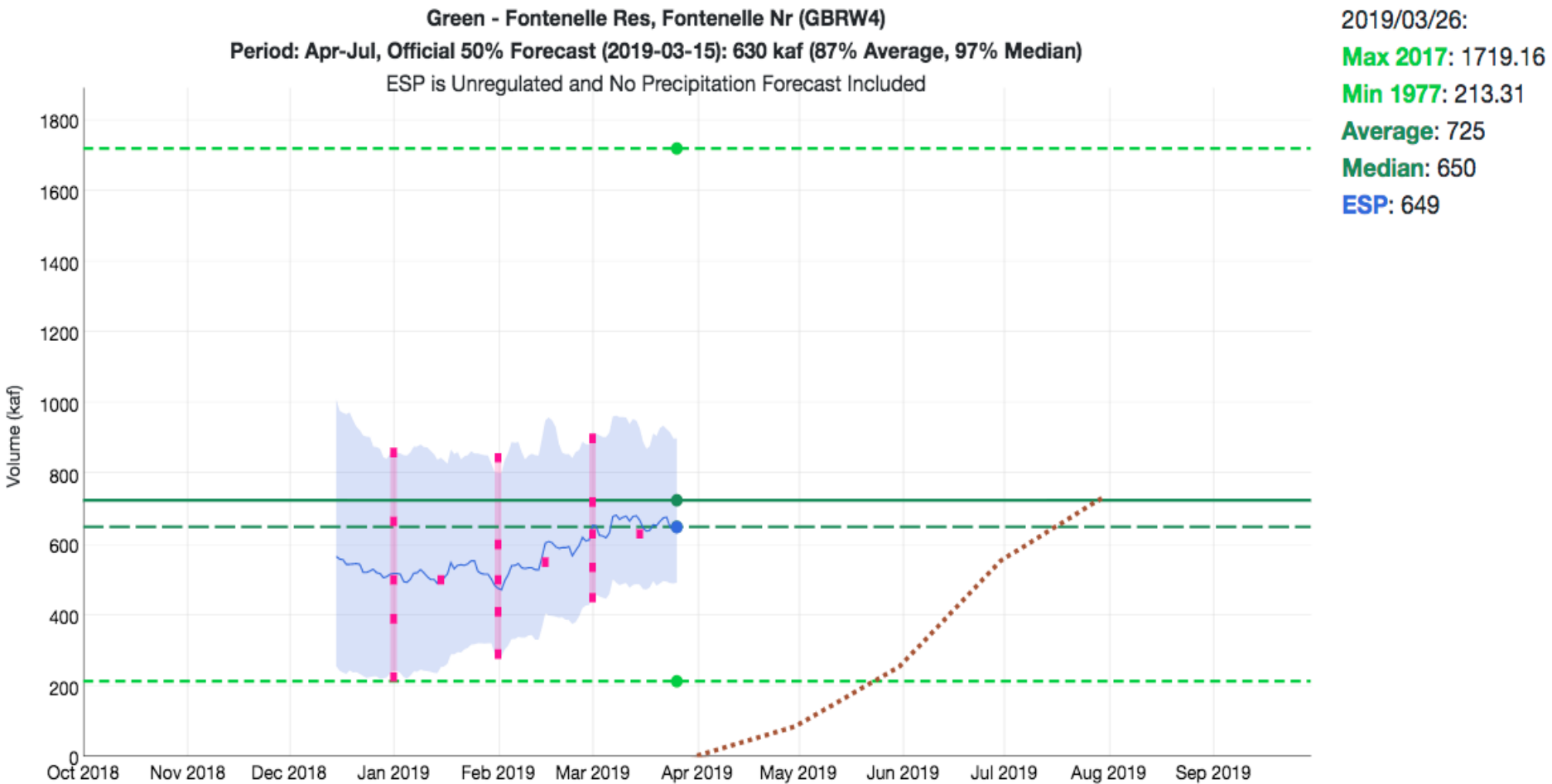
Change in  
April-July volume  
as a % of average





# Forecast Evolution Plot – Fontenelle Inflow

## Water Supply Forecast



# Forecast Evolution Plot – Flaming Gorge Inflow

## Water Supply Forecast

Green - Flaming Gorge Res, Flaming Gorge Dam, At (GRNU1)  
Period: Apr-Jul, Official 50% Forecast (2019-03-15): 830 kaf (85% Average, 100% Median)  
ESP is Unregulated and No Precipitation Forecast Included

2019/03/26:

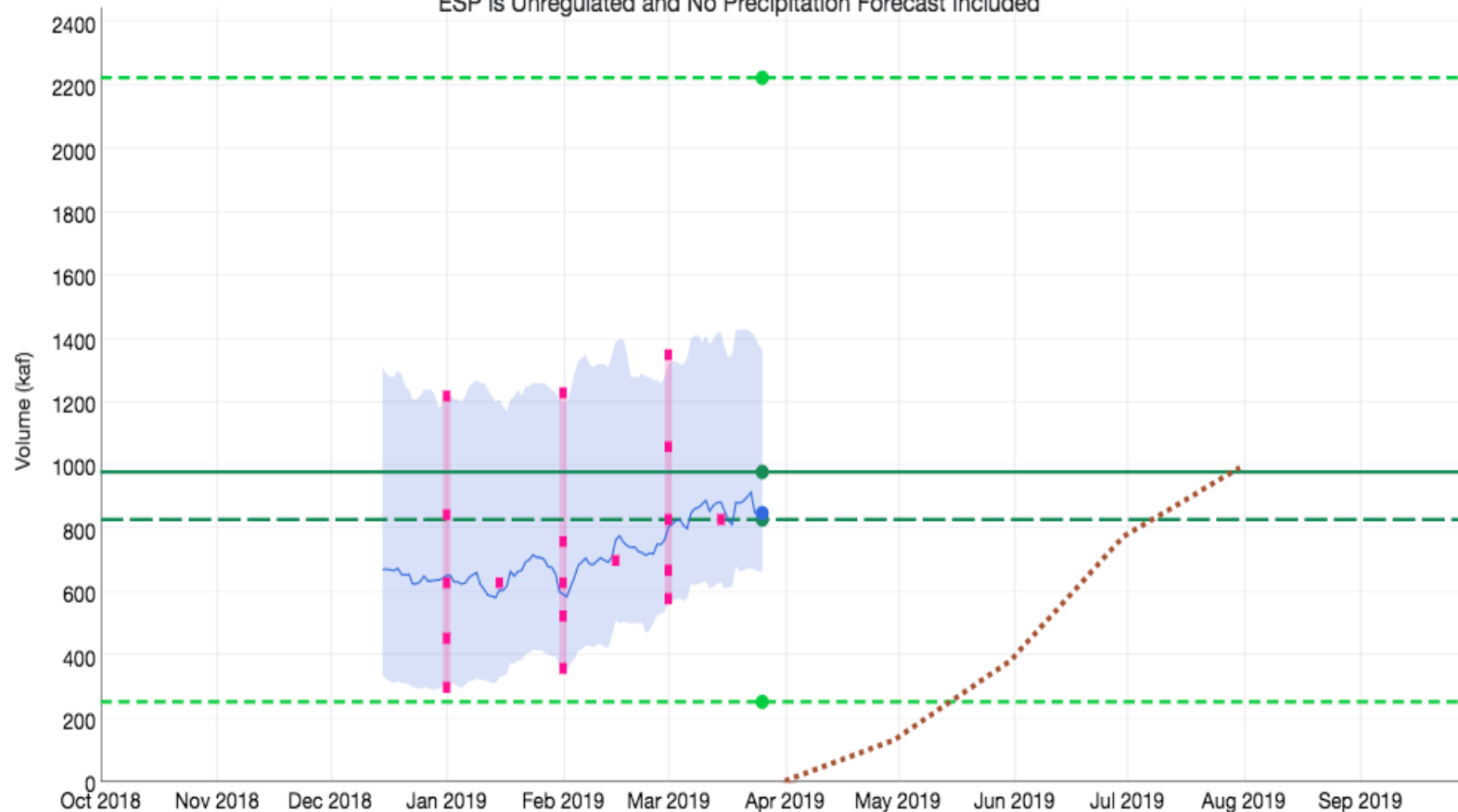
Max 1986: 2224.35

Min 1977: 254.3

Average: 980

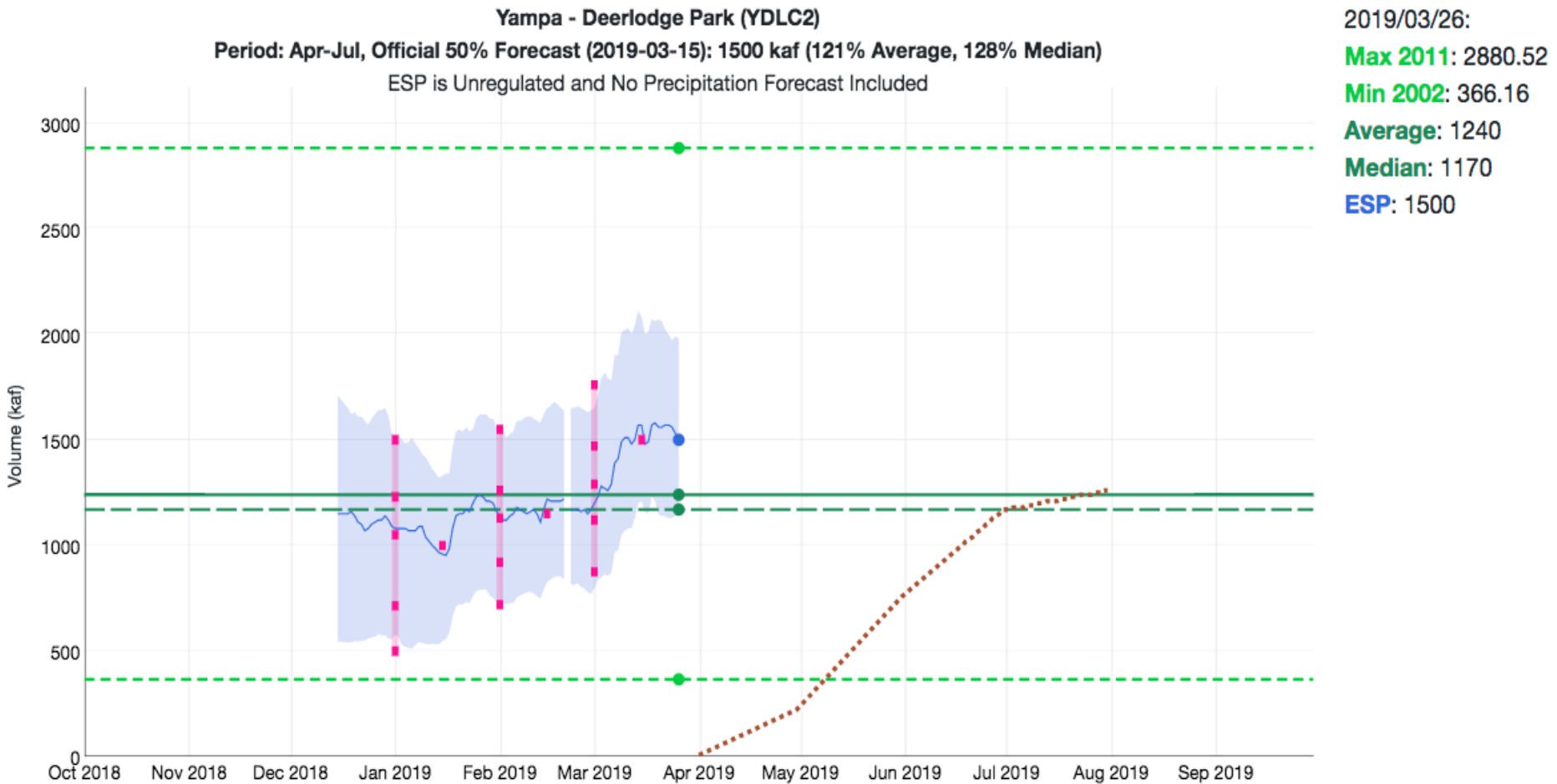
Median: 830

ESP: 850



# Forecast Evolution Plot – Yampa at Deerlodge

## Water Supply Forecast





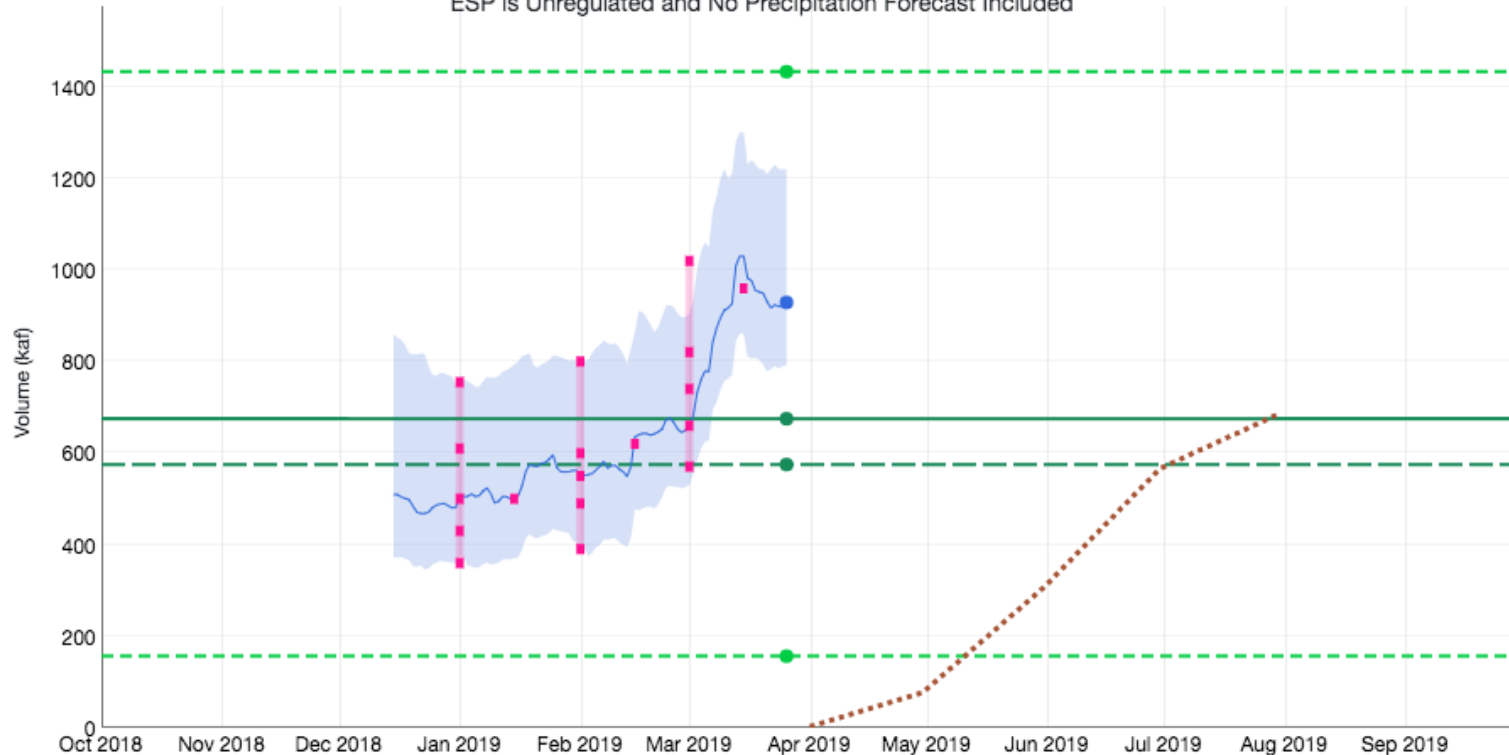
# Forecast Evolution Plot – Blue Mesa Inflow

## Water Supply Forecast

Gunnison - Blue Mesa Res (BMDC2)

Period: Apr-Jul, Official 50% Forecast (2019-03-15): 960 kaf (142% Average, 167% Median)

ESP is Unregulated and No Precipitation Forecast Included



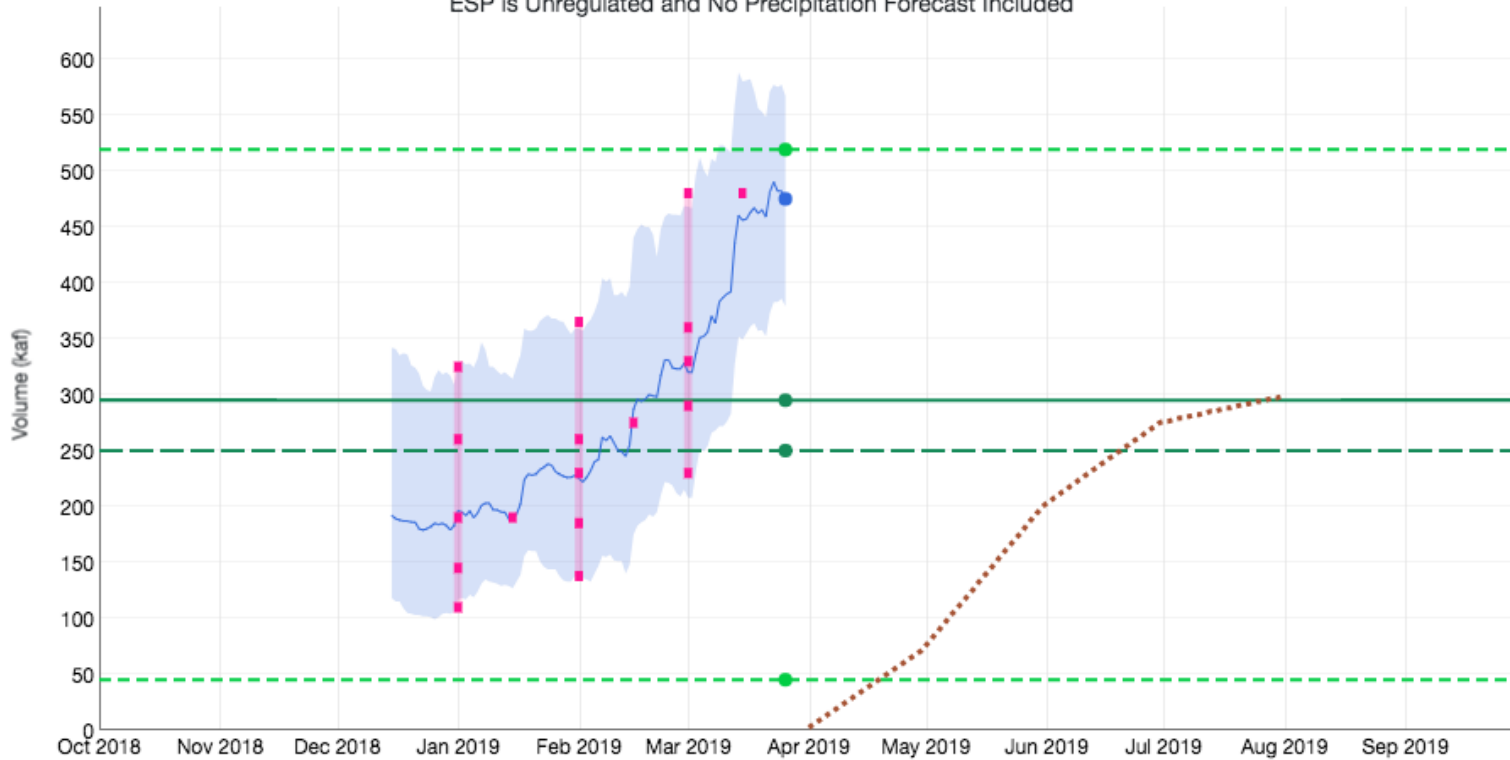
2019/03/26:  
Max 1984: 1433.01  
Min 2002: 156.55  
Average: 675  
Median: 575  
ESP: 929

# Forecast Evolution Plot – McPhee Inflow

## Water Supply Forecast

Dolores - McPhee Res (MPHC2)  
Period: Apr-Jul, Official 50% Forecast (2019-03-15): 480 kaf (163% Average, 192% Median)  
ESP is Unregulated and No Precipitation Forecast Included

2019/03/26:  
**Max 1993:** 519.12  
**Min 2002:** 45.16  
**Average:** 295  
**Median:** 250  
**ESP:** 475



# Forecast Evolution Plot – Navajo Inflow

## Water Supply Forecast

San Juan - Navajo Res, Archuleta, Nr (NVRN5)

Period: Apr-Jul, Official 50% Forecast (2019-03-15): 970 kaf (132% Average, 139% Median)

ESP is Unregulated and No Precipitation Forecast Included

2019/03/26:

**Max 1979:** 1776.84

**Min 2002:** 36.74

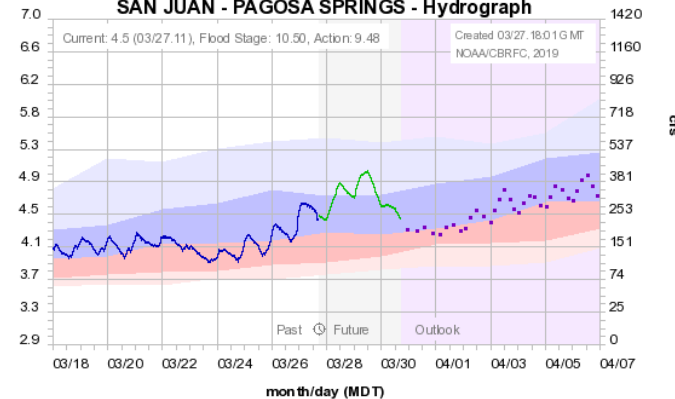
**Average:** 735

**Median:** 700

**ESP:** 944



Colorado Basin River Forecast Center  
SAN JUAN - PAGOSA SPRINGS - Hydrograph



Simulated ■ Observed — Forecast (03/27.14:00) — Outlook (increasing uncertainty) ●

Historical Exceedance Probability (USGS): 90-75% ■ 75-50% ■ 50-25% ■ 25-10% ■



# Forecast Evolution Plot – Lake Powell

## Water Supply Forecast

Colorado - Lake Powell, Glen Cyn Dam, At (GLDA3)  
Period: Apr-Jul, Official 50% Forecast (2019-03-15): 9500 kaf (133% Average, 147% Median)  
ESP is Unregulated and No Precipitation Forecast Included

2019/03/26:

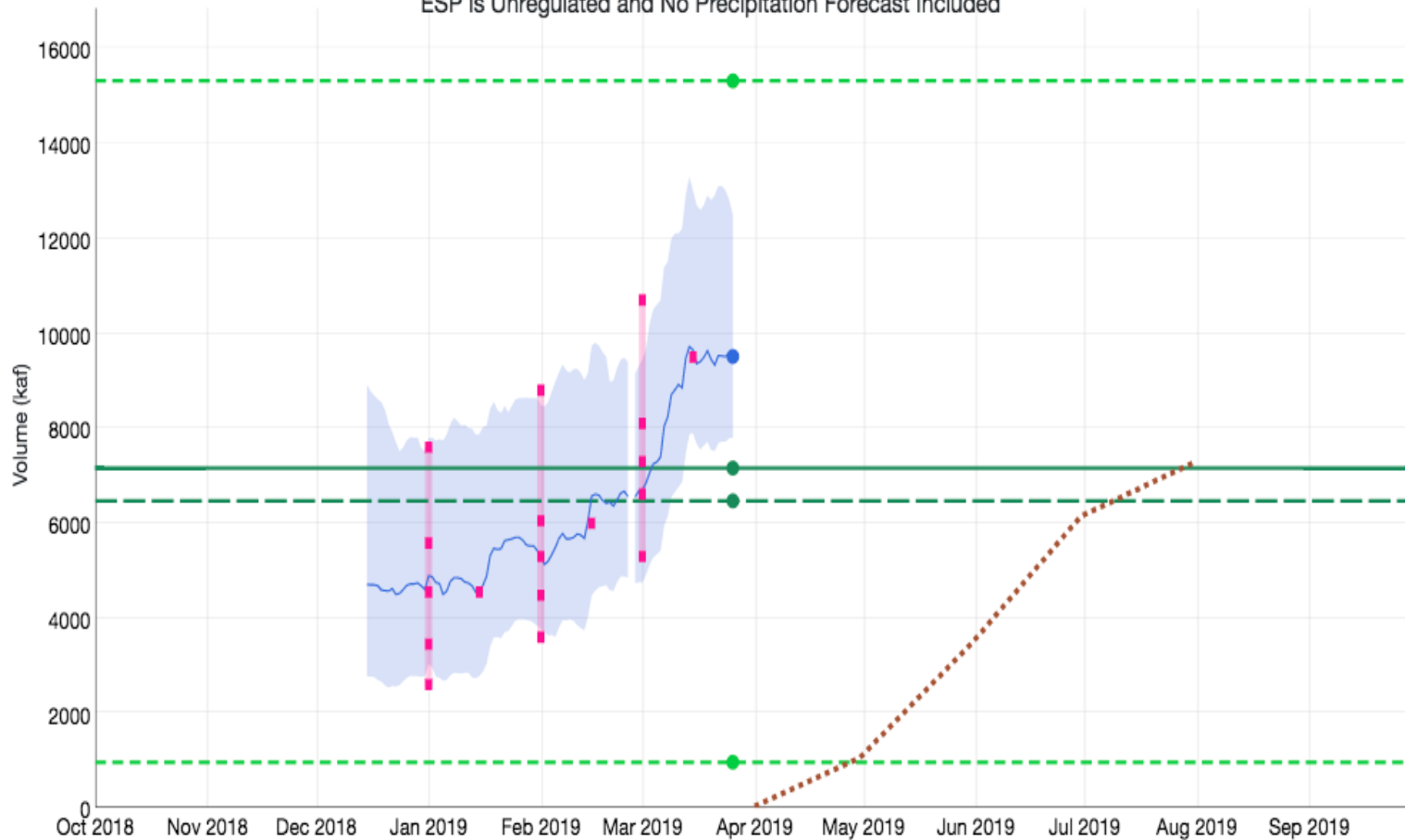
**Max 1984:** 15316.11

**Min 2002:** 963.96

**Average:** 7160

**Median:** 6470

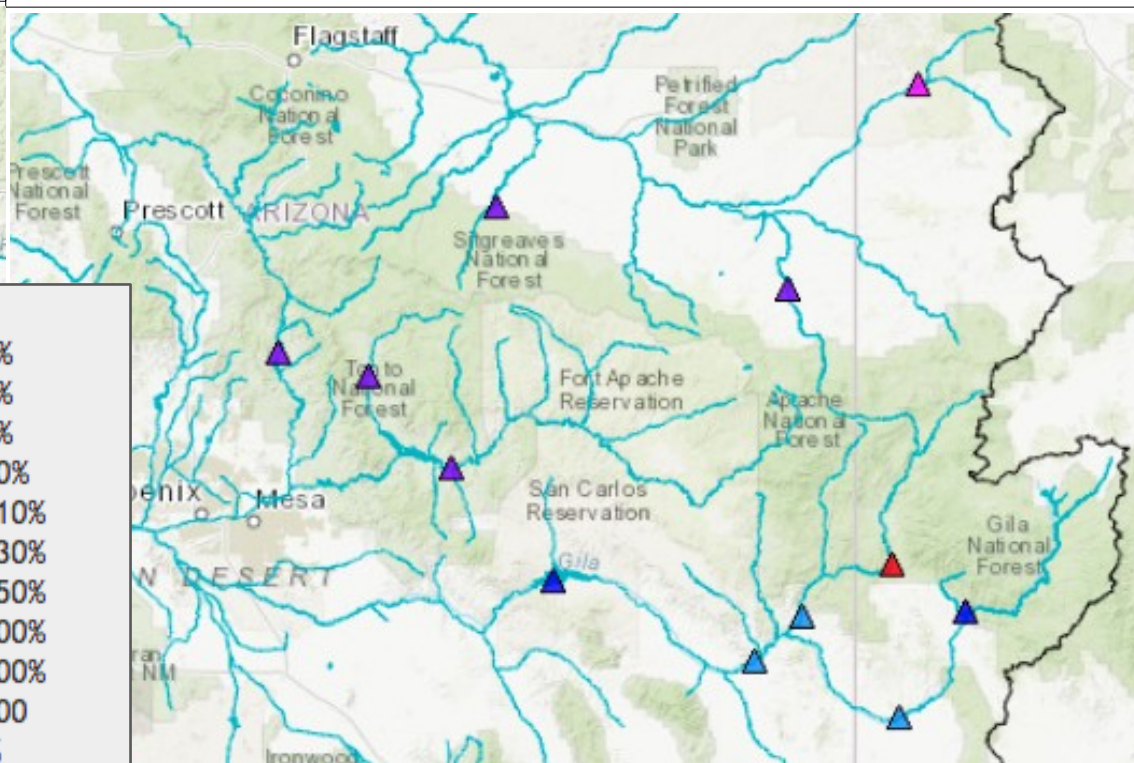
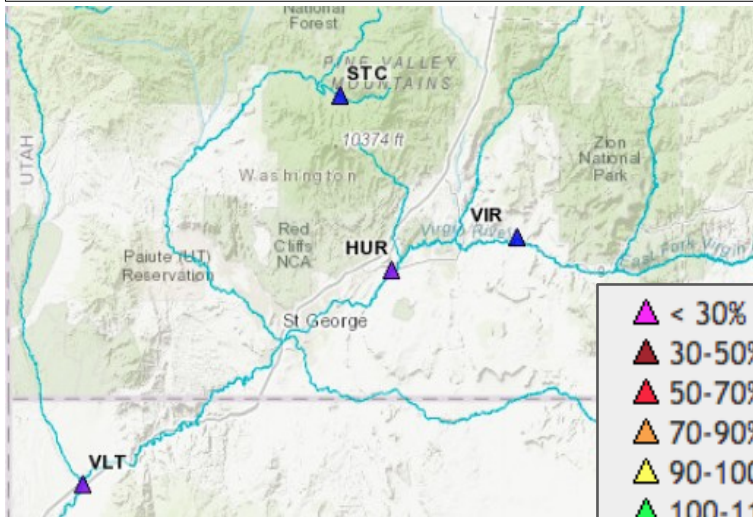
**ESP:** 9510



# Lower Colorado River Water Supply

**Virgin River Basin  
April – July Forecast Volume  
(Latest ESP % Median)**

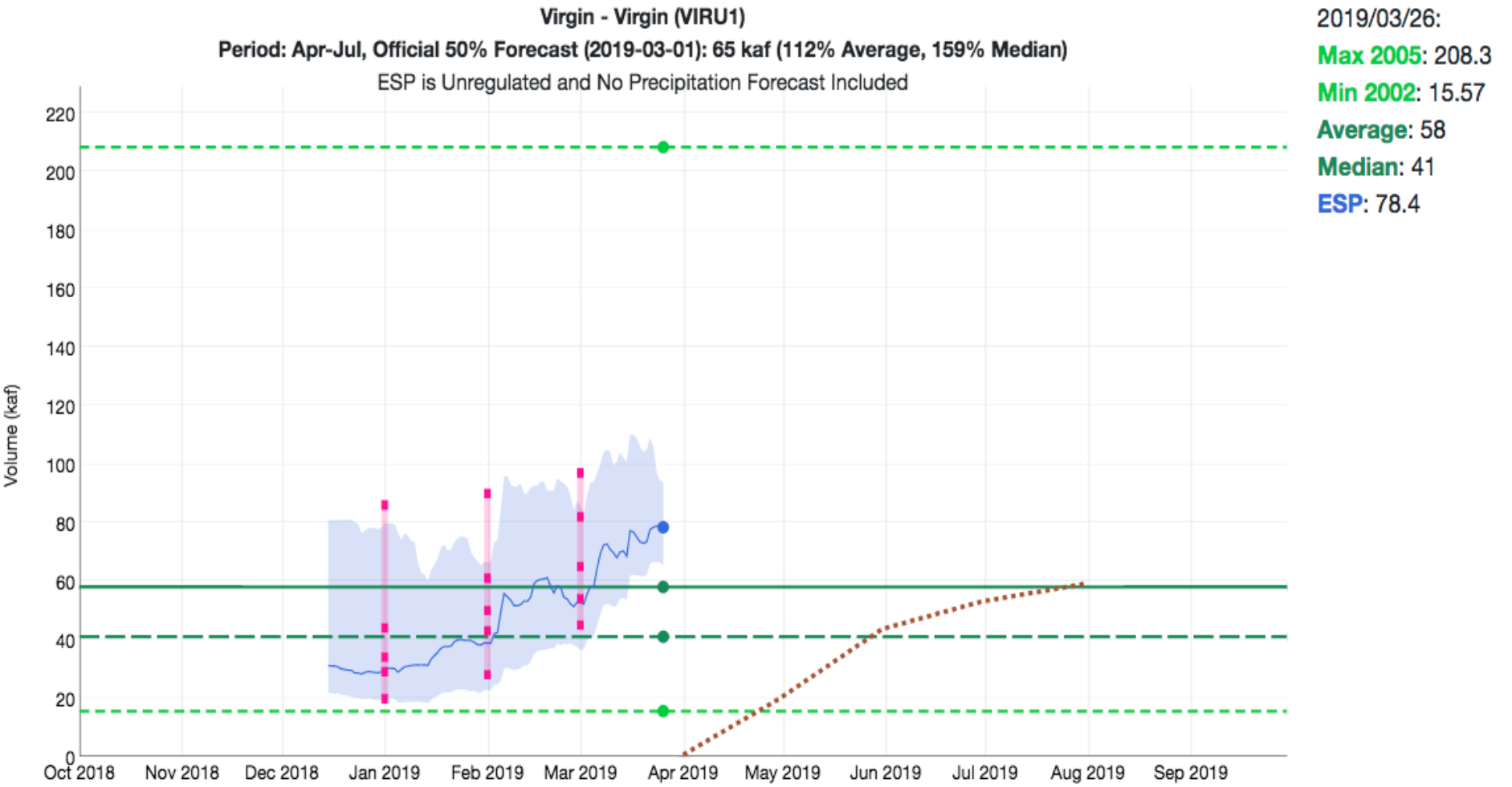
**Gila/Salt/Verde/Little Colorado River Basins  
January – May Forecast Volume  
(Latest ESP % Median)**



- ▲ < 30%
- ▲ 30-50%
- ▲ 50-70%
- ▲ 70-90%
- ▲ 90-100%
- ▲ 100-110%
- ▲ 110-130%
- ▲ 130-150%
- ▲ 150-200%
- ▲ 200-300%
- ▲ 300-500%
- ▲ >500%
- ▲ Regulated
- △ No Forecast

# Forecast Evolution Plot – Virgin River at Virgin

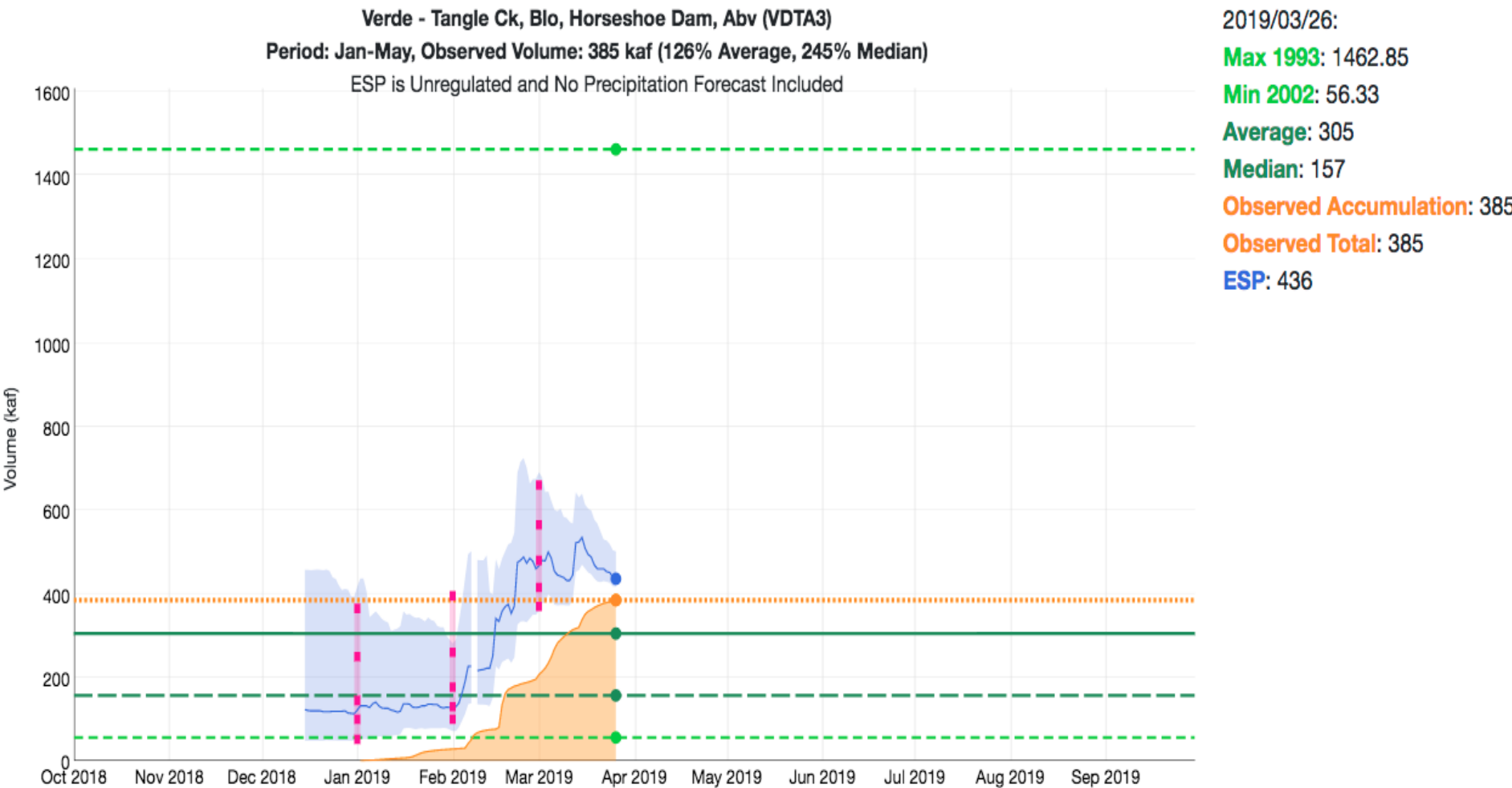
## Water Supply Forecast





# Forecast Evolution Plot: Verde below Tangle Creek, above Horseshoe

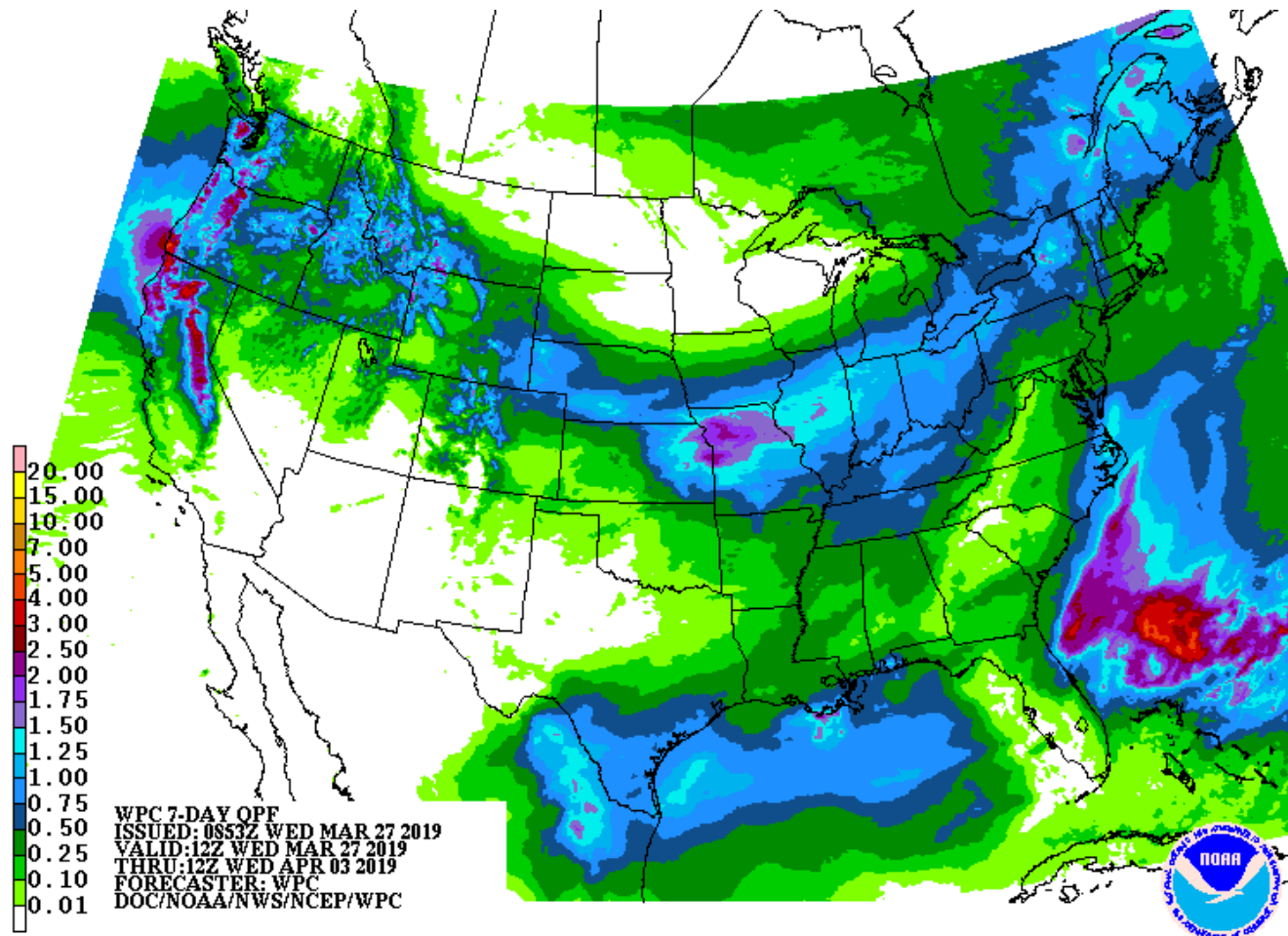
## Water Supply Forecast



## Upcoming Weather Pattern: Increasing chance for precipitation northern areas as we get into the middle / later part of next week.

Perhaps a more significant trough of low pressure (mountain snow) late next week (low confidence).  
Systems are not as wet as those we've experienced the last couple of months.

Lower Colorado Basin less likely to see much impacts (We have entered a climatological drier period)



# Upcoming Weather Pattern: Models continue to indicate better chances for above average precipitation in April.

