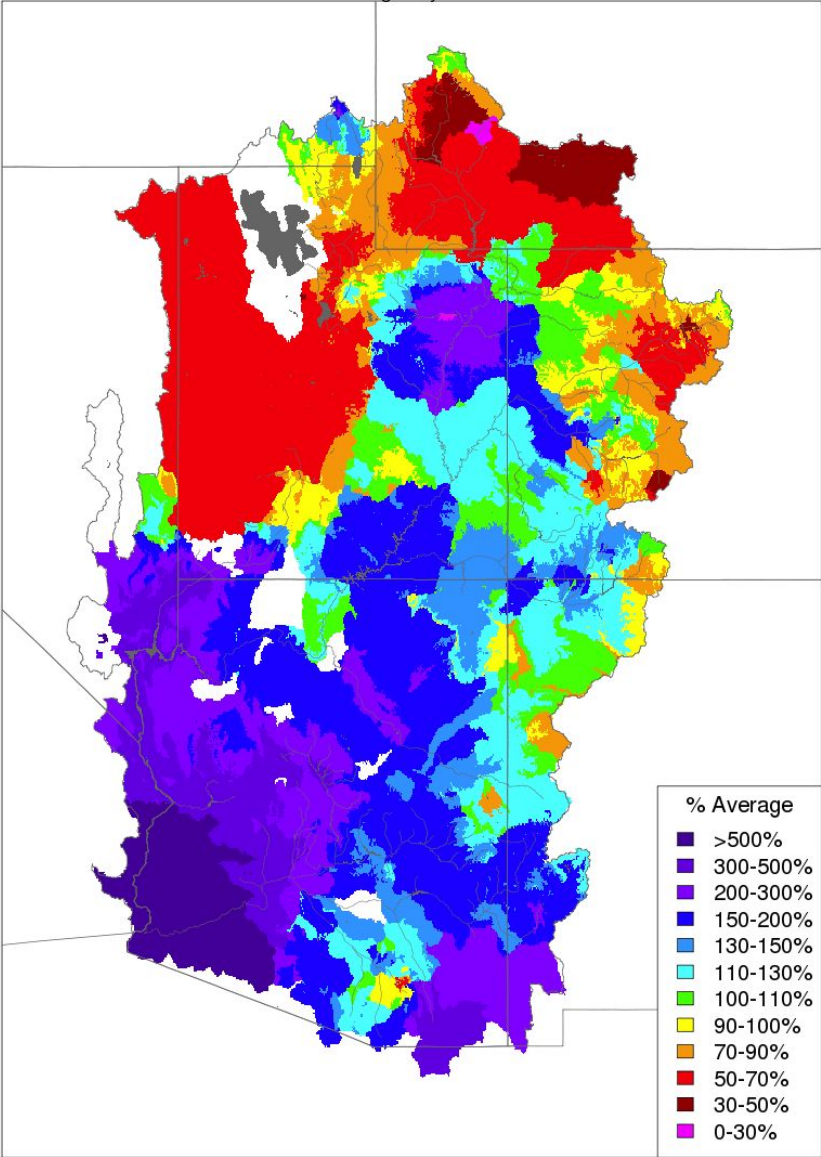


Current Conditions and Forecasts

CRFS March 26, 2020

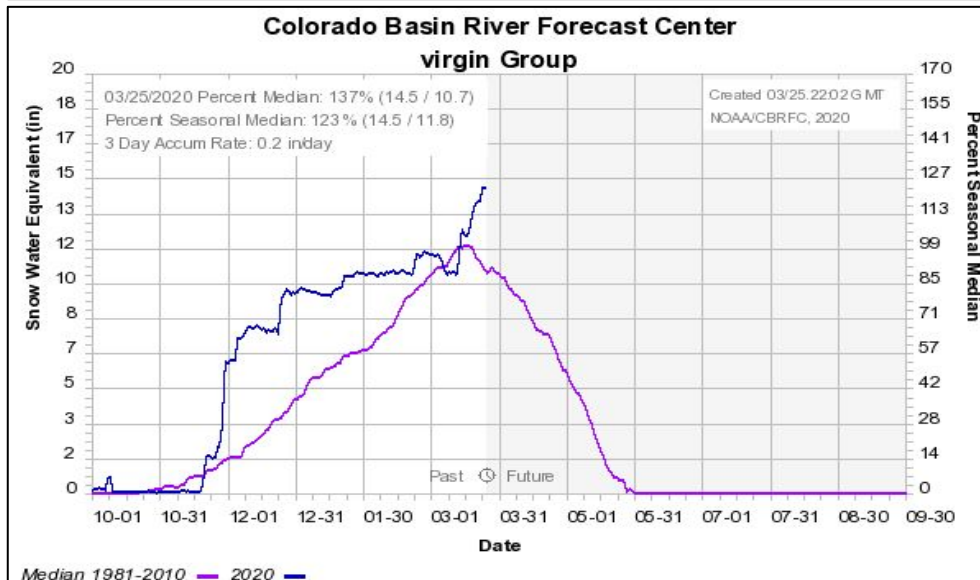
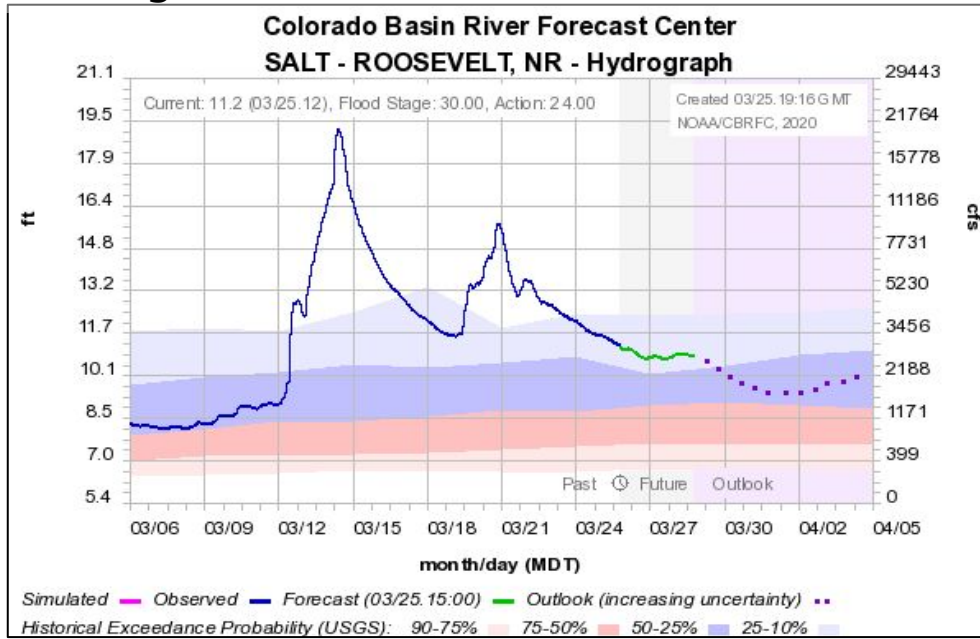
March 1-25 Precipitation

Month to Date Precipitation - March 25 2020
Averaged by Basin



Prepared by NOAA, Colorado Basin River Forecast Center
Salt Lake City, Utah, www.cbrfc.noaa.gov

Two big March events in the Lower Colorado

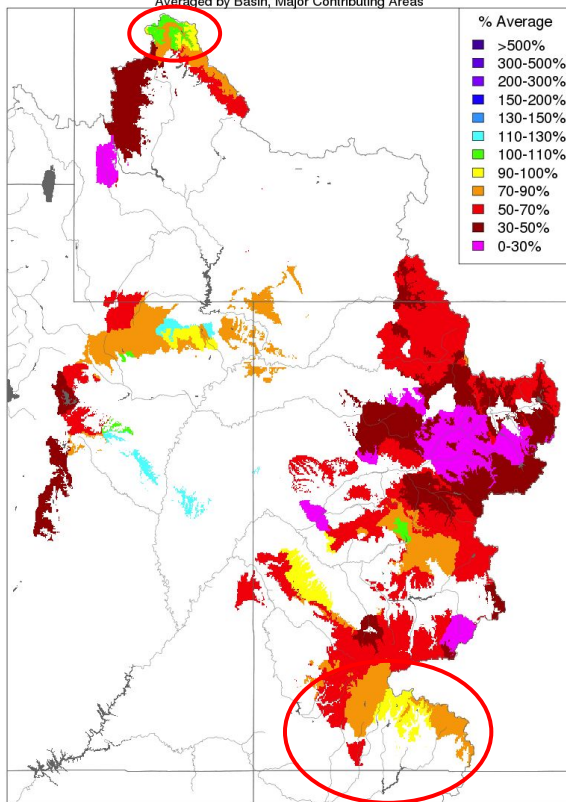


March 1-25 Precipitation

Upper Colorado mostly dry until ~March 19

Month to Date Precipitation - March 18 2020

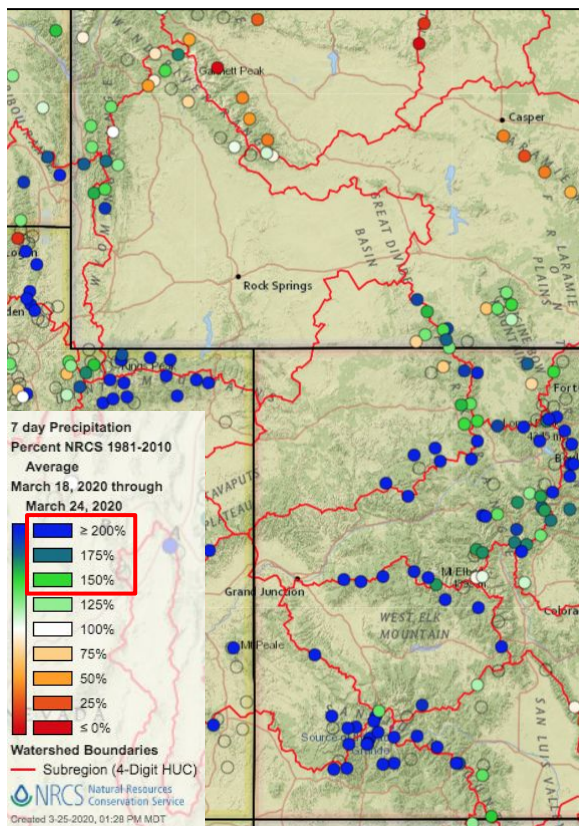
Averaged by Basin, Major Contributing Areas



Prepared by NOAA, Colorado Basin River Forecast Center
Salt Lake City, Utah, www.cbrfc.noaa.gov

- Very northern tip of Upper Green near average
- San Juan got some precipitation from storm March 12-14

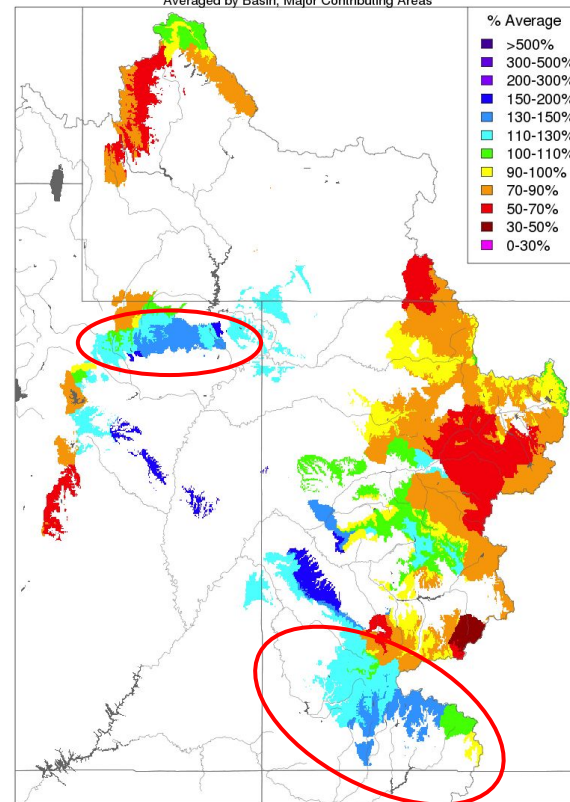
March 18 - 24 Precipitation %Average



Gunnison/Dolores/San Juan: 230-300%
Upper Colorado headwaters: 190%
Yampa/White: 175%
Upper Green: 150%

Month to Date Precipitation - March 25 2020

Averaged by Basin, Major Contributing Areas



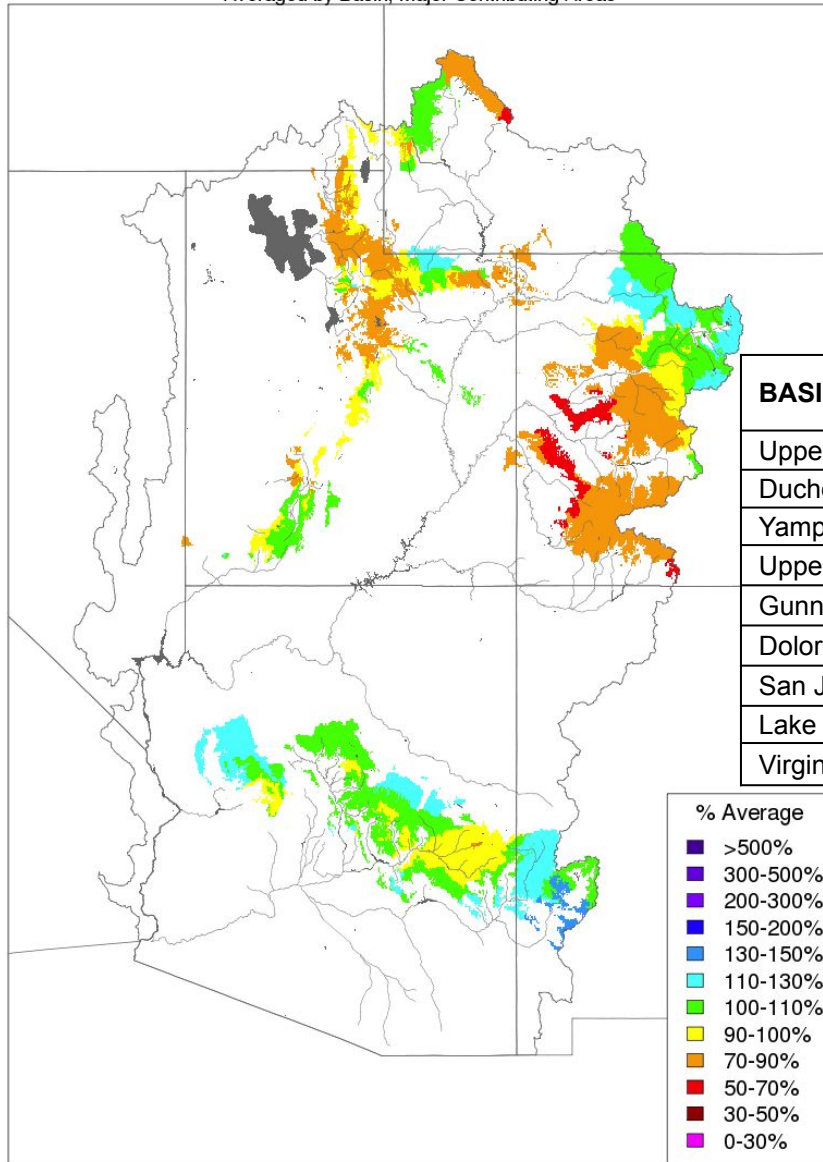
Prepared by NOAA, Colorado Basin River Forecast Center
Salt Lake City, Utah, www.cbrfc.noaa.gov

- Entire area has improved over the last week
- San Juan, Dolores, Duchesne

Water Year Precipitation

Water Year Precipitation, October 2019 - February 2020

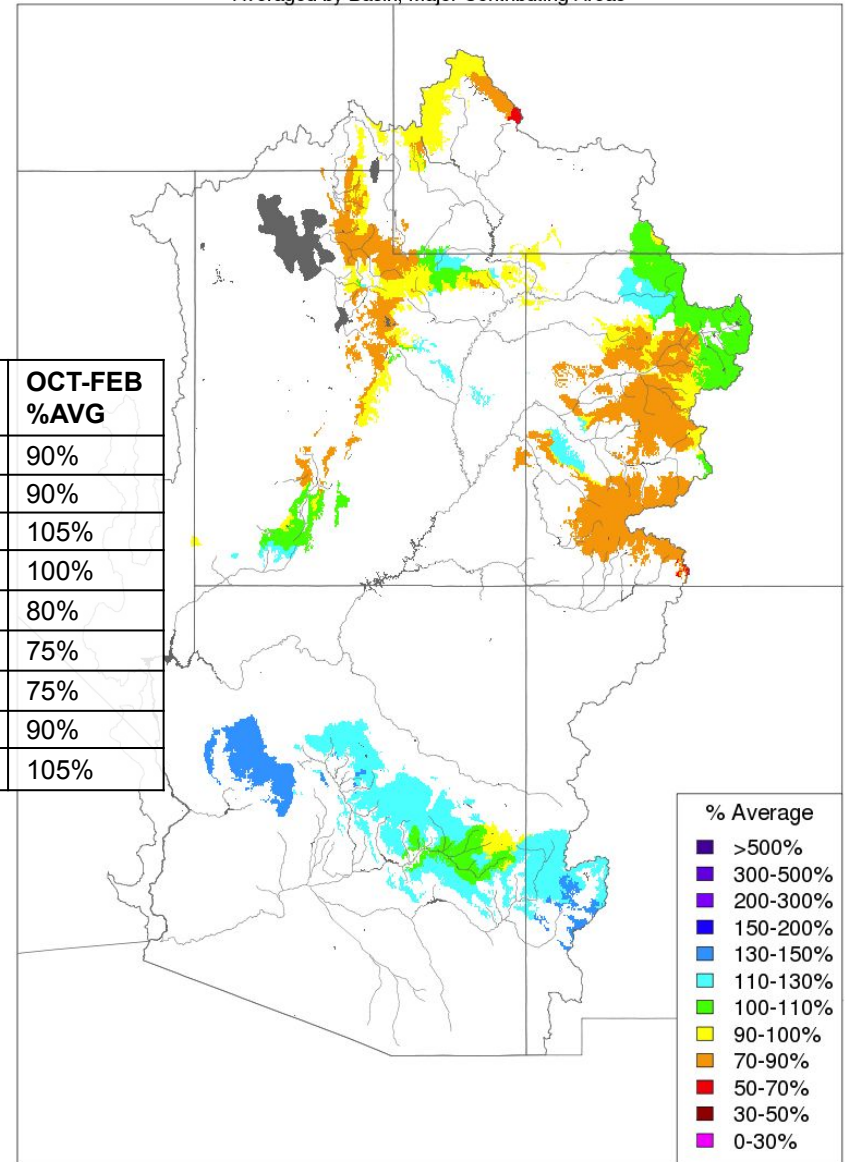
Averaged by Basin, Major Contributing Areas



Prepared by NOAA, Colorado Basin River Forecast Center
Salt Lake City, Utah, www.cbrfc.noaa.gov

Seasonal to Date Precipitation - March 25 2020

Averaged by Basin, Major Contributing Areas



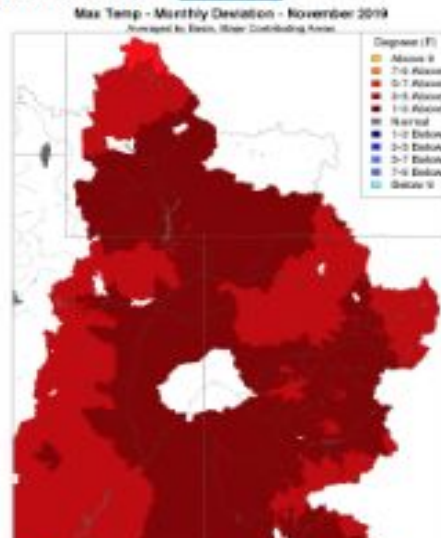
Prepared by NOAA, Colorado Basin River Forecast Center
Salt Lake City, Utah, www.cbrfc.noaa.gov

Water Year Monthly Temperature Anomaly

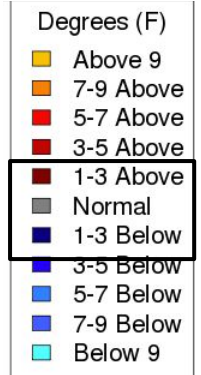
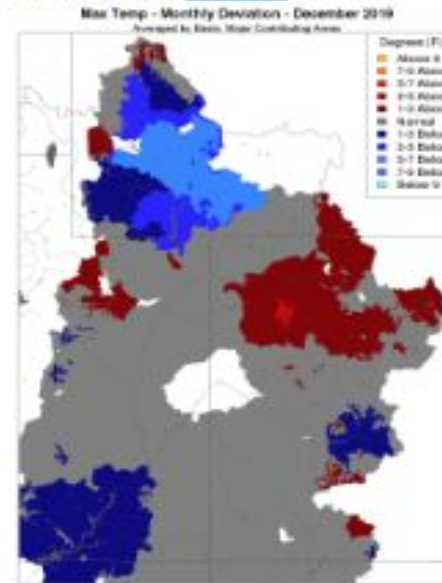
October [Data File](#)



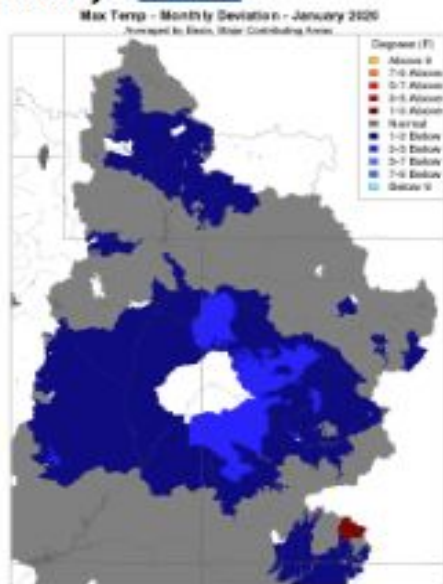
November [Data File](#)



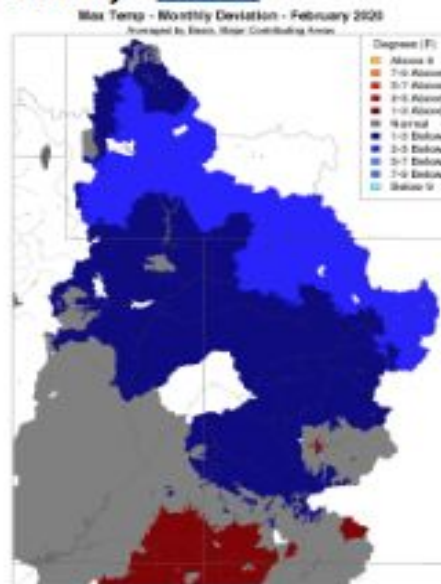
December [Data File](#)



January [Data File](#)



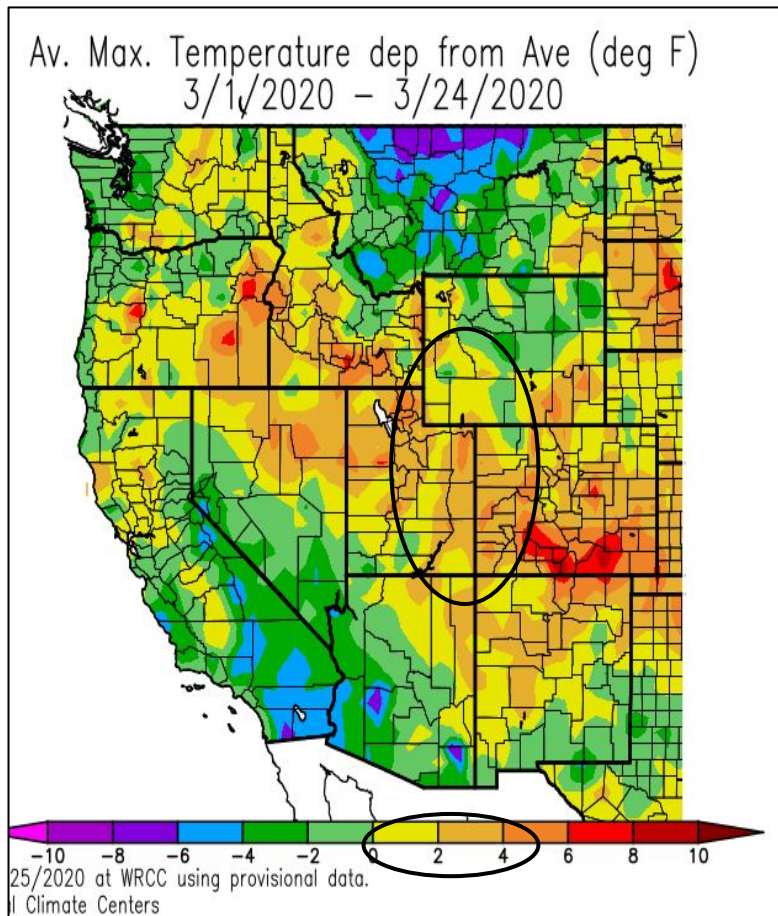
February [Data File](#)



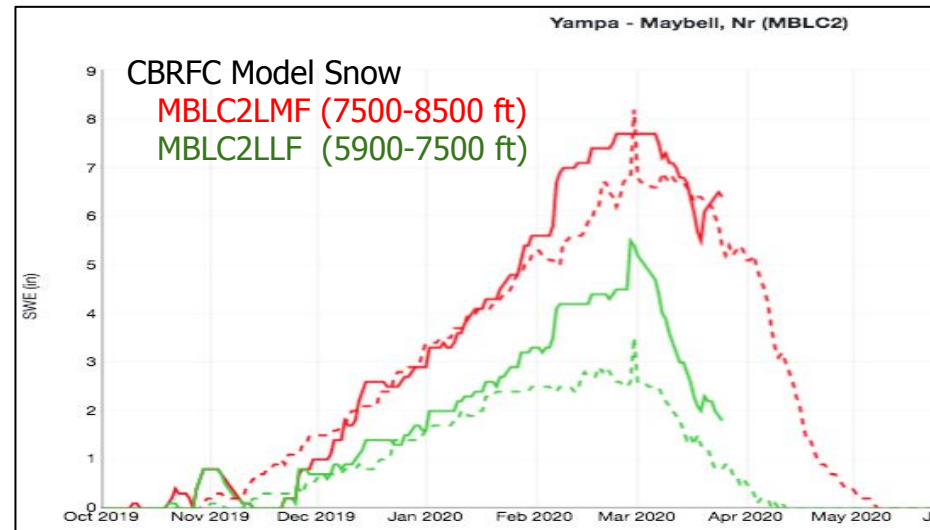
Temperatures were generally near to below normal through February this water year, with the exception of November.

March Temperatures

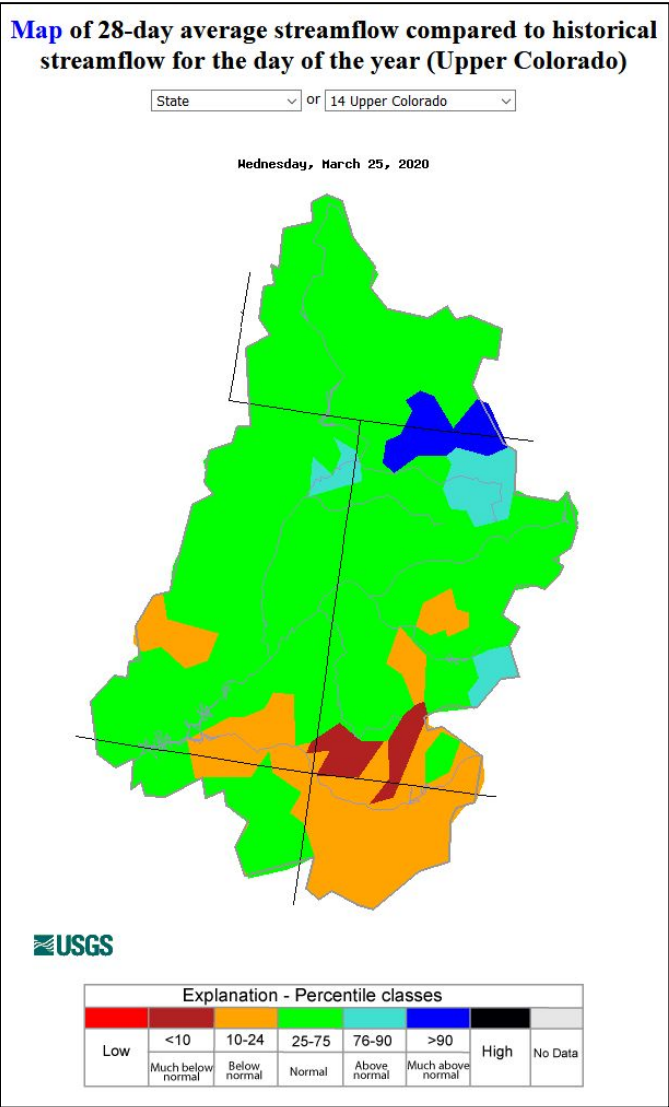
~2-4 degrees above average in western Colorado so far this month.



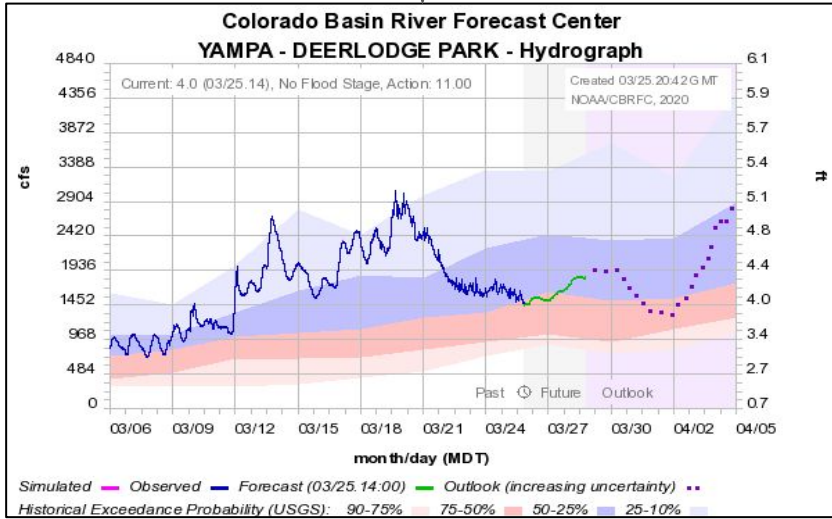
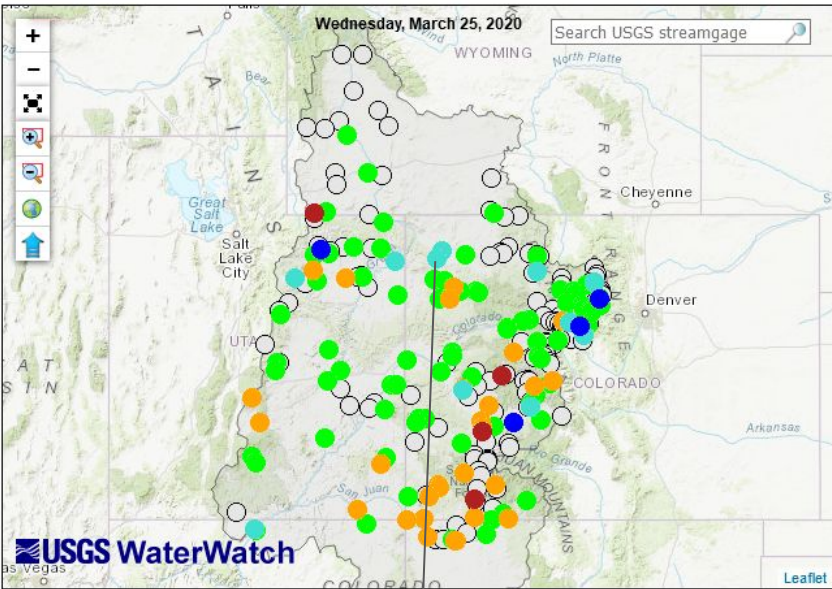
Have begun to see some snowmelt in lower elevations, but not anything too extreme or out of the ordinary.



March Streamflow

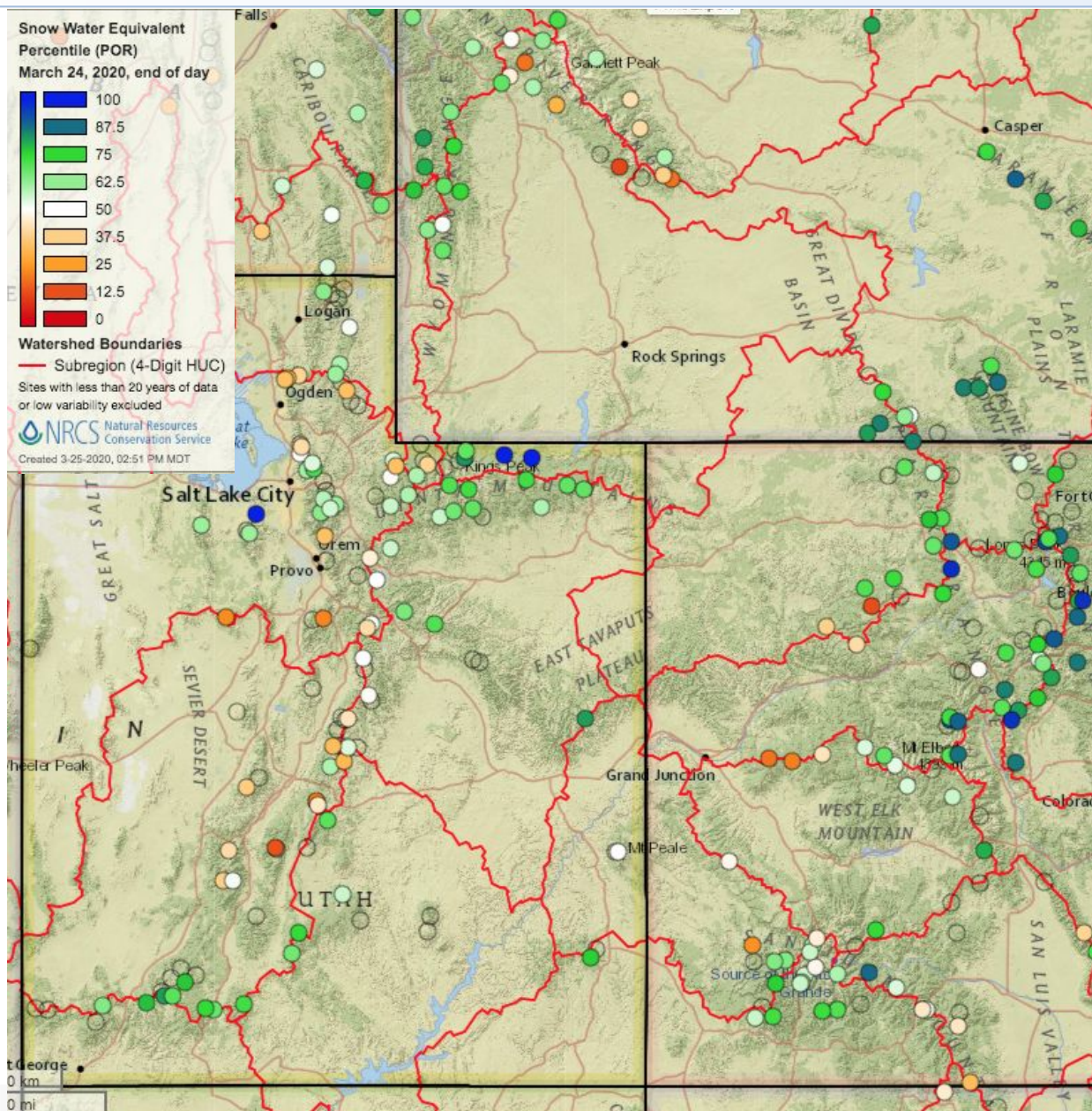


Map of 7-day average streamflow compared to historical streamflow for the day of the year



Snow Conditions: SNOTEL

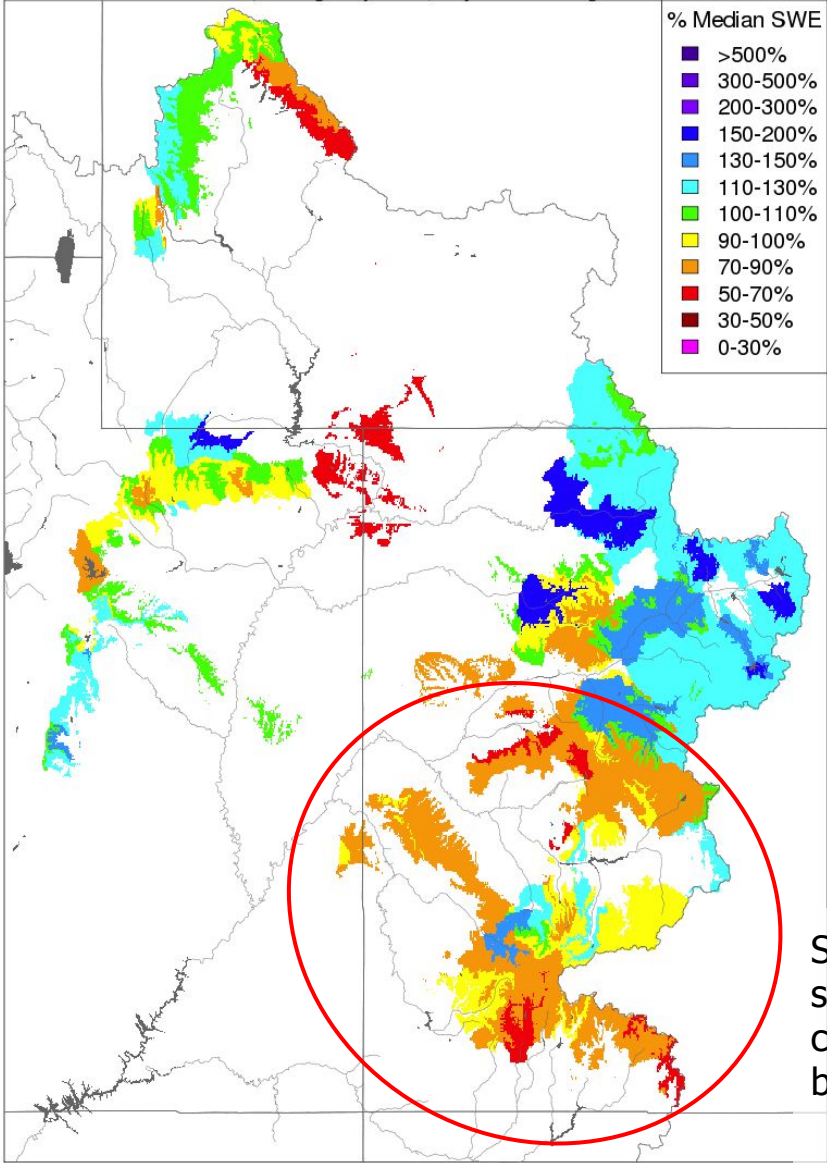
Most SNOTEL sites are in the upper half of their percentile ranking - generally near to slightly above median.



Snow Conditions: CBRFC Model Snow

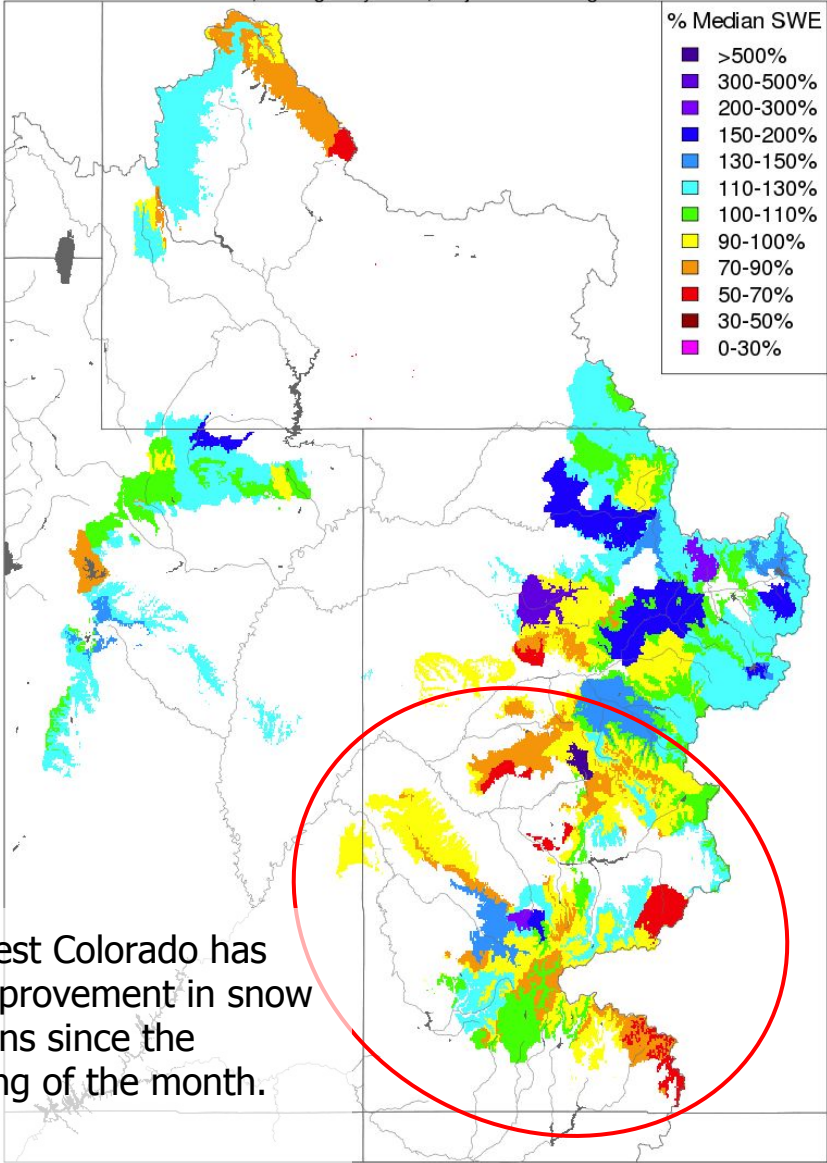
Snow Conditions - March 01 2020

Modeled, Averaged by Basin, Major Contributing Areas



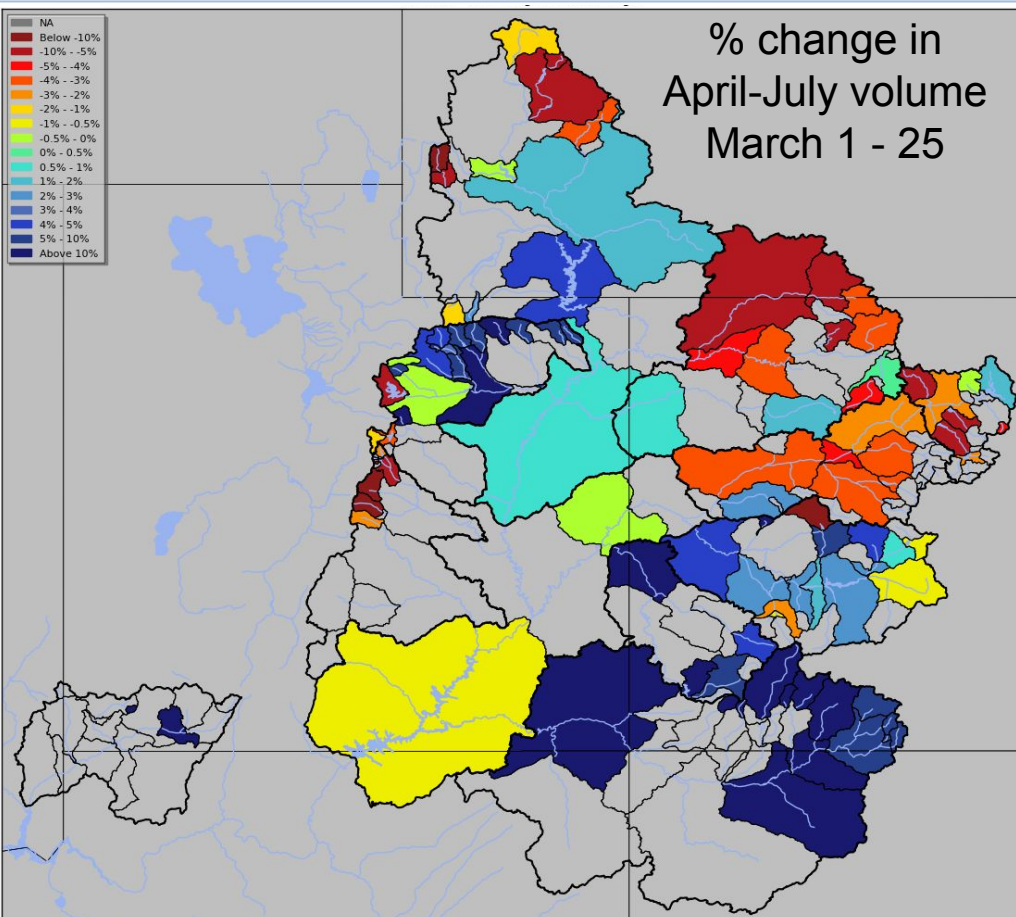
Snow Conditions - March 25 2020

Modeled, Averaged by Basin, Major Contributing Areas



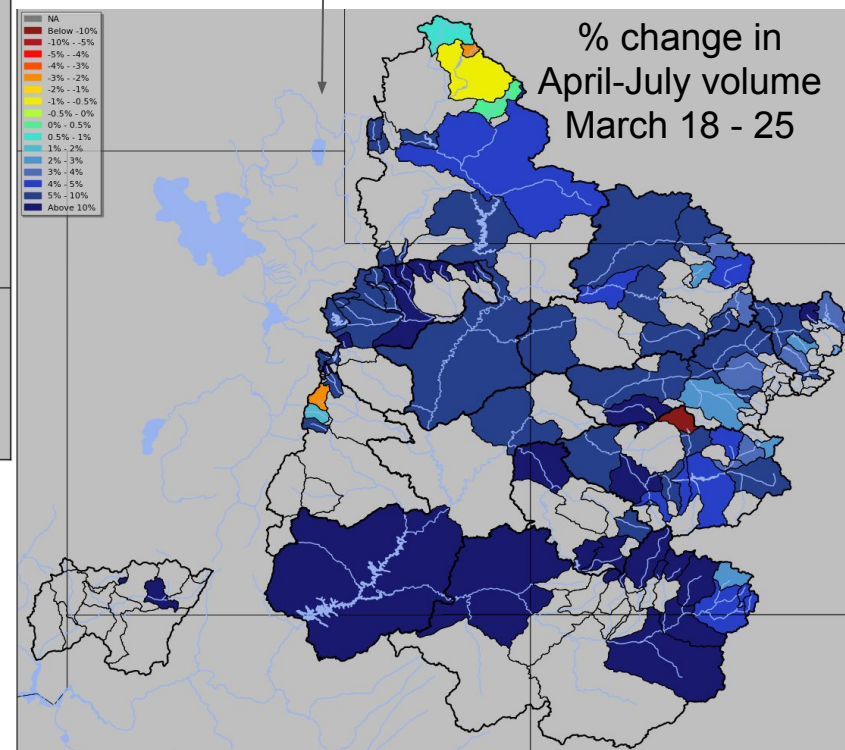
Southwest Colorado has seen improvement in snow conditions since the beginning of the month.

Trend in Raw Model Guidance



Does not mean official forecasts will increase/decrease this much. Official forecasts include basin forecaster discretion/knowledge.

Basin-wide positive trends in model guidance over the last week.

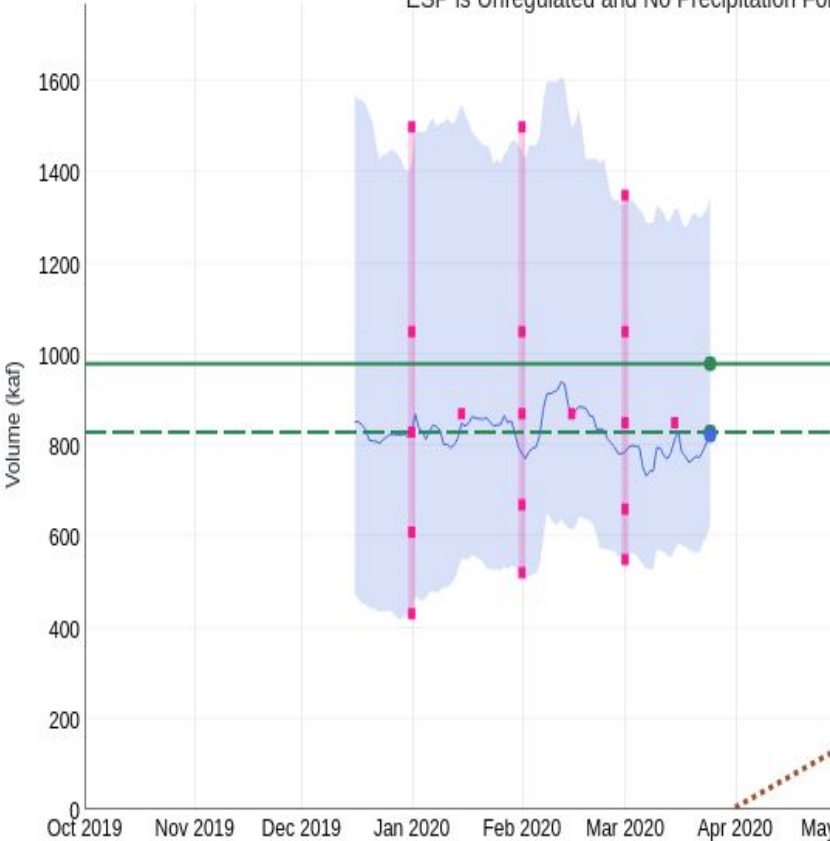


Forecast Evolution Plot – Flaming Gorge Inflow

Green - Flaming Gorge Reservoir (GRNU1)

Period: Apr-Jul, Official 50% Forecast (2020-03-15): 850 kaf (87% Average, 102% Median)

ESP is Unregulated and No Precipitation Forecast Included



2020/03/25:

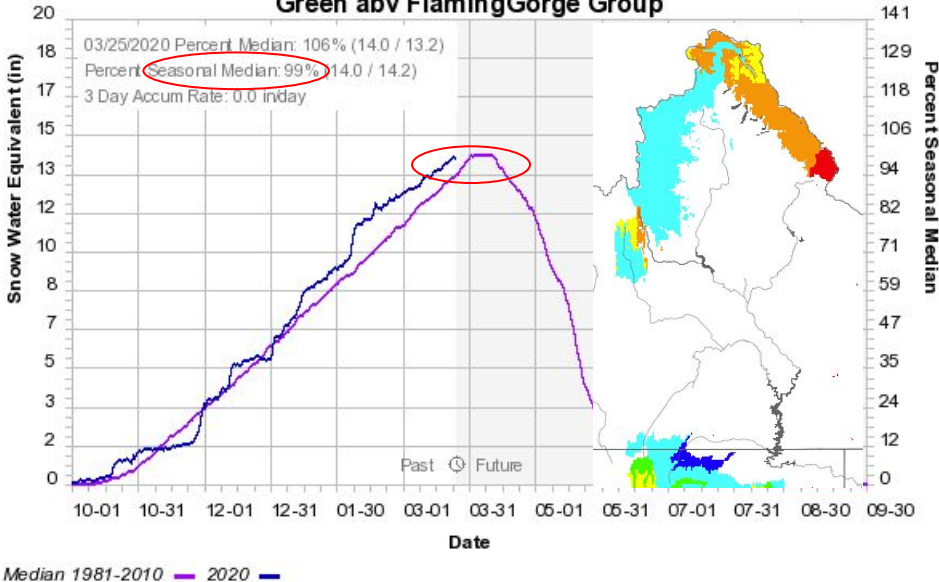
Average: 980

Median: 830

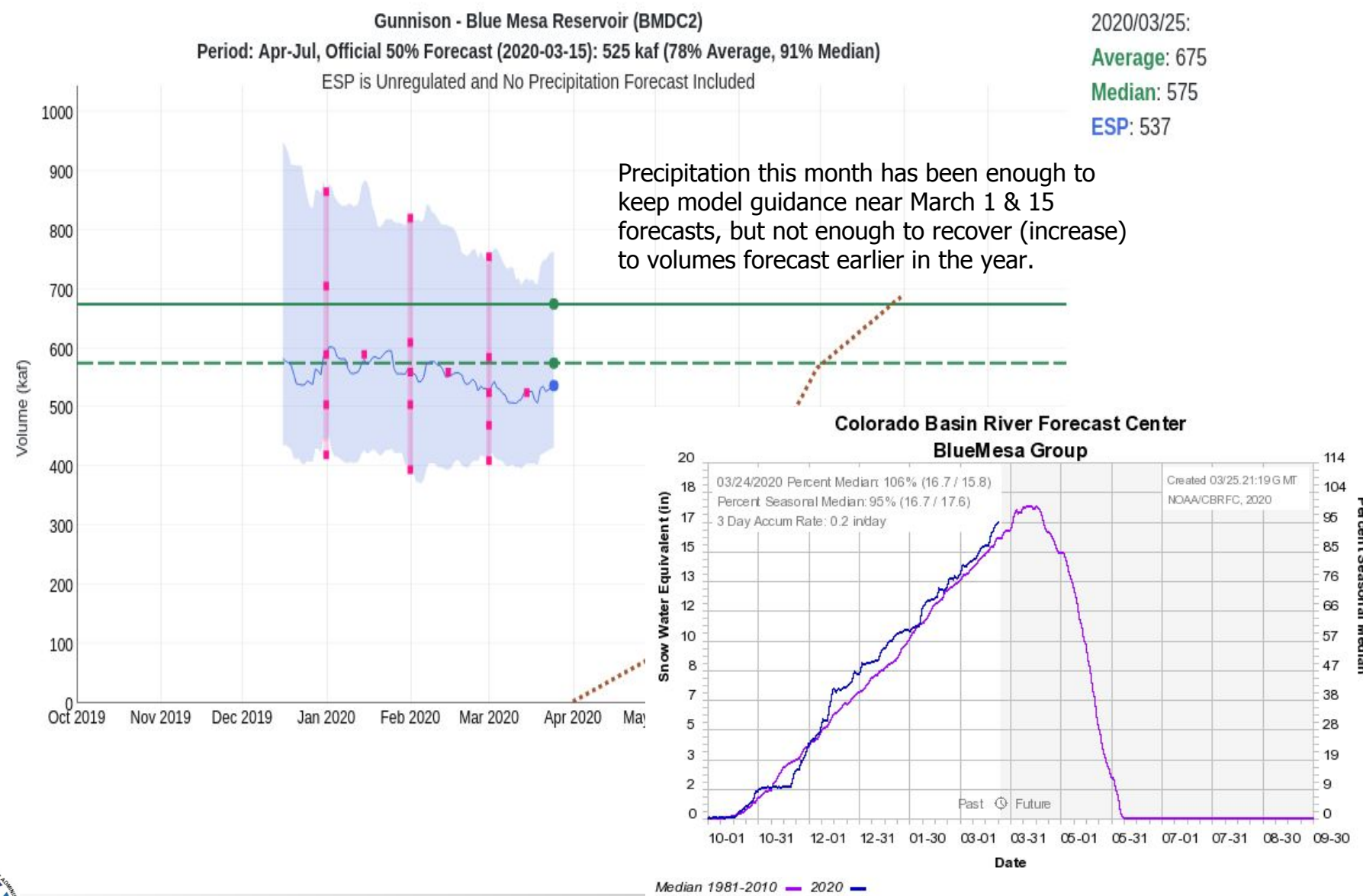
ESP: 823

Snow conditions near average as a whole, but not evenly distributed. Wind River Range is an important runoff source and snowpack is below normal in that area.

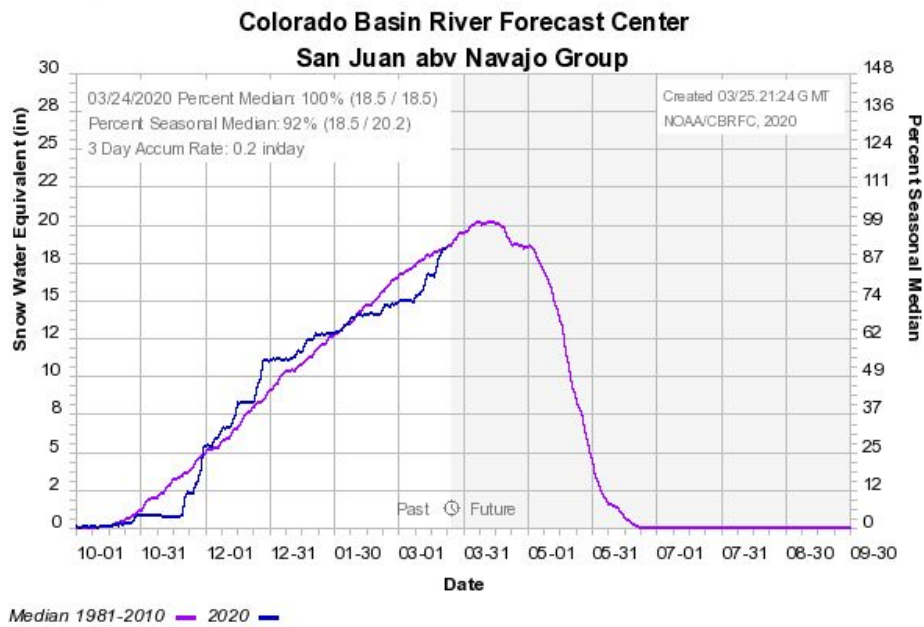
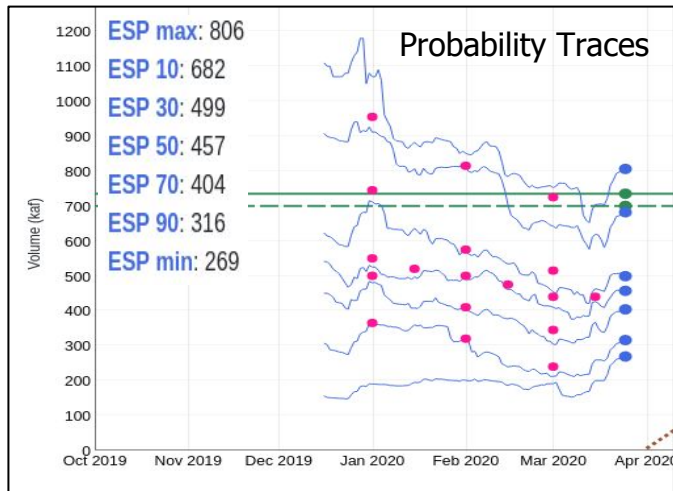
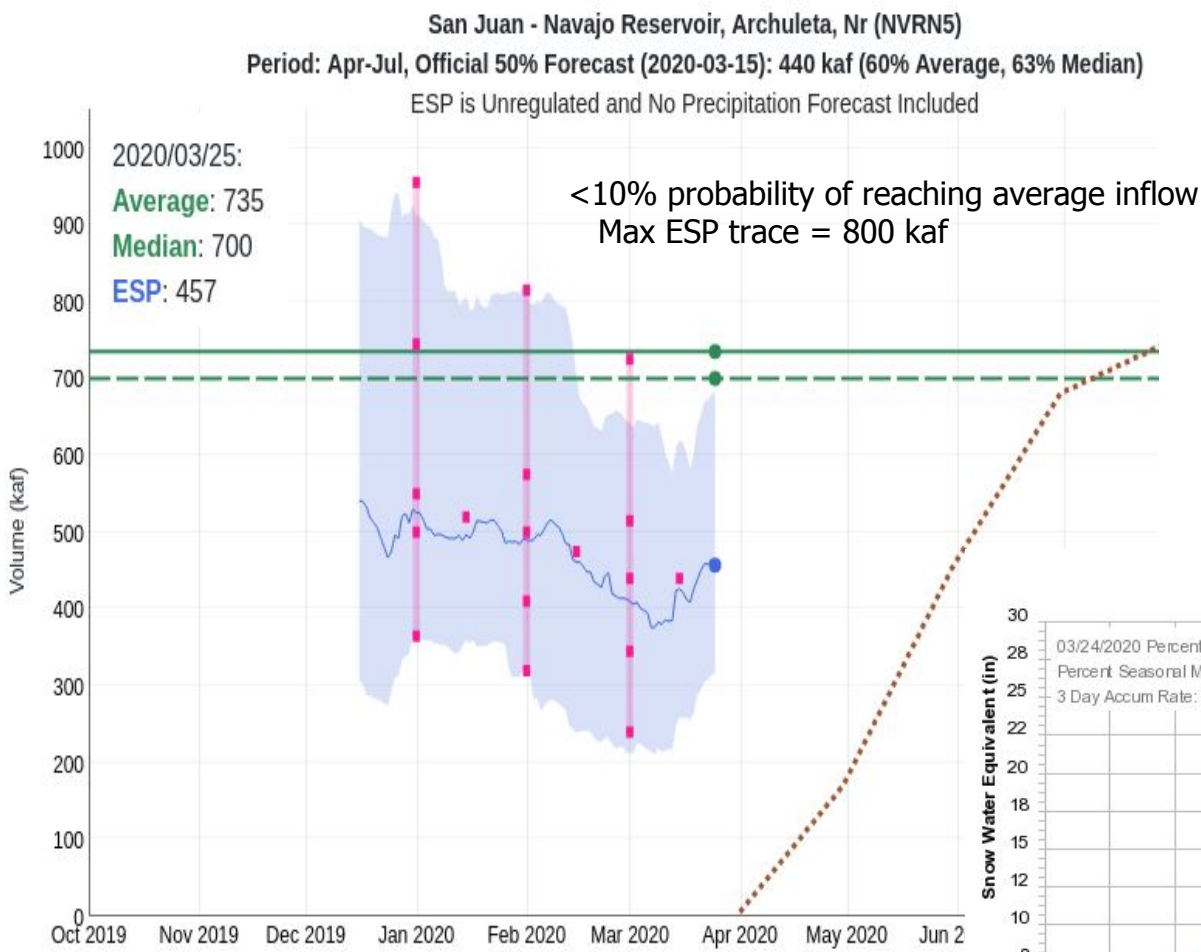
Colorado Basin River Forecast Center
Green abv FlamingGorge Group



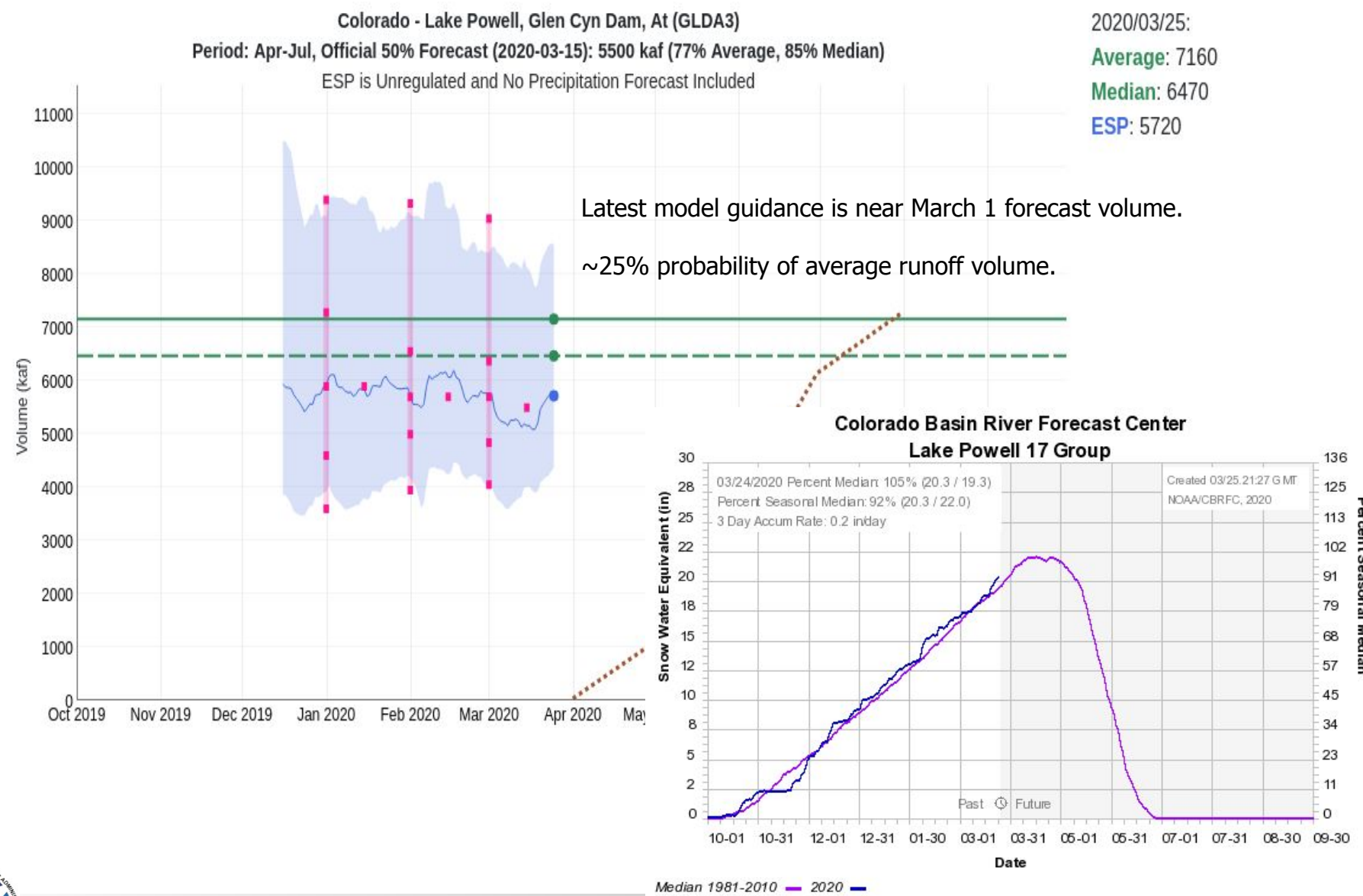
Forecast Evolution Plot – Blue Mesa Inflow



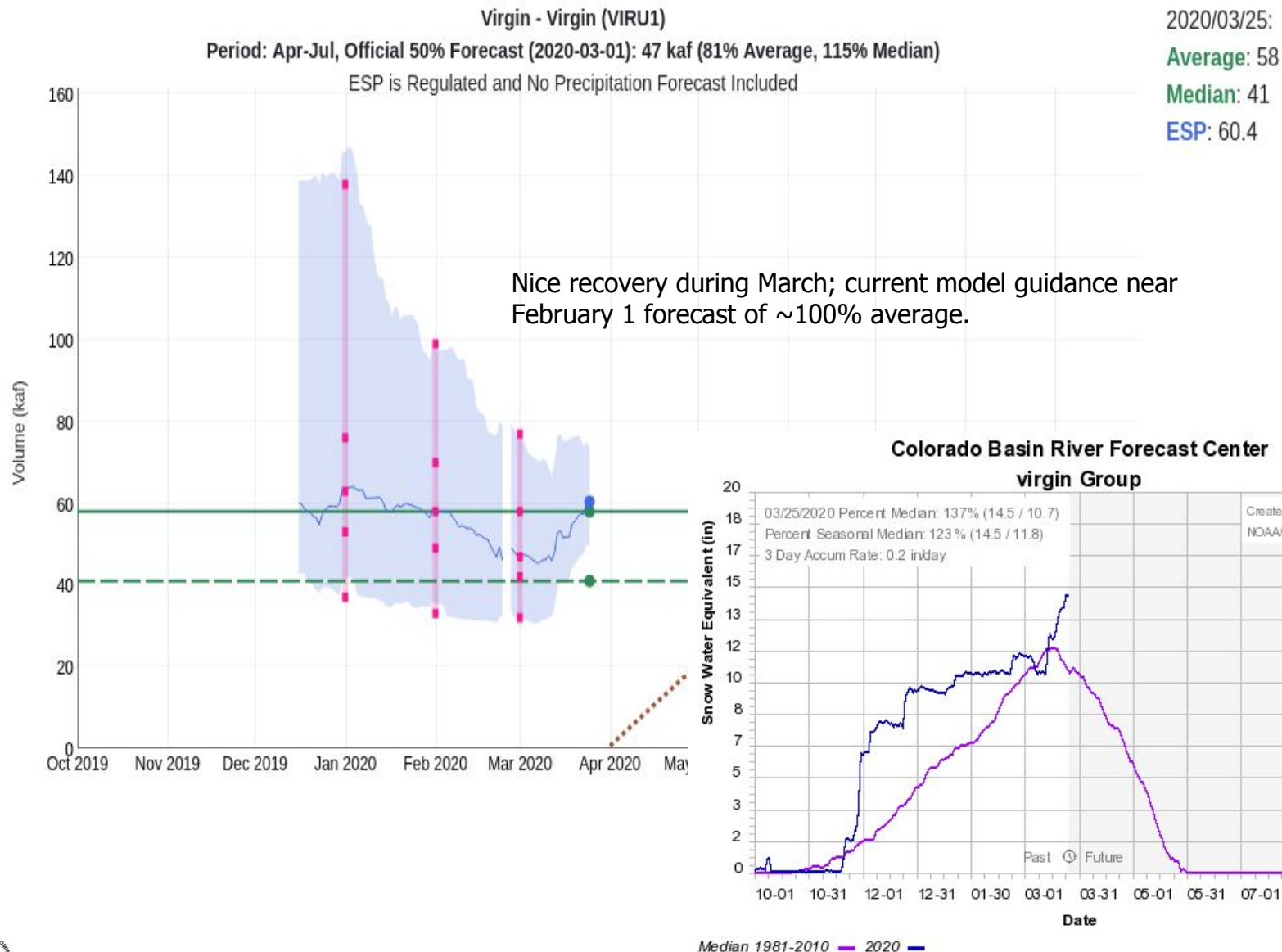
Forecast Evolution Plot – Navajo Inflow



Forecast Evolution Plot – Lake Powell

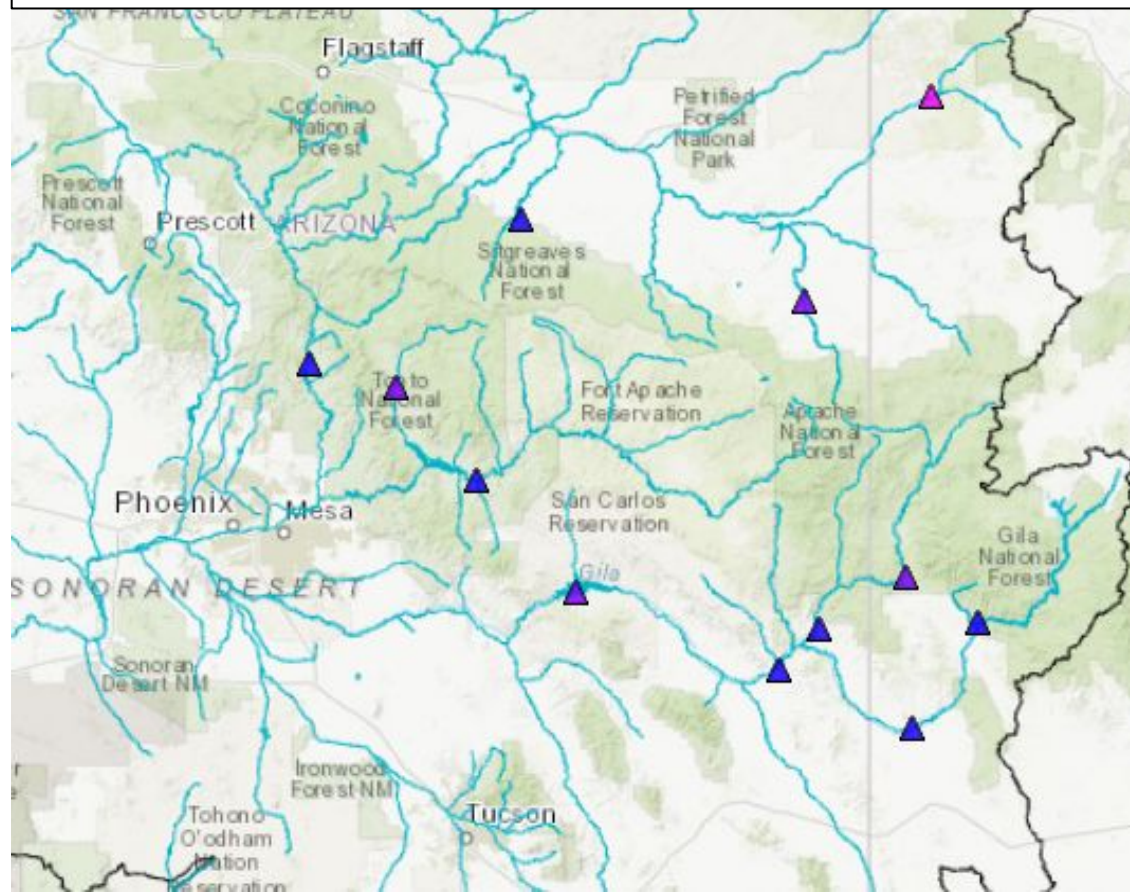


Forecast Evolution Plot – Virgin River at Virgin



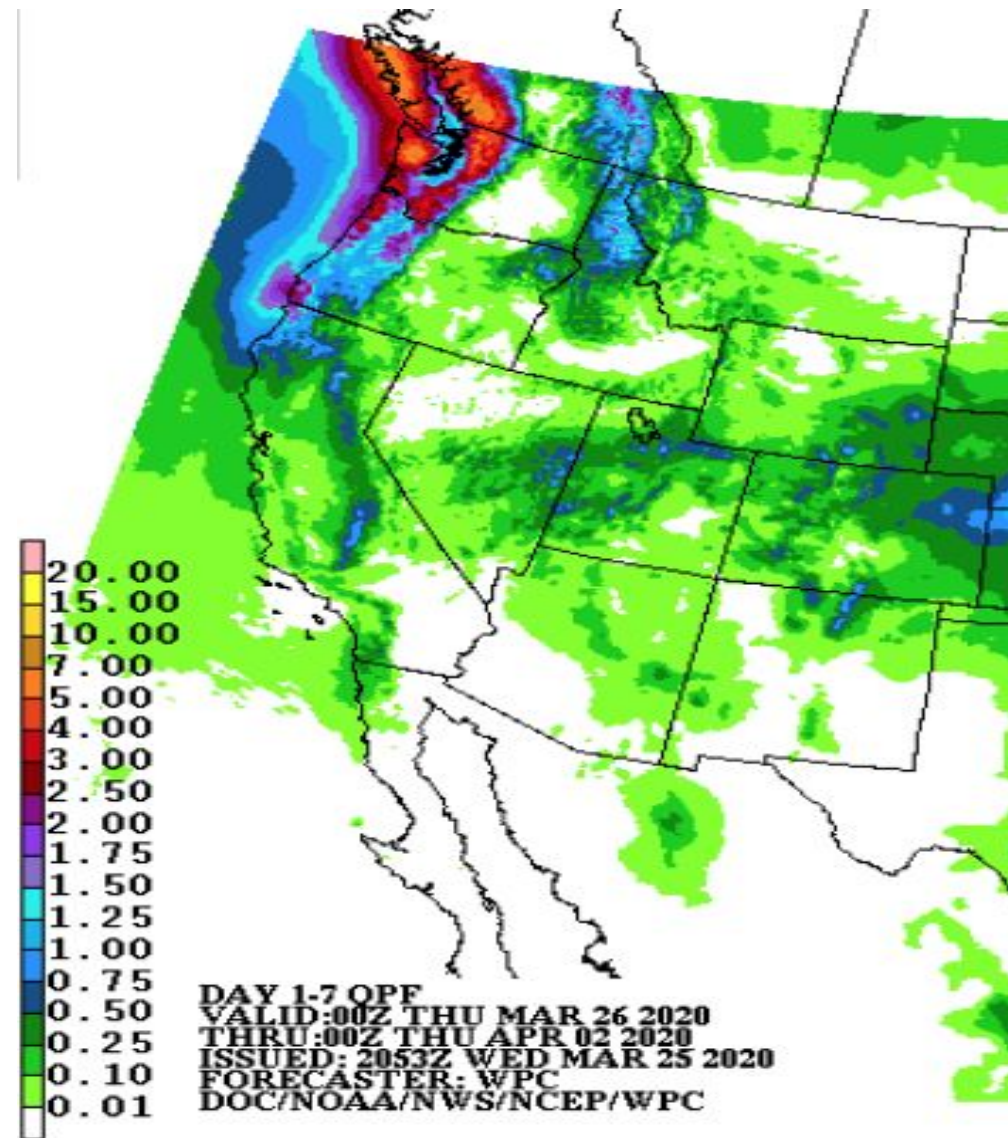
Lower Colorado River Water Supply

Gila/Salt/Verde/Little Colorado River Basins January – May Forecast Volume (Latest ESP % Median)



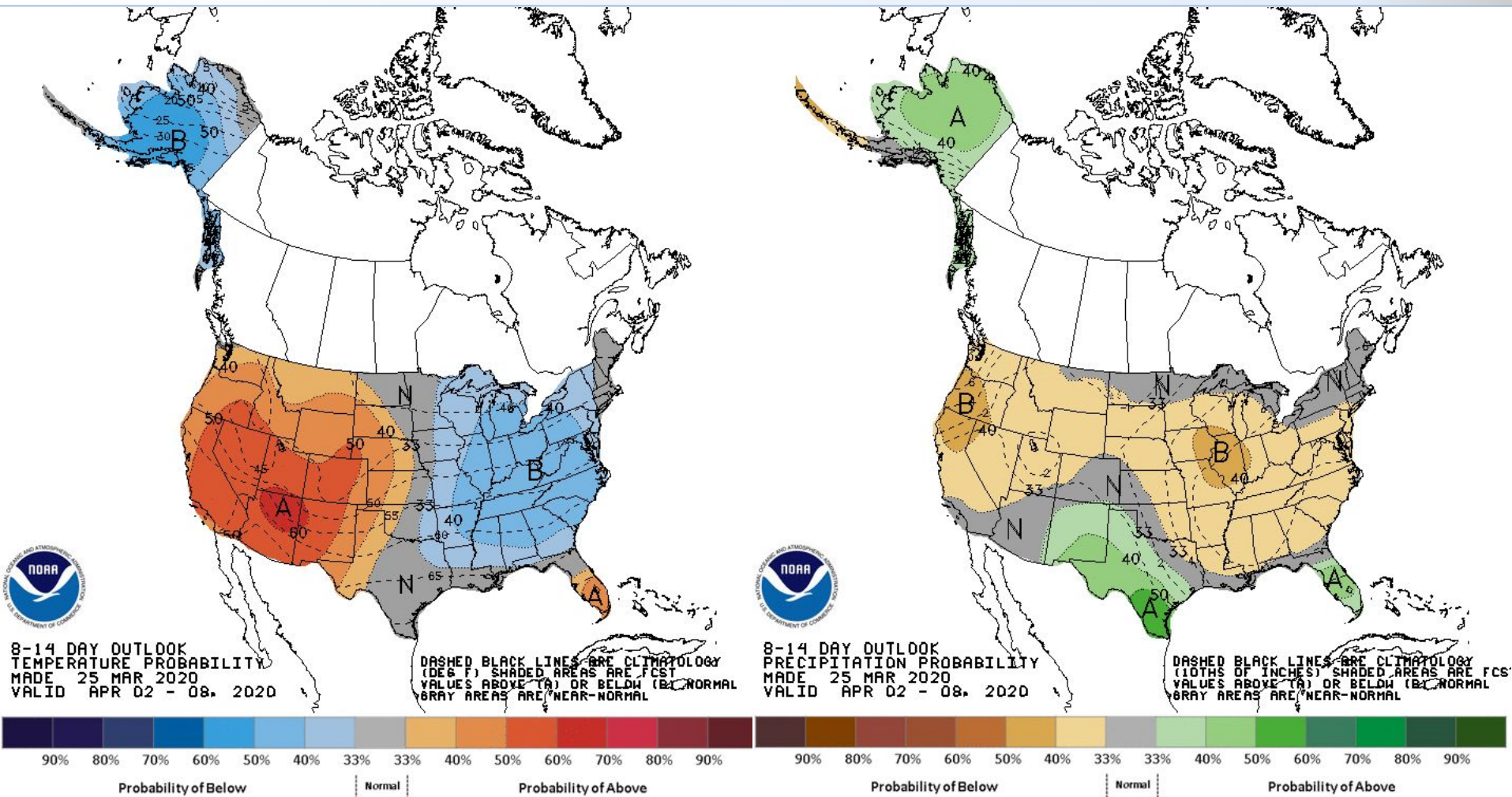
- ▲ < 30%
- ▲ 30-50%
- ▲ 50-70%
- ▲ 70-90%
- ▲ 90-100%
- ▲ 100-110%
- ▲ 110-130%
- ▲ 130-150%
- ▲ 150-200%
- ▲ 200-300%
- ▲ 300-500%
- ▲ >500%
- ▲ Regulated
- △ No Forecast

Upcoming Weather: WPC Outlook March 26-April 2



- A persistent trough over the Great Basin will bring occasional precipitation and colder temperatures to northern Utah and Wyoming through Thursday.
- This storm system will then move eastward into Colorado by Friday.
- Drier conditions are expected across the basin Saturday through at least Thursday of next week.

Upcoming Weather: 8-14 day outlook (April 2-8)

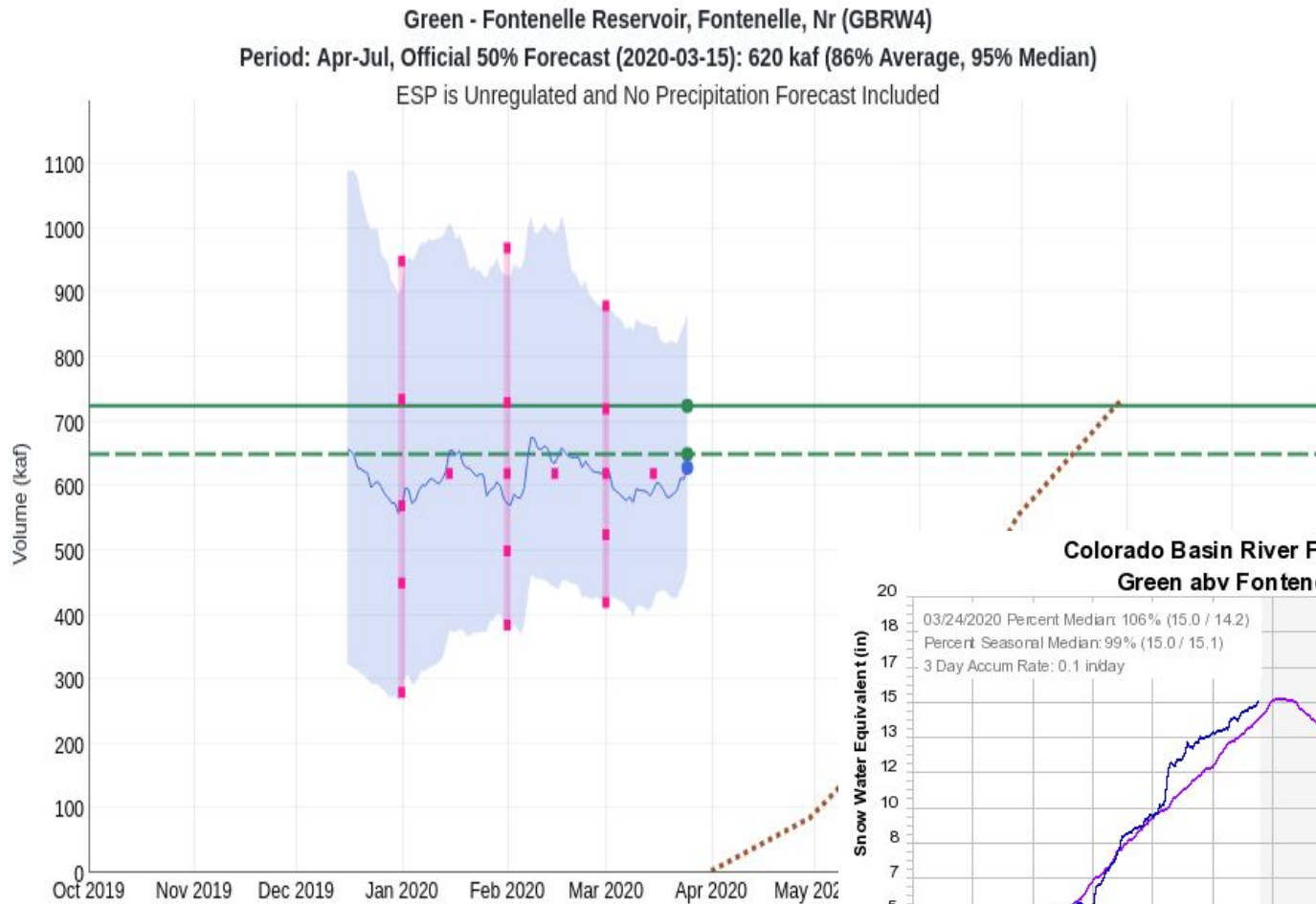


Weather models suggest ridging returns to Intermountain West for next week. Above normal temperatures and below normal precipitation is favored under this pattern.

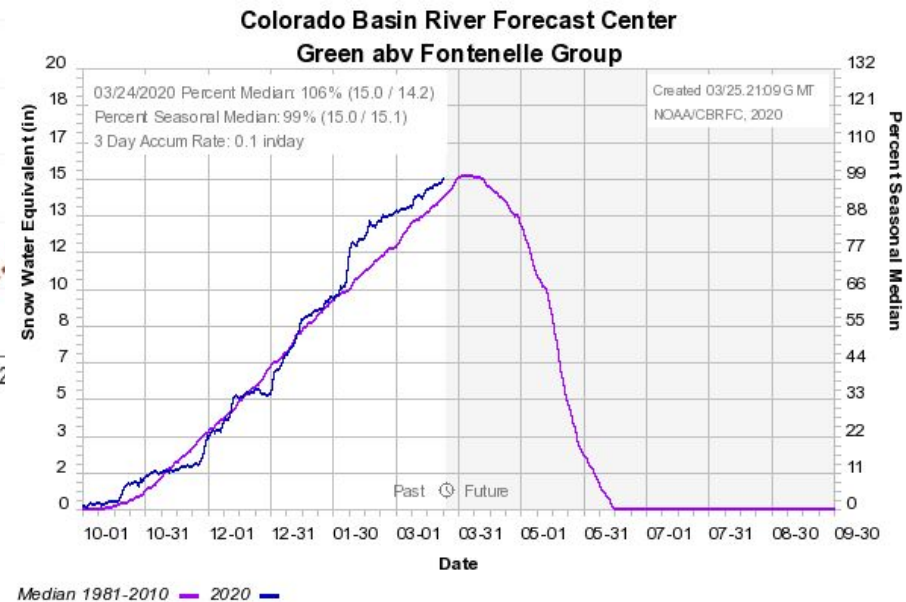
Summary

- Most April 1 Upper Colorado reservoir forecasts will likely be similar to March 1 forecasts
 - Some small adjustments, but don't expect huge changes.
- Could see some bigger increases in Lower Colorado (Virgin, AZ) forecasts
- First week of April looks to be warm and dry right now.
 - This could factor into forecaster decisions.

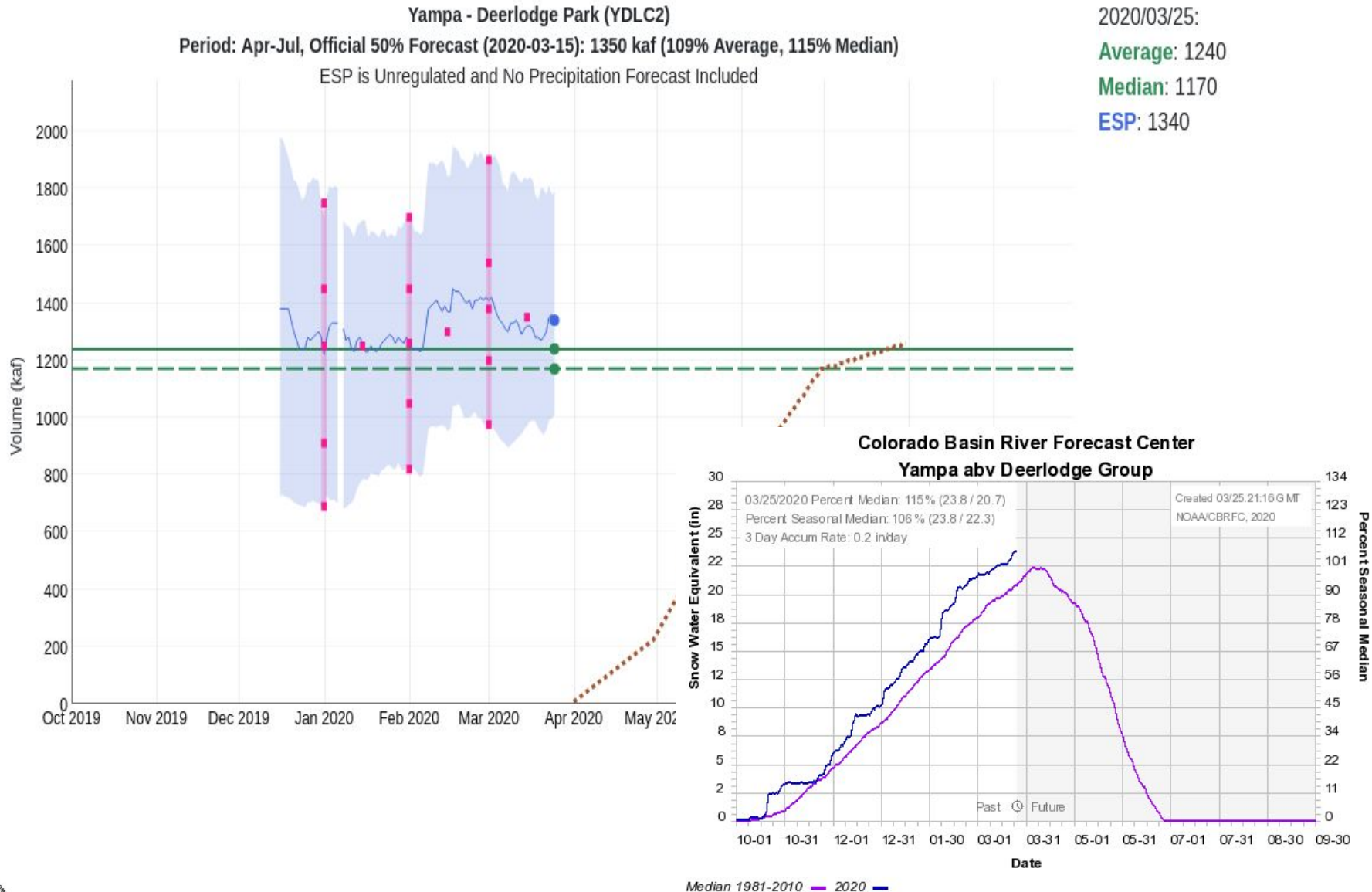
Forecast Evolution Plot – Fontenelle Inflow



2020/03/25:
Average: 725
Median: 650
ESP: 629



Forecast Evolution Plot – Yampa at Deerlodge



Forecast Evolution Plot – McPhee Inflow

