

Current Conditions and Forecasts

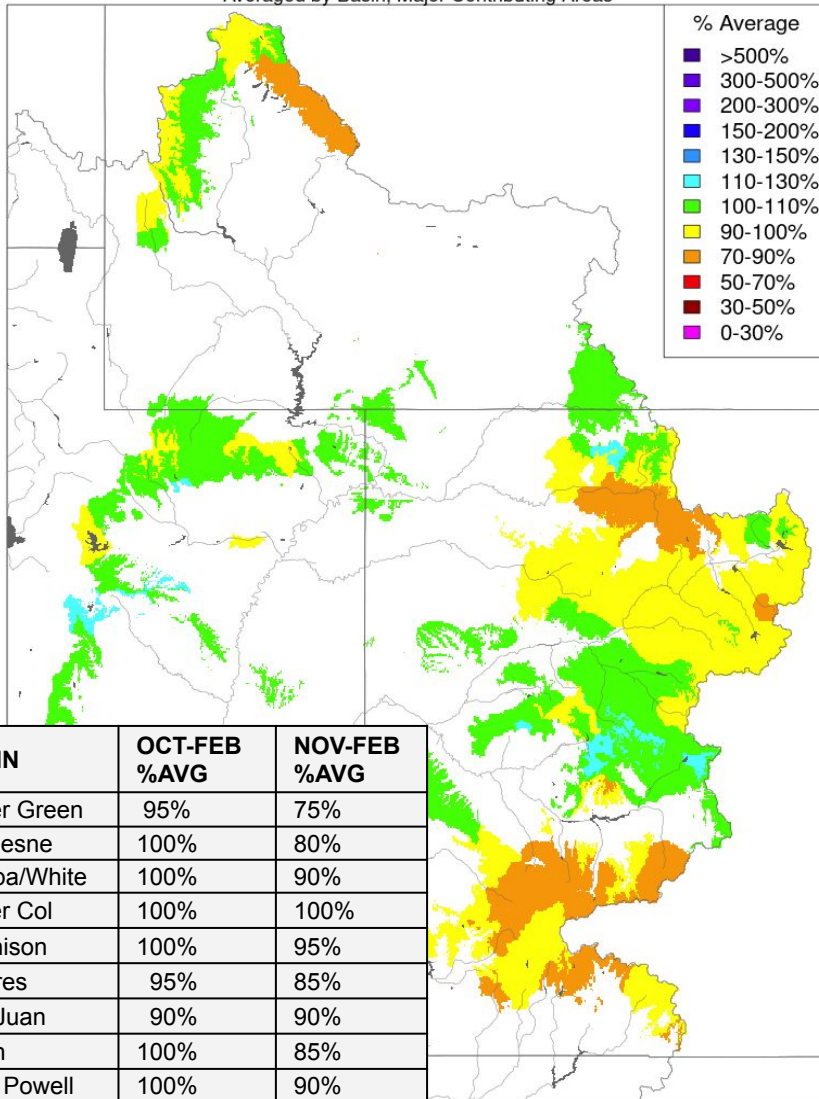
CRFS March 24, 2022

Water Year Precipitation: Oct-Feb

Upper Colorado

Water Year Precipitation, October 2021 - February 2022

Averaged by Basin, Major Contributing Areas

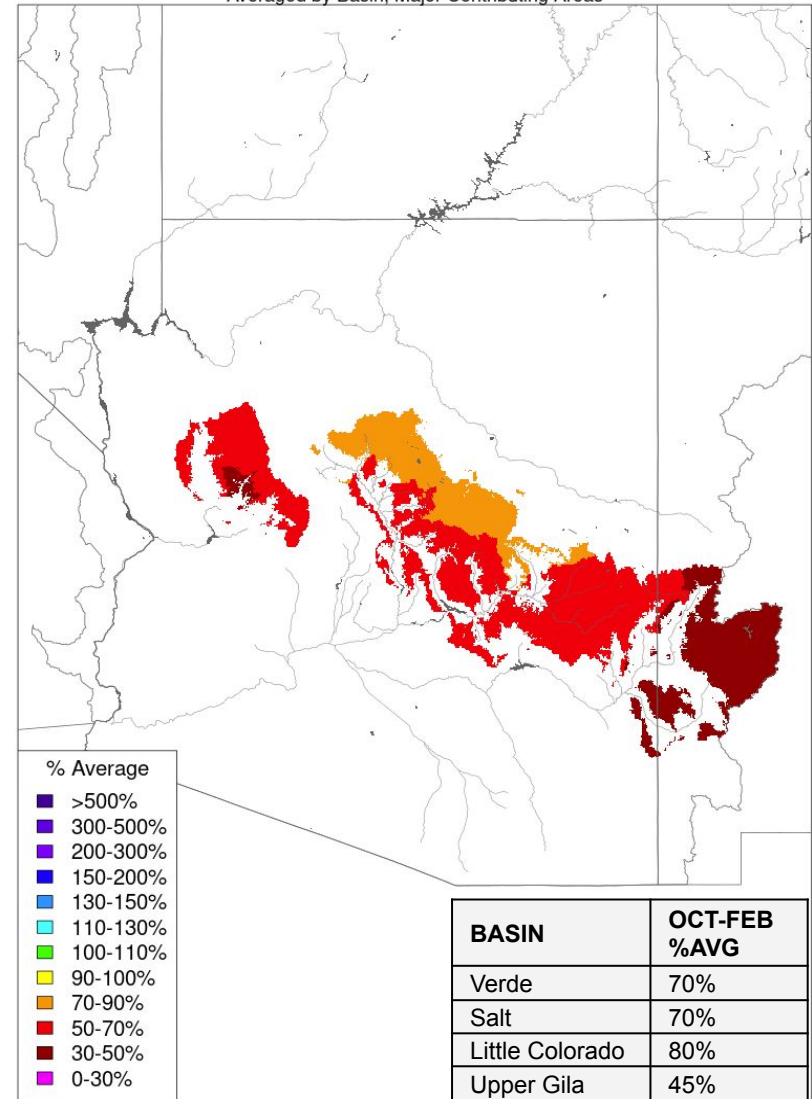


Prepared by NOAA, Colorado Basin River Forecast Center
Salt Lake City, Utah, www.cbrfc.noaa.gov

Lower Colorado

Water Year Precipitation, October 2021 - February 2022

Averaged by Basin, Major Contributing Areas

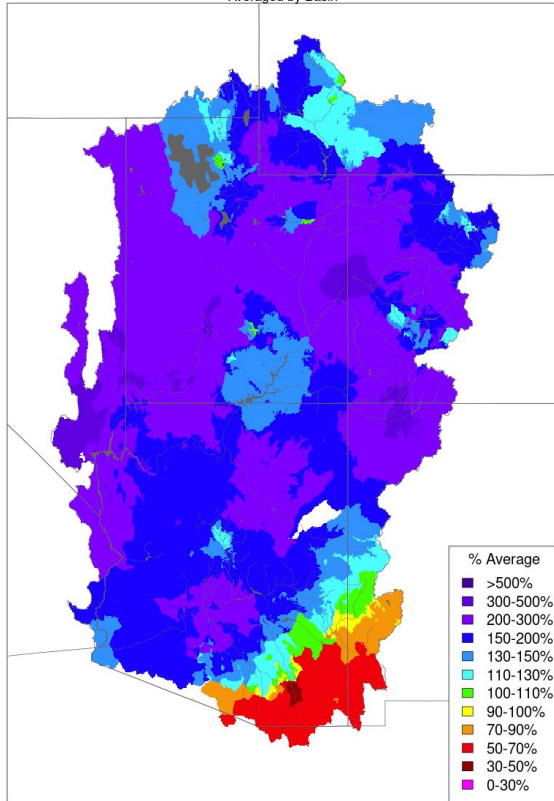


Prepared by NOAA, Colorado Basin River Forecast Center
Salt Lake City, Utah, www.cbrfc.noaa.gov

Winter Precipitation: Dec-Feb

Monthly Precipitation - December 2021

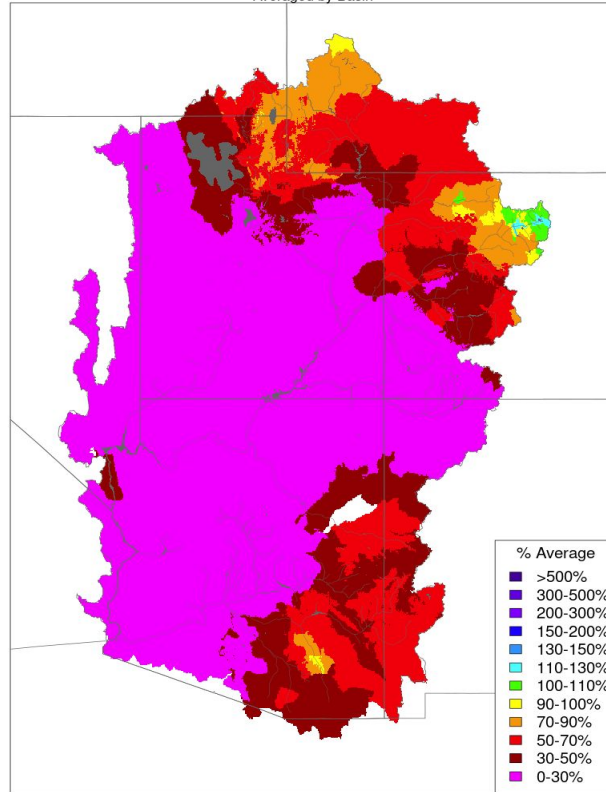
Averaged by Basin



Prepared by NOAA, Colorado Basin River Forecast Center
Salt Lake City, Utah, www.cbrfc.noaa.gov

Monthly Precipitation - January 2022

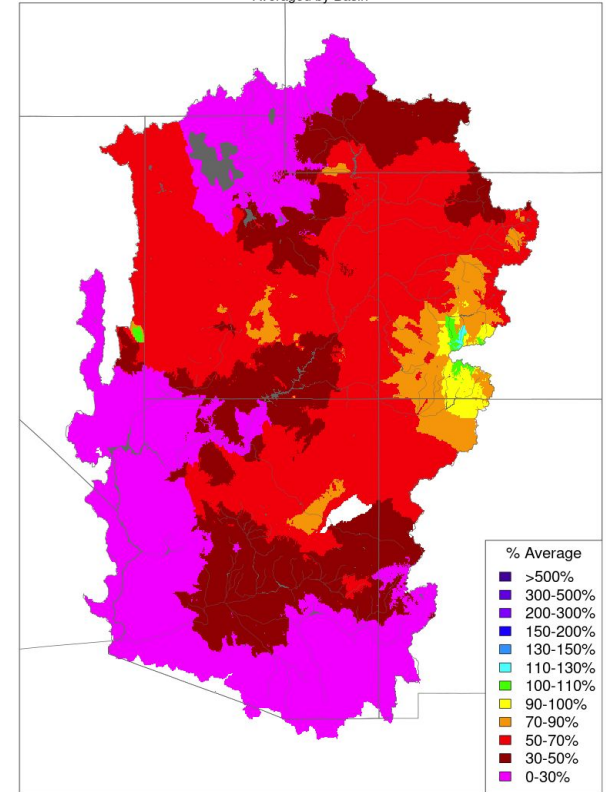
Averaged by Basin



Prepared by NOAA, Colorado Basin River Forecast Center
Salt Lake City, Utah, www.cbrfc.noaa.gov

Monthly Precipitation - February 2022

Averaged by Basin

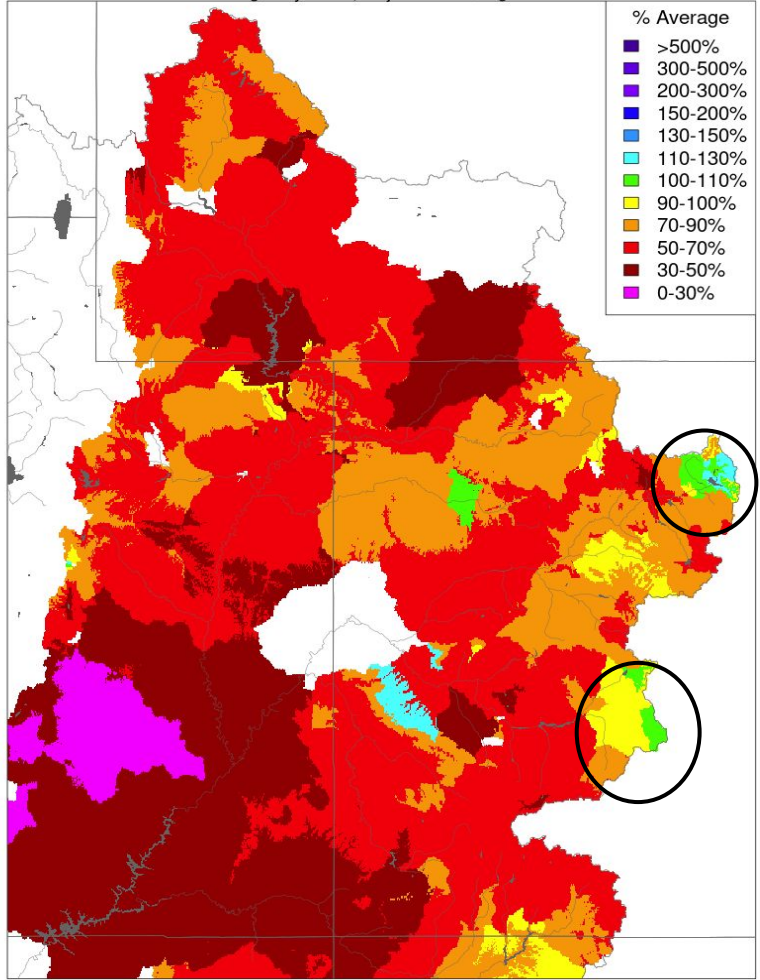


Prepared by NOAA, Colorado Basin River Forecast Center
Salt Lake City, Utah, www.cbrfc.noaa.gov

March 1-23 Precipitation

Upper Colorado

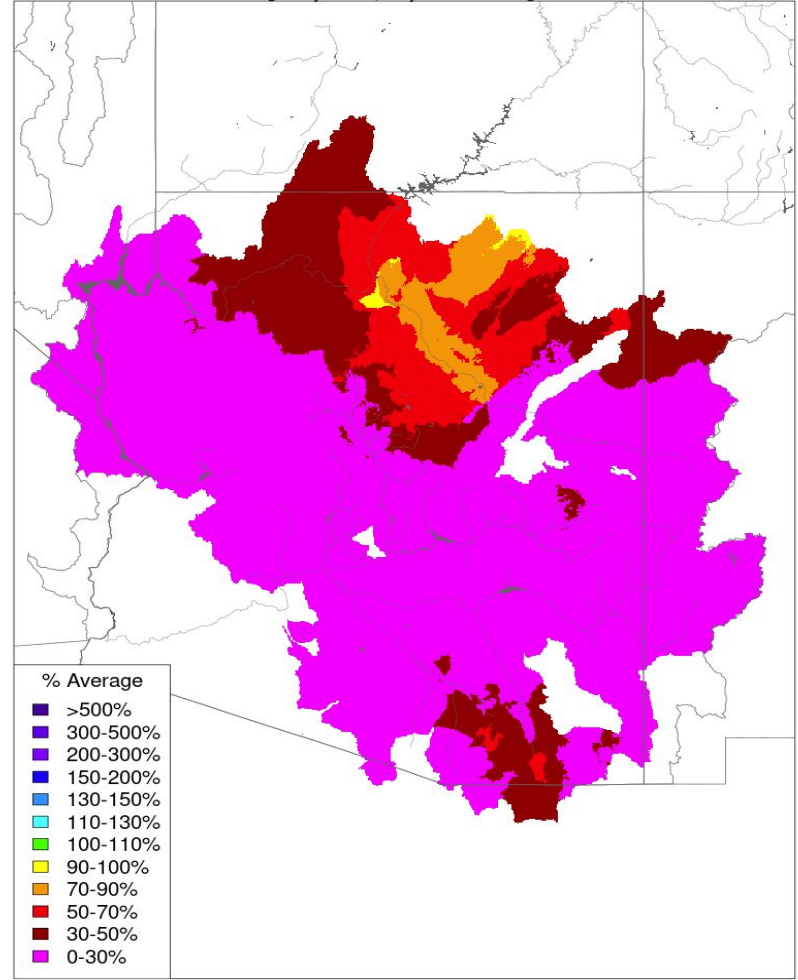
Month to Date Precipitation - March 23 2022
Averaged by Basin, Major Contributing Areas



Prepared by NOAA, Colorado Basin River Forecast Center
Salt Lake City, Utah, www.cbrfc.noaa.gov

Lower Colorado

Month to Date Precipitation - March 23 2022
Averaged by Basin, Major Contributing Areas

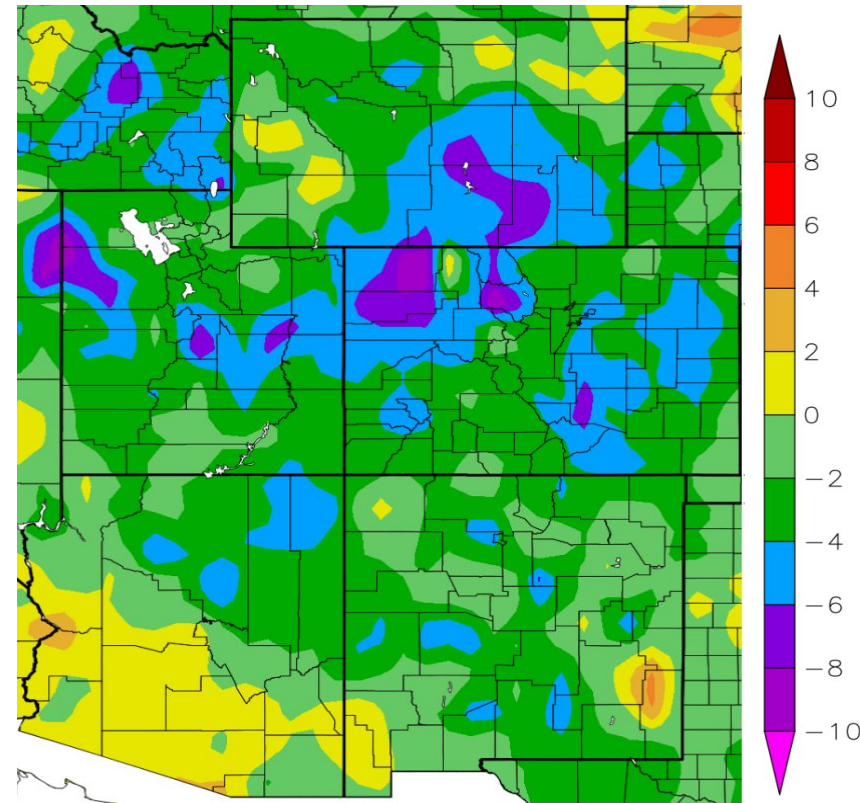


Prepared by NOAA, Colorado Basin River Forecast Center
Salt Lake City, Utah, www.cbrfc.noaa.gov

March Temperatures

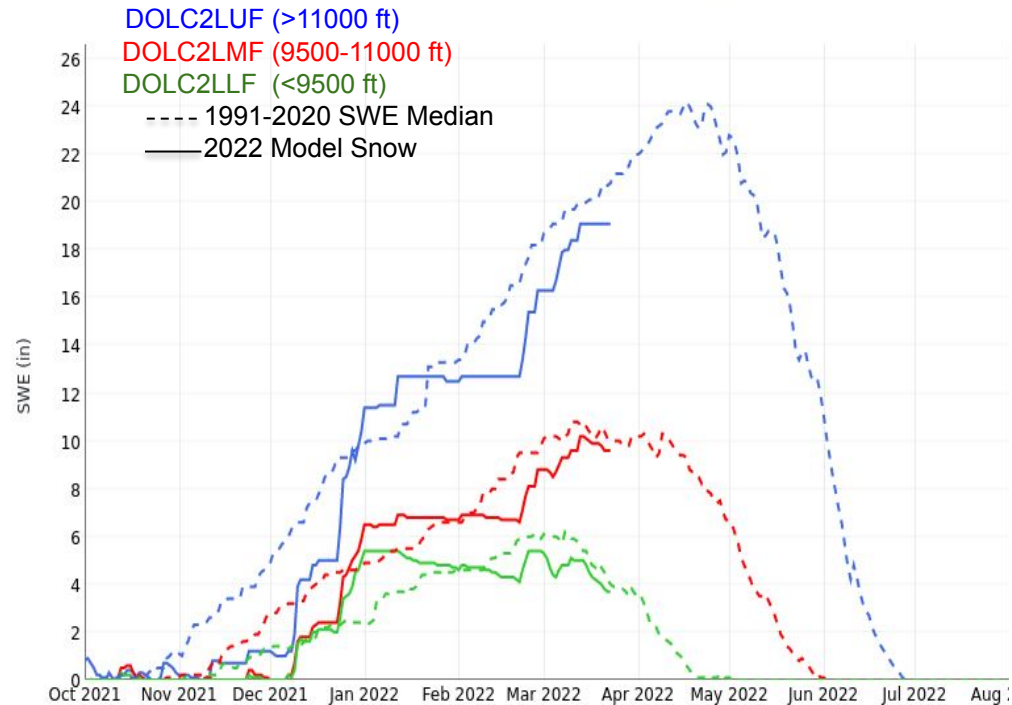
Below normal temperatures for the Upper Colorado so far this month.

Departure from Normal Average Max Temperature (F)
3/1/2022-3/22/2022



Have begun to see snowmelt in lower elevations, but not anything too extreme or out of the ordinary.

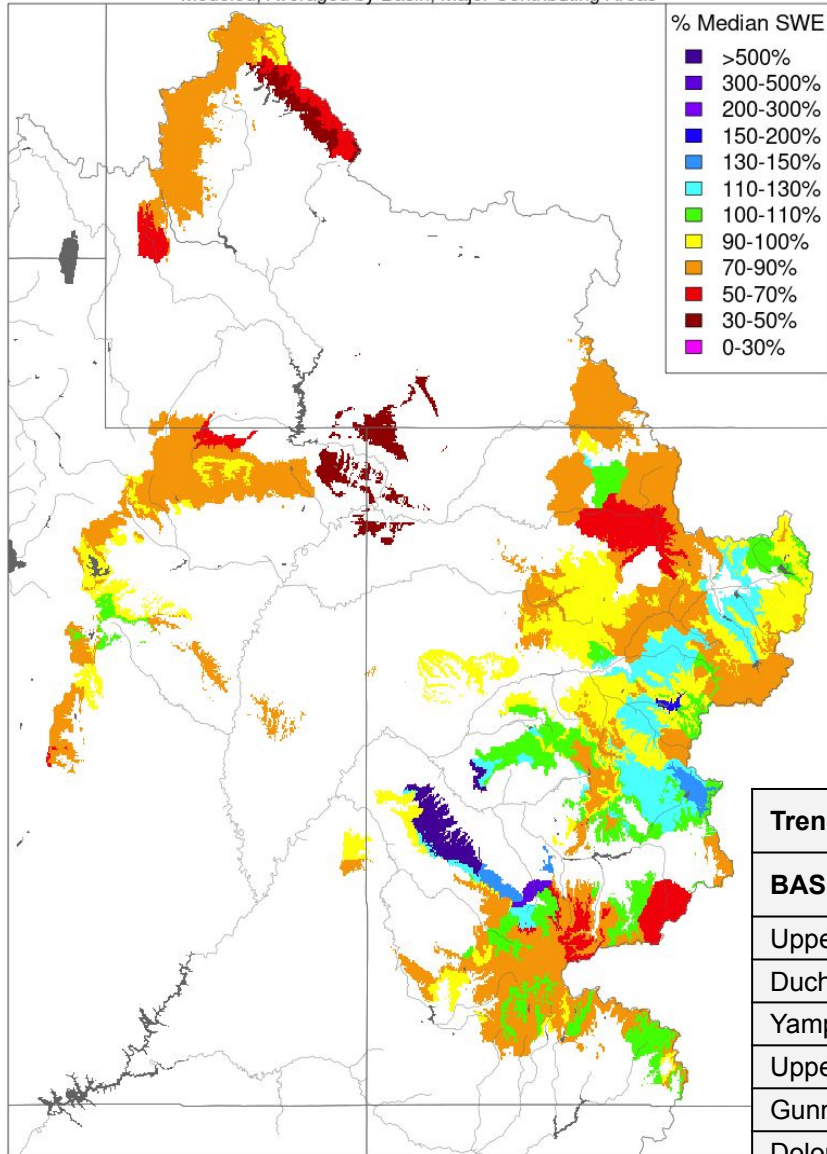
CBRFC Model Snow Dolores - Dolores (DOLC2)



Snow Conditions: CBRFC Model Snow

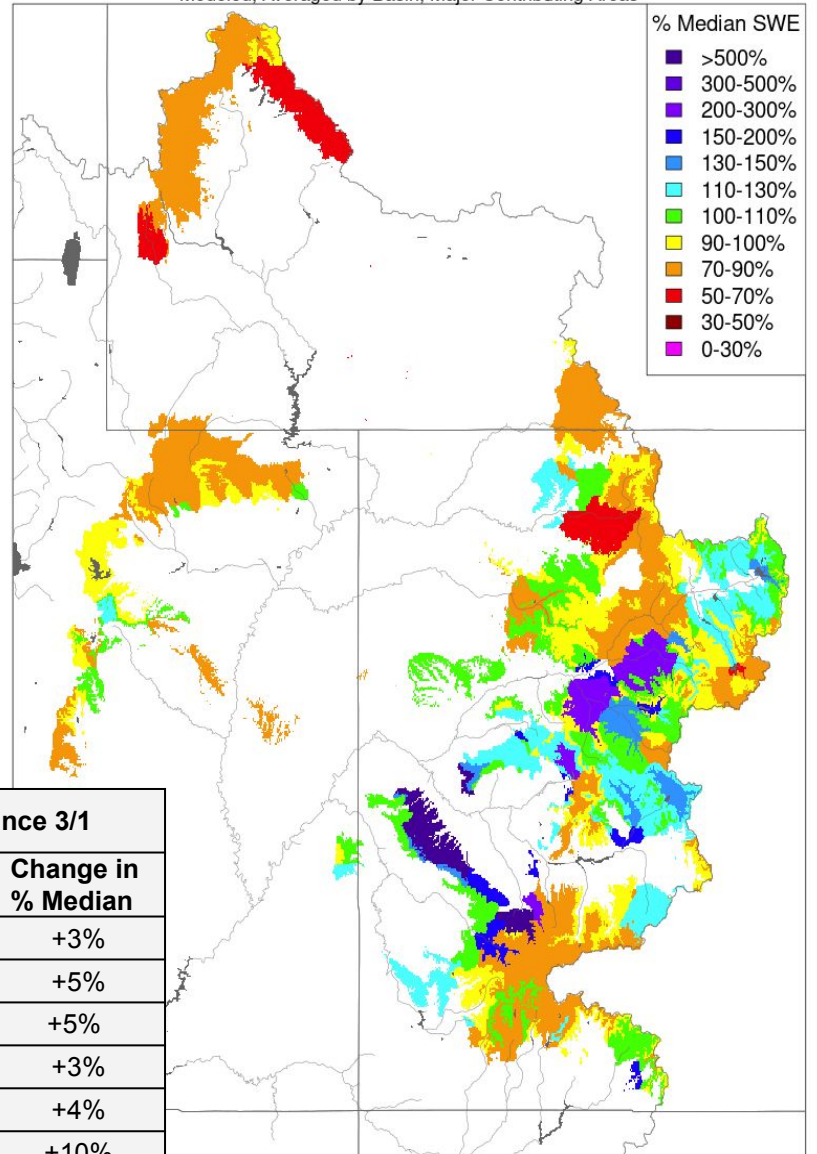
Snow Conditions - March 01 2022

Modeled, Averaged by Basin, Major Contributing Areas



Snow Conditions - March 23 2022

Modeled, Averaged by Basin, Major Contributing Areas



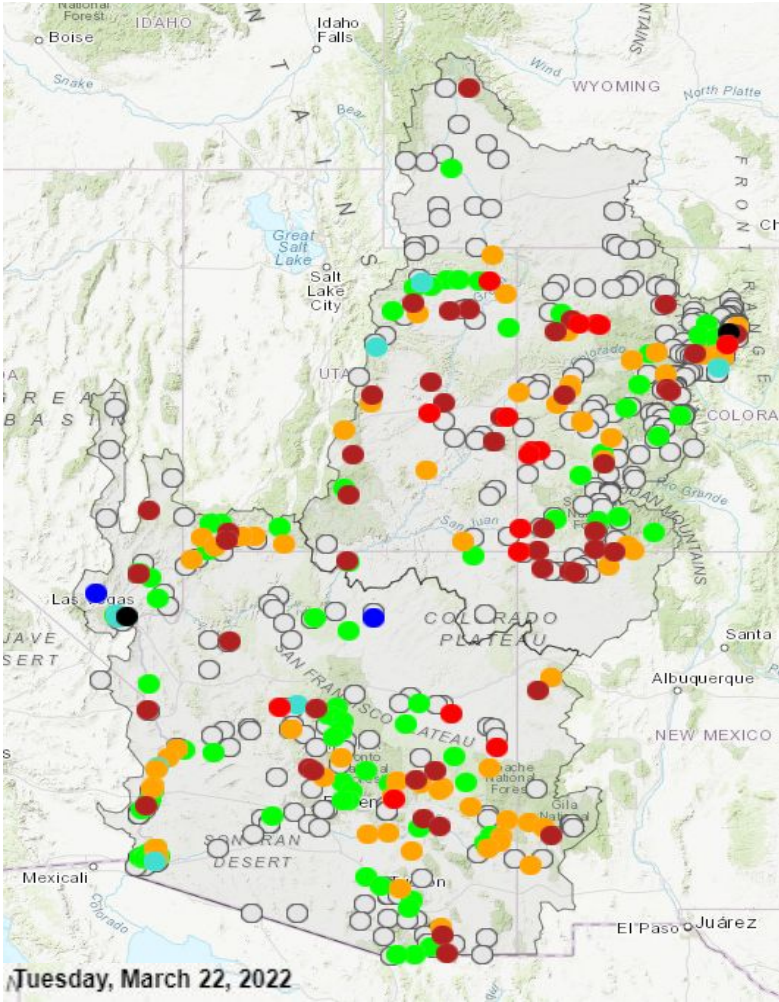
Trend in SWE since 3/1	
BASIN	Change in % Median
Upper Green	+3%
Duchesne	+5%
Yampa/White	+5%
Upper Col	+3%
Gunnison	+4%
Dolores	+10%
San Juan	+3%

Prepared by NOAA, Colorado Basin River Forecast Center
Salt Lake City, Utah, www.cbrfc.noaa.gov

Prepared by NOAA, Colorado Basin River Forecast Center
Salt Lake City, Utah, www.cbrfc.noaa.gov

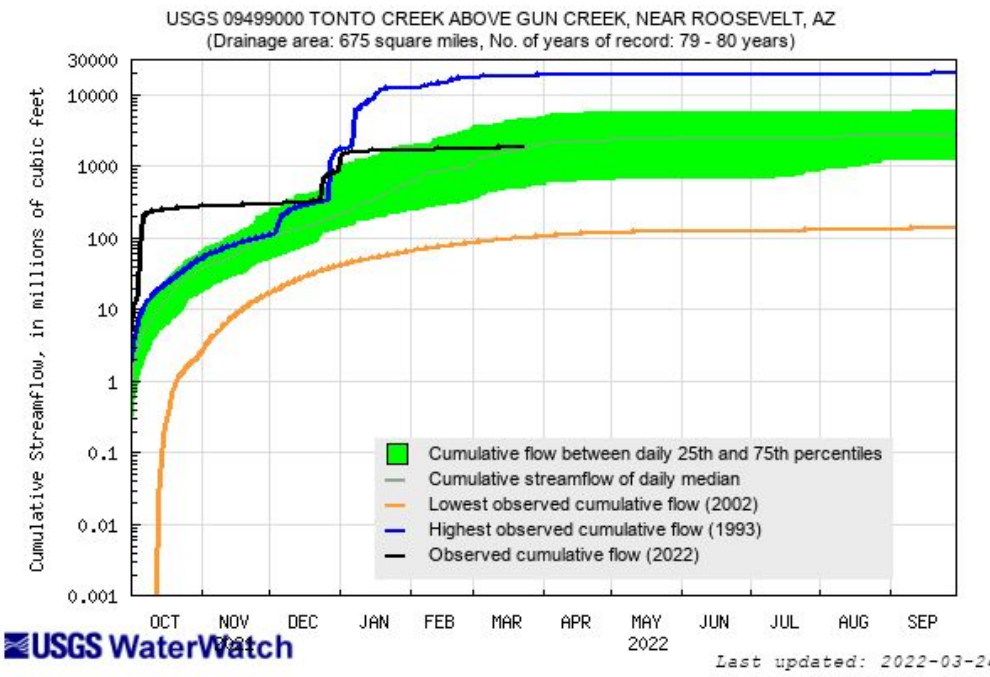
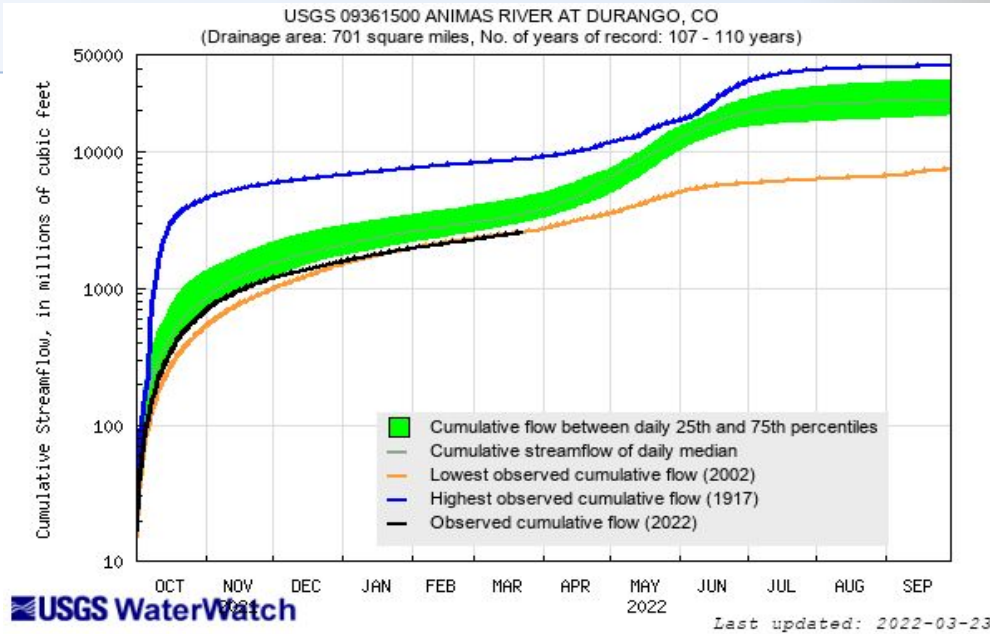
Streamflow Conditions

Map of 7-day average streamflow compared to historical streamflow for the day of the year

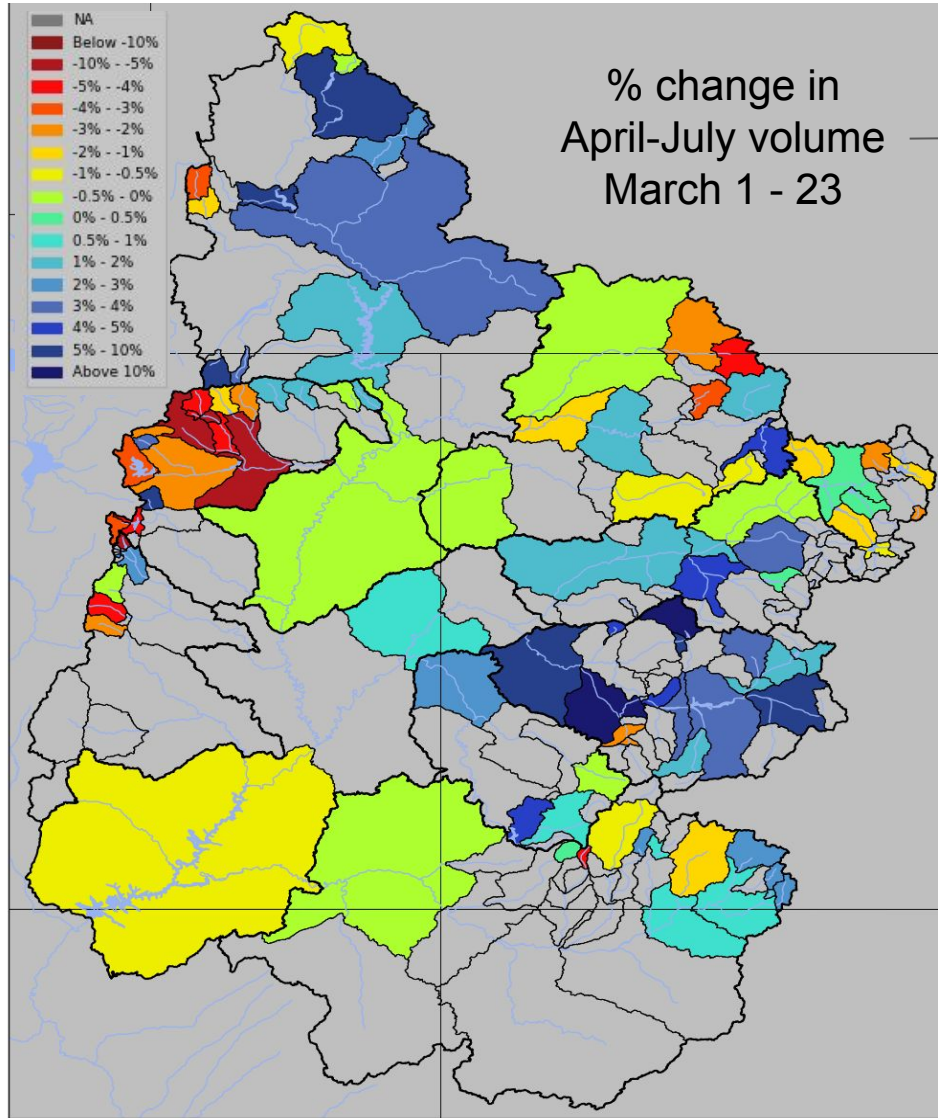


Explanation - Percentile classes

●	●	●	●	●	●	
Low	<10 Much below normal	10-24 Below normal	25-75 Normal	76-90 Above normal	>90 Much above normal	High
						Not-ranked



Trend in Raw Model Guidance: March 1-23



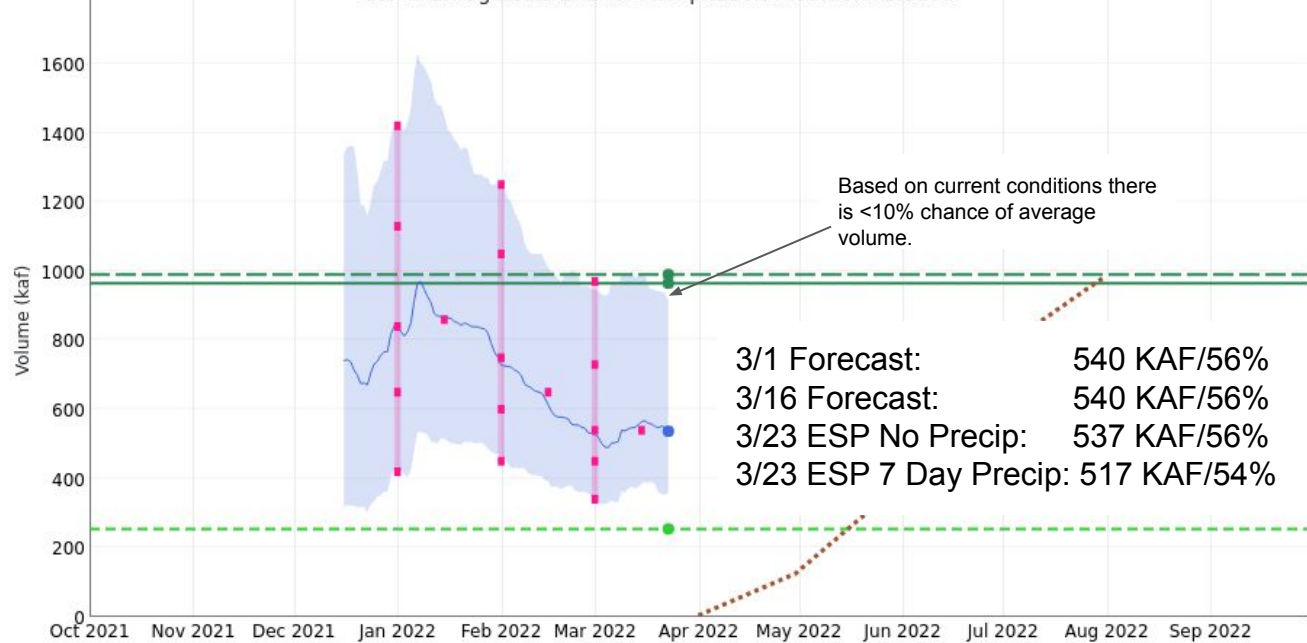
Does not mean official forecasts will increase/decrease this much. Official forecasts include basin forecaster discretion/knowledge.

Forecast Evolution Plot – Flaming Gorge Inflow

Green - Flaming Gorge Reservoir (GRNU1)

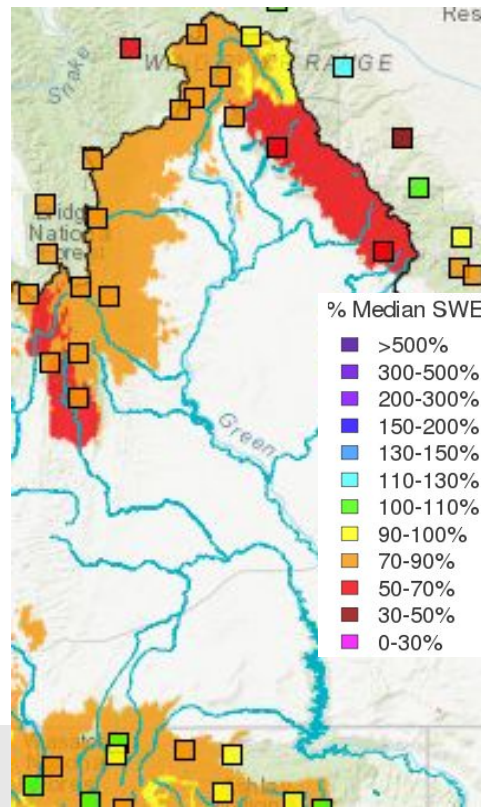
Period: Apr-Jul, Official 50% Forecast (2022-03-15): 540 kaf (56% Average, 55% Median)

ESP is Unregulated and No Precipitation Forecast Included

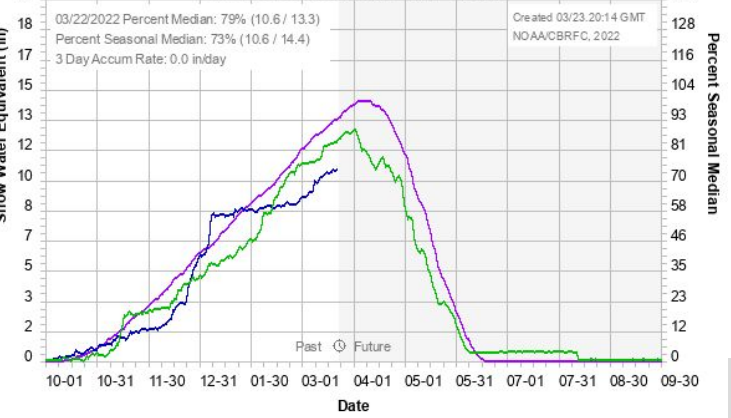


2022/03/23:
Min 1977: 254.3
Average: 965
Median: 990
ESP: 537

Model Snow with SNOTEL March 23, 2022



Colorado Basin River Forecast Center Green abv FlamingGorge Group



Current model guidance is near the March 1 forecast volume, but additional precipitation is needed during the last week of the month to maintain that level.

Forecast Evolution Plot – Blue Mesa Inflow

Gunnison - Blue Mesa Reservoir (BMDC2)

Period: Apr-Jul, Official 50% Forecast (2022-03-15): 585 kaf (92% Average, 102% Median)

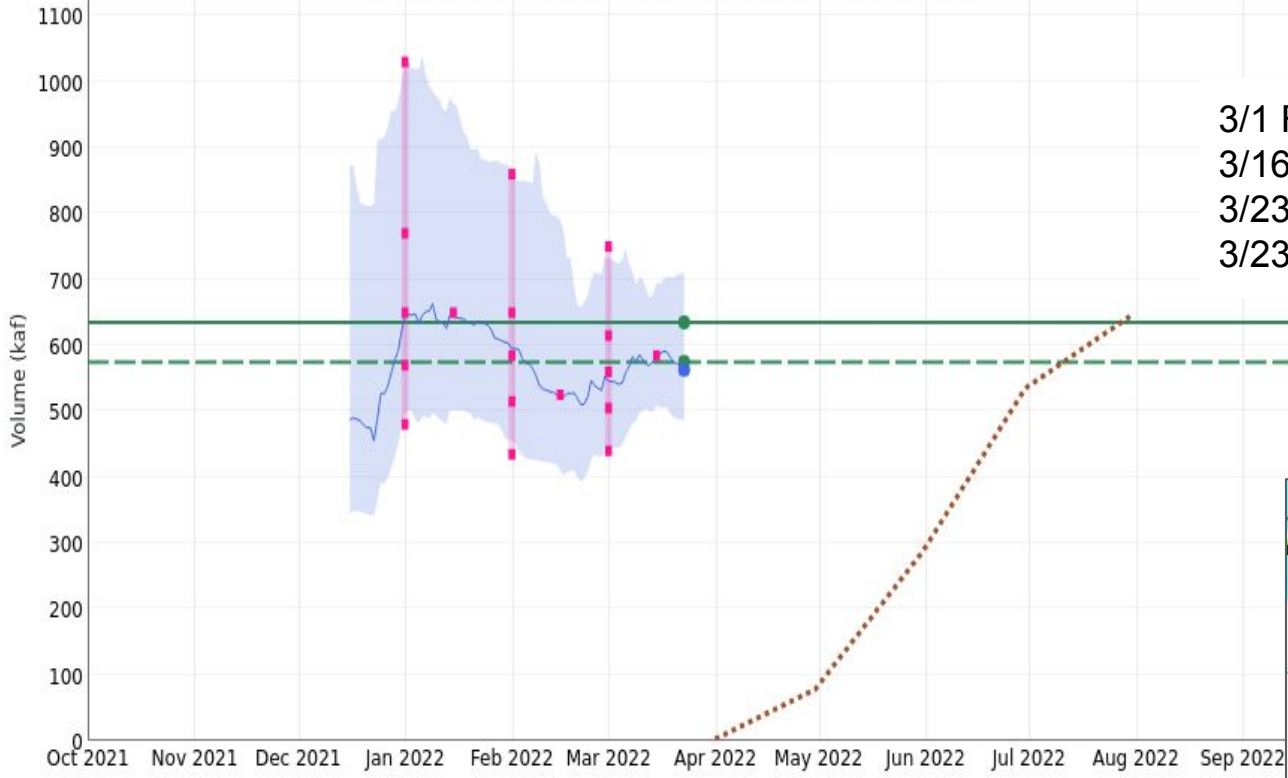
ESP is Unregulated and No Precipitation Forecast Included

2022/03/23:

Average: 635

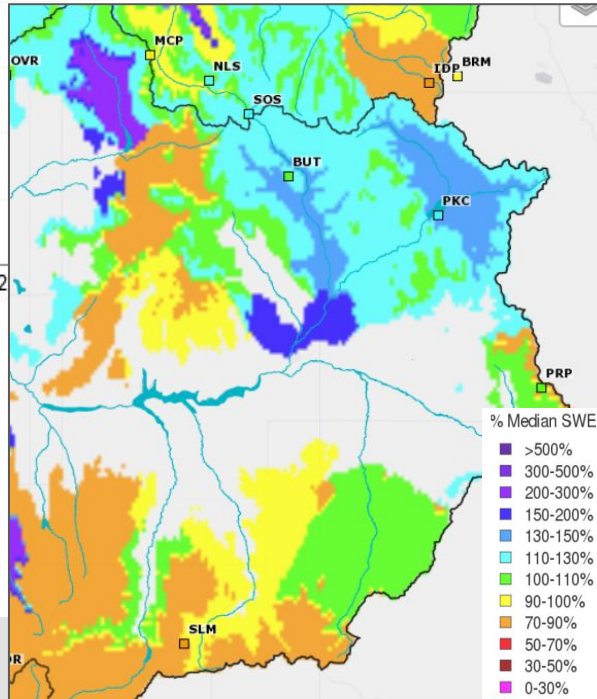
Median: 575

ESP: 563



3/1 Forecast:	560 KAF/88%
3/16 Forecast:	585 KAF/92%
3/23 ESP No Precip:	563 KAF/89%
3/23 ESP 7 Day Precip:	542 KAF/85%

Model Snow with SNOTEL March 23, 2022

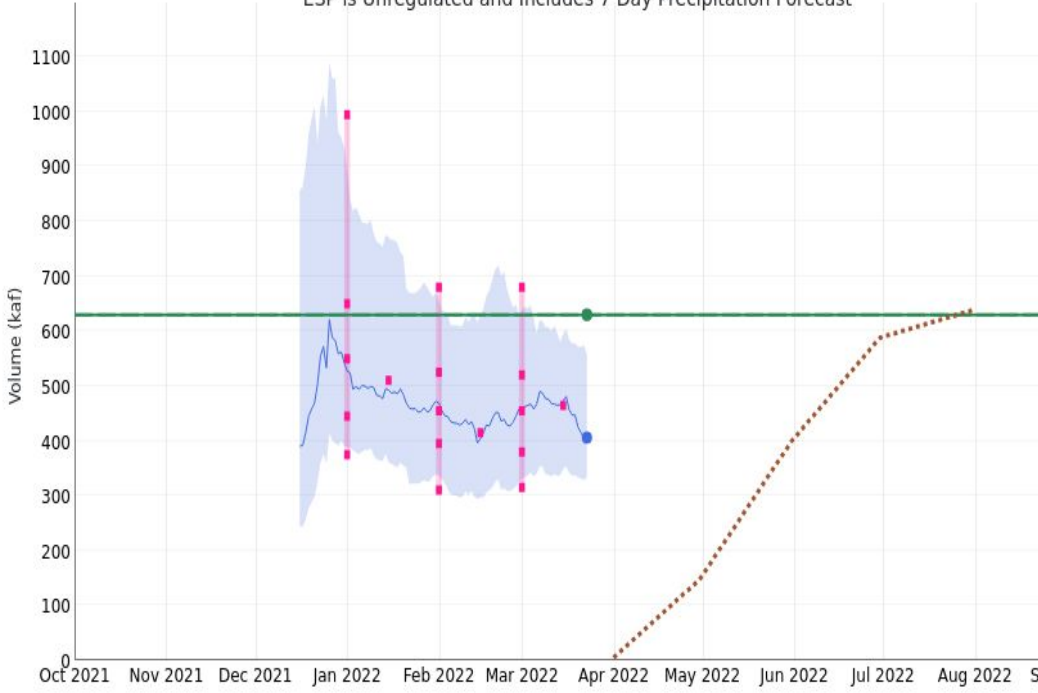


Forecast Evolution Plot – Navajo Inflow

San Juan - Navajo Reservoir, Archuleta, Nr (NVRN5)

Period: Apr-Jul, Official 50% Forecast (2022-03-15): 465 kaf (74% Average, 74% Median)

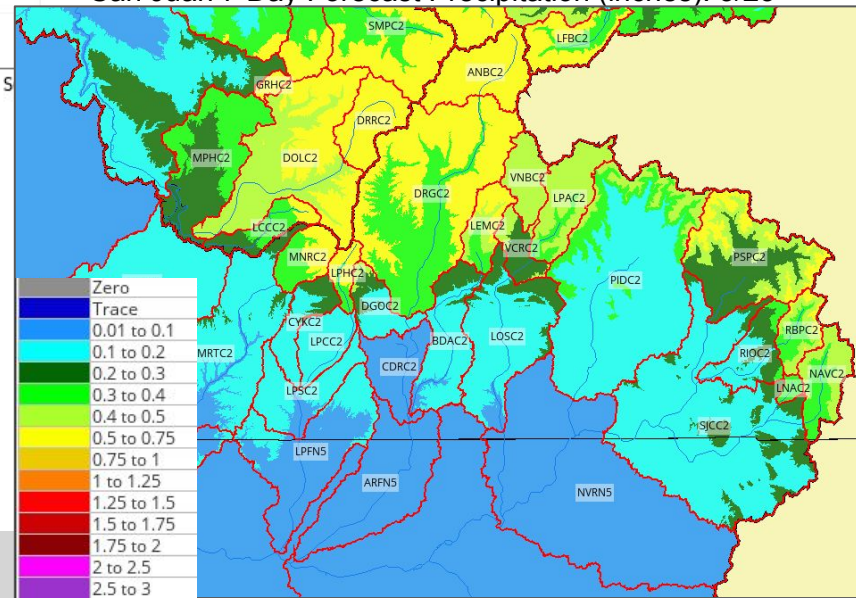
ESP is Unregulated and Includes 7 Day Precipitation Forecast



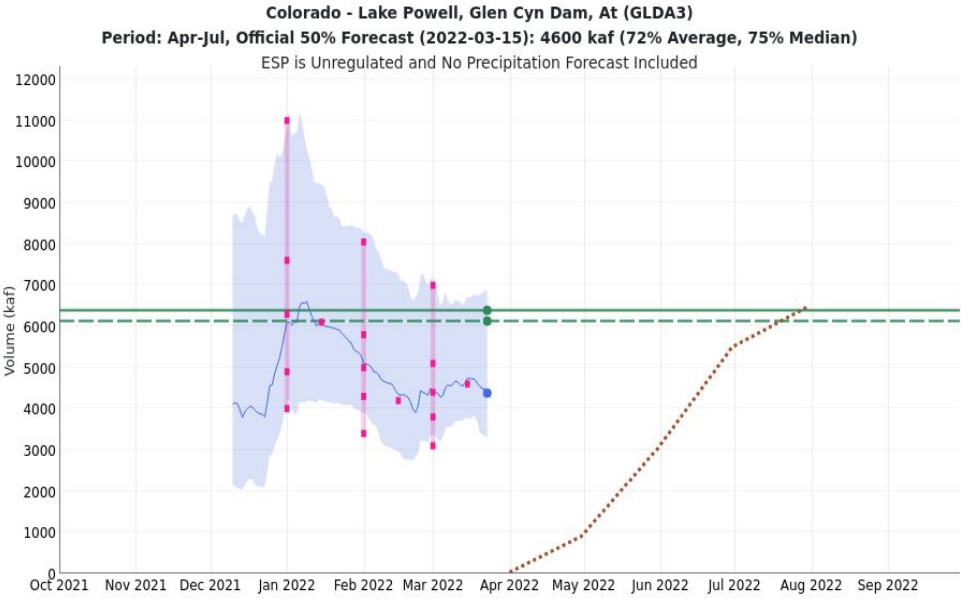
2022/03/23:
Average: 630
Median: 630
ESP: 406

3/1 Forecast: 455 KAF/72%
 3/15 Forecast: 465 KAF/74%
 3/23 ESP No Precip: 450 KAF/71%
 3/23 ESP 7 Day Precip: 406 KAF/64%

San Juan 7 Day Forecast Precipitation (inches): 3/23



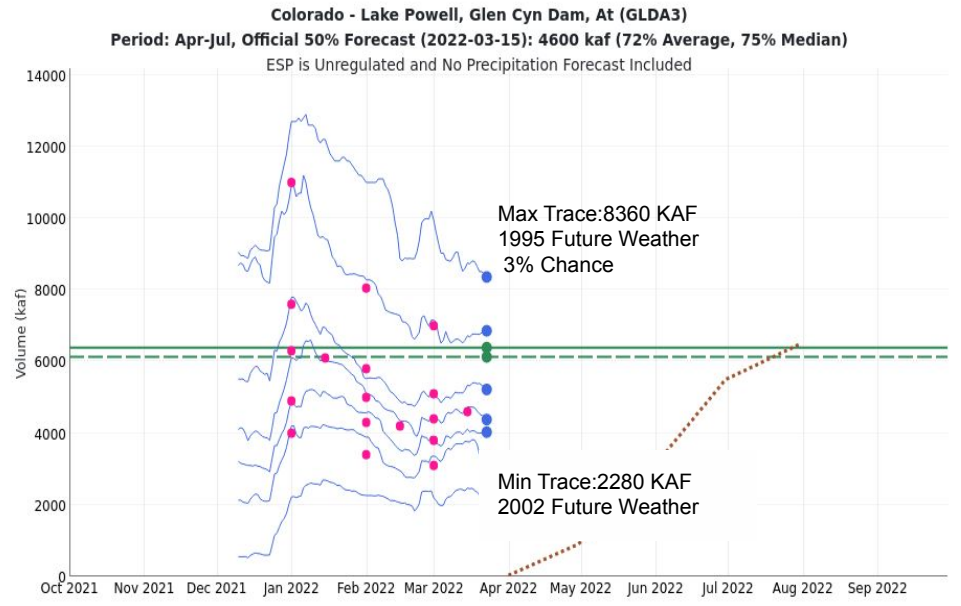
Forecast Evolution Plot – Lake Powell



2022/03/23:
Average: 6390
Median: 6130
ESP: 4380

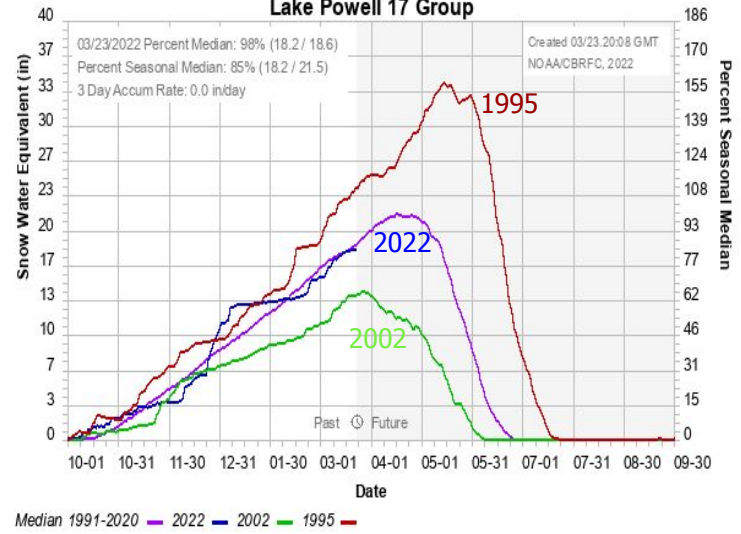
3/1 Forecast: 4400 KAF/69%
 3/16 Forecast: 4600 KAF/72%
 3/23 ESP No Precip: 4380 KAF/69%
 3/23 ESP 7 Day Precip: 4170 KAF/65%

Probability Traces



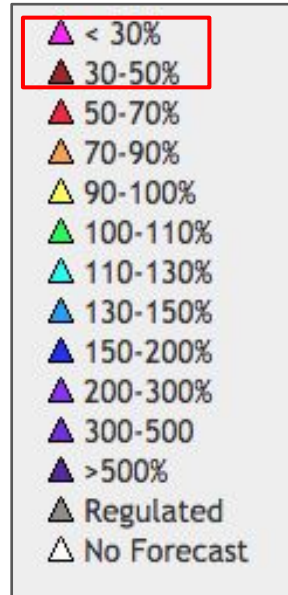
2022/03/23:
Average: 6390
Median: 6130
ESP max: 8360
ESP 10: 6860
ESP 30: 5220
ESP 50: 4380
ESP 70: 4030
ESP 90: 3290
ESP min: 2280

Colorado Basin River Forecast Center Lake Powell 17 Group



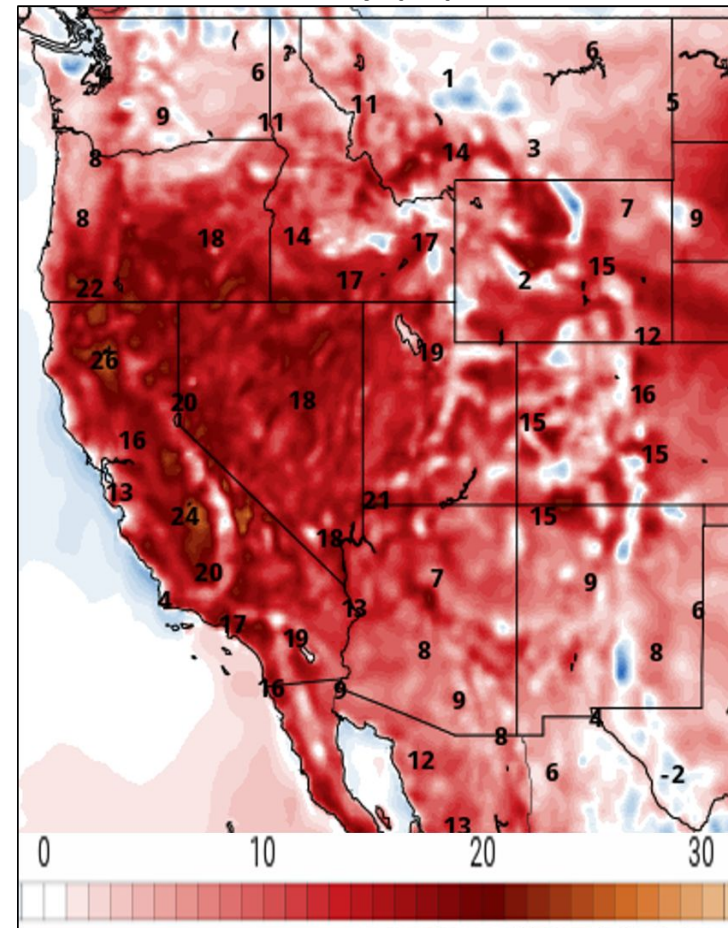
Lower Colorado River Water Supply

Gila/Salt/Verde/Little Colorado River Basins January – May Forecast Volume (Latest ESP % Median)

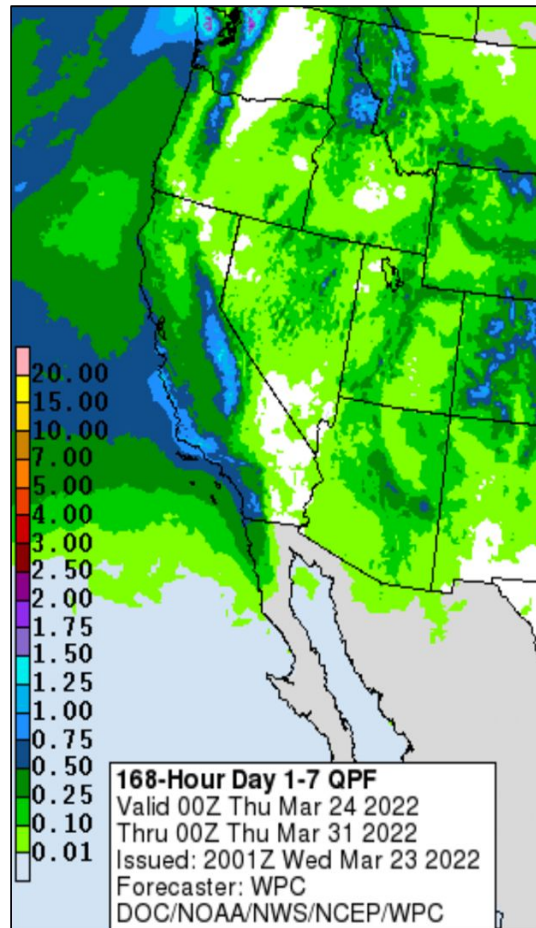


Upcoming Weather

Max Temperature Departure From Normal for Saturday 3/26/22



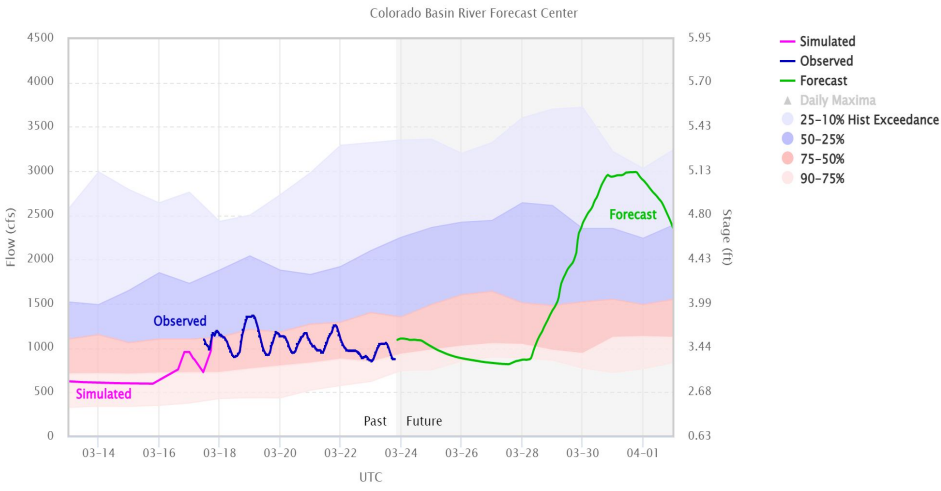
WPC 7-Day Precipitation Forecast



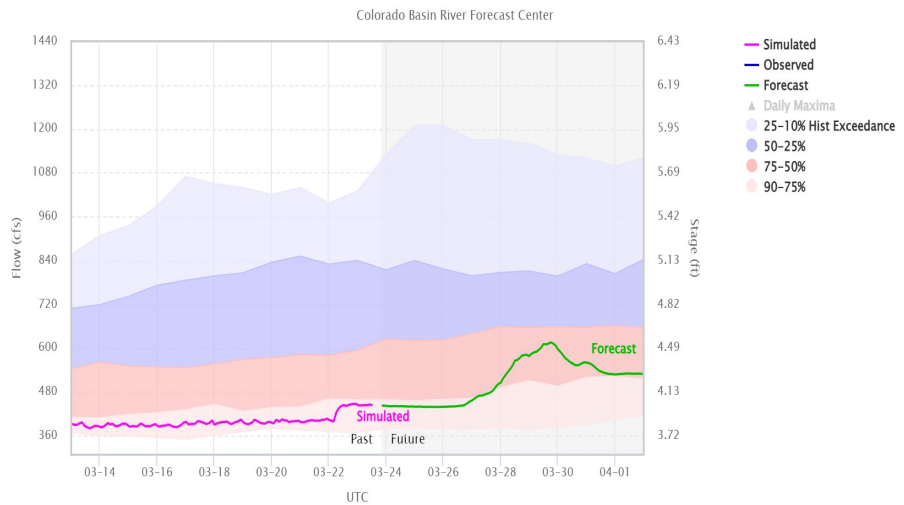
- High pressure will build over the region into this weekend initiating a warming trend that will bring record to near-record temperatures to much of the area.
- An upper low will move into the western US early next week. Widespread precipitation is expected through midweek next week. Precipitation totals are expected to be generally below $\frac{1}{2}$ of an inch, with the exception of the higher terrain of Colorado which could see up to an inch of precipitation in the 7 day period. There is quite a bit of uncertainty in terms of precipitation amounts. However, in most scenarios, the higher terrain of Colorado will see the highest precipitation totals.

10-Day Streamflow Forecasts

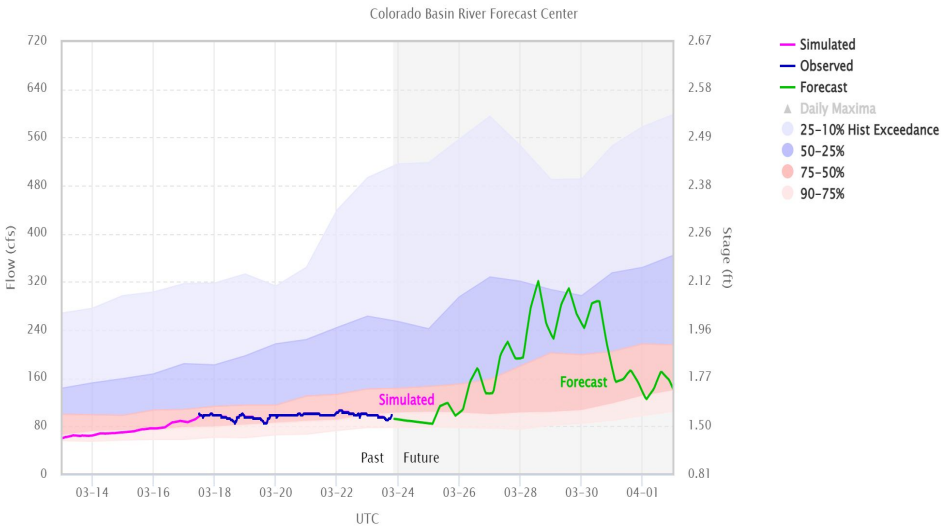
Forecast Hydrograph – Yampa – Deerlodge Park (YDLC2)



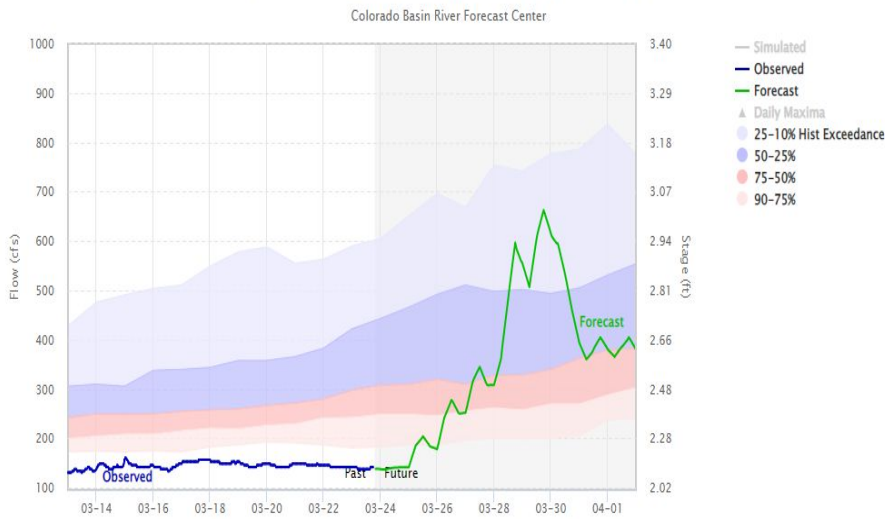
Forecast Hydrograph – Colorado – Kremmling, Nr (KRM2)



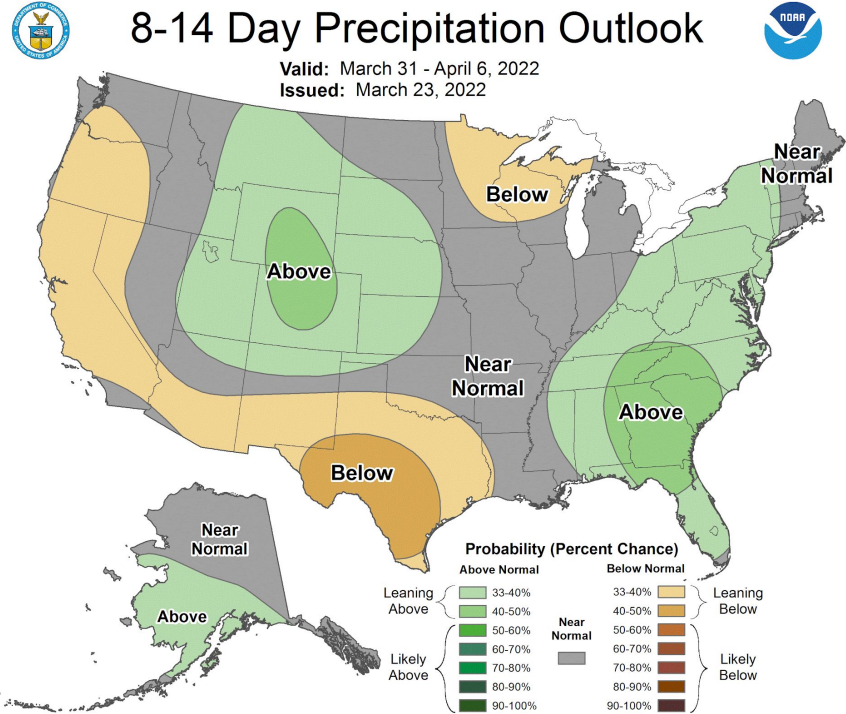
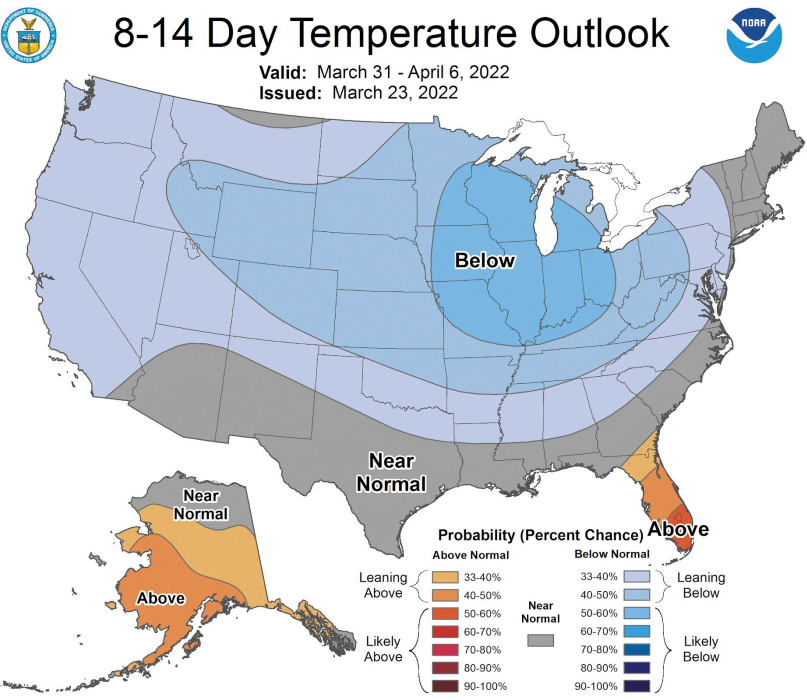
Forecast Hydrograph – Nf Gunnison – Somerset, Nr (SOM2)



Forecast Hydrograph – Animas – Durango (DRGC2)

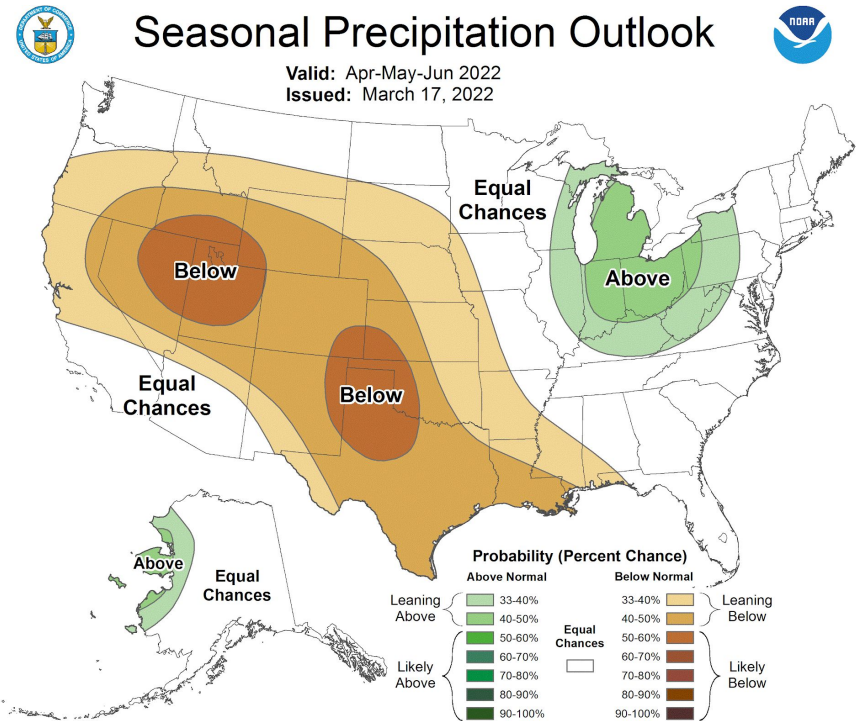
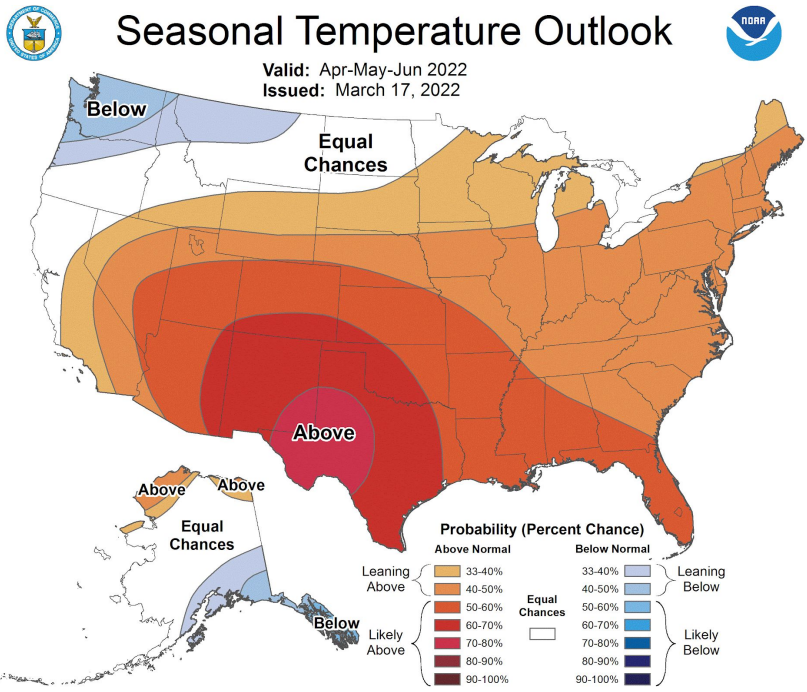


Upcoming Weather: 8-14 day outlook (March 31- April 6)



An active weather pattern is expected through the beginning of April. This will result in generally wetter and cooler weather than normal.

CPC Seasonal Outlook for April-June



CPC seasonal outlook for the rest of spring (April-June) shows above normal temperatures for the entire area with below normal precipitation for the northern two-thirds of the area.

Summary

- April 1 forecasts will likely be similar to the March 1 forecasts or decrease depending on how next week's weather materializes.
- Soil moisture deficits do exist. Forecasts are accounting for this deficit.
 - Deficits must be fulfilled before runoff can occur.
- Next two months weather are critical to water supply and runoff outcomes.
- Much above average temperature expected through early next week
 - Expecting rises in streamflow from melt and rain
- Active weather is expected starting early next week into the first week of April
 - Uncertainty is high in precipitation amounts