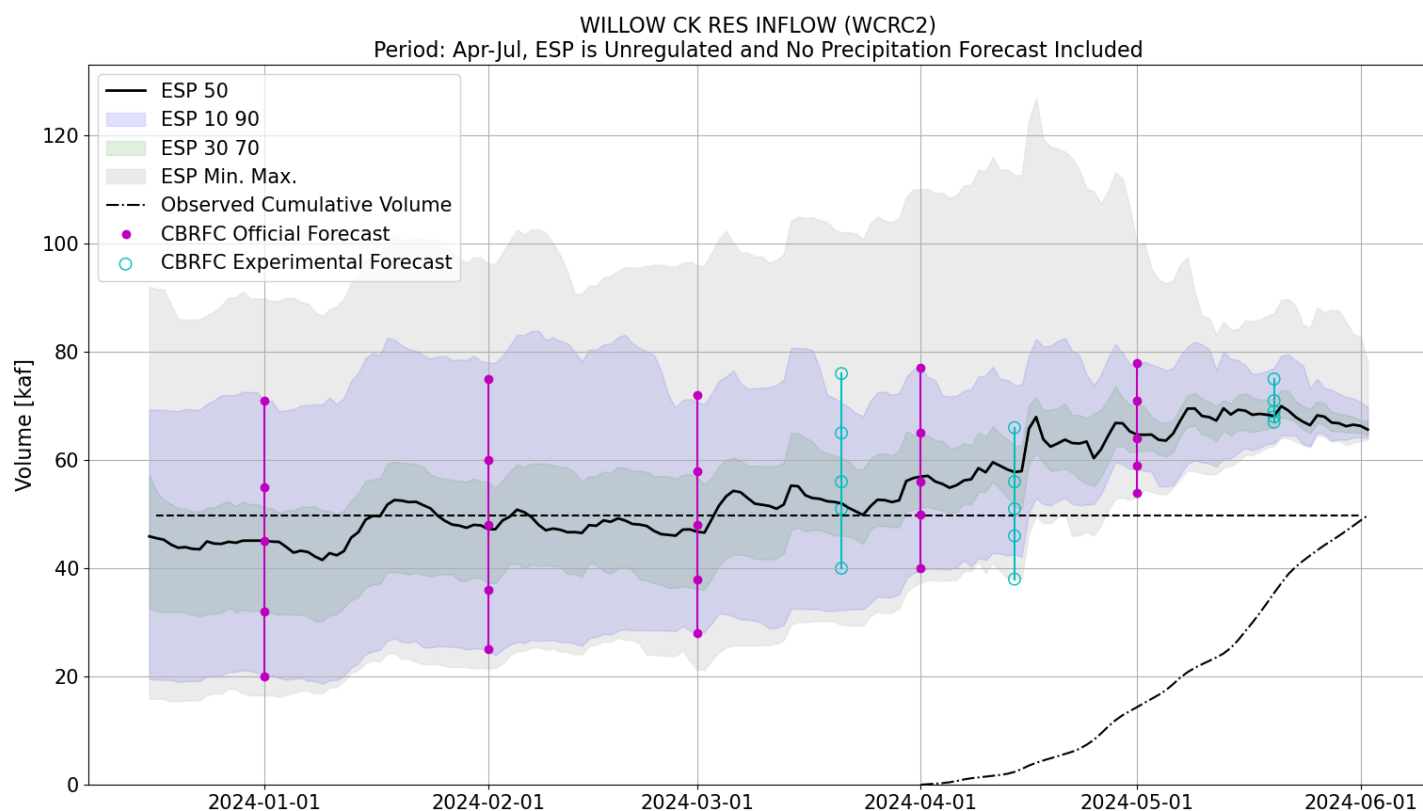


Experimental Seasonal (Apr - Jul) CBRFC Forecast with direct insertion of estimated SWE from airborne lidar survey

Location: Willow Ck - Willow Ck Reservoir, Granby, Nr (WCRC2)

Date of Flight: May 30, 2024

This experimental forecast product is provided for information purposes only and is not intended as an official forecast product of the Colorado Basin River Forecast Center (CBRFC). The experimental forecast shown in blue on the figure and provided in the table is created by running the Ensemble Streamflow Prediction (ESP) model after direct insertion of basin average snow water equivalent (SWE) from Airborne Snow Observatory Inc. (ASO) into the CBRFC's operational, calibrated, and lumped parameter snow model (SNOW-17).



Forecast / Exceedance Value	ESP90	ESP70	ESP50	ESP30	ESP10
CBRFC Experimental Forecast 5/30/2024	67	68	69	71	75
CBRFC ESP Model Guidance 5/30/2024	64	65	66	68	72

Probabilistic forecast volumes in thousands of acre-feet (kaf). Columns indicate exceedance values.

Please contact the CBRFC with any questions regarding this product - cbrfc.operations@noaa.gov